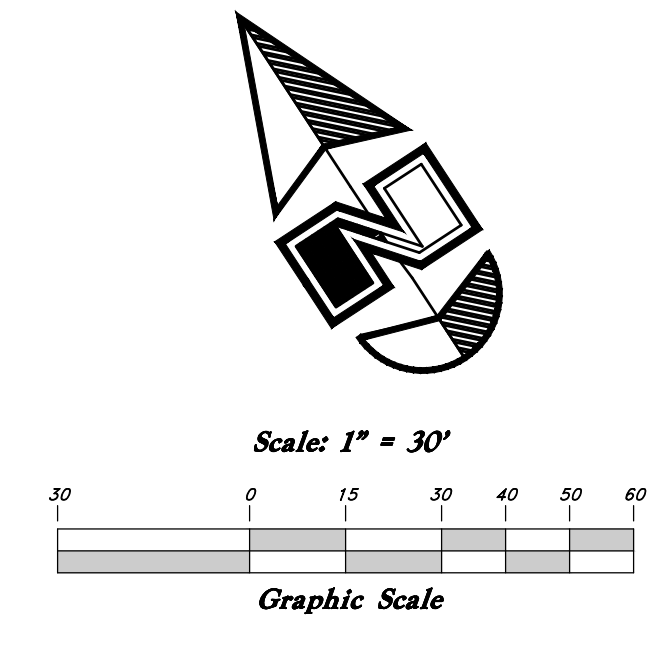


NOTES:
1. Unit Count: 62



GREAT BASIN ENGINEERING

5746 SOUTH 1475 EAST OGDEN, UTAH 84403
 MAIN (801) 399-4451 S.L.L.C (801) 521-0222 FAX (801) 392-7544
 WWW.GREATBASINENGINEERING.COM

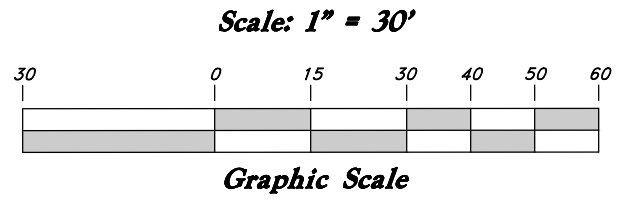
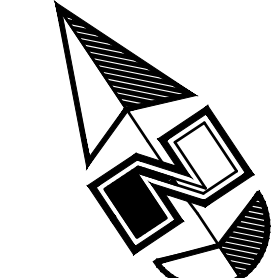
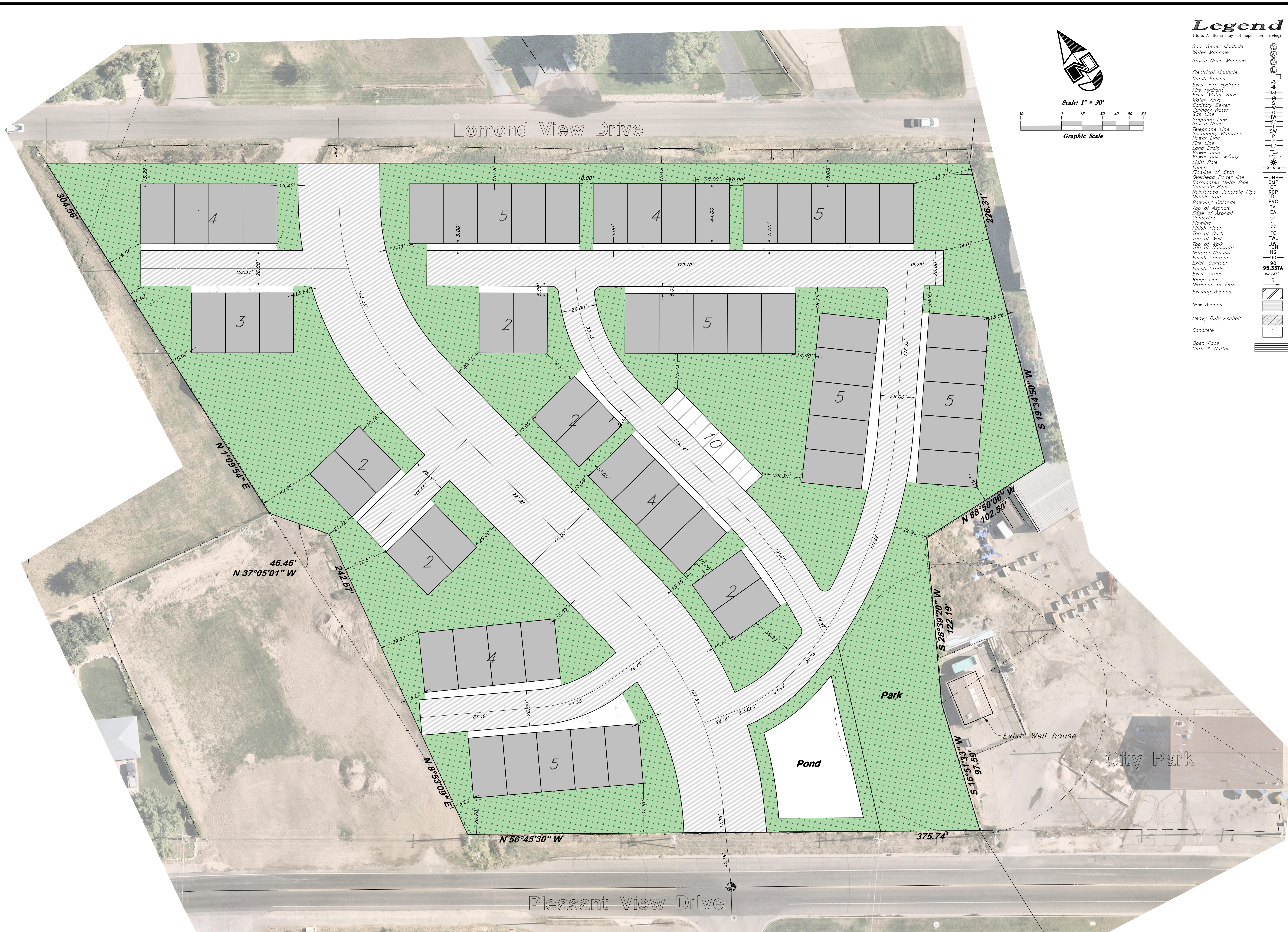
Concept 14
Charles A. Shaw Century Farm Subdivision
 Approx. 300 E. Pleasant View Dr.
 North Ogden City, Utah
 A part of Section 29, 17N, 10W, S1B&M, U.S. Survey

March 2024

SHEET NO.
C.1

18N726

1-800-662-4111



Legend

(Note: All items may not appear on drawing)

- San. Sewer Manhole
- Water Manhole
- Storm Drain Manhole
- Electrical Manhole
- Catch Basins
- Exist. Fire Hydrant
- Fire Hydrant
- Exist. Water Valve
- Water Valve
- Sanitary Sewer
- Culinary Water
- Gas Line
- Irrigation Line
- Storm Drain
- Telephone Line
- Secondary Waterline
- Power Line
- Fire Line
- Land Drain
- Power Pole
- Power Pole w/guy
- Light Pole
- Fence
- Flowline of ditch
- Overhead Power line
- Corrugated Metal Pipe
- Concrete Pipe
- Reinforced Concrete Pipe
- Ductile Iron
- Polyvinyl Chloride
- Top of Asphalt
- Edge of Asphalt
- Centerline
- Flowline
- Finish Floor
- Top of Curb
- Top of Wall
- Top of Walk
- Top of Concrete
- Natural Ground
- Finish Contour
- Exist. Contour
- Finish Grade
- Exist. Grade
- R
- Direction of Flow
- Existing Asphalt
- New Asphalt
- Heavy Duty Asphalt
- Concrete
- Open Face
- Curb & Gutter

GREAT BASIN ENGINEERING

5746 SOUTH 1475 EAST OGDEN, UTAH 84403
 MAIN (801)594-4515 S.I.C (801)521-0222 FAX (801)392-7544
 WWW.GREATBASINENGINEERING.COM

Concept 12

Hansen

Approx. 300 E Pleasant View Dr.
 North Ogden City, Weber County, Utah
 A part of Section 29, T7N, R1W, SLB&M, U.S. Survey