

- LEGEND**
- ⊙ 1500D 3/8" NON PIN
  - ⊙ FOUND 1/2" NON PIN
  - ⊙ SET 5/8" X 30" REBAR MKD LS 8517
  - ⊙ SET 1 1/2" X 24" REBAR MKD LS 8517
  - ⊙ SANITARY SEWER MANHOLE
  - ⊙ STORM DRAIN
  - ⊙ SPOT ELEVATION
  - ⊙ WATER METER
  - ⊙ UTILITY POLE

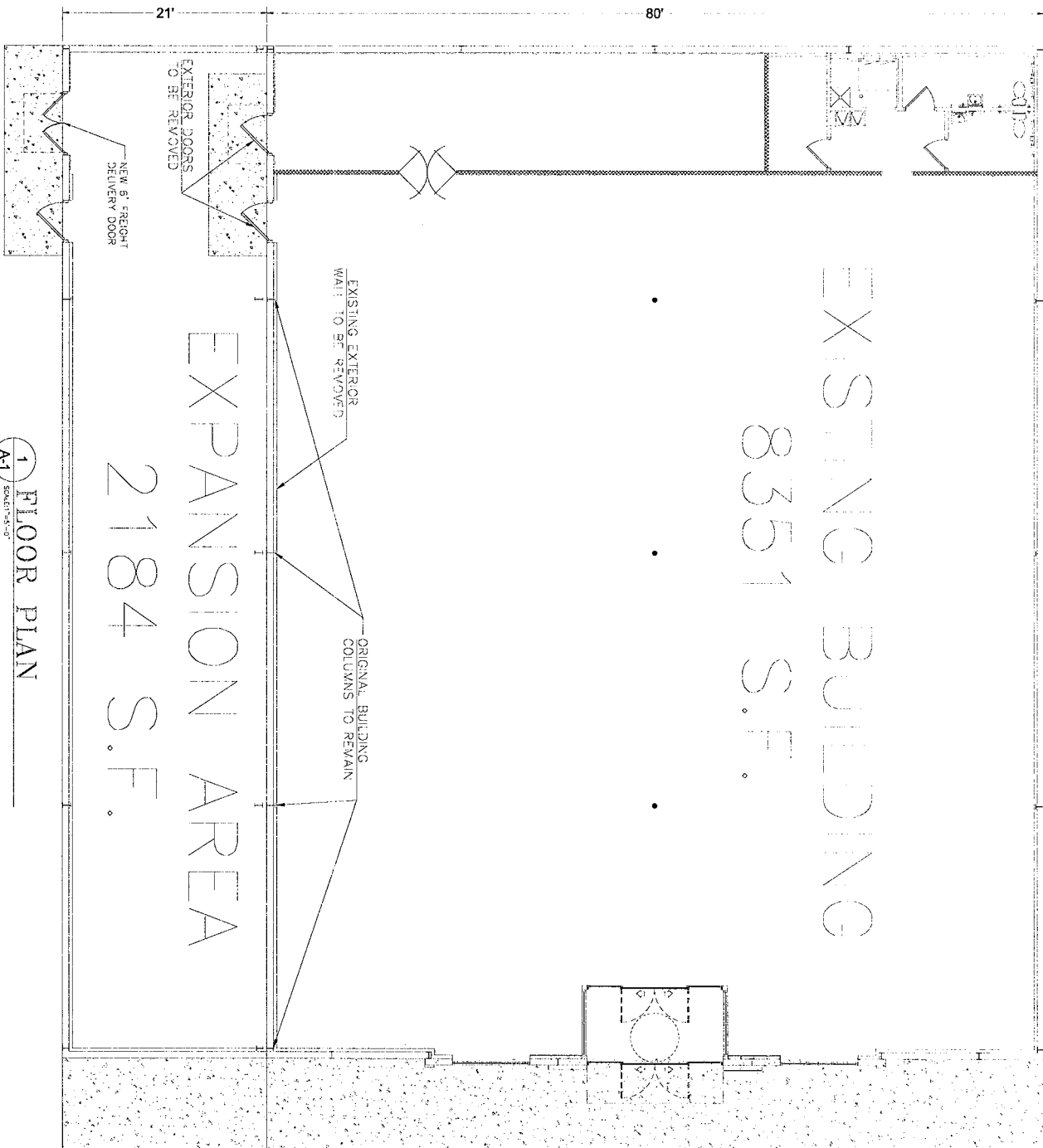


DATE:	6/8/2022
DRAWN BY:	DSG
DESIGNED BY:	DRW
REVIEWED BY:	CHK

**NEW MEADOWS IDAHO**  
**FAMILY DOLLAR ADDITION**  
 301 VIRGINIA ST, NEW MEADOWS, ID 83654

**ENGINEERING SPECIALTIES**  
 Civil Structural Geotech  
 1576 SOUTH 3200 WEST  
 LOGAN, UT 84321

**C-1**



1 FLOOR PLAN  
A-1

**NOTICE OF OCCUPANCY**

ALL RESPONSIBILITY FOR THE CARE AND MAINTENANCE OF THE BUILDING SHALL BE THE RESPONSIBILITY OF THE OCCUPANT. THE OCCUPANT SHALL BE RESPONSIBLE FOR THE MAINTENANCE OF THE BUILDING AND SHALL BE RESPONSIBLE FOR THE SAFETY OF THE BUILDING. THE OCCUPANT SHALL BE RESPONSIBLE FOR THE SAFETY OF THE BUILDING AND SHALL BE RESPONSIBLE FOR THE SAFETY OF THE BUILDING.

NOTE: REMOVE SOUNDED AT EVERY ENTRY POINT TO THE BUILDING STAIRS TO BE A SMOKE FREE STORE ROOMS IS REQUIRED INSIDE THE STORE AND ON STORE PROPERLY EXCEPT AT THE DESIGNATED EXTERIOR STAIRS AREA.

NOTE: THE GENERAL CONTRACTOR SHALL BE RESPONSIBLE FOR THE PROTECTION OF ALL UTILITIES AND STRUCTURES EXISTING ON THE SITE. THE GENERAL CONTRACTOR SHALL BE RESPONSIBLE FOR THE PROTECTION OF ALL UTILITIES AND STRUCTURES EXISTING ON THE SITE. THE GENERAL CONTRACTOR SHALL BE RESPONSIBLE FOR THE PROTECTION OF ALL UTILITIES AND STRUCTURES EXISTING ON THE SITE.

**WALL TYPE LEGEND:**  
 INTERIOR WALLS TO BE 3" VTL STUDS @ 16" O.C. (EXCEPTION AT WET WALL BETWEEN TOILET ROOMS IS TO BE 6" VTL STUDS) - COVER W/ 1/2" GYPSUM BOARD. SCHEDULE FOR OVER SIDE OF STUDS TO BE APPLIED FULL HEIGHT ON EACH SIDE AS NOTED BELOW - PAINT PER INTERIOR FINISH SCHEDULE.  
 PERIMETER REPRESENTS ALL INTERIOR NON-PERIMETER WALLS. SEE FLOOR PLAN FOR ADDITIONAL NOTES.  
 PERIMETER WALL TO UNDERSIDE OF STRUTTING.  
 PERIMETER WALL TO UNDERSIDE OF STRUTTING.  
 PERIMETER WALL TO UNDERSIDE OF STRUTTING.  
 PERIMETER WALL TO UNDERSIDE OF STRUTTING.

**TYPICAL WALL ATTACHMENT NOTE:**  
 ALL INTERIOR STUD WALLS INCLUDING BUT NOT LIMITED TO PERIMETER WALLS AND SALES SUPPORT AREA SEPARATION WALLS SHALL BE ATTACHED TO SLAB WITH 145" DIA DRIVERS @ 24" O.C.  
 ALL STUD WALLS ADJACENT TO EXTERIOR VERTICAL FINISH SHALL BE SECURED TO EACH OTHER WITH #10 SCREWS.

DEVELOPER/LANDLORD MUST USE THIS GROUND FLOOR PLAN SHEET FOR THE PURPOSES OF DIMENSIONAL AS-BUILT SUBMITTAL TO FAMILY DOLLAR.



**ENGINEERING SPECIALTIES**  
 1576 SOUTH 3200 WEST  
 LOGAN, UT 84321

NEW MEADOWS IDAHO  
 FAMILY DOLLAR ADDITION  
 301 VIRGINIA ST, NEW MEADOWS, ID 83654

DATE:	6/8/2022
DRAWN BY:	DSG
DESIGNED BY:	DRW
REVIEWED BY:	CHK

A-1

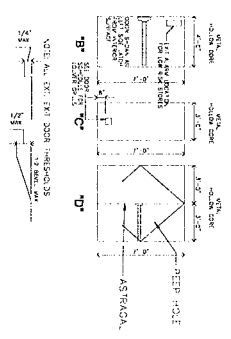
**GENERAL CONTRACTOR SHALL BE RESPONSIBLE FOR OBTAINING PERMITS FOR EXISTING AND PROPOSED CONSTRUCTION. THE GENERAL CONTRACTOR SHALL BE RESPONSIBLE FOR OBTAINING PERMITS FOR EXISTING AND PROPOSED CONSTRUCTION. THE GENERAL CONTRACTOR SHALL BE RESPONSIBLE FOR OBTAINING PERMITS FOR EXISTING AND PROPOSED CONSTRUCTION.**

**NOTES:**  
 1. GENERAL CONTRACTOR SHALL BE RESPONSIBLE FOR OBTAINING PERMITS FOR EXISTING AND PROPOSED CONSTRUCTION. THE GENERAL CONTRACTOR SHALL BE RESPONSIBLE FOR OBTAINING PERMITS FOR EXISTING AND PROPOSED CONSTRUCTION.

**NOTES:**  
 1. GENERAL CONTRACTOR SHALL BE RESPONSIBLE FOR OBTAINING PERMITS FOR EXISTING AND PROPOSED CONSTRUCTION. THE GENERAL CONTRACTOR SHALL BE RESPONSIBLE FOR OBTAINING PERMITS FOR EXISTING AND PROPOSED CONSTRUCTION.

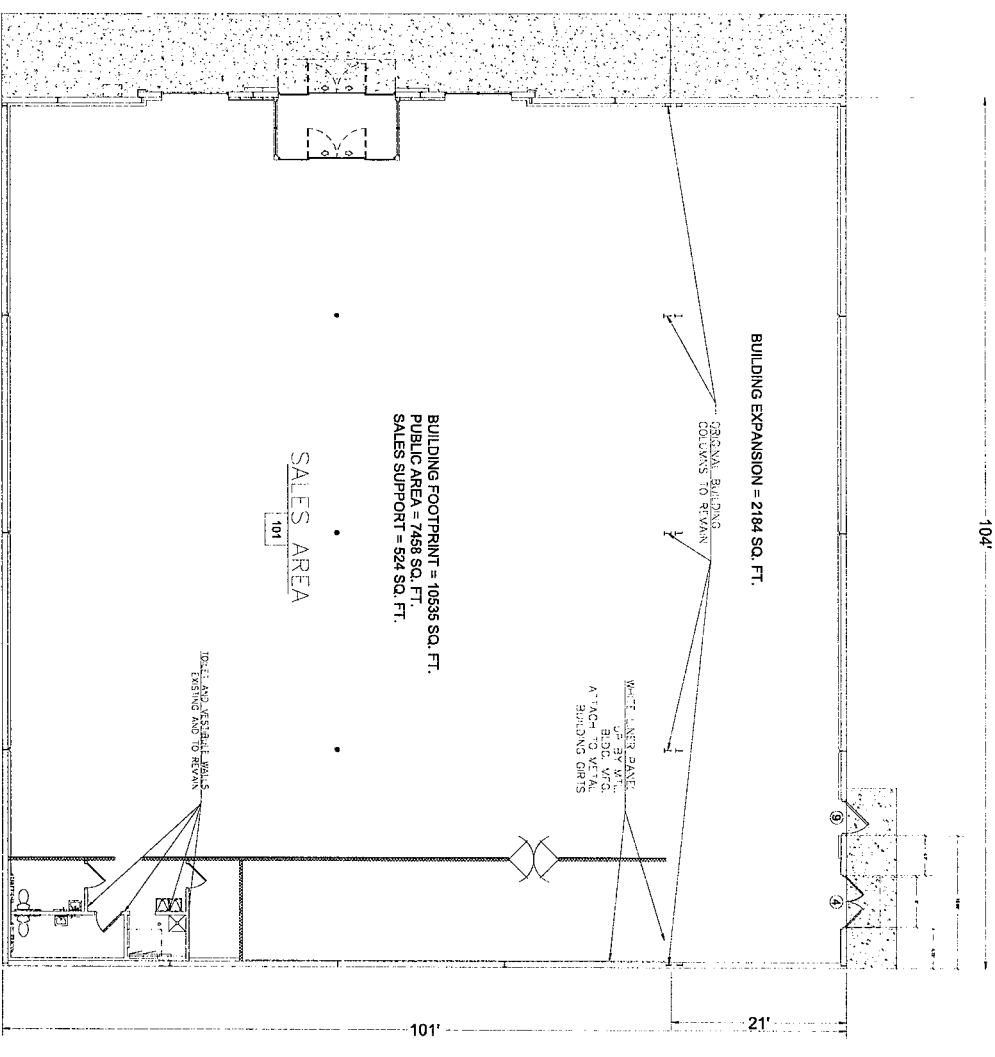
**NOTES:**  
 1. GENERAL CONTRACTOR SHALL BE RESPONSIBLE FOR OBTAINING PERMITS FOR EXISTING AND PROPOSED CONSTRUCTION. THE GENERAL CONTRACTOR SHALL BE RESPONSIBLE FOR OBTAINING PERMITS FOR EXISTING AND PROPOSED CONSTRUCTION.

**NOTE:**  
 1. GENERAL CONTRACTOR SHALL BE RESPONSIBLE FOR OBTAINING PERMITS FOR EXISTING AND PROPOSED CONSTRUCTION. THE GENERAL CONTRACTOR SHALL BE RESPONSIBLE FOR OBTAINING PERMITS FOR EXISTING AND PROPOSED CONSTRUCTION.



**DOOR SCHEDULE**

NO.	LOCATION	WIND	HT	THICK	TYPE	INTERNAL	UNITS	DOOR	GLASS	HEAD	JAMB	SILL	REMARKS
2.1	REAR	1	6'-0"	1 1/2"	1	1	1	1	1	1	1	1	1
2.2	REAR	2	6'-0"	1 1/2"	1	1	1	1	1	1	1	1	1
2.3	REAR	3	6'-0"	1 1/2"	1	1	1	1	1	1	1	1	1
2.4	REAR	4	6'-0"	1 1/2"	1	1	1	1	1	1	1	1	1
2.5	REAR	5	6'-0"	1 1/2"	1	1	1	1	1	1	1	1	1
2.6	REAR	6	6'-0"	1 1/2"	1	1	1	1	1	1	1	1	1
2.7	REAR	7	6'-0"	1 1/2"	1	1	1	1	1	1	1	1	1
2.8	REAR	8	6'-0"	1 1/2"	1	1	1	1	1	1	1	1	1
2.9	REAR	9	6'-0"	1 1/2"	1	1	1	1	1	1	1	1	1
2.10	REAR	10	6'-0"	1 1/2"	1	1	1	1	1	1	1	1	1



**DOOR SCHEDULE**

DATE:	6/8/2022
DRAWN BY:	DSG
DESIGNED BY:	DRW
REVIEWED BY:	CHK

**NEW MEADOWS IDAHO FAMILY DOLLAR ADDITION**  
 301 VIRGINIA ST, NEW MEADOWS, ID 83654

**ENGINEERING SPECIALTIES**  
 CIVIL Structural Geotechnical  
 1576 SOUTH 3200 WEST  
 LOGAN, UT 84321

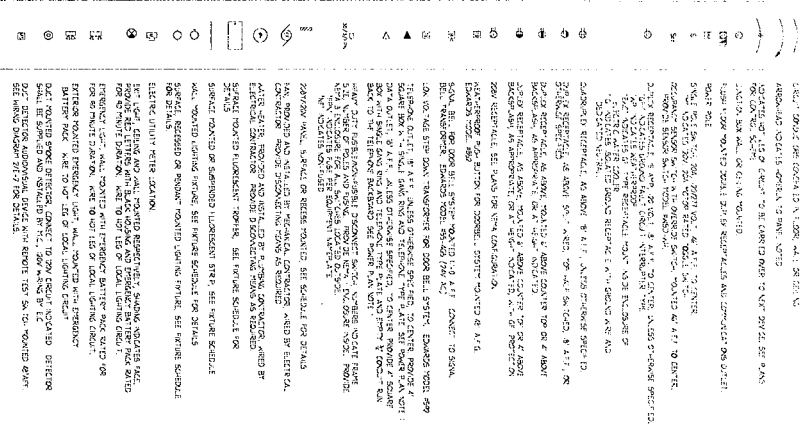
**A-2**



**GENERAL ELECTRICAL NOTES**

1. ALL ELECTRICAL WORK SHALL BE IN ACCORDANCE WITH THE NATIONAL ELECTRICAL CODE (NEC) AND THE NATIONAL ELECTRICAL SAFETY CODE (NESC).
2. ALL ELECTRICAL WORK SHALL BE DONE IN ACCORDANCE WITH THE NATIONAL ELECTRICAL CODE (NEC) AND THE NATIONAL ELECTRICAL SAFETY CODE (NESC).
3. ALL ELECTRICAL WORK SHALL BE DONE IN ACCORDANCE WITH THE NATIONAL ELECTRICAL CODE (NEC) AND THE NATIONAL ELECTRICAL SAFETY CODE (NESC).
4. ALL ELECTRICAL WORK SHALL BE DONE IN ACCORDANCE WITH THE NATIONAL ELECTRICAL CODE (NEC) AND THE NATIONAL ELECTRICAL SAFETY CODE (NESC).
5. ALL ELECTRICAL WORK SHALL BE DONE IN ACCORDANCE WITH THE NATIONAL ELECTRICAL CODE (NEC) AND THE NATIONAL ELECTRICAL SAFETY CODE (NESC).
6. ALL ELECTRICAL WORK SHALL BE DONE IN ACCORDANCE WITH THE NATIONAL ELECTRICAL CODE (NEC) AND THE NATIONAL ELECTRICAL SAFETY CODE (NESC).
7. ALL ELECTRICAL WORK SHALL BE DONE IN ACCORDANCE WITH THE NATIONAL ELECTRICAL CODE (NEC) AND THE NATIONAL ELECTRICAL SAFETY CODE (NESC).
8. ALL ELECTRICAL WORK SHALL BE DONE IN ACCORDANCE WITH THE NATIONAL ELECTRICAL CODE (NEC) AND THE NATIONAL ELECTRICAL SAFETY CODE (NESC).
9. ALL ELECTRICAL WORK SHALL BE DONE IN ACCORDANCE WITH THE NATIONAL ELECTRICAL CODE (NEC) AND THE NATIONAL ELECTRICAL SAFETY CODE (NESC).
10. ALL ELECTRICAL WORK SHALL BE DONE IN ACCORDANCE WITH THE NATIONAL ELECTRICAL CODE (NEC) AND THE NATIONAL ELECTRICAL SAFETY CODE (NESC).
11. ALL ELECTRICAL WORK SHALL BE DONE IN ACCORDANCE WITH THE NATIONAL ELECTRICAL CODE (NEC) AND THE NATIONAL ELECTRICAL SAFETY CODE (NESC).
12. ALL ELECTRICAL WORK SHALL BE DONE IN ACCORDANCE WITH THE NATIONAL ELECTRICAL CODE (NEC) AND THE NATIONAL ELECTRICAL SAFETY CODE (NESC).
13. ALL ELECTRICAL WORK SHALL BE DONE IN ACCORDANCE WITH THE NATIONAL ELECTRICAL CODE (NEC) AND THE NATIONAL ELECTRICAL SAFETY CODE (NESC).
14. ALL ELECTRICAL WORK SHALL BE DONE IN ACCORDANCE WITH THE NATIONAL ELECTRICAL CODE (NEC) AND THE NATIONAL ELECTRICAL SAFETY CODE (NESC).
15. ALL ELECTRICAL WORK SHALL BE DONE IN ACCORDANCE WITH THE NATIONAL ELECTRICAL CODE (NEC) AND THE NATIONAL ELECTRICAL SAFETY CODE (NESC).
16. ALL ELECTRICAL WORK SHALL BE DONE IN ACCORDANCE WITH THE NATIONAL ELECTRICAL CODE (NEC) AND THE NATIONAL ELECTRICAL SAFETY CODE (NESC).
17. ALL ELECTRICAL WORK SHALL BE DONE IN ACCORDANCE WITH THE NATIONAL ELECTRICAL CODE (NEC) AND THE NATIONAL ELECTRICAL SAFETY CODE (NESC).
18. ALL ELECTRICAL WORK SHALL BE DONE IN ACCORDANCE WITH THE NATIONAL ELECTRICAL CODE (NEC) AND THE NATIONAL ELECTRICAL SAFETY CODE (NESC).
19. ALL ELECTRICAL WORK SHALL BE DONE IN ACCORDANCE WITH THE NATIONAL ELECTRICAL CODE (NEC) AND THE NATIONAL ELECTRICAL SAFETY CODE (NESC).
20. ALL ELECTRICAL WORK SHALL BE DONE IN ACCORDANCE WITH THE NATIONAL ELECTRICAL CODE (NEC) AND THE NATIONAL ELECTRICAL SAFETY CODE (NESC).

**ELECTRICAL SYMBOL LEGEND**

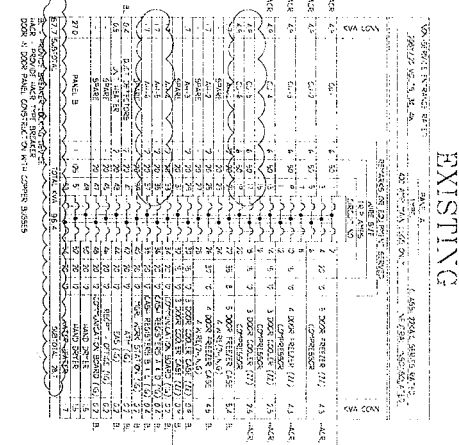


**NOTES**

1. ALL ELECTRICAL WORK SHALL BE DONE IN ACCORDANCE WITH THE NATIONAL ELECTRICAL CODE (NEC) AND THE NATIONAL ELECTRICAL SAFETY CODE (NESC).
2. ALL ELECTRICAL WORK SHALL BE DONE IN ACCORDANCE WITH THE NATIONAL ELECTRICAL CODE (NEC) AND THE NATIONAL ELECTRICAL SAFETY CODE (NESC).
3. ALL ELECTRICAL WORK SHALL BE DONE IN ACCORDANCE WITH THE NATIONAL ELECTRICAL CODE (NEC) AND THE NATIONAL ELECTRICAL SAFETY CODE (NESC).
4. ALL ELECTRICAL WORK SHALL BE DONE IN ACCORDANCE WITH THE NATIONAL ELECTRICAL CODE (NEC) AND THE NATIONAL ELECTRICAL SAFETY CODE (NESC).
5. ALL ELECTRICAL WORK SHALL BE DONE IN ACCORDANCE WITH THE NATIONAL ELECTRICAL CODE (NEC) AND THE NATIONAL ELECTRICAL SAFETY CODE (NESC).
6. ALL ELECTRICAL WORK SHALL BE DONE IN ACCORDANCE WITH THE NATIONAL ELECTRICAL CODE (NEC) AND THE NATIONAL ELECTRICAL SAFETY CODE (NESC).
7. ALL ELECTRICAL WORK SHALL BE DONE IN ACCORDANCE WITH THE NATIONAL ELECTRICAL CODE (NEC) AND THE NATIONAL ELECTRICAL SAFETY CODE (NESC).
8. ALL ELECTRICAL WORK SHALL BE DONE IN ACCORDANCE WITH THE NATIONAL ELECTRICAL CODE (NEC) AND THE NATIONAL ELECTRICAL SAFETY CODE (NESC).
9. ALL ELECTRICAL WORK SHALL BE DONE IN ACCORDANCE WITH THE NATIONAL ELECTRICAL CODE (NEC) AND THE NATIONAL ELECTRICAL SAFETY CODE (NESC).
10. ALL ELECTRICAL WORK SHALL BE DONE IN ACCORDANCE WITH THE NATIONAL ELECTRICAL CODE (NEC) AND THE NATIONAL ELECTRICAL SAFETY CODE (NESC).
11. ALL ELECTRICAL WORK SHALL BE DONE IN ACCORDANCE WITH THE NATIONAL ELECTRICAL CODE (NEC) AND THE NATIONAL ELECTRICAL SAFETY CODE (NESC).
12. ALL ELECTRICAL WORK SHALL BE DONE IN ACCORDANCE WITH THE NATIONAL ELECTRICAL CODE (NEC) AND THE NATIONAL ELECTRICAL SAFETY CODE (NESC).
13. ALL ELECTRICAL WORK SHALL BE DONE IN ACCORDANCE WITH THE NATIONAL ELECTRICAL CODE (NEC) AND THE NATIONAL ELECTRICAL SAFETY CODE (NESC).
14. ALL ELECTRICAL WORK SHALL BE DONE IN ACCORDANCE WITH THE NATIONAL ELECTRICAL CODE (NEC) AND THE NATIONAL ELECTRICAL SAFETY CODE (NESC).
15. ALL ELECTRICAL WORK SHALL BE DONE IN ACCORDANCE WITH THE NATIONAL ELECTRICAL CODE (NEC) AND THE NATIONAL ELECTRICAL SAFETY CODE (NESC).
16. ALL ELECTRICAL WORK SHALL BE DONE IN ACCORDANCE WITH THE NATIONAL ELECTRICAL CODE (NEC) AND THE NATIONAL ELECTRICAL SAFETY CODE (NESC).
17. ALL ELECTRICAL WORK SHALL BE DONE IN ACCORDANCE WITH THE NATIONAL ELECTRICAL CODE (NEC) AND THE NATIONAL ELECTRICAL SAFETY CODE (NESC).
18. ALL ELECTRICAL WORK SHALL BE DONE IN ACCORDANCE WITH THE NATIONAL ELECTRICAL CODE (NEC) AND THE NATIONAL ELECTRICAL SAFETY CODE (NESC).
19. ALL ELECTRICAL WORK SHALL BE DONE IN ACCORDANCE WITH THE NATIONAL ELECTRICAL CODE (NEC) AND THE NATIONAL ELECTRICAL SAFETY CODE (NESC).
20. ALL ELECTRICAL WORK SHALL BE DONE IN ACCORDANCE WITH THE NATIONAL ELECTRICAL CODE (NEC) AND THE NATIONAL ELECTRICAL SAFETY CODE (NESC).

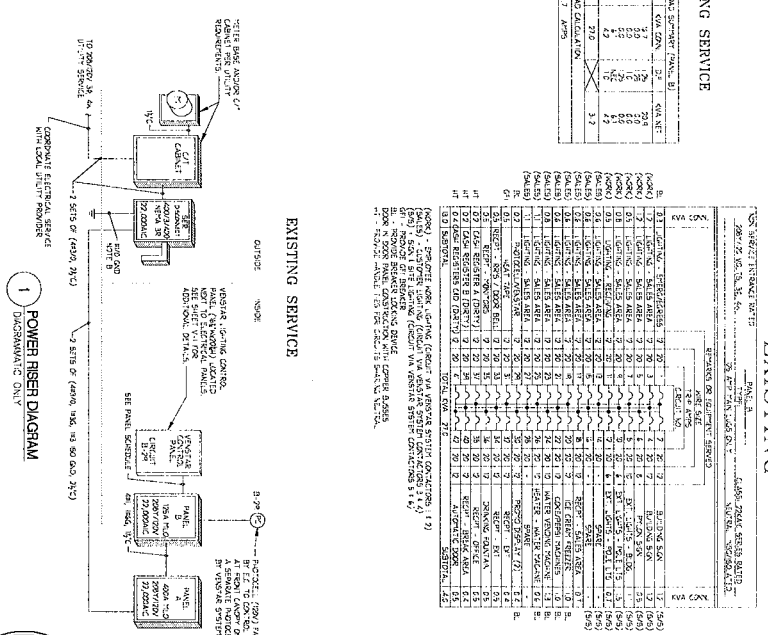
**EXISTING SERVICE**

NO.	DESCRIPTION	AMPS	VOLTS	PHASES	WIRE SIZE	TYPE	DEPTH	LOCATION
1	300A 480V 3PH 4W 0	300	480	3	3/0	THHN	18"	UNDER SLAB
2	100A 480V 3PH 4W 0	100	480	3	1/0	THHN	18"	UNDER SLAB
3	50A 480V 3PH 4W 0	50	480	3	2/0	THHN	18"	UNDER SLAB
4	25A 480V 3PH 4W 0	25	480	3	1/0	THHN	18"	UNDER SLAB
5	15A 480V 3PH 4W 0	15	480	3	2/0	THHN	18"	UNDER SLAB
6	10A 480V 3PH 4W 0	10	480	3	2/0	THHN	18"	UNDER SLAB
7	5A 480V 3PH 4W 0	5	480	3	2/0	THHN	18"	UNDER SLAB
8	3A 480V 3PH 4W 0	3	480	3	2/0	THHN	18"	UNDER SLAB
9	2A 480V 3PH 4W 0	2	480	3	2/0	THHN	18"	UNDER SLAB
10	1A 480V 3PH 4W 0	1	480	3	2/0	THHN	18"	UNDER SLAB



**EXISTING SERVICE**

NO.	DESCRIPTION	AMPS	VOLTS	PHASES	WIRE SIZE	TYPE	DEPTH	LOCATION
1	300A 480V 3PH 4W 0	300	480	3	3/0	THHN	18"	UNDER SLAB
2	100A 480V 3PH 4W 0	100	480	3	1/0	THHN	18"	UNDER SLAB
3	50A 480V 3PH 4W 0	50	480	3	2/0	THHN	18"	UNDER SLAB
4	25A 480V 3PH 4W 0	25	480	3	1/0	THHN	18"	UNDER SLAB
5	15A 480V 3PH 4W 0	15	480	3	2/0	THHN	18"	UNDER SLAB
6	10A 480V 3PH 4W 0	10	480	3	2/0	THHN	18"	UNDER SLAB
7	5A 480V 3PH 4W 0	5	480	3	2/0	THHN	18"	UNDER SLAB
8	3A 480V 3PH 4W 0	3	480	3	2/0	THHN	18"	UNDER SLAB
9	2A 480V 3PH 4W 0	2	480	3	2/0	THHN	18"	UNDER SLAB
10	1A 480V 3PH 4W 0	1	480	3	2/0	THHN	18"	UNDER SLAB



**POWER RISER DIAGRAM**



DATE: 6/8/2022  
 DRAWN BY: DSG  
 DESIGNED BY: DRW  
 REVIEWED BY: CHK

SHEET NAME: E-1

**NEW MEADOWS IDAHO FAMILY DOLLAR ADDITION**  
 301 VIRGINIA ST, NEW MEADOWS, ID 83664

**ENGINEERING SPECIALISTS**  
 Structural Geotech  
 1676 SOUTH 3200 WEST  
 LOGAN, UT 84321

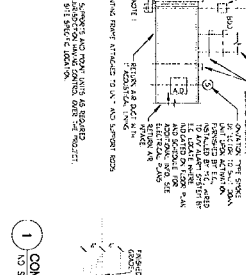
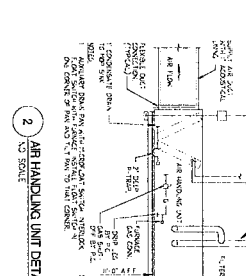
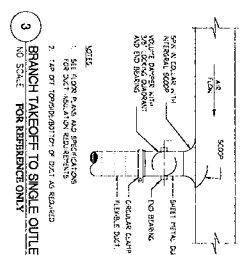
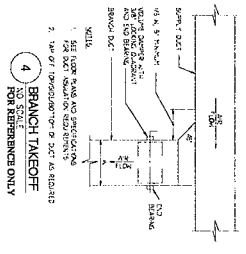


**HVAC GENERAL NOTES**

1. ALL WORK SHALL BE IN ACCORDANCE WITH THE 2015 INTERNATIONAL MECHANICAL CONTRACT DOCUMENTS, 10TH EDITION, AND THE 2015 INTERNATIONAL MECHANICAL CONTRACT DOCUMENTS, 10TH EDITION, AND THE 2015 INTERNATIONAL MECHANICAL CONTRACT DOCUMENTS, 10TH EDITION.
2. ALL WORK SHALL BE IN ACCORDANCE WITH THE 2015 INTERNATIONAL MECHANICAL CONTRACT DOCUMENTS, 10TH EDITION, AND THE 2015 INTERNATIONAL MECHANICAL CONTRACT DOCUMENTS, 10TH EDITION, AND THE 2015 INTERNATIONAL MECHANICAL CONTRACT DOCUMENTS, 10TH EDITION.
3. ALL WORK SHALL BE IN ACCORDANCE WITH THE 2015 INTERNATIONAL MECHANICAL CONTRACT DOCUMENTS, 10TH EDITION, AND THE 2015 INTERNATIONAL MECHANICAL CONTRACT DOCUMENTS, 10TH EDITION, AND THE 2015 INTERNATIONAL MECHANICAL CONTRACT DOCUMENTS, 10TH EDITION.
4. ALL WORK SHALL BE IN ACCORDANCE WITH THE 2015 INTERNATIONAL MECHANICAL CONTRACT DOCUMENTS, 10TH EDITION, AND THE 2015 INTERNATIONAL MECHANICAL CONTRACT DOCUMENTS, 10TH EDITION, AND THE 2015 INTERNATIONAL MECHANICAL CONTRACT DOCUMENTS, 10TH EDITION.
5. ALL WORK SHALL BE IN ACCORDANCE WITH THE 2015 INTERNATIONAL MECHANICAL CONTRACT DOCUMENTS, 10TH EDITION, AND THE 2015 INTERNATIONAL MECHANICAL CONTRACT DOCUMENTS, 10TH EDITION, AND THE 2015 INTERNATIONAL MECHANICAL CONTRACT DOCUMENTS, 10TH EDITION.

**FOR REFERENCE ONLY  
VENTILATION CALCULATIONS**

VENTILATION CALCULATIONS  
 CALCULATION BASED ON 2015 INTERNATIONAL MECHANICAL CONTRACT DOCUMENTS, 10TH EDITION.  
 1. ROOM VOLUME: 10,000 CF  
 2. AIR CHANGES PER HOUR (ACH): 10  
 3. FRESH AIR FLOW (CFM): 1000  
 4. FRESH AIR FLOW (GPM): 13.3  
 5. FRESH AIR FLOW (GPM): 13.3  
 6. FRESH AIR FLOW (GPM): 13.3  
 7. FRESH AIR FLOW (GPM): 13.3  
 8. FRESH AIR FLOW (GPM): 13.3  
 9. FRESH AIR FLOW (GPM): 13.3  
 10. FRESH AIR FLOW (GPM): 13.3

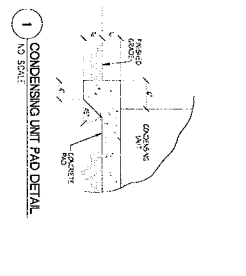
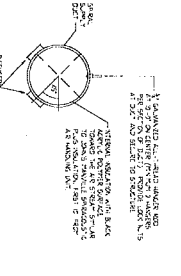


**FAN SCHEDULE - REFER TO MANUAL**

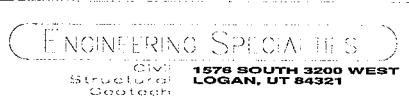
FAN NO.	TYPE	SIZE	HP	CFM	SPR	WATER	WATER	WATER
1	...	...	...	...	...	...	...	...
2	...	...	...	...	...	...	...	...
3	...	...	...	...	...	...	...	...
4	...	...	...	...	...	...	...	...
5	...	...	...	...	...	...	...	...

**DEFUSER SCHEDULE - FOR REFERENCE ONLY**

DEFUSER NO.	TYPE	SIZE	HP	CFM	SPR	WATER	WATER	WATER
1	...	...	...	...	...	...	...	...
2	...	...	...	...	...	...	...	...
3	...	...	...	...	...	...	...	...
4	...	...	...	...	...	...	...	...
5	...	...	...	...	...	...	...	...



DATE:	6/8/2022	DSG
DRAWN BY:	DSG	DRW
DESIGNED BY:	DSG	CHK
REVIEWED BY:	CHK	



**NEW MEADOWS IDAHO  
FAMILY DOLLAR ADDITION**  
301 VIRGINIA ST., NEW MEADOWS, ID 83654

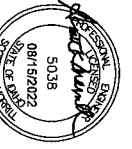
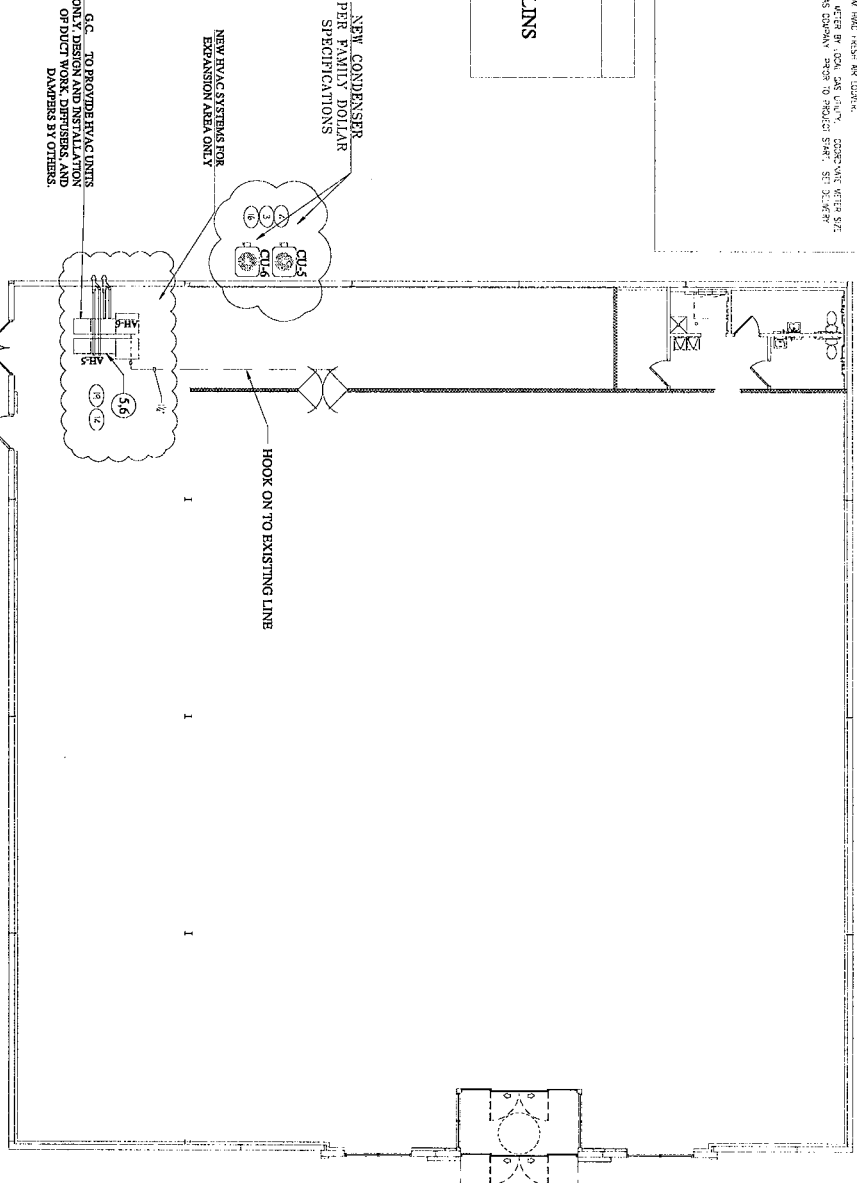
**MECHANICAL PLAN KEYED NOTES**

- 1. NO. 182.
- 2. CONDENSATE DRAIN TO BE INSTALLED TO REMOVE CONDENSATE FROM THE CONDENSERS. CONDENSATE DRAIN TO BE INSTALLED TO REMOVE CONDENSATE FROM THE CONDENSERS. CONDENSATE DRAIN TO BE INSTALLED TO REMOVE CONDENSATE FROM THE CONDENSERS.
- 3. CONDENSATE DRAIN TO BE INSTALLED TO REMOVE CONDENSATE FROM THE CONDENSERS. CONDENSATE DRAIN TO BE INSTALLED TO REMOVE CONDENSATE FROM THE CONDENSERS. CONDENSATE DRAIN TO BE INSTALLED TO REMOVE CONDENSATE FROM THE CONDENSERS.
- 4. CONDENSATE DRAIN TO BE INSTALLED TO REMOVE CONDENSATE FROM THE CONDENSERS. CONDENSATE DRAIN TO BE INSTALLED TO REMOVE CONDENSATE FROM THE CONDENSERS. CONDENSATE DRAIN TO BE INSTALLED TO REMOVE CONDENSATE FROM THE CONDENSERS.
- 5. CONDENSATE DRAIN TO BE INSTALLED TO REMOVE CONDENSATE FROM THE CONDENSERS. CONDENSATE DRAIN TO BE INSTALLED TO REMOVE CONDENSATE FROM THE CONDENSERS. CONDENSATE DRAIN TO BE INSTALLED TO REMOVE CONDENSATE FROM THE CONDENSERS.
- 6. CONDENSATE DRAIN TO BE INSTALLED TO REMOVE CONDENSATE FROM THE CONDENSERS. CONDENSATE DRAIN TO BE INSTALLED TO REMOVE CONDENSATE FROM THE CONDENSERS. CONDENSATE DRAIN TO BE INSTALLED TO REMOVE CONDENSATE FROM THE CONDENSERS.
- 7. CONDENSATE DRAIN TO BE INSTALLED TO REMOVE CONDENSATE FROM THE CONDENSERS. CONDENSATE DRAIN TO BE INSTALLED TO REMOVE CONDENSATE FROM THE CONDENSERS. CONDENSATE DRAIN TO BE INSTALLED TO REMOVE CONDENSATE FROM THE CONDENSERS.
- 8. CONDENSATE DRAIN TO BE INSTALLED TO REMOVE CONDENSATE FROM THE CONDENSERS. CONDENSATE DRAIN TO BE INSTALLED TO REMOVE CONDENSATE FROM THE CONDENSERS. CONDENSATE DRAIN TO BE INSTALLED TO REMOVE CONDENSATE FROM THE CONDENSERS.
- 9. CONDENSATE DRAIN TO BE INSTALLED TO REMOVE CONDENSATE FROM THE CONDENSERS. CONDENSATE DRAIN TO BE INSTALLED TO REMOVE CONDENSATE FROM THE CONDENSERS. CONDENSATE DRAIN TO BE INSTALLED TO REMOVE CONDENSATE FROM THE CONDENSERS.
- 10. CONDENSATE DRAIN TO BE INSTALLED TO REMOVE CONDENSATE FROM THE CONDENSERS. CONDENSATE DRAIN TO BE INSTALLED TO REMOVE CONDENSATE FROM THE CONDENSERS. CONDENSATE DRAIN TO BE INSTALLED TO REMOVE CONDENSATE FROM THE CONDENSERS.
- 11. CONDENSATE DRAIN TO BE INSTALLED TO REMOVE CONDENSATE FROM THE CONDENSERS. CONDENSATE DRAIN TO BE INSTALLED TO REMOVE CONDENSATE FROM THE CONDENSERS. CONDENSATE DRAIN TO BE INSTALLED TO REMOVE CONDENSATE FROM THE CONDENSERS.
- 12. CONDENSATE DRAIN TO BE INSTALLED TO REMOVE CONDENSATE FROM THE CONDENSERS. CONDENSATE DRAIN TO BE INSTALLED TO REMOVE CONDENSATE FROM THE CONDENSERS. CONDENSATE DRAIN TO BE INSTALLED TO REMOVE CONDENSATE FROM THE CONDENSERS.
- 13. CONDENSATE DRAIN TO BE INSTALLED TO REMOVE CONDENSATE FROM THE CONDENSERS. CONDENSATE DRAIN TO BE INSTALLED TO REMOVE CONDENSATE FROM THE CONDENSERS. CONDENSATE DRAIN TO BE INSTALLED TO REMOVE CONDENSATE FROM THE CONDENSERS.
- 14. CONDENSATE DRAIN TO BE INSTALLED TO REMOVE CONDENSATE FROM THE CONDENSERS. CONDENSATE DRAIN TO BE INSTALLED TO REMOVE CONDENSATE FROM THE CONDENSERS. CONDENSATE DRAIN TO BE INSTALLED TO REMOVE CONDENSATE FROM THE CONDENSERS.
- 15. CONDENSATE DRAIN TO BE INSTALLED TO REMOVE CONDENSATE FROM THE CONDENSERS. CONDENSATE DRAIN TO BE INSTALLED TO REMOVE CONDENSATE FROM THE CONDENSERS. CONDENSATE DRAIN TO BE INSTALLED TO REMOVE CONDENSATE FROM THE CONDENSERS.
- 16. CONDENSATE DRAIN TO BE INSTALLED TO REMOVE CONDENSATE FROM THE CONDENSERS. CONDENSATE DRAIN TO BE INSTALLED TO REMOVE CONDENSATE FROM THE CONDENSERS. CONDENSATE DRAIN TO BE INSTALLED TO REMOVE CONDENSATE FROM THE CONDENSERS.
- 17. CONDENSATE DRAIN TO BE INSTALLED TO REMOVE CONDENSATE FROM THE CONDENSERS. CONDENSATE DRAIN TO BE INSTALLED TO REMOVE CONDENSATE FROM THE CONDENSERS. CONDENSATE DRAIN TO BE INSTALLED TO REMOVE CONDENSATE FROM THE CONDENSERS.
- 18. CONDENSATE DRAIN TO BE INSTALLED TO REMOVE CONDENSATE FROM THE CONDENSERS. CONDENSATE DRAIN TO BE INSTALLED TO REMOVE CONDENSATE FROM THE CONDENSERS. CONDENSATE DRAIN TO BE INSTALLED TO REMOVE CONDENSATE FROM THE CONDENSERS.
- 19. CONDENSATE DRAIN TO BE INSTALLED TO REMOVE CONDENSATE FROM THE CONDENSERS. CONDENSATE DRAIN TO BE INSTALLED TO REMOVE CONDENSATE FROM THE CONDENSERS. CONDENSATE DRAIN TO BE INSTALLED TO REMOVE CONDENSATE FROM THE CONDENSERS.
- 20. CONDENSATE DRAIN TO BE INSTALLED TO REMOVE CONDENSATE FROM THE CONDENSERS. CONDENSATE DRAIN TO BE INSTALLED TO REMOVE CONDENSATE FROM THE CONDENSERS. CONDENSATE DRAIN TO BE INSTALLED TO REMOVE CONDENSATE FROM THE CONDENSERS.

**MECHANICAL SYSTEMS SCOPE OF WORK FOR ADDITION ONLY:**

- INSTALL AIR HANDLERS AH-5,6
- INSTALL CONDENSERS CU-5,6
- STUB DUCT WORK 36" BELOW THE BOTTOM OF ROOF PURLINS
- INSTALL PIPING CU-5,6 TO AH-5,6
- INSTALL CONDENSATE LINE FOR UNITS AH-5,6

**NOTE:**  
EXISTING SYSTEMS ARE TO REMAIN IN FULL OPERATION DURING CONSTRUCTION OF EXPANSION AREA. NO CHANGES OR MODIFICATIONS TO BE MADE TO EXISTING MECHANICAL SYSTEMS.



**1 PARTIAL MECHANICAL PLAN**

**M-2**

DATE:	6/8/2022	
DRAWN BY:	DSG	
DESIGNED BY:	DRW	
REVIEWED BY:	CHK	
No.	Revision	Date

**NEW MEADOWS IDAHO FAMILY DOLLAR ADDITION**  
301 VIRGINIA ST., NEW MEADOWS, ID 83654

**ENGINEERING SPECIALTIES**  
1576 SOUTH 3200 WEST  
LOGAN, UT 84321