

# Ignite Idaho Family Resource Center



*Strengthening Families. Strengthening Communities.*

# The Founding of Ignite Idaho



-Founded in 2021 by Traci Jamieson, Licenced Clinical Professional Counselor and Ashley McCoy, Licensed Marriage and Family Therapist

-Response to desperate need in community

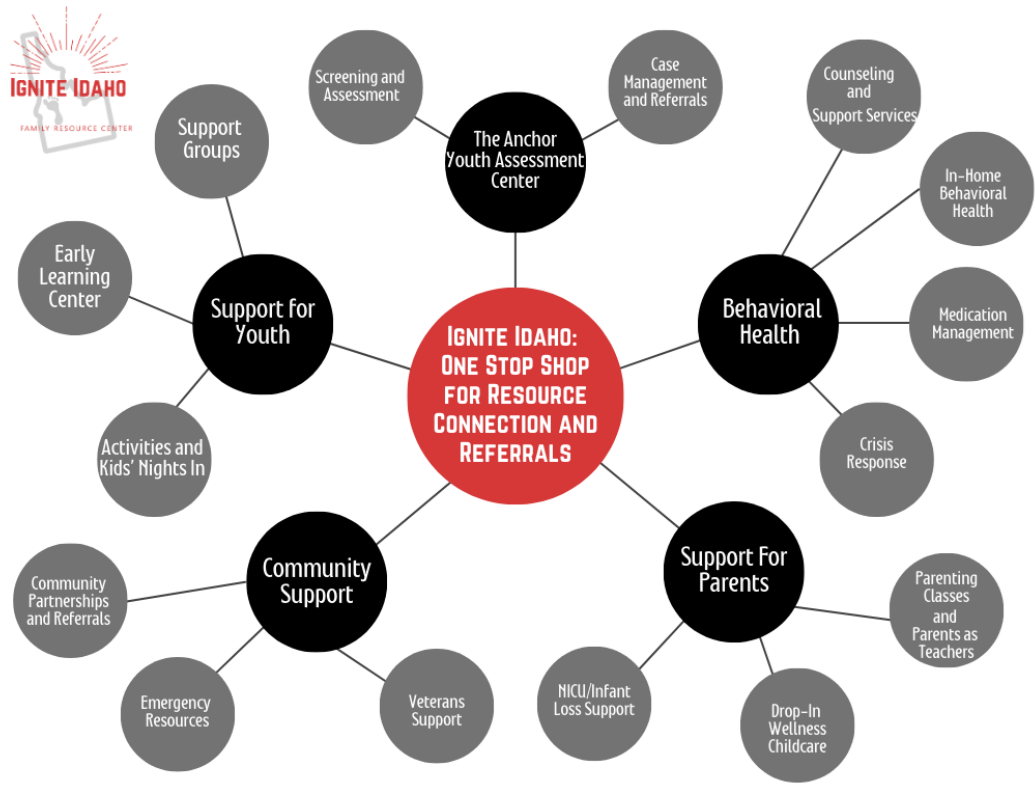
-Our mission is to strengthen families and prevent child abuse



# Ignite Idaho Family Resource Center Video



# What We Do: Our Resource Center Model



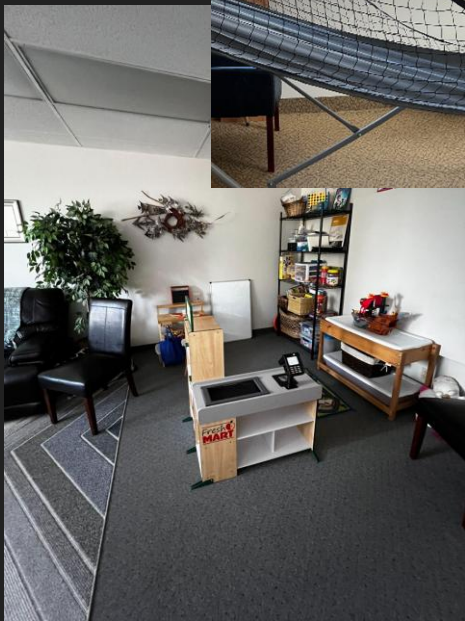
-Our goal is to connect individuals and families with community resources

-We offer behavioral health services, parenting classes, youth support groups, and a youth assessment center in-house

# Our Family Resource Center







# How Drop-In Wellness Childcare Started

- Parents stressed out at appointments
- Daughter had to take 3 kids to the ER at one point and needed help
- A means of supporting both families and providers in our area



# How Drop-In Childcare Works



- Families call to ensure we have a spot
- They drop off their child for short-term childcare
- We provide quality childcare
- Parents get to care for their wellness



# Data



- We average 100 drop-ins per month
- We have been able to allow numerous families to go to crucial recovery classes
- We charge \$8 per hour for families who can afford it, but through grant funding, we are able to provide services to all families in need

# The Importance of Supporting Parents

- Single parents face significant challenges
- Childcare shortages: West Central Mountains have a shortage of 200+ childcare seats in our area
- Support for parents is a huge protective factor. By reducing parental stress, parents are better able to engage.
- Providers are also able to better focus on clients and have meaningful appointments.



# Youth Support Groups



-We teach kids how to build healthy connections, healthy boundaries, and learn how to communicate their needs effectively. We play games, plan community activities, and have tons of fun.

-We also have an anxiety-specific and grief-specific support group

-Sibshops for children with high-demand siblings



# Assessment Center Ignite Idaho



## Assessment Center AT IGNITE IDAHO

### OBJECTIVE

Our goal is to keep youth out of or prevent further involvement with the juvenile justice and child welfare systems by connecting families to community-based resources and supportive services. Through in-depth assessment and evidence-based screening tools, center staff work with youth and families to understand factors contributing to concerning behaviors. An individualized case plan then connects them to resources and services necessary to overcome barriers and thrive.

### PURPOSE

Right now, Valley and Adams Counties do not have viable alternatives to the juvenile justice and child welfare systems to help at-risk and in-crisis youth and their families. An assessment center would allow us to identify the underlying cause of concerning behaviors, connect youth and families with community-based resources sooner, and ultimately keep them out of the justice and welfare systems altogether.

With a local assessment center, we can:

- Decrease stigma in youth and families
- Increase graduation rates
- Decrease incarceration rates for at-risk youth as they get older
- Decrease recidivism rates

### SOLUTIONS

Following the NAC Assessment Center Model, we believe the existence of and daily operations of our assessment center will directly address our problem by connecting youth and families with resources on a daily basis. Through screening and assessment, we will be able to make immediate connections with people who might otherwise go unnoticed or unassisted in their struggles. Youth and families will be given the resources they need to end cycles and form solid community connections.

### SERVICES

#### Screening and Assessment

Staff will use evidence-based screening and assessment tools, in conjunction with in-home behavioral health consultation services. Screening and assessment will be available in our McCall office or through mobilization efforts in surrounding towns.

#### Case Planning

Based on the needs identified through screening and assessment, our staff will build individual case plans and connect families to resources and make the appropriate referrals.

#### Evaluation

For participants in our program, we will send out a monthly survey to assess not only client progress but also satisfaction with resources and referrals.

#### Staff Support Groups

Our mental health partners will provide complimentary weekly support groups for our staff, where they can find support and prevent burnout.

### AT A GLANCE

#### OUR MISSION

Ignite Idaho Family Resource Center, a 501(c)3 nonprofit, aims to strengthen families and prevent child abuse through a multi-faceted approach based on education, prevention, and intervention.

#### STEPS TO SUCCESS

- Screen and assess
- Identify needs
- Connect to resources and make referrals

### The Model

*The Harbor, a group of 5 facilities in Las Vegas, Nevada, is our model assessment center for Valley and Adams Counties.*

*We want to model our own practices based on theirs:*

- Dedicated Law Enforcement Program with the goal of allowing officers to do their jobs, not have to feel like a babysitter or social worker
- Youth and family are "wrapped" in services that address underlying issues
- 90% of The Harbor's youth never enter the formal justice system



# Crisis Response: How It Works

-Anyone can call. We'll go to them or meet them in our crisis office.

-A licensed mental health professional responds to de-escalate and determine next steps: making a safety plan, calling the police, or going to the emergency room

-We provide ongoing support. Often, something that presents as a crisis is something more: housing problems, utility problems, family conflict, vehicle problems.

-Maslow's hierarchy of needs illustrates the need for basic needs before higher levels of thriving can occur.



Maslow's hierarchy of needs

# Crisis Response Program: What It Is

- There are no in-person crisis response options in our area. Benchmark out of Boise is a minimum 2.5 hours to send mental professionals to the county.
- Our goal is to provide the chance to get healing, resources, and treatment in our own community first.
- Reduce burden on law enforcement and emergency room.
- Connect individuals in crisis with resources to become stable and live independently

