

**TRI-COUNTY**  
Engineering Consultants

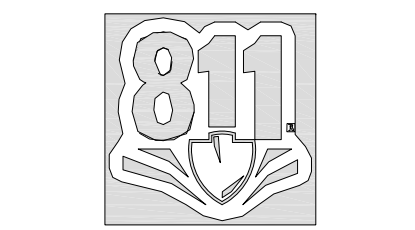
48701 Hayes Road  
Shelby Twp, MI 48315  
TEL: (810) 394-7887  
FAX: (586) 566-4642

www.Tri-CountyEng.com



CLIENT NAME:  
VILLAGE OF NEW HAVEN  
MACOMB COUNTY

3 WORKING DAYS  
800-482-7171



Know what's below.  
Call before you dig.

PRIOR TO CONSTRUCTION, ALL EXISTING UTILITIES LOCATION AND DEPTH WITHIN THE PROJECT AREA SHALL BE FIELD VERIFIED. CALL MISS DIG SYSTEM 3 WORKING DAYS PRIOR TO CONSTRUCTION.

UTILITY INFORMATION SHOWN ON THIS DRAWING ARE APPROXIMATE AND MAY BE ACCORDING TO AVAILABLE RECORD OR DISCLOSED INFORMATION BY VARIOUS UTILITY COMPANIES, PUBLIC AGENCIES, OR OTHER SOURCES AND THIS MAY NOT NECESSARILY REFLECT ACTUAL FIELD LOCATIONS AND NO GUARANTEE IS GIVEN TO COMPLETENESS OR ACCURACY.

COPYRIGHT (C) 2018. ALL RIGHTS RESERVED. THIS DRAWING AND ALL INFORMATION CONTAINED HEREIN ARE NOT TO BE USED OR REPRODUCED WITHOUT WRITTEN PERMISSION BY TRI-COUNTY ENGINEERING CONSULTANTS

PROJECT NAME:  
VILLAGE OF NEW HAVEN

**VILLAGE  
STREETS MAP**

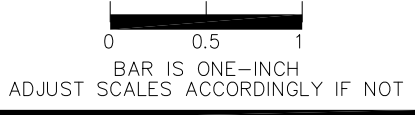
PROJECT LOCATION:  
SEC 27/28/33/34, T04N, R14E  
VILLAGE OF NEW HAVEN  
MACOMB COUNTY

Drawn By: BK  
Checked By: SS  
Approved By: SS

REVISIONS:

1. PRELIM 05/03/19

SCALE VERIFICATION:



SCALE:  
1"=400'

PROJECT NO:  
NH17014

DRAWING NO:  
NH MAP

Sheet 1 of 1

**DISCLAIMER:**  
Existing site features and/or legal description in this exhibit are compiled from available public record info. Tri-County Engineering did not provide field survey or field verification and shall not be held liable for any errors or discrepancies of actual data.