



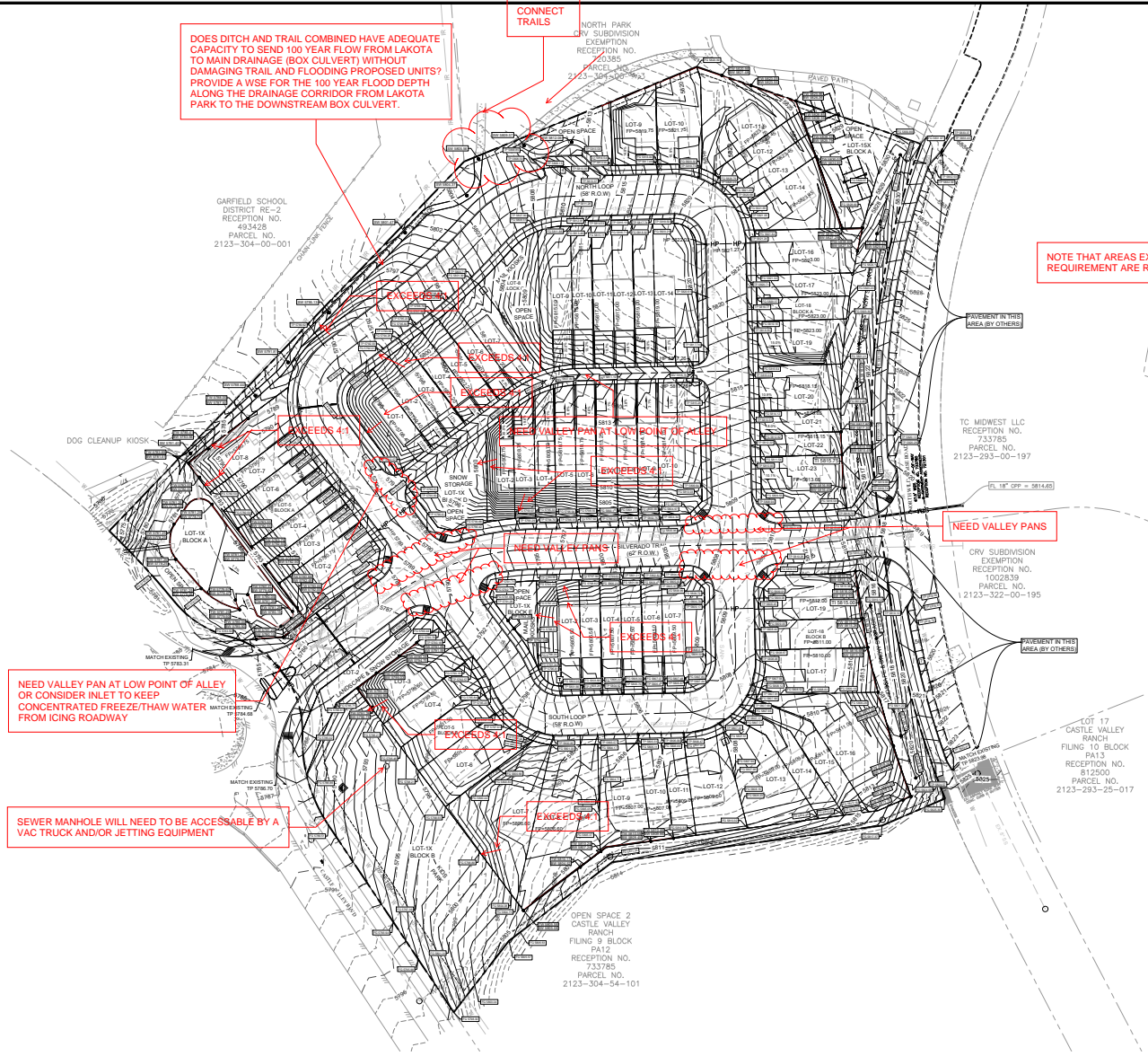
DOES DITCH AND TRAIL COMBINED HAVE ADEQUATE CAPACITY TO SEND 100 YEAR FLOW FROM LAKOTA TO MAIN DRAINAGE (BOX CULVERT) WITHOUT DAMAGING TRAIL AND FLOODING PROPOSED UNITS? PROVIDE A WISE FOR THE 100 YEAR FLOOD DEPTH ALONG THE DRAINAGE CORRIDOR FROM LAKOTA PARK TO THE DOWNSTREAM BOX CULVERT.

CONNECT TRAILS

MINIMUM EARTH GRADES = 1%
 MAXIMUM EARTH GRADES ON LOT = 25%
 MAXIMUM DITCH GRADE = 25%
 ALL SITE DISTURBED AREAS SHALL BE STABILIZED PER EROSION CONTROL PLAN, THE TOWN STANDARD.
 HOME BUILDER SHALL PROVIDE EXPOSED GRADE BEAM WHERE NEEDED TO ENSURE SIDE SLOPED DO NOT EXCEED 25%.
 PROPOSED CONTOURS ARE SHOWN FOR REFERENCE ONLY. THE SITE SHALL BE GRADED PER SPOT SHOTS PROVIDED.
 PROVIDE DROP GARAGES WHERE DRIVEWAY SLOPES EXCEEDS 15%.

NOTE THAT AREAS EXCEEDING THE 25% OR 4:1 REQUIREMENT ARE REFLECTED BELOW.

GRADING LEGEND	
EXISTING MAJOR CONTOURS	-----
EXISTING MAJOR CONTOURS	-----
MINOR CONTOURS	-----
MAJOR CONTOURS	-----
SWALE	-----
HIGH POINT	HP-----HP
STORM PIPE	-----
RETAINING WALL	-----
RIP RAP	-----
FINISH FLOOR ELEVATION	467.00 FF
TOP OF CURB ELEVATION	466.00 TC
OUTTER ELEVATION	465.50 G
SIDEWALK ELEVATION	465.00 SW
TOP OF PAVEMENT	464.00 TP
GROUND ELEVATION	463.00 GR
DRAINAGE FLOW DIRECTION	+
CURB INLET	○
STORM MANHOLE	●
STORM CLEANOUT	○
SANITARY SEWER MANHOLE	○
SANITARY SEWER CLEANOUT	○
SANITARY SEWER DOUBLE CLEANOUT	○
SANITARY SEWER SAMPLE POINT	○
GREASE TRAP	■
DOMESTIC WATER METER	■
IRRIGATION METER	■
GAS METER	■
TRANSFORMER	□
LIGHT POLE	+
POWER POLE	+



NEED VALLEY PAN AT LOW POINT OF ALLEY OR CONSIDER INLET TO KEEP CONCENTRATED FREEZE/THAW WATER FROM ICING ROADWAY

SEWER MANHOLE WILL NEED TO BE ACCESSIBLE BY A VAC TRUCK AND/OR JETTING EQUIPMENT

NEED VALLEY PANS

- GRADING NOTES**
1. FINISH FLOOR IS 0.5' ABOVE THE FINISH PAD.
 2. GRADE SLOPES AWAY FROM THE BUILDING PADS WITH A MINIMUM FALL OF 6 INCHES OVER 10 FEET. REFER TO GEOTECHNICAL PLANS AND APPLY THE MORE STRINGENT RECOMMENDATION.
 3. PROVIDE DROP GARAGES WHERE DRIVEWAY SLOPES EXCEEDS 15%.
 4. DRIVE GRADIENT SHALL NOT EXCEED 15%.
 5. RETAINING WALLS/ DROP BRICK LEDGE/ EXPOSED BEAMS ARE REQUIRED WHERE SLOPE EXCEEDS 4:1. BUILDER HAS DISCRETION TO USE ONE, SOME OR ALL, TO ACHIEVE GRADES.
 6. DRAINAGE ON SIDE LOT LINES GRADE AT MINIMUM 1.00% ADJACENT TO PADS.
 7. THE RETAINING WALLS SHOWN ARE FOR HORIZONTAL AND VERTICAL LOCATIONS ONLY. A GEOTECHNICAL OR STRUCTURAL ENGINEER'S DESIGN PLANS ARE NECESSARY FOR PROPER DESIGN OF WALL AND BACK FILL REQUIREMENTS.
 8. NO SLOPES TO EXCEED 4H:1V WITHOUT SLOPE STABILIZATION.

ALL GEOTECHNICAL ENGINEERING RECOMMENDATIONS SHALL BE ADHERED TO REPORT DONE BY K+A ASSOCIATES, INC. DATED JUNE 2025.

!! WARNING !!
 EXISTING UTILITIES IN THE AREA CONTRACTOR SHALL FIELD VERIFY THE LOCATION OF ALL EXISTING UTILITIES WITH THE PROVIDER PRIOR TO START OF CONSTRUCTION AND SHALL IMMEDIATELY NOTIFY THE ENGINEER OF ANY CONFLICTS DISCOVERED. CONTRACTOR IS RESPONSIBLE FOR COORDINATING UTILITY RELOCATION WHERE NECESSARY AND PROTECTING EXISTING UTILITIES SHOWN OR NOT SHOWN. IF ANY EXISTING UTILITIES ARE DAMAGED, THE CONTRACTOR SHALL REPLACE THEM AT THEIR OWN EXPENSE.

GRADING PLAN	
ARCHWOOD TOWNHOMES	
CASTLE VALLEY BLVD	
67 RESIDENTIAL LOTS & 7 OPEN AREAS	
TOWN OF NEW CASTLE	
GARFIELD COUNTY, COLORADO 81647	



17774 PRESTON RD
 SUITE 208
 DALLAS, TEXAS 75252
 OFFICE: (214) 454-7255

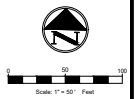
P.E.	DES.	DATE	SCALE	PROJECT NO.	SHEET NO.
RY	SS	08/25/25	SCALE 8x11	38-25	C-4.0



Know what's below.
 Call before you dig.

NO.	DATE	DESCRIPTION	BY
1	08/25/25	1ST PRELIMINARY PUD SUBMITTAL	RY
.	.	.	.
.	.	.	.
.	.	.	.
.	.	.	.
.	.	.	.

FOR PRELIMINARY REVIEW ONLY



EROSION CONTROL LEGEND	
TEMPORARY CONSTRUCTION ENTRANCE	
TEMPORARY CONCRETE WASHOUT AREA	
RIP RAP	
TEMPORARY SILT FENCE	SF
TEMPORARY COMPOST FILTER SOCK	FS
HIGH POINT	HP
LIMITS OF DISTURBANCE	
TEMPORARY INLET PROTECTION	
ROCK BERM	

EROSION CONTROL GENERAL NOTES

- EVERY SOIL DISTURBING ACTIVITY SHALL HAVE AN ACCOMPANYING EROSION CONTROL PLAN.
- THE STORM WATER POLLUTION PREVENTION PLAN (SWPP) SHALL BE READILY AVAILABLE FOR REVIEW BY FEDERAL, STATE, OR LOCAL OFFICIALS.
- NO SOIL DISTURBING ACTIVITIES WILL OCCUR PRIOR TO THE SWPPS AND ASSOCIATED BEST MANAGEMENT PRACTICES (BMP) BEING FULLY IMPLEMENTED AND THEN INSPECTED.
- THE SITE SHALL BE INSPECTED BY THE CONTRACTOR OR HIS REPRESENTATIVE WEEKLY, AND AFTER ANY MAJOR STORM, ADJUSTMENTS/REPAIRS TO THE EROSION CONTROL MEASURES SHOULD BE MADE AS NEEDED.
- CONTRACTOR SHALL VEGETATE ALL DISTURBED AREAS IMMEDIATELY UPON COMPLETION OF GRADING ACTIVITIES. FINAL ACCEPTANCE OF A SITE SHALL BE CONTINGENT UPON VEGETATION BEING ESTABLISHED IN ALL DISTURBED AREAS.
- ADEQUATE MEASURES SHALL BE TAKEN TO PREVENT EROSION, IN THE EVENT THAT SIGNIFICANT EROSION OCCURS AS A RESULT OF CONSTRUCTION THE CONTRACTOR SHALL RESTORE THE ERODED AREA TO ORIGINAL CONDITION OR BETTER.
- TEMPORARY STONE STABILIZED CONSTRUCTION ENTRANCE SHALL HAVE THE FOLLOWING MINIMUM DIMENSIONS: 12' WIDE X 70' LONG X 6" DEEP, 1/2" COARSE AGGREGATE, PLACE FABRIC UNDER STONE.
- THE CONCRETE WASHOUT AREA IS TO BE USED AS A VEHICLE WASH DOWN AREA FOR DEBRIS AND SOIL REMOVAL PRIOR TO EXITING THE SITE.

EROSION CONTROL SUMMARY

PROJECT DESCRIPTION: THE PROJECT SHALL GENERALLY CONFORM TO THE FOLLOWING:

PHASE 1 - GRADING
 A. CONSTRUCT TEMPORARY CONSTRUCTION ENTRANCE, SILT FENCE, AND TREE PROTECTION FENCE ACCORDING TO THE APPROXIMATE LOCATION AND SHOWN ON EROSION CONTROL PLAN, NOTES & DETAIL SHEET, AND LANDSCAPE PLANS.
 B. BEGIN CLEARING AND GRADING OF SITE.
 C. SEED AND RE-VEGETATE SLOPES WHERE SHOWN.

PHASE 2 - UTILITIES
 A. KEEP ALL STORM WATER POLLUTION PREVENTION MEASURES IN PLACE.
 B. INSTALL STORM DRAINS AND OTHER UTILITIES AS SPECIFIED ON PLAN SHEETS.
 C. INSTALL INLET PROTECTION AS INLETS ARE INSTALLED.

PHASE 3 - PAVING
 A. KEEP ALL STORM WATER POLLUTION PREVENTION MEASURES IN PLACE. REMOVE AS NEEDED TO PAVE.
 B. STABILIZE SUBGRADE.
 C. PAVE STREETS AND SIDEWALKS AS SPECIFIED ON PLAN SHEETS.
 D. REMOVE TEMPORARY CONSTRUCTION ENTRANCE.

PHASE 4 - LANDSCAPING AND SOIL STABILIZATION
 A. RE-VEGETATE LOT AND PARKWAYS.
 B. LANDSCAPE CONTRACTOR SHALL RE-VEGETATE ALL AREAS RESERVED FOR LANDSCAPE VEGETATIVE COVERS.
 C. REMOVE EROSION CONTROL DEVICES WHEN GROUND COVER.

SOIL DISTURBING ACTIVITIES WILL INCLUDE CLEARING & GRUBBING, GRADING, TRENCHING IN PREPARATION FOR INSTALLING UTILITIES, BUILDING PAD, PARKING LOT, EROSION & SEDIMENTATION CONTROLS AND TOPSOIL WORK FOR FINAL PLANTING AND SEEDING.

TOTAL PROJECT AREA: 10.315 ACRES
 TOTAL DISTURBED AREA: 10.590 ACRES

NONE SHOWN

EROSION CONTROL FABRIC?
 SURFACE ROUGHENING?
 STRAW WADDLES ON INTERIOR?

WHY ON UPHILL SIDE OF SITE?

HOW WILL YOU ALLUVIATE CONCENTRATED FLOWS ON SITE TO AVOID EROSION AND SEDIMENT DEPOSITION UNTIL PHASE 4?

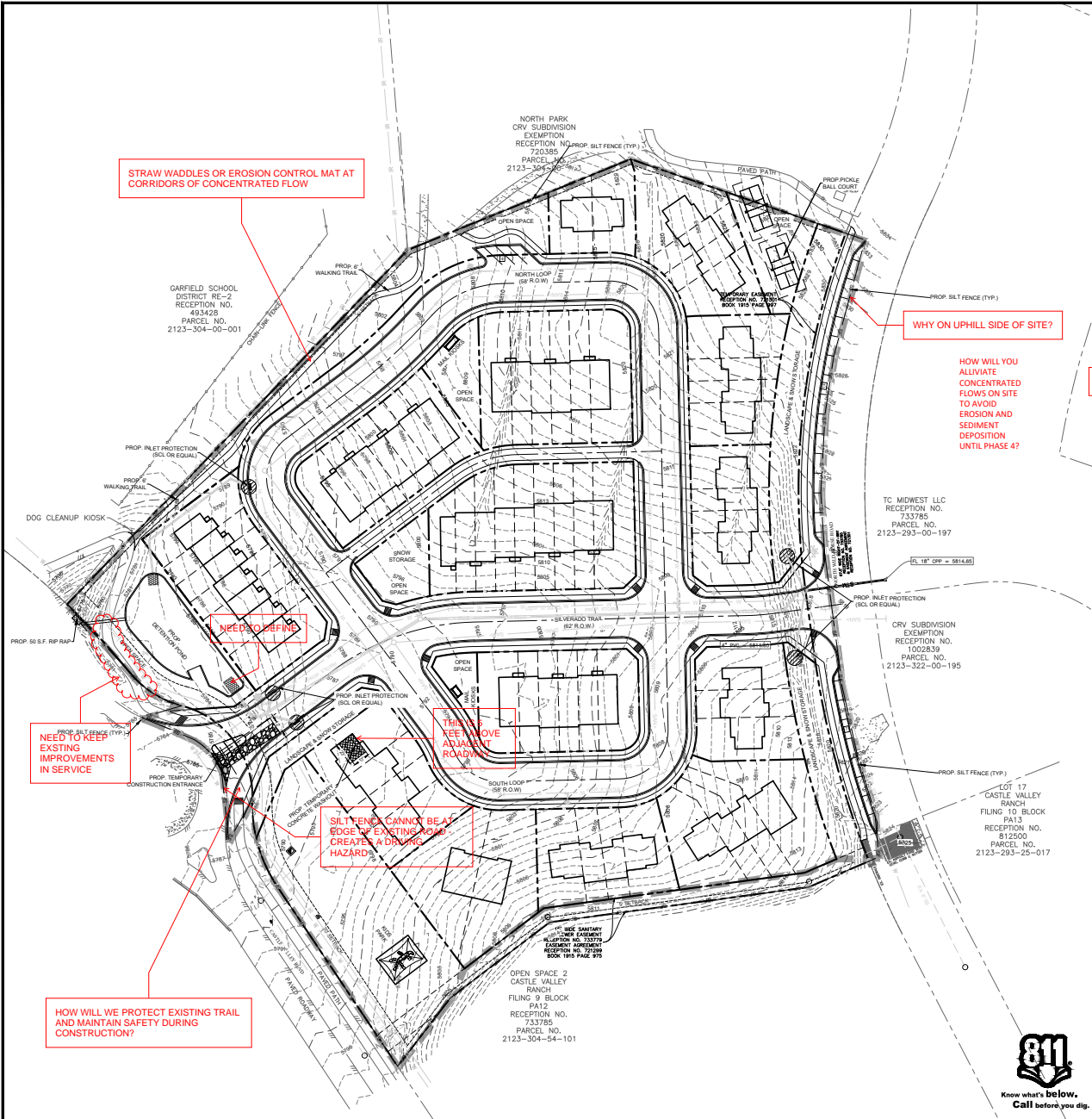
STRAW WADDLES OR EROSION CONTROL MAT AT CORRIDORS OF CONCENTRATED FLOW

NEED TO DEFINE

NEED TO KEEP EXISTING IMPROVEMENTS IN SERVICE

SILT FENCE CANNOT BE AT EDGE OF EXISTING ROAD, CREATE A DRAINING HAZARD

HOW WILL WE PROTECT EXISTING TRAIL AND MAINTAIN SAFETY DURING CONSTRUCTION?



SEE SHEET C-1 FOR TOWN OF NEW CASTLE GENERAL NOTES.

EROSION CONTROL PLAN
 CASTLE VALLEY BLVD
 67 RESIDENTIAL LOTS & 7 OPEN AREAS
 TOWN OF NEW CASTLE
 GARFIELD COUNTY, COLORADO 81647



1774 PRESTON RD
 SUITE 28
 DALLAS, TEXAS 75252
 OFFICE: (214) 454-7255

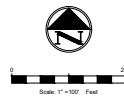
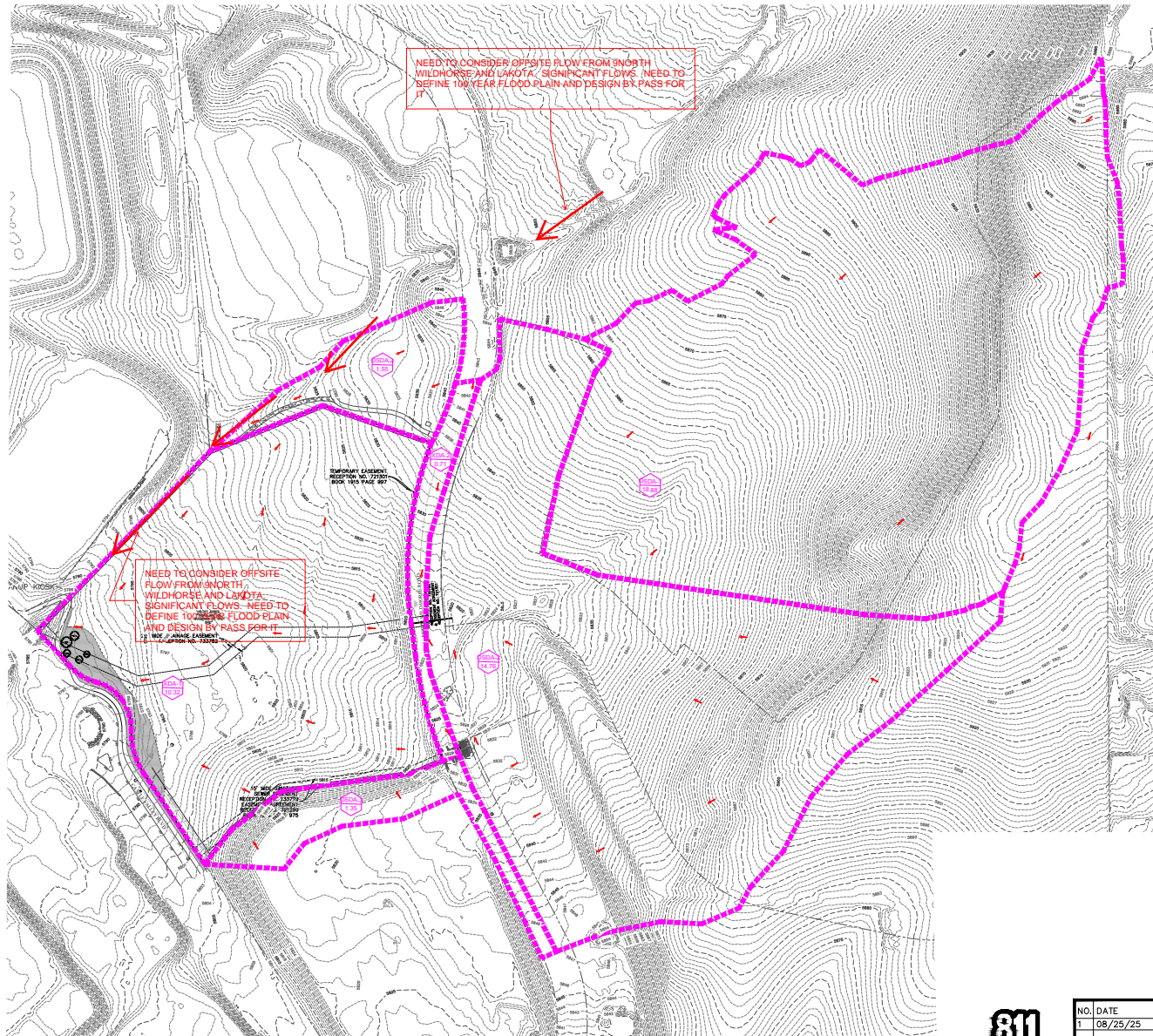
P.E. DES. DATE SCALE PROJECT NO. SHEET NO.
 RT SS 08/25/25 SCALE 1/4" = 1' 38-25
 TEXAS ENGINEERING FIRM # F-20397

C-5.0

NO.	DATE	DESCRIPTION	BY
1	08/25/25	1ST PRELIMINARY PUD SUBMITTAL	RY
.	.	.	.
.	.	.	.
.	.	.	.
.	.	.	.
.	.	.	.

FOR PRELIMINARY REVIEW ONLY





PRE-DRAINAGE LEGEND

EXISTING MAJOR CONTOURS	---
EXISTING MINOR CONTOURS	---
DRAINAGE DIVIDE	---
DRAINAGE AREA BOUNDARY	---
DRAINAGE AREA ROADS	---
DRAINAGE FLOW DIRECTION	---

Pre-Development Drainage Area Calculation Table (25-Year Storm)

Area ID	Total Drainage Area		Runoff Coefficient	Time of Concentration	25-YR STORM		Drains To/Remarks
	(kA)	(acres)			C	Tc (min)	
XDA-1	449,498	10.32	0.53	22.27	2.02	6.88	Drains to Ex Underpass
XDA-2	31,047	0.71	0.88	5.00	4.38	2.75	Drains to project site
OSDA-1	822,480	18.88	*	*	*	9.83	Drains to ex. 18"CPP
OSDA-2	643,026	14.76	0.37	26.52	1.81	9.89	Drains to ex. 18"CPP
OSDA-3	58,975	1.35	0.68	12.30	2.83	2.61	Drains to Castle Valley Blvd through project site
OSDA-4	67,407	1.55	0.33	12.57	2.79	1.42	Drains to Ex Underpass

NOTE:
 * - TAKEN FROM RD DRAINAGE STUDY DONE BY SOPRIS ENGINEERING LLC.
 - FOR TIME OF CONCENTRATION, RUNOFF COEFFICIENT AND INTENSITY REFER TO DRAINAGE REPORT DONE BY "TRIANGLE ENGINEERING" FOR ARCHWOOD TOWNHOMES DATED AUGUST 2002.

PRE-DRAINAGE AREA MAP
ARCHWOOD TOWNHOMES
 CASTLE VALLEY BLVD
 67 RESIDENTIAL LOTS & 7 OPEN AREAS
 TOWN OF NEW CASTLE
 GARFIELD COUNTY, COLORADO 81647



17774 PRESTON RD
 SUITE 205
 DALLAS, TEXAS 75252
 OFFICE: (214) 454-7255

P.E.	DES.	DATE	SCALE	PROJECT NO.	SHEET NO.
RY	SS	08-25-25	SCALE 8/11		C-6.0

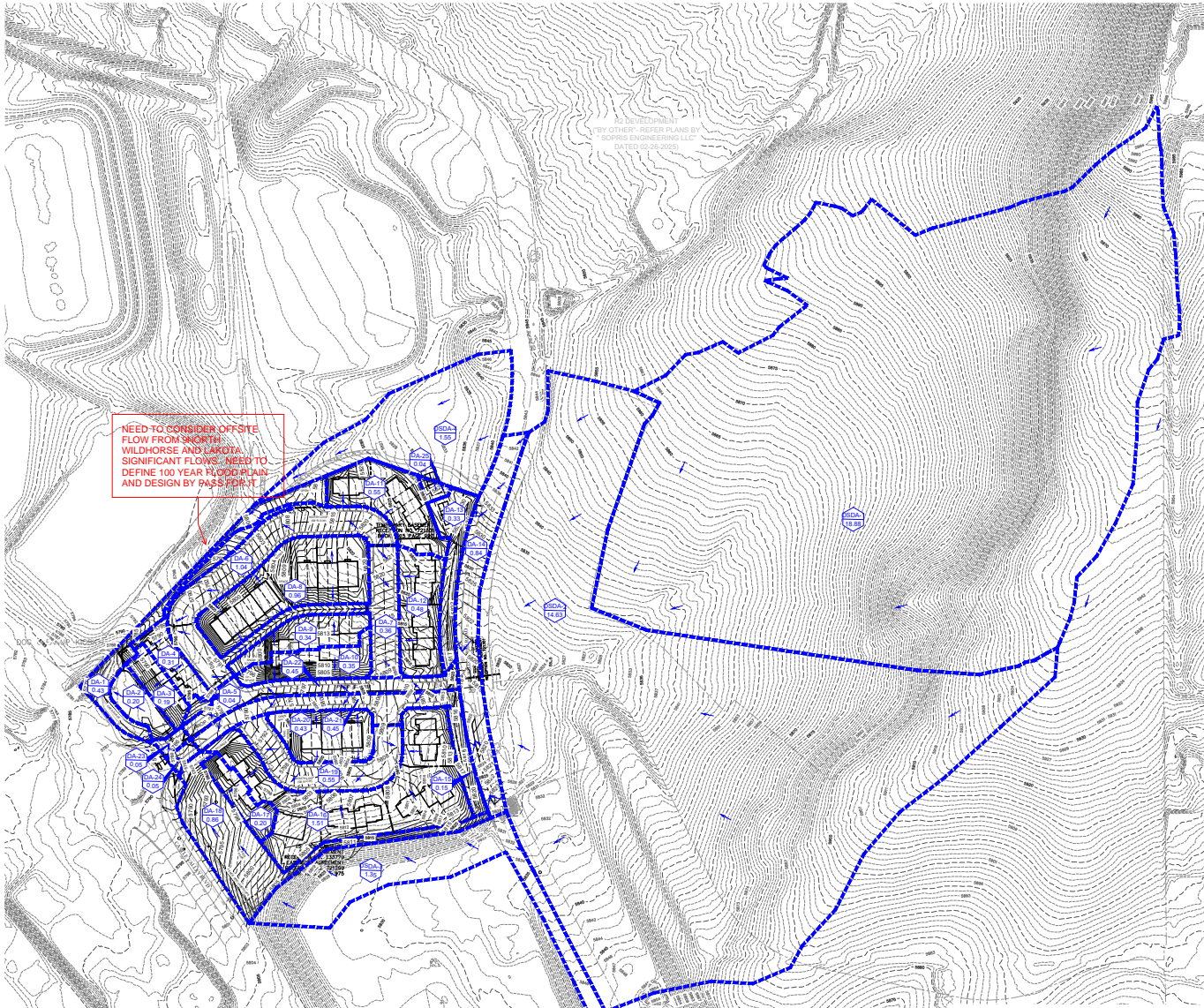
TEXAS ENGINEERING FIRM # F-20397



Know what's below.
 Call before you dig.

NO.	DATE	DESCRIPTION	BY
1	08/25/25	1ST PRELIMINARY PUD SUBMITTAL	RY
.	.	.	.
.	.	.	.
.	.	.	.
.	.	.	.
.	.	.	.

FOR PRELIMINARY REVIEW ONLY



NO DEVELOPMENT
BY OTHER ADJACENT PLANS BY
SOPRIS ENGINEERING LLC
DATED 05/20/2020

NEED TO CONSIDER OFFSITE
FLOW FROM SOUTHWEST
WILDHORSE AND LAROTA
SIGNIFICANT FLOWS. NEED TO
DEFINE 100 YEAR FLOOD PLAIN
AND DESIGN BY PASS FOR IT.



POST-DRAINAGE LEGEND	
EXISTING MINOR CONTOURS	--- 45.0 ---
EXISTING MAJOR CONTOURS	--- 46.0 ---
MINOR CONTOURS	--- 46.5 ---
MAJOR CONTOURS	--- 47.0 ---
DRAINAGE DIVIDE	--- 47.5 ---
HIGH POINT	--- 48.0 ---
DRAINAGE AREA NO.	DA-1
DRAINAGE AREA ACREAGE	1.00
DRAINAGE FLOW DIRECTION	→

Pre-Development Drainage Area Calculation Table (25-Year Storm)									
Areas Drained		Runoff Coefficient	Time of Concentration		25-YR STORM		Drains To/Remarks		
Area ID	Total Drainage Area		C	T _c	Q ₂₅	I ₂₅			
	(k/ft)	(acre)		(min)	(cfs/ft)	(in/hr)			
DA-1	18,733	0.43	0.40	10	3.26	0.56	Drains to Ex. Underpass		
DA-2	8,720	0.20	0.33	10	3.26	0.22	Detention Pond Area		
DA-3	8,293	0.19	0.52	10	3.26	0.32	Drains to Detention Pond Via Surface Flow		
DA-4	13,518	0.31	0.54	10	3.26	0.55	Drains to Detention Pond Via Inlet		
DA-5	1,870	0.04	0.40	5	4.80	0.07	Drains to Detention Pond Via Inlet		
DA-6	45,132	1.04	0.71	10	3.26	2.40	Drains to Detention Pond Via Inlet		
DA-7	15,474	0.36	0.77	10	3.26	0.89	Drains to Detention Pond Via Inlet		
DA-8	41,623	0.96	0.60	10	3.26	1.87	Drains to Detention Pond Via Inlet		
DA-9	14,928	0.34	0.71	10	3.26	0.79	Drains to Detention Pond Via Inlet		
DA-10	15,070	0.35	0.52	10	3.26	0.59	Drains to Detention Pond Via Inlet		
DA-11	23,830	0.55	0.55	10	3.26	0.98	Drains to Detention Pond Via Inlet		
DA-12	20,763	0.48	0.60	10	3.26	0.93	Drains to Detention Pond Via Inlet		
DA-13	14,517	0.33	0.40	10	3.26	0.43	Drains to Detention Pond Via Drop Inlet		
DA-14	36,590	0.84	0.68	10	3.26	1.86	Drains to Detention Pond Via Inlet		
DA-15	6,404	0.15	0.33	10	3.26	0.16	Drains to Detention Pond Via Drop Inlet		
DA-16	65,596	1.51	0.57	10	3.26	2.80	Drains to Detention Pond Via Inlet		
DA-17	8,888	0.20	0.46	10	3.26	0.31	Drains to Castle Valley Blvd		
DA-18	37,492	0.86	0.33	10	3.25	0.92	Drains to Castle Valley Blvd		
DA-19	23,945	0.55	0.88	10	3.26	1.58	Drains to Detention Pond Via Inlet		
DA-20	18,894	0.43	0.60	10	3.26	0.84	Drains to Detention Pond Via Inlet		
DA-21	19,497	0.45	0.88	10	3.26	1.28	Drains to Detention Pond Via Inlet		
DA-22	19,562	0.45	0.88	10	3.26	1.29	Drains to Detention Pond Via Inlet		
DA-23	2,106	0.05	0.88	5	4.80	0.20	Drains to Detention Pond Via Inlet		
DA-24	2,106	0.05	0.88	5	4.80	0.20	Drains to Detention Pond Via Inlet		
DA-25	1,898	0.04	0.66	5	4.80	0.14	Drains to Detention Pond Via Inlet		
OSDA-1	822,480	18.88	*	*	*	9.83	Drains to ex. 18" C/P		
OSDA-2	637,307	14.63	0.37	26.52	1.81	9.80	Drains to ex. 18" C/P		
OSDA-3	18,975	1.35	0.68	12.30	2.88	2.65	Drains to Castle Valley Blvd through project site		
OSDA-4	67,407	1.55	0.33	12.57	2.82	1.44	Drains to Ex. Underpass		

NOTE:
* TAKEN FROM RD DRAINAGE STUDY DONE BY SOPRIS ENGINEERING LLC.
* FOR TIME OF CONCENTRATION, RUNOFF COEFFICIENT AND INTENSITY REFER TO DRAINAGE REPORT DONE BY "TRIANGLE ENGINEERING" FOR ARCHWOOD TOWNHOMES DATED AUGUST 2020.

POST-DRAINAGE AREA MAP
ARCHWOOD TOWNHOMES
CASTLE VALLEY BLVD
67 RESIDENTIAL LOTS & 7 OPEN AREAS
TOWN OF NEW CASTLE
GARFIELD COUNTY, COLORADO 81647



17774 PRESTON RD
SUITE 205
DALLAS, TEXAS 75252
OFFICE: (214) 454-7255

P.E.	DES.	DATE	SCALE	PROJECT NO.	SHEET NO.
RY	SS	08-25-20	SCALE 8/16		C-6.1



NO.	DATE	DESCRIPTION	BY
1	08/25/25	1ST PRELIMINARY PUD SUBMITTAL	RY
.	.	.	.
.	.	.	.
.	.	.	.
.	.	.	.
.	.	.	.

FOR PRELIMINARY REVIEW ONLY

RECEPTION NO. 720385
PARCEL NO.
2123-304-00-003

GARFIELD SCHOOL DISTRICT RE-2
RECEPTION NO. 493428
PARCEL NO. 2123-304-00-001



STORM SEWER LEGEND	
EXISTING MINOR CONTOURS	--- 681 ---
EXISTING MAJOR CONTOURS	--- 680 ---
MINOR CONTOURS	--- 681 ---
MAJOR CONTOURS	--- 680 ---
STORM PIPE	---
HIGH POINT	▲
CURB INLET	■
GRATE INLET	■
STORM MANHOLE	○
STORM CLEANOUT	○
JUNCTION BOX	□
SANITARY SEWER MANHOLE	○
SANITARY SEWER CLEANOUT	○
SANITARY SEWER DOUBLE CLEANOUT	○
SANITARY SEWER SAMPLE PORT	○
GREASE TRAP	■
DOMESTIC WATER METER	■
IRRIGATION METER	■
GAS METER	■
TRANSFORMER	⊕
LIGHT POLE	⊕
POWER POLE	⊕

NOTE:
REFER TO DRAINAGE REPORT PREPARED BY "TRIANGLE ENGINEERING" DATED AUGUST 2025 FOR MORE DETAIL REGARDING DRAINAGE AND STORM DESIGN.

CURB AND GUTTER SIZING CALCULATIONS?
DRAIN INLET CALCULATIONS?
STORM DRAIN CALCULATIONS?

SEE SHEET C-1.1 FOR TOWN OF NEW CASTLE GENERAL NOTES.

OVERALL STORM PLAN
ARCHWOOD TOWNHOMES
CASTLE VALLEY BLVD
67 RESIDENTIAL LOTS & 7 OPEN AREAS
TOWN OF NEW CASTLE
GARFIELD COUNTY, COLORADO 81647



1777A PRESTON RD
SUITE 205
DALLAS, TEXAS 75252
OFFICE: (214) 454-7255
P.E. DES. DATE SCALE PROJECT NO. SHEET NO.
RY SS 08/25/25 SCALE 8'x11" 38-25 C-6.2
TEXAS ENGINEERING FIRM # F-20397

NO.	DATE	DESCRIPTION	BY
1	08/25/25	1ST PRELIMINARY PUD SUBMITTAL	RY
.	.	.	.
.	.	.	.
.	.	.	.
.	.	.	.
.	.	.	.

FOR PRELIMINARY REVIEW ONLY



OPEN SPACE 2
CASTLE VALLEY RANCH
FILING 9, BLOCK PA12
RECEPTION NO. 733785
PARCEL NO.
2123-304-54-101

15' NEW SANITARY SEWER EXHUMPT
RECEPTION NO. 1006
PARCEL NO. 1006
EASEMENT AGREEMENT
RECEPTION NO. 77398
BOOK 1915 PAGE 975

TC MIDWEST LLC
RECEPTION NO. 733781
PARCEL NO.
2123-293-00-197

CRY SUBDIVISION EXHA
RECEPTION NO. 1006
PARCEL NO.
2123-322-00-116

INSTALL INLET AT PRC TO PICK UP SNOWMELT DISCHARGE FLOWS TO AVOID ICING ON SILVERADO IN WINTER DUE TO LARGE TRIBUTARY DRAINAGE BASIN ABOVE.

MODIFY LAYOUT SO THAT LATERALS DUMP INTO ACCESSIBLE MANHOLE FOR MAINTENANCE

NEED MANHOLES AT CHANGE IN DIRECTION FOR BOTH STORM SEWER AND SANITARY SEWER

NEEDS TO BE 10' OF HORIZONTAL SEPARATION BETWEEN SPORI MANHOLE AND WATER PIPE

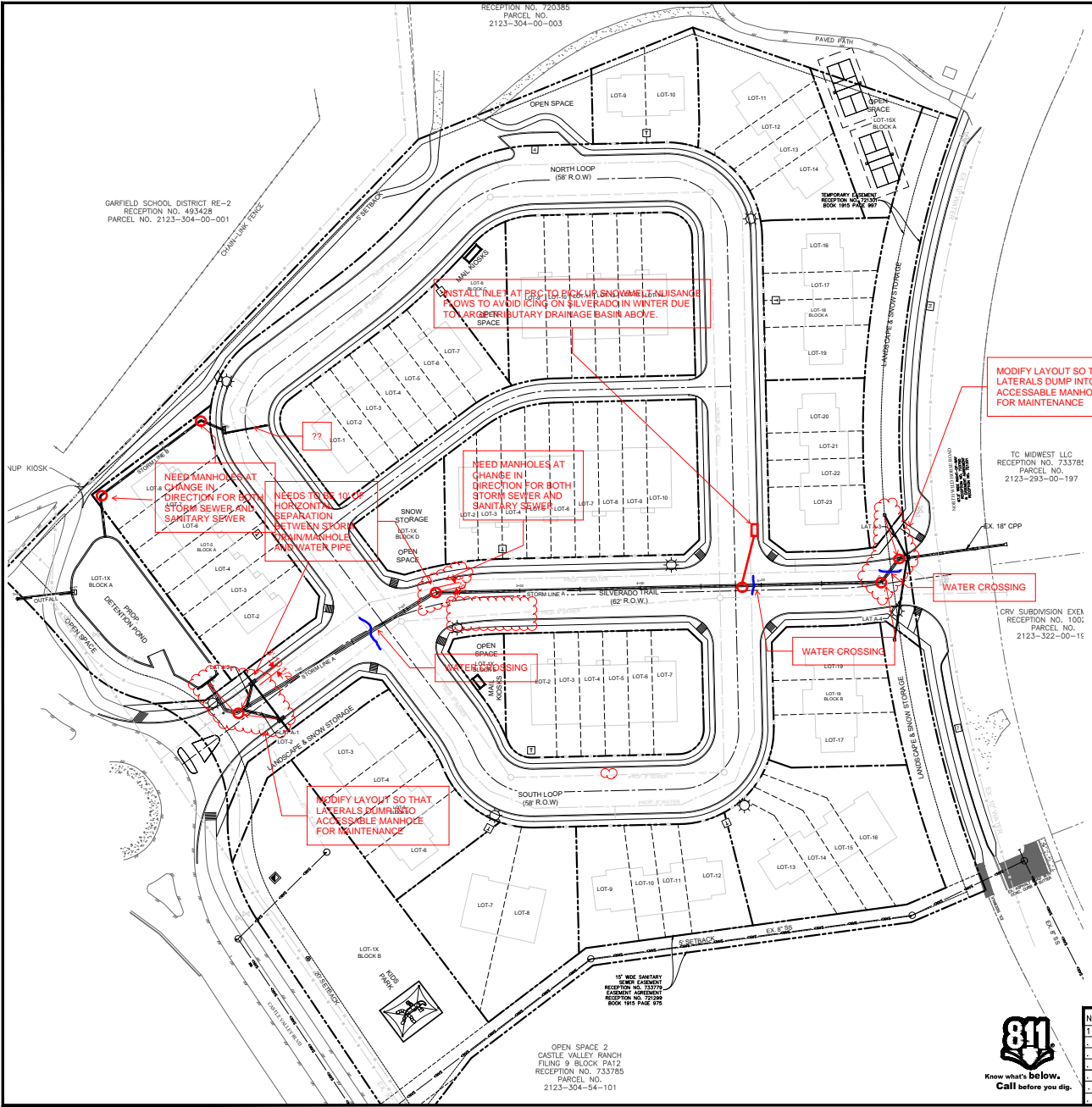
NEED MANHOLES AT CHANGE IN DIRECTION FOR BOTH STORM SEWER AND SANITARY SEWER

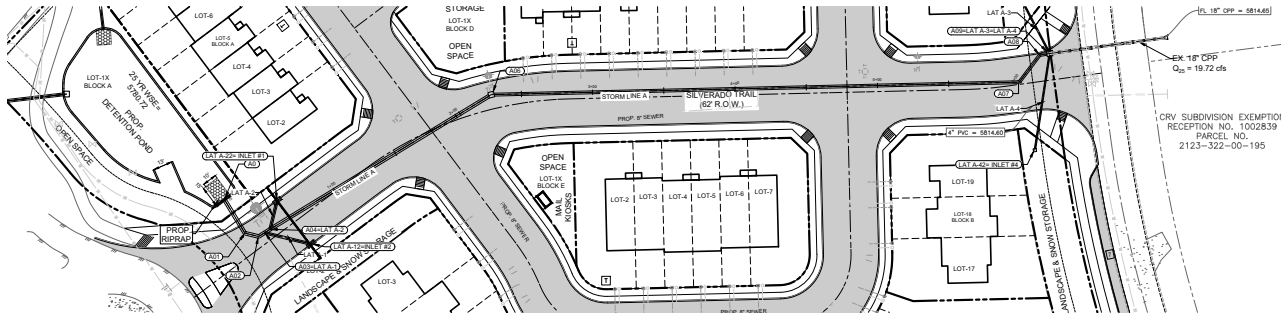
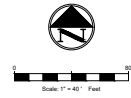
MODIFY LAYOUT SO THAT LATERALS DUMP INTO ACCESSIBLE MANHOLE FOR MAINTENANCE

WATER CROSSING

WATER CROSSING

WATER CROSSING

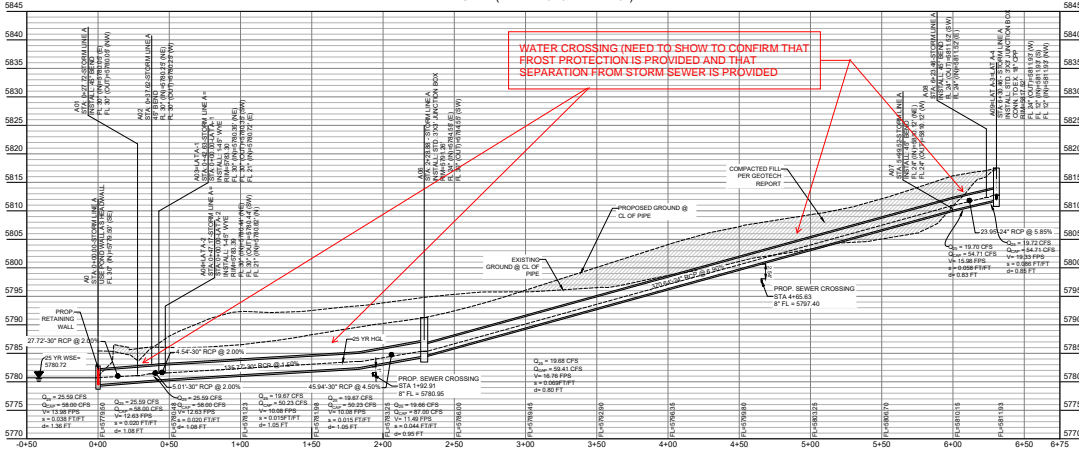




CRV SUBDIVISION EXEMPTION
RECEPTION NO. 1002839
PARCEL NO.
2123-322-00-195

STORM SEWER LEGEND	
EXISTING MINOR CONTOURS	--- 681 ---
EXISTING MAJOR CONTOURS	--- 681 ---
MINOR CONTOURS	--- 680 ---
MAJOR CONTOURS	--- 680 ---
STORM PIPE	---
HIGH POINT	▲
CURB INLET	■
GRATE INLET	□
STORM MANHOLE	○
STORM CLEANOUT	●
JUNCTION BOX	⊕
SANITARY SEWER MANHOLE	⊙
SANITARY SEWER CLEANOUT	⦿
SANITARY SEWER DOUBLE CLEANOUT	⦿
SANITARY SEWER SAMPLE PORT	⦿
GREASE TRAP	⊞
DOMESTIC WATER METER	⊞
IRRIGATION METER	⊞
GAS METER	⊞
TRANSFORMER	⊞
LIGHT POLE	⊞
POWER POLE	⊞

STORM LINE A PROFILE
SCALE (H: 1" = 40" & V: 1" = 10')



STORM STRUCTURE TABLE	
STRUCTURE NAME	STRUCTURE DETAILS
A0	STORM LINE A USE POND WALL AS HEADWALL STATION=40+00 RIMFG = 5782.792 30" INV IN = 5795.500
A01	STORM LINE A 45° BEND STATION=42+72 RIMFG = 5783.000 30" INV IN = 5780.054 30" INV OUT = 5780.054
A02	STORM LINE A 45° BEND STATION=43+82 RIMFG = 5783.198 30" INV IN = 5780.252 30" INV OUT = 5780.252
A03=LAT A-1	STORM LINE A 45° WYE STATION=42+83 RIMFG = 5783.300 30" INV IN = 5780.353 30" INV OUT = 5780.353
A04=LAT A-2	STORM LINE A 45° WYE STATION=47+17 RIMFG = 5783.490 30" INV IN = 5780.855 30" INV OUT = 5780.443

STORM STRUCTURE TABLE	
STRUCTURE NAME	STRUCTURE DETAILS
A05	??? NULL STRUCTURE STATION=???
A06	STORM LINE A STD. 3'X3' JUNCTION BOX STATION=42+88 RIMFG = 5791.262 24" INV IN = 5784.547 30" INV OUT = 5784.547
A07	STORM LINE A 45° BEND STATION=49+52 RIMFG = 5812.496 24" INV IN = 5810.121 24" INV OUT = 5810.121
A08	??? BEND STATION=???
A09=LAT A-3=LAT A-4	STORM LINE A STD. 3'X3' JUNCTION BOX CONN. TO EX. 18" C/P STATION=30+46 RIMFG = 5817.516 12" INV IN = 5811.930 12" INV IN = 5811.930 24" INV OUT = 5811.933

STORM STRUCTURE TABLE	
STRUCTURE NAME	STRUCTURE DETAILS
LAT A-12=INLET #2	LAT A-1 STD. TWO GRATE INLET STATION=33+58 RIMFG = 5785.746 21" INV OUT = 5782.470
LAT A-22=INLET #1	LAT A-2 STD. TWO GRATE INLET STATION=20+57 RIMFG = 5785.741 21" INV OUT = 5781.000
LAT A-32=INLET #5	LAT A-3 18" NYLOPLAST DRAIN STATION=30+38 RIMFG = 5815.250 12" INV OUT = 5812.330
LAT A-42=INLET #4	LAT A-4 18" NYLOPLAST DRAIN STATION=48+59 RIMFG = 5814.902 12" INV OUT = 5812.444

SEE SHEET C-1.1 FOR TOWN OF
NEW CASTLE GENERAL NOTES.

!! WARNING !!
EXISTING UTILITIES IN THE AREA. CONTRACTOR SHALL FIELD VERIFY THE LOCATION OF ALL EXISTING UTILITIES WITH THE PROVIDER PRIOR TO START OF CONSTRUCTION AND SHALL IMMEDIATELY NOTIFY THE ENGINEER OF ANY CONFLICTS DISCOVERED. CONTRACTOR IS RESPONSIBLE FOR COORDINATING UTILITY RELOCATION WHERE NECESSARY AND PROTECTING EXISTING UTILITIES (SHOWN OR NOT SHOWN). IF ANY EXISTING UTILITIES ARE DAMAGED, THE CONTRACTOR SHALL REPLACE THEM AT THEIR OWN EXPENSE.



NO.	DATE	DESCRIPTION	BY	RY
1	08/25/25	1ST PRELIMINARY PUD SUBMITTAL		
.
.
.
.
.

FOR PRELIMINARY
REVIEW ONLY

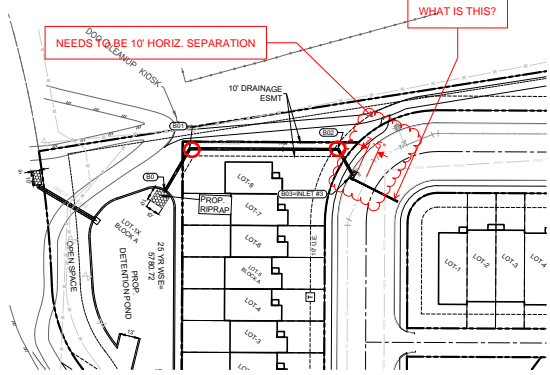
STORM LINE-A PLAN &
ARCHWOOD TOWNHOMES
CASTLE VALLEY BLVD
67 RESIDENTIAL LOTS & 7 OPEN AREAS
TOWN OF NEW CASTLE
GARFIELD COUNTY, COLORADO 81647



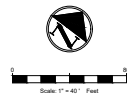
17774 PRESTON RD
SUITE 205
DALLAS, TEXAS 75252
OFFICE: (214) 454-7255

P.E.	DES.	DATE	SCALE	PROJECT NO.	SHEET NO.
RY	SS	08/25/25	SCALE 8/11	38-25	C-6.3

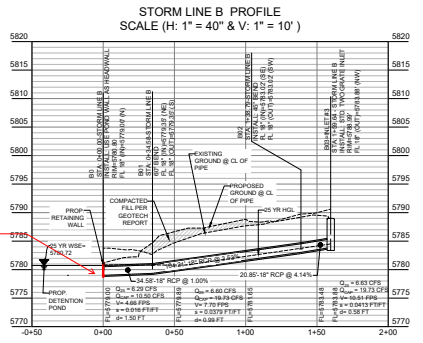
TEXAS ENGINEERING FIRM # F-20397



STORM STRUCTURE TABLE	
STRUCTURE NAME	STRUCTURE DETAILS
B0	STORM LINE B USE POND WALL AS HEADWALL STATION 0+00.00 RIMFG = 5780.804 18" INV IN = 5779.000
B01	STORM LINE B 90° BEND STATION 0+34.58 RIMFG = 5781.150 18" INV IN = 5779.346 18" INV OUT = 5779.346
B02	STORM LINE B 45° BEND STATION 1+38.79 RIMFG = 5784.824 18" INV IN = 5783.020 18" INV OUT = 5783.020
B03-INLET #3	STORM LINE B STD. TWO GRATE INLET STATION 1+59.84 RIMFG = 5788.987 18" INV OUT = 5783.832



STORM SEWER LEGEND	
EXISTING MINOR CONTOURS	----- 681 -----
EXISTING MAJOR CONTOURS	----- 680 -----
MINOR CONTOURS	----- 681 -----
MAJOR CONTOURS	----- 680 -----
STORM PIPE	----- 18" -----
HIGH POINT	----- 18" -----
CURB INLET	■
GRATE INLET	■
STORM MANHOLE	●
STORM CLEANOUT	●
JUNCTION BOX	□
SANITARY SEWER MANHOLE	○
SANITARY SEWER CLEANOUT	○
SANITARY SEWER DOUBLE CLEANOUT	○
SANITARY SEWER SAMPLE PORT	○
GREASE TRAP	□
DOMESTIC WATER METER	■
IRRIGATION METER	■
GAS METER	■
TRANSFORMER	□
LIGHT POLE	■
POWER POLE	■



EROSION CONTROL AT OUTLET?

SEE SHEET C-1.1 FOR TOWN OF NEW CASTLE GENERAL NOTES.

!! WARNING !!
 EXISTING UTILITIES IN THE AREA. CONTRACTOR SHALL FIELD VERIFY THE LOCATION OF ALL EXISTING UTILITIES WITH THE PROVIDER PRIOR TO START OF CONSTRUCTION AND SHALL IMMEDIATELY NOTIFY THE ENGINEER OF ANY CONFLICTS DISCOVERED. CONTRACTOR IS RESPONSIBLE FOR COORDINATING UTILITY RELOCATION WHERE NECESSARY AND PROTECTING EXISTING UTILITIES (SHOWN OR NOT SHOWN). IF ANY EXISTING UTILITIES ARE DAMAGED, THE CONTRACTOR SHALL REPLACE THEM AT THEIR OWN EXPENSE.



NO.	DATE	DESCRIPTION	BY
1	08/25/25	1ST PRELIMINARY PUD SUBMITTAL	RY
.	.	.	.
.	.	.	.
.	.	.	.
.	.	.	.
.	.	.	.

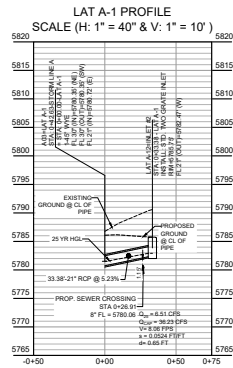
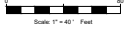
FOR PRELIMINARY REVIEW ONLY

STORM LINE-B PLAN & PROFILE
ARCHWOOD TOWNHOMES
 CASTLE VALLEY BLVD
 67 RESIDENTIAL LOTS & 7 OPEN AREAS
 TOWN OF NEW CASTLE
 GARFIELD COUNTY, COLORADO 81647

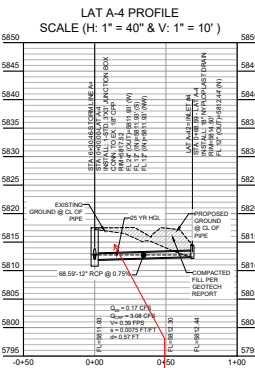
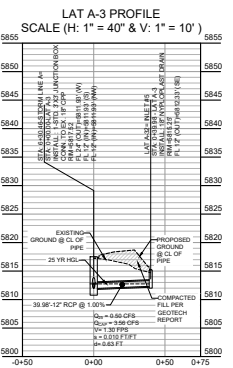
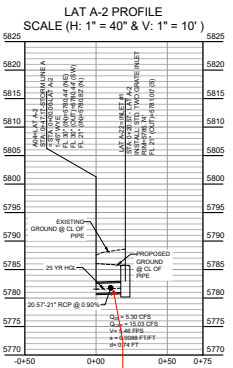
1774 PRESTON RD
 SUITE 201
 DALLAS, TEXAS 75252
 OFFICE: (214) 454-7255

P.E.	DES.	DATE	SCALE	PROJECT NO.	SHEET NO.
RY	SS	08/25/25	SCALE 8/11	38-25	C-6.4

TEXAS ENGINEERING FIRM # F-20397



SHOW WATER LINE LOCATION - LIKELY CONFLICT OR FROST AND SEPARATION ISSUE



SHOW WATER LINE LOCATION - LIKELY CONFLICT OR FROST AND SEPARATION ISSUE

SEE SHEET C-1.1 FOR TOWN OF NEW CASTLE GENERAL NOTES.

!! WARNING !!
EXISTING UTILITIES IN THE AREA. CONTRACTOR SHALL FIELD VERIFY THE LOCATION OF ALL EXISTING UTILITIES WITH THE PROVIDER PRIOR TO START OF CONSTRUCTION AND SHALL IMMEDIATELY NOTIFY THE ENGINEER OF ANY CONFLICTS DISCOVERED. CONTRACTOR IS RESPONSIBLE FOR COORDINATING UTILITY RELOCATION WHERE NECESSARY AND PROTECTING EXISTING UTILITIES (SHOWN OR NOT SHOWN). IF ANY EXISTING UTILITIES ARE DAMAGED, THE CONTRACTOR SHALL REPLACE THEM AT THEIR OWN EXPENSE.



NO.	DATE	DESCRIPTION	BY
1	08/25/25	1ST PRELIMINARY PUD SUBMITTAL	RY
.	.	.	.
.	.	.	.
.	.	.	.
.	.	.	.
.	.	.	.

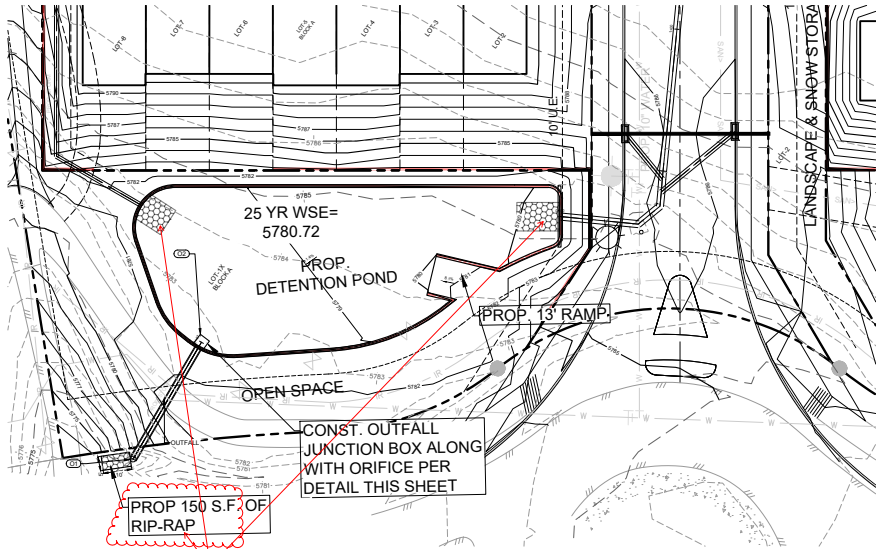
FOR PRELIMINARY REVIEW ONLY

STORM LATERAL PROFILE
ARCHWOOD TOWNHOMES
CASTLE VALLEY BLVD
67 RESIDENTIAL LOTS & 7 OPEN AREAS
TOWN OF NEW CASTLE
GARFIELD COUNTY, COLORADO 81647



1774 PRESTON RD
SUITE 205
DALLAS, TEXAS 75252
OFFICE: (214) 454-7255

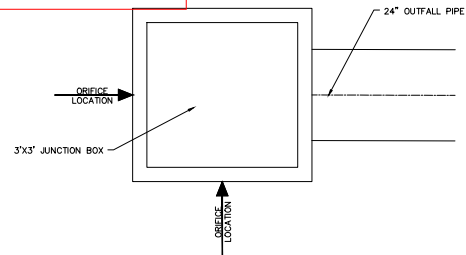
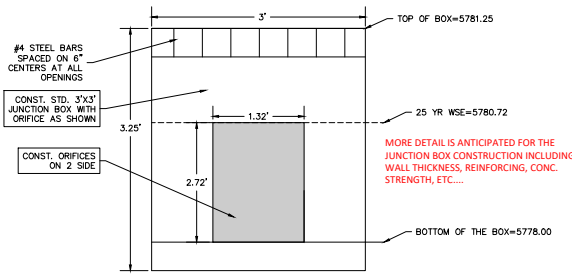
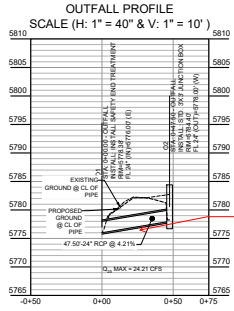
P.E.	DES.	DATE	SCALE	PROJECT NO.	SHEET NO.
RY	SS	08/25/25	SCALE 8x11	38-25	C-6.5



STORM STRUCTURE TABLE	
STRUCTURE NAME	STRUCTURE DETAILS
O1	OUTFALL INSTALL SAFETY END TREATMENT STATION 0+00.00 RMFG = 5779.375 24" INV IN = 5776.000
O2	OUTFALL STD. 3'X3' JUNCTION BOX STATION 0+47.50 RMFG = 5784.400 24" INV OUT = 5778.000

Detention Pond Volume Summary				
Year Event	Volume (CF)	Volume (CY)	Volume (CY)	Elevation
	REQUIRED	REQUIRED	PROVIDED	
25yrs	10,282	361	365	5780.72

STORM SEWER LEGEND	
EXISTING MINOR CONTOURS	--- 681 ---
EXISTING MAJOR CONTOURS	--- 680 ---
MINOR CONTOURS	--- 681 ---
MAJOR CONTOURS	--- 680 ---
STORM PIPE	--- 680 ---
HIGH POINT	▲
CURB INLET	■
GRATE INLET	■
STORM MANHOLE	○
STORM CLEANOUT	○
JUNCTION BOX	□
SANITARY SEWER MANHOLE	○
SANITARY SEWER CLEANOUT	○
SANITARY SEWER DOUBLE CLEANOUT	○
SANITARY SEWER SAMPLE PORT	○
GREASE TRAP	■
DOMESTIC WATER METER	■
IRRIGATION METER	■
GAS METER	■
TRANSFORMER	⊕
LIGHT POLE	⊕
POWER POLE	⊕



!! WARNING !!
 EXISTING UTILITIES IN THE AREA. CONTRACTOR SHALL FIELD VERIFY THE LOCATION OF ALL EXISTING UTILITIES WITH THE PROVIDER PRIOR TO START OF CONSTRUCTION AND SHALL IMMEDIATELY NOTIFY THE ENGINEER IF ANY CONFLICTS ARE DISCOVERED. CONTRACTOR IS RESPONSIBLE FOR COORDINATING UTILITY RELOCATION WHERE NECESSARY AND PROTECTING EXISTING UTILITIES (SHOWN OR NOT SHOWN). IF ANY EXISTING UTILITIES ARE DAMAGED, THE CONTRACTOR SHALL REPLACE THEM AT THEIR OWN EXPENSE.



NO.	DATE	DESCRIPTION	BY
1	08/25/25	1ST PRELIMINARY PUD SUBMITTAL	RY
.	.	.	.
.	.	.	.
.	.	.	.
.	.	.	.
.	.	.	.
.	.	.	.

FOR PRELIMINARY REVIEW ONLY

NOTE:
 ALL THE CALCULATION AND DESIGN IS DONE BASED ON DRAINAGE REPORT DONE BY "TRIANGLE ENGINEERING" FOR ARCHWOOD TOWNHOMES DATED AUGUST 2025.
 SEE SHEET C-1.1 FOR TOWN OF NEW CASTLE GENERAL NOTES.

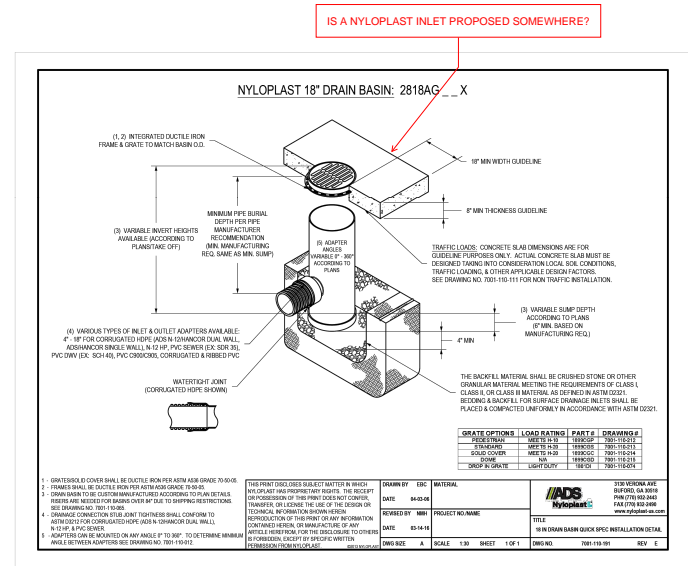
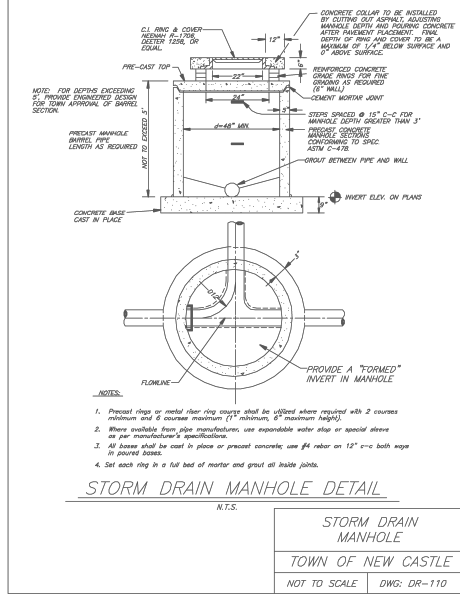
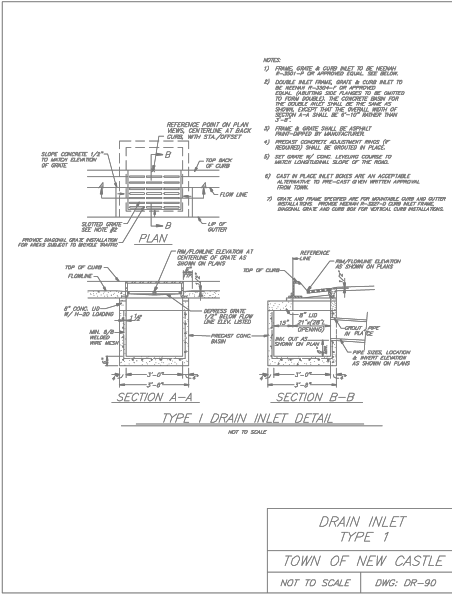
DETENTION POND PLAN
 ARCHWOOD TOWNHOMES
 CASTLE VALLEY BLVD
 67 RESIDENTIAL LOTS & 7 OPEN AREAS
 TOWN OF NEW CASTLE
 GARFIELD COUNTY, COLORADO 81647



1774 PRESTON RD
 SUITE 205
 DALLAS, TEXAS 75252
 OFFICE: (214) 454-7255

P.E.	DES.	DATE	SCALE	PROJECT NO.	SHEET NO.
RY	SS	08/25/25	SCALE 8/16	38-25	C-6.6

TEXAS ENGINEERING FIRM # F-20397



NO.	DATE	DESCRIPTION	BY	RY
1	08/25/25	1ST PRELIMINARY PUD SUBMITTAL		
.
.
.
.
.
.

FOR PRELIMINARY REVIEW ONLY

STORM DETAILS
ARCHWOOD TOWNHOMES
CASTLE VALLEY BLVD
67 RESIDENTIAL LOTS & 7 OPEN AREAS
TOWN OF NEW CASTLE
GARFIELD COUNTY, COLORADO 81647

1774 PRESTON RD
SUITE 205
DALLAS, TEXAS 75252
OFFICE: (214) 454-7255

P.E.	DES.	DATE	SCALE	PROJECT NO.	SHEET NO.
RY	SS	08/25/25	SCALE 8/8	38-25	C-6.7

TEXAS ENGINEERING FIRM # F-20397



UTILITY LEGEND	
UNDERGROUND TELEPHONE LINE	---
UNDERGROUND ELECTRIC LINE	---
GAS LINE	---
SANITARY SEWER LINE	---
WATER MAIN	---
DOMESTIC WATER LINE	---
STORM LINE	---
STORM SEWER MANHOLE	○
SANITARY SEWER MANHOLE	○
SANITARY SEWER CLEANOUT	○
SANITARY SEWER DOUBLE CLEANOUT	○
SANITARY SEWER SAMPLE PORT	○
GREASE TRAP	○
DOMESTIC WATER METER	○
IRRIGATION METER	○
GAS METER	○
FIRE HYDRANT	○
FIRE DEPARTMENT CONNECTION-FDC	○
TRANSFORMER	○
LIGHT POLE	○
POWER POLE	○

HORIZONTAL SEPARATION NEEDED BETWEEN MANHOLE AND WATERLINE

CONSIDER INSTALLING ARV AT HIGH POINT TO ASSURE PIPE DOES NOT COLLAPSE DUE TO NEGATIVE PRESSURES IN LOWER ZONE WATER BREAK

HORIZ. SETBACK FROM SEWER AND FROST PROTECTION ARE COMPROMISED

HORIZ. SETBACK FROM SEWER AND FROST PROTECTION ARE COMPROMISED

NOTE:
ALL PROPOSED UTILITY LINE CAPACITY AND IMPACT RELATED CALCULATION, REFER TO WATER AND WASTEWATER REPORT DONE BY WRIGHT WATER ENGINEERS, INC DATED AUGUST 2025.

SEE SHEET C-1.1 FOR TOWN OF NEW CASTLE GENERAL NOTES.

!! WARNING !!
EXISTING UTILITIES IN THE AREA. CONTRACTOR SHALL FIELD VERIFY THE LOCATION OF ALL EXISTING UTILITIES WITH THE PROVIDER PRIOR TO START OF CONSTRUCTION AND SHALL IMMEDIATELY NOTIFY THE ENGINEER OF ANY CONFLICTS. ENGINEER/CONTRACTOR IS RESPONSIBLE FOR COORDINATING UTILITY RELOCATION WHERE NECESSARY AND PROTECTING EXISTING UTILITIES (SHOWN OR NOT SHOWN). IF ANY EXISTING UTILITIES ARE DAMAGED, THE CONTRACTOR SHALL REPLACE THEM AT THEIR OWN EXPENSE.

WATER PLAN
ARCHWOOD TOWNHOMES
CASTLE VALLEY BLVD
67 RESIDENTIAL LOTS & 7 OPEN AREAS
TOWN OF NEW CASTLE
GARFIELD COUNTY, COLORADO 81647



1774 RUSTEN RD
SUITE 205
DALLAS, TEXAS 75252
OFFICE: (214) 454-7255

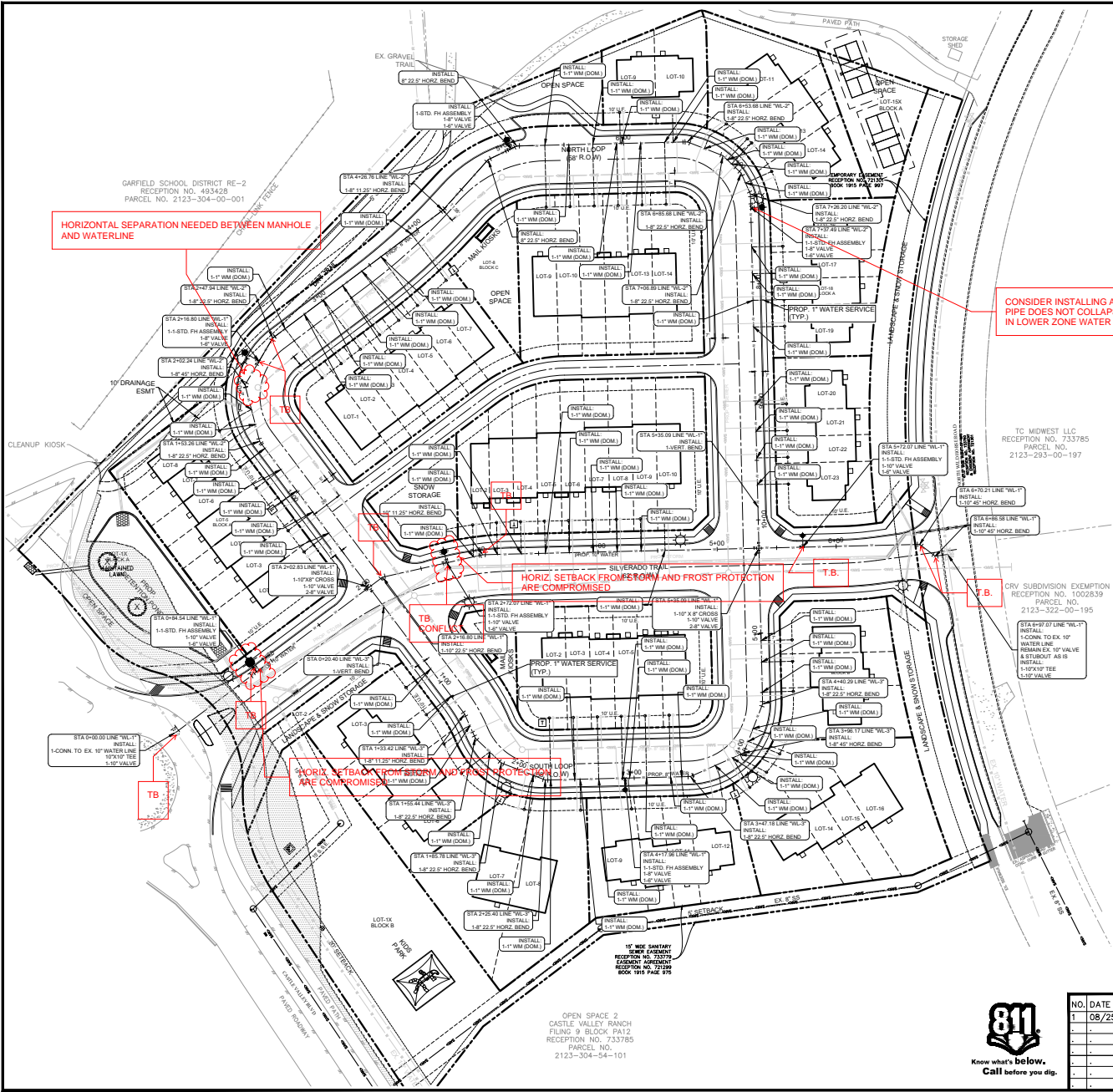
P.E. DES. DATE SCALE PROJECT NO. SHEET NO.
RY SS 08/25/25 SCALE 8"=1' 38-25 C-7.0
TEXAS ENGINEERING FIRM # F-20397

NO.	DATE	DESCRIPTION	BY
1	08/25/25	1ST PRELIMINARY PUD SUBMITTAL	RY
.	.	.	.
.	.	.	.
.	.	.	.
.	.	.	.
.	.	.	.
.	.	.	.
.	.	.	.
.	.	.	.
.	.	.	.

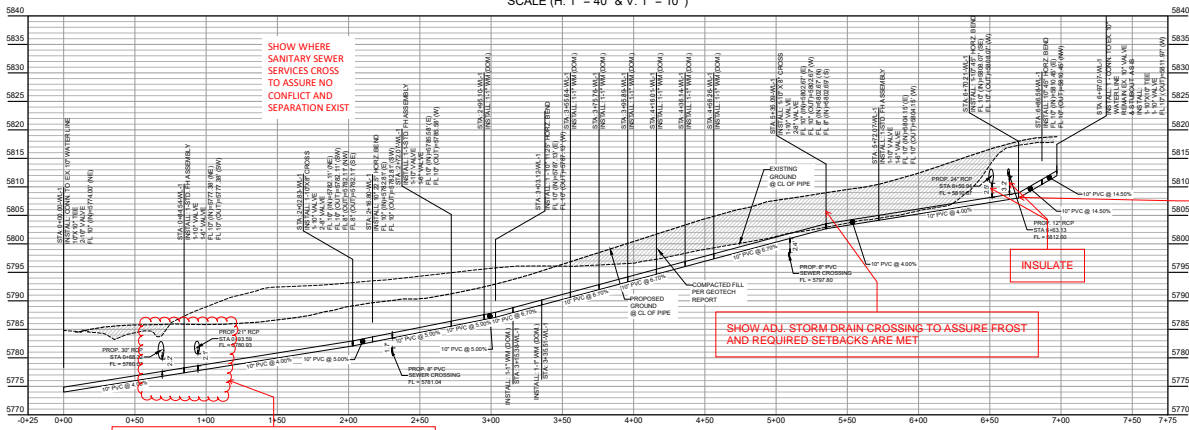
FOR PRELIMINARY REVIEW ONLY



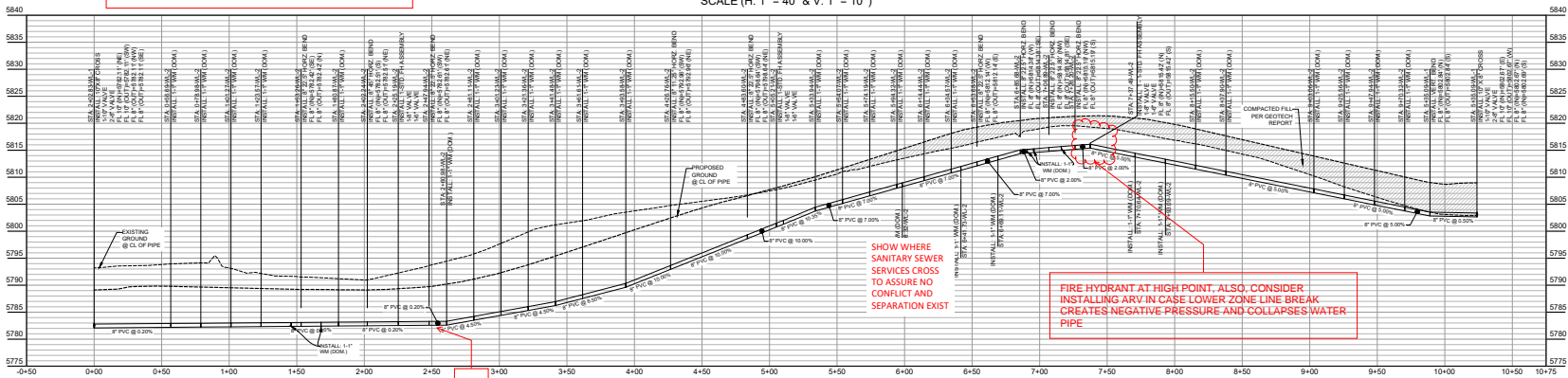
OPEN SPACE 2
CASTLE VALLEY RANCH
FLING 9 BLOCK PAT2
RECEPTION NO. 733785
PARCEL NO.
2123-304-54-101



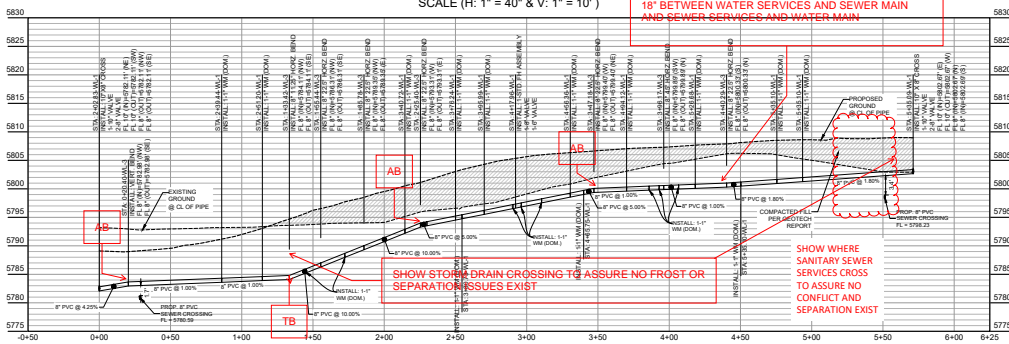
WL-1 PROFILE
SCALE (H: 1" = 40' & V: 1" = 10')



WL-2 PROFILE
SCALE (H: 1" = 40' & V: 1" = 10')



WL-3 PROFILE
SCALE (H: 1" = 40' & V: 1" = 10')



NOTE:
ALL PROPOSED UTILITY LINE CAPACITY AND IMPACT RELATED CALCULATION, REFER TO WATER AND WASTEWATER REPORT DONE BY WRIGHT WATER ENGINEERS, INC DATED AUGUST 2025.

SEE SHEET C-1.1 FOR TOWN OF NEW CASTLE GENERAL NOTES.

!! WARNING !!
EXISTING UTILITIES IN THE AREA. CONTRACTOR SHALL FIELD VERIFY THE LOCATION OF ALL EXISTING UTILITIES WITH THE PROVIDER PRIOR TO START OF CONSTRUCTION AND SHALL IMMEDIATELY NOTIFY THE ENGINEER OF ANY CONFLICTS. ENGINEER/CONTRACTOR IS RESPONSIBLE FOR COORDINATING UTILITY RELOCATION WHERE NECESSARY AND PROTECTING EXISTING UTILITIES (SHOWN OR NOT SHOWN). IF ANY EXISTING UTILITIES ARE DAMAGED, THE CONTRACTOR SHALL REPLACE THEM AT THEIR OWN EXPENSE.



NO.	DATE	DESCRIPTION	BY
1	08/25/25	1ST PRELIMINARY PUD SUBMITTAL	RY
.	.	.	.
.	.	.	.
.	.	.	.
.	.	.	.

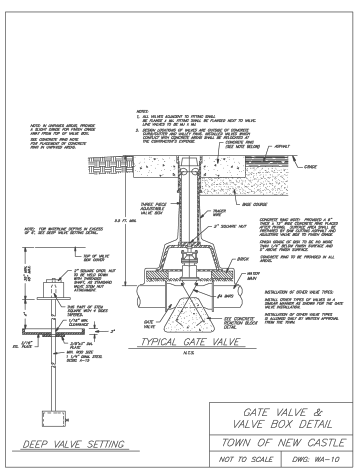
FOR PRELIMINARY REVIEW ONLY

WATER PROFILE
ARCHWOOD TOWNHOMES
CASTLE VALLEY BLVD
67 RESIDENTIAL LOTS & 7 OPEN AREAS
TOWN OF NEW CASTLE
GARFIELD COUNTY, COLORADO 81647

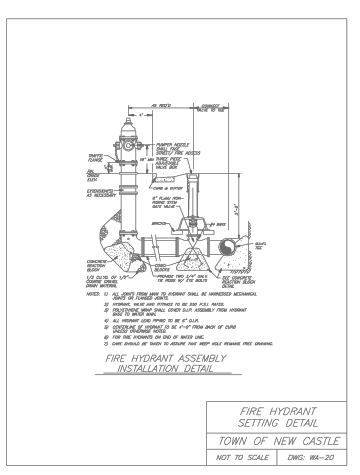
1774 PRESTON RD
SUITE 28
DALLAS, TEXAS 75252
OFFICE: (214) 454-7255

P.E. DES. DATE SCALE PROJECT NO. SHEET NO.
RY SS 08/25/25 SCALE 8'1" 38-25 C-7.1

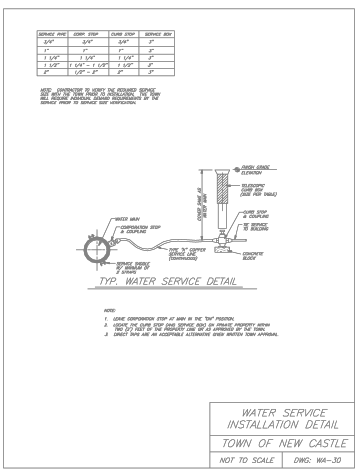
TEXAS ENGINEERING FIRM # F-20397



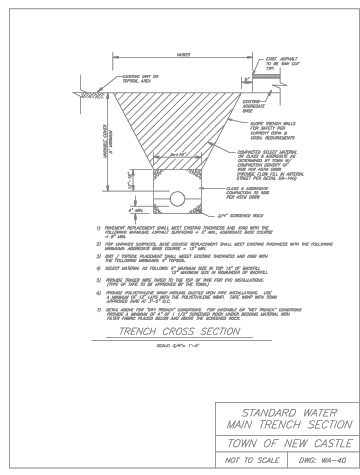
GATE VALVE & VALVE BOX DETAIL
TOWN OF NEW CASTLE
NOT TO SCALE DWG: WA-10



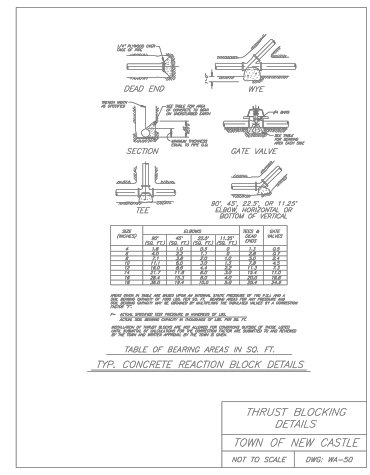
FIRE HYDRANT INSTALLATION DETAIL
TOWN OF NEW CASTLE
NOT TO SCALE DWG: WA-20



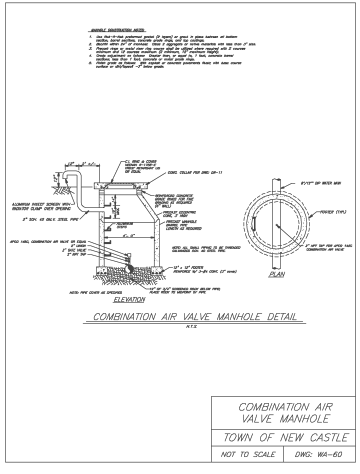
WATER SERVICE INSTALLATION DETAIL
TOWN OF NEW CASTLE
NOT TO SCALE DWG: WA-30



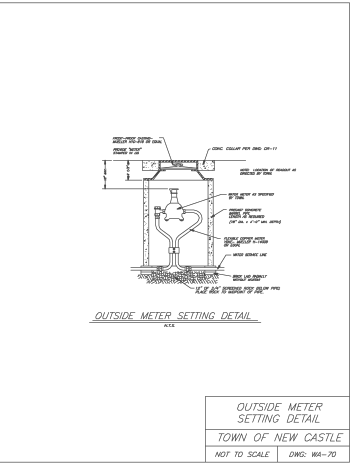
STANDARD WATER MAIN TRENCH SECTION
TOWN OF NEW CASTLE
NOT TO SCALE DWG: WA-40



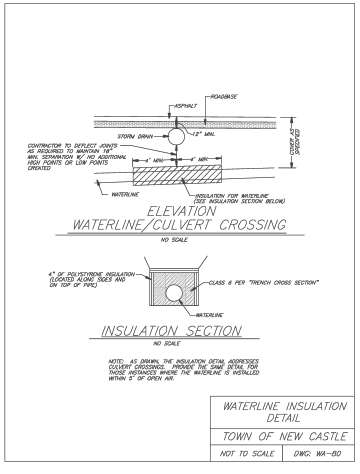
THRUST BLOCKING DETAILS
TOWN OF NEW CASTLE
NOT TO SCALE DWG: WA-50



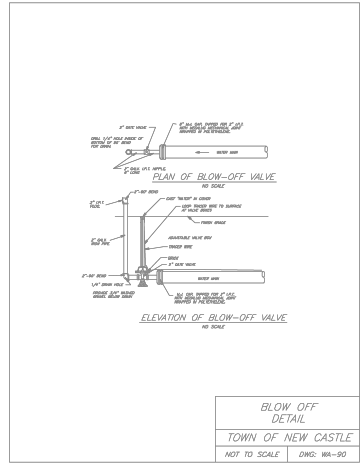
COMBINATION AIR VALVE MANHOLE
TOWN OF NEW CASTLE
NOT TO SCALE DWG: WA-60



OUTSIDE METER SETTING DETAIL
TOWN OF NEW CASTLE
NOT TO SCALE DWG: WA-70



WATERLINE INSULATION DETAIL
TOWN OF NEW CASTLE
NOT TO SCALE DWG: WA-80



BLOW OFF DETAIL
TOWN OF NEW CASTLE
NOT TO SCALE DWG: WA-90



NO.	DATE	DESCRIPTION	BY
1	08/25/25	1ST PRELIMINARY PUD SUBMITTAL	RY
.	.	.	.
.	.	.	.
.	.	.	.
.	.	.	.
.	.	.	.

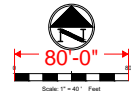
FOR PRELIMINARY REVIEW ONLY

WATER DETAILS
ARCHWOOD TOWNHOMES
 CASTLE VALLEY BLVD
 67 RESIDENTIAL LOTS & 7 OPEN AREAS
 TOWN OF NEW CASTLE
 GARFIELD COUNTY, COLORADO 81647

1774 PRESTON RD
 SUITE 208
 DALLAS, TEXAS 75252
 OFFICE: (214) 454-7255

P.E.	DES.	DATE	SCALE	PROJECT NO.	SHEET NO.
RY	SS	08/25/25	SCALE 8/16	38-25	C-7.2

TEXAS ENGINEERING FIRM # F-20397



UTILITY LEGEND	
UNDERGROUND TELEPHONE LINE	---
UNDERGROUND ELECTRIC LINE	---
GAS LINE	---
SANITARY SEWER LINE	---
WATER MAIN	---
DOMESTIC WATER LINE	---
STORM LINE	---
STORM SEWER MANHOLE	○
SANITARY SEWER CLEANOUT	○
SANITARY SEWER CLEANOUT	○
SANITARY SEWER DOUBLE CLEANOUT	○
SANITARY SEWER SAMPLE PORT	○
GREASE TRAP	○
DOMESTIC WATER METER	○
IRRIGATION METER	○
GAS METER	○
FIRE HYDRANT	○
FIRE DEPARTMENT CONNECTION-FDC	○
TRANSFORMER	○
LIGHT POLE	○
POWER POLE	○

OPPORTUNITY EXISTS TO INSTALL ANOTHER MANHOLE JUST UPSTREAM OF LOT19 SERVICE IN LINE OF EXTENDING PIPE TO STA 4+27.33

GARFIELD SCHOOL DISTRICT RE-2
RECEPTION NO. 493428
PARCEL NO. 2123-304-00-001

TC MIDWEST LLC
RECEPTION NO. 733785
PARCEL NO. 2123-293-00-197

CRY SUBDIVISION EXEMPTION
RECEPTION NO. 1008339
PARCEL NO. 2123-322-00-195

CASTLE FLING
RECEIPT #
2123-

NOTE:
ALL PROPOSED UTILITY LINE CAPACITY AND IMPACT RELATED CALCULATION, REFER TO WATER AND WASTEWATER REPORT DONE BY WRIGHT WATER ENGINEERS, INC DATED AUGUST 2025.

SEE SHEET C-1.1 FOR TOWN OF NEW CASTLE GENERAL NOTES.

!! WARNING !!
EXISTING UTILITIES IN THE AREA. CONTRACTOR SHALL FIELD VERIFY THE LOCATION OF ALL EXISTING UTILITIES WITH THE PROVIDER PRIOR TO START OF CONSTRUCTION AND SHALL IMMEDIATELY NOTIFY THE ENGINEER OF ANY CONFLICTS. ENGINEER/CONTRACTOR IS RESPONSIBLE FOR COORDINATING UTILITY RELOCATION WHERE NECESSARY AND PROTECTING EXISTING UTILITIES (SHOWN OR NOT SHOWN). IF ANY EXISTING UTILITIES ARE DAMAGED, THE CONTRACTOR SHALL REPLACE THEM AT THEIR OWN EXPENSE.

GC TO FIELD-VERIFY THE LOCATION OF THE EXISTING 8" STUB-OUT FOR THE PROPOSED CONNECTION.
IF THE STUB-OUT DOES NOT ALIGN WITH THE PROPOSED ALIGNMENT, REMOVE THE EXISTING STUB AND INSTALL A NEW ONE IN ACCORDANCE WITH THE DESIGN PLANS.
GROUND EX 8" STUB-OUT IF NOT REQUIRED FOR FUTURE USE (GC TO COORDINATE WITH CITY)

NOTE:
THE LOCATION OF THE EXISTING MANHOLE MUST BE FIELD-VERIFIED BY THE GC, BASED ON THE SURVEY AND AS-BUILTS. IF IT APPEARS TO BE A DRY WELL WITH FOUR PIPE CONNECTIONS, HOWEVER, SITE PHOTOS SUGGEST IT MAY ACTUALLY BE A MANHOLE. ONCE FIELD VERIFICATION IS COMPLETED, PLEASE UPDATE THE RECORD ENGINEER ACCORDINGLY.

OPEN SPACE 2
CASTLE VALLEY RANCH
FLING, 9, BLOCK, PA12
RECEPTION NO. 733785
PARCEL NO. 2123-304-54-101

15' NEW SANITARY SEWER EXEMPTION
RECEPTION NO. 101718
EASEMENT AGREEMENT
RECEPTION NO. 73798
BOOK 1915 PAGE 975

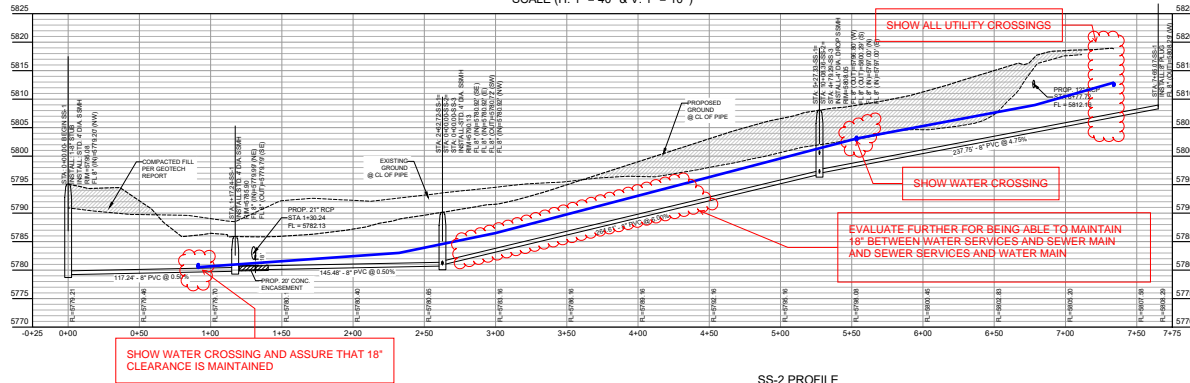


NO.	DATE	DESCRIPTION	BY
1	08/25/25	1ST PRELIMINARY PUD SUBMITTAL	RY

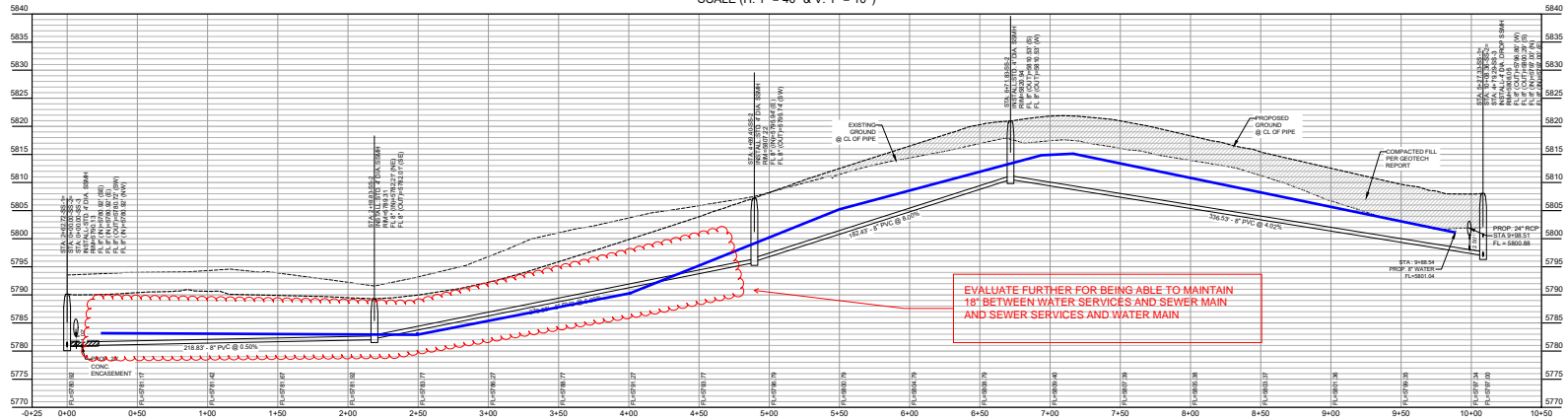
FOR PRELIMINARY REVIEW ONLY

SANITARY SEWER PLAN ARCHWOOD TOWNHOMES CASTLE VALLEY BLVD 67 RESIDENTIAL LOTS & 7 OPEN AREAS TOWN OF NEW CASTLE GARFIELD COUNTY, COLORADO 81647	
1774 PRESTON RD SUITE 205 DALLAS, TEXAS 75252 OFFICE: (214) 454-7255	
P.E.	DES. DATE SCALE PROJECT NO. SHEET NO.
RY	SS 08/25/25 SCALE 8/16 38-25 C-8.0
TEXAS ENGINEERING FIRM # F-20397	

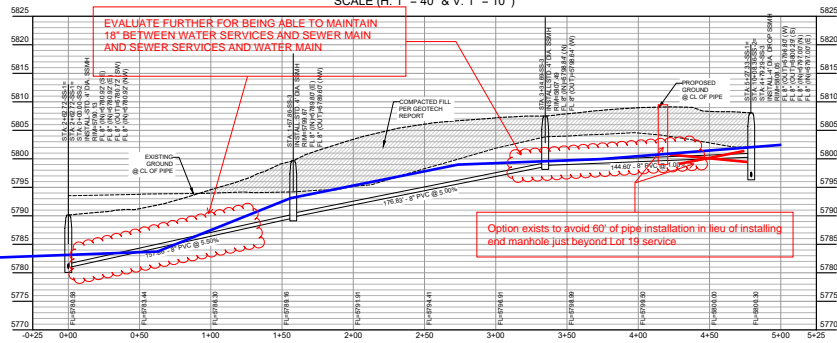
SS-1 PROFILE
SCALE (H: 1" = 40' & V: 1" = 10')



SS-2 PROFILE
SCALE (H: 1" = 40' & V: 1" = 10')



SS-3 PROFILE
SCALE (H: 1" = 40' & V: 1" = 10')



!! WARNING !!
EXISTING UTILITIES IN THE AREA. CONTRACTOR SHALL FIELD VERIFY THE LOCATION OF ALL EXISTING UTILITIES WITH THE PROVIDER PRIOR TO START OF CONSTRUCTION AND SHALL IMMEDIATELY NOTIFY THE ENGINEER OF ANY CONFLICTS OR CONCERNS. CONTRACTOR IS RESPONSIBLE FOR COORDINATING UTILITY RELOCATION WHERE NECESSARY AND PROTECTING EXISTING UTILITIES (SHOWN OR NOT SHOWN). IF ANY EXISTING UTILITIES ARE DAMAGED, THE CONTRACTOR SHALL REPLACE THEM AT THEIR OWN EXPENSE.

SEE SHEET C-1.1 FOR TOWN OF NEW CASTLE GENERAL NOTES.

SANITARY SEWER PROFILE
ARCHWOOD TOWNHOMES
CASTLE VALLEY BLVD
67 RESIDENTIAL LOTS & 7 OPEN AREAS
TOWN OF NEW CASTLE
GARFIELD COUNTY, COLORADO 81647



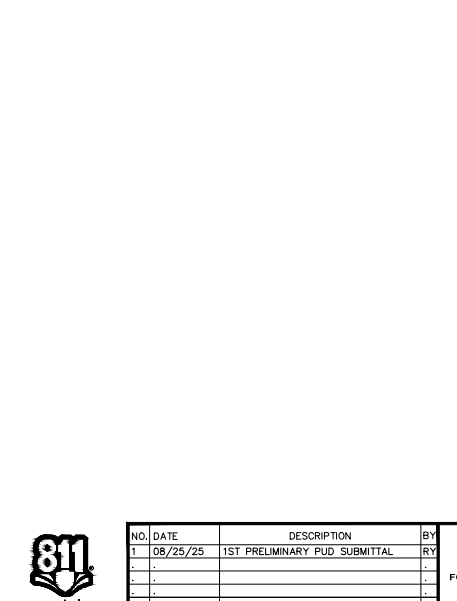
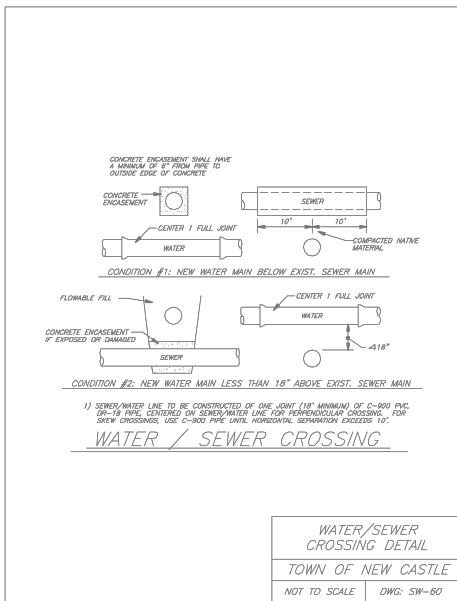
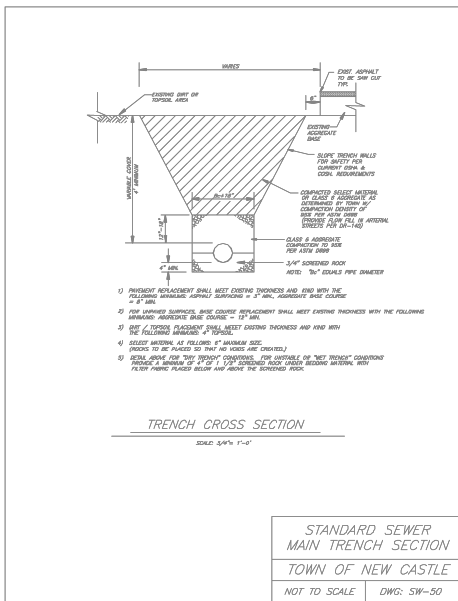
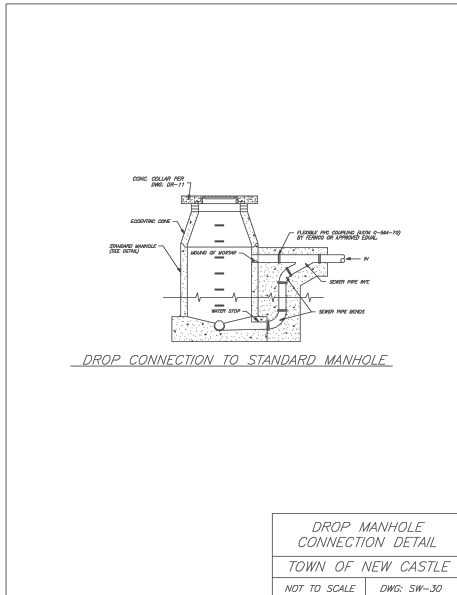
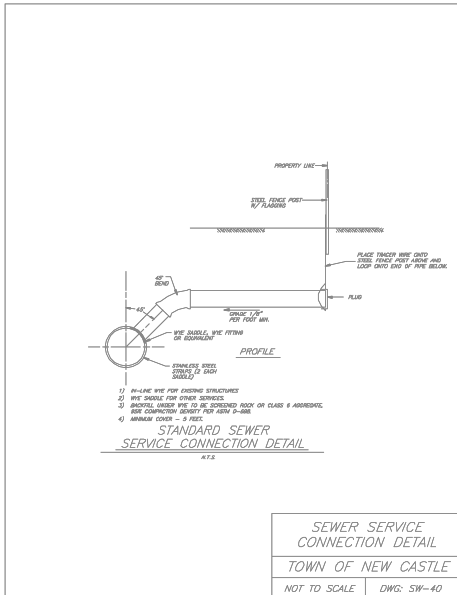
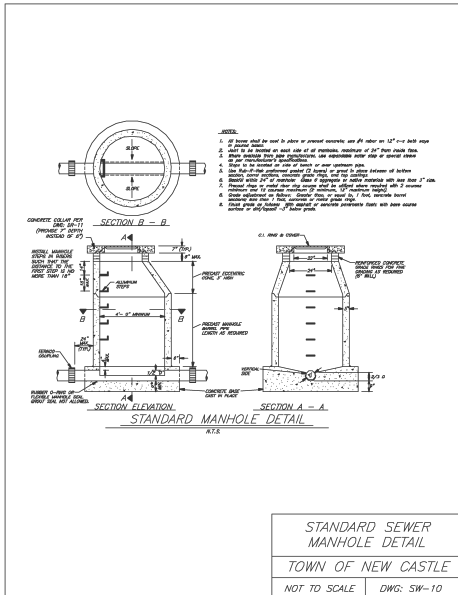
1774 PRESTON RD
SUITE 205
DALLAS, TEXAS 75252
OFFICE: (214) 454-7255



NO.	DATE	DESCRIPTION	BY
1	08/25/25	1ST PRELIMINARY PUD SUBMITTAL	RY
.	.	.	.
.	.	.	.
.	.	.	.
.	.	.	.
.	.	.	.

FOR PRELIMINARY REVIEW ONLY

P.E.	DES.	DATE	SCALE	PROJECT NO.	SHEET NO.
RY	SS	08/25/25	SCALE 8x4	38-25	C-8.1



SANITARY SEWER DETAILS
ARCHWOOD TOWNHOMES
CASTLE VALLEY BLVD
67 RESIDENTIAL LOTS & 7 OPEN AREAS
TOWN OF NEW CASTLE
GARFIELD COUNTY, COLORADO 81647

1774 PRESTON RD
SUITE 205
DALLAS, TEXAS 75252
OFFICE: (214) 454-7255

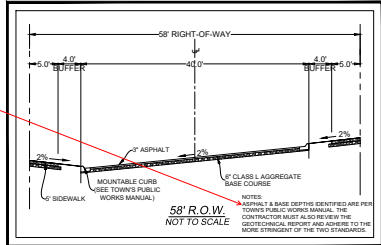
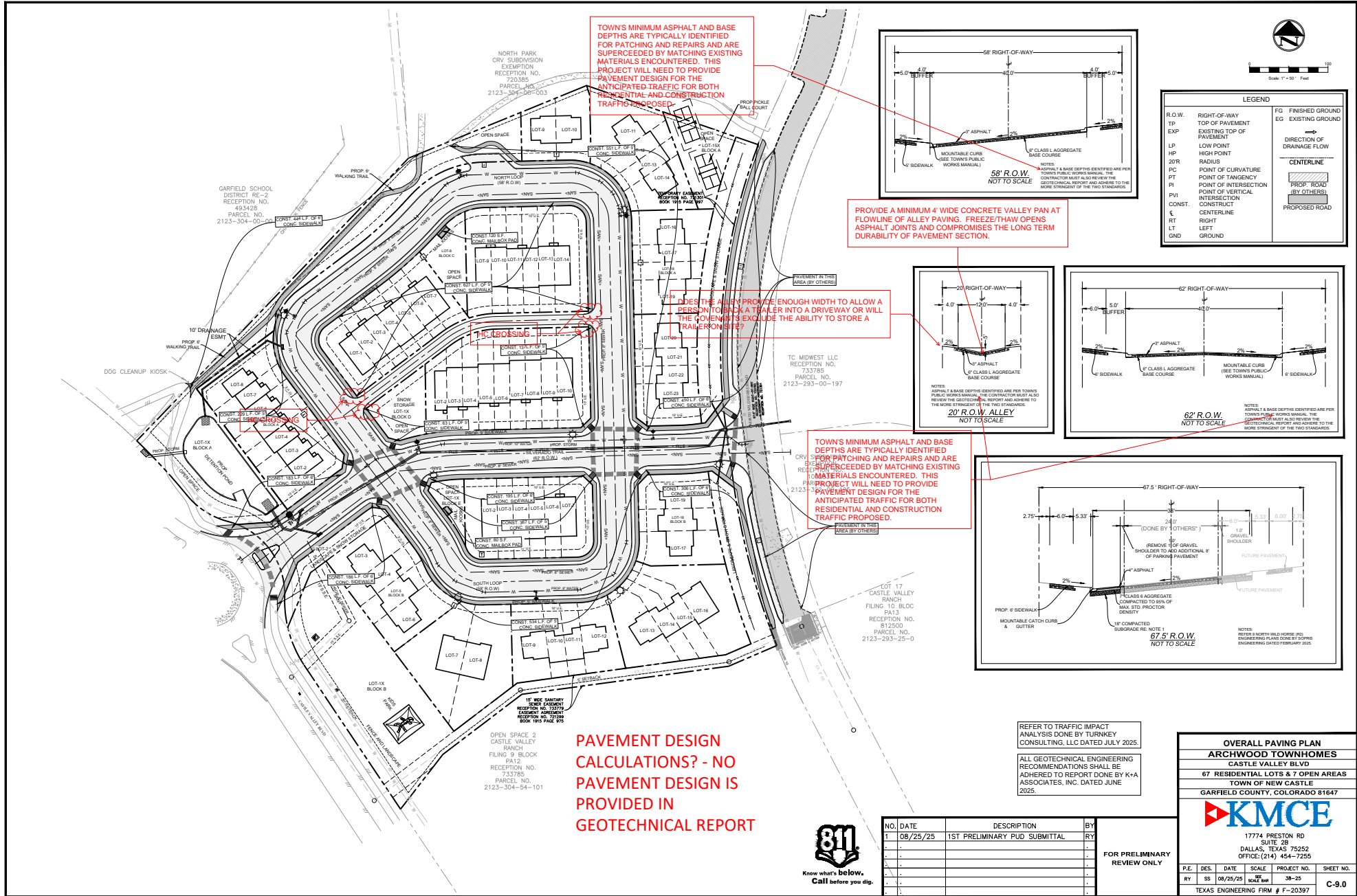
P.E.	DES.	DATE	SCALE	PROJECT NO.	SHEET NO.
RY	SS	08/25/25	SCALE 8/16	38-25	C-8.2

TEXAS ENGINEERING FIRM # F-20397

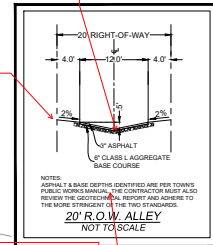


NO.	DATE	DESCRIPTION	BY
1	08/25/25	1ST PRELIMINARY PUD SUBMITTAL	RY
.	.	.	.
.	.	.	.
.	.	.	.
.	.	.	.
.	.	.	.

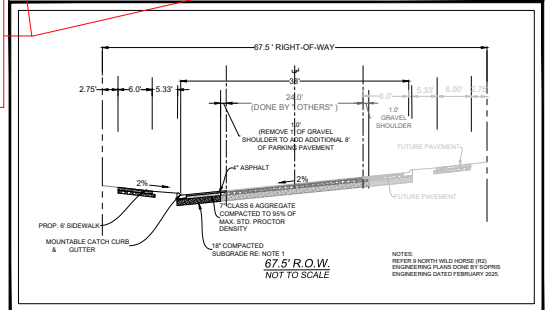
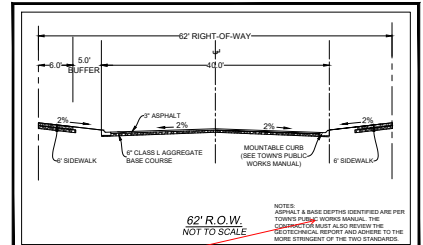
FOR PRELIMINARY REVIEW ONLY



PROVIDE A MINIMUM 4" WIDE CONCRETE VALLEY PAN AT FLOWLINE OF ALLEY PAVING. FREEZE/THAW OPENS ASPHALT JOINTS AND COMPROMISES THE LONG TERM DURABILITY OF PAVEMENT SECTION.



TOWN'S MINIMUM ASPHALT AND BASE DEPTHS ARE TYPICALLY IDENTIFIED FOR PATCHING AND REPAIRS AND ARE SUPERCEDED BY MATCHING EXISTING MATERIALS ENCOUNTERED. THIS PROJECT WILL NEED TO PROVIDE PAVEMENT DESIGN FOR THE ANTICIPATED TRAFFIC FOR BOTH RESIDENTIAL AND CONSTRUCTION TRAFFIC PROPOSED.



LEGEND

R.O.W.	RIGHT-OF-WAY	FG	FINISHED GROUND
TP	EXISTING TOP OF PAVEMENT	EG	EXISTING GROUND
EXP	EXISTING TOP OF PAVEMENT	→	DIRECTION OF DRAINAGE FLOW
LP	LOW POINT	— —	CENTERLINE
HP	HIGH POINT	— —	PROF. ROAD (BY OTHERS)
20R	RADIUS	— —	PROPOSED ROAD
PC	POINT OF CURVATURE		
PT	POINT OF TANGENCY		
PI	POINT OF INTERSECTION		
PVI	POINT OF VERTICAL INTERSECTION		
CONST.	CENTERLINE		
LT	LEFT		
RT	RIGHT		
LT	LEFT		
GND	GROUND		

REFER TO TRAFFIC IMPACT ANALYSIS DONE BY TURKEY CONSULTING, LLC DATED JULY 2025.

ALL GEOTECHNICAL ENGINEERING RECOMMENDATIONS SHALL BE ADHERED TO REPORT DONE BY K+A ASSOCIATES, INC. DATED JUNE 2025.

OVERALL PAVING PLAN
ARCHWOOD TOWNHOMES
 CASTLE VALLEY BLVD
 67 RESIDENTIAL LOTS & 7 OPEN AREAS
 TOWN OF NEW CASTLE
 GARFIELD COUNTY, COLORADO 81647



1777A REMSON RD
 SUITE 205
 DALLAS, TEXAS 75252
 OFFICE: (214) 454-7255

P.E. DES. DATE SCALE PROJECT NO. SHEET NO.
 RT SS 08/25/25 SCALE 8/8 38-25 C-9.0

TEXAS ENGINEERING FIRM # F-20397

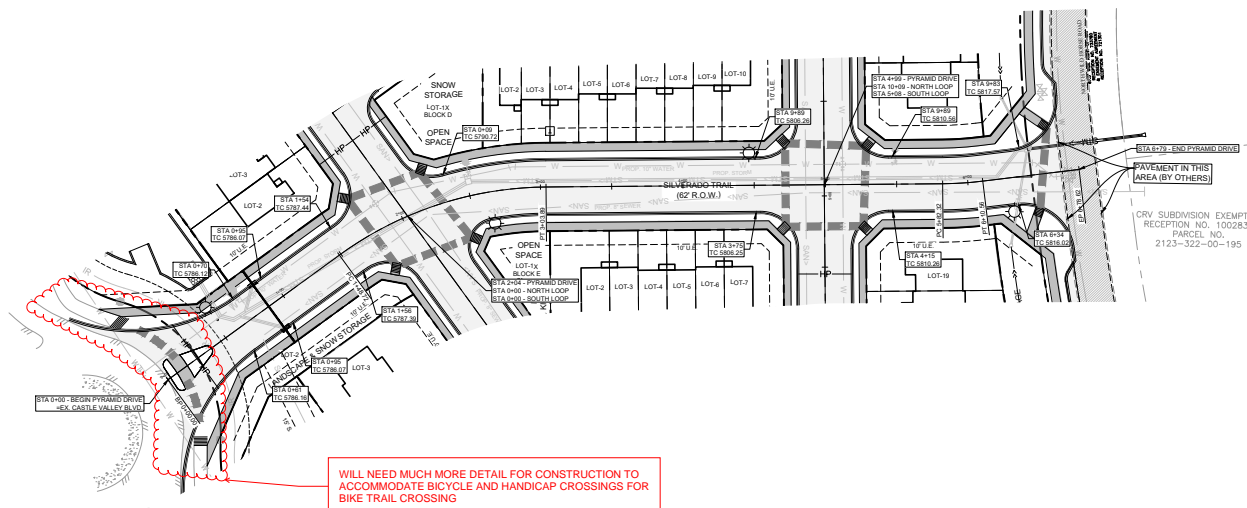
NO.	DATE	DESCRIPTION	BY
1	08/25/25	1ST PRELIMINARY PUD SUBMITTAL	RY
2			
3			
4			
5			
6			
7			

FOR PRELIMINARY REVIEW ONLY





Scale 1" = 40' Feet

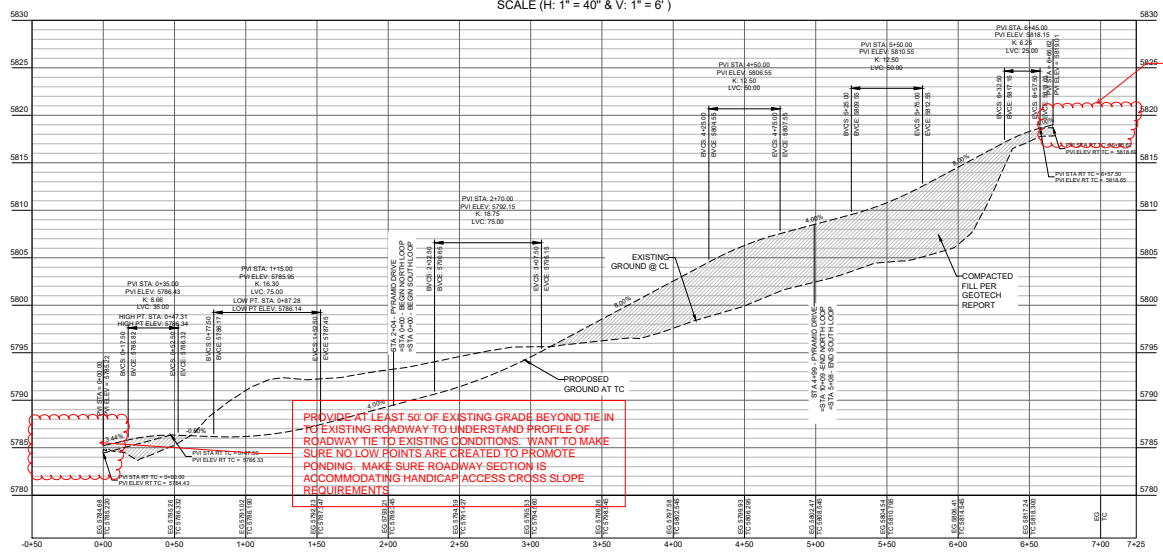


LEGEND

R.O.W.	RIGHT-OF-WAY	FG	FINISHED GROUND
TP	TOP OF PAVEMENT	EG	EXISTING GROUND
EXP	EXISTING TOP OF PAVEMENT		
LP	LOW POINT		DIRECTION OF DRAINAGE FLOW
HP	HIGH POINT		CENTERLINE
20R	RADIUS		
PC	POINT OF CURVATURE		
PT	POINT OF TANGENCY		
PI	POINT OF INTERSECTION		
PVI	POINT OF VERTICAL INTERSECTION		
CONST.	CONSTRUCT		
CL	CENTERLINE		
RT	RIGHT		
LT	LEFT		
GND	GROUND		

WILL NEED MUCH MORE DETAIL FOR CONSTRUCTION TO ACCOMMODATE BICYCLE AND HANDICAP CROSSINGS FOR BIKE TRAIL CROSSING

PYRAMID DRIVE PROFILE
SCALE (H: 1" = 40" & V: 1" = 6')



CARRY PROFILE OUT TO NORTH SIDE OF NORTH WILDHORSE DRIVE TO UNDERSTAND TIE TO EXISTING IMPROVEMENTS.

PROVIDE AT LEAST 50' OF EXISTING GRADE BEYOND TIE IN TO EXISTING ROADWAY TO UNDERSTAND PROFILE OF ROADWAY TIE TO EXISTING CONDITIONS. WANT TO MAKE SURE NO LOW POINTS ARE CREATED TO PROMOTE PENDING - MAKE SURE ROADWAY SECTION IS ACCOMMODATING HANDICAP ACCESS CROSS SLOPE REQUIREMENTS

WITH THE PROFILE BEING TOP OF CURB, BOTH CURB LINES AND CENTERLINE PROFILE WILL NEED TO BE PROVIDED TO UNDERSTAND THE FULL CHARACTER OF THE INTENDED DRAINAGE, TRANSITION CROSS SLOPES, LOW POINTS, HIGH POINTS, ETC...

REFER TO TRAFFIC IMPACT ANALYSIS DONE BY TURNKEY CONSULTING, LLC DATED JULY 2025.

ALL GEOTECHNICAL ENGINEERING RECOMMENDATIONS SHALL BE ADHERED TO REPORT DONE BY K+A ASSOCIATES, INC. DATED JUNE 2025.

NOTE: REFER TO SHEET C-9.0 FOR TYPICAL PAVEMENT DETAILS.

PAVING PLAN & PROFILE
ARCHWOOD TOWNHOMES
 CASTLE VALLEY BLVD
 67 RESIDENTIAL LOTS & 7 OPEN AREAS
 TOWN OF NEW CASTLE
 GARFIELD COUNTY, COLORADO 81647



1774 PRESTON RD
SUITE 205
DALLAS, TEXAS 75252
OFFICE: (214) 454-7255

P.E.	DES.	DATE	SCALE	PROJECT NO.	SHEET NO.
RY	SS	08/25/25	SCALE 8:11	38-25	C-9.1

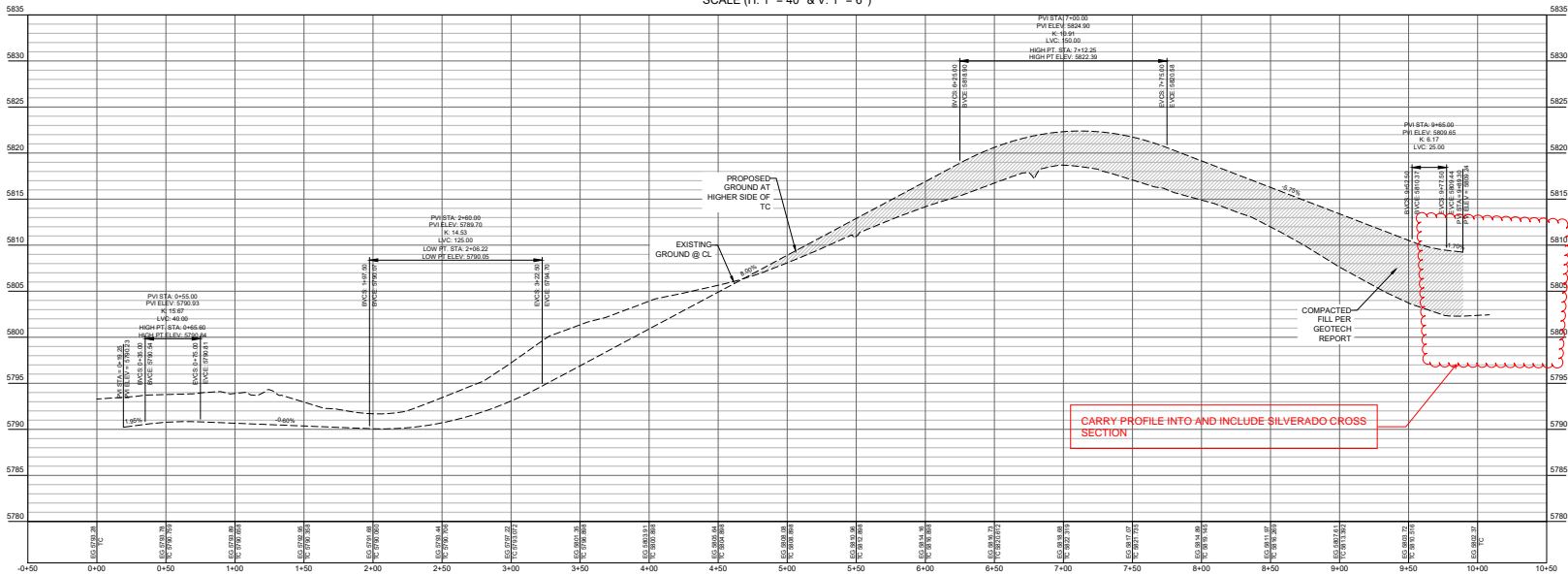
NO.	DATE	DESCRIPTION	BY
1	08/25/25	1ST PRELIMINARY PUD SUBMITTAL	RY
.	.	.	.
.	.	.	.
.	.	.	.
.	.	.	.

FOR PRELIMINARY REVIEW ONLY

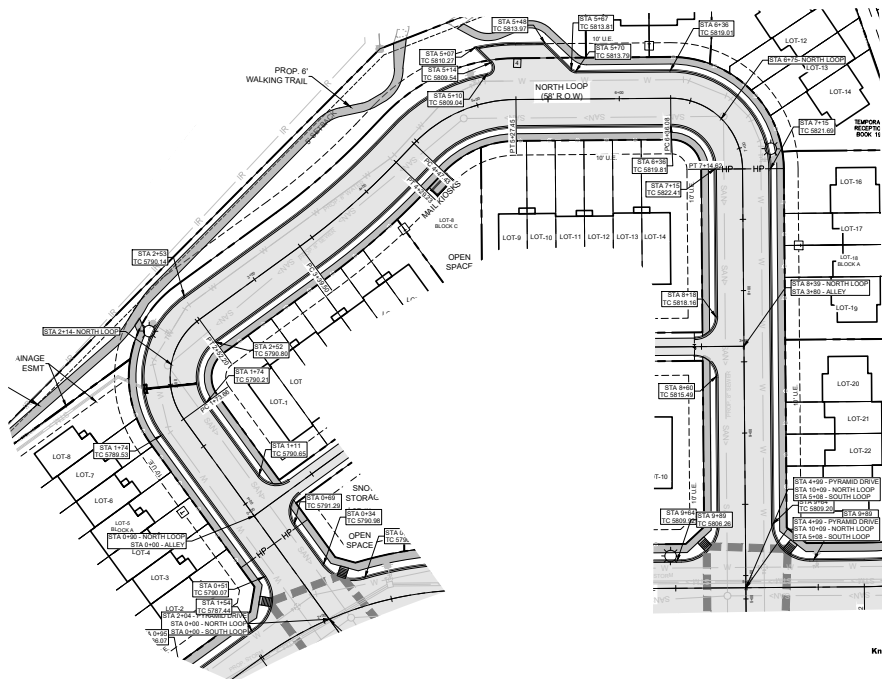


Know what's below.
Call before you dig.

NORTH LOOP PROFILE
SCALE (H: 1" = 40' & V: 1" = 6')



LEGEND			
R.O.W.	RIGHT-OF-WAY	FG	FINISHED GROUND
TP	TOP OF PAVEMENT	EG	EXISTING GROUND
EXP	EXISTING TOP OF PAVEMENT		
LP	LOW POINT		
HP	HIGH POINT		
ZOR	RADIUS		
PC	POINT OF CURVATURE		
PT	POINT OF TANGENCY		
PI	POINT OF INTERSECTION		
PVI	POINT OF VERTICAL INTERSECTION		
CONST.	CONSTRUCT CENTERLINE		
RT	RIGHT		
LT	LEFT		
GND	GROUND		
			DIRECTION OF DRAINAGE FLOW
			CENTERLINE
			PROPOSED ROAD (BY OTHERS)
			PROPOSED ROAD



WITH THE PROFILE BEING TOP OF CURB, BOTH CURB LINES AND CENTERLINE PROFILE WILL NEED TO BE PROVIDED TO UNDERSTAND THE FULL CHARACTER OF THE INTENDED DRAINAGE, TRANSITION CROSS SLOPES, LOW POINTS, HIGH POINTS, ETC...

REFER TO TRAFFIC IMPACT ANALYSIS DONE BY TURKKEY CONSULTING, LLC DATED JULY 2025.

ALL GEOTECHNICAL ENGINEERING RECOMMENDATIONS SHALL BE ADHERED TO REPORT DONE BY K+A ASSOCIATES, INC. DATED JUNE 2025.

NOTE: REFER TO SHEET C-9.0 FOR TYPICAL PAVEMENT DETAILS.

PAVING PLAN & PROFILE
ARCHWOOD TOWNHOMES
 CASTLE VALLEY BLVD
 67 RESIDENTIAL LOTS & 7 OPEN AREAS
 TOWN OF NEW CASTLE
 GARFIELD COUNTY, COLORADO 81647



1777A PRESTON RD
 SUITE 205
 DALLAS, TEXAS 75252
 OFFICE: (214) 454-7255

NO.	DATE	DESCRIPTION	BY	RY
1	08/25/25	1ST PRELIMINARY PUD SUBMITTAL		
.
.
.
.
.

FOR PRELIMINARY REVIEW ONLY



Know what's below.
 Call before you dig.

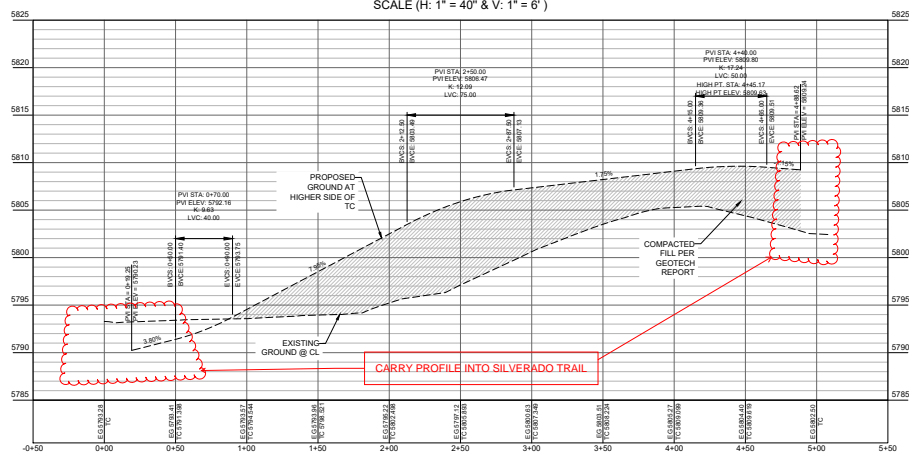
P.E.	DES.	DATE	SCALE	PROJECT NO.	SHEET NO.
RY	SS	08/25/25	SCALE 8'x4'	38-25	C-9.2

TEXAS ENGINEERING FIRM # F-20397



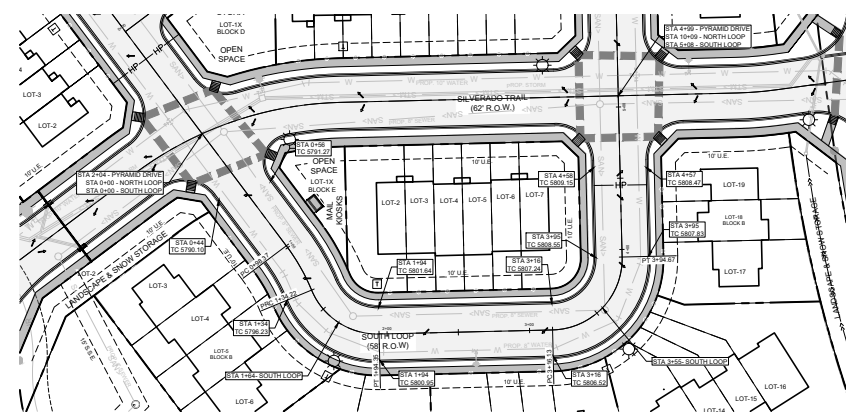
Scale: 1" = 40' Feet

SOUTH LOOP PROFILE
SCALE (H: 1" = 40' & V: 1" = 6')



WITH THE PROFILE BEING TOP OF CURB, BOTH CURB LINES AND CENTERLINE PROFILE WILL NEED TO BE PROVIDED TO UNDERSTAND THE FULL CHARACTER OF THE INTENDED DRAINAGE, TRANSITION CROSS SLOPES, LOW POINTS, HIGH POINTS, ETC...

LEGEND		
R.O.W.	RIGHT-OF-WAY	FG FINISHED GROUND
TP	TOP OF PAVEMENT	EG EXISTING GROUND
EXP	EXISTING TOP OF PAVEMENT	
LP	LOW POINT	DIRECTION OF DRAINAGE FLOW
HP	HIGH POINT	CENTERLINE
ZOR	RADIUS	
PC	POINT OF CURVATURE	
PT	POINT OF TANGENCY	"PROP" ROAD (BY OTHERS)
PI	POINT OF INTERSECTION	
PVI	POINT OF VERTICAL INTERSECTION	PROPOSED ROAD
CONST.	CONSTRUCT	
℄	CENTERLINE	
RT	RIGHT	
LT	LEFT	
GND	GROUND	



REFER TO TRAFFIC IMPACT ANALYSIS DONE BY TURNKEY CONSULTING, LLC DATED JULY 2025.

ALL GEOTECHNICAL ENGINEERING RECOMMENDATIONS SHALL BE ADHERED TO REPORT DONE BY K+A ASSOCIATES, INC. DATED JUNE 2025.

NOTE: REFER TO SHEET C-8.0 FOR TYPICAL PAVEMENT DETAILS.

PAVING PLAN & PROFILE	
ARCHWOOD TOWNHOMES	
CASTLE VALLEY BLVD	
67 RESIDENTIAL LOTS & 7 OPEN AREAS	
TOWN OF NEW CASTLE	
GARFIELD COUNTY, COLORADO 81647	



17774 PRESTON RD
SUITE 205
DALLAS, TEXAS 75252
OFFICE: (214) 454-7255

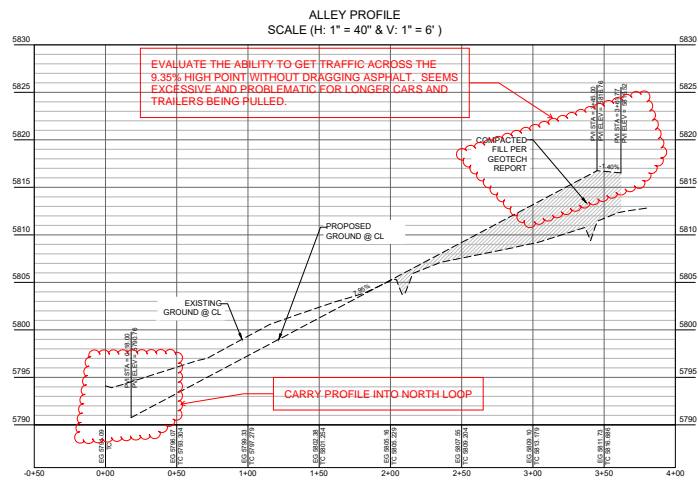
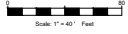
NO.	DATE	DESCRIPTION	BY
1	08/25/25	1ST PRELIMINARY PUD SUBMITTAL	RY
.	.	.	.
.	.	.	.
.	.	.	.
.	.	.	.
.	.	.	.

FOR PRELIMINARY REVIEW ONLY

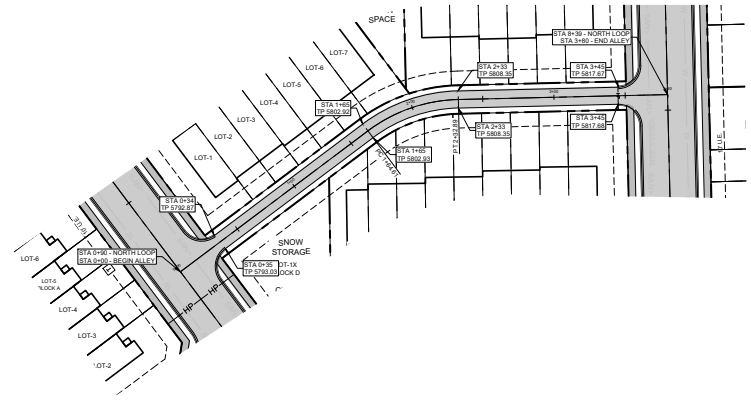


P.E.	DES.	DATE	SCALE	PROJECT NO.	SHEET NO.
RY	SS	08/25/25	SCALE 8/11	38-25	C-9.3

TEXAS ENGINEERING FIRM # F-20397



LEGEND		
R.O.W.	RIGHT-OF-WAY	FG FINISHED GROUND
TP	TOP OF PAVEMENT	EG EXISTING GROUND
EXP	EXISTING TOP OF PAVEMENT	→ DIRECTION OF DRAINAGE FLOW
LP	LOW POINT	--- CENTERLINE
HP	HIGH POINT	--- PROPOSED ROAD (BY OTHERS)
20R	RADIUS	▨ PROPOSED ROAD
PC	POINT OF CURVATURE	
PT	POINT OF TANGENCY	
PI	POINT OF INTERSECTION	
PVI	POINT OF VERTICAL INTERSECTION	
CONST.	CONSTRUCT	
CL	CENTERLINE	
RT	RIGHT	
LT	LEFT	
GND	GROUND	



REFER TO TRAFFIC IMPACT ANALYSIS DONE BY TURNKEY CONSULTING, LLC DATED JULY 2025.

ALL GEOTECHNICAL ENGINEERING RECOMMENDATIONS SHALL BE ADHERED TO REPORT DONE BY K+A ASSOCIATES, INC. DATED JUNE 2025.

NOTE: REFER TO SHEET C-9.0 FOR TYPICAL PAVEMENT DETAILS.

PAVING PLAN & PROFILE
ARCHWOOD TOWNHOMES
CASTLE VALLEY BLVD
67 RESIDENTIAL LOTS & 7 OPEN AREAS
TOWN OF NEW CASTLE
GARFIELD COUNTY, COLORADO 81647



17774 PRESTON RD
SUITE 205
DALLAS, TEXAS 75252
OFFICE: (214) 454-7255

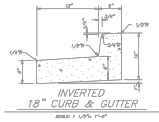
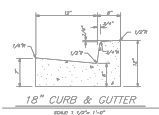
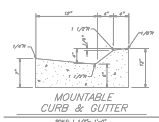


NO.	DATE	DESCRIPTION	BY
1	08/25/25	1ST PRELIMINARY PUD SUBMITTAL	RY
.	.	.	.
.	.	.	.
.	.	.	.
.	.	.	.
.	.	.	.

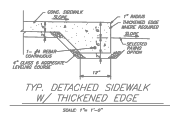
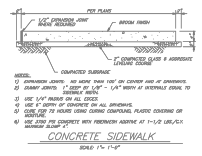
FOR PRELIMINARY REVIEW ONLY

P.E.	DES.	DATE	SCALE	PROJECT NO.	SHEET NO.
RY	SS	08/25/25	SCALE 8x11	38-25	C-9.4

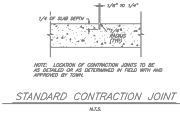
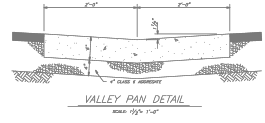
TEXAS ENGINEERING FIRM # F-20397



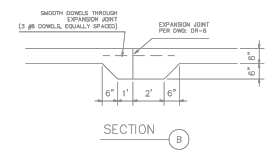
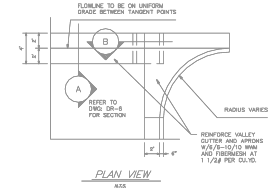
24" CURB AND GUTTER DETAILS
TOWN OF NEW CASTLE
NOT TO SCALE DWG: DR-10



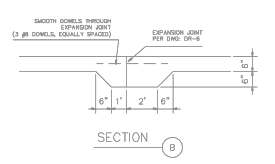
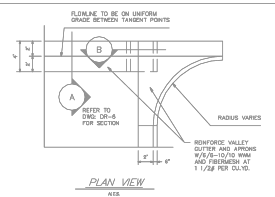
TYPICAL SIDEWALK AND SIDEWALK W/ THICKENED EDGE
TOWN OF NEW CASTLE
NOT TO SCALE DWG: DR-40



VALLEY PAN DETAIL AND EXPANSION AND CONTRACTION JOINT DETAILS
TOWN OF NEW CASTLE
NOT TO SCALE DWG: DR-60



VALLEY GUTTER AT INTERSECTION
TOWN OF NEW CASTLE
NOT TO SCALE DWG: DR-70



VALLEY GUTTER AT INTERSECTION
TOWN OF NEW CASTLE
NOT TO SCALE DWG: DR-70



NO.	DATE	DESCRIPTION	BY
1	08/25/25	1ST PRELIMINARY PUD SUBMITTAL	RY
.	.	.	.
.	.	.	.
.	.	.	.
.	.	.	.
.	.	.	.
.	.	.	.

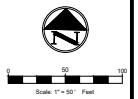
FOR PRELIMINARY REVIEW ONLY

PAVING DETAILS
ARCHWOOD TOWNHOMES
 CASTLE VALLEY BLVD
 67 RESIDENTIAL LOTS & 7 OPEN AREAS
 TOWN OF NEW CASTLE
 GARFIELD COUNTY, COLORADO 81647

1774 PRESTON RD
 SUITE 205
 DALLAS, TEXAS 75252
 OFFICE: (214) 454-7255

P.E.	DES.	DATE	SCALE	PROJECT NO.	SHEET NO.
RY	SS	08/25/25	SCALE 1/4" = 1'-0"	38-25	C-9.5

TEXAS ENGINEERING FIRM # F-20397



LEGEND

- STOP (R1-1)
- SPEED LIMIT 20 MPH (R2-1)
- STREET NAME SIGNS (D3 OR TO MATCH LOCAL SIGNAGE)
- NO PARKING ANY TIME (R7-1)

SIGNAGE & STRIPING NOTES

1. ALL SIGN LOCATION AND CONSTRUCTION TO MUTCD & TOWN OF NEW CASTLE STANDARDS. ALL STREET SIGNS TO BE HIGH INTENSITY PRISMATIC SIGNS. REFER TO SIGN DETAIL ON THIS SHEET.
2. ALL CROSSWALK MARKINGS, AND STOP BARS TO BE WHITE REFLECTIVE THERMOPLASTIC. REFER TO DETAIL ON THIS SHEET.
3. STREET NAME SIGNS TO BE MOUNTED ABOVE STOP AND YIELD SIGNS ON SITE. STREET SIGNS TO CONFORM TO TOWN OF NEW CASTLE STANDARDS.

REFER TO PUBLIC WORKS COMMENTS REGARDING SHOW REMOVAL SIGNAGE



NO.	DATE	DESCRIPTION	BY
1	08/25/25	1ST PRELIMINARY PUD SUBMITTAL	RY
.	.	.	.
.	.	.	.
.	.	.	.
.	.	.	.
.	.	.	.
.	.	.	.

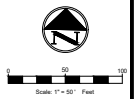
FOR PRELIMINARY REVIEW ONLY

SIGNAGE & STRIPING PLAN
ARCHWOOD TOWNHOMES
 CASTLE VALLEY BLVD
 67 RESIDENTIAL LOTS & 7 OPEN AREAS
 TOWN OF NEW CASTLE
 GARFIELD COUNTY, COLORADO 81647



17774 PRESTON RD
 SUITE 205
 DALLAS, TEXAS 75252
 OFFICE: (214) 454-7255

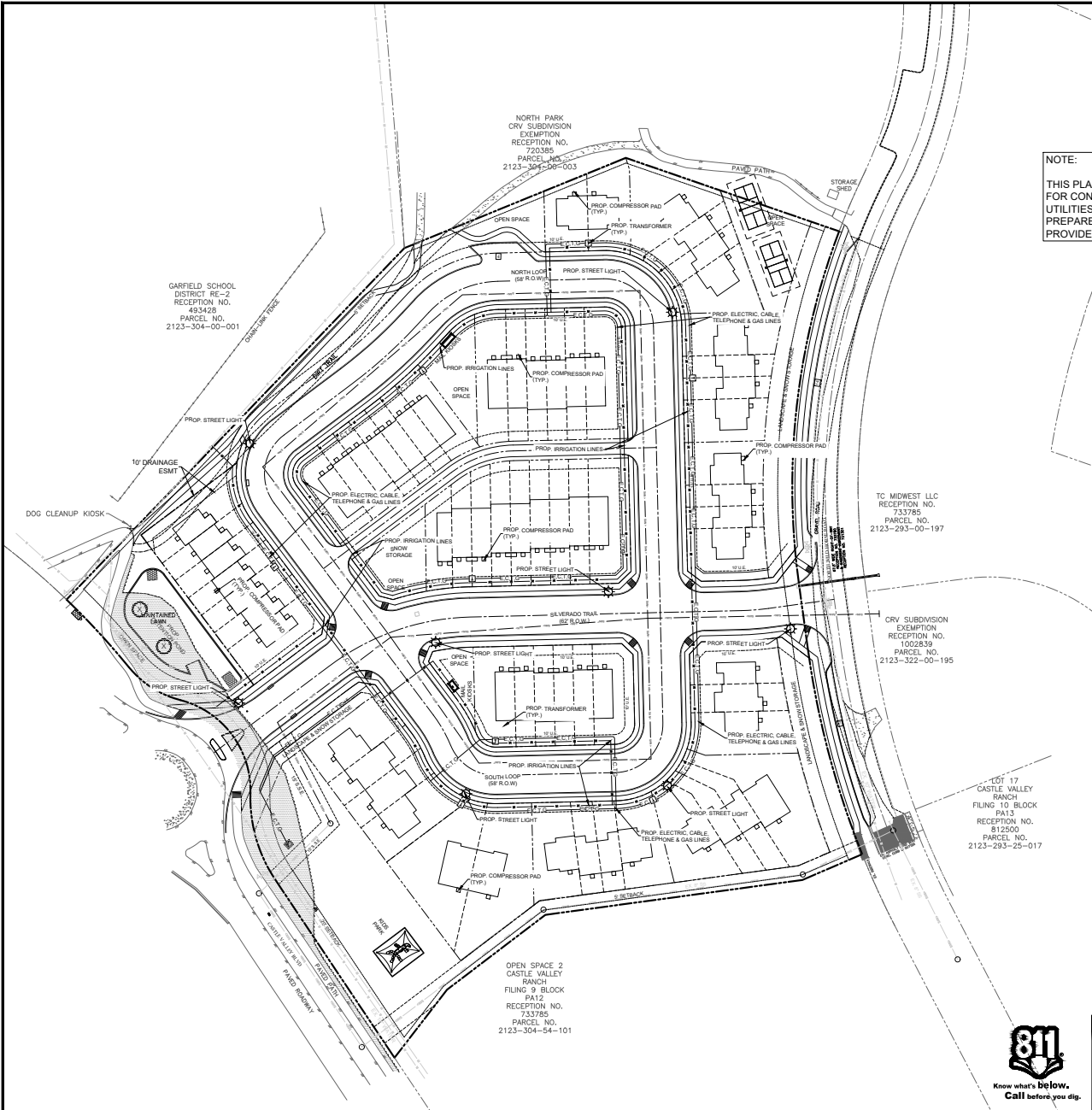
P.E.	DES.	DATE	SCALE	PROJECT NO.	SHEET NO.
RY	SS	08/25/25	SCALE 8/11	38-25	C-10.0



UTILITY LEGEND	
UNDERGROUND TELEPHONE LINE	---
UNDERGROUND ELECTRIC LINE	---
GAS LINE	---
SANITARY SEWER LINE	---
WATER MAIN	---
DOMESTIC WATER LINE	---
STORM SEWER LINE	---
STORM SEWER MANHOLE	○
STORM SEWER CLEANOUT	○
SANITARY SEWER MANHOLE	○
SANITARY SEWER CLEANOUT	○
SANITARY SEWER DOUBLE CLEANOUT	○
SANITARY SEWER SAMPLE PORT	○
GREASE TRAP	⊞
DOMESTIC WATER METER	⊞
IRRIGATION METER	⊞
GAS METER	⊞
FIRE HYDRANT	⊞
FIRE DEPARTMENT CONNECTION-FDC	⊞
TRANSFORMER	⊞
LIGHT POLE	⊞
POWER POLE	⊞

NOTE:
THIS PLAN IS FOR REFERENCE ONLY.
FOR CONSTRUCTION PLANS OF THIS
UTILITIES, REFER TO RELATED PLANS
PREPARED BY EACH INDIVIDUAL
PROVIDER/ LANDSCAPE ARCHITECT.

**REFER TO PUBLIC WORKS
COMMENTS REGARDING
IRRIGATION
REQUIREMENTS**



FRANCHISE UTILITY & LIGHTING PLAN
ARCHWOOD TOWNHOMES
CASTLE VALLEY BLVD
CASTLE VALLEY
67 RESIDENTIAL LOTS & 7 OPEN AREAS
TOWN OF NEW CASTLE
GARFIELD COUNTY, COLORADO 81647



17774 PRESTON RD
SUITE 208
DALLAS, TEXAS 75252
OFFICE: (214) 454-7255

P.E.	DES.	DATE	SCALE	PROJECT NO.	SHEET NO.
RY	SS	08/25/25	SCALE 8/11	38-23	C-11.0

NO.	DATE	DESCRIPTION	BY
1	08/25/25	1ST PRELIMINARY PUD SUBMITTAL	RY
.	.	.	.
.	.	.	.
.	.	.	.
.	.	.	.
.	.	.	.

FOR PRELIMINARY
REVIEW ONLY

