

MISSION

YouthZone provides comprehensive assessment and advocacy to inspire healthy relationships between youth, families, and communities.

VISION

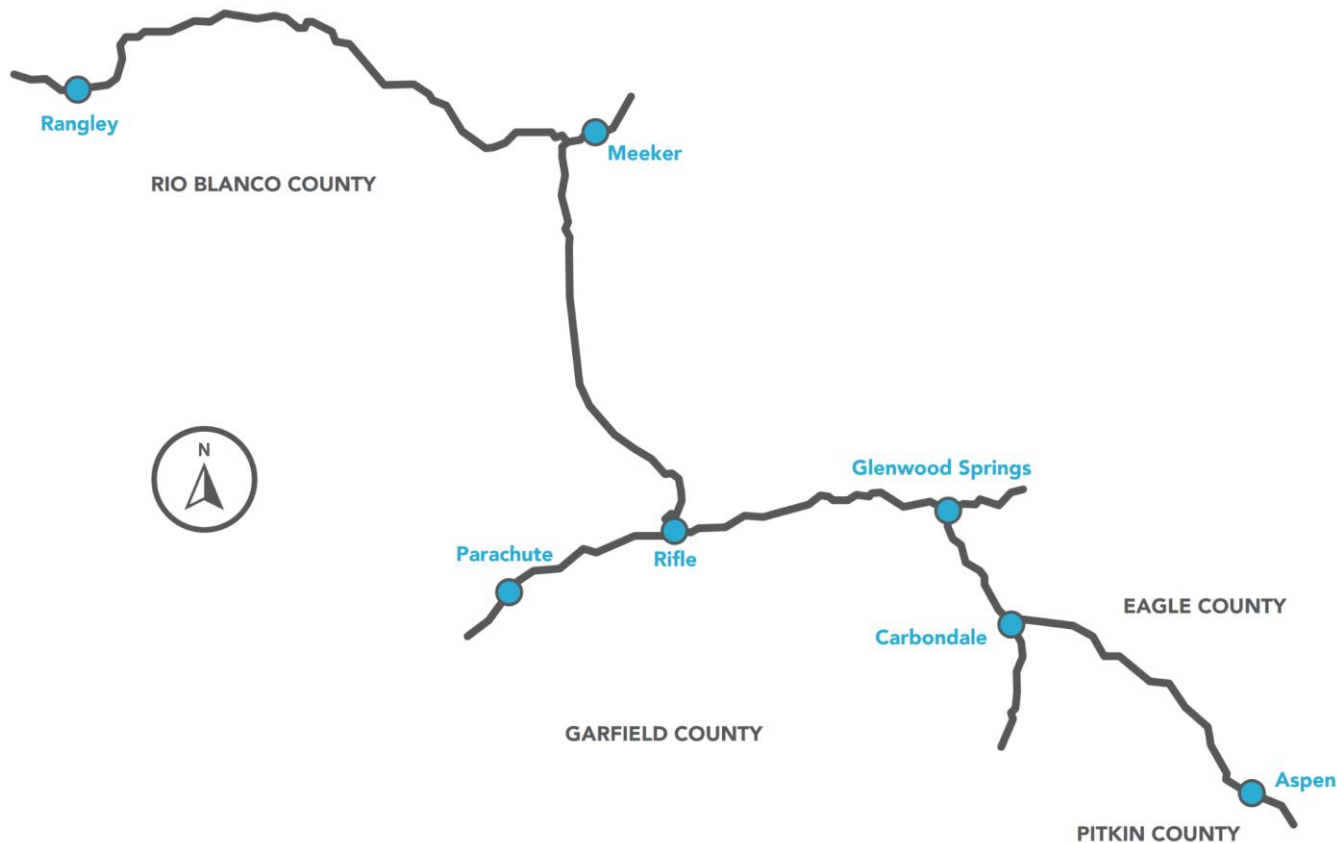
Hopeful Youth, Strong Families, & Safe Communities

CORE VALUES

Inspire with Integrity, No judgements, Stewardship and believe in Possibilities, Inclusiveness, Restoration and Encouragement



9th Judicial District and YouthZone



GOALS AND OUTCOMES

- To intervene with youth who exhibit risky, disruptive or criminal juvenile behaviors,
- YouthZone:
 - Provides youth tools and resources to **reduce risk** and elevate success
 - Supports the entire family unit and promotes **healthier family** relationships
 - Supports **mental health** through coaching, counseling and education
 - Intervenes with **substance** use through intervention, education and counseling
 - Heals communities through **restorative processes**



**Evidence Based: Sensitive to program effectiveness, completion, and client recidivism. The screener includes 60 questions, of which seven are identifying and demographic. Staff collect quality screening answers, as well as assets and risks. The screener is at a 7th-grade reading level and takes about 15 minutes to complete.*

The YouthZone survey measures the following five domains:

- Substance Use
- Alcohol Use
- Optimism and Problem Solving
- Delinquency and Community Engagement
- Trauma



PROGRAMS & SERVICES

Youth Services

Assessments – Youth and Family
Youth Advocacy - Case Management
Counseling – Individual
Substance Use Counseling & Education
Restorative Justice
Victim/Offender Mediation
Teen Groups
Useful Public Service
Deferred Sentencing Programs through Courts
Diversion
Life Skills Classes
Youth Coaching
CYDC Detention Screening 9th District

Parent Support

Parent Consultation
Parent Education
Family Mediation

[Online Referral Form](#)

www.youthzone.com



COST & SOURCES OF INCOME

- \$200 fee per client to initiate services
- Average overall cost per youth is \$2,000 for a 3-month program
- FY24-25 budget at \$2.4m
- 73% grant-funded
- 15% earned-income
- 12% contributions



Our goals for FY24-25:

- 1) Leverage **community partnerships** for better outcomes and outreach. This includes coordinating with schools and law enforcement agencies to identify pre-ticket youth
- 2) Reduce **barriers to access**, including transportation, language, cost, and timeliness.
- 3) **Improve capacity** to serve youth and families in need of mental health and substance use intervention



New Castle Data

23.24

- 69 Total Assessments
- 17 Assessments provided to non New Castle residents charged in NC or attend school in NC
- 4 CYDC (Colorado Youth Detention Screenings)
- 238 Community Members
- 2,070 Service Hours
- Top Charges: Marijuana, Harrassment
- Top Referral Sources: GWS Muni Court, Rifle County Court, District Court, NC Muni Court, Riverside Middle School

22.23

- 36 Total Assessments
- 177 Community members
- 1080 Service Hours
- Top Charges: Marijuana, Motor Vehicle Theft, Trespassing



ORGANIZATION-WIDE DEMOGRAPHICS

- 62% male, 37% female, 1% non-binary
- 48% Caucasian; 46% Latino; 2% African American; 3% multi racial; 1% Asian American, Native American, or other
- 69% of referrals come straight from court. Common charges include:
 - Possession of marijuana
 - Possession of alcohol
 - Petty theft
 - Criminal Mischeif
 - Assault and battery
- 20% of referrals are from schools and pre-ticket law enforcement contact. This allows YouthZone to provide prevention services prior to formal engagement with the judicial system.
- 6% of referrals are parent consultations



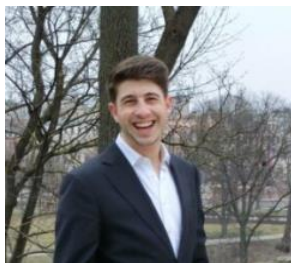
IMPACT

- 93% of clients did not reoffend while working with YouthZone
- 93% completed their contracts successfully.
- 38% of clients who completed a post survey self-reported improvement in at least one metric
- Results of our independent evaluation indicate that YouthZone's services are statistically significant in reducing risk in all areas for all clients, regardless of demographics or charge
- Only judicial district in Colorado that holds all levels of diversion (preticket referral, muni/county court, district, CYDC)

Support Staff and Key Consultants



Jami Hayes, ED



Ali Naaseh-Shahry-
Development Director



Lyn Williams, Director of Ops



Naomi Pena, Administrative
and Data Specialist



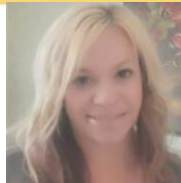
Vanessa Otero,
Administrative Assistant



Tania Beltran, Business
Manager

Direct Service Staff

**Airen Goodman,
Program Director**



**Paula Hall,
Clinical Director**



Municipal and County Court Program

**Mariah Dickson,
Court Coordinator**



**Becca Paturalski,
Youth Advocate**



**Travis Wilson,
Youth Advocate**



**Guadalupe Olivas,
Youth Advocate**



**Abigail Jurardo,
Youth Advocate**

CYDC/Diversion Program

**Airen Goodman,
CYDC/Diversion
Coordinator**



**Aida Bonilla,
Pretrial and
Diversion Specialist**



**Silvia Barragan,
Pretrial and
Diversion Specialist**



Restorative Justice Program

**Chelsea Smith,
Restorative Justice
Coordinator**



**Pete Durrance,
Restorative Justice
Specialist**



Parent and Community Program

**Sarai Quintana,
Parent and
Community Outreach
Coordinator**



Substance Program

**Michelle Medrano,
Substance Coordinator**



**Erin Greenwald,
Substance Specialist
and Youth Advocate**



**Keri Sorenson,
Substance Specialist
and Youth Advocate**



Key Partnerships



Office of Gun Violence Prevention

Colorado Youth Detention Continuum (CYDC)



Contact:

Jami Hayes, Executive Director

970-945-9300

Ali Naaseh-Shahry, Development Director

970-930-6540

YouthZone Main Line

970-945-9300

Donations to support our work can be made at:

www.youthzone.com