



**EXTERIOR ENTRY LIGHT-SCONCE**  
 + UNIT EXTERIOR PATIO LIGHT  
 LINEAR WALL SCONCE



**EXTERIOR ENTRY LIGHT-CEILING**  
 LIGHT-CEILING  
 FLUSHMOUNT



**BUILDING NUMBERS -**  
 LIGHTED HOUSE NUMBERS  
 COLOR: BLACK / WHITE LED



**WINDOWS-**  
 COLOR: MATTE BLACK



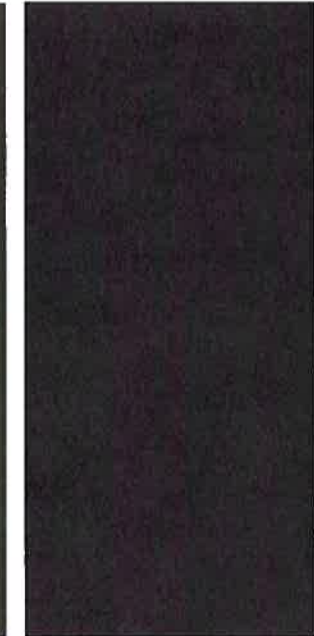
**FC PANEL PAINT**  
 NATURAL LINEN



**ACCENT PAINT**  
 PENNYWISE



**FC VERTICAL PAINT**  
 SECRET GARDEN

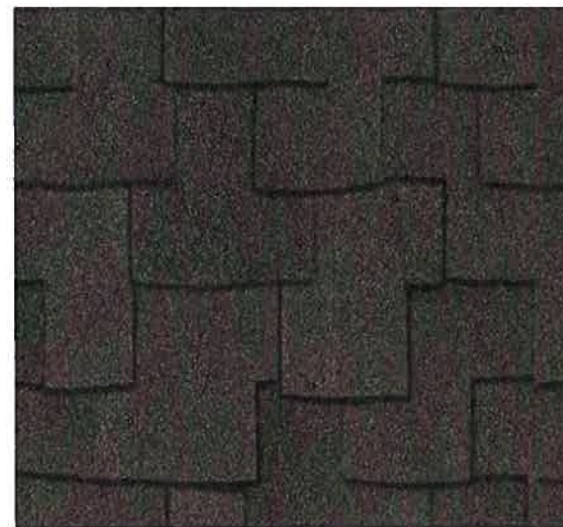


**ACCENT PAINT**  
 TRICORN BLACK

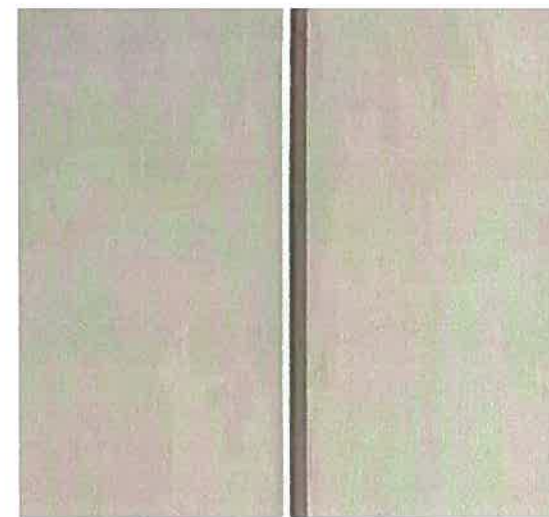


Benchmark Clear Pine

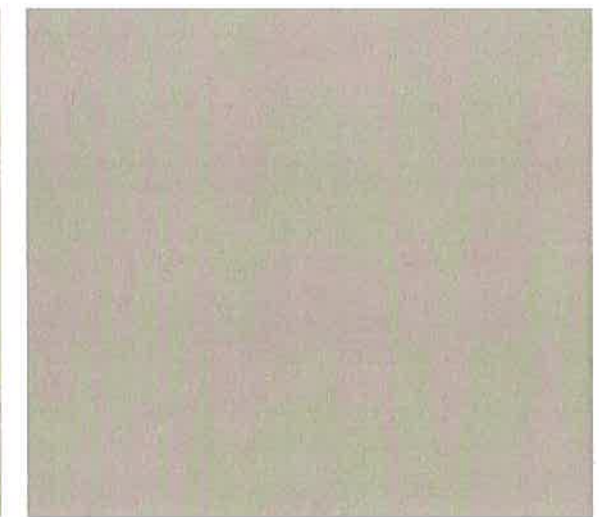
**THERMORY HEAT TREATED WOOD CLADDING:** T&G SIDING, BENCHMARK CLEAR PINE WILDLAND-URBAN INTERFACE (WUI) CLASS A COMPLIANT



**ROOFING ASPHALT SHINGLES:** DARK GRAY



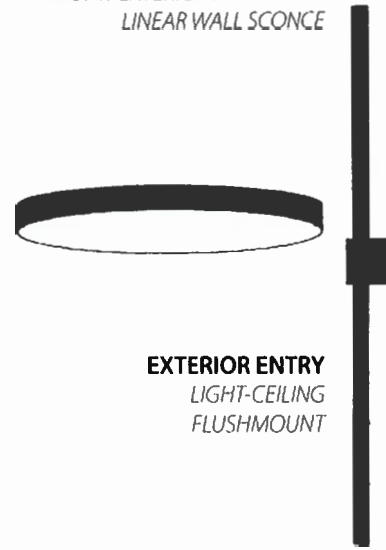
**HARDIE ARTISAN SIDING:** VERTICAL INSTALL, V-GROOVE, PAINTED



**HARDIE ARCHITECTURAL PANEL, NON-VENTED** SMOOTH SOFFIT (FASCIA TO MATCH): SMOOTH FINISH, PAINTED



**EXTERIOR ENTRY LIGHT-SCONCE**  
 † UNIT EXTERIOR PATIO LIGHT  
 LINEAR WALL SCONCE



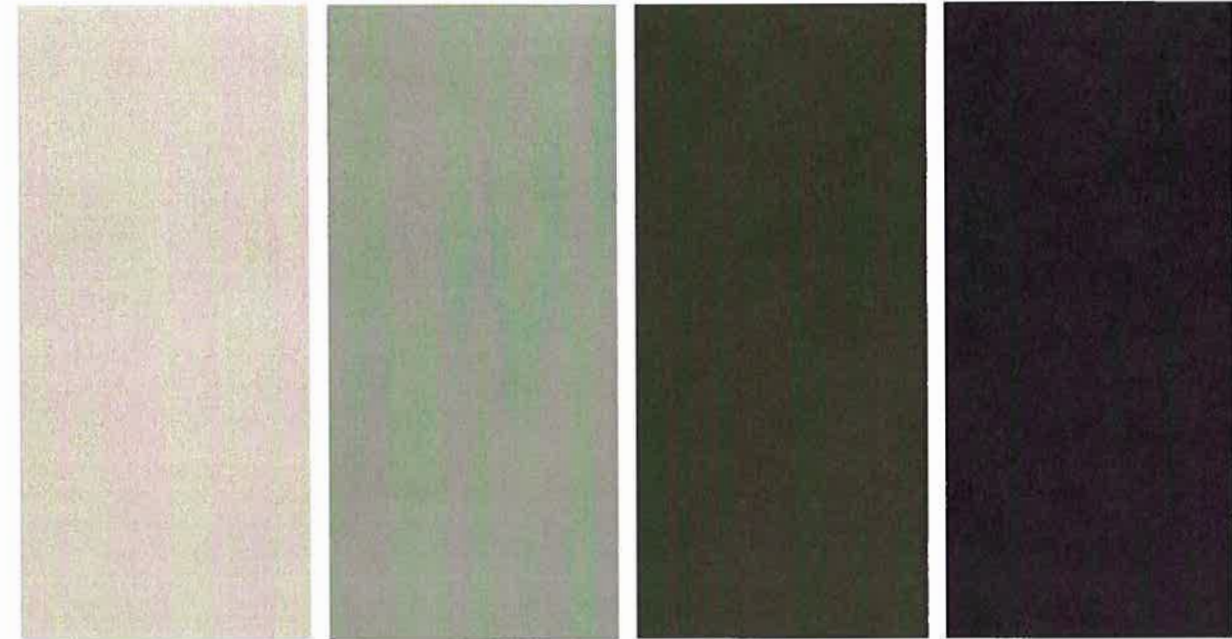
**EXTERIOR ENTRY LIGHT-CEILING FLUSHMOUNT**



**BUILDING NUMBERS - LIGHTED HOUSE NUMBERS**  
 COLOR: BLACK / WHITE LED



**WINDOWS - COLOR: MATTE BLACK**



**FC VERTICAL PAINT**  
 NATURAL LINEN

**FC LAP PAINT**  
 CLARY SAGE

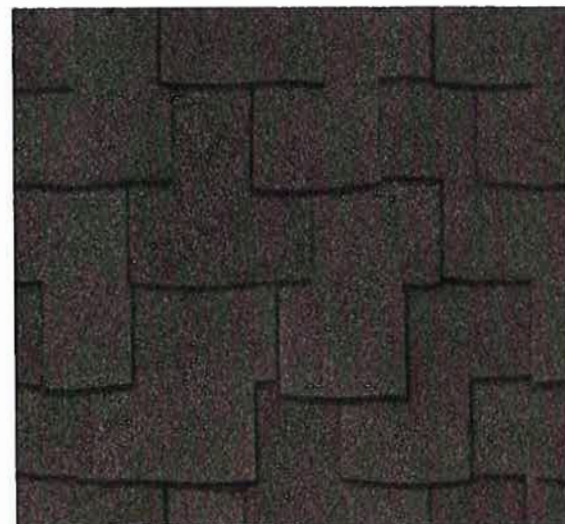
**FC LAP PAINT**  
 SECRET GARDEN

**ACCENT PAINT**  
 TRICORN BLACK

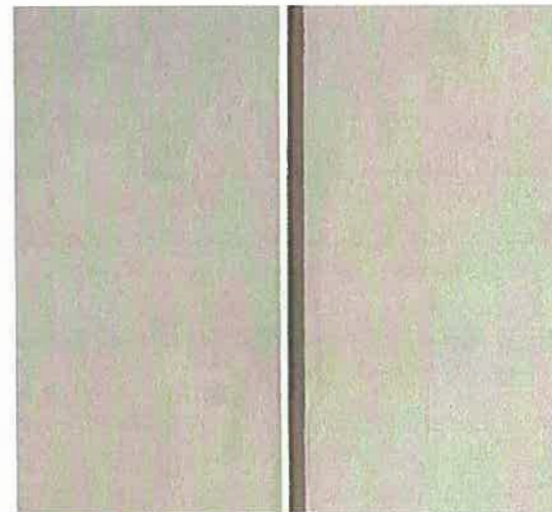


Benchmark Clear Pine

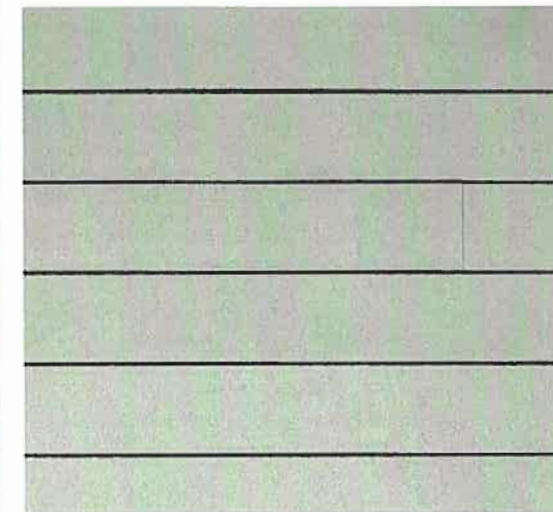
**THERMORY HEAT TREATED WOOD CLADDING:** T&G SIDING, BENCHMARK CLEAR PINE WILDLAND-URBAN INTERFACE (WUI) CLASS A COMPLIANT



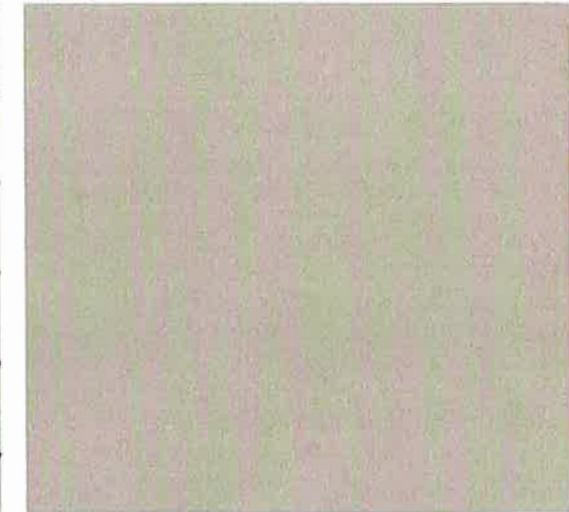
**ROOFING ASPHALT SHINGLES: DARK GRAY**



**HARDIE ARTISAN SIDING: VERTICAL INSTALL, V-GROOVE, PAINTED**



**HARDIE LAP SIDING: SMOOTH FINISH, 4" REVEAL PAINTED**



**HARDIE ARCHITECTURAL PANEL: NON-VENTED SMOOTH SOFFIT (FASCIA TO MATCH): SMOOTH FINISH, PAINTED**





