


Shoshone Water Rights Preservation

*Amy Moyer
Director of Strategic Partnerships,
Colorado River District*



SHOSHONE
WATER RIGHT PRESERVATION





**The Colorado River District
was formed in 1937 to protect
West Slope water users AND
to safeguard for Colorado all
waters of the Colorado River
to which the state is entitled.**



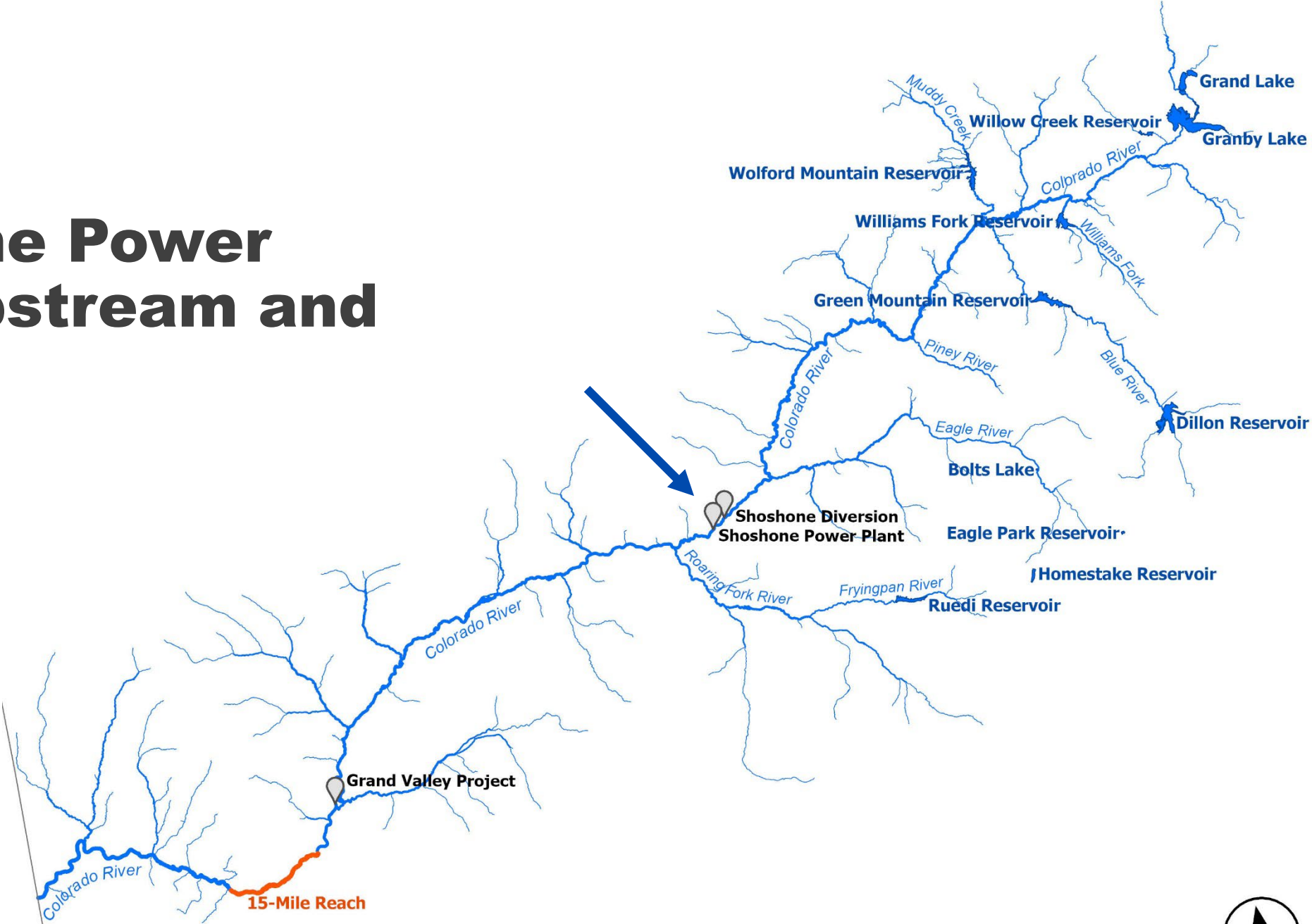


ABOUT SHOSHONE WATER RIGHTS

- Large and very senior non-consumptive right on the Colorado River – 1250 cfs under a 1902 right & 158 cfs under a 1929
- The full Shoshone call can command 1,408 cubic feet per second, or up to 1.02 MAF per year
- Benefits on the West Slope from the Headwaters to the State Line and Statewide.



Shoshone Power Plant Upstream and Down



Multiple Benefits for Colorado and the West Slope



**Clean
Drinking
Water**



Agriculture



Environment



**Recreation
Economy**

Shoshone Water Right Preservation Coalition

**Summit County – Grand County – Eagle County
Garfield County – Mesa County**

- Clifton Water District
- Clinton Ditch and Reservoir Company
- Colorado River District
- Eagle Park Reservoir Company
- Basalt Water Conservancy District
- Eagle River Water and Sanitation District
- City of Glenwood Springs
- City of Grand Junction
- Grand Valley Irrigation Company
- Grand Valley Water Users Association
- Mesa County Irrigation District
- Middle Park Water Conservancy District
- Orchard Mesa Irrigation District
- Palisade Irrigation District
- City of Rifle
- Snowmass Water & Sanitation District
- Upper Eagle Regional Water Authority
- Ute Water Conservancy District
- West Divide Water Conservancy District



WWW.KEEPSHOSHONEFLOWING.ORG

TIMELINE



Negotiating an Instream Flow Agreement between seller, CRD, and CWCB



Successful completion of a change case



Ongoing fundraising with support from local, state and federal partners



Approval from Colorado's Public Utility Commission



Anticipated Closing in 2027

On December 19, 2023, the Colorado River District executed a Purchase & Sale Agreement with Public Service Company of Colorado (A subsidiary of Xcel Energy) for \$99 million.





**\$20M –
Colorado River
District**



**\$20M – State of
Colorado**



**\$14.15M – 19
Local Partners**

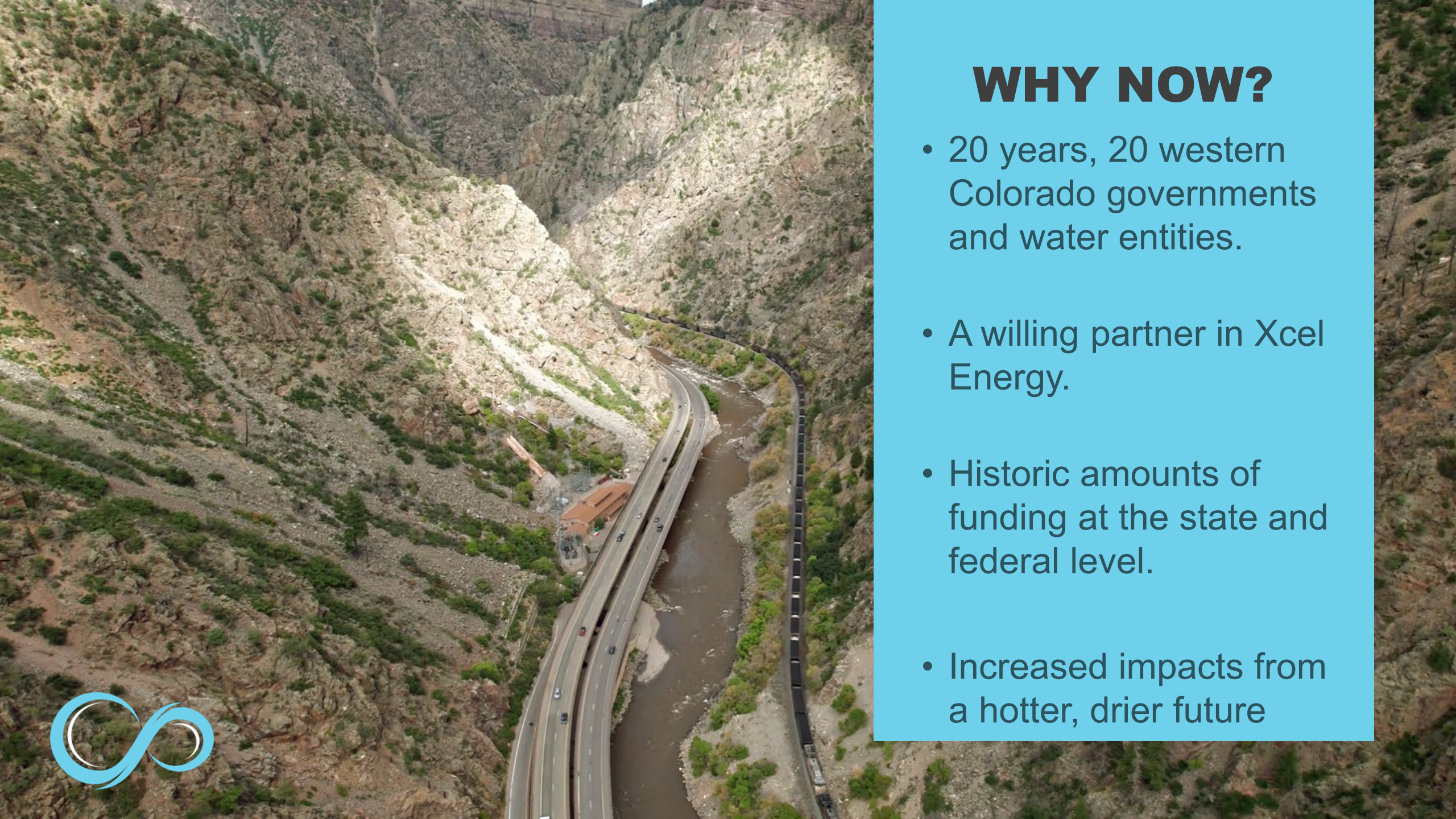
**\$54.15
million
Secured**



Middle River Contributions

| | |
|--|----------------|
| Garfield County | \$3 million |
| City of Glenwood Springs | \$2 million |
| Basalt Water Conservancy District | \$100,000 |
| City of Rifle | \$100,000 |
| Snowmass Water & Sanitation District | \$100,000 |
| West Divide Water Conservancy District | \$50,000 |
| Total | \$5.35M |





WHY NOW?

- 20 years, 20 western Colorado governments and water entities.
- A willing partner in Xcel Energy.
- Historic amounts of funding at the state and federal level.
- Increased impacts from a hotter, drier future



SHOSHONE
WATER RIGHT PRESERVATION



WWW.KEEPSHOSHONEFLOWING.ORG

Get Involved



@KeepShoshoneFlowing



@KeepShoshoneFlowing



@ShoshoneFlows

**Sign up for the
newsletter**

