



Elk Creek Elementary Sidewalk



CDOT is replacing the Highway 6 bridge over Elk Creek, including a new pedestrian bridge.

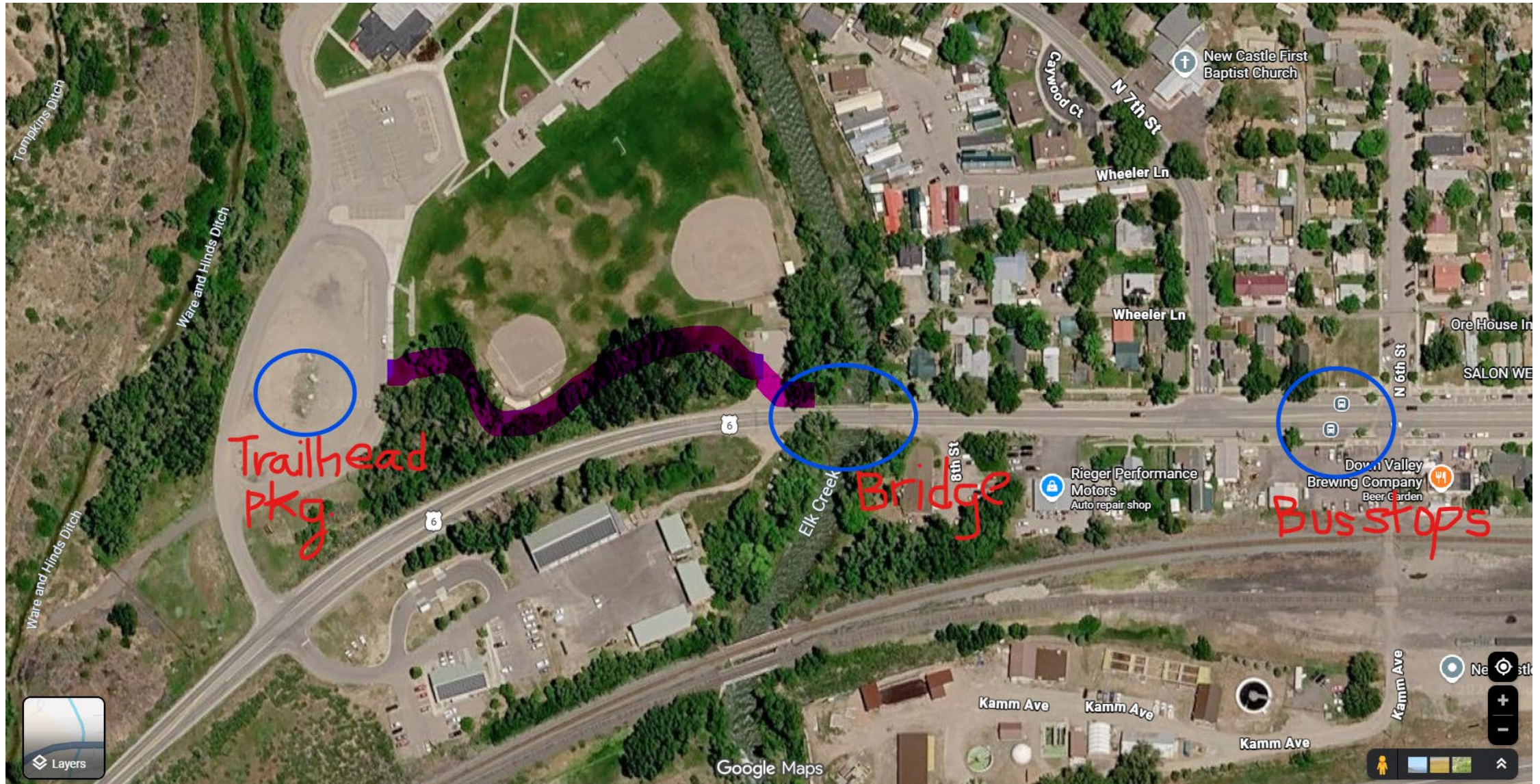
- Plans call for CDOT to build a 30' path extending from the west bridge abutment, parallel to the highway
- It will have a negative 5% grade (ADA-compliant) to bring it down to the existing asphalt surface
- No additional pedestrian corridor is planned along the shoulder of Highway 6 to the west

NEW PEDESTRIAN BRIDGE



LoVa proposes to seek grant funding to build a new sidewalk connecting the bridge to Elk Creek Elementary

- The new sidewalk will connect from the west bridge abutment to the existing sidewalk at the school parking lot.
- Sidewalk length is approximately 700 linear feet. It will be built to CDOT and Town specifications of 10' wide concrete, 6" thick with a 30-year lifespan.
- It will lie entirely on RE-2 School District property.
- The School District will build, own and maintain the sidewalk.
- Project construction will be at no cost to the Town or School District.



Trailhead Pkg

Bridge

Bus stops

Torppkins Ditch

Ware and Hinds Ditch

Ware and Hinds Ditch

New Castle First Baptist Church

Wheeler Ln

N 7th St

Gaywood Ct

Wheeler Ln

Ore House In

SALON WE

N 6th St

Down Valley Brewing Company

Beer Garden

Rieger Performance Motors
Auto repair shop

6th St

Elk Creek

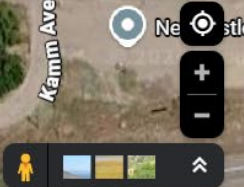
Kamm Ave

Kamm Ave

Kamm Ave

Kamm Ave

Google Maps





PROJECT ATTRIBUTES

SAFETY

- Provides a safe, separated path for students and families to the school campus
- Directs non-school related traffic away from school buildings, ball fields & students

CONNECTIVITY

- Connects downtown to the school, Burning Mountain trailhead and eventual LoVa Trail alignment to the west

TRANSIT

- The RFTA bus stop is just east of the bridge
- The parking lot supports RFTA operations as an official bus turnaround/ staging location

PROJECT BUDGET (draft)

POTENTIAL GRANT SOURCES

Grant match provided by RFTA funding earmarked for the LoVa Trail

OPTION 1 (August 2026 award for 2027 build)

- RFTA First-Last Mile Mobility (FLMM) program grant

OPTION 2 (Summer 2027 award for 2028 build)

- Garfield County Federal Mineral Lease District Joint Grant Program
-combined with-
- RFTA FLMM grant

OPTION 3 (October 2026 award for 2028 build)

- Safe Routes To School federal grant program *-combined with-*
- CDOT Transportation Alternatives Program (TAP)

TOWN OF NEW CASTLE OBLIGATIONS

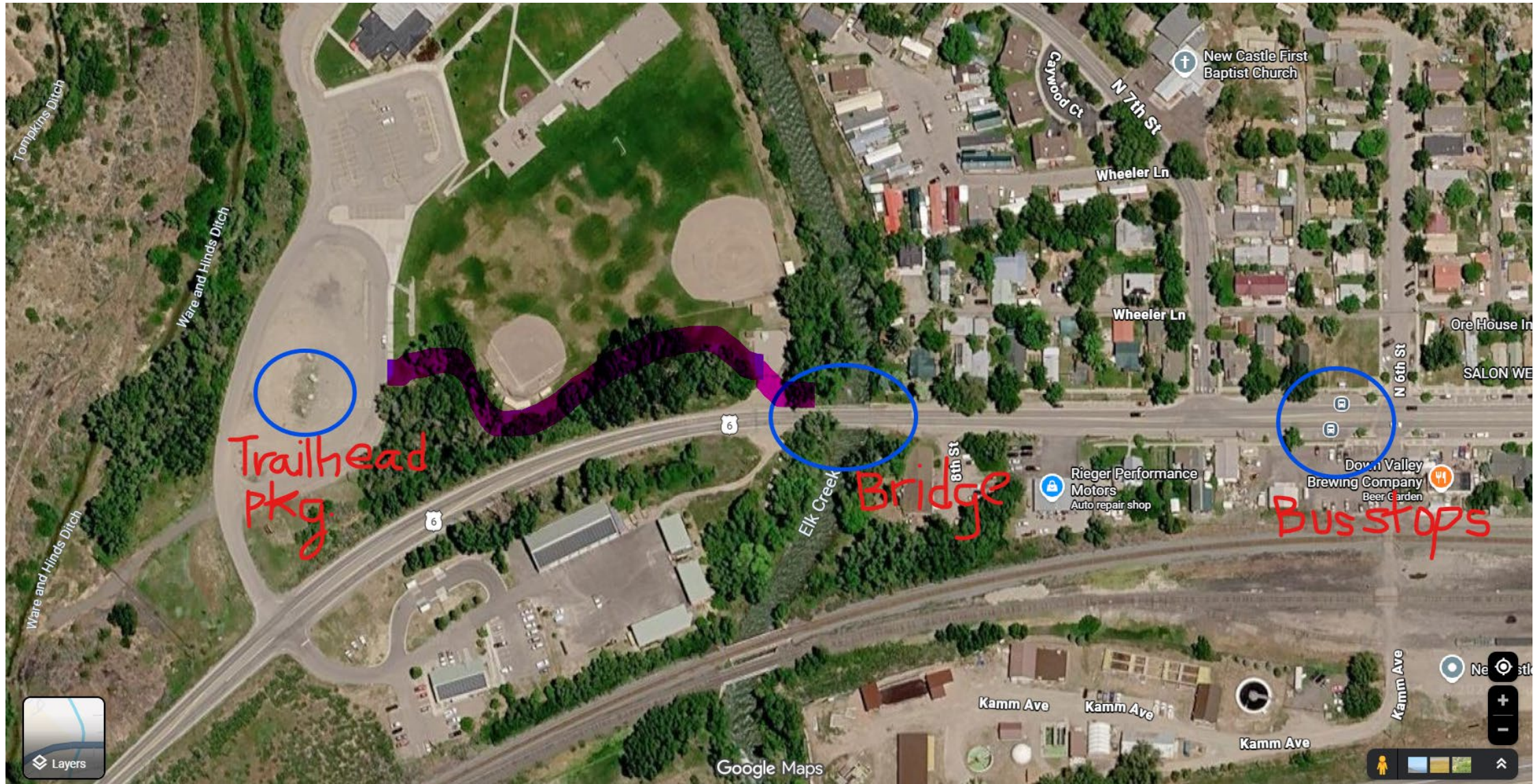
- LoVa will prepare the grant application in collaboration with Town staff
- FLMM grants must be awarded to a RFTA member-community
- If awarded, the Town will pass funds through to the School District for project management and construction
- Town will coordinate with LoVa, RFTA and New Castle Trails on signage, messaging and promotion

QUESTIONS/ CONCERNS

What's the alternative?

- No build, “bridge to nowhere”
- Dangerous situation for pedestrians stranded on the shoulder of Highway 6
- Random trespassing on school property
- Lack of connectivity to transit





Trailhead Pkg

Bridge

Bus stops

Torppkins Ditch

Ware and Hinds Ditch

Ware and Hinds Ditch

New Castle First Baptist Church

Wheeler Ln

N 7th St

Wheeler Ln

Ore House In

SALON WE

N 6th St

Down Valley Brewing Company

Beer Garden

Rieger Performance Motors
Auto repair shop

8th St

Elk Creek

Kamm Ave

Kamm Ave

Kamm Ave

Kamm Ave

Google Maps

