

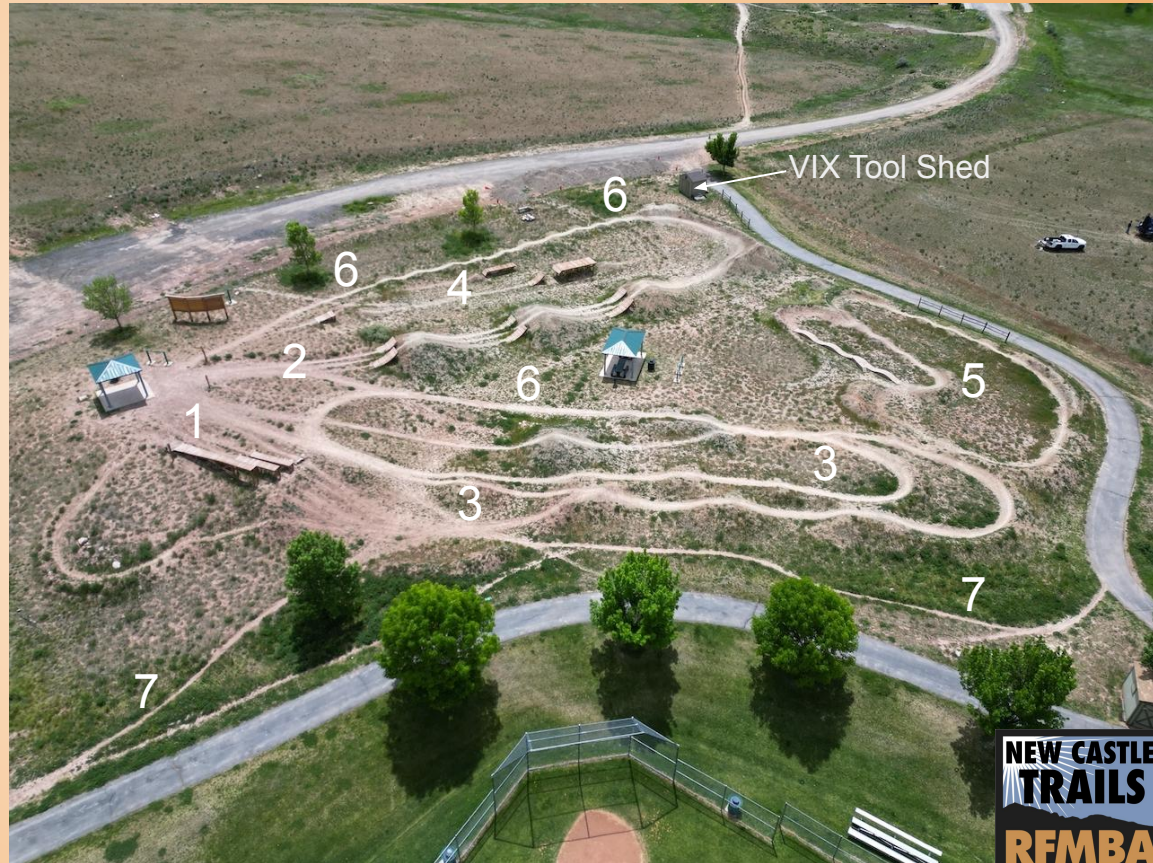


VIX Bike Park

Future Improvements Proposal

VIX Ranch Bike Park - existing conditions

1. Progressive Wood Drop Features
2. Progressive Wood Jump Features
3. Roller Tabletop Jumps
4. Lilypad Jump Features
5. Pumptrack
6. Return Trails
7. VIX Perimeter Trail



VIX Ranch Bike Park - existing conditions

Existing Signage



VIX Ranch Bike Park - existing conditions

Town Approvals: Compared to past volunteer & professional efforts to build, maintain, and improve the bike park, NCT seeks to have Town input and approval on all proposed changes.

Delivery of 'free' dirt piles over recent weeks was not coordinated or approved as intended. NCT will coordinate removal of unused dirt at no cost to Town of New Castle.

If improvements are approved by the Town, a portion of the dirt may be used in the coming weeks.

VIX Ranch Bike Park - future improvements

1. Focus on Signage
2. Focus on Long Term Attractiveness
3. Focus on Safety - near term feature improvements
4. Future Maintenance & Evolution

VIX Ranch Bike Park - future improvements

Focus on Signage:

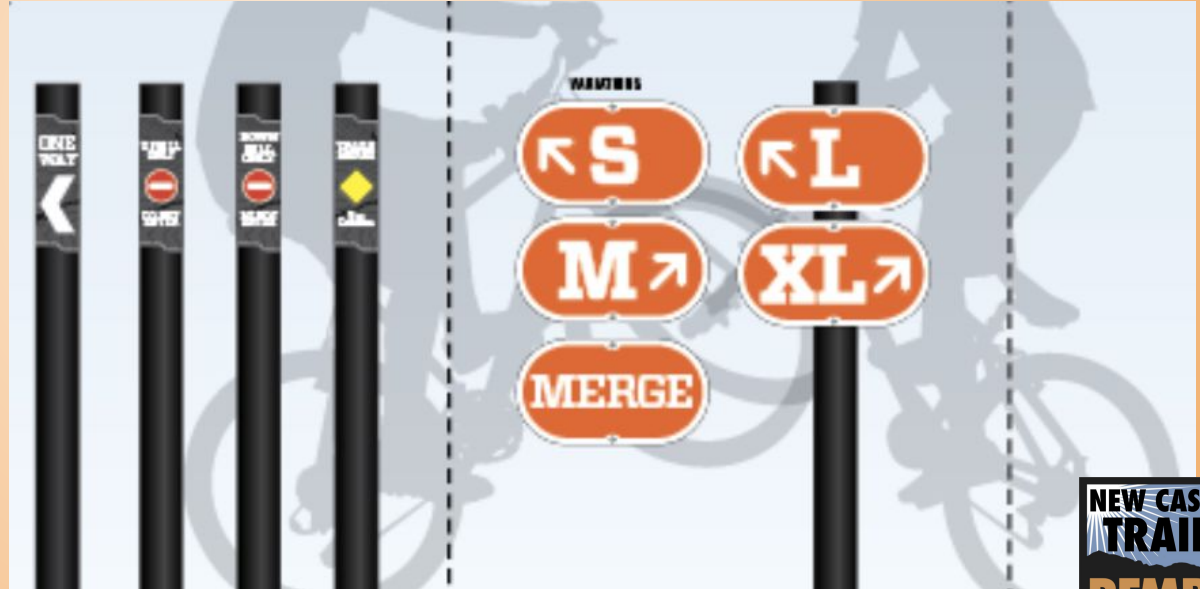
1. Add to Kiosk: overview map & bike park rules / instructional use. Use new fencing to corral park users to see overview signage.



VIX Ranch Bike Park - future improvements

Focus on Signage:

2. Add feature size and directional use signage (eliminate most two-way traffic).



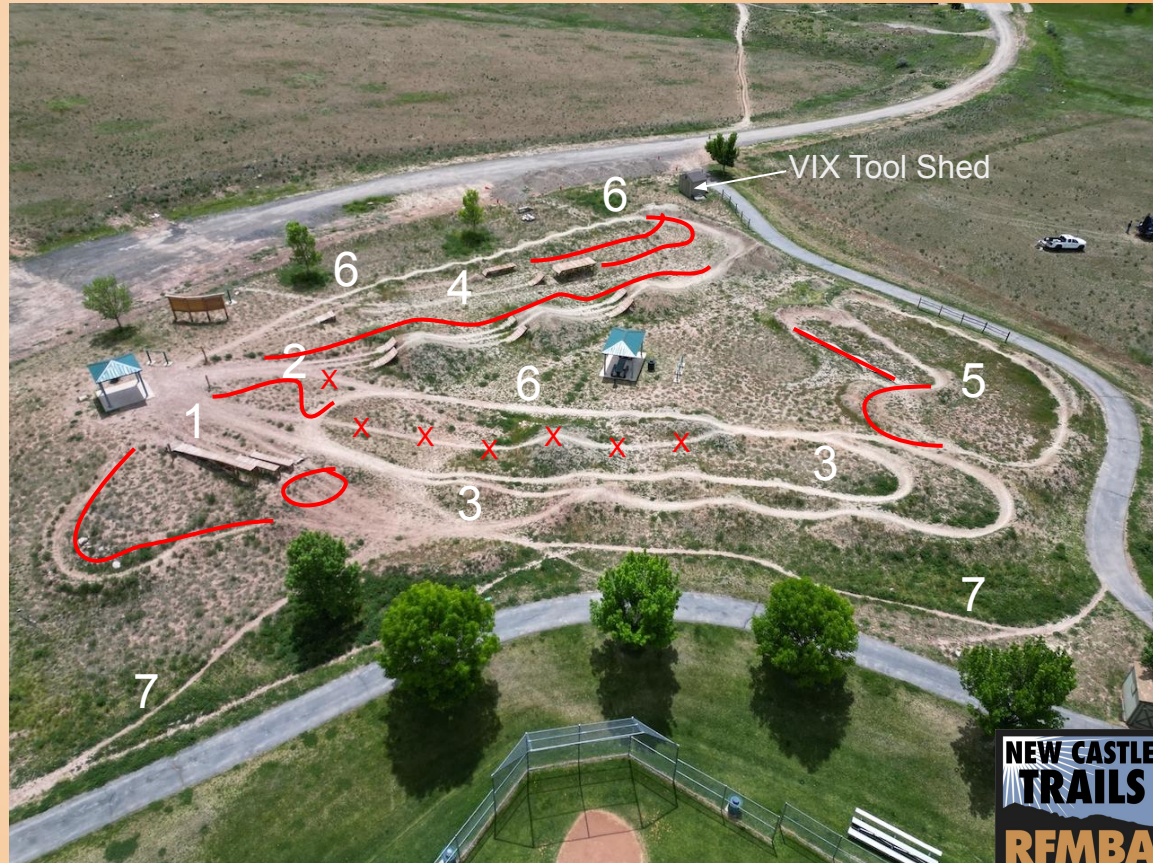
VIX Ranch Bike Park - future improvements

Focus on Long Term Attractiveness:

1. Begin to address invasive growth with best practices (weeding, spraying).
2. Introduce natural grass seed mix.
3. Explore potential for future sprinkler system use.
4. Explore usage of soil additives (to reduce weeds / maintenance) on features.
5. Stain wood features for longer life.
6. Remove unfinished wood timber drop feature located near parking.
7. Install fence along parking area (to reduce walking through the bike park area), and consider additional fencing to corral all users towards Kiosk entry signage.

VIX Ranch Bike Park - future improvements

1. Progressive Wood Drop Features
2. Progressive Wood Jump Features
3. Roller Tabletop Jumps
4. Lilypad Jump Features
5. Pumptrack
6. Return Trails
7. VIX Perimeter Trail



VIX Ranch Bike Park - future improvements

Focus on Safety - near term feature improvements:

1. Replace warped lumber at wood features. Mow back vegetation growth. Reset one feature to horizontal (that is tilting slightly).



VIX Ranch Bike Park - future improvements

Focus on Safety - near term feature improvements:

2. Re-Shape the Progressive wood jumps to be closed table tops vs. partial gap jumps.



VIX Ranch Bike Park - future improvements

Focus on Safety - near term feature improvements:

3. Create a Small rollable dirt line to the left of the Medium and Large wood jump lines. Close the middle M/L rollable dirt line.



VIX Ranch Bike Park - future improvements

Focus on Safety - near term feature improvements:

4. Reset XL Lilypad feature's entry jump to be fully horizontal, and close landing gap with additional dirt (retain the features XL progressive challenge for riders). Build a dirt landing zone for the Large lilypad feature.



VIX Ranch Bike Park - future improvements

Focus on Safety - near term feature improvements:

5. Build directional return berms at end of the L & XL lilypad jump features, to guide riders back on the return pump line back to the start.



VIX Ranch Bike Park - future improvements

Focus on Safety - near term feature improvements:

6. Reshape large mound to left of Drop Line tabletop roller jumps, to preclude two-way travel on return trail. This mound was envisioned as a jump for a mulch pit landing, but it can be reshaped to work as a tabletop jump instead.



VIX Ranch Bike Park - future improvements

Focus on Safety - near term feature improvements:

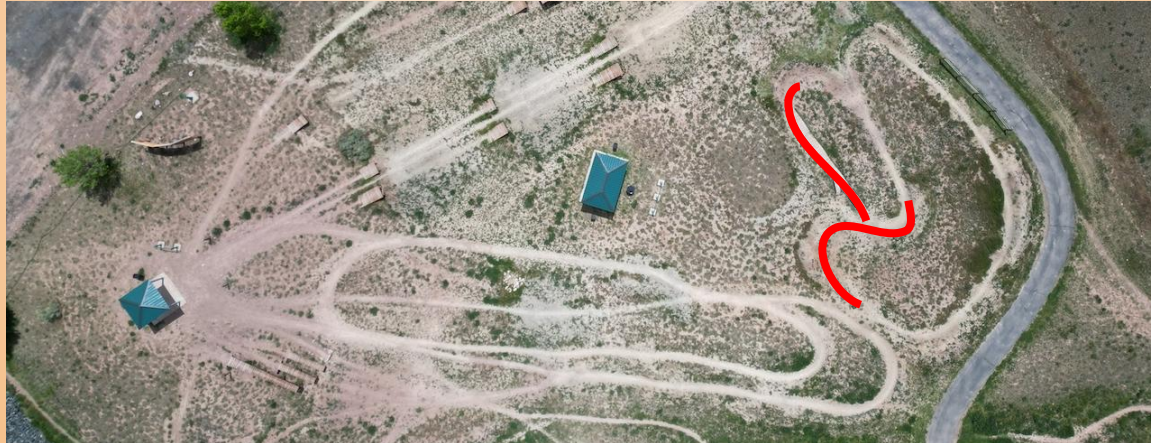
7. Build two new climbing turns for the Return trail, to avoid two-way travel on the drop in for the progressive wood jump lines (and close off a small connector trail).



VIX Ranch Bike Park - future improvements

Focus on Safety - near term feature improvements:

8. Remove wood feature at pump track, as it is getting closer to end of life. Replace with new dirt pump line. Improve flow of southern pump track berms. Refresh pump track rollers that have softened over recent years.



VIX Ranch Bike Park - future improvements

Focus on Safety - near term feature improvements:

9. Refresh Landing zone dirt for S,M,L,XL wood Drop features. Refresh and reshape alternate XS/S berm route to the south.



VIX Ranch Bike Park - future improvements

Future Maintenance, Improvements, & Evolution:

1. Combine Town's directions & approvals with local volunteer efforts and professional expertise. Utilize New Castle Trails' available funding on items 2 - 4 below.
2. Implement signage improvements as soon as possible.
3. Begin worked focused on long term attractiveness.
4. Implement near term improvements focused on safety & quality of experience.
5. Consider major improvements over coming years to meet best practice standards for this type of bike park. (Pump Track evolution, XS tot track offering, paved pump track as an option, etc.)