

## CODE COMPLIANCE

1. 2022 CALIFORNIA ADMINISTRATIVE CODE	6. 2022 CALIFORNIA FIRE CODE
2. 2022 CALIFORNIA BUILDING CODE	7. ANY LOCAL BUILDING CODE AMENDMENTS
3. 2022 CALIFORNIA ELECTRIC CODE	8. CITY/COUNTY ORDINANCES
4. 2022 CALIFORNIA MECHANICAL CODE	9. ANSI / TIA-222 STRUCTURAL CODE
5. 2022 CALIFORNIA PLUMBING CODE	10. NFPA 780 - LIGHTNING PROTECTION CODE

THIS FACILITY IS UNMANNED AND NOT FOR HUMAN HABITATION. A TECHNICIAN WILL VISIT THE SITE AS REQUIRED FOR ROUTINE MAINTENANCE. THE PROJECT WILL NOT RESULT IN ANY SIGNIFICANT DISTURBANCE OR EFFECT ON DRAINAGE. NO SANITARY SEWER SERVICE, POTABLE WATER, OR TRASH DISPOSAL IS REQUIRED AND NO COMMERCIAL SIGNAGE IS PROPOSED.

## GENERAL NOTES

IF CONTRACTOR ENCOUNTERS CONDITIONS IN FIELD, EITHER UNFORESEEN OR IN SOME MANNER IN CONFLICT WITH THESE DRAWNGS, THE CONTRACTOR SHALL NOTIFY THE REGISTERED DESIGN PROFESSIONAL OF SUCH CONDITIONS IN WRITING AND SHALL ACKNOWLEDGE ANY WORK DONE OUTSIDE OF JURISDICTIONAL PERMITTED PLANS IS DONE AT CONTRACTORS OWN RISK.

SUBCONTRACTOR SHALL VERIFY ALL PLANS & EXISTING DIMENSIONS & CONDITIONS ON THE JOB SITE & SHALL IMMEDIATELY NOTIFY THE ENGINEER IN WRITING OF ANY DISCREPANCIES BEFORE PROCEEDING WITH THE WORK OR BE RESPONSIBLE FOR SAME.

© 2006 The Authors  
Journal compilation © 2006 Blackwell Publishing Ltd



## SITE INFORMATION

PROPERTY OWNER:	TERRANCE JONES	TOWER OWNER:	APC TOWERS
PHONE:	(760) 275-4880	ADDRESS:	8601 SIX FORKS RD, SUITE 250 RALEIGH, NC 27615
COUNTY:	SAN BERNARDINO	TOWER CO SITE ID:	CA-1374
ZONING JURISDICTION:	CITY OF NEEDLES	TOWER APP NUMBER:	—
ZONING DISTRICT:	C-3 COMMERCIAL	LATITUDE (NAD 83):	34° 51' 57.74" N
PARCEL NUMBER:	066016207	LONGITUDE (NAD 83):	114° 38' 07.81" W
OCCUPANCY GROUP:	U		
CONSTRUCTION TYPE:	II-B		
POWER COMPANY:	NEEDLES ELECTRIC DEPARTMENT		
TELEPHONE COMPANY:	FRONTIER		
LEASE AREA:	2500 SQFT		

## PROJECT TEAM

<u>RF ENGINEER:</u>	<u>ZONING:</u>	<u>CONSTRUCTION:</u>
-	EUKON GROUP 85 POST, SUITE 1000 IRVINE, CA 92618 CONTACT: JERRY AMBROSE PHONE: (805) 637-7407 EMAIL: jambrose@wireless01.com	-

<u>RF ENGINEER:</u>	<u>ZONING:</u>	<u>CONSTRUCTION:</u>
-	ELUKON GROUP 65 POST, SUITE 1000 IRVINE, CA 92618 CONTACT: JERRY AMBROSE PHONE: (805) 637-7407 EMAIL: jambrose@wireless01.com	-

SITE NUMBER: CA-1374  
SITE NAME: TBD



PROJECT: APC TOWERS  
SITE TYPE: MONOPOLE  
SITE ADDRESS: NATIONAL OLD TRAILS ROAD  
NEEDLES, CA 92363

## APPROVALS

10. *Journal of the American Medical Association*, 2000; 283: 2686-2692.

APPROVED BY:	DATE:
APC OPERATIONS: _____	
SAQ MANAGER: _____	
PROJECT MANAGER: _____	
ZONING VENDOR: _____	
LEASING VENDOR: _____	
ZONING MANAGER: _____	
PROPERTY OWNER: _____	

## PROJECT DESCRIPTION

- (1) PROPOSED 160'-0" HIGH MONOPOLE
- (1) PROPOSED METERING H-FRAME
- (1) PROPOSED UTILITY COMPANY TRANSFORMER
- (1) PROPOSED COMMUNITY FIBER VAULT
- (1) PROPOSED 8' HIGH CHAIN-LINK ENCLOSURE W/ PRIVACY SLATS
- (2) UTILITY TRENCHES

## SHEET INDEX

[illegible]

8601 SIX FORKS ROAD, SUITE 250  
RALEIGH, NC 27615  
WWW.APCTOWERS.COM



65 POST, SUITE 1000  
IRVINE, CA 92618  
TEL: (949) 553-8566  
[www.eukongroup.com](http://www.eukongroup.com)

NOT FOR  
CONSTRUCTION

IT IS A VIOLATION OF LAW FOR ANY PERSON,  
UNLESS THEY ARE ACTING UNDER THE DIRECTION  
OF THE LICENSED PROFESSIONAL ENGINEER,  
TO ALTER THIS DOCUMENT.

DRAWN BY:	UTILITIES CHECKED BY:	A&E CHECKED BY:
PG	GD	RB

## ZONING DRAWINGS

## SUBMITTALS

REV	DATE	DESCRIPTION
A	07/29/23	90% ZONING DRAWNGS
B	09/11/23	ZONING COMMENTS
C	11/08/23	ZONING COMMENTS

PROJECT INFORMATION

CA-1374

NATIONAL OLD TRAILS ROAD  
NEEDLES, CA 92363

SHEET TITLE

TITLE SHEET

SHEET NUMBER

T-1

## VICINITY MAP



## AERIAL VIEW

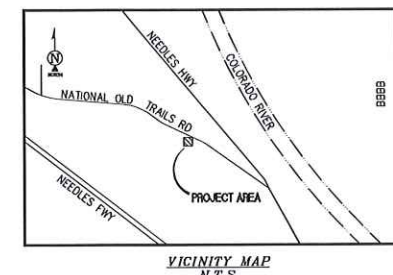
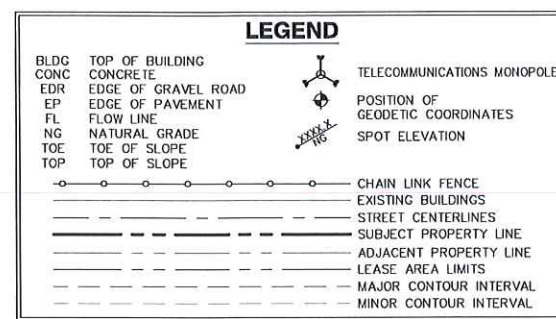
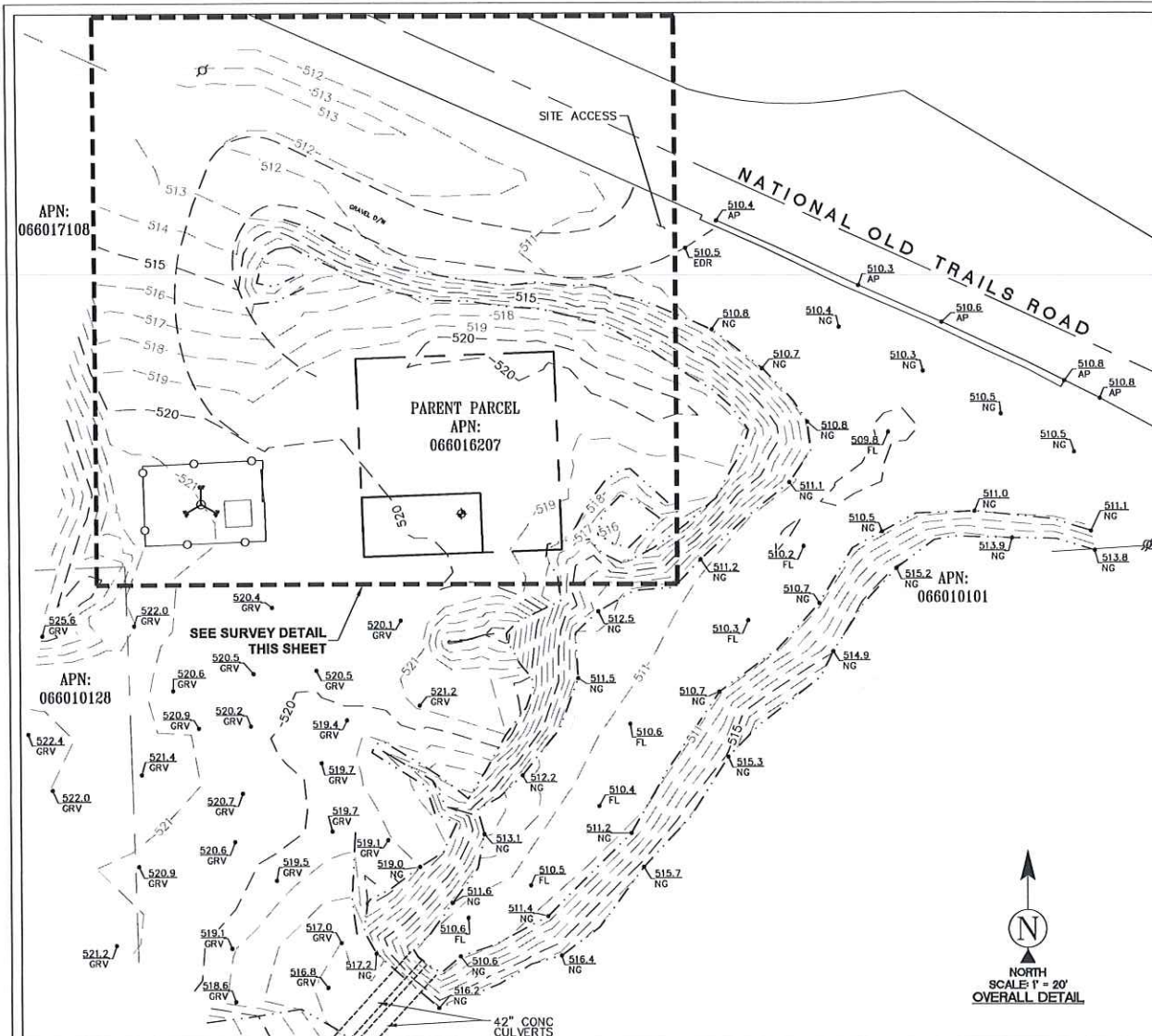


## DRIVING DIRECTIONS

DIRECTIONS FROM HARRY REID INTERNATIONAL AIRPORT AT 5757 WAYNE PROPOSEDTON BLVD, LAS VEGAS, NV 89119

- |   |  |
|---|--|
| 1. HEAD SOUTH ON PARADISE RD              | 12. TURN RIGHT ONTO NATIONAL OLD TRANSIT RD        |
| 2. FOLLOW SIGNS FOR I-215 SOUTH           | 13. ARRIVE AT NATIONAL OLD TRANSIT RD ON THE RIGHT |
| 3. MERGE ONTO I-215 SOUTH                 |  |
| 4. FOLLOW SIGNS FOR I-11 SOUTH            |  |
| 5. MERGE ONTO I-11 SOUTH                  |  |
| 6. FOLLOW SIGNS FOR US-95 SOUTH           |  |
| 7. MERGE ONTO US-95 SOUTH                 |  |
| 8. CONTINUE ON US-95 SOUTH                |  |
| 9. FOLLOW SIGNS FOR I-40 EAST             |  |
| 10. MERGE ONTO I-40 EAST                  |  |
| 11. TAKE EXIT 139 TOWARD RIVER RD CUT OFF |  |





**APC Towers**  
8601 SIX FORKS ROAD, SUITE 250  
RALEIGH, NC 27615  
PHONE: (919) 926-9838  
WWW.APCTOWERS.COM


PROJECT INFORMATION:  
**CL-1374**  
NATIONAL OLD TRAILS ROAD  
NEEDLES, CA 92363  
SAN BERNARDINO COUNTY

ORIGINAL ISSUE DATE:  
**07/16/2023**

REV.	DATE	DESCRIPTION	BY
0	07/16/23	PRELIM SUBMITTAL	RR

SURVEY PREPARED BY:  
  
428 MAIN STREET  
SUITE 206  
HUNTINGTON BEACH, CA 92648  
PH. (480) 659-4072  
www.ambitconsulting.us

CONSULTANT:  
DRAWN BY: ☐ RR ☐ NS ☐ APV.: ☐ XX

LICENSER:  
  
PATRICK B. DONOHOE  
P.L.S. NO. 9332

SHEET TITLE:  
**SITE SURVEY**  
SHEET NUMBER:  
**LS-1**

**SURVEY DATE**  
07/11/2023

**BASIS OF BEARING**  
BEARINGS SHOWN HEREON ARE BASED UPON THE CALIFORNIA ZONE FIVE STATE PLANE COORDINATE SYSTEM BASED ON THE NORTH AMERICAN DATUM OF 1983(2011). DETERMINED BY RAW STATIC GLOBAL POSITIONING SYSTEM EQUIPMENT ON THE NGS OPUS WEBSITE.

**BENCHMARK**  
PROJECT ELEVATIONS ESTABLISHED FROM GPS DERIVED ORTHOMETRIC HEIGHTS BY APPLICATION OF NGS "GEOID 18" MODELED SEPARATIONS TO ELLIPSOID HEIGHTS DETERMINED BY RAW STATIC GPS DATA PROCESSED ON THE NGS OPUS WEBSITE. ALL ELEVATIONS SHOWN HEREON ARE REFERENCED TO NAVD88.

**GRID-TO-GROUND SCALE FACTOR NOTE**  
ALL BEARINGS AND DISTANCES ARE BASED ON THE CALIFORNIA STATE ZONE FIVE STATE PLANE COORDINATE SYSTEM GRID. TO DERIVE GROUND DISTANCES DIVIDE BY 0.99992413

**FLOOD ZONE**  
THIS PROJECT APPEARS TO BE LOCATED WITHIN FLOOD ZONE "X". ACCORDING TO FEDERAL EMERGENCY MANAGEMENT AGENCY FLOOD INSURANCE RATE MAP(S), MAP ID #06071C5010H, DATED 08/28/2008

**UTILITY NOTES**  
SURVEYOR DOES NOT GUARANTEE THAT ALL UTILITIES ARE SHOWN OR THEIR LOCATIONS ARE DEFINITE. IT IS THE RESPONSIBILITY OF THE CONTRACTOR AND DEVELOPER TO CONTACT 811 AND ANY OTHER INVOLVED AGENCIES TO LOCATE ALL UTILITIES PRIOR TO CONSTRUCTION. REMOVAL, RELOCATION AND/OR REPLACEMENT IS THE RESPONSIBILITY OF THE CONTRACTOR.

**TITLE REPORT NOTE**  
THIS MAP WAS PREPARED WITHOUT THE BENEFIT OF A TITLE REPORT. THIS MAP IS SUBJECT TO ALL LEGAL EASEMENTS AND RIGHTS-OF-WAY, PUBLIC OR PRIVATE, THAT WOULD BE DISCLOSED IN SUCH TITLE REPORT.

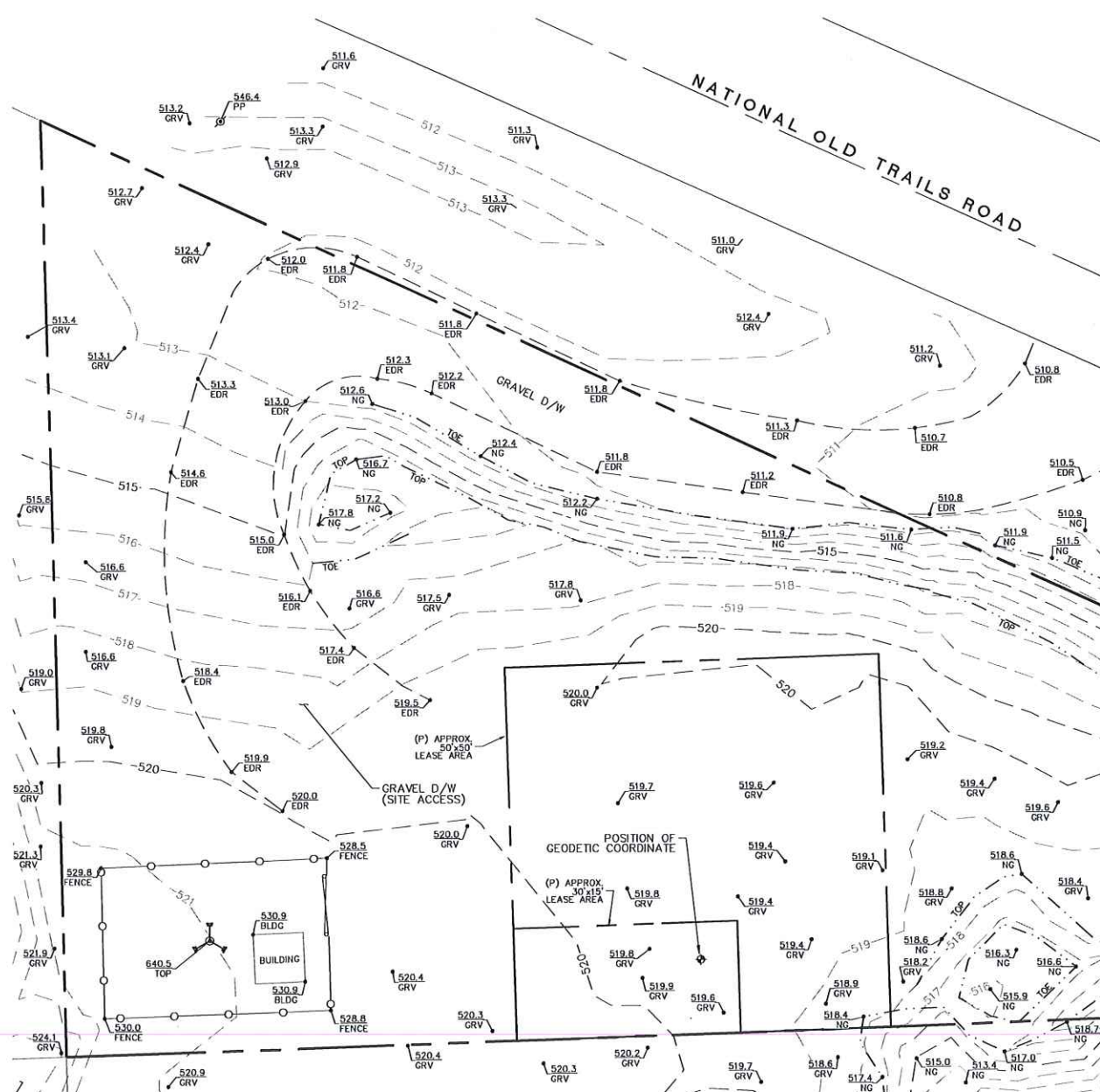
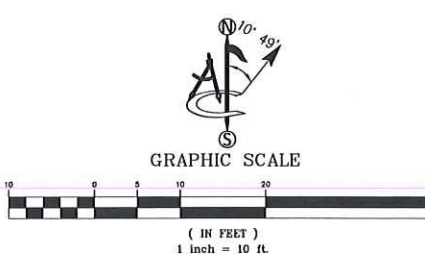
**LESSOR'S LEGAL DESCRIPTION**  
TO BE PROVIDED BY TITLE.

**SURVEYOR'S NOTES**  
CONTOURS DERIVED FROM DIRECT FIELD OBSERVATIONS AND FOLLOW THE CURRENT NATIONAL MAP STANDARDS FOR VERTICAL ACCURACY.

THE BOUNDARY SHOWN HEREON IS PLOTTED FROM RECORD INFORMATION AND DOES NOT CONSTITUTE A BOUNDARY SURVEY OF THE PROPERTY.

ALL DISTANCES SHOWN HEREON ARE GRID DISTANCES.

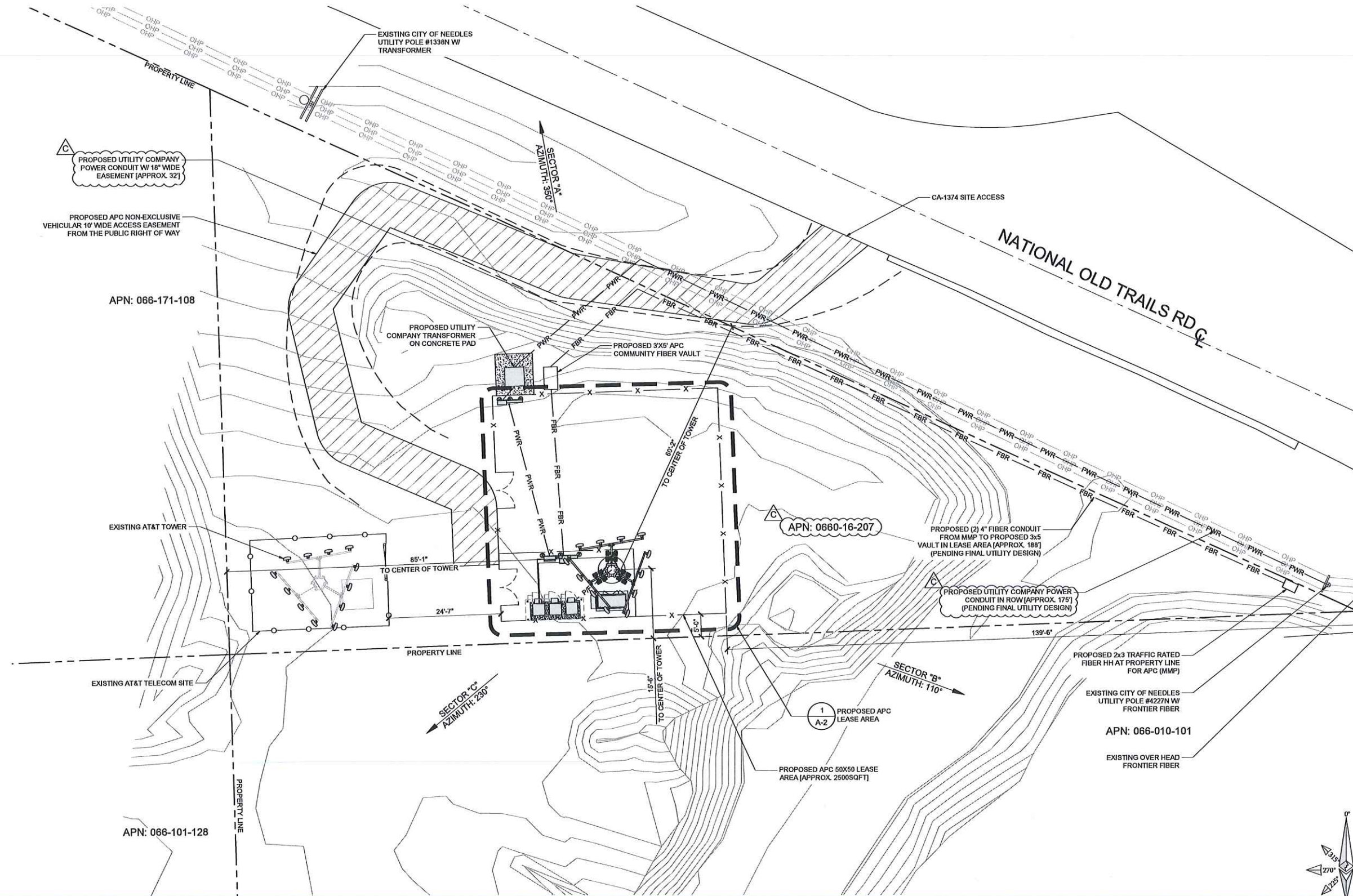
POSITION OF GEODETIC COORDINATES  
LATITUDE 34° 51' 57.74" (34.866040°) NORTH (NAD83)  
LONGITUDE 114° 38' 07.81" (114.635501°) WEST (NAD83)  
GROUND ELEVATION @ 519.5' (NAVD88)





NOTES:

1. IF DIMENSIONS SHOWN ON PLAN DO NOT SCALE CORRECTLY, CHECK FOR REDUCTION OR ENLARGEMENT FROM ORIGINAL PLANS.
2. CONTRACTOR SHALL FIELD VERIFY ALL DIMENSIONS.
3. UTILITY DESIGNS AND ROUTES ARE PRELIMINARY PENDING FINAL DESIGN BY UTILITY PROVIDER.
4. THIS SITE PLAN IS NOT INTENDED TO BE A LAND SURVEY.



**APC Towers**

8601 SIX FORKS ROAD, SUITE 250  
RALEIGH, NC 27615  
WWW.APCTOWERS.COM

**Eukon**  
an SFC Communications, Inc. Company

65 POST, SUITE 1000  
IRVINE, CA 92618  
TEL: (949) 553-8566  
WWW.EUKONGROUP.COM

**NOT FOR  
CONSTRUCTION**

IT IS A VIOLATION OF LAW FOR ANY PERSON,  
UNLESS THEY ARE ACTING UNDER THE DIRECTION  
OF THE LICENSED PROFESSIONAL ENGINEER,  
TO ALTER THIS DOCUMENT.

DRAWN BY:	UTILITIES CHECKED BY:	A&E CHECKED BY:
PG	GD	RB

**ZONING  
DRAWINGS**

SUBMITTALS

REV	DATE	DESCRIPTION
A	07/29/23	90% ZONING DRAWINGS
B	09/11/23	ZONING COMMENTS
C	11/08/23	ZONING COMMENTS

PROJECT INFORMATION

**CA-1374**

NATIONAL OLD TRAILS ROAD  
NEEDLES, CA 92363

SHEET TITLE

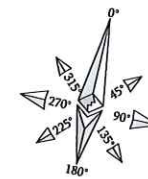
**SITE PLAN**

SHEET NUMBER

**A-1**



1. IF DIMENSIONS SHOWN ON PLAN DO NOT SCALE CORRECTLY, CHECK FOR REDUCTION OR ENLARGEMENT FROM ORIGINAL PLANS.
2. CONTRACTOR SHALL FIELD VERIFY ALL DIMENSIONS.



A-2

## COMPOUND PLAN

SCALE	2'	0	1'	2'	4'
3/8"=1'-0"					

1

EUKON AT&T\_900D\_MONOPOLE\_TEMPLATE\_V2\_11-18-22

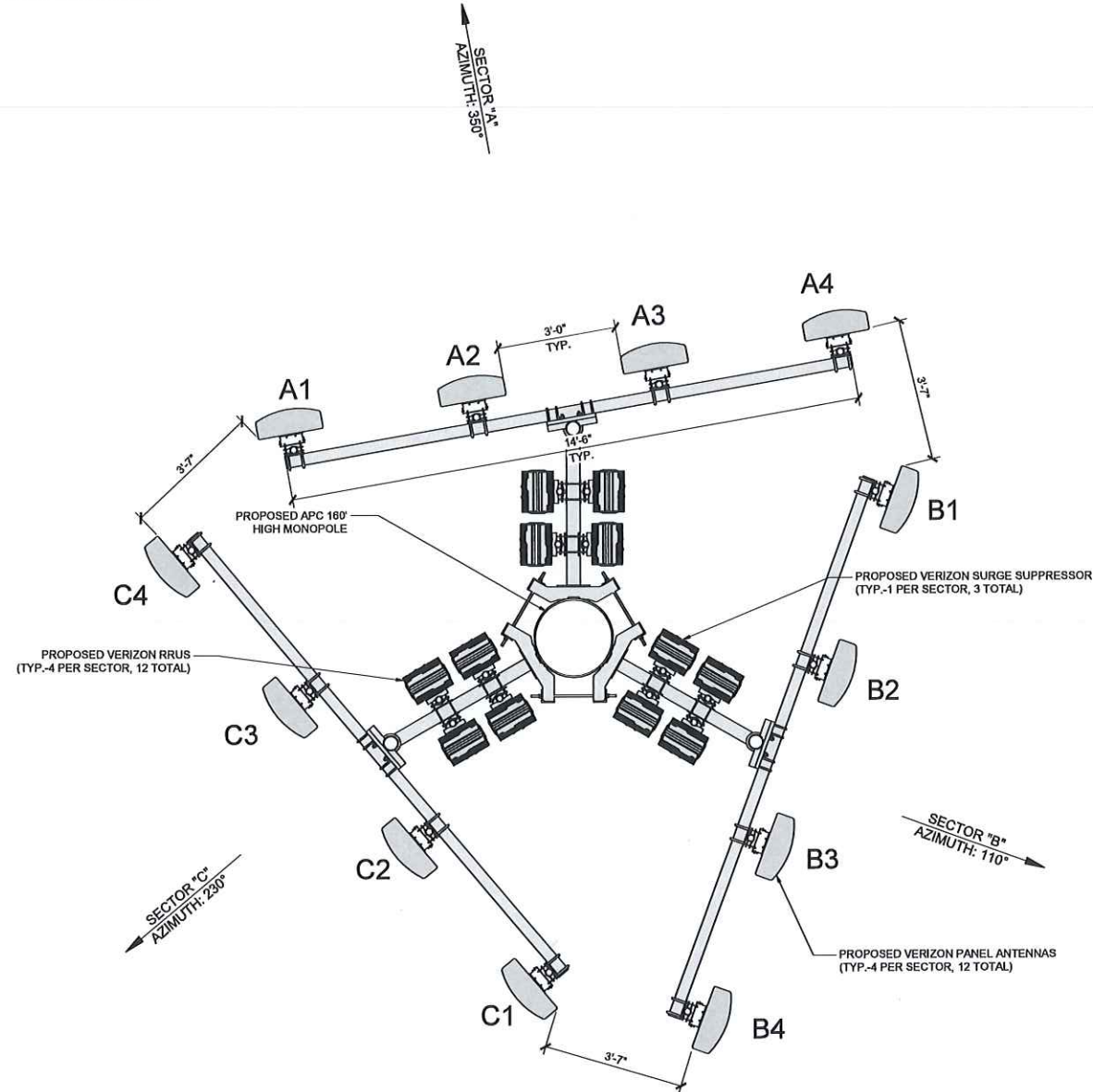
ANTENNA SCHEDULE (VERIFY WITH CURRENT RFDS)						
SECTOR	TECHNOLOGY	ANTENNA MODEL	ANTENNA SIZE	ANTENNA AZIMUTH	RAD CENTER	TRANSMISSION CABLE LENGTH
ALPHA SECTOR	A1	LTE	PANEL ANTENNA	8'-0"	350°	155'-0"
	A2	LTE	PANEL ANTENNA	8'-0"	350°	155'-0"
	A3	LTE	PANEL ANTENNA	8'-0"	350°	155'-0"
	A4	LTE	PANEL ANTENNA	8'-0"	350°	155'-0"
	-	-	-	-	-	-
BETA SECTOR	B1	LTE	PANEL ANTENNA	8'-0"	110°	155'-0"
	B2	LTE	PANEL ANTENNA	8'-0"	110°	155'-0"
	B3	LTE	PANEL ANTENNA	8'-0"	110°	155'-0"
	B4	LTE	PANEL ANTENNA	8'-0"	110°	155'-0"
	-	-	-	-	-	-
GAMMA SECTOR	C1	LTE	PANEL ANTENNA	8'-0"	230°	155'-0"
	C2	LTE	PANEL ANTENNA	8'-0"	230°	155'-0"
	C3	LTE	PANEL ANTENNA	8'-0"	230°	155'-0"
	C4	LTE	PANEL ANTENNA	8'-0"	230°	155'-0"
	-	-	-	-	-	-

REMOTE RADIO UNIT SCHEDULE					
SECTOR	RRU TYPE	RRU LOCATION (DISTANCE FROM ANTENNA)	MINIMUM CLEARANCES		
			ABOVE	BELOW	SIDES
ALPHA SECTOR	A1	(2) ERICSSON RRU (LTE)	±15'	16"	8" 0"
	A1	(2) ERICSSON RRU (LTE)	±15'	16"	8" 0"
	A2	(2) ERICSSON RRU (LTE)	±15'		
	A3	(2) ERICSSON RRU (LTE)	±15'		
	A4	(2) ERICSSON RRU (LTE)	±15'		
	A4	(2) ERICSSON RRU (LTE)	±15'		
	A5				
	A5				
	B1	(2) ERICSSON RRU (LTE)	±15'	16"	8" 0"
	B1	(2) ERICSSON RRU (LTE)	±15'	16"	8" 0"
BETA SECTOR	B2	(2) ERICSSON RRU (LTE)	±15'		
	B3	(2) ERICSSON RRU (LTE)	±15'		
	B4	(2) ERICSSON RRU (LTE)	±15'		
	B4	(2) ERICSSON RRU (LTE)	±15'		
	B5				
	B5				
GAMMA SECTOR	C1	(2) ERICSSON RRU (LTE)	±15'	16"	8" 0"
	C1	(2) ERICSSON RRU (LTE)	±15'	16"	8" 0"
	C2	(2) ERICSSON RRU (LTE)	±15'		
	C3	(2) ERICSSON RRU (LTE)	±15'		
	C4	(2) ERICSSON RRU (LTE)	±15'		
	C4	(2) ERICSSON RRU (LTE)	±15'		
	C5				
	C5				
	C5				
	C5				

SURGE SUPPRESSION SYSTEM SCHEDULE				
SYSTEM	MFR.	PART NUMBER	QTY	LOCATION
	RAYCAP	RVZDC-6627-PF-48	3	MOUNTED ON H-FRAME AT GRADE
	RAYCAP	RCMDC-3315-PF-48	3	MOUNTED ON PROPOSED FAUX-EUC

- NOTES TO CONTRACTOR:
- CONTRACTOR IS TO REFER TO T-MOBILE'S MOST CURRENT RADIO FREQUENCY DATA SHEET (RFDS) PRIOR TO CONSTRUCTION.
  - CABLE LENGTHS WERE DETERMINED BASED ON A VISUAL INSPECTION DURING SITE WALK. CONTRACTOR TO VERIFY ACTUAL LENGTH DURING PRE-CONSTRUCTION WALK.
  - CONTRACTOR TO USE ROSENBERGER FIBER LINE HANGER COMPONENTS (OR ENGINEER APPROVED EQUAL).
  - CONTRACTOR TO USE CABLES SPECIFIED (OR ENGINEER APPROVED EQUAL).

- NOTE:
- IF DIMENSIONS SHOWN ON PLAN DO NOT SCALE CORRECTLY, CHECK FOR REDUCTION OR ENLARGEMENT FROM ORIGINAL PLANS.
  - CONTRACTOR SHALL FIELD VERIFY ALL DIMENSIONS.
  - ANTENNA AND MW APC SPECIFICATIONS REFER TO ANTENNA SCHEDULE AND TO FINAL CONSTRUCTION RFDS FOR ALL RF DETAILS.



8601 SIX FORKS ROAD, SUITE 250  
RALEIGH, NC 27615  
WWW.APCTOWERS.COM



65 POST, SUITE 1000  
IRVINE, CA 92618  
TEL: (949) 553-8566  
WWW.EUKONGROUP.COM

NOT FOR  
CONSTRUCTION

IT IS A VIOLATION OF LAW FOR ANY PERSON, UNLESS THEY ARE ACTING UNDER THE DIRECTION OF THE LICENSED PROFESSIONAL ENGINEER, TO ALTER THIS DOCUMENT.

DRAWN BY:	UTILITIES CHECKED BY:	A&E CHECKED BY:
PG	GD	RB

## ZONING DRAWINGS

### SUBMITTALS

REV	DATE	DESCRIPTION
A	07/29/23	90% ZONING DRAWINGS
B	09/11/23	ZONING COMMENTS
C	11/06/23	ZONING COMMENTS

### PROJECT INFORMATION

CA-1374

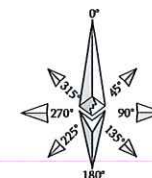
NATIONAL OLD TRAILS ROAD  
NEEDLES, CA 92363

### SHEET TITLE

ANTENNA PLAN AND  
SCHEDULE

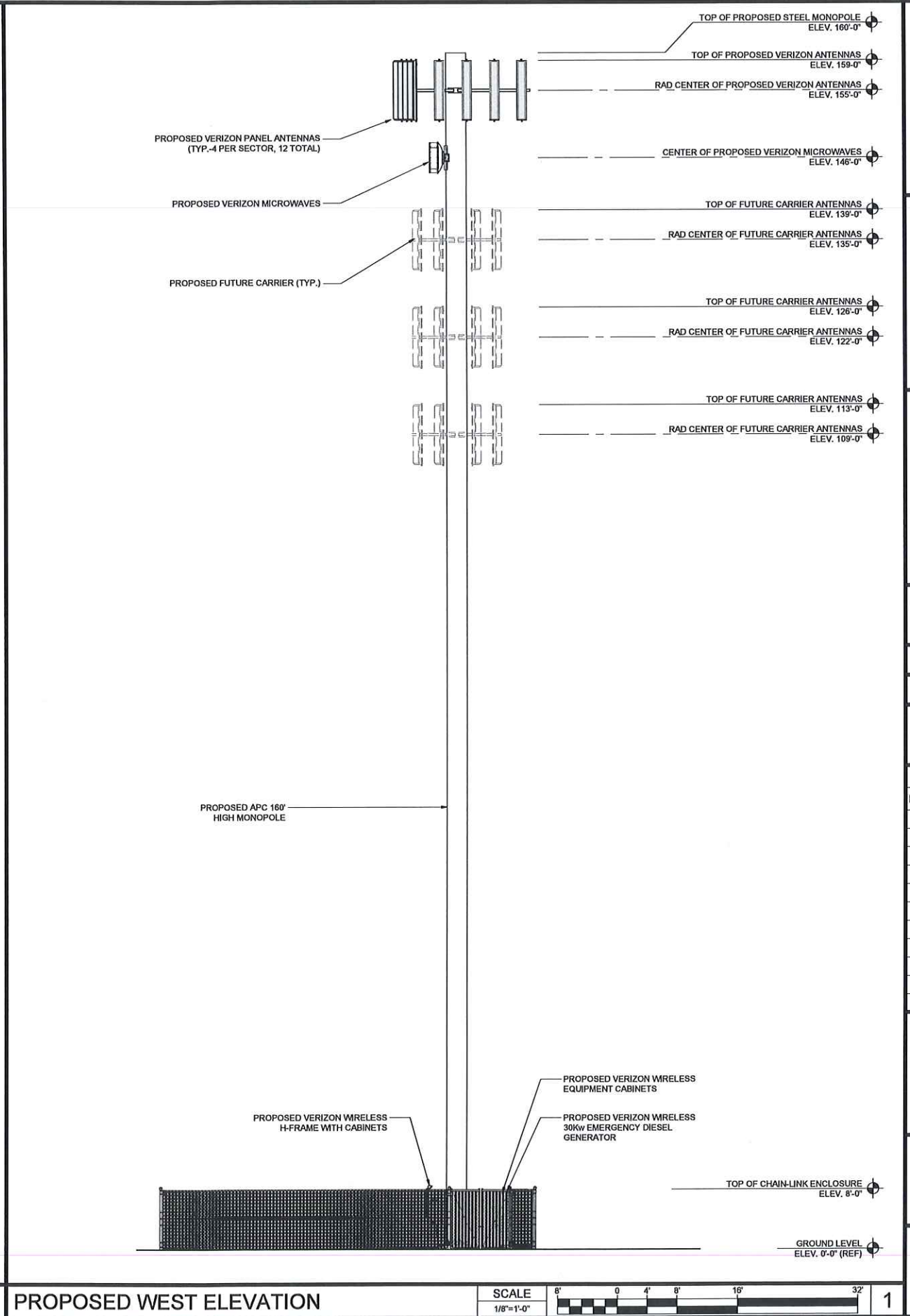
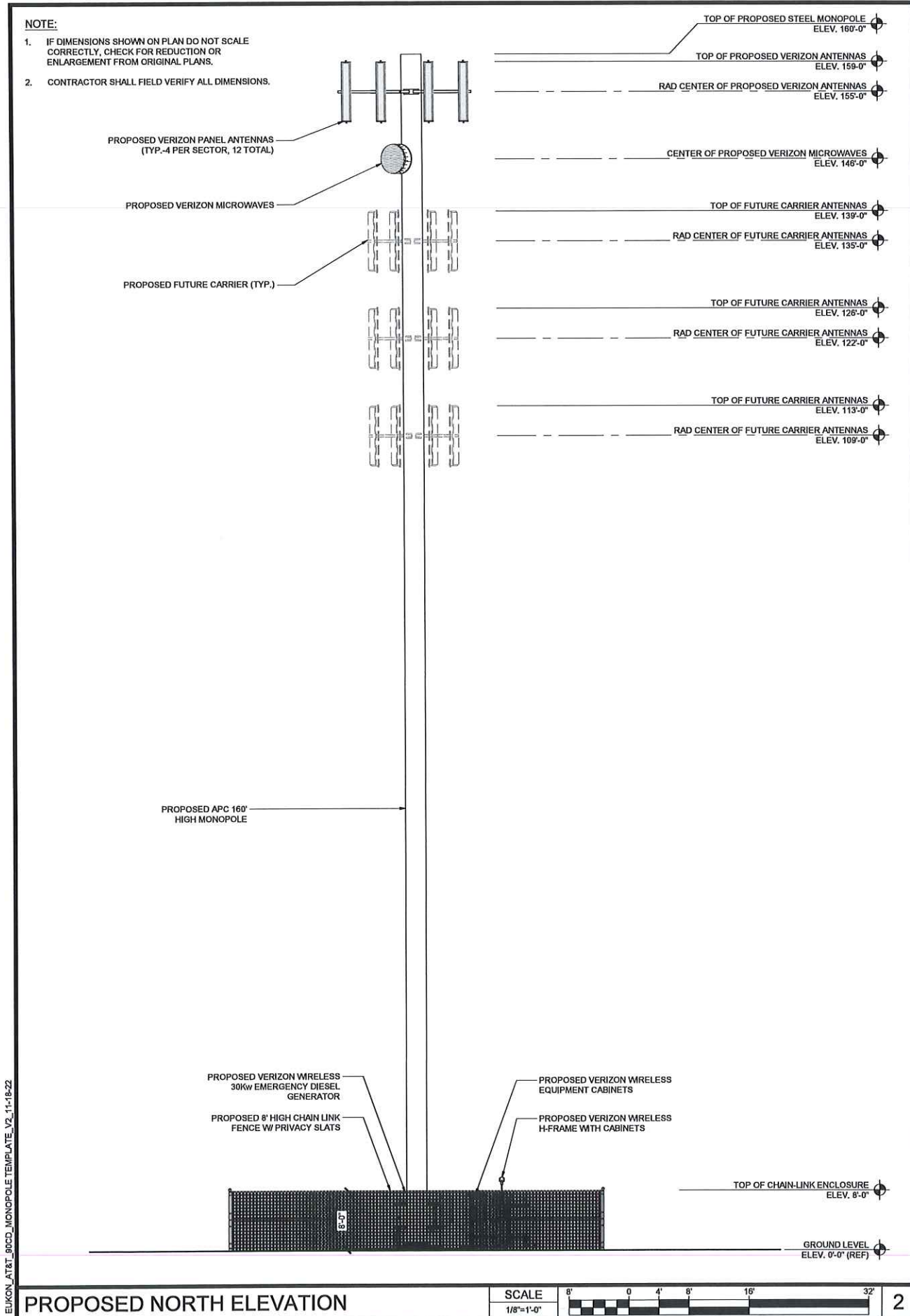
### SHEET NUMBER

A-3





EUKON\_AT&T\_900D\_MONOPOLE\_TEMPLATE\_V2\_11-18-22



8601 SIX FORKS ROAD, SUITE 250  
RALEIGH, NC 27615  
WWW.APCTOWERS.COM



65 POST, SUITE 1000  
IRVINE, CA 92618  
TEL: (949) 553-8566  
WWW.EUKONGROUP.COM

NOT FOR  
CONSTRUCTION

IT IS A VIOLATION OF LAW FOR ANY PERSON,  
UNLESS THEY ARE ACTING UNDER THE DIRECTION  
OF THE LICENSED PROFESSIONAL ENGINEER,  
TO ALTER THIS DOCUMENT.

DRAWN BY:	UTILITIES CHECKED BY:	A&E CHECKED BY:
PG	GD	RB

### ZONING DRAWINGS

SUBMITTALS		
REV	DATE	DESCRIPTION
A	07/29/23	90% ZONING DRAWINGS
B	09/11/23	ZONING COMMENTS
C	11/08/23	ZONING COMMENTS

### PROJECT INFORMATION

CA-1374

NATIONAL OLD TRAILS ROAD  
NEEDLES, CA 92363

### SHEET TITLE

ELEVATIONS

### SHEET NUMBER

A-4



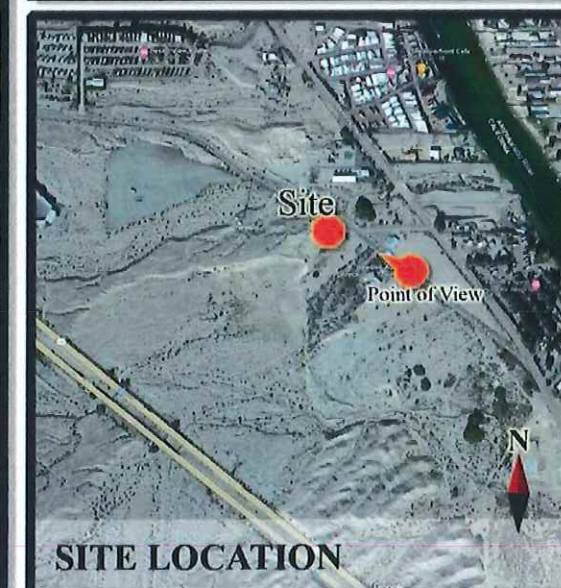
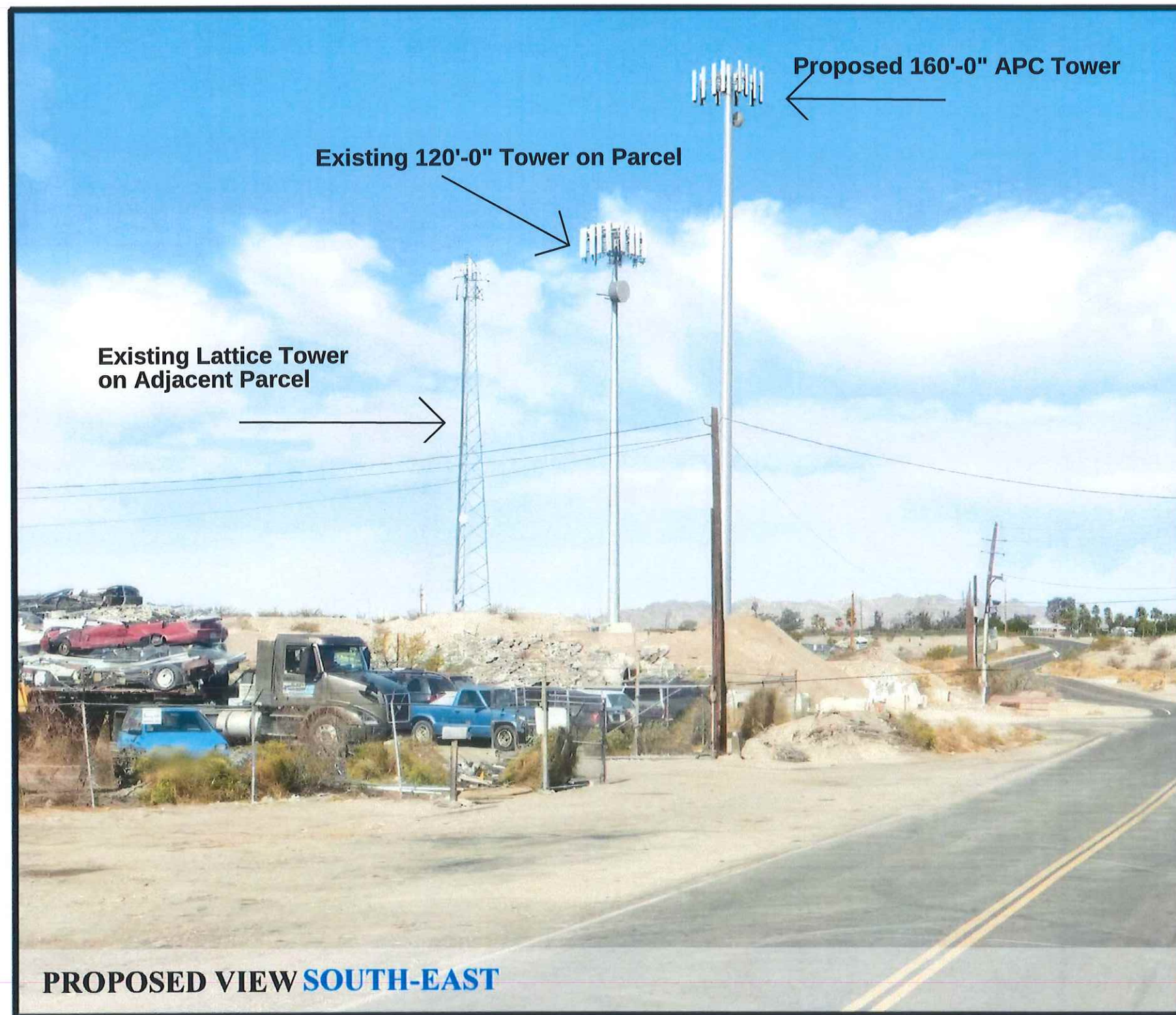


# CA-1374 NSB

National Old Trails Rd., Needles, CA 92363



Eukon Group  
65 Post, Suite 1000 - Irvine,  
CA, 92618 - (949) 553-8566



## SITE COORDINATES

Latitude: 34° 51' 57.74"

Longitude: -114° 38' 07.81"

SHEET NUMBER

1  
3



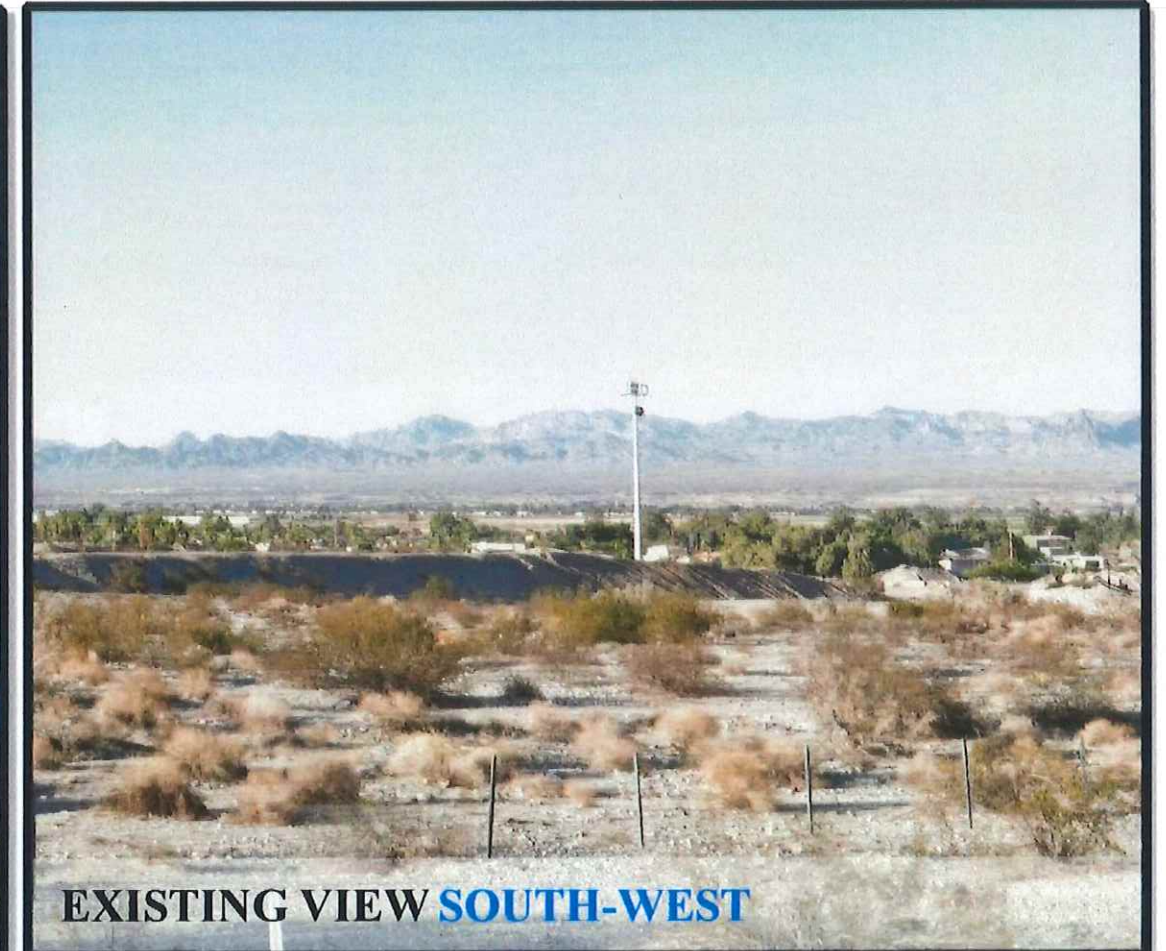


# CA-1374 NSB

National Old Trails Rd., Needles, CA 92363



Eukon Group  
65 Post, Suite 1000 - Irvine,  
CA, 92618 - (949) 553-8566



## SITE COORDINATES

Latitude: 34° 51' 57.74"  
Longitude: -114° 38' 07.81"

SHEET NUMBER

2  
3



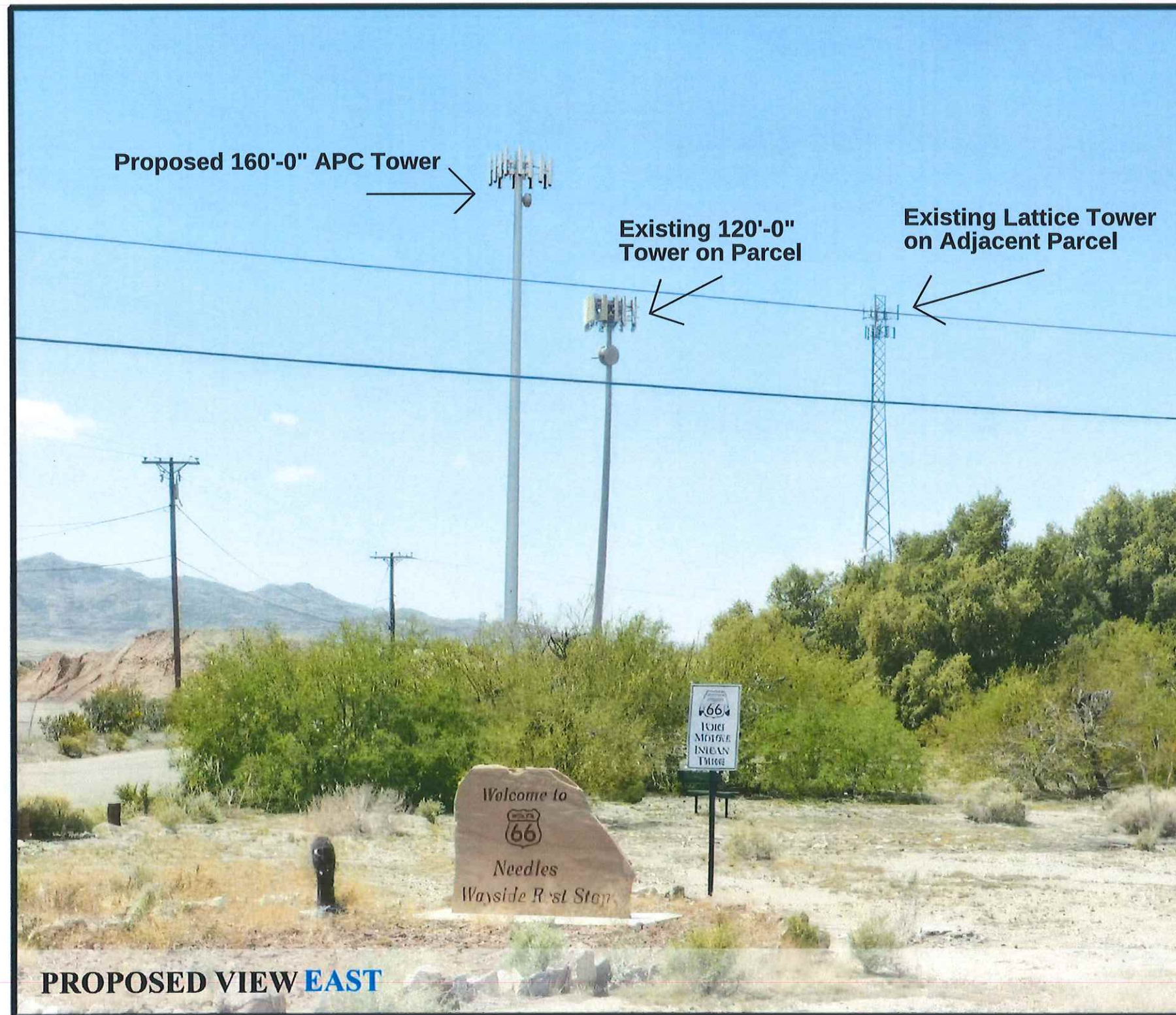


# CA-1374 NSB

National Old Trails Rd., Needles, CA 92363



Eukon Group  
65 Post, Suite 1000 - Irvine,  
CA, 92618 - (949) 553-8566



## SITE COORDINATES

Latitude: 34° 51' 57.74"  
Longitude: -114° 38' 07.81"

SHEET NUMBER

3  
3