



6165 W. Detroit St.
Chandler, AZ 85226
(602) 276-0406 (800) 528-8242
FAX: (480) 940-0313

QUOTE

BBBQ71385

Date Quoted 2/28/2025

EXPIRATION DATE 5/30/2025

**Due to extreme market volatility of raw materials, quotes are reviewed and revised after 30 days.
Products ordered for shipment after the expiration date on this quote will be adjusted to the price in
the quote valid at the time of the shipment.**

Quote To: Account Code: 918272

Ship To: Account Code: 918272

CITY OF NEEDLES CA

CITY OF NEEDLES CA

817 THIRD STREET
NEEDLES, CA 92363
US

817 THIRD STREET
NEEDLES, CA 92363
US

Mobile:

Phone:

Fax:

Email:

Project Title: City of Needles- EZ 1500 Quote

Bid Date:

Bid Number: City of Needles- EZ 1500 Quote

Project Start Date:

Ship Before: 5/30/2025

Quote Effective Dates: 3/1/2025 TO 5/30/2025

Terms: NET 30

F.O.B.: PPD- ADD FREIGHT

Ship Via: Truck/Common Carrier

Sales Group:

Quoted By: Jonathan Hungerford

Sales Office: WR4- Jonathan Hungerford

Estimated Time to Ship After Receipt of Order:

Customer: CITY OF NEEDLES CA

Quote Number: BBBQ71385

Project Title: City of Needles- EZ 1500 Quote

Date: 02-28-25

**SALES TAX EXEMPT CERTIFICATE MUST BE PROVIDED AT THE TIME OF ORDER OR SALES TAX WILL BE
ADDED TO YOUR ORDER**

Part #	Description	Unit	Qty.	Quote Price	Ext. Price
46500EB-SRC	EZ SERIES II, 1500 ELECTRIC DOUBLE PUMPER	EA	1	\$116,955.0000	\$116,955.0000
20014-SRC	3" PINTLE HITCH	EA	1	\$126.4000	\$126.4000
24183-SRC	SEVEN PIN ROUND CONNECTION	EA	1	\$64.0000	\$64.0000
20120-SRC	18" HITCH EXTENSION	EA	1	\$524.0000	\$524.0000
24516DPS-SRC	WORKLIGHTS, ARROWBAR, STROBE, CLASS 1	EA	1	\$3,516.0000	\$3,516.0000
24190K-SRC	OVERNIGHT HEATER 110V W/ US PLUG	EA	2	\$352.0000	\$704.0000
26058-SRC	10# FIRE EXTINGUISHER (MUST ORDER 26059 TO MOUNT)	EA	1	\$236.0000	\$236.0000
26059-SRC	FIRE EXTINGUISHER BRACKET	EA	1	\$84.0000	\$84.0000
26119-SRC	3/8" SAFETY HOOK W/ LATCH (2 REQUIRED)	EA	2	\$58.0000	\$116.0000
41259K-SRC	100# PROPANE TANK (USE 26098 TOOL BOX IF BOTH REQUIRED)	EA	1	\$415.0600	\$415.0600
41629-SRC	HAND WAND	EA	1	\$92.0000	\$92.0000
41930-SRC			1	\$520.0000	\$520.0000

03/04/25 13:09:46

We value your business.

Page 1 of 3

1 of 13

Customer:	CITY OF NEEDLES CA	Quote Number	BBBQ71385
Project Title:	City of Needles- EZ 1500 Quote	Date	02-28-25

SALES TAX EXEMPT CERTIFICATE MUST BE PROVIDED AT THE TIME OF ORDER OR SALES TAX WILL BE ADDED TO YOUR ORDER

Part #	Description	Unit	Qty.	Quote Price	Ext. Price
42743-SRC	GRAVITY FEED KIT	EA			
	SPARE TIRE KIT	EA	1	\$612.0000	\$612.0000
48120S-SRC	ENGINE COVER ASSY YANMAR	EA	1	\$2,800.0000	\$2,800.0000
	INSULATED				
45660-SRC	HEAT LANCE, HIGH VELOCITY	EA	1	\$2,764.0000	\$2,764.0000
	W/ 60' HOSE				
51399-SRC	AUTOLOADER (MUST ORDER A	EA	1	\$8,316.0000	\$8,316.0000
	HITCH EXT)				
27199-CA04	SQUEEGEE ASSEMBLY REV.C	EA	2	\$113.1500	\$226.3000
27245-CA04	COMPACT SQUEEGEE ASSEMBLY	EA	2	\$92.5000	\$185.0000
	REV.A				
34526-PM-CA04	POLYFLEX TYPE 4 MELTABLE	LB	6,300	\$0.6500	\$4,095.0000
	PACKAGING				

Sales Tax	\$11,032.18
Sub Total	\$142,350.7600
Shipping Charges	\$1,200.00
Total	\$154,582.9400

Due to extreme market volatility, all prices and availability are subject to change without notice, all quotes to be confirmed at time of order and subject to inventory status.

COMMENTS:

FOB Chandler, AZ

2 year warranty

Full training upon delivery of machine

For questions contact Jonathan Hungerford at (909)320-1531 or jonathan.hungerford@crafco.com

NOTE:**PAYMENT POLICY:**

A deposit of 50% of the purchase price is required on all equipment orders.
Payment of cash, wire transfer or cashier's check for equipment is required at the time of delivery. Personal or Company checks must be deposited and the equipment will not be released until the funds clear. (7-10 days is typical)

WARNING:

Products on this quote may be labeled in accordance with California Proposition 65.

For Terms and Conditions of purchases go to: <https://crafco.com/Terms-of-Sale.pdf> <https://crafco.com/Terms.pdf>

Quantities may be limited at Crafco's discretion.

Pricing and availability are subject to change without notice.

Pricing does not include applicable taxes. Tax exemption forms must be on file prior to invoicing. Unpaid sales tax will be reported to State and Local tax authorities. Extension is net after terms.

FOB DEFINITIONS:

PPA- Delivered; freight included.

PPD- Delivered; freight separate.

Pavement Preservation Products Restocking Policy**RETURN POLICY**

Crafco will only accept the return of products that have been authorized in writing in advance, and proof of purchase is required. Not all purchases are returnable. This is a Return Policy for non-warranty claims. Refer to the product data sheet for information about warranty and claims for warranty reimbursement.

All returns are subject to restocking fees.

All products returned must be in the original packaging and be in good and salable condition.

Crafco reserves the right to charge repackaging fees in addition to restocking fees.

The customer is responsible for all shipping costs of returned products.

Request information on the acceptability for returns for any specific product when ordering.

Non-Returnable Products

Not all products are returnable. Products that have a shelf life or are considered made to order, or special order may not be returned.

No used parts may be returned and any part or product that is non-standard or obsolete is not returnable.

Product	Return Status
Athletic Surfacing Products, Cure & Commercial Liquids, Equipment, Geocomposites, Paint, Sealcoat, and Silicone	Non-Returnable

Restocking Fees

All returnable products have a restocking fee if returned.

Product	Restocking Fee
Parts	15% of part purchase price
All Other Products	25% of product purchase price

How to Return an Item

1. To obtain authorization contact your customer service representative.
2. A written authorization will be faxed or emailed to you.
3. A copy of the Return Authorization must accompany the material being returned.

EZ Series II Melter/Applicator



The Most Productive Melter on the Market

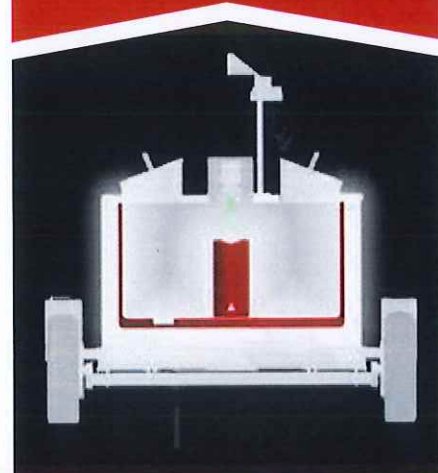
When you have miles of road to crack seal, you need a melter that won't slow you down. Crafcro's EZ Series II crack sealing melters combine safety, productivity, efficiency and reliability to supercharge your crew. Available in two sizes with eight different configurations and a host of productivity-boosting options, the EZ Series II is your solution to conquer even the biggest jobs.

BENEFITS

High-production

Rugged durability

High-efficiency heating tower
for fast melting





Setting the Standard for Pavement Preservation

Features

Safety

Your crew's safety is Crafcro's first priority. That's why Crafcro engineered the EZ Series II melters with safety features designed for convenience: a low-profile trailer and angled loading doors to reduce strain, curbside controls that minimize exposure to traffic, automatic agitator shutoff switches on the loading doors to prevent hot sealant splashes, an ergonomic hose and wand to reduce fatigue, and more. Choose from a variety of optional safety lights, and add the optional Work Area Camera to give your driver better rear visibility.

Productivity

The EZ Series II offers the largest capacity and material heat/recovery rate of any melter in its class, with an innovative heat tower in the center of the tank to improve melt rate. EZ Series II melters feature large 2" pumps capable of delivering 20 gallons per minute, with true on-demand pumping. The overhead sliding hose boom eliminates hurdles by maximizing your working radius, protecting hoses from damage, and reducing operator fatigue. A heat chamber on the back of the melter warms hoses and plumbing for a faster start to your day, while also enabling you to keep working when the temperature drops. EZ Series II melters are available with electric heated hoses, and our larger 1500-liter melter can be ordered as a double pumper, giving you an independent second hose for twice the output and an increased work area of 760 sq. ft.

Efficiency

EZ Series II melters are engineered to make the most of your time and resources. Powerful Tier 4 diesel engines conserve fuel to run all day while keeping emissions under control. A heat transfer tower in the center of the oil-jacketed double boiler tank increases the heating surface area for 95% heat efficiency to significantly speed up material melting and recovery. Powerful bi-directional agitation paddles ensure even heat and mixing. And the true on-demand pumping system saves fuel while also reducing wasted sealant. On our double pumper units, the two pumps run independently, with adjustable flow rates for different operators.

Reliability

A tool is only useful when it works, so Crafcro makes no compromises on reliability – starting with quality materials. Our heavy-duty trailers are constructed from open steel channel to minimize the risk of rust. Crafcro builds all sealant hoses in-house to ensure quality and repairability. The on-demand pumping system cuts wear-and-tear to reduce maintenance downtime. Our automatic interlocking controls ensure all functions engage properly to protect your melter from damage, while the accessible control panel offers easy monitoring of machine functions. And Crafcro never stops testing and refining our designs in response to real-world challenges. Every Crafcro machine is backed by our dedicated customer service and industry-leading two-year warranty, so you can have confidence long after your purchase.



Streamlined Safety Solutions

Choose from several options to boost production, extend working time and increase the safety of your crew.

A wide range of equipment lights are available to direct traffic, help crew stand out and extend working hours. The Work Area Camera provides the driver with a clear view behind the melter, helping prevent accidents and improving crew efficiency.

Additional options

- Autoloader
- Overnight Heaters
- Hitch Extension
- Engine Cover
- Spare Tire & Mount
- Tool Box
- Locking Battery Box
- Fire Extinguisher
- And More

STANDARD



The **Integrated Operator Control System** manages the entire unit, housing gauges, switches, and engine controls within the control box while the digital engine controller regulates all functions of the machine: automatic engine safety shutdowns, lock out to prevent unsafe or improper operation of agitation, pumps, hose and wand, and the burner.

STANDARD*



The **Heated Hose** features rapid material heating and extensive maneuverability. With a 360° swivel, protective sleeve, and the only field-repairable components in the market, it ensures uninterrupted performance and ease of maintenance, making it a reliable choice for any operation.

*Standard on Electric Base Models

OPTIONAL



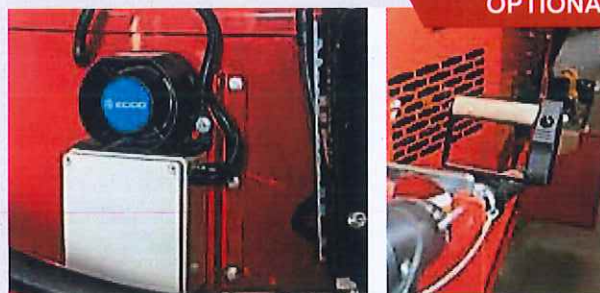
The **Autoloader**, designed for easy installation and efficient sealant block conveyance from a tow vehicle to the melter, keeps the operator safely away from hot sealant. Featuring weather-proof switches, a splash-resistant loading tower, and waterproof electrical enclosures, it ensures safety and reliability while enhancing operational efficiency without equipment modifications.

OPTIONAL



Illuminate your work site and boost safety with **Class I or II Equipment Lights**. Designed for maximum visibility, these lights enhance night work, warn drivers, and direct traffic. With durable construction and easy installation, they prioritize crew safety, ensuring peace of mind during operations.

OPTIONAL



The **Driver Alert System** enables seamless communication between crew members and the melter operator. Its high-pitched horn, activated with a push of a button, signals instructions to move forward, stop, or adjust speed. Key features include adaptive sound output, wireless operation, waterproof design, adjustable transmitter location and easy installation.

OPTIONAL



The **Work Area Camera System** enhances safety and efficiency by providing real-time visibility to the driver towing the melter. With a 5" LED monitor, waterproof backup camera with telescoping mast, and instant wireless pairing, it ensures a clear view of the work area without leaving the cab.

Configurations

To start designing the machine that meets your unique needs, choose your capacity (1000 or 1500 liters) and hose type (standard or electric heated). The EZ Series II 1000 is also available with an onboard 100cfm compressor, while the EZ Series II 1500 can be ordered as a double pumper with two independent hoses.

EZ Series II 1000

(1000 liters / 265 gallons capacity)

The EZ Series II 1000 is available with a standard (non-heated) or electric heated hose, as well as an onboard 100cfm compressor.

Standard Base
(non-electric hose)

Standard Base with Compressor
(non-electric hose)

Electric Base
(electric hose)

Electric Base with Compressor
(electric hose)



Shown with optional hitch extension..

EZ Series II 1500

(1500 liters / 396 gallons capacity)

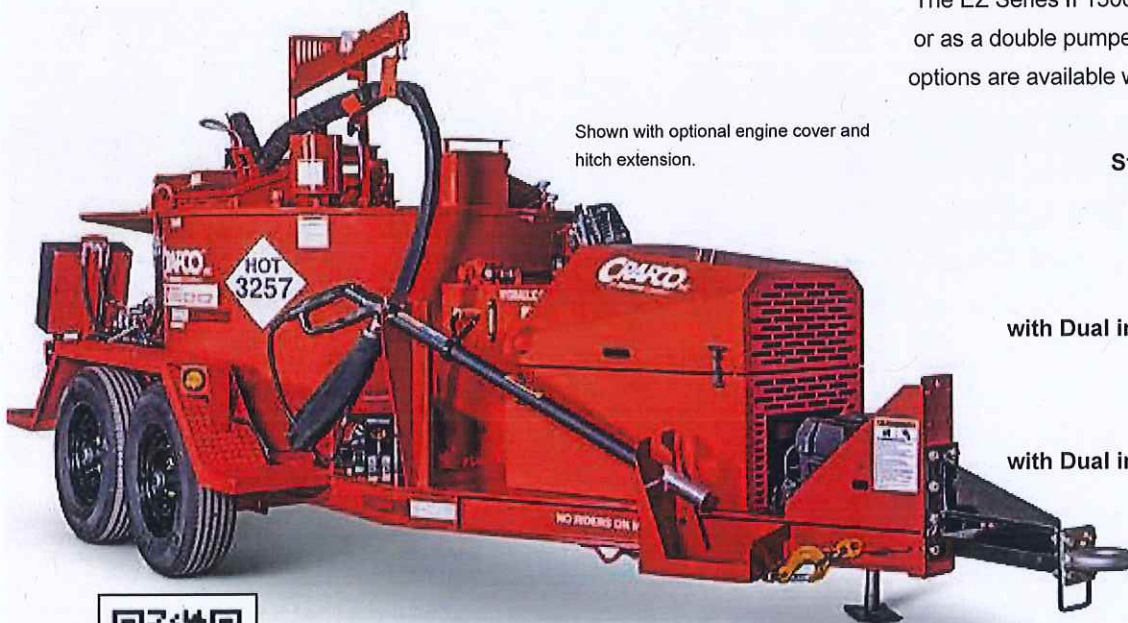
The EZ Series II 1500 can be ordered with a single hose, or as a double pumper with two independent hoses. Both options are available with standard (non-heated) hoses or electric heated hoses.

Standard Base (non-electric hose)

Electric Base (electric hose)

Double Pumper Standard Base
with Dual independent Pumps and Controls
(non-electric hoses)

Double Pumper Electric Base
with Dual independent Pumps and Controls
(electric hoses)



Shown with optional engine cover and hitch extension.



Use this QR code for a full side-by-side comparison of the EZ Series II specifications.

Engineered Tools

Sealing Tips & Material Handling Tools



Drip Stopper

Use with EZ Series sealing tip. Stops sealant drip once wand trigger is released.

Tip Adapter - #27114

Duckbill Valve - #50270

Shroud - Tip Adapter - #27115



Swivel Applicator

Use with EZ Series Melter with or without Drip Stopper.

3" Swivel Applicator - #27120

4" Swivel Applicator - #27130



Duckbill - #50270

Use with EZ Series Melter wands to prevent dripping of material.



Applicator Disk

Used for overbanding, great labor saver.

3" Disk Assembly - #27162

4" Disk Assembly - #27163

6" Disk Assembly - #27164



Round Sealing Tip

Multi-purpose random cracks and joints.

Use with a squeegee for most applications.

Sealing tip assembly 3/8" - #27170

Sealing tip assembly 1/2" - #27171



Sealing Foot/Flush

Used for random asphalt and concrete cracks.

Sealing tip/ft assembly

1/4" flush - #27154

Sealing tip/ft assembly

3/8" flush - #27155



Sealing Foot/Protruded

Used for straight asphalt and concrete joints.

Sealing tip/ft assembly

1/4" protruding - #27159

Sealing tip/ft assembly

3/8" protruding - #27160



Joint Sealing Tip

Use for straight asphalt and concrete joints.

Sealing tip assembly 1/4" - #27146

Sealing tip assembly 3/8" - #27147



Pour Pot with Wheels - #40200

Use to apply a uniform band of sealant to a crack or joint. Wheeled for ease of use.

Gravity feed with shut off lever.



Hand Held Pour Pot - #40201

For application of thin crack sealant to a joint or crack. Gravity feed with shut off lever.



Heavy Duty Squeegee

w/ Aluminum Handle - #27199

Use for leveling crack sealant and where a sealant over band is recommended.

Replacement Blade - #27195

4" x 18" x 3/8"



Heavy Duty Compact Squeegee

w/ Aluminum Handle - #27245

w/ Wooden Handle - #27245W

Use for leveling crack sealant and where a sealant over band is recommended.

Replacement Blade - #27241

2-1/2" x 17" x 3/8"



Detack

An economical, biodegradable liquid from Crafcro that eliminates sealant tack when sprayed onto freshly applied hot pour sealant.

©April 2024 Crafcro, Inc.

Sourcwell

Awarded Contract

Contract #080521-GFC

602-276-0406

sales@crafcro.com

crafcro.com

CRAFCO
INC
PRESERVATION PRODUCTS

Crack Sealants

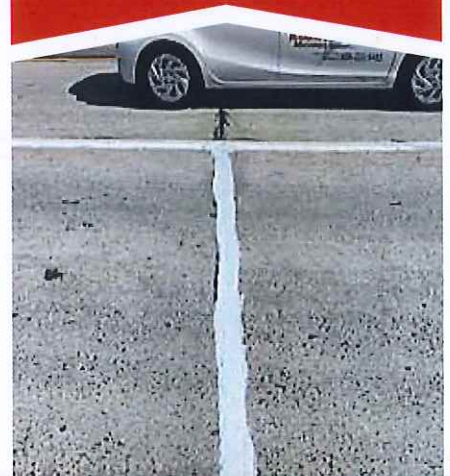


Save Your Pavement

Independent studies have shown for decades that crack sealing is the most cost-effective method of pavement preservation, prolonging service life well beyond that of untreated pavement. Crafco helped pioneer the pavement preservation industry nearly 50 years ago, and we've never stopped developing and refining our sealants to provide the best quality and performance. With an extensive line of specialized sealants and legendary service, Crafco is the most trusted name in crack sealing.

BENEFITS

- Prevent potholes
- Stop alligator cracking
- Prevent moisture from entering the subbase
- Prolong pavement life



A red crack sealing machine is shown from a rear perspective, applying a white sealant into a long, straight crack in an asphalt road. The machine has a hopper on top and a long nozzle extending over the crack. The road surface is dark asphalt, and the sky is clear blue. A yellow arrow sign is visible on the left side of the road in the background.

Why Crack Seal?

Cracks are inevitable, even for the highest-quality pavements. Left untreated, about 75 percent of asphalt cracks become potholes within three years. Crack sealing prevents infiltration of moisture and incompressible debris that lead to further deterioration. In certain conditions like a harsh winter, this damage can happen in a matter of months.

On roads, cracks degrade ride quality and lead to potholes. In pedestrian areas, cracks can present a tripping hazard. And in high-performance environments like airport runways, deterioration can endanger lives. Crack sealing stops those problems before they start, preventing the need for more costly and time-consuming repairs. Studies have shown that for every \$1.00 spent on crack sealing, \$4.00 or more is saved in rehabilitation cost. Crack sealing also boosts the effectiveness of other surface treatments such as sealcoating.

Sealant Selection

The right sealant makes all the difference. Choosing a sealant matched to your specific climate, pavement condition and intended use extends the service life of sealant to around 5-7 years in most cases. Crafcro helped develop many of the industry standards for crack sealing, and our sealants meet the relevant specifications set by ASTM and other organizations.

Your Crafcro representative can help you choose the right sealant for your application, but here are the basics:

Climate

Sealants must stretch and rebound as the road moves from thermal expansion and contraction. Your sealant should stay pliant in the winter without cracking but shouldn't become too soft in the summer heat. Selecting the right sealant for your climate is crucial.

Pavement Condition

Pavements with a high-volume of fatigue cracking can further ravel if repaired with a highly elastic crack sealant, compromising the waterproof seal. Crafcro manufactures performance crack fillers designed to accommodate pavements in fair to poor condition.

Intended Use

Parking lots and pedestrian areas present a special challenge for crack sealant due to low-speed vehicle traffic and foot traffic. Sealants used in these areas must resist tearing under twisting tires and must not stick to tires or shoes.

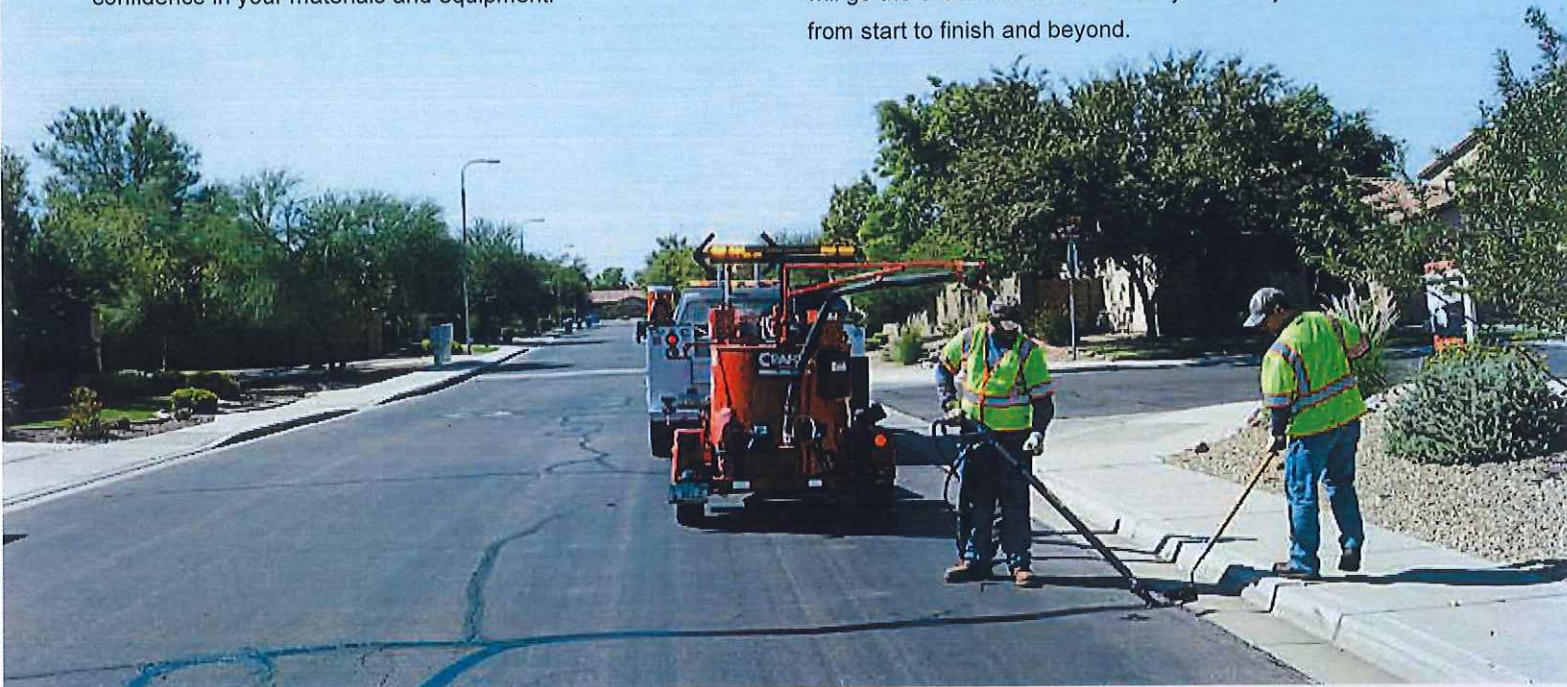
There may be other factors to consider, such as pavement slope, so consult your Crafcro representative for expert help choosing the right sealant for your application.

Why Crafcó?

Dedicated to Quality, Innovation and Service

We know that "good enough" is never good enough, so we never rest on our laurels. Every batch of Crafcó sealant gets tested twice for quality and adherence to ASTM specifications. Our team of sealant engineers continually develops and tests new formulations to maximize performance. And our engineering team continually refines our equipment to maximize productivity, ease of use and safety. Our goal is to provide the highest quality and performance on the market, so you can have total confidence in your materials and equipment.

With Crafcó, you get more than a supplier; you get a partner dedicated to your success. Whether you're a state DOT or a small municipality, a multi-state contractor or just one person in a pickup truck, Crafcó knows your time is valuable and your job is hard even when things go right. That's why we're committed to outstanding customer service – to providing useful solutions and building a strong relationship that works for you. Our experienced sales, customer support and Supply Center staff will go the extra mile to make sure your next job is a success, from start to finish and beyond.



Meltable Packaging

Crafcó's PLEXI-melt and NoBox meltable packaging saves you time, labor, and logistical headaches – which ultimately saves you money. Say goodbye to opening boxes, taking the time to break them down, and then finding a place to recycle them. Available for Crafcó sealants and mastics, our meltable packaging goes right into your Crafcó melter, dissolving completely without affecting sealant performance.

Benefits

- Avoids cumbersome cardboard waste
- Eliminates labor of opening and breaking down boxes
- Takes up less space; more convenient to transport and store
- Melts quickly and completely, with no effect on performance
- Avoids potential clogging issues of foam-based meltable packaging



View the chart below to see the wide variety of sealants available for every need. Your CrafcO representative will help you determine the optimal sealant to ensure success on your next project.

Sealant Selection Guide

PART NUMBER	PRODUCT NAME	HEAT TYPE		ASTM				AASHTO				Fed	FAA	SPECIALTY				OTHER SPECS					
		DIRECT FIRE	OIL JACKETED	D6690 TYPE I	D6690 TYPE II	D 6690 TYPE III	D 6690 TYPE IV	D 5078	D 5895	M324 TYPE I (M 173)	M324 TYPE II (M 301)	M324 TYPE III (M 173)	M324 TYPE IV (M 173)	MODIFIED AASHTO	SS-S164	SS-S1401C	P 805		PARKING LOT	RECYCLED RUBBER	FIBERIZED	WATERPROOFING	ADHESIVE
34200 - Parking Lot Sealant		•																•					
34201 - RoadSaver 201		•	•	•					•	•				•		•		•					
34202 - Parking Lot Sealant Type 1		•																•					
34211 - Roadsaver 211		•	•						•					•									
34221 - RoadSaver 221		•	•	•					•	•				•		•							
34222 - RoadSaver 222		•	•	•	•				•	•	•			•	•	•							
34231 - RoadSaver 231		•				•		•				•											LOW MODULUS
34232 - Asphalt Rubber Type 2		•					•											•					
34234 - Asphalt Rubber Type 4		•																•					
34241 - Asphalt Rubber Plus		•	•						•				•					•					
34244 - Asphalt Rubber Plus Type 2		•	•						•			•	•					•					
34250 - PolyFiber Type 3		•																	•				CRAFCO SPECIFICATION
34251 - PolyFiber Type 4		•																	•				CRAFCO SPECIFICATION
34515 - RoadSaver 515		•	•						•			•	•										
34516 - PolyFlex Type 1		•																•					CRAFCO SPECIFICATION
34517 - CrafcO DF	•	•																					CRAFCO SPECIFICATION
34518 - PolyFlex Type 2		•																•					CRAFCO SPECIFICATION
34519 - Fiber Asphalt		•																	•				CRAFCO SPECIFICATION
34521 - PolyFlex Type 3		•																•					CRAFCO SPECIFICATION
34522 - RoadSaver 522		•																					LOW MODULUS, CRAFCO SPECIFICATION
34524 - Pavement Joint Adhesive		•																		•	•		CRAFCO SPECIFICATION
34526 - PloyFlex Type 4		•																•					CRAFCO SPECIFICATION
34532 - SuperFlex	•	•																•					CRAFCO SPECIFICATION
34533 - SuperFlex HT	•	•																•					CRAFCO SPECIFICATION
34534 - RoadSaver 534		•	•	•					•	•				•		•							LOW TACK
34535 - Roadsaver 515 MN		•	•											•									MNDOT 3723-2
34543 - RoadSaver Low Tack		•																•					CRAFCO SPECIFICATION
34546 - RoadSaver Low Tack Type 2		•																•					CRAFCO SPECIFICATION

All CrafcO products meet or exceed the specifications listed.

©April 2024 CrafcO, Inc.