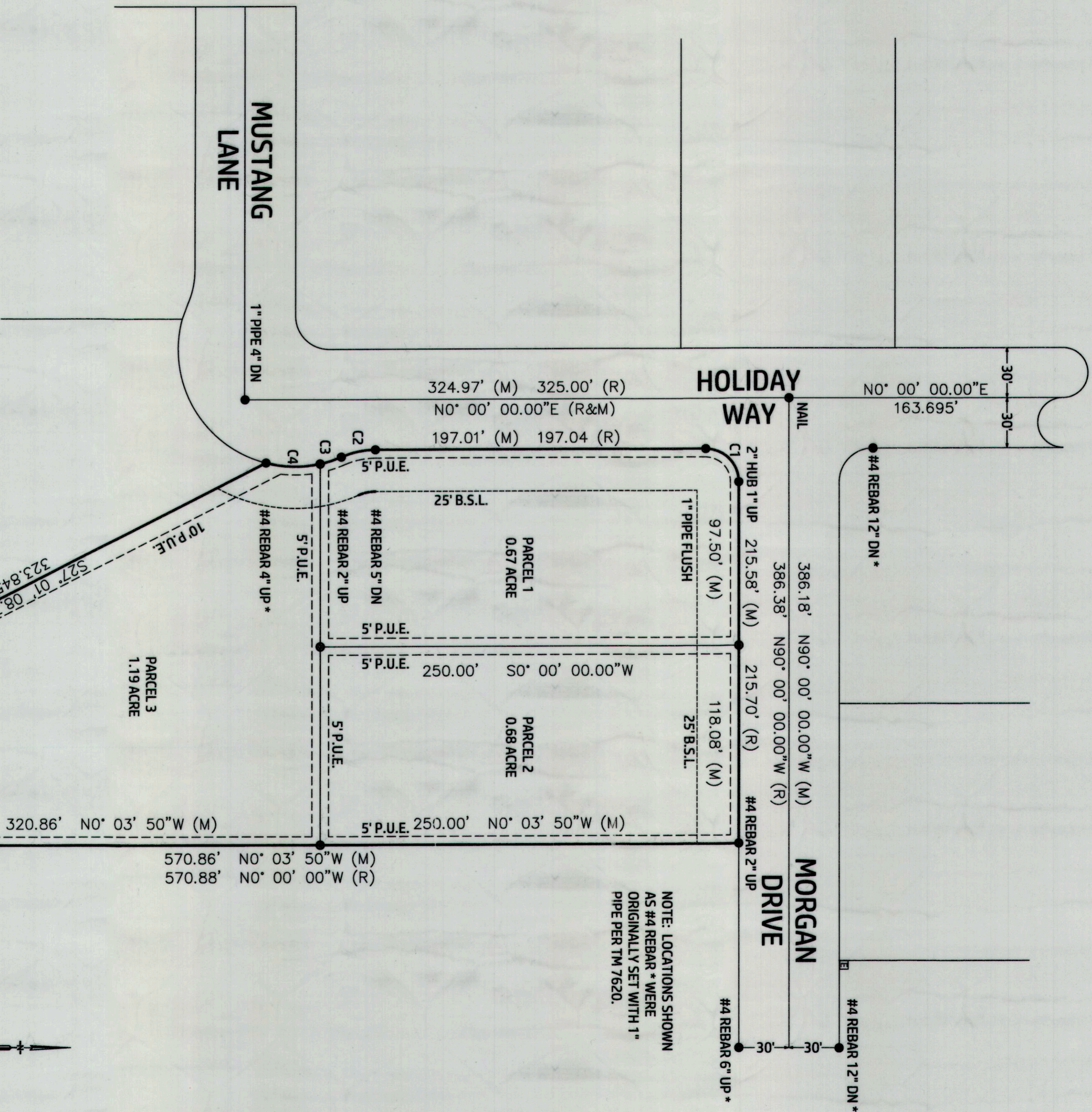


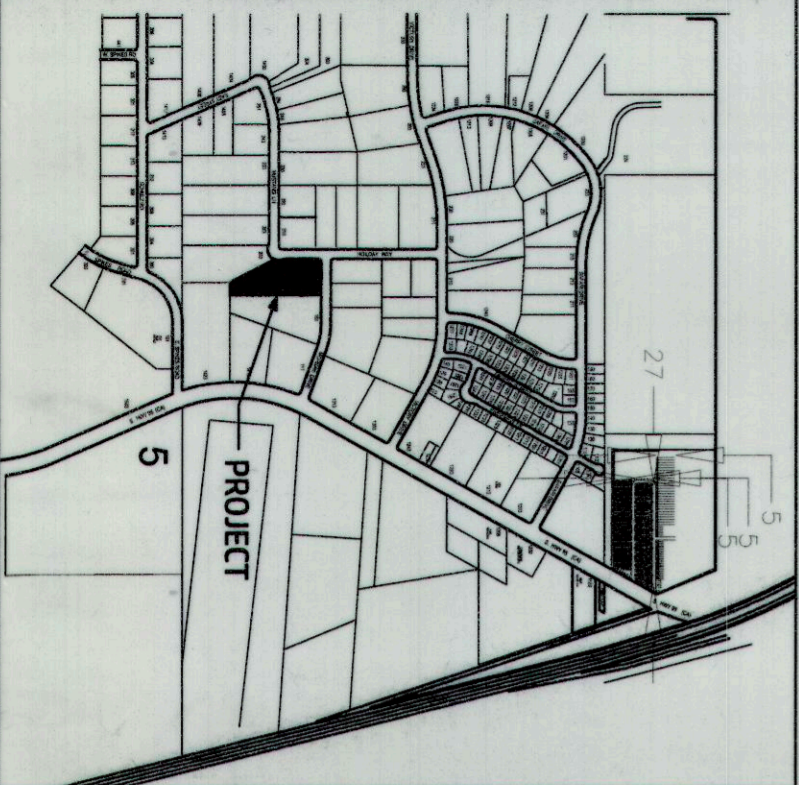
PARCEL MAP NO. 20989

A DIVISION OF THE LOT 45 OF TRACT MAP NO. 7620 RECORDED IN BOOK 98, PAGES 70 - 76
 OF THE OFFICIAL RECORDS OF THE COUNTY OF SAN BERNARDINO
 WITHIN THE NORTHWEST QUARTER OF SECTION 5,
 TOWNSHIP 8 NORTH, RANGE 23 EAST, SAN BERNARDINO BASE AND MERIDIAN,
 IN THE CITY OF NEEDLES, COUNTY OF SAN BERNARDINO, STATE OF CALIFORNIA
 JULY, 2025



CURVE	ANGLE	LENGTH	RADIUS	CB
C1	90°00'00"	31.42'	20'	MASONRY
C2	23°33'23"	20.56'	50'	N11°46'41"W
C3	11°12'23"	13.69'	70'	N17°0'11"W
C4	28°47'58"	32.74'	70'	N01°02'59"E

VICINITY MAP



SURVEYOR'S NOTES:

- INDICATES SET 1/2" REBAR CAP LS 6119(MB 98 / PP70-76)
- INDICATES FOUND MONUMENT AS NOTED
- (R) INDICATES RECORD DATA FROM TM 7620
- (M) INDICATES MEASURED DATA
- (C) INDICATES CALCULATED DATA

PROPERTY IS ZONED R-2

BASIS OF BEARING:
 THE CENTERLINE OF HOLIDAY WAY AS SHOWN ON TRACT
 MAP 7620 (MAP BOOK 98/70) BEING N00° 00'00"E.

NOTE: LOCATIONS SHOWN
 AS #4 REBAR * WERE
 ORIGINALLY SET WITH 1"
 PIPE PER TM 7620.

