

# Update on May 2026 Storm Event, Resulting Electric Outages and Sanitary Sewer Overflow

Mark Steelman  
Chief Operations Officer

• June 25, 2026



# What happened?



## Mission

Strengthening our community by providing resilient essential services

+

## Vision

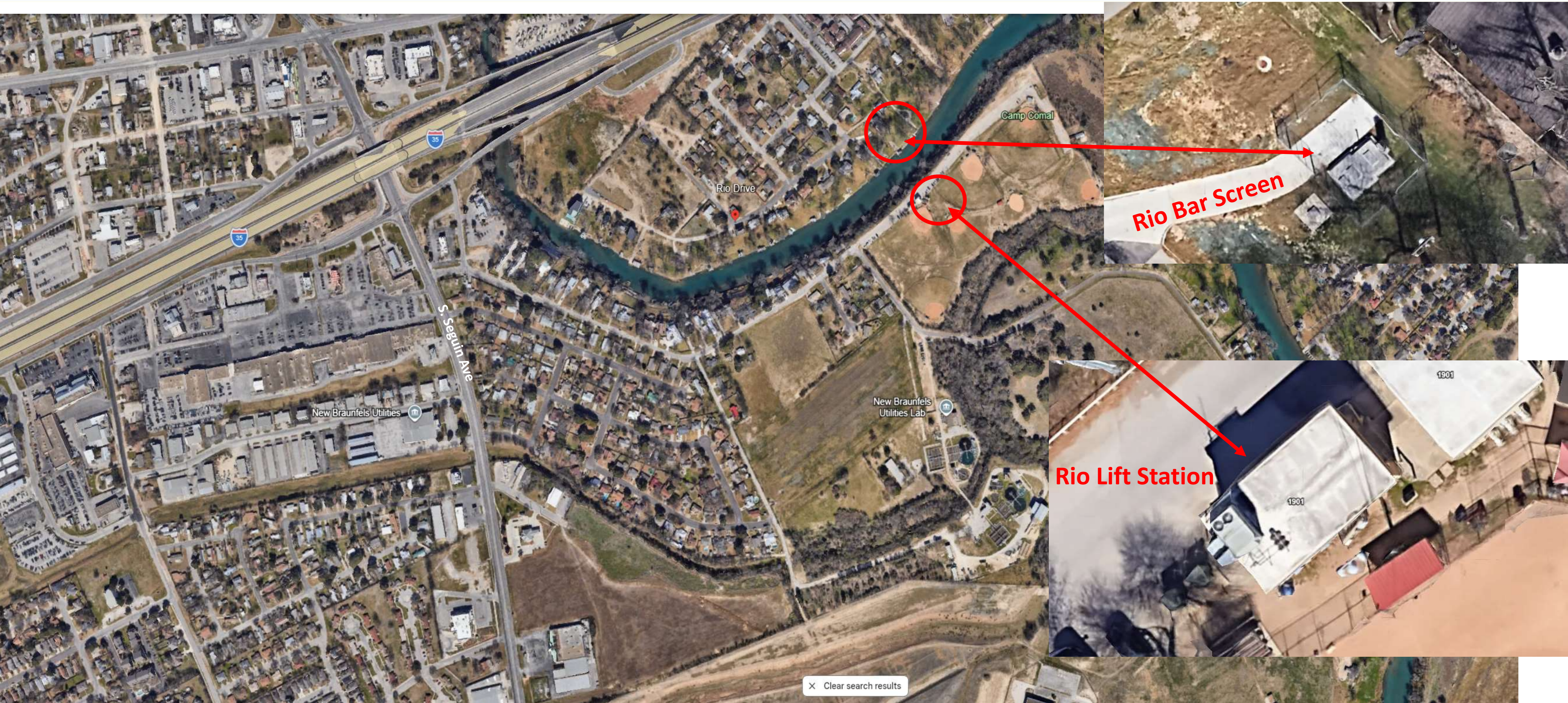
Be a trusted community partner dedicated to excellence in service

+

## Core Values

Safety, Team, Integrity, Culture, and Stewardship

# Rio Bar Screen & Lift Station



## Mission

Strengthening our community by providing resilient essential services

## + Vision

Be a trusted community partner dedicated to excellence in service

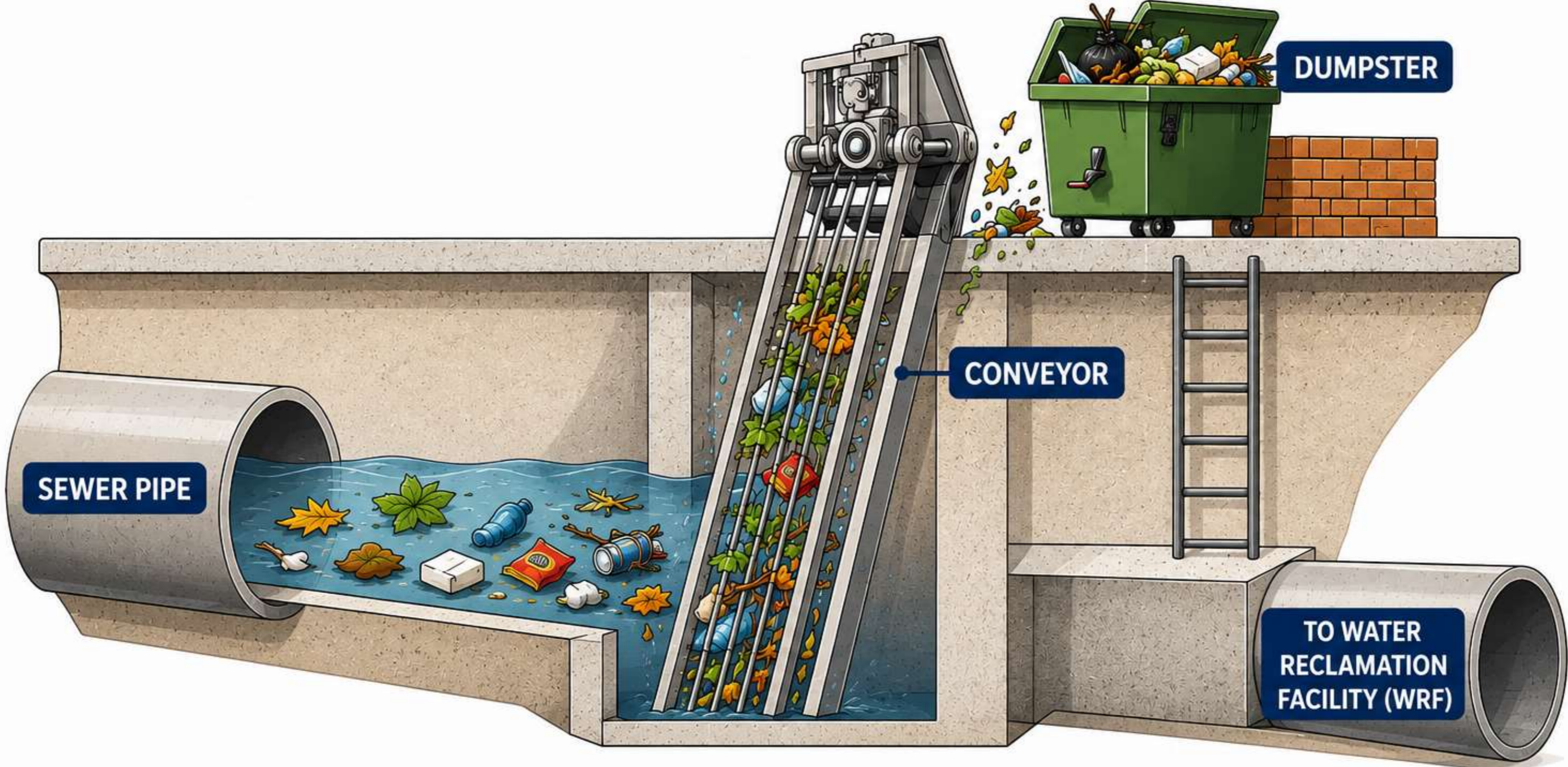
## + Core Values

Safety, Team, Integrity, Culture, and Stewardship

# Rio Lift Station Overview

## HOW A BAR SCREEN WORKS

Keeping Debris Out of Our Sewer System



**Mission**

Strengthening our community by providing resilient essential services

**+ Vision**

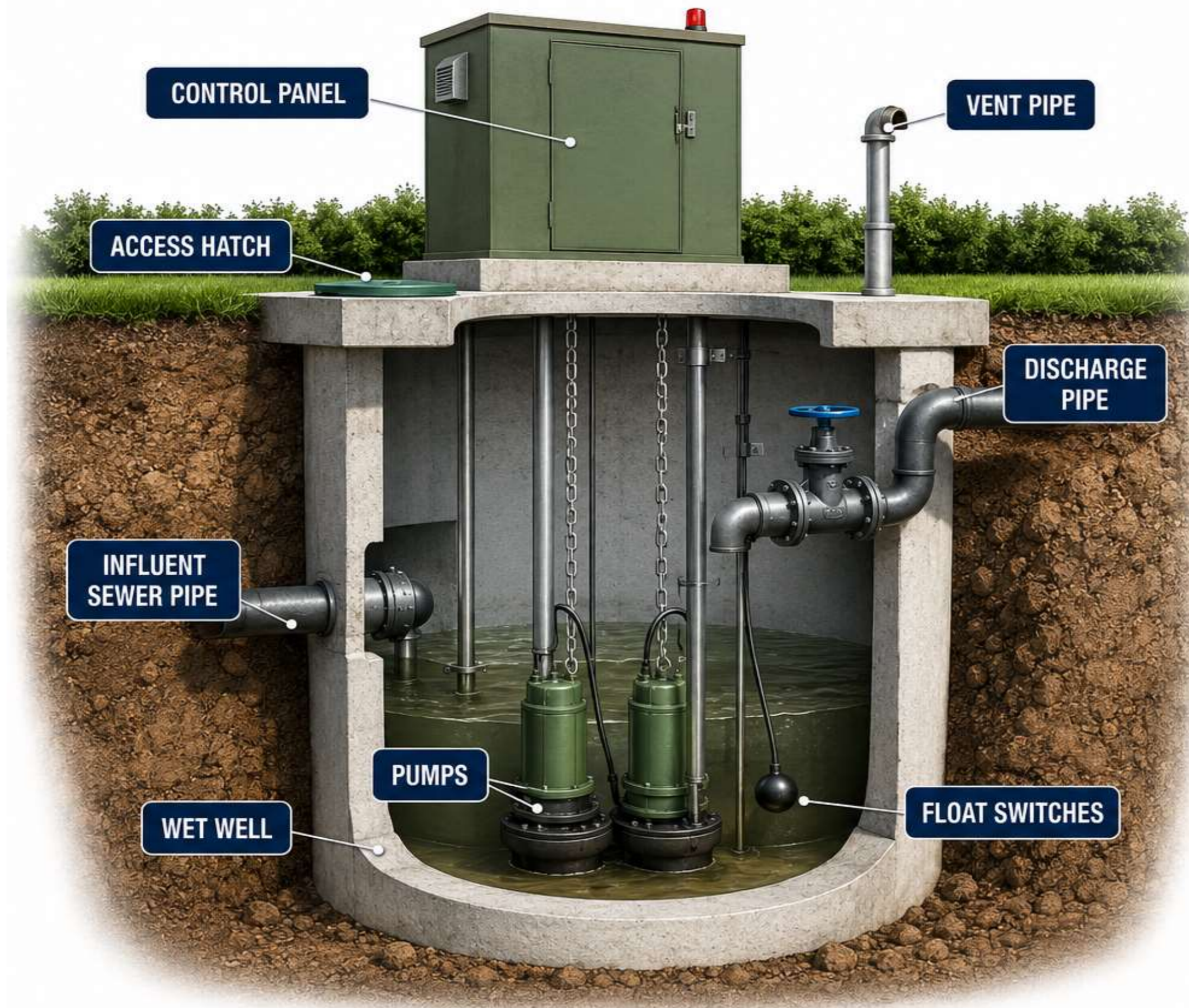
Be a trusted community partner dedicated to excellence in service

**+ Core Values**

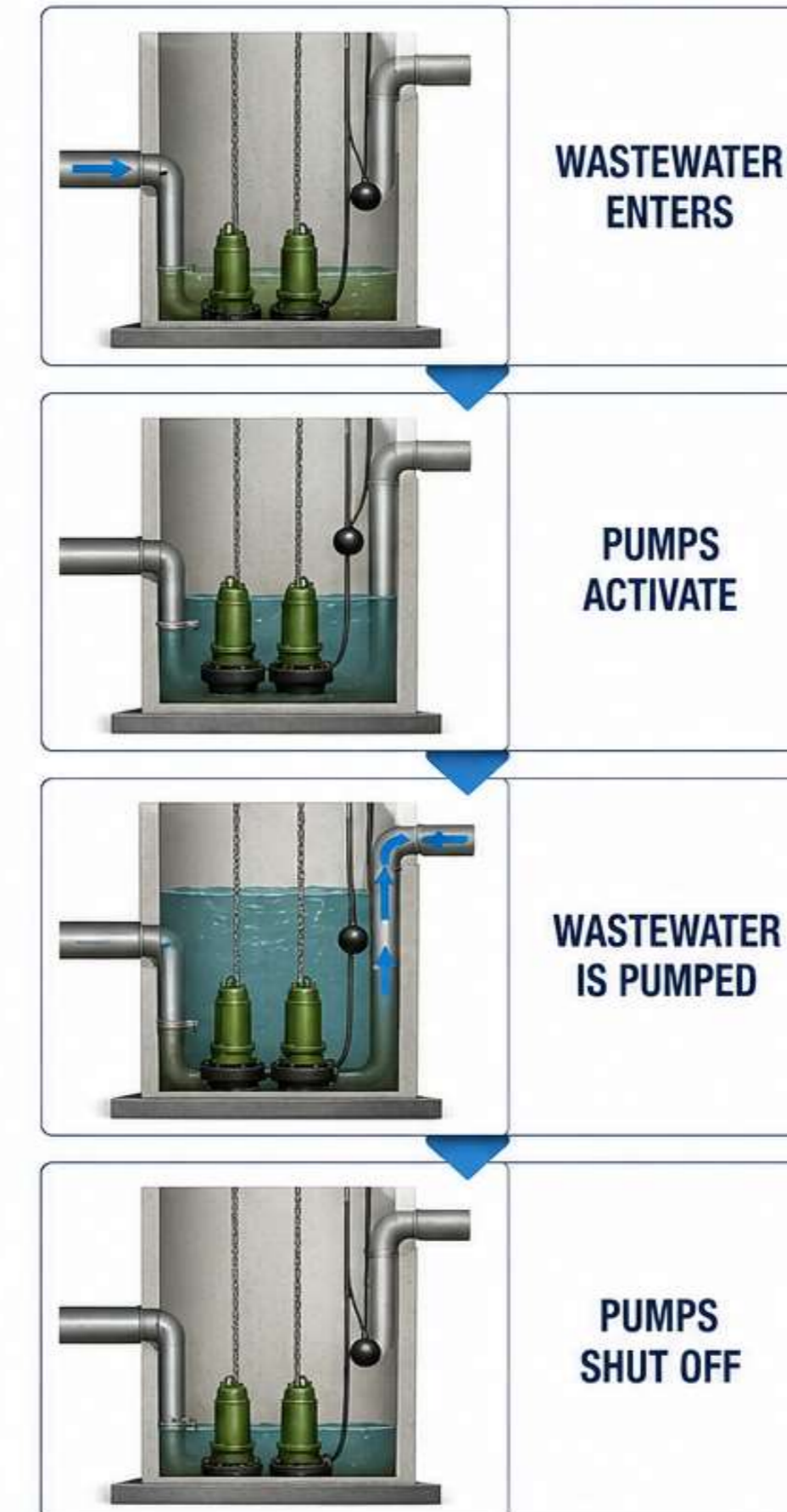
Safety, Team, Integrity, Culture, and Stewardship

# Rio Lift Station Overview

## WASTEWATER LIFT STATION



### HOW IT WORKS



### Mission

Strengthening our community by providing resilient essential services

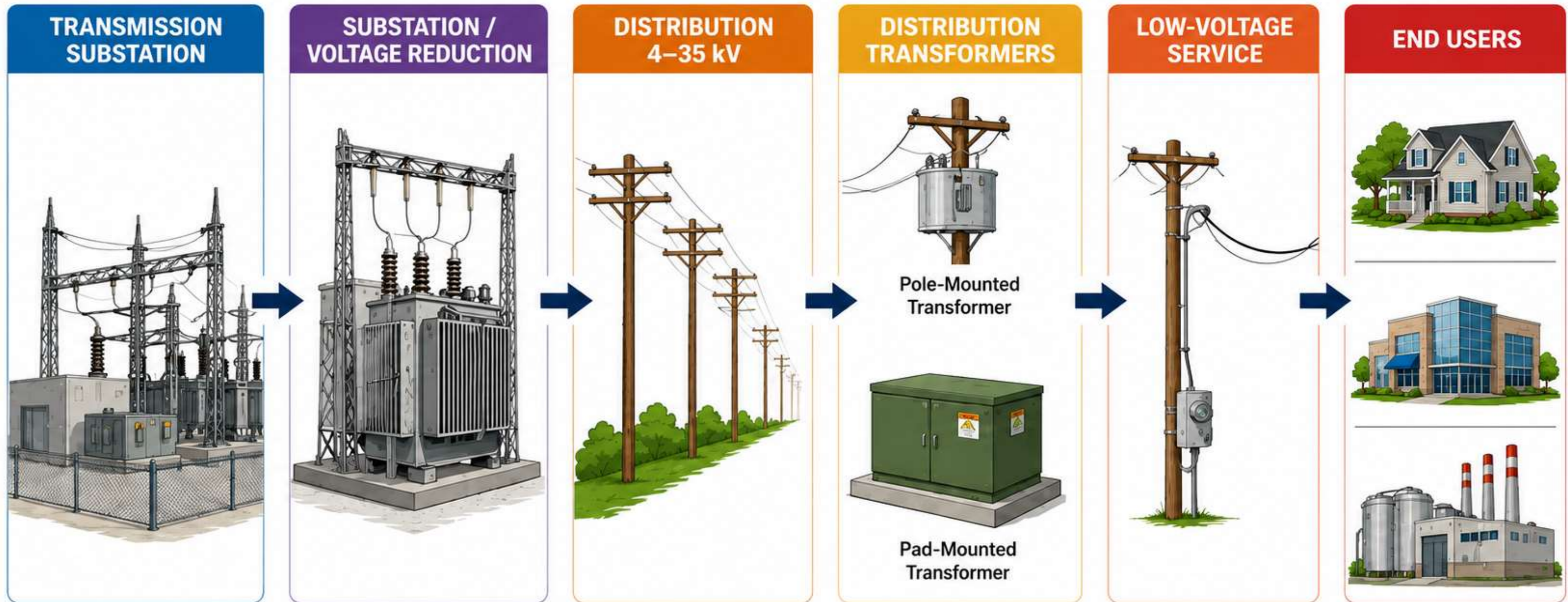
### + Vision

Be a trusted community partner dedicated to excellence in service

### + Core Values

Safety, Team, Integrity, Culture, and Stewardship

# Electric Utility System Overview



## Mission

Strengthening our community by providing resilient essential services

+

## Vision

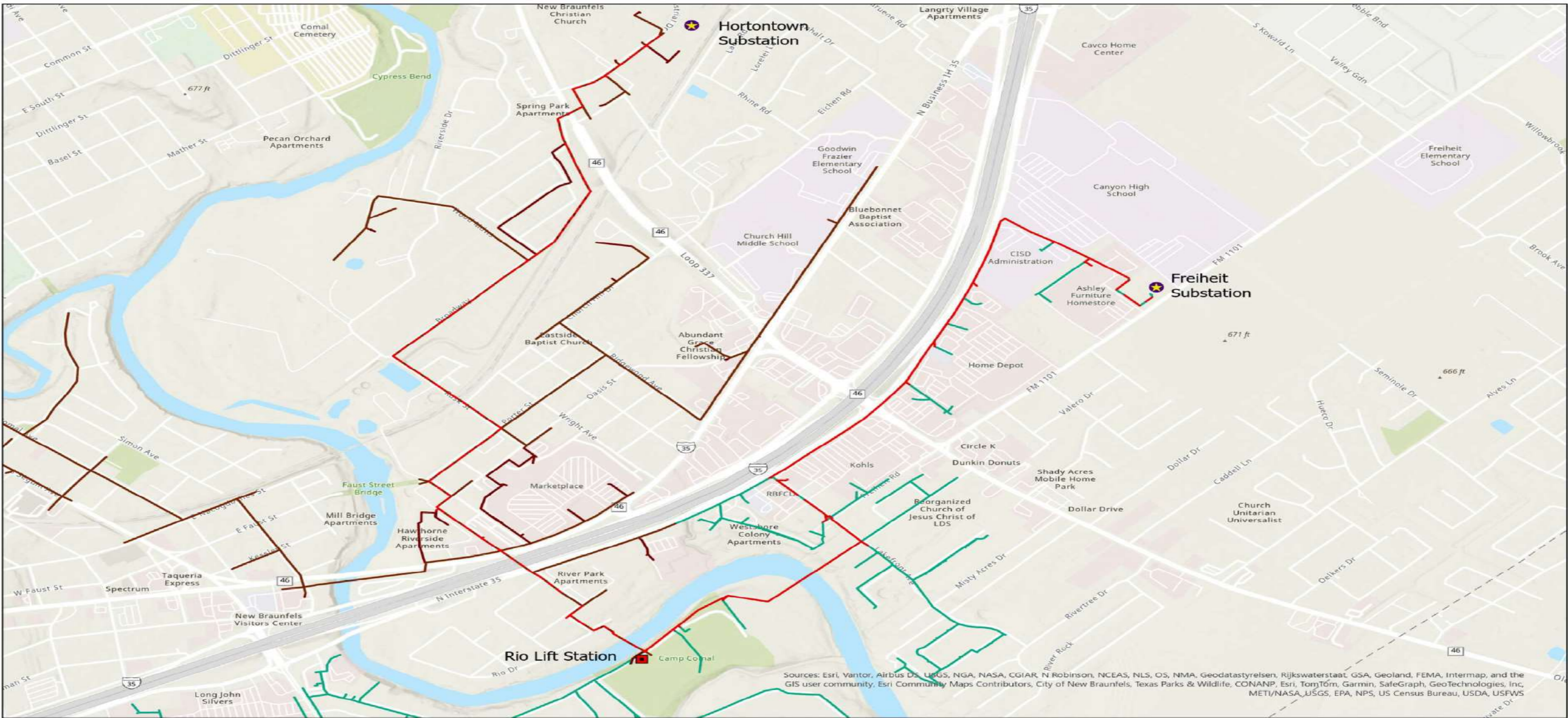
Be a trusted community partner dedicated to excellence in service

+

## Core Values

Safety, Team, Integrity, Culture, and Stewardship

# Rio Lift Station and Substations Feeder Map



## Mission

Strengthening our community by providing resilient essential services

## + Vision

Be a trusted community partner dedicated to excellence in service

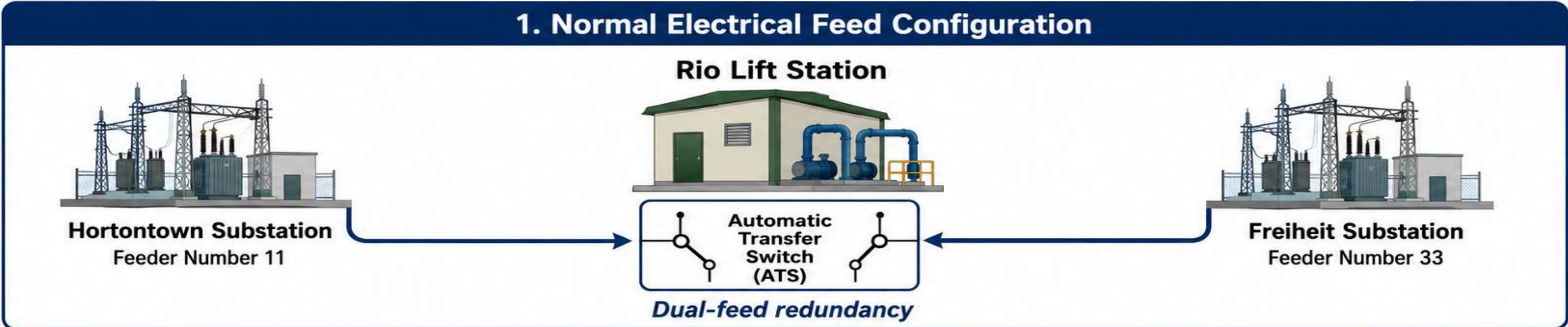
## + Core Values

Safety, Team, Integrity, Culture, and Stewardship

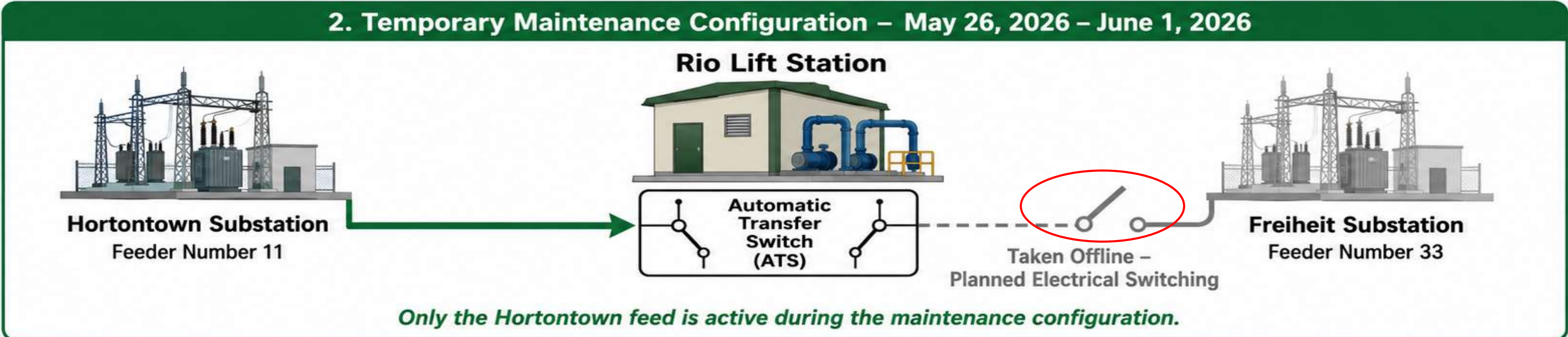


# Rio Lift Station Electrical Configuration

## 1. Normal Electrical Feed Configuration



## 2. Temporary Maintenance Configuration – May 26, 2026 – June 1, 2026



### Mission

Strengthening our community by providing resilient essential services

### + Vision

Be a trusted community partner dedicated to excellence in service

### + Core Values

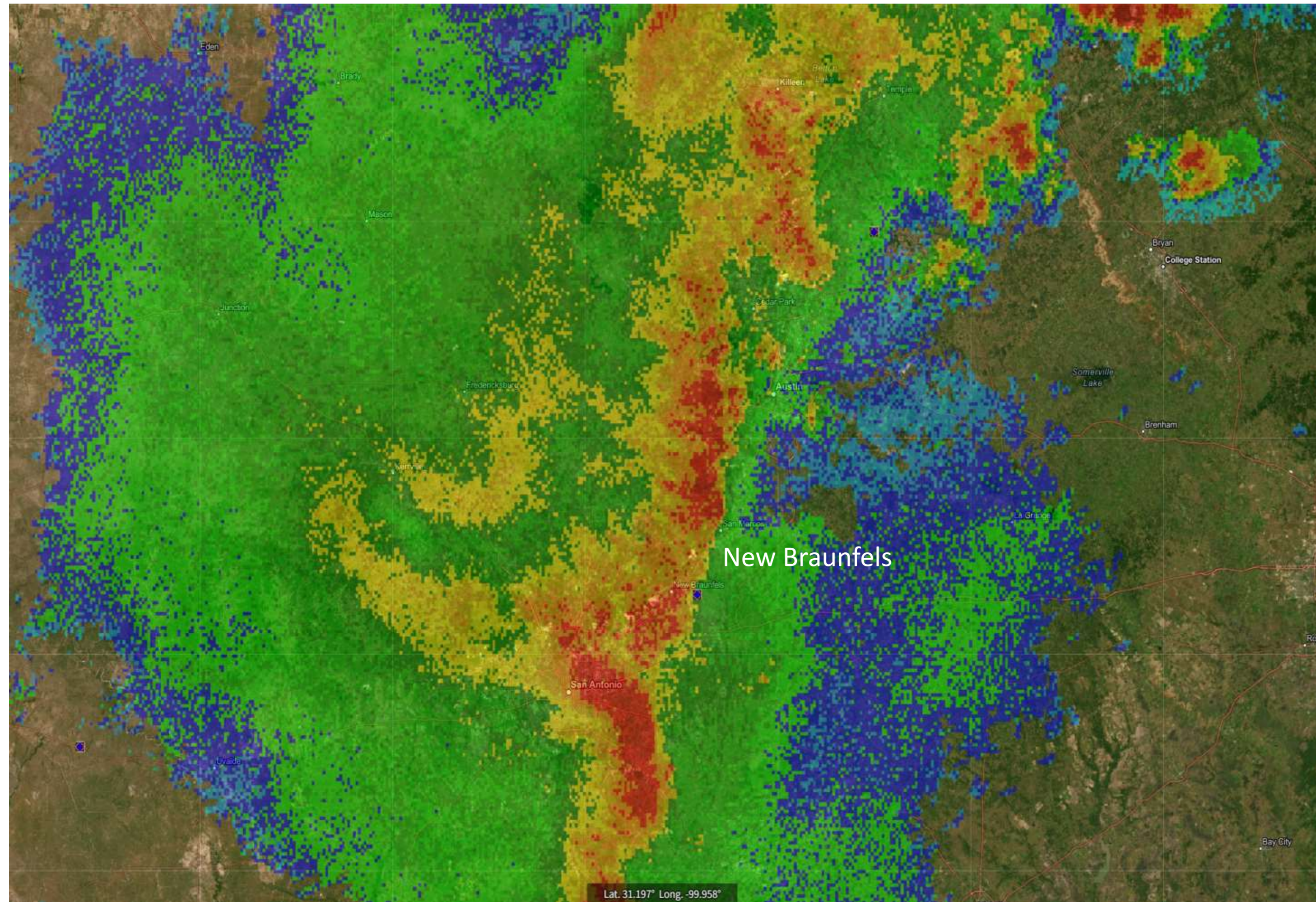
Safety, Team, Integrity, Culture, and Stewardship



# Pre-Event Conditions

- Five-year preventative maintenance at Freiheit Substation on Totalizer Breaker Number 3.
- Approved switching order removing load from Freiheit Feeder Number 33.
- Temporary configuration placed lift station on a single-source, which was Hortontown Feeder Number 11.
- Rio is the only lift station normally served by dual electrical feeds.

# Event Timeline



## May 26, 2026

- 8:46 A.M. - Planned switching completed
- 10:32 P.M. - Storm enters New Braunfels
- 10:35 P.M. - Storm damage at Hortontown Substation;  
Rio Lift Station loses power

## May 27, 2026

- 3:45 A.M. – Power restored
- 3:59 A.M. – Treatment and Compliance Team  
dispatched to Rio lift station
- 4:08 A.M. – Rio Lift Station stops spilling
- 5:17 A.M. – Rio Lift Station returns to normal operating  
level

### Mission

Strengthening our community by providing resilient essential services



### Vision

Be a trusted community partner dedicated to excellence in service



### Core Values

Safety, Team, Integrity, Culture, and Stewardship

# System Failures Identified

## Electrical System

- Loss of Hortontown Feeder Number 11 during temporary switching configuration.

## Monitoring System

- Supervisory Control and Data Acquisition (SCADA) communications failed during power-loss event due to failure of the Uninterruptable Power Supply (UPS).

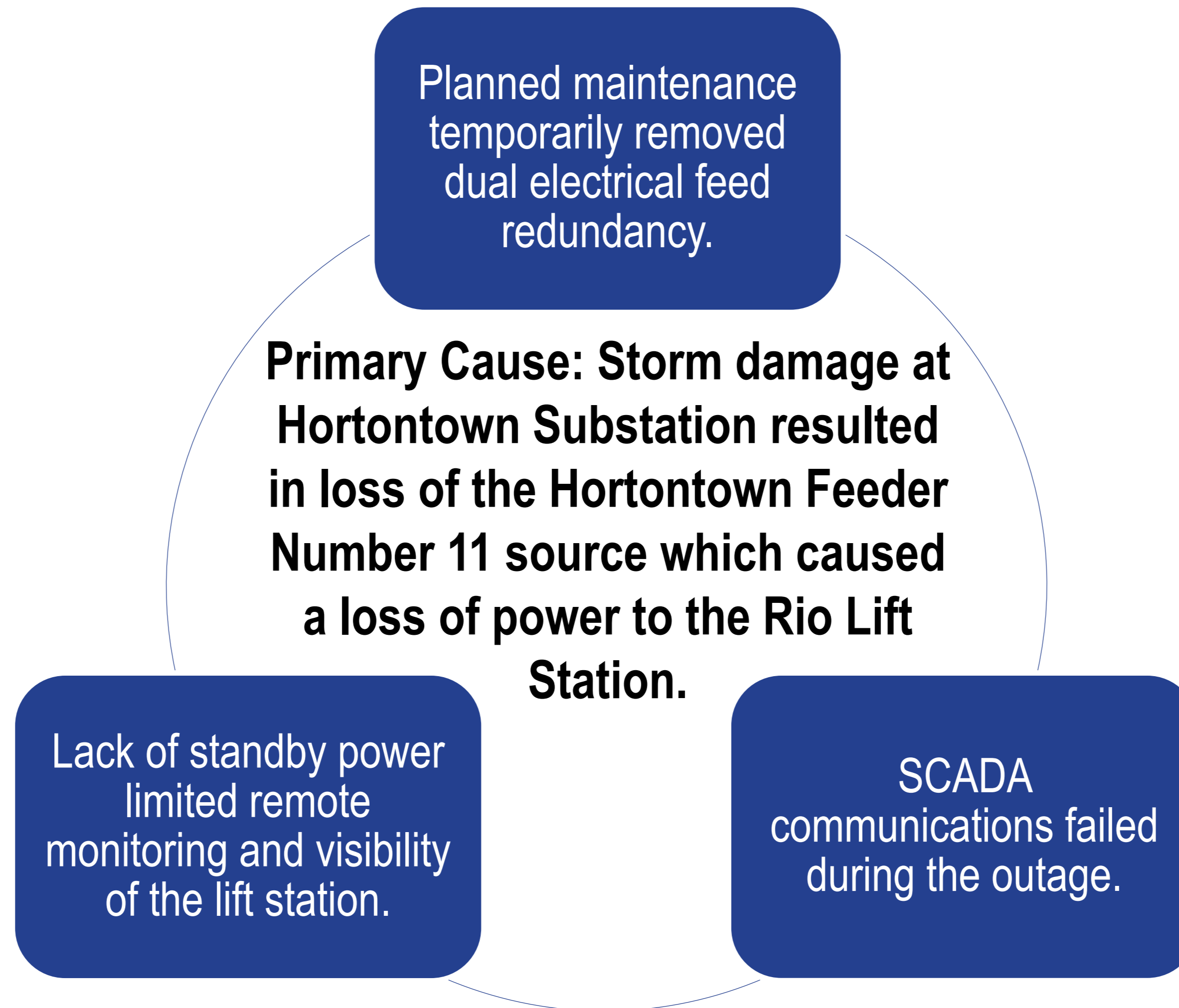
## Operational Visibility

- Control Center lacked real-time awareness of lift station conditions due to UPS failure.

# Process Gaps Identified

- Temporary switching did not fully account for loss of electrical redundancy at the Rio Lift Station.
- Single-feed electrical operation lacked enhanced monitoring and auxiliary power.
- Notify all related departments of major facility feed or control changes.
- Critical facility operational modifications are not elevated for awareness as a standard practice.

# Root Cause Analysis



# Corrective Action Steps Completed

- ✓ Power restored
- ✓ Lift station operating normally
- ✓ Cleanup & sampling
- ✓ Regulatory agency coordination (Texas Commission on Environmental Quality and Texas Parks & Wildlife)
- ✓ Communicated to the public
- ✓ Priority Response Facilities reviewed
- ✓ Dual electrical feed facilities approval process

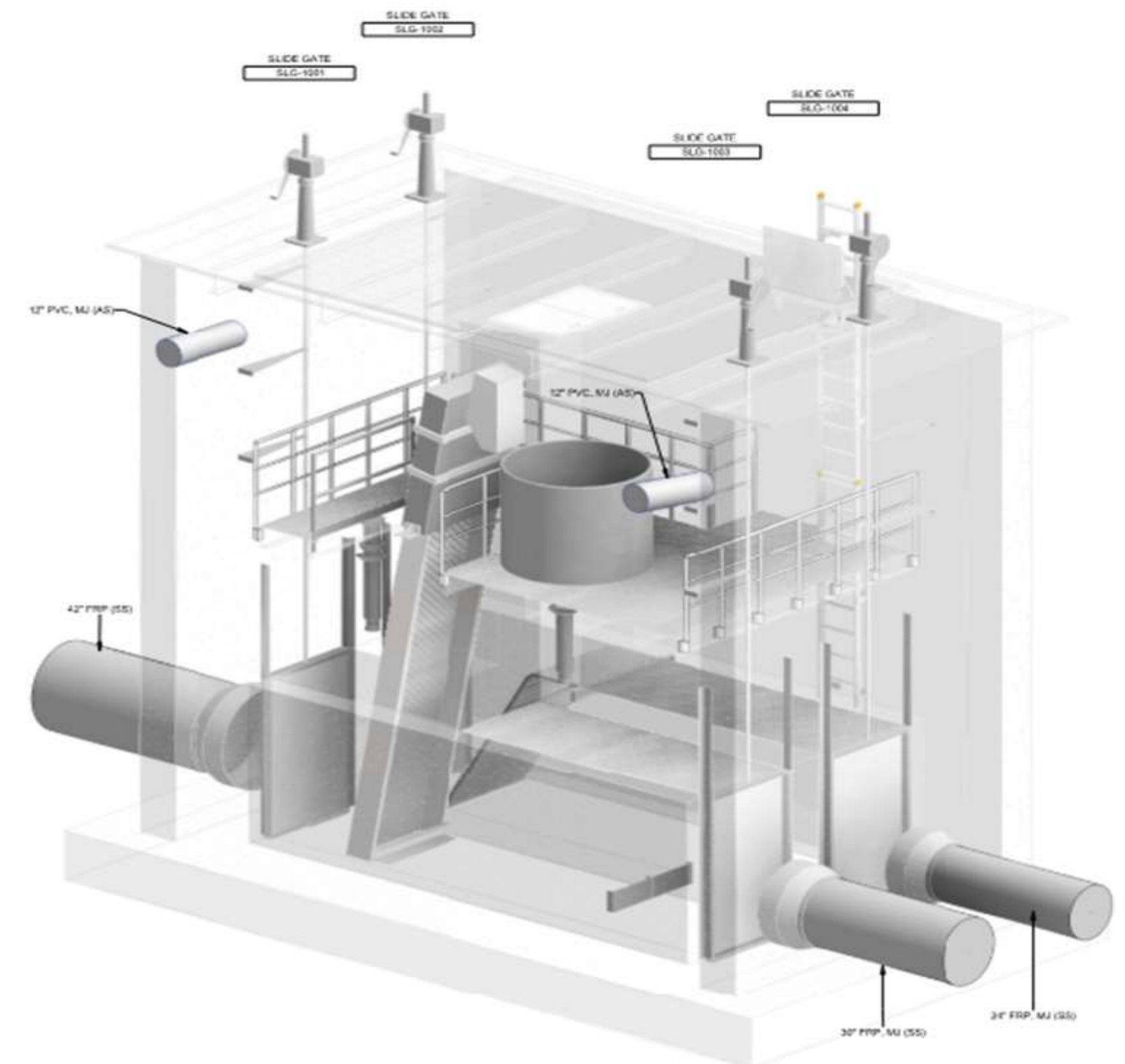
# Upcoming Corrective Action Steps

Action Item	ETA
New smart UPS installed and final SCADA integration	July 10, 2026
Severe weather staffing	July 31, 2026
Operational procedure review	July 31, 2026
Alarm verification	September 4, 2026
SCADA communications assessment	January 15, 2027

# Capital Improvement Opportunities

## I-35 Interceptor Upgrade (Rio Bar Screen)

- Project Overview
  - Planned upgrade of the existing bar screen facility at 470 Rio Dr., located along the Guadalupe River across from Camp Comal and the Rio Lift Station.
  - Site of the recent sanitary sewer overflow.
- Scope of Work
  - Demolish the existing bar screen structure.
  - Construct a new, deeper dual-channel bar screen with full bypass capability.
  - Install an improved odor control system to reduce off-site impacts.
  - Upgrade Supervisory Control and Data Acquisition for enhanced monitoring, reliability, and operational control.
- Schedule
  - First identified in 2021 Master Plan
  - Start: Early 2027
  - Completion: Late 2028
- Cost
  - Estimated at \$10,500,000



# Questions?

## **Mission**

Strengthening our community by providing resilient essential services

+

## **Vision**

Be a trusted community partner dedicated to excellence in service

+

## **Core Values**

Safety, Team, Integrity, Culture, and Stewardship