

Financial Update

- April 2025 Financials

- Kimberly Huffman, Accounting Manager



Board Financial Policy Compliance - April 2025 YTD

	FY 2024 Actual	FY 2025 Budget	Financial Policy	FY 2025 Actual*
Debt to Capitalization (lower is better)	41.1%	45.5%	≤55.0%	38.7%
Debt Service Coverage (higher is better)	5.14	4.71	≥2.40	4.78
Days Cash on Hand (higher is better)	208	224	≥140	280
Days Liquidity on Hand (higher is better)	495	N/A	N/A	460

* Amounts are calculated by annualizing the YTD results

Mission

Strengthening our community by providing resilient essential services

+

Vision

Be a trusted community partner dedicated to excellence in service

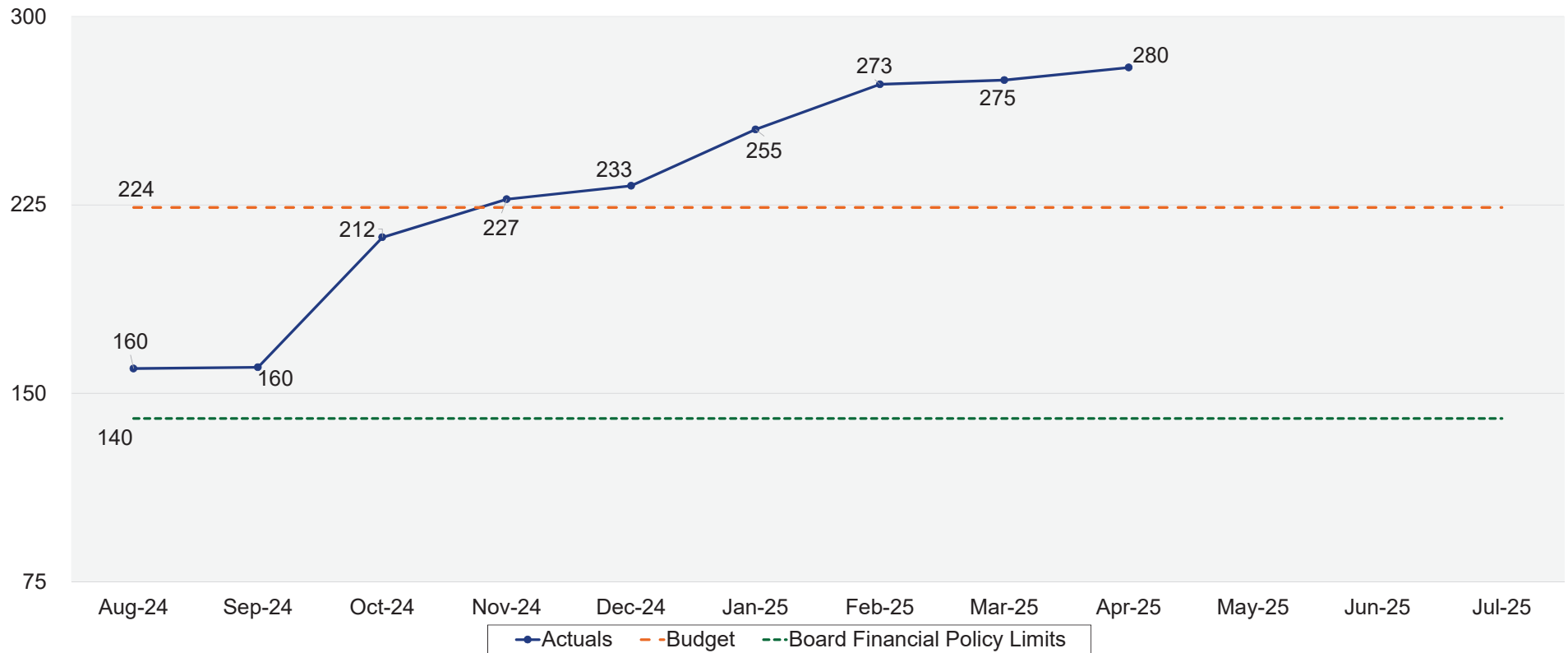
+

Core Values

Safety, Team, Integrity, Culture, and Stewardship



Days Cash on Hand - April 2025 YTD



Mission

Strengthening our community by providing resilient essential services

+

Vision

Be a trusted community partner dedicated to excellence in service

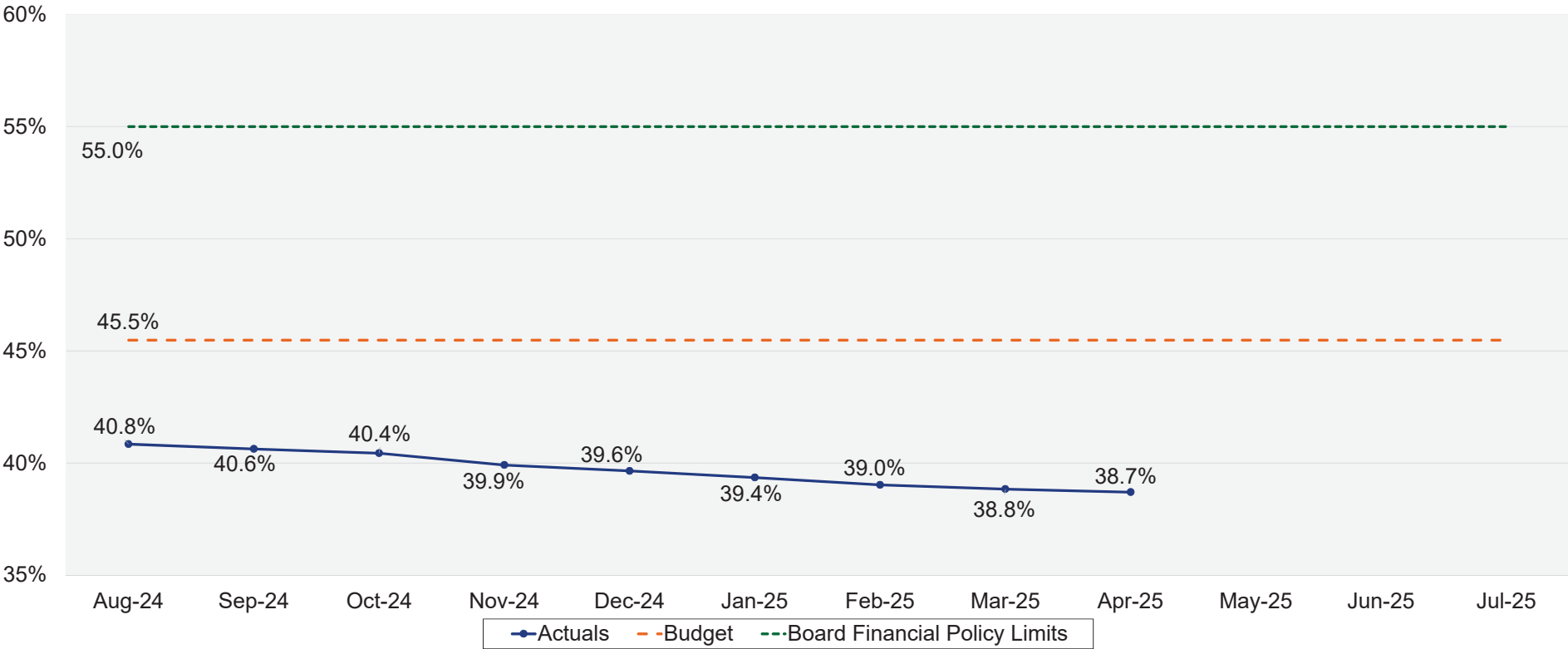
+

Core Values

Safety, Team, Integrity, Culture, and Stewardship



Debt to Capitalization - April 2025 YTD



Mission

Strengthening our community by providing resilient essential services

+

Vision

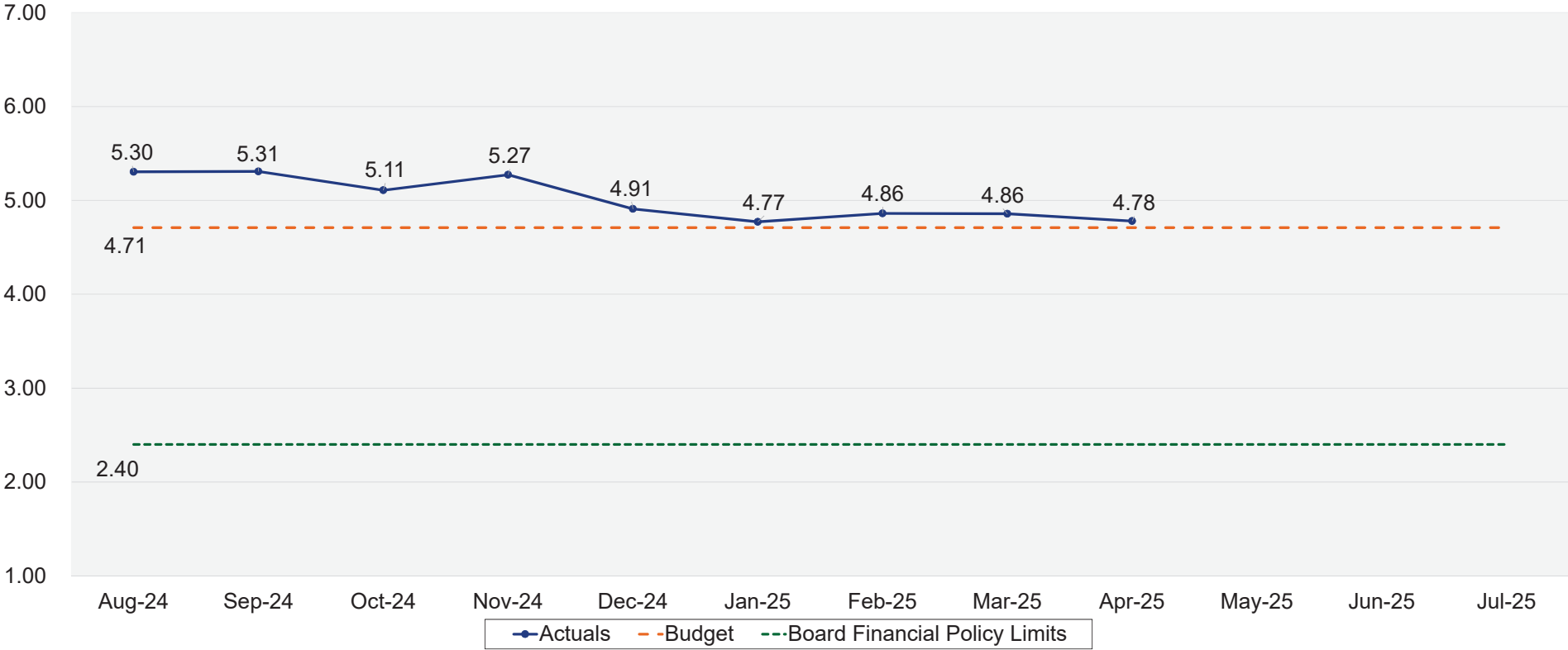
Be a trusted community partner dedicated to excellence in service

+

Core Values

Safety, Team, Integrity, Culture, and Stewardship

Debt Service Coverage - April 2025 YTD



Mission

Strengthening our community by providing resilient essential services

+

Vision

Be a trusted community partner dedicated to excellence in service

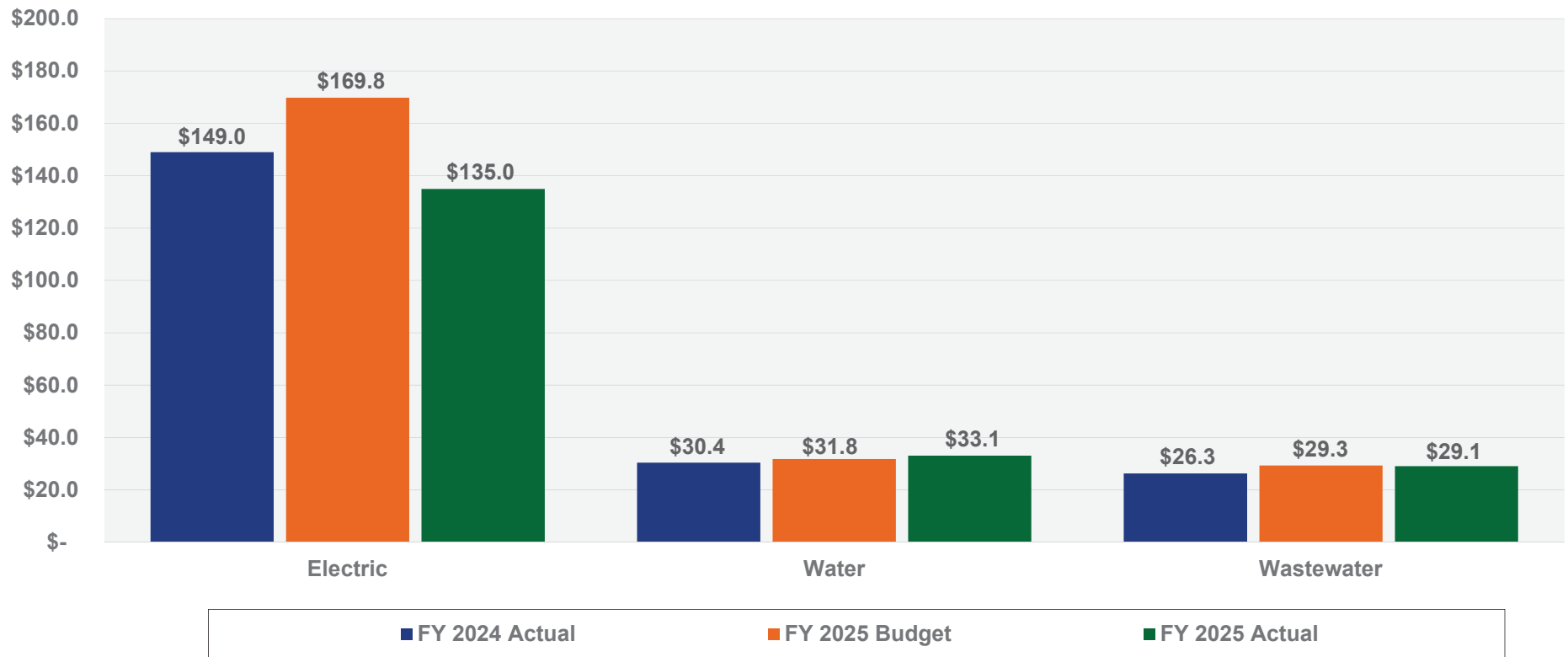
+

Core Values

Safety, Team, Integrity, Culture, and Stewardship

Operating Revenue by LOB

April 2025 YTD – Amounts in Millions



Mission

Strengthening our community by providing resilient essential services

+

Vision

Be a trusted community partner dedicated to excellence in service

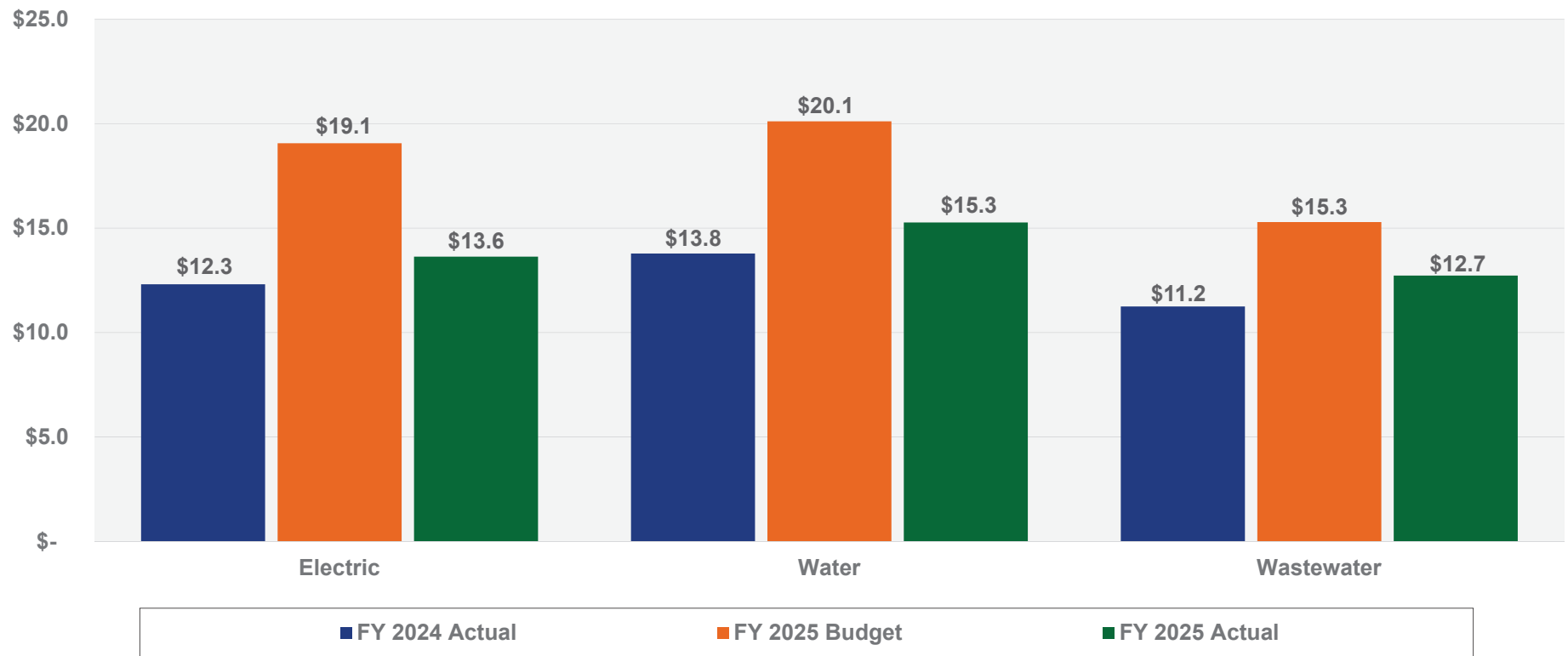
+

Core Values

Safety, Team, Integrity, Culture, and Stewardship

Operating Expenses* by LOB

April 2025 YTD – Amounts in Millions



*Excludes purchased power, purchased water, and depreciation expense

Mission

Strengthening our community by providing resilient essential services

+

Vision

Be a trusted community partner dedicated to excellence in service

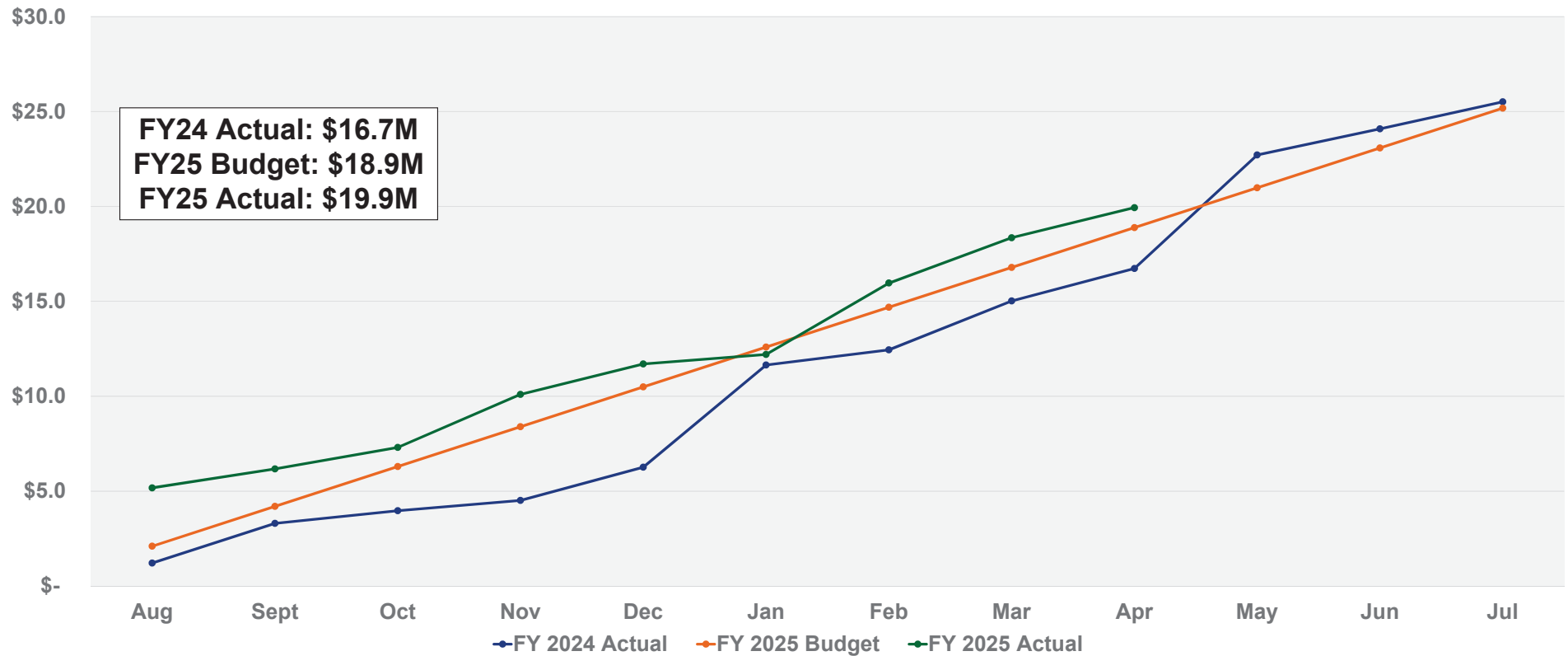
+

Core Values

Safety, Team, Integrity, Culture, and Stewardship

Impact Fee Revenues

April 2025 YTD – Amounts in Millions*



* Amounts shown are YTD for each month

Mission

Strengthening our community by providing resilient essential services

+

Vision

Be a trusted community partner dedicated to excellence in service

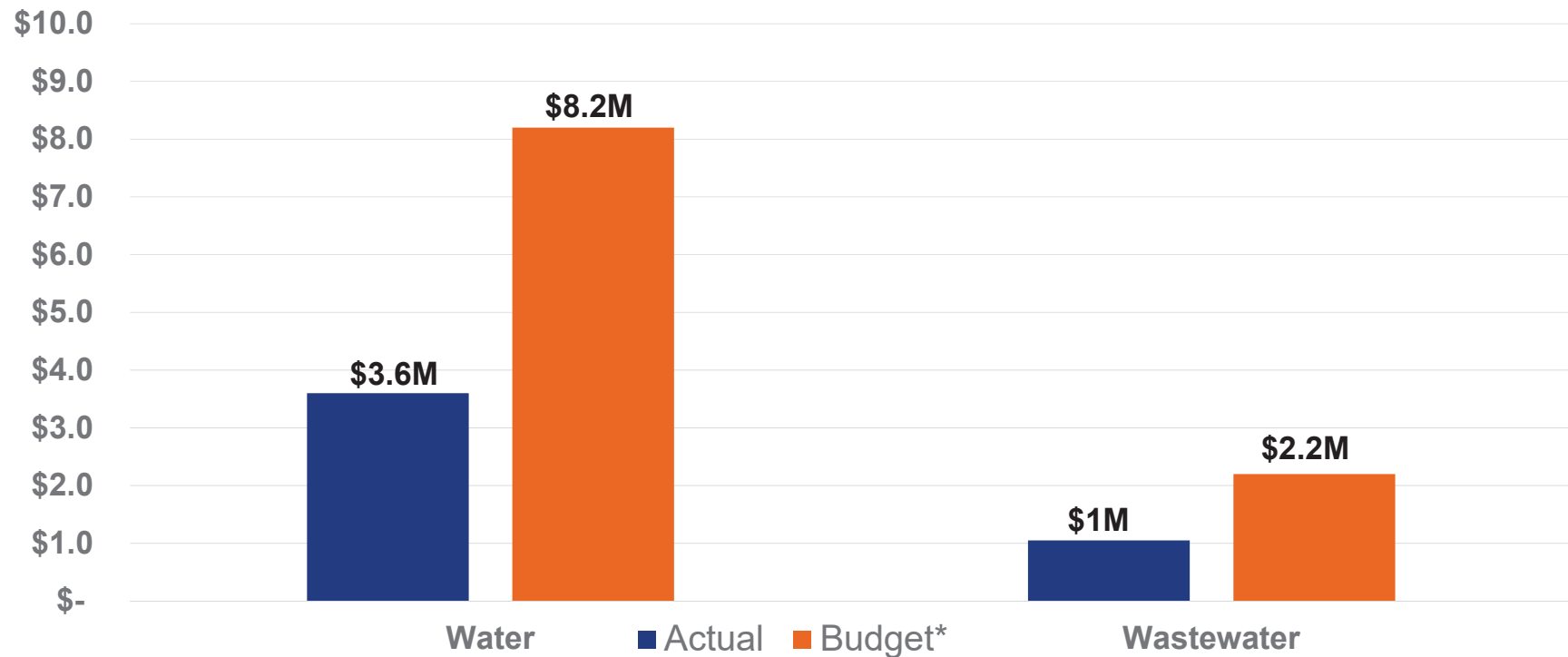
+

Core Values

Safety, Team, Integrity, Culture, and Stewardship

Impact Fees Collections-Program E Update – April 2025

Amount in Millions



* Fiscal year budget amount

Mission

Strengthening our community by providing resilient essential services

+

Vision

Be a trusted community partner dedicated to excellence in service

+

Core Values

Safety, Team, Integrity, Culture, and Stewardship

Power Supply Reserves Update

As of FY25 Budget	Power Stabilization Fund FY25	Power Stabilization Fund Full, FY28
Target	\$50M	\$95M
As of April 30, 2025	\$46M	\$46M

Mission

Strengthening our community by providing resilient essential services

+

Vision

Be a trusted community partner dedicated to excellence in service

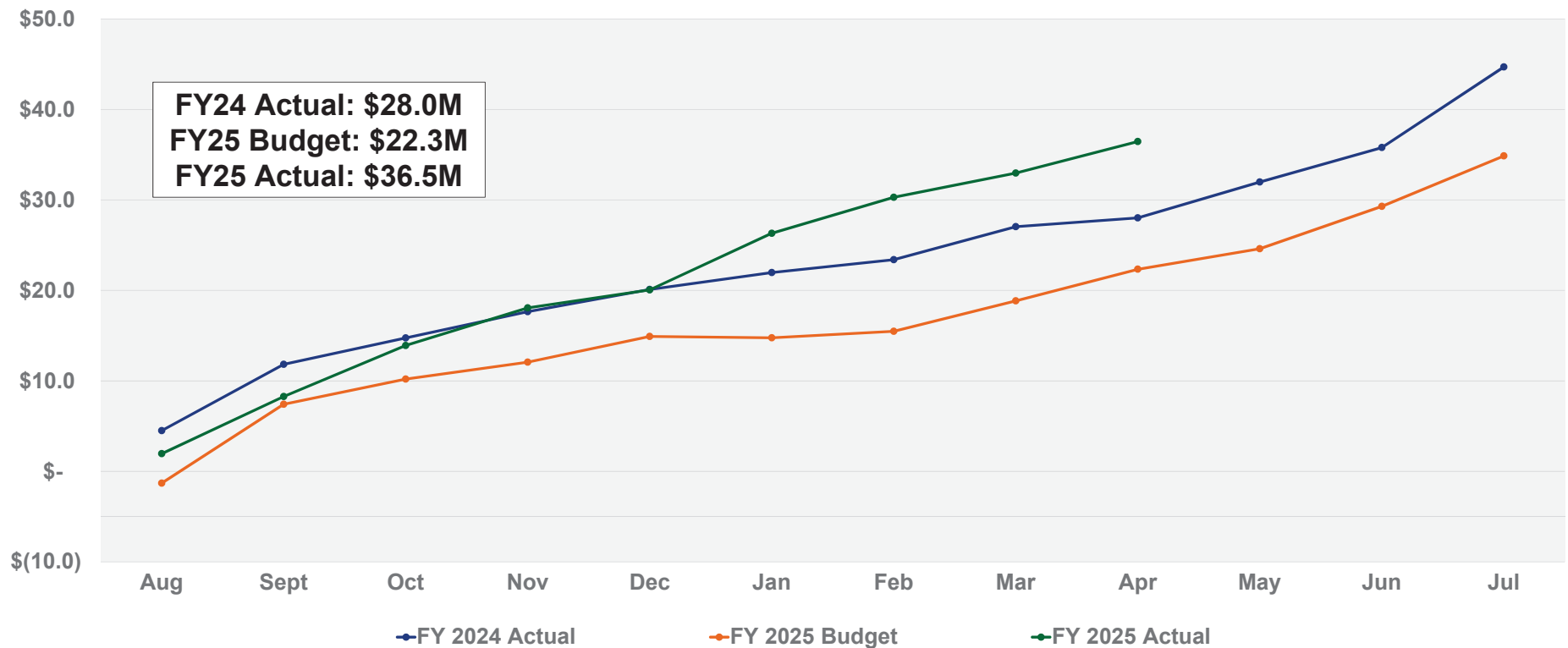
+

Core Values

Safety, Team, Integrity, Culture, and Stewardship

Net Operating Income

April 2025– Amounts in Millions*



* Amounts shown are YTD for each month

Mission

Strengthening our community by providing resilient essential services

+

Vision

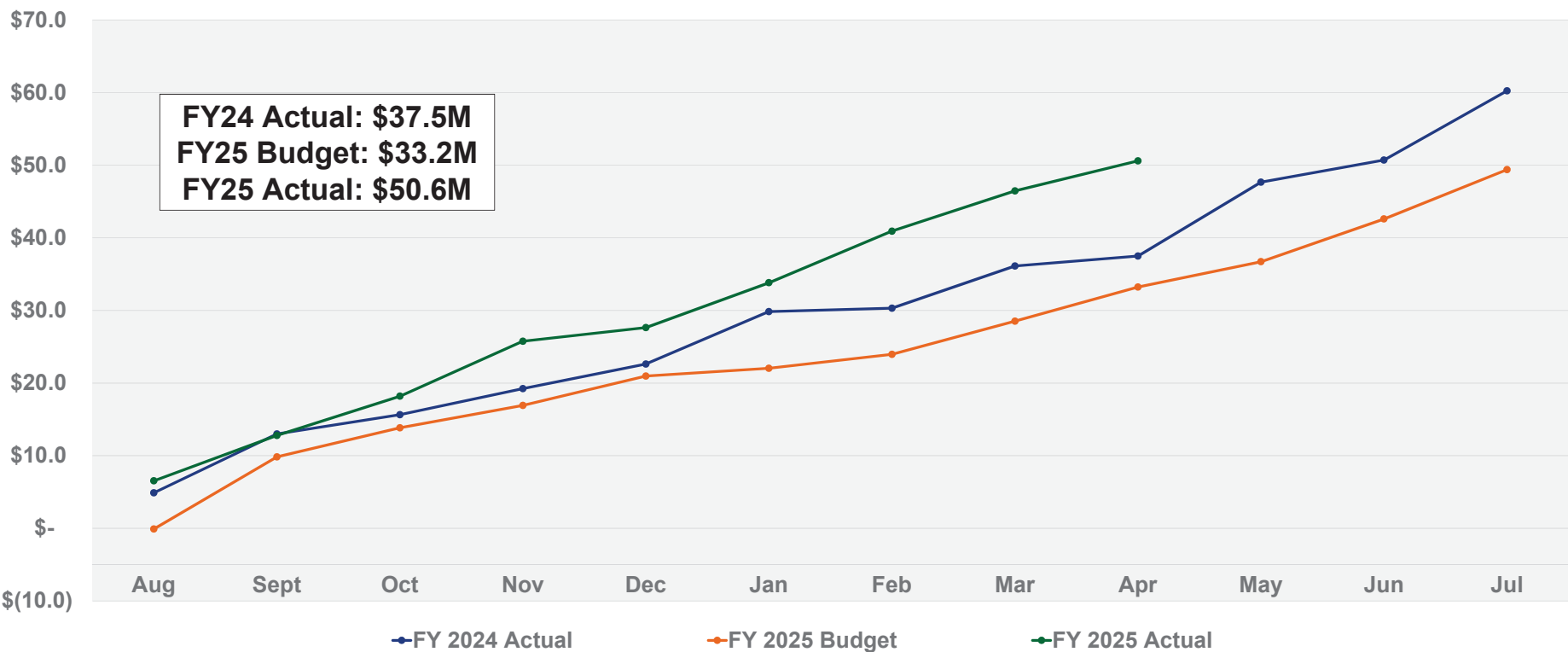
Be a trusted community partner dedicated to excellence in service

+

Core Values

Safety, Team, Integrity, Culture, and Stewardship

Change in Net Position After Contributions April 2025– Amounts in Millions*



* Amounts shown are YTD for each month

Mission

Strengthening our community by providing resilient essential services

+

Vision

Be a trusted community partner dedicated to excellence in service

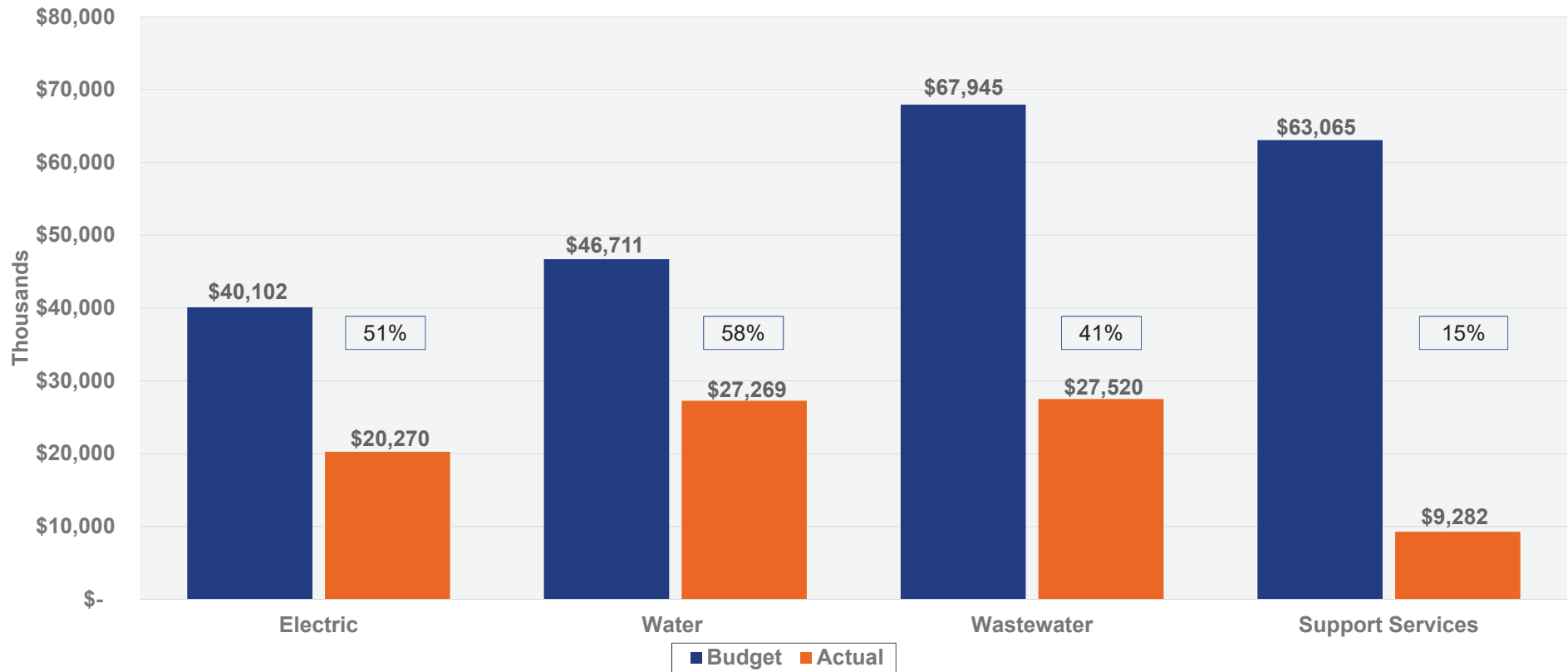
+

Core Values

Safety, Team, Integrity, Culture, and Stewardship

Capital Project Expenditures

April 2025 YTD – Amounts in Thousands



Mission

Strengthening our community by providing resilient essential services

+

Vision

Be a trusted community partner dedicated to excellence in service

+

Core Values

Safety, Team, Integrity, Culture, and Stewardship

Questions?

Mission

Strengthening our community by providing resilient essential services

+

Vision

Be a trusted community partner dedicated to excellence in service

+

Core Values

Safety, Team, Integrity, Culture, and Stewardship