



Financial Update

- March 2026 Financials

- Kimberly DaCosta, Accounting Manager

NBU NEW BRAUNFELS
UTILITIES

Board Financial Policy Compliance - March 2026 YTD

	FY 2026 Budget	Financial Policy	FY 2026 Actual*
Debt to Capitalization (lower is better)	48.9%	≤55.0%	38.9%
Debt Service Coverage (higher is better)	2.75	≥2.40	4.50
Days Cash on Hand (higher is better)	220	≥140	224
Days Liquidity on Hand (higher is better)	N/A	N/A	351

* Amounts are calculated by annualizing the YTD results

Mission

Strengthening our community by providing resilient essential services



Vision

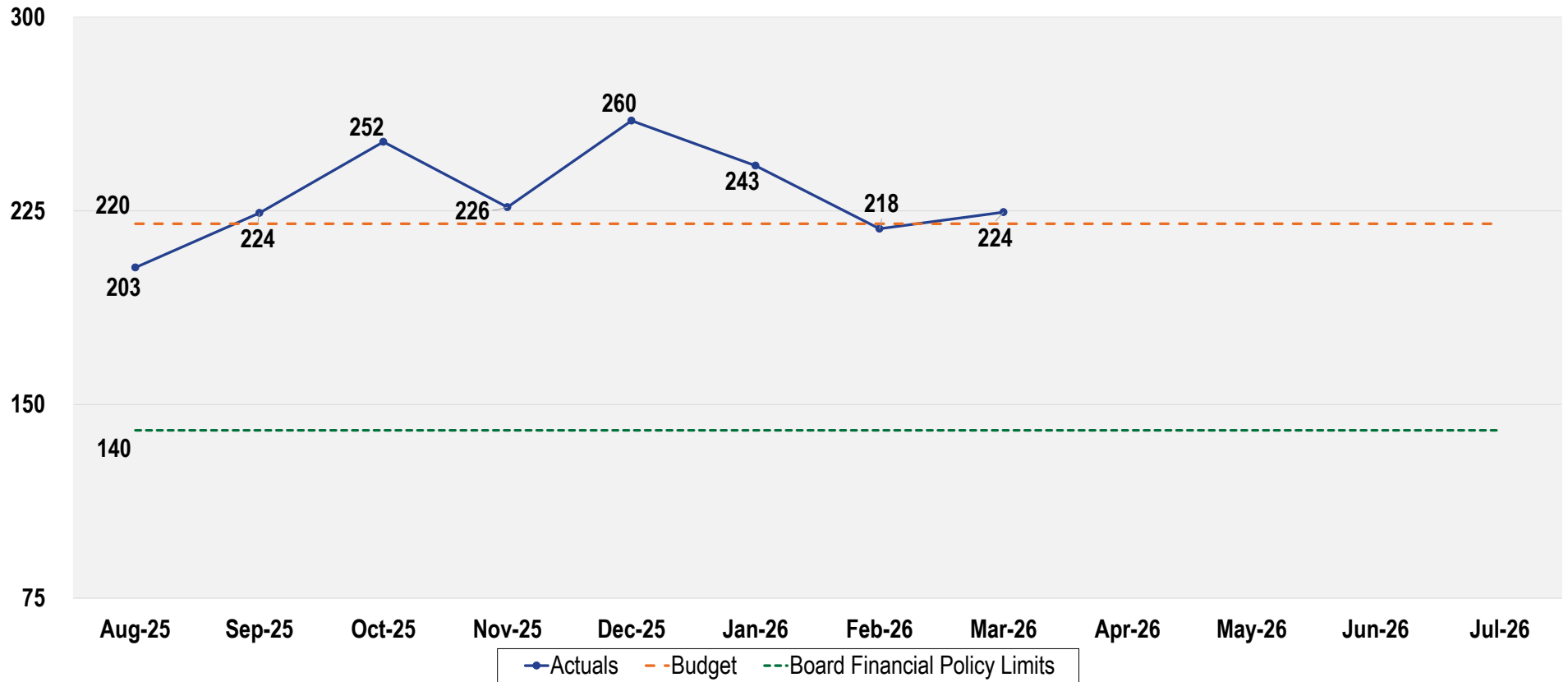
Be a trusted community partner dedicated to excellence in service



Core Values

Safety, Team, Integrity, Culture, and Stewardship

Days Cash on Hand - March 2026 YTD



Mission

Strengthening our community by providing resilient essential services

+

Vision

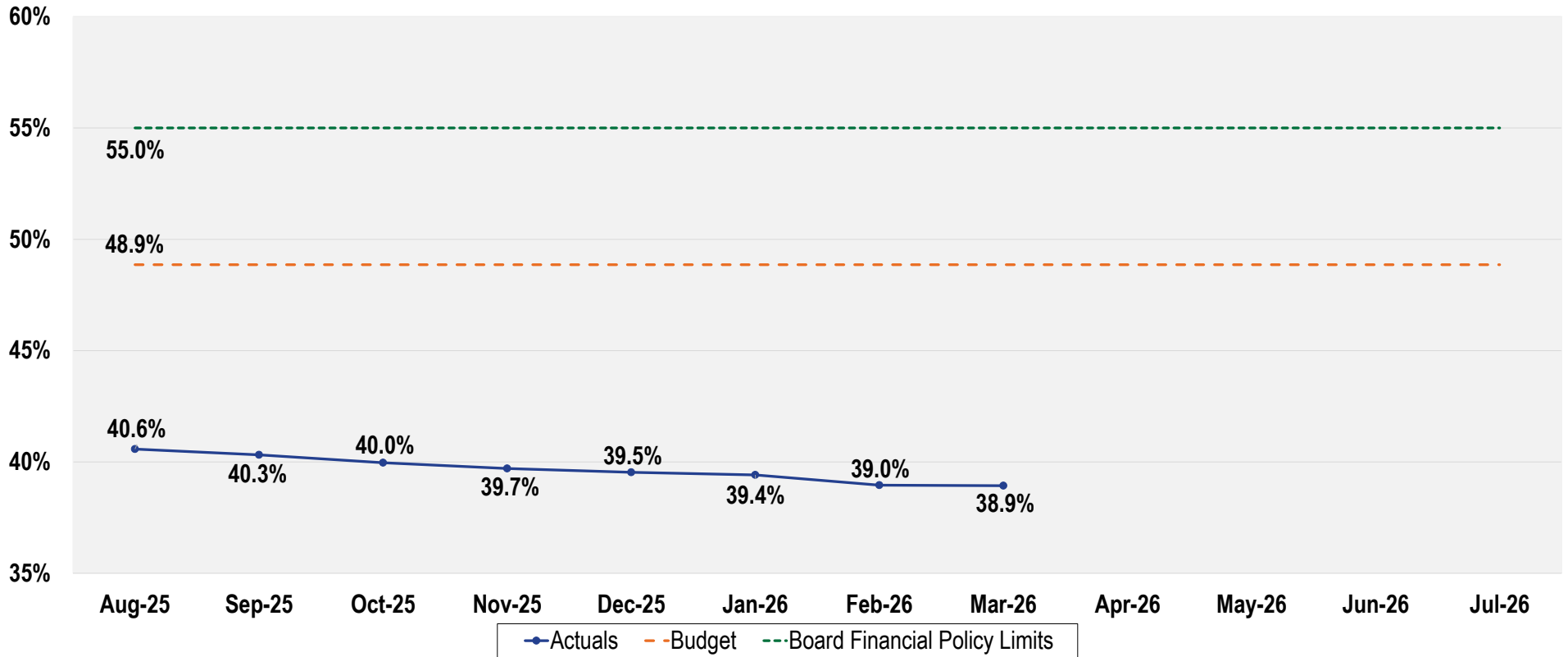
Be a trusted community partner dedicated to excellence in service

+

Core Values

Safety, Team, Integrity, Culture, and Stewardship

Debt to Capitalization - March 2026 YTD



Mission

Strengthening our community by providing resilient essential services



Vision

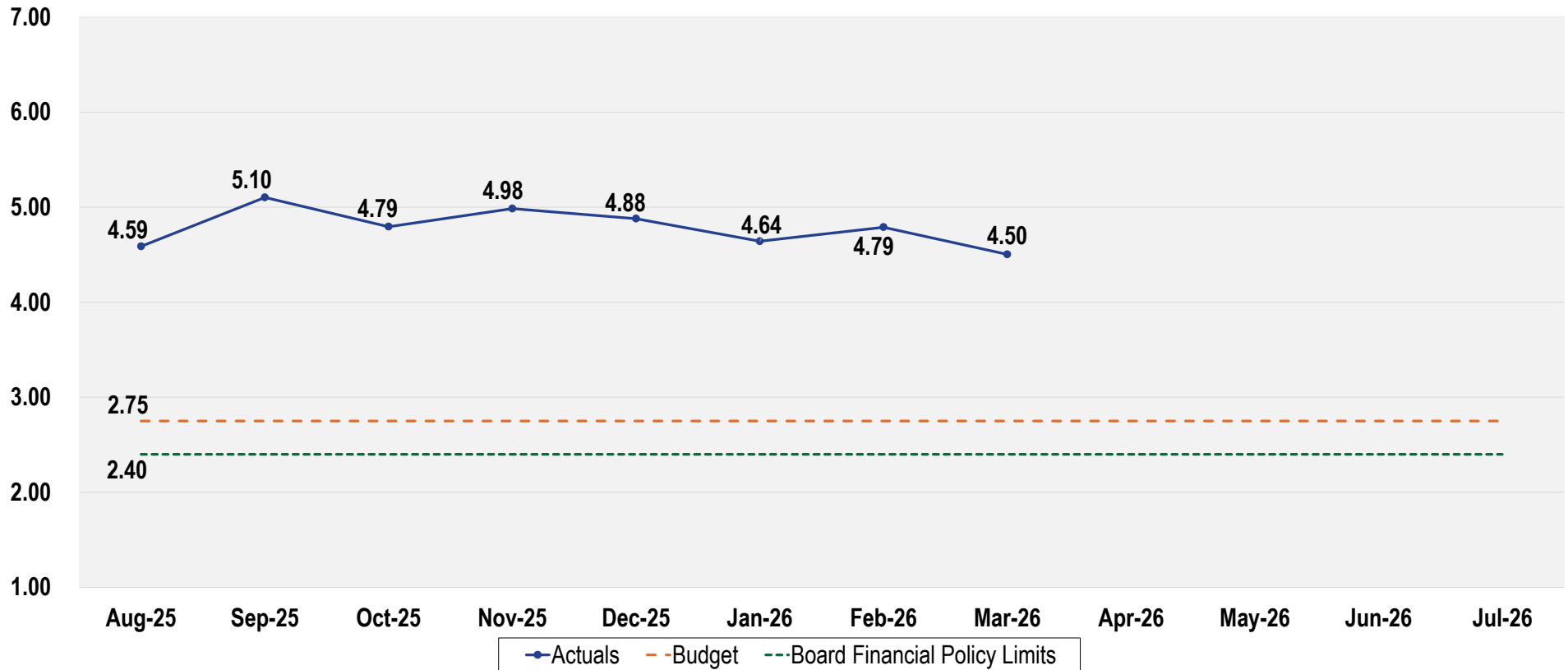
Be a trusted community partner dedicated to excellence in service



Core Values

Safety, Team, Integrity, Culture, and Stewardship

Debt Service Coverage - March 2026 YTD



Mission

Strengthening our community by providing resilient essential services



Vision

Be a trusted community partner dedicated to excellence in service

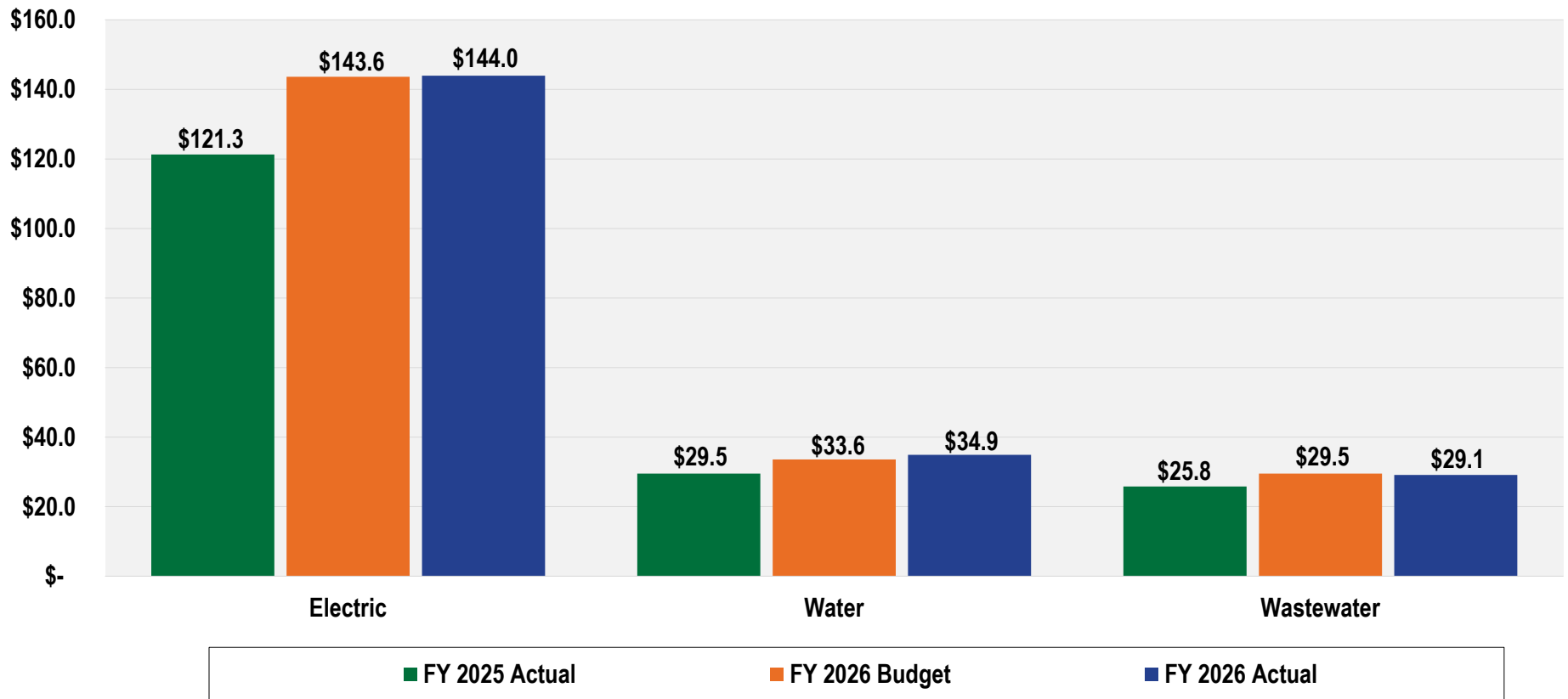


Core Values

Safety, Team, Integrity, Culture, and Stewardship

Operating Revenue by LOB

March 2026 YTD – Amounts in Millions



Mission

Strengthening our community by providing resilient essential services

+

Vision

Be a trusted community partner dedicated to excellence in service

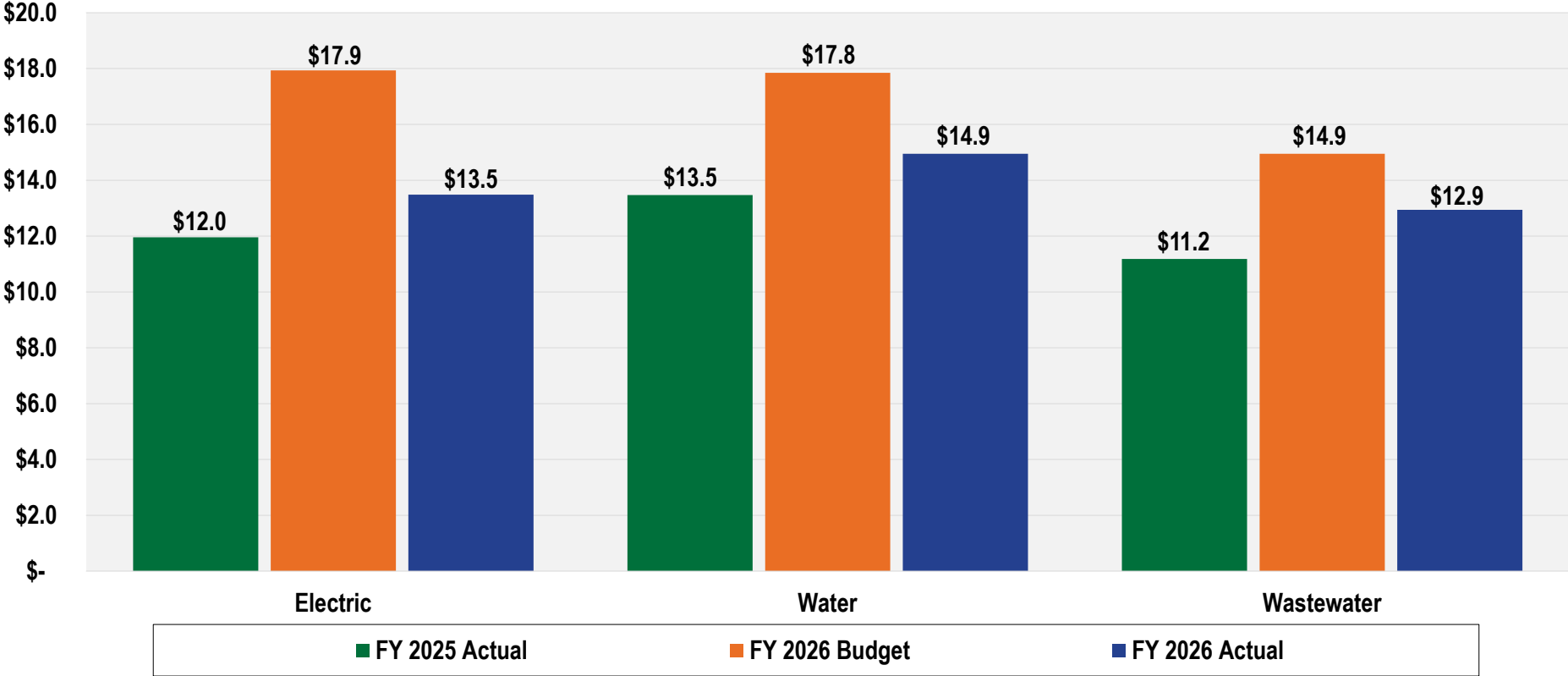
+

Core Values

Safety, Team, Integrity, Culture, and Stewardship

Operating Expenses* by LOB

March 2026 YTD – Amounts in Millions



*Excludes purchased power, purchased water, and depreciation expense. Includes Support Services Allocation.

Mission

Strengthening our community by providing resilient essential services



Vision

Be a trusted community partner dedicated to excellence in service

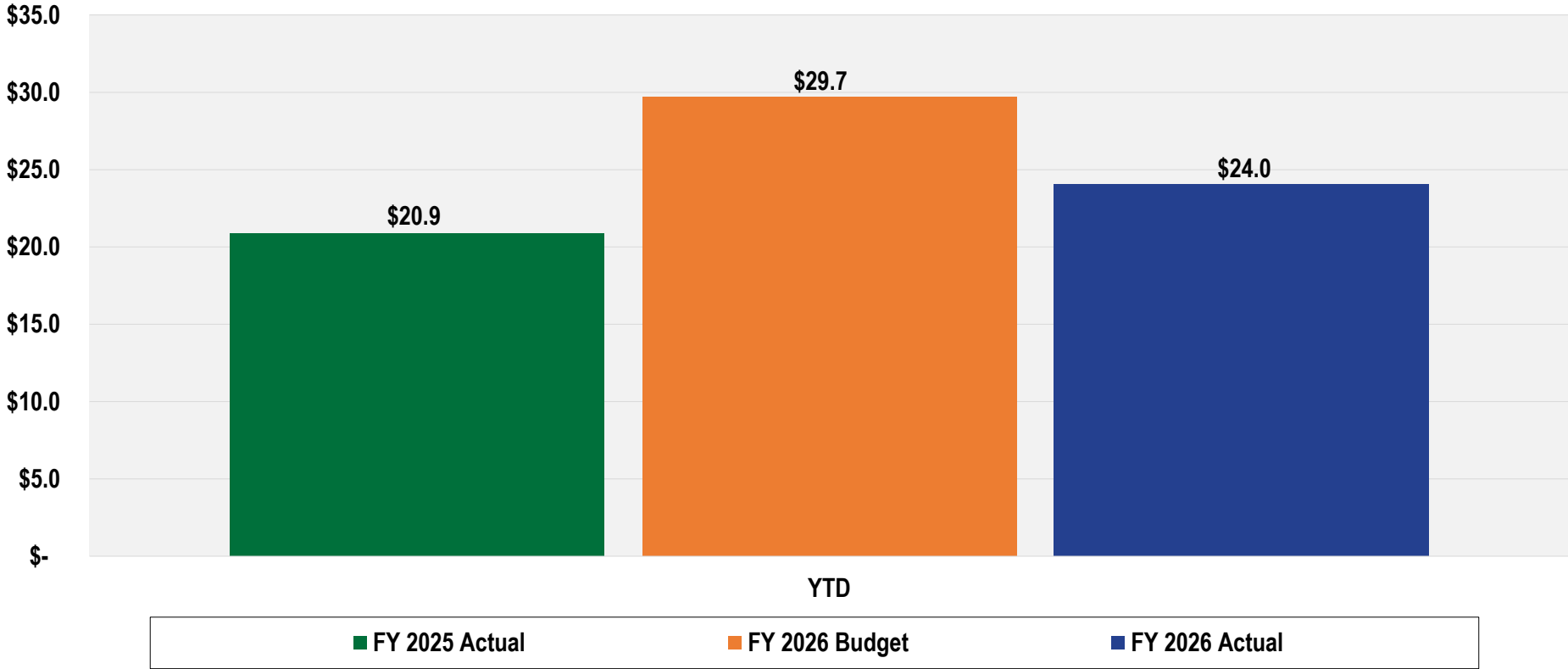


Core Values

Safety, Team, Integrity, Culture, and Stewardship



Operating Expenses for Support Services March 2026 – Amounts in Millions



* Prior to allocation to each line of business.

Mission

Strengthening our community by providing resilient essential services

+

Vision

Be a trusted community partner dedicated to excellence in service

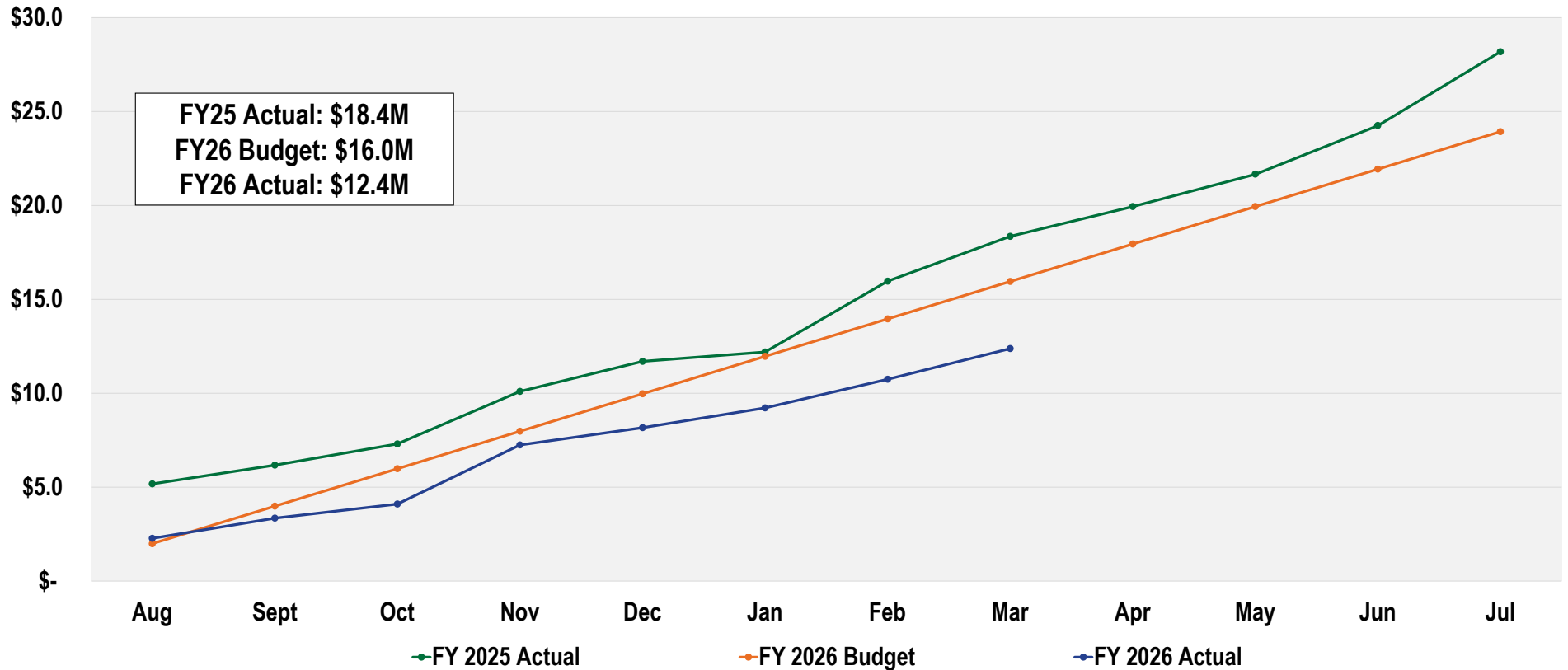
+

Core Values

Safety, Team, Integrity, Culture, and Stewardship

Impact Fee Revenue

March 2026 YTD – Amounts in Millions*



* Amounts shown are YTD for each month

Mission

Strengthening our community by providing resilient essential services



Vision

Be a trusted community partner dedicated to excellence in service



Core Values

Safety, Team, Integrity, Culture, and Stewardship

Power Supply Reserves Update

As of FY26 Budget	Power Stabilization Fund FY26	Power Stabilization Fund Full, FY28
Target	\$65M	\$95M
As of March 31, 2026	\$51M	\$51M

Mission

Strengthening our community by providing resilient essential services



Vision

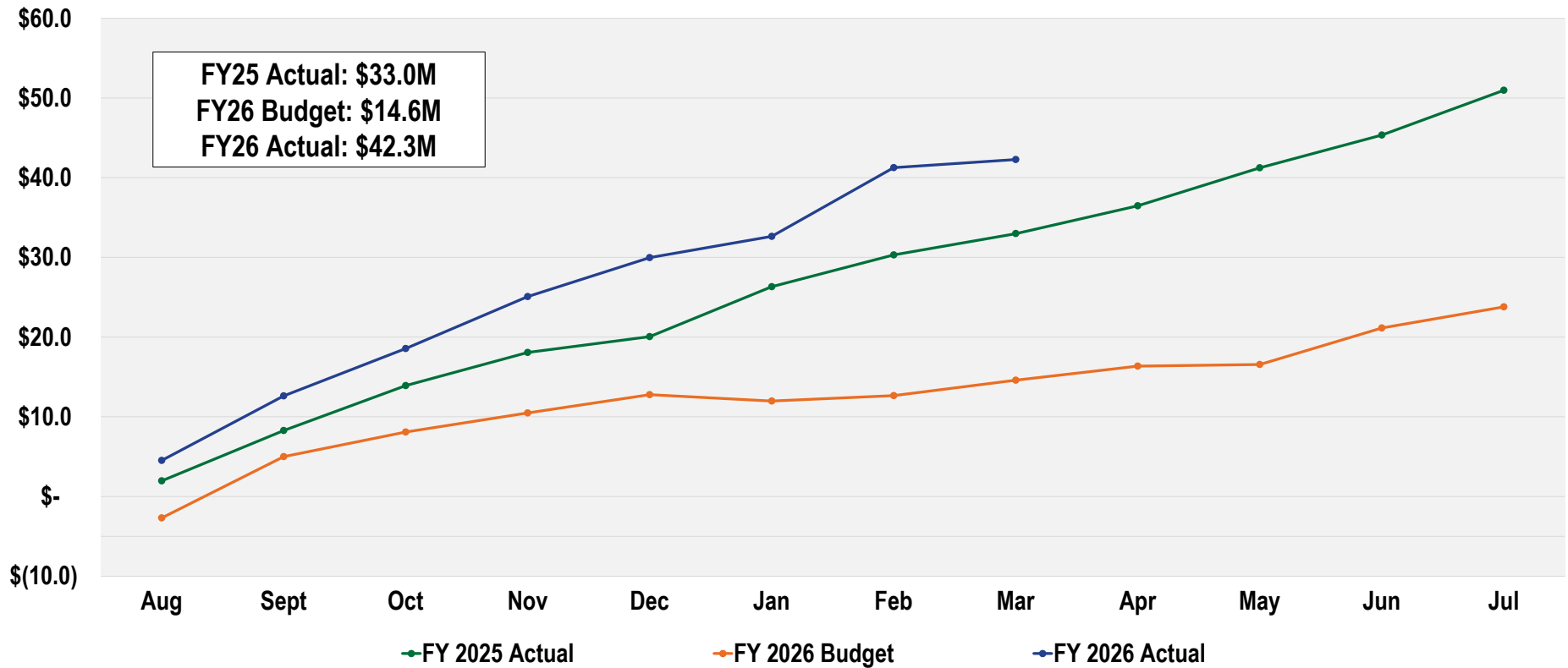
Be a trusted community partner dedicated to excellence in service



Core Values

Safety, Team, Integrity, Culture, and Stewardship

Net Operating Income March 2026– Amounts in Millions*



* Amounts shown are YTD for each month

Mission

Strengthening our community by providing resilient essential services



Vision

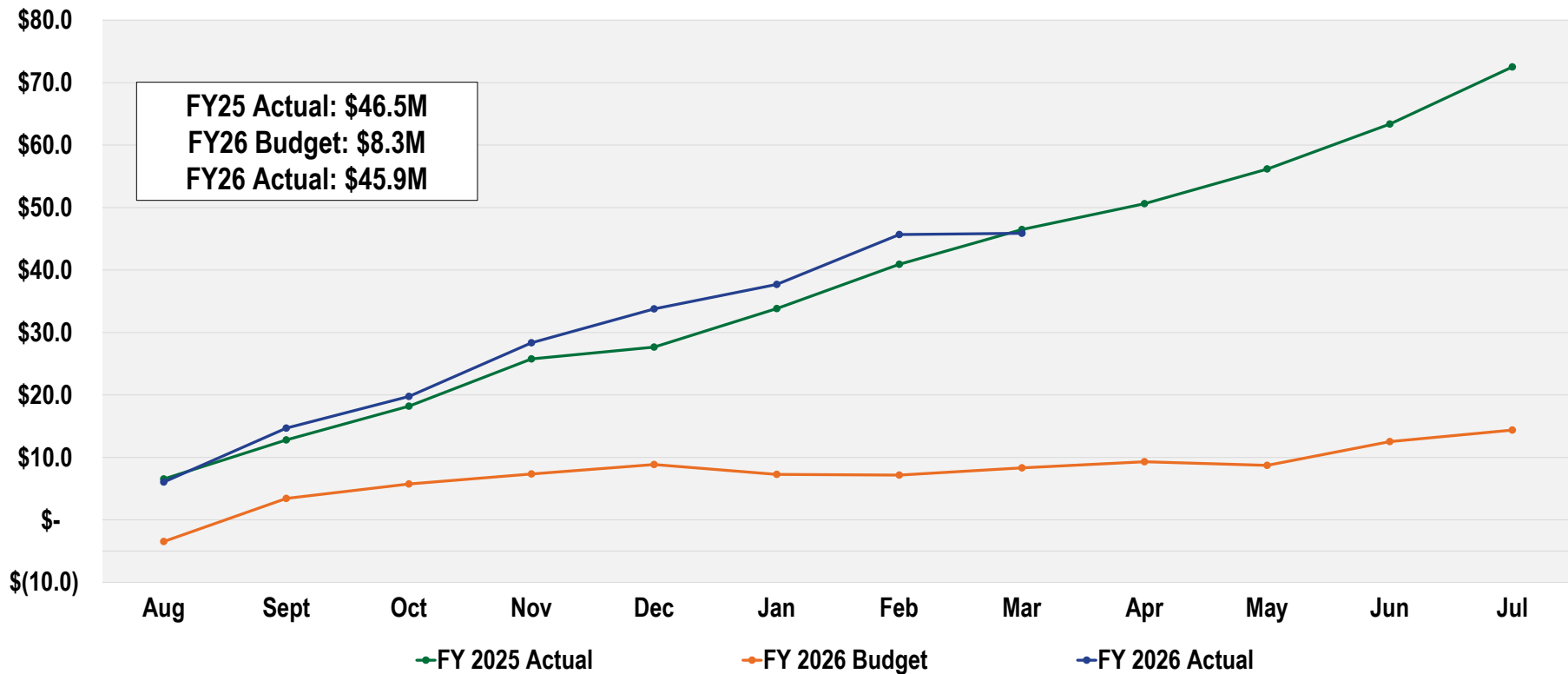
Be a trusted community partner dedicated to excellence in service



Core Values

Safety, Team, Integrity, Culture, and Stewardship

Change in Net Position After Contributions March 2026– Amounts in Millions*



* Amounts shown are YTD for each month

Mission

Strengthening our community by providing resilient essential services



Vision

Be a trusted community partner dedicated to excellence in service

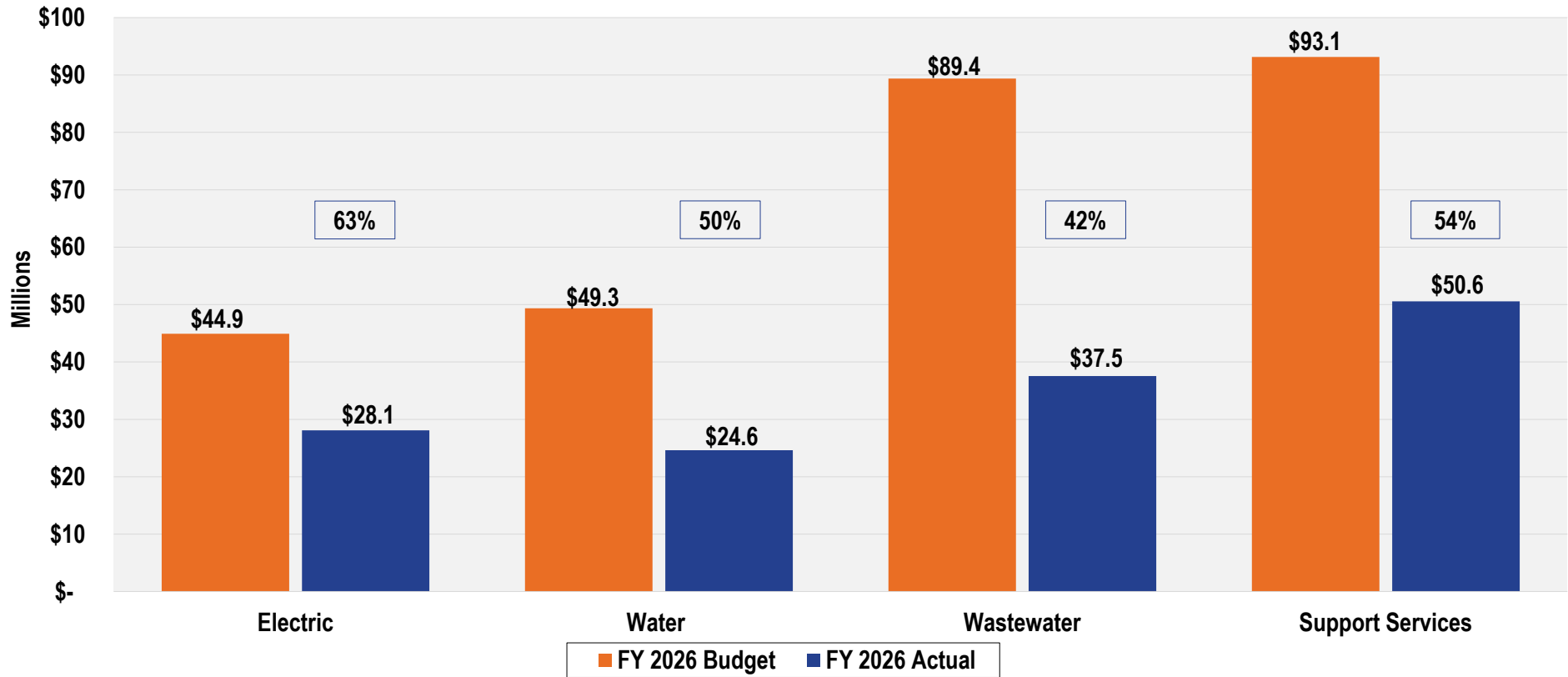


Core Values

Safety, Team, Integrity, Culture, and Stewardship

Capital Project Expenditures March 2026 YTD – Amounts in Millions*

67% of the Fiscal Year Elapsed



Mission

Strengthening our community by providing resilient essential services



Vision

Be a trusted community partner dedicated to excellence in service



Core Values

Safety, Team, Integrity, Culture, and Stewardship



Questions?

Mission

Strengthening our community by providing resilient essential services

+

Vision

Be a trusted community partner dedicated to excellence in service

+

Core Values

Safety, Team, Integrity, Culture, and Stewardship

