

# Water CCN Mapping Project - Decertification of Three Areas

Michael G. Short, P.E.

April 30, 2026



**NBU**® NEW BRAUNFELS  
UTILITIES

# Overview

- CCN Mapping Project
- Areas for Decertification
- Recommendations
- Next Steps

## Mission

Strengthening our community by providing resilient essential services

+

## Vision

Be a trusted community partner dedicated to excellence in service

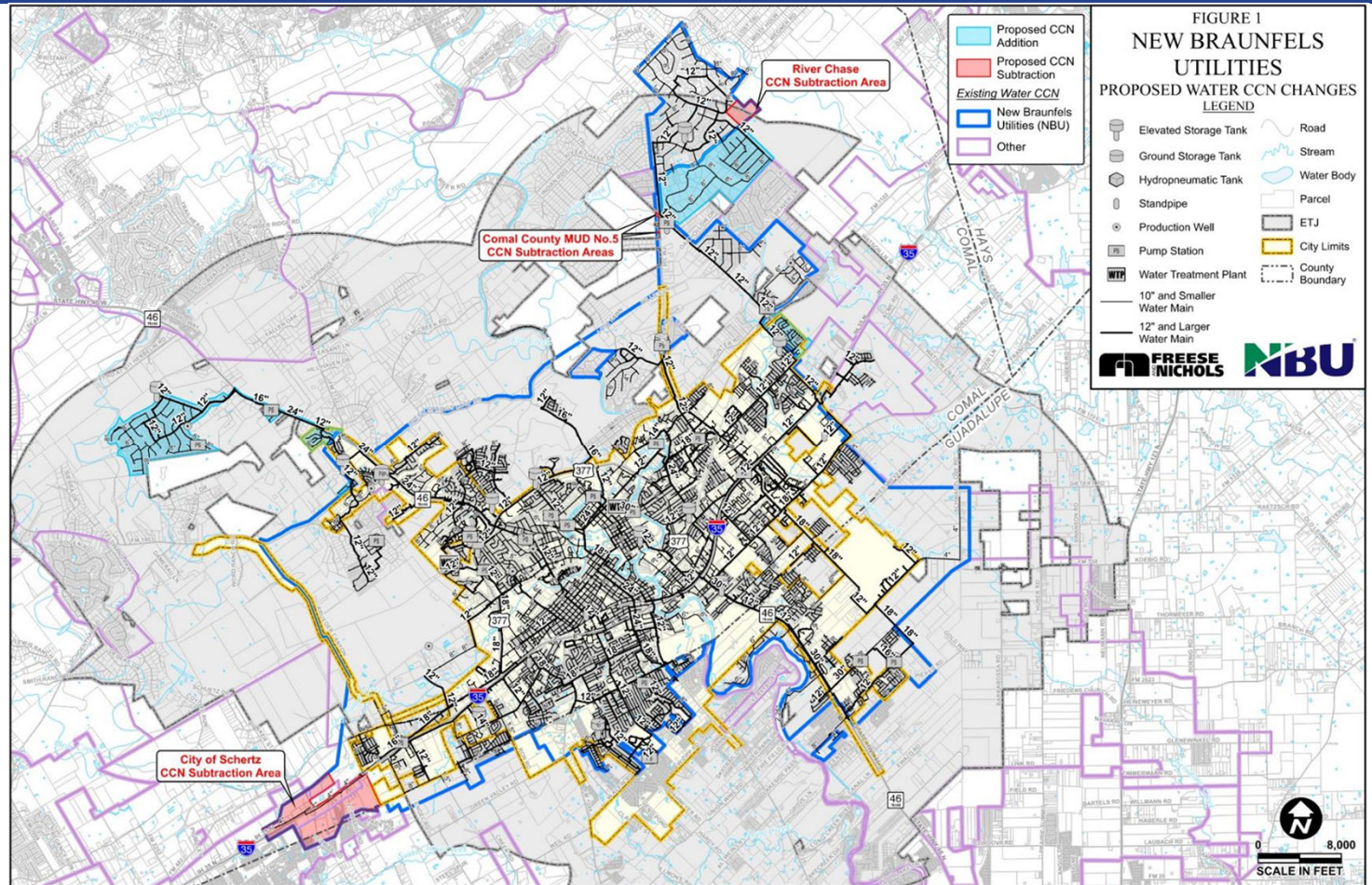
+

## Core Values

Safety, Team, Integrity, Culture, and Stewardship

# Areas of Decertification

Overall  
Detail of  
Water CCN  
Mapping  
Project



## Mission

Strengthening our community by providing resilient essential services

+

## Vision

Be a trusted community partner dedicated to excellence in service

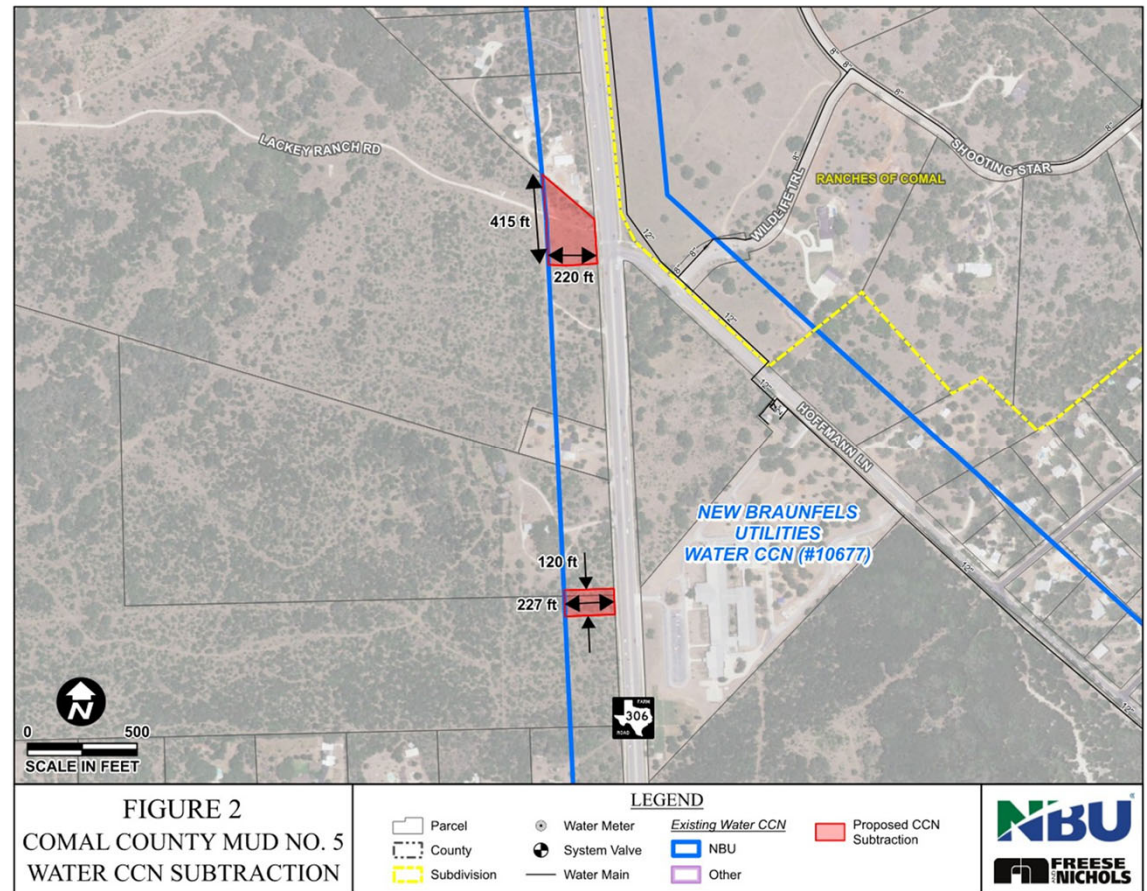
+

## Core Values

Safety, Team, Integrity, Culture, and Stewardship

# Areas of Decertification

- Areas 1 & 2:
  - Will be Located within Comal County MUD 5
  - Will be served by the MUD
  - NBU does not provide service and does not plan to extend service
  - Decertification aligns CCN with actual service provider



## Mission

Strengthening our community by providing resilient essential services



## Vision

Be a trusted community partner dedicated to excellence in service

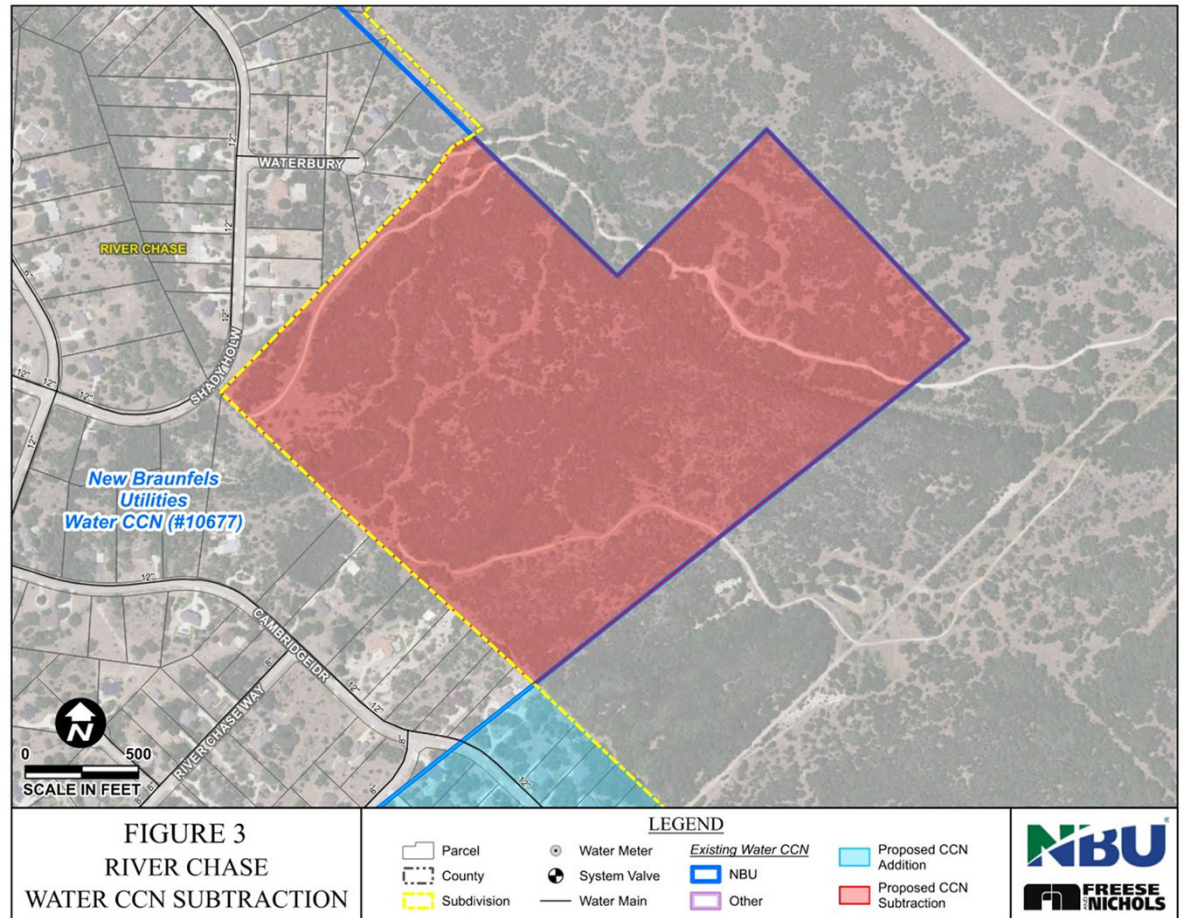


## Core Values

Safety, Team, Integrity, Culture, and Stewardship

# Areas of Decertification

- Areas 3:
  - No public water is currently serving the area
  - NBU cannot practically extend service due to surrounding development
  - Decertification removes an impractical service obligation



## Mission

Strengthening our community by providing resilient essential services

## Vision

Be a trusted community partner dedicated to excellence in service

## Core Values

Safety, Team, Integrity, Culture, and Stewardship

**NBU** NEW BRAUNFELS  
UTILITIES

# Recommendation

- Staff recommends the submittal of the application to the PUC to amend the Water CCN as proposed decertifying areas 1, 2, and 3.
- Why decertification is appropriate:
  - It is an administrative correction to reflect real-world service conditions
  - It reduces confusion for developers, customers, and regulators
  - It ensures CCN boundaries match NBU's long-term service planning
  - It is consistent with the purpose of the CCN and Service Area Policy Project

## Mission

Strengthening our community by providing resilient essential services



## Vision

Be a trusted community partner dedicated to excellence in service



## Core Values

Safety, Team, Integrity, Culture, and Stewardship

## Next Steps

- Submit this amendment application upon Board approval
- Consider preparation of subsequent CCN amendments
  - Amend the water CCN where it overlaps with Schertz.
  - Update the overall water CCN.
  - Update the overall sewer CCN.
- Coordinate with PUC staff and affected entities as needed
- Return to the Board as each application is ready

### **Mission**

Strengthening our community by providing resilient essential services

+

### **Vision**

Be a trusted community partner dedicated to excellence in service

+

### **Core Values**

Safety, Team, Integrity, Culture, and Stewardship

**Questions?**