



# Financial Update

- March 2025 Financials

- Kimberly Huffman, Accounting Manager



# Board Financial Policy Compliance - March 2025 YTD

	FY 2024 Actual	FY 2025 Budget	Financial Policy	FY 2025 Actual*
<b>Debt to Capitalization (lower is better)</b>	41.1%	45.5%	≤55.0%	<b>38.8%</b>
<b>Debt Service Coverage (higher is better)</b>	5.14	4.71	≥2.40	<b>4.86</b>
<b>Days Cash on Hand (higher is better)</b>	208	224	≥140	<b>275</b>
<b>Days Liquidity on Hand (higher is better)</b>	495	N/A	N/A	<b>450</b>

\* Amounts are calculated by annualizing the YTD results

## Mission

Strengthening our community by providing resilient essential services



## Vision

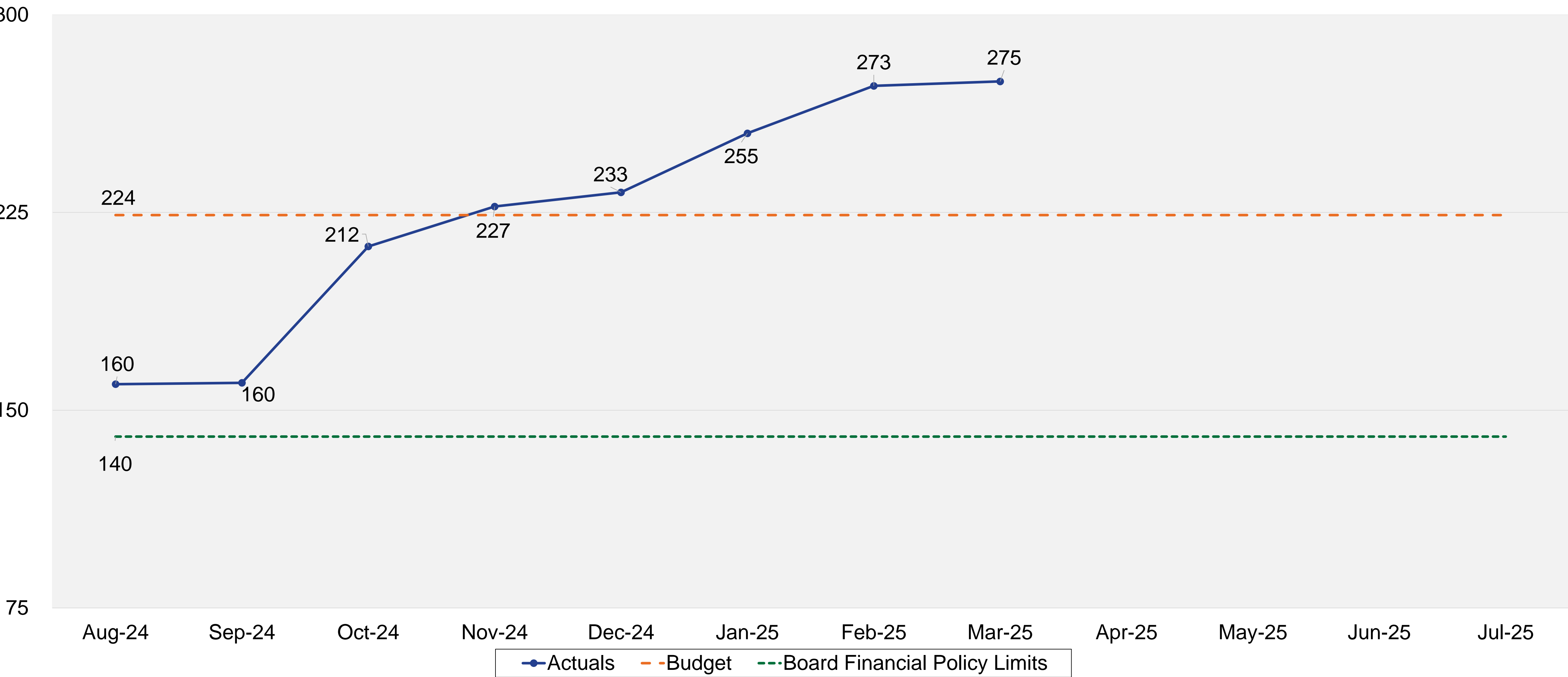
Be a trusted community partner dedicated to excellence in service



## Core Values

Safety, Team, Integrity, Culture, and Stewardship

# Days Cash on Hand - March 2025 YTD



**Mission**

Strengthening our community by providing resilient essential services

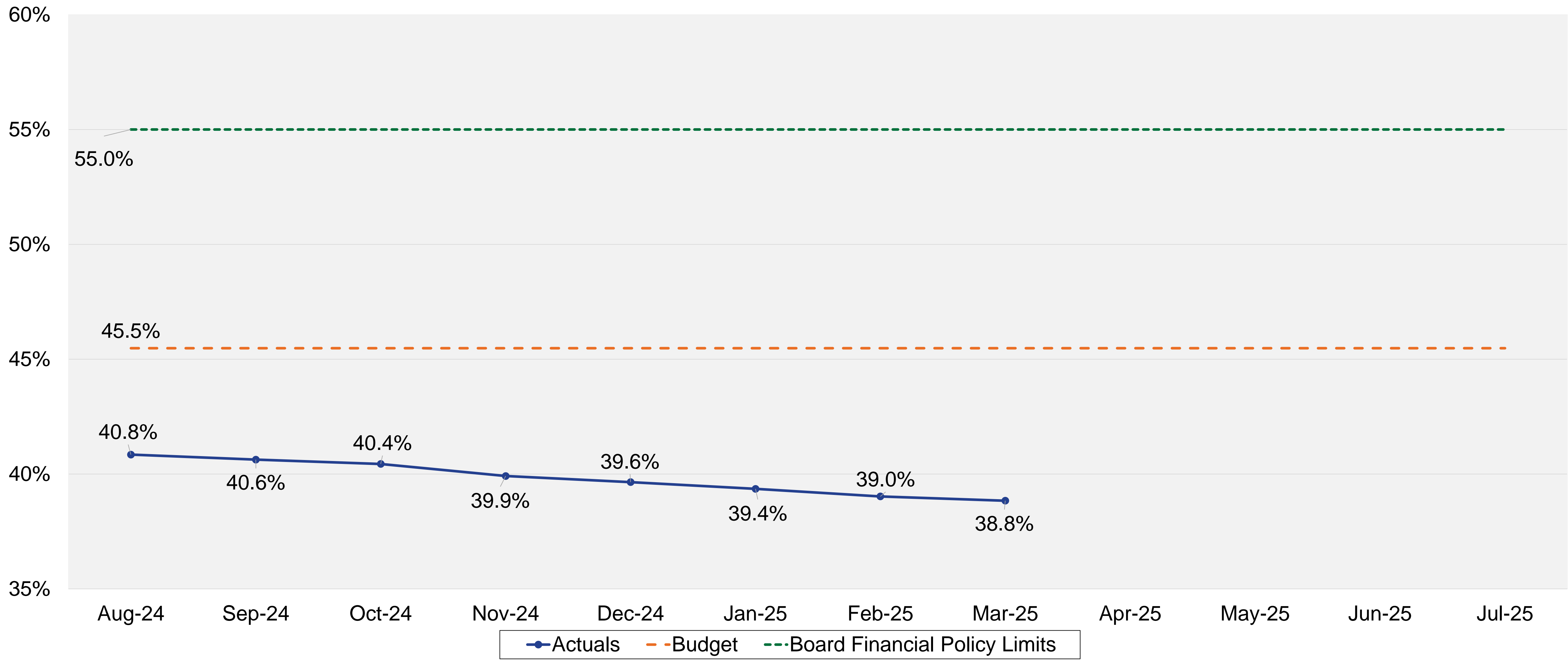
**+ Vision**

Be a trusted community partner dedicated to excellence in service

**+ Core Values**

Safety, Team, Integrity, Culture, and Stewardship

# Debt to Capitalization - March 2025 YTD



**Mission**

Strengthening our community by providing resilient essential services

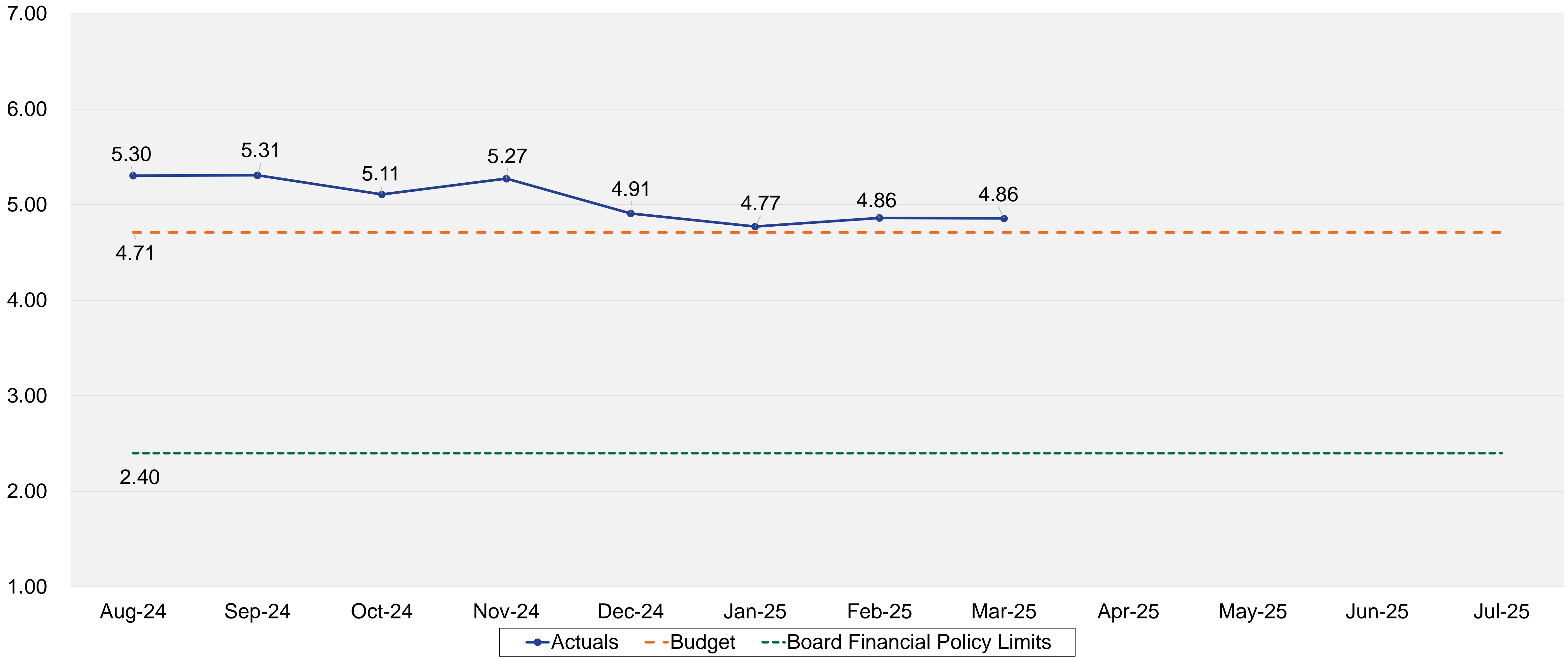
**+ Vision**

Be a trusted community partner dedicated to excellence in service

**+ Core Values**

Safety, Team, Integrity, Culture, and Stewardship

# Debt Service Coverage - March 2025 YTD



**Mission**

Strengthening our community by providing resilient essential services



**Vision**

Be a trusted community partner dedicated to excellence in service



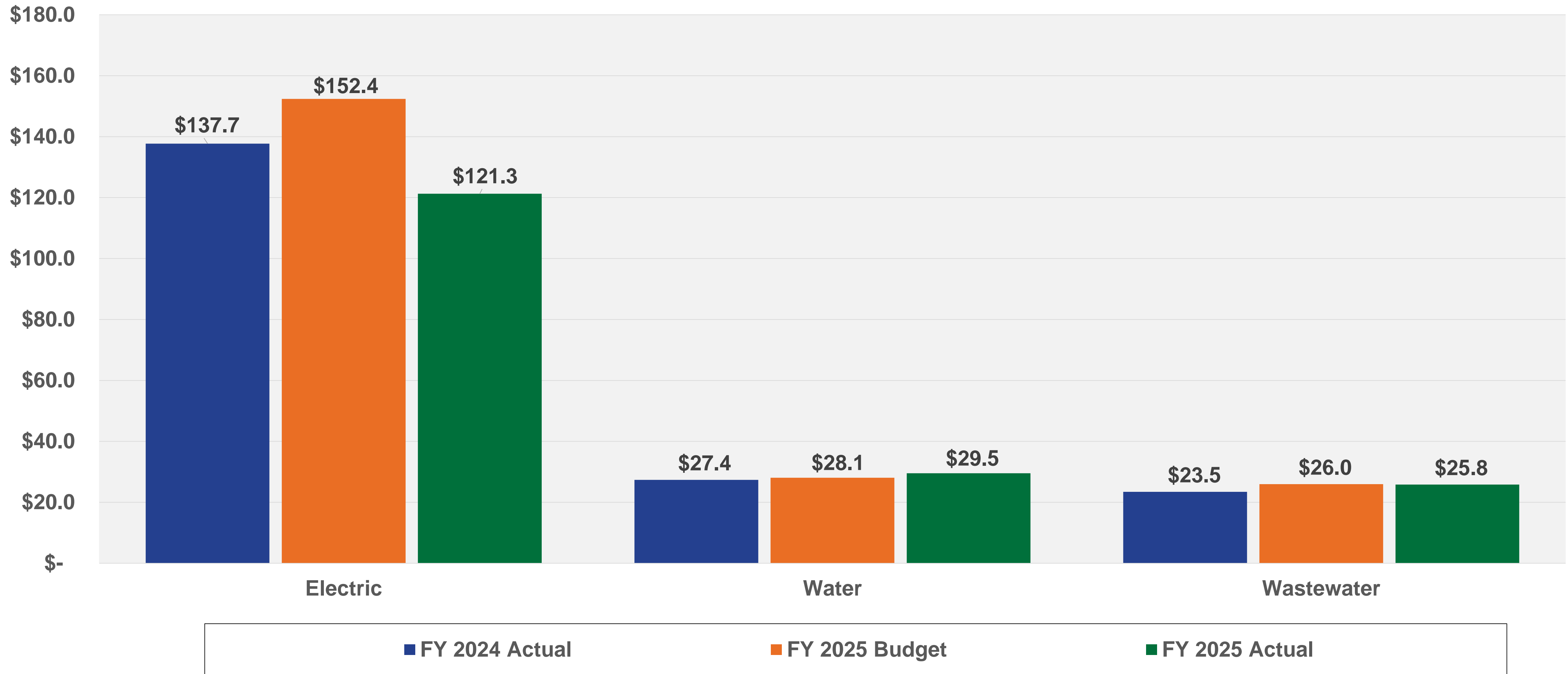
**Core Values**

Safety, Team, Integrity, Culture, and Stewardship



# Operating Revenue by LOB

## March 2025 YTD – Amounts in Millions



### Mission

Strengthening our community by providing resilient essential services



### Vision

Be a trusted community partner dedicated to excellence in service

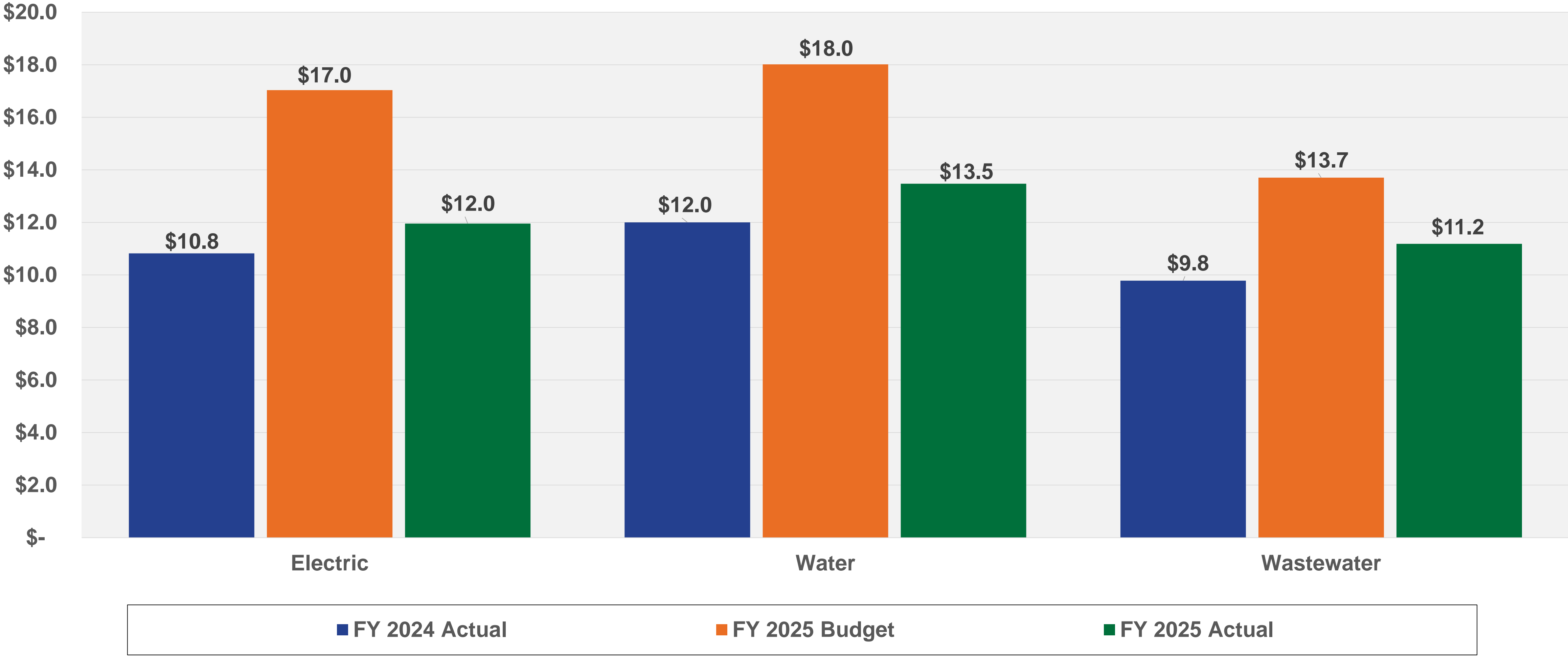


### Core Values

Safety, Team, Integrity, Culture, and Stewardship

# Operating Expenses\* by LOB

## March 2025 YTD – Amounts in Millions



\*Excludes purchased power, purchased water, and depreciation expense

**Mission**

Strengthening our community by providing resilient essential services

**+ Vision**

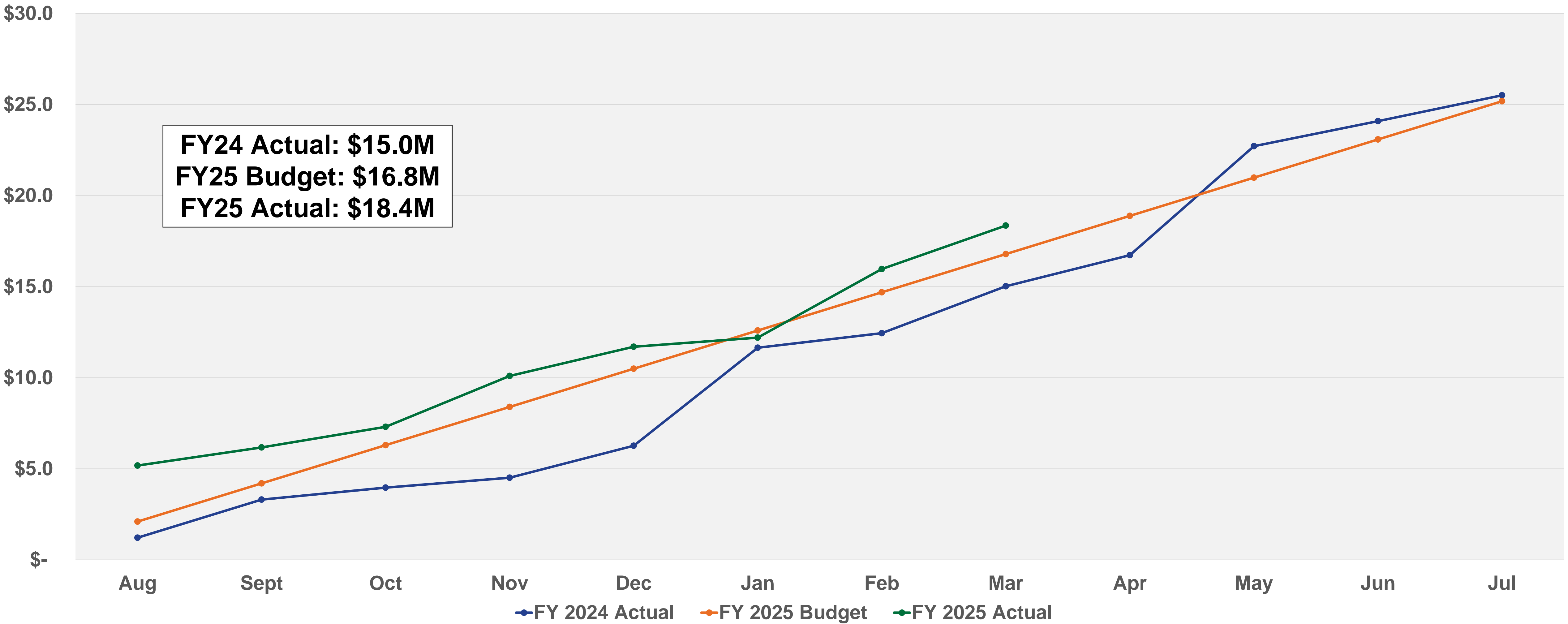
Be a trusted community partner dedicated to excellence in service

**+ Core Values**

Safety, Team, Integrity, Culture, and Stewardship

# Impact Fee Revenues

## March 2025 YTD – Amounts in Millions\*



\* Amounts shown are YTD for each month

**Mission**

Strengthening our community by providing resilient essential services



**Vision**

Be a trusted community partner dedicated to excellence in service



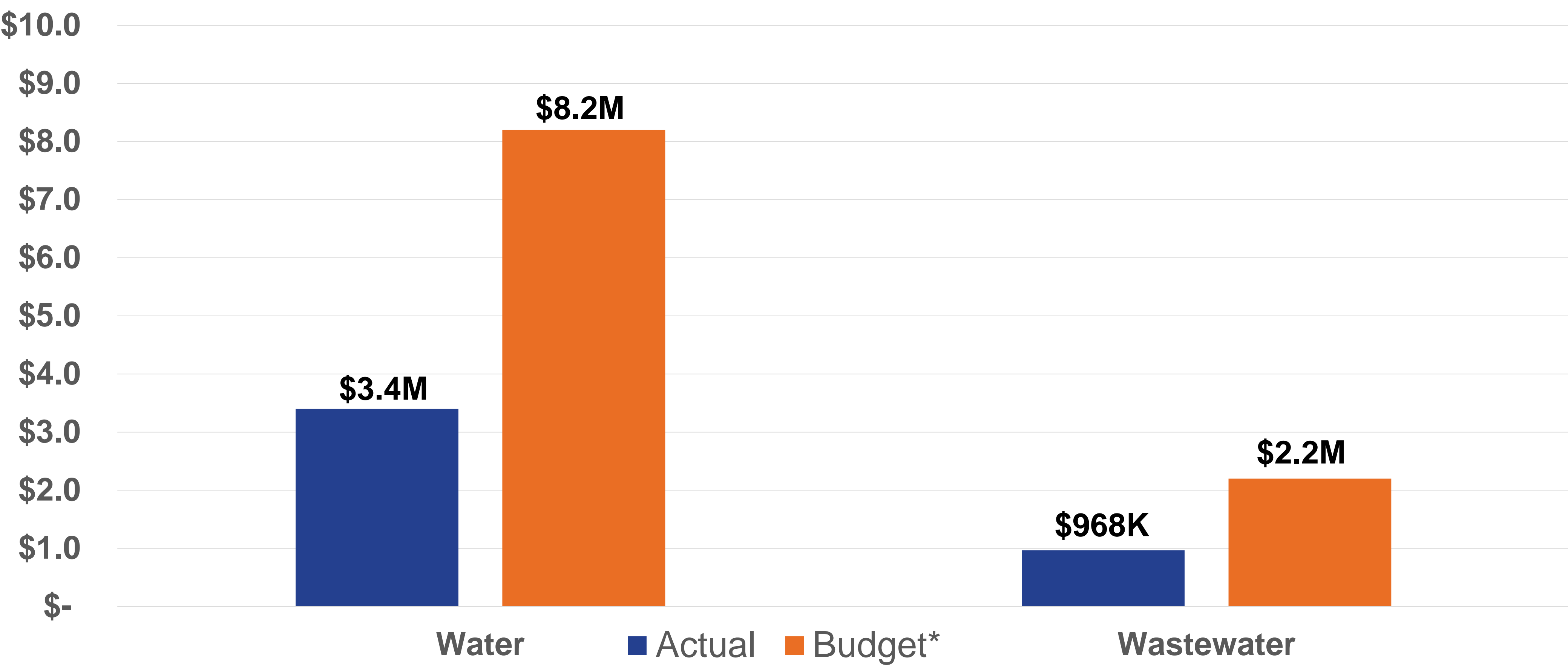
**Core Values**

Safety, Team, Integrity, Culture, and Stewardship





# Impact Fees Collections-Program E Update – March 2025- Amount in Millions



\* Fiscal year budget amount

**Mission**

Strengthening our community by providing resilient essential services

**+ Vision**

Be a trusted community partner dedicated to excellence in service

**+ Core Values**

Safety, Team, Integrity, Culture, and Stewardship

# Power Supply Reserves Update

As of FY25 Budget	Power Stabilization Fund FY25	Power Stabilization Fund Full, FY28
Target	\$50M	\$95M
As of March 31, 2025	\$45M	\$45M

**Mission**

Strengthening our community by providing resilient essential services



**Vision**

Be a trusted community partner dedicated to excellence in service

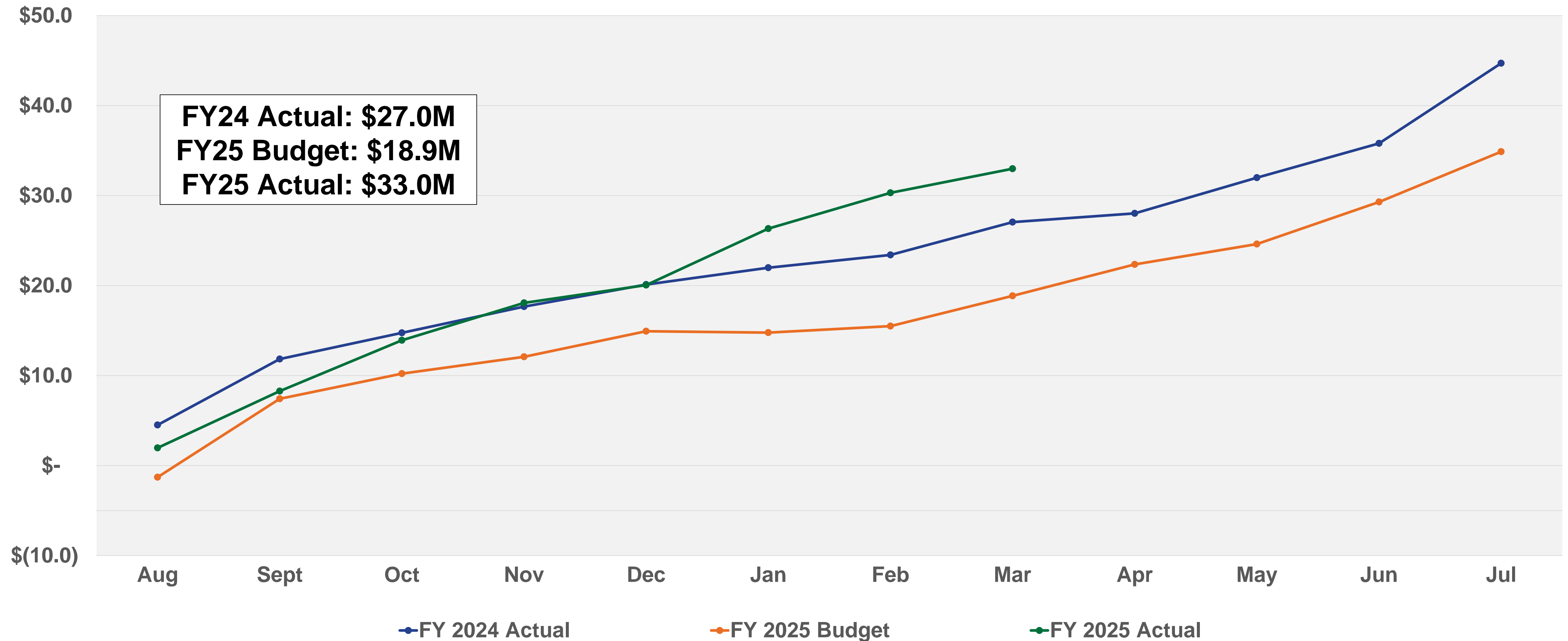


**Core Values**

Safety, Team, Integrity, Culture, and Stewardship

# Net Operating Income

## March 2025– Amounts in Millions\*



\* Amounts shown are YTD for each month

### Mission

Strengthening our community by providing resilient essential services



### Vision

Be a trusted community partner dedicated to excellence in service



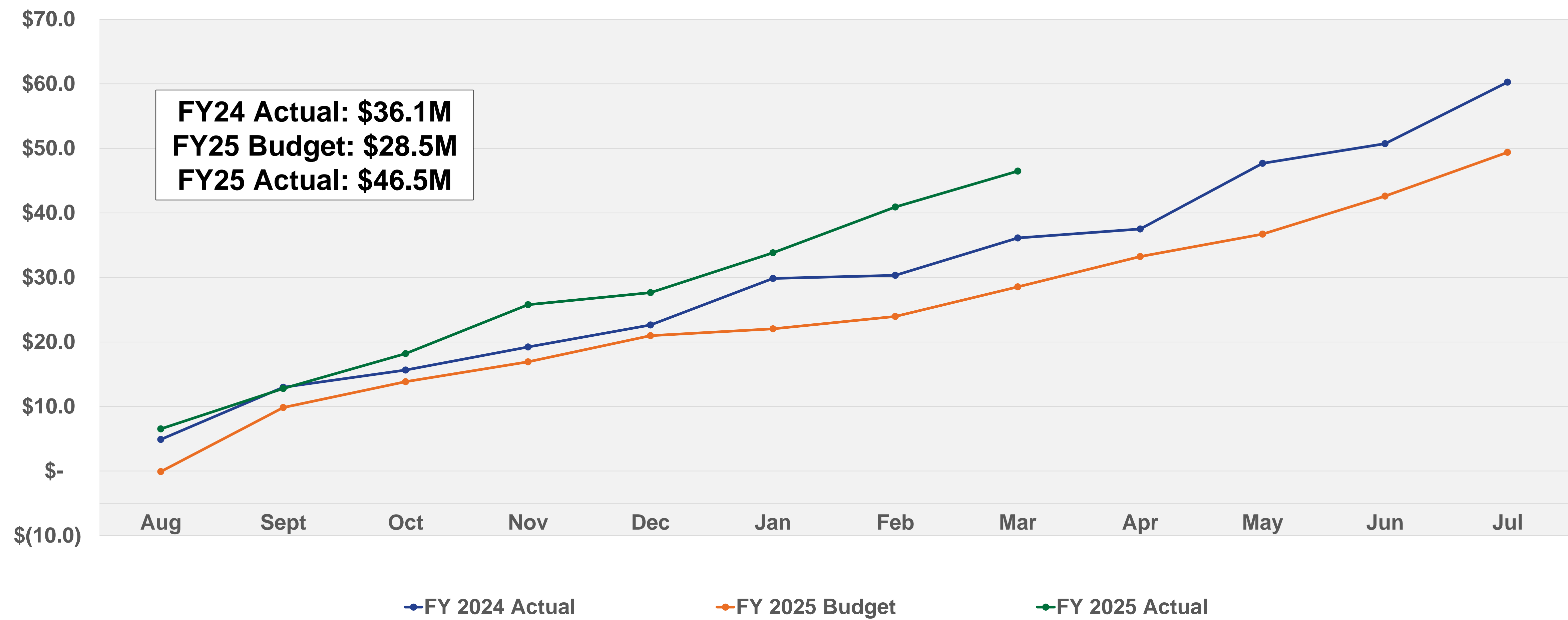
### Core Values

Safety, Team, Integrity, Culture, and Stewardship



# Change in Net Position After Contributions

## March 2025– Amounts in Millions\*



\* Amounts shown are YTD for each month

**Mission**

Strengthening our community by providing resilient essential services



**Vision**

Be a trusted community partner dedicated to excellence in service

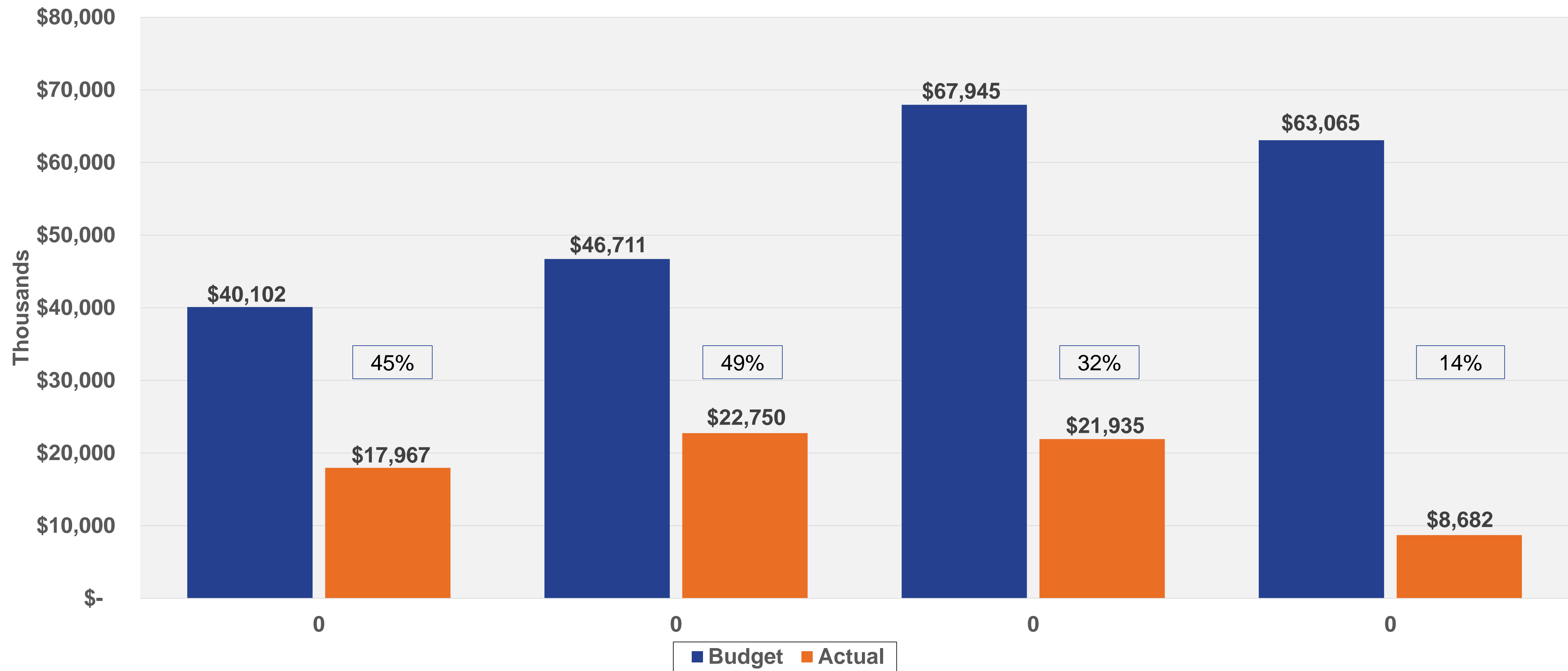


**Core Values**

Safety, Team, Integrity, Culture, and Stewardship

# Capital Project Expenditures

## March 2025 YTD – Amounts in Thousands



### Mission

Strengthening our community by providing resilient essential services



### Vision

Be a trusted community partner dedicated to excellence in service



### Core Values

Safety, Team, Integrity, Culture, and Stewardship

# Questions?

## **Mission**

Strengthening our community by providing resilient essential services

+

## **Vision**

Be a trusted community partner dedicated to excellence in service

+

## **Core Values**

Safety, Team, Integrity, Culture, and Stewardship