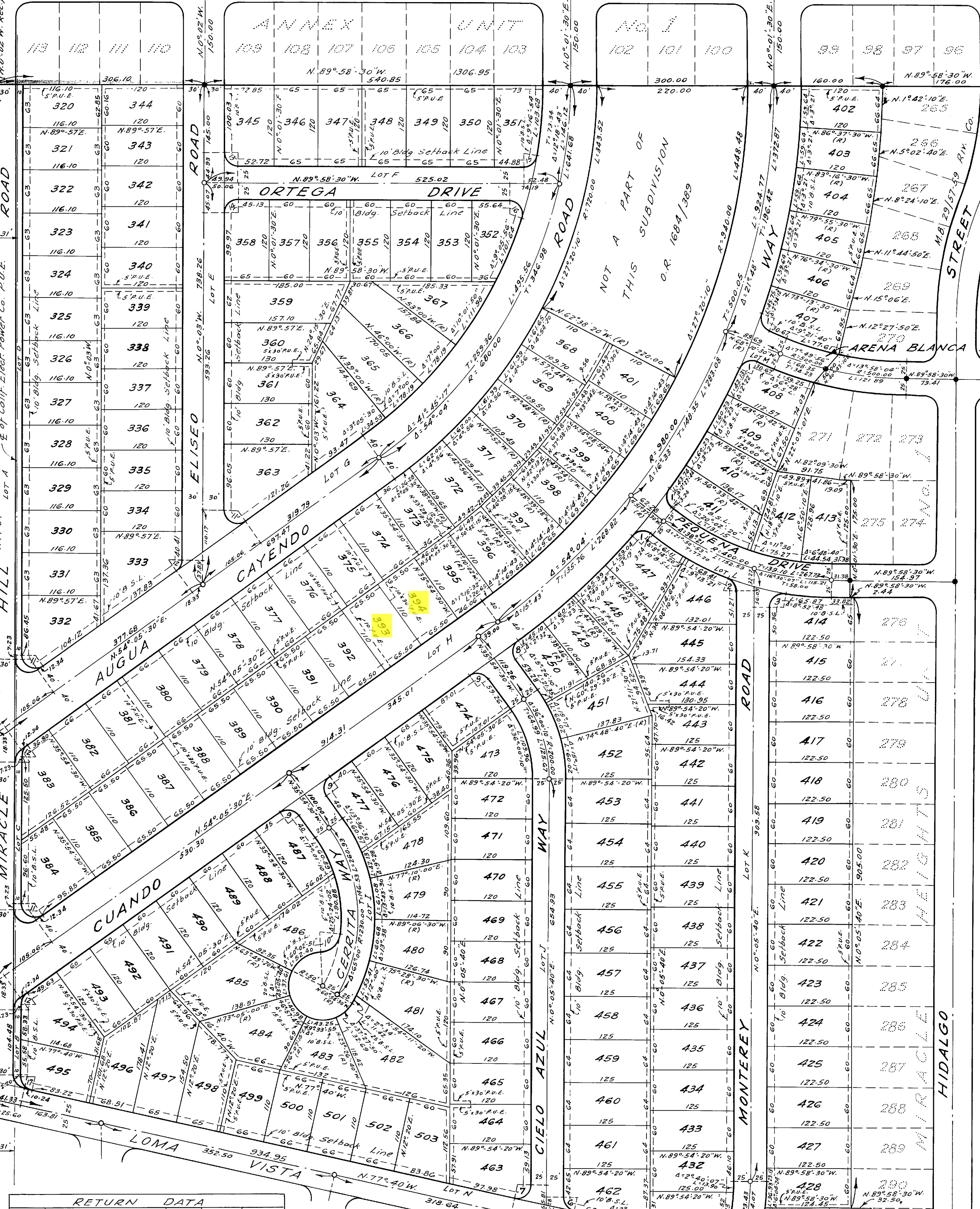


30/41

M.B. 27/22-24 Riv. Co.

DESERT HOT SPRINGS

HACIENDA DRIVE



RETURN DATA				
No.	Δ	R	T	L
1	87° 31' 12"	20	19.15	30.55
2	69° 10' 51"	20	13.79	24.15
3	98° 48' 38"	20	23.34	34.49
4	84° 42' 56"	20	18.24	29.57
5	95° 38' 26"	20	22.07	33.38
6	77° 45' 40"	20	16.13	27.14
7	102° 14' 20"	20	24.80	35.69
8	89° 40' 12"	20	19.89	31.30
9	90° 00' 00"	20	20.00	31.42
10	79° 42' 43"	30	25.05	41.74
11	125° 51' 30"	20	39.13	43.93
12	54° 08' 30"	20	10.22	18.90
13	89° 55' 30"	20	19.97	31.39
14	90° 04' 30"	20	20.03	31.44
15	80° 43' 06"	20	17.00	28.18
16	107° 50' 44"	20	27.45	37.65
17	77° 37' 00"	20	16.09	27.09

- Continued on sheet 3
- ENGINEER'S NOTES:
1. Basis of Bearings is the centerline of HACIENDA DRIVE (N. 89° 58' 30" W.) as shown on map of DESERT HOT SPRINGS ANNEX UNIT No. 1 as filed in Book 27 of Maps at pages 22-24 thereof; records of Riverside County.
 2. Found 3/4" I.P. at all points shown thus • unless otherwise noted.
 3. Set 3/4" I.P. tagged R.E. 9876 at all points shown thus o unless otherwise noted.
 4. Set 2"x2" Redwood stakes tagged R.E. 9876 at all lot corners unless otherwise noted.
 5. B.S.L. denotes Building Setback Line

—BY—
ALBERT A. WEBB ASSOCIATES
CIVIL ENGINEERS
SEPTEMBER 1956

CR 91-40 LOT 584