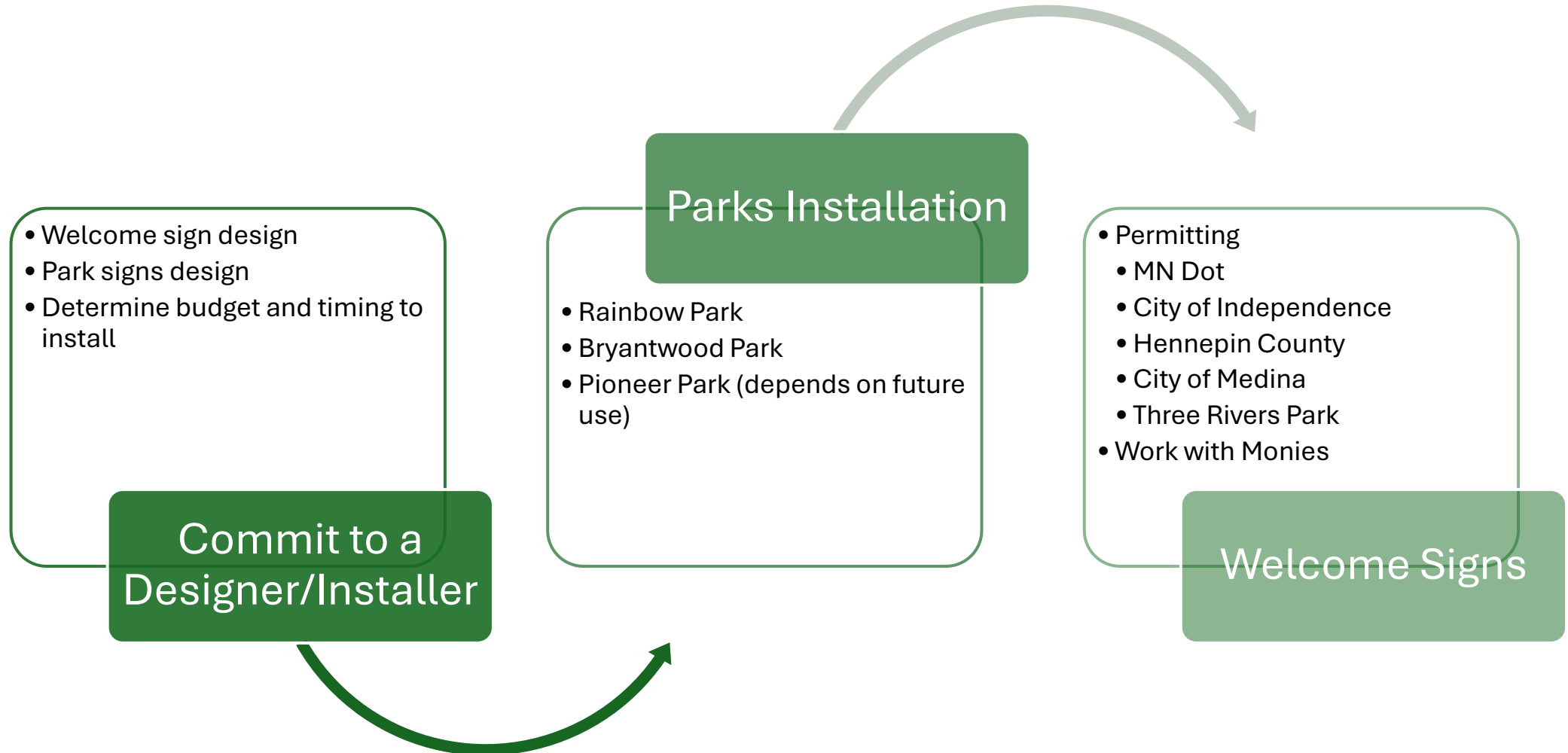


City Rebranding City Signage Project

City Sign Replacement Next Steps



Designer process

- Design concepts
- At least two rounds of edits (based on committee feedback)
- Prepare/present final drawings with material specifications, finishes and pricing

Designers and Installers

Bolton and Menk

- Design cost \$16,000
- Current municipal engineer

Spectrum Sign

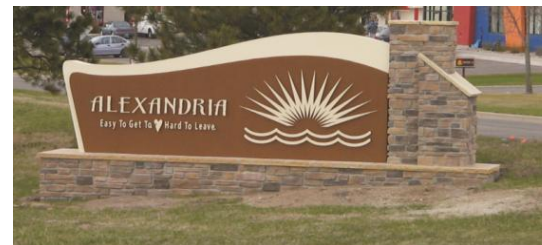
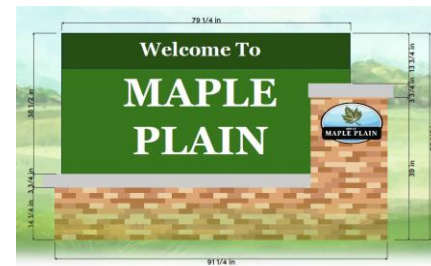
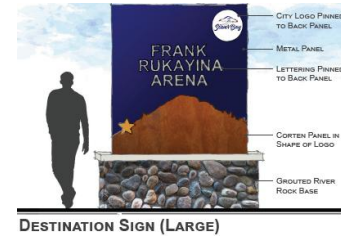
- Design cost \$3,000 (upfront)
- Aspirational in design concepts
- Experts in traditional masonry.

BMS Signs and Printing

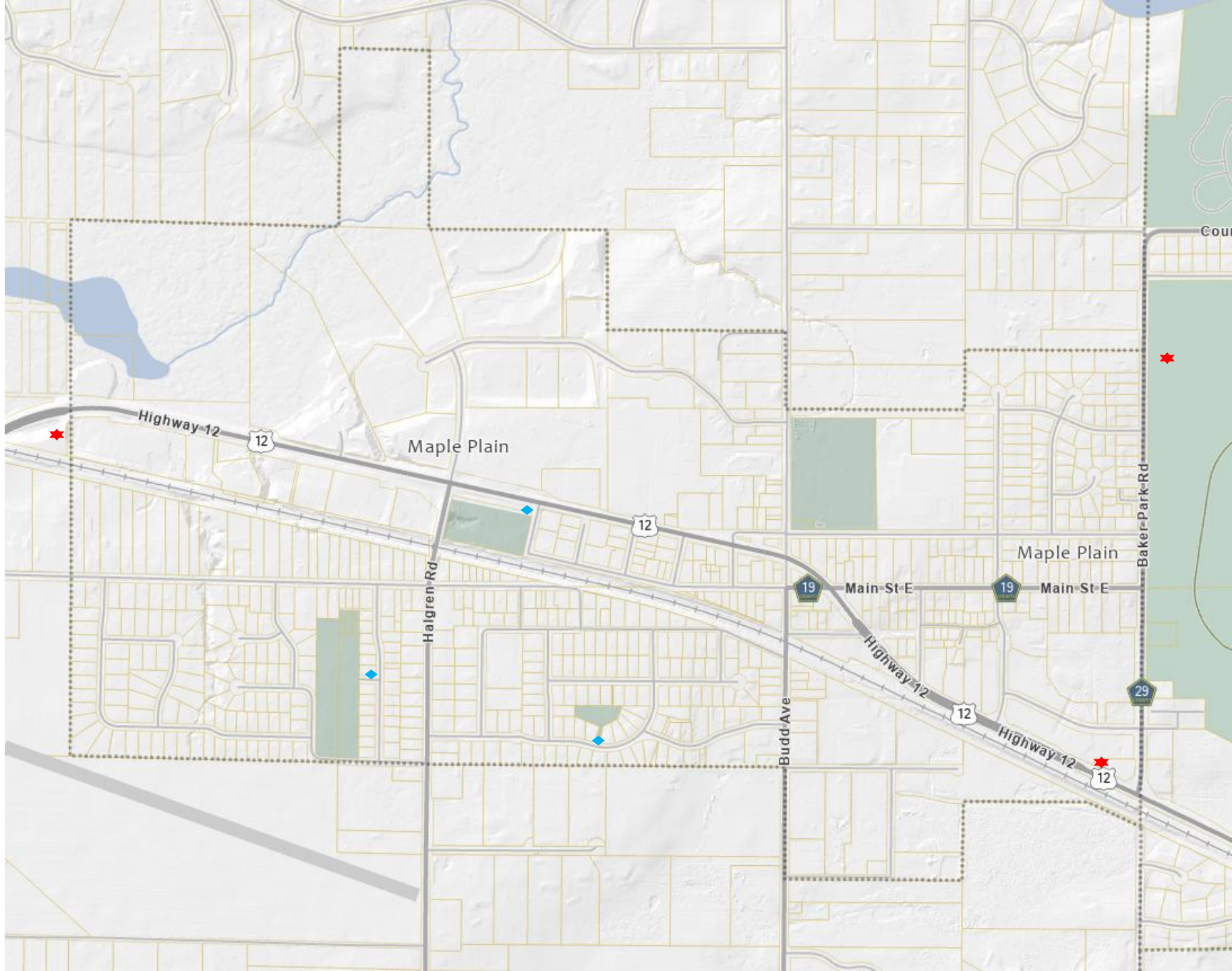
- Design cost incorporated in the final design.
- Will work with any material.
- Eager to work with the City. They already have mockups.

Scenic Sign Corporation

- Design cost incorporated in the final design
- Created the electric sign.
- Understands Maple Plain and is realistic with our space.



APPENDIX



Legend

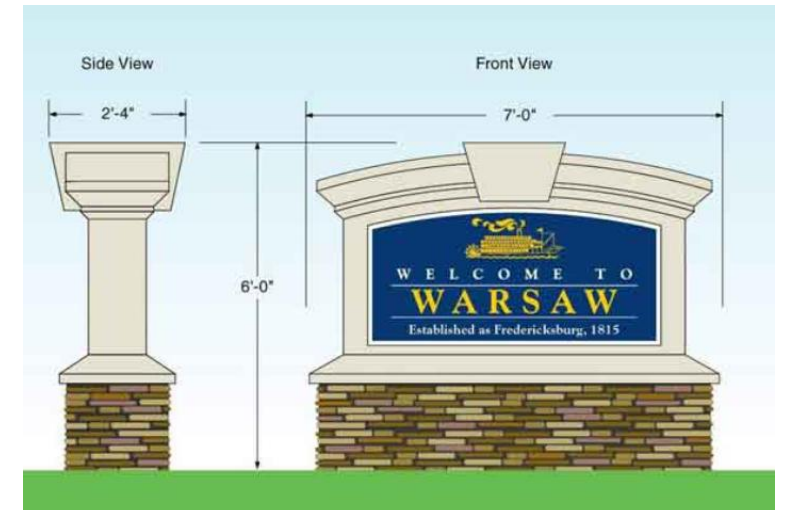
◆ = City Park Signs

★ = Welcome Signs

City Park Signs

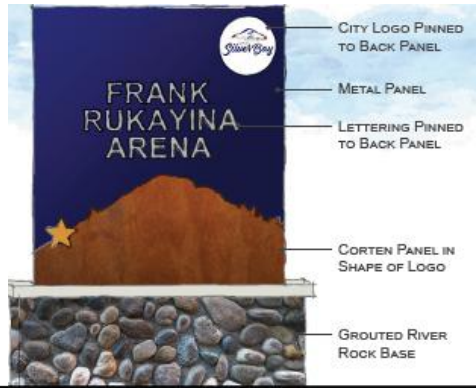


Welcome to the city signage

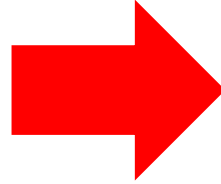


Community Signage

Welcome to Maple Plain Signs



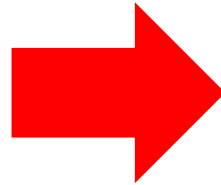
DESTINATION SIGN (LARGE)



City Park Signs



DESTINATION SIGN (SMALL)



Examples