

Conditional Zoning Map Amendment (CZ-23-03) Hidden Cove Holdings, LLC



Conditional Zoning Map Amendment (CZ-23-03) Hidden Cove Holdings, LLC



1230004002

SWEET BAY LN

REID HILL ROAD

1230006057

1230006060

1230006061

1230006058

1230006062

1230004069

TAILRACE DR

1230005049

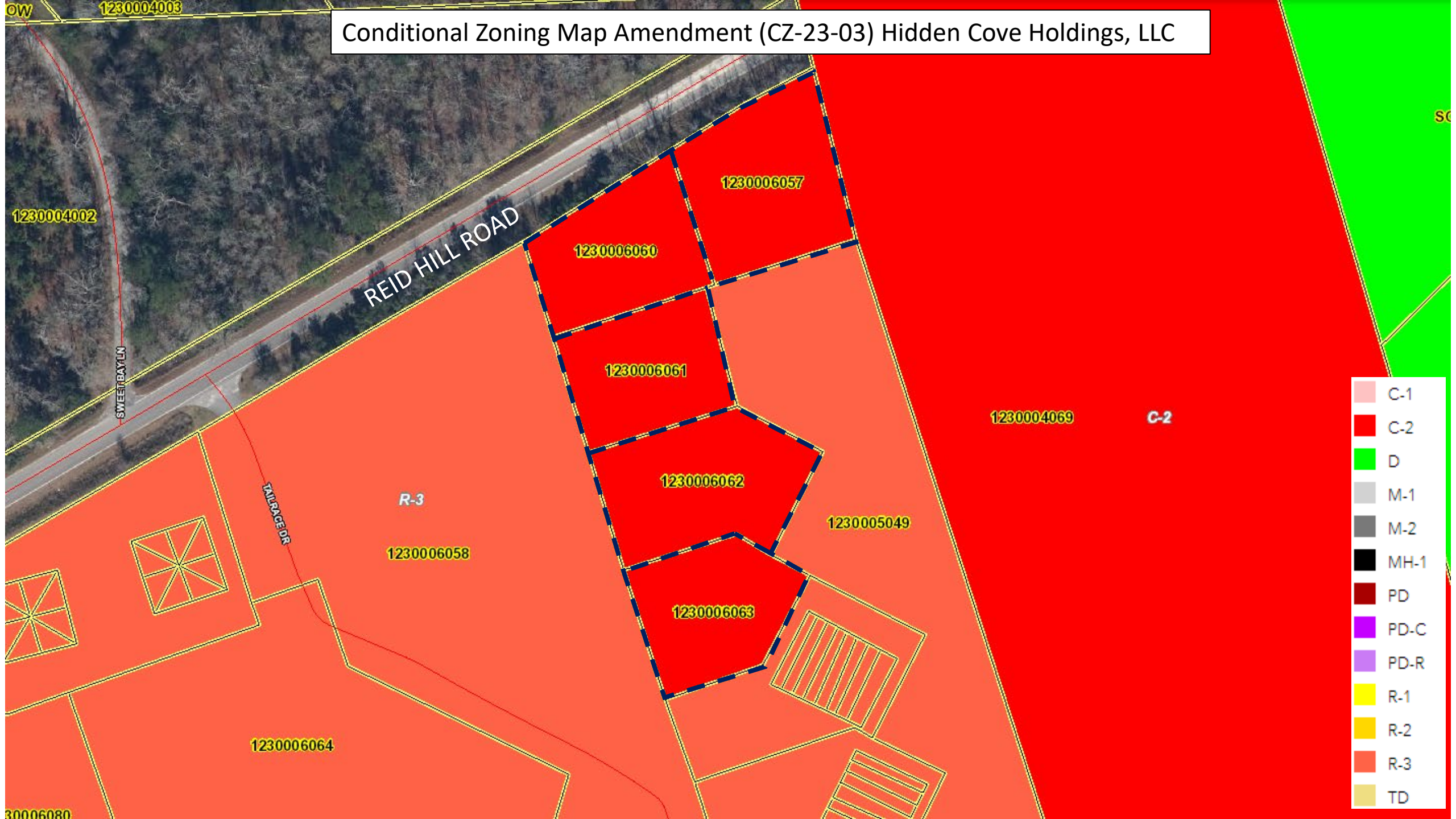
HPR

1230006063

1230006064

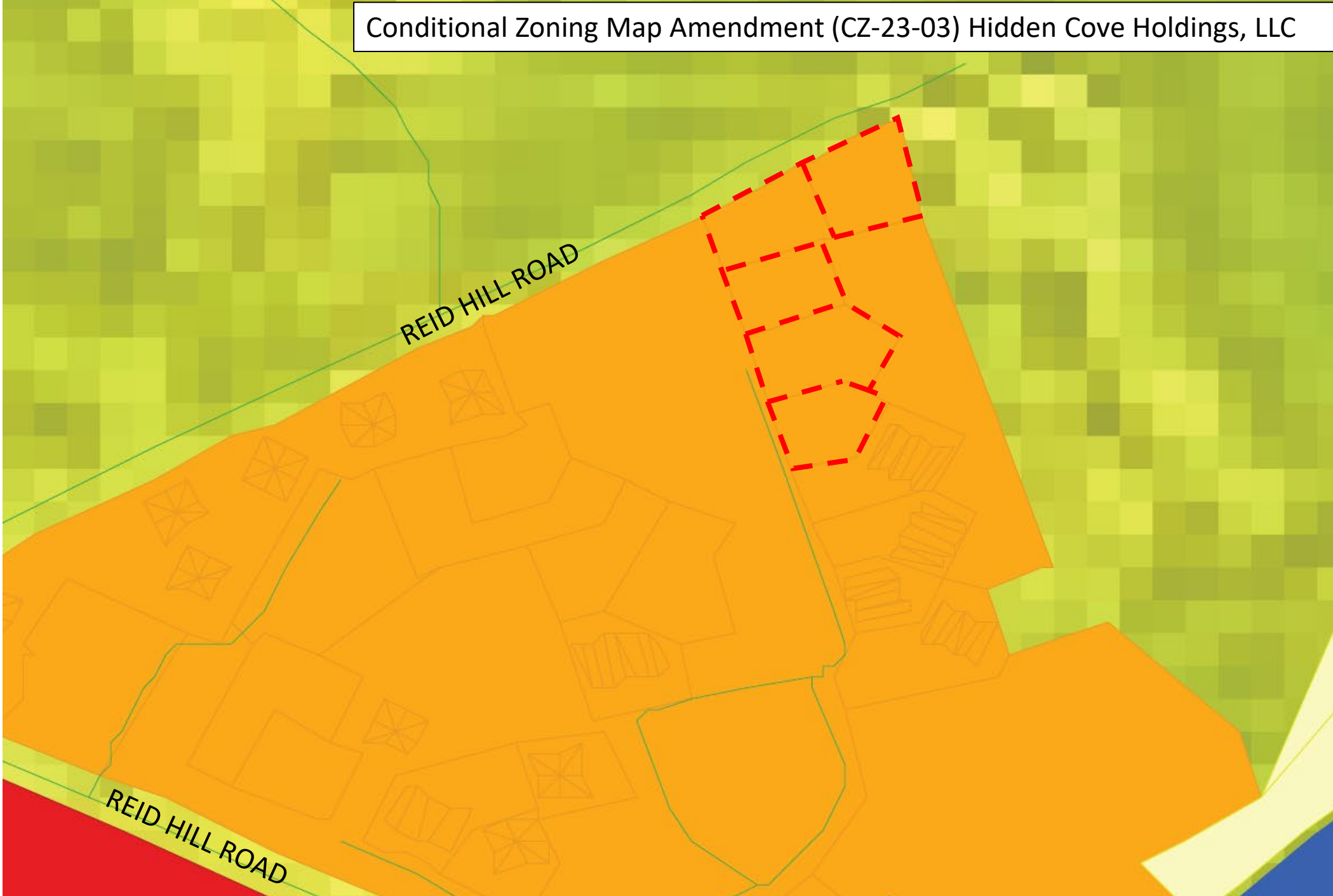
SCP

Conditional Zoning Map Amendment (CZ-23-03) Hidden Cove Holdings, LLC



	C-1
	C-2
	D
	M-1
	M-2
	MH-1
	PD
	PD-C
	PD-R
	R-1
	R-2
	R-3
	TD

Conditional Zoning Map Amendment (CZ-23-03) Hidden Cove Holdings, LLC



Proposed Future Land Use (FLU) Areas

- HD Residential Nodes
- Recreation Node
- Commercial Nodes
- Mixed Use Node
- Low Density Residential
- Medium Density Residential
- High Density Residential
- Corner Renaissance
- Commercial
- Employment
- Public/Institutional
- Recreation/Open Space
- Proposed Employment
- Proposed High Density Residential
- Proposed Recreation/Open Space

Berkeley County Future Land Use

- Conservation/Recreation
- Constrained Residential Growth
- Employment
- Low Density Suburban
- Moderate Density Suburban