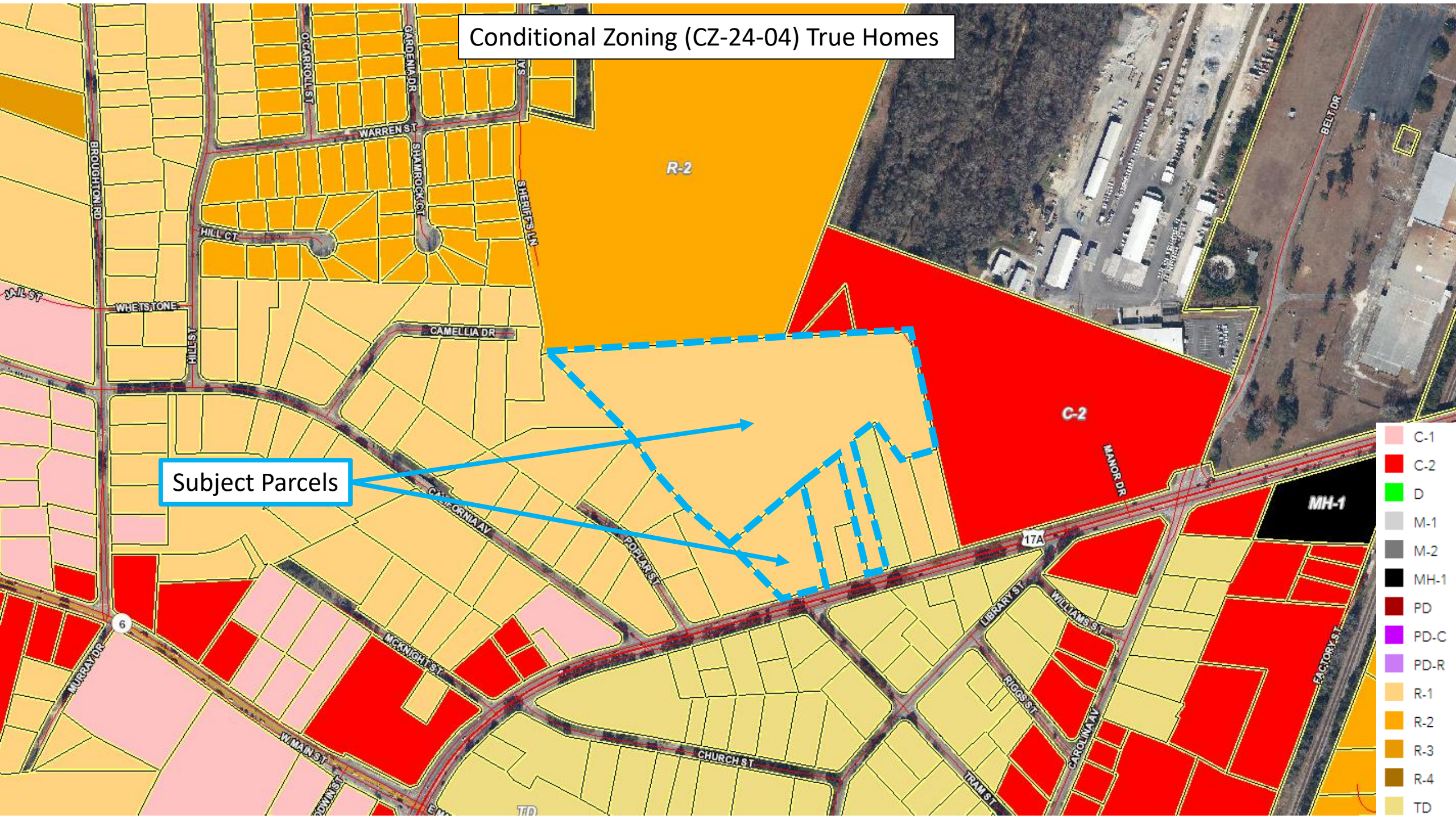


Conditional Zoning (CZ-24-04) True Homes

Subject Parcels



Conditional Zoning (CZ-24-04) True Homes



Subject Parcels

- C-1
- C-2
- D
- M-1
- M-2
- MH-1
- PD
- PD-C
- PD-R
- R-1
- R-2
- R-3
- R-4
- TD

Conditional Zoning (CZ-24-04) True Homes

Subject Parcels

LEGEND

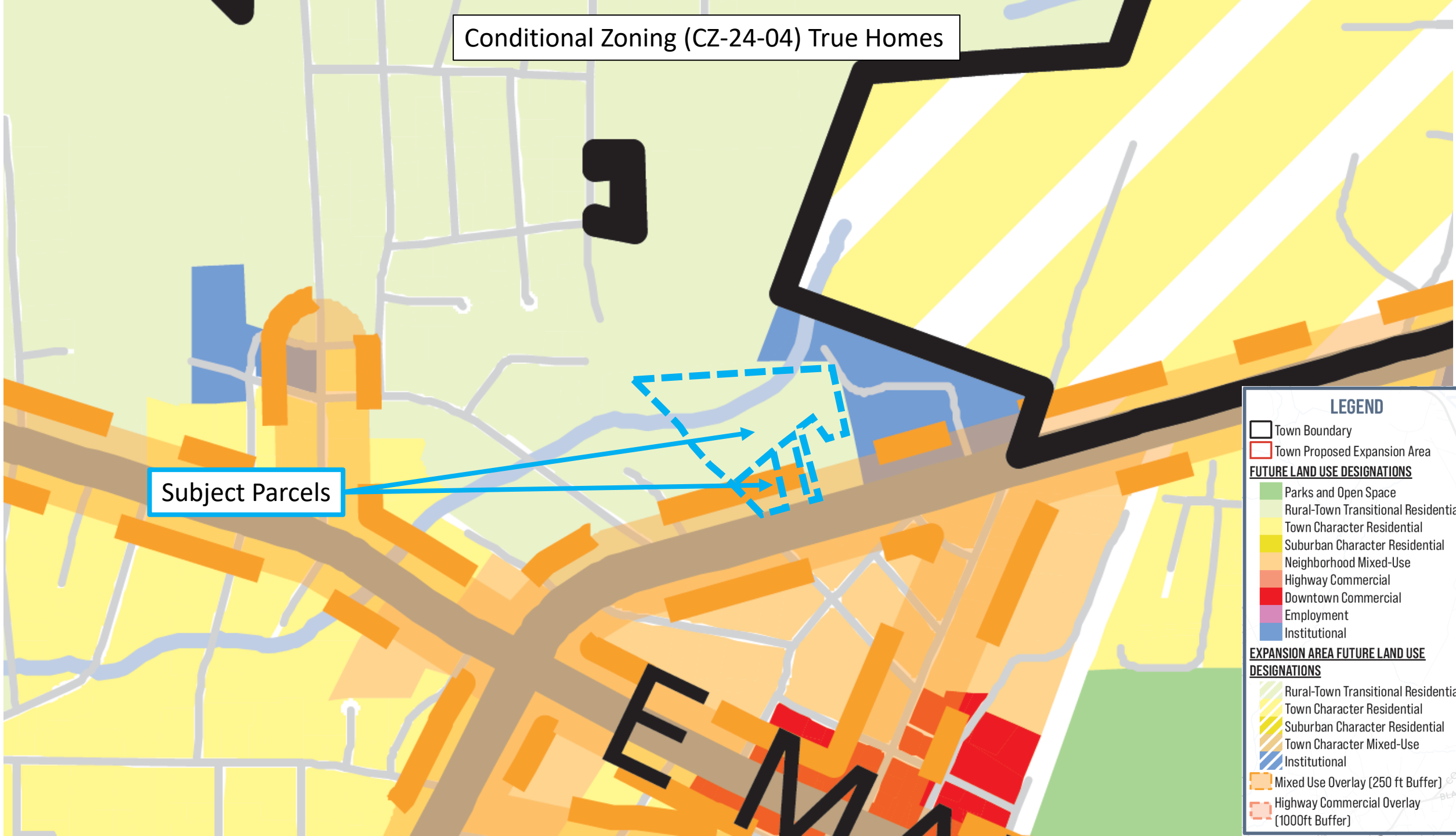
- Town Boundary
- Town Proposed Expansion Area

FUTURE LAND USE DESIGNATIONS

- Parks and Open Space
- Rural-Town Transitional Residential
- Town Character Residential
- Suburban Character Residential
- Neighborhood Mixed-Use
- Highway Commercial
- Downtown Commercial
- Employment
- Institutional

EXPANSION AREA FUTURE LAND USE DESIGNATIONS

- Rural-Town Transitional Residential
- Town Character Residential
- Suburban Character Residential
- Town Character Mixed-Use
- Institutional
- Mixed Use Overlay (250 ft Buffer)
- Highway Commercial Overlay (1000ft Buffer)



Conditional Zoning (CZ-24-04) True Homes

Subject Parcels

6015G0385E

- FEMA Flood Data (eff. 12/7/18)
- FIRM Panels
- Base Flood Elevation
- Limit of Moderate Wave Action
- Floodways
- Flood Zones
 - VE
 - AE
 - A
 - 0.2 PCT ANNUAL CHANCE FLOOD HAZARD
 - AREA NOT INCLUDED
 - NO DATA
- Formerly Dorchester Areas (eff. 7/18/17)
- National Wetlands Inventory

