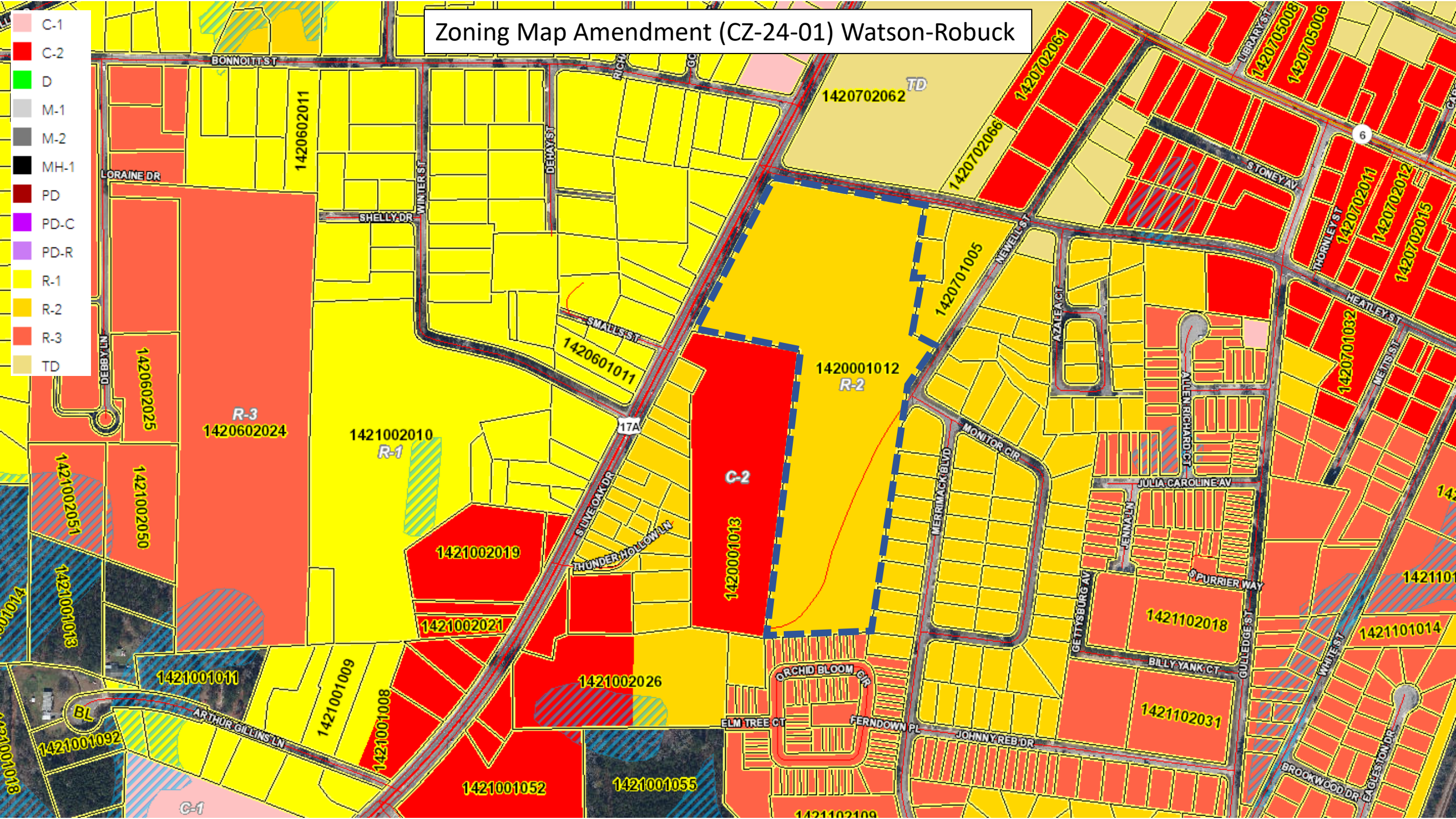


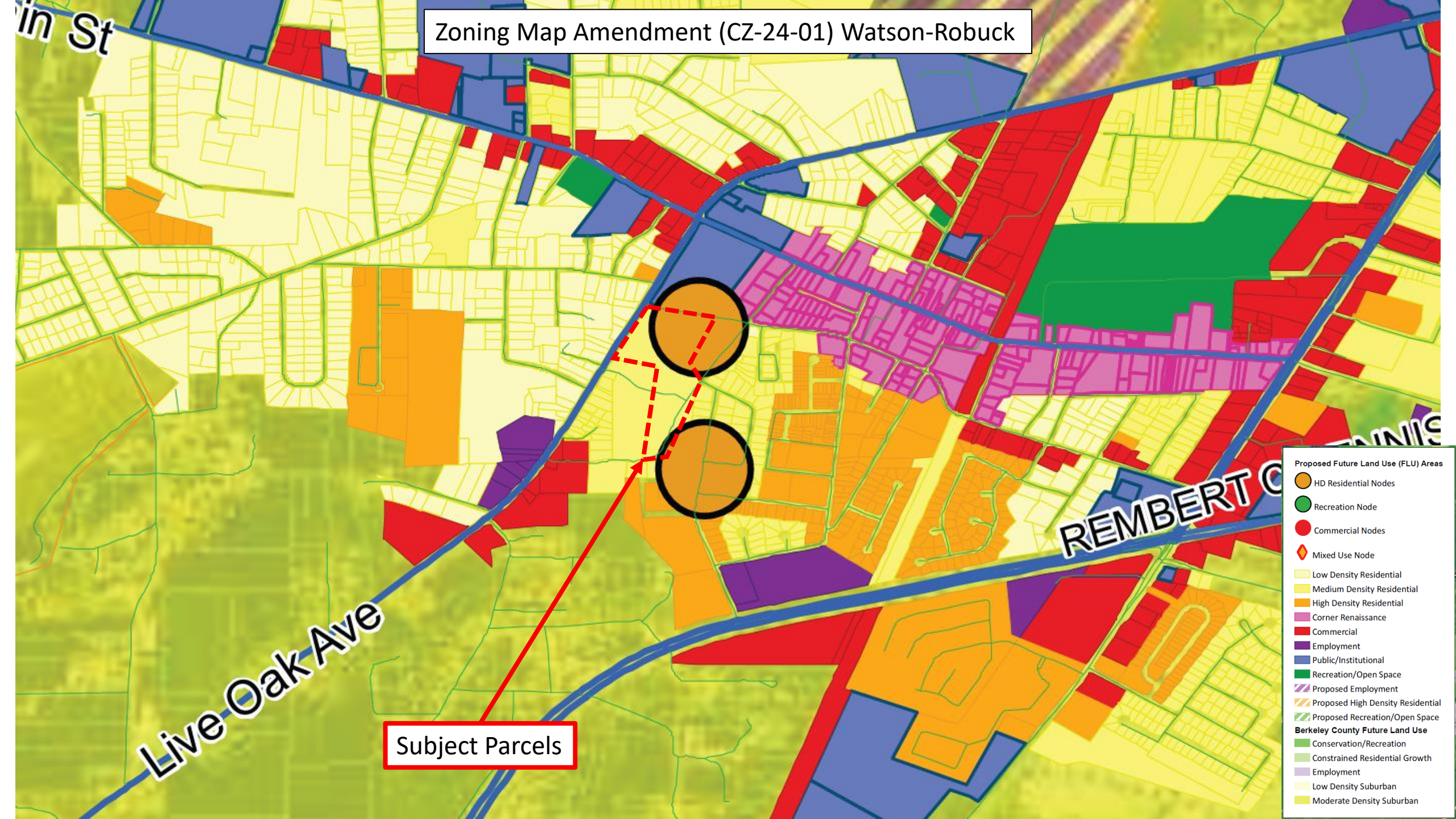
Zoning Map Amendment (CZ-24-01) Watson-Robuck



Zoning Map Amendment (CZ-24-01) Watson-Robuck



Zoning Map Amendment (CZ-24-01) Watson-Robuck



Subject Parcels

- Proposed Future Land Use (FLU) Areas
 - HD Residential Nodes
 - Recreation Node
 - Commercial Nodes
 - Mixed Use Node
- Berkeley County Future Land Use
 - Low Density Residential
 - Medium Density Residential
 - High Density Residential
 - Corner Renaissance
 - Commercial
 - Employment
 - Public/Institutional
 - Recreation/Open Space
 - Proposed Employment
 - Proposed High Density Residential
 - Proposed Recreation/Open Space
 - Conservation/Recreation
 - Constrained Residential Growth
 - Employment
 - Low Density Suburban
 - Moderate Density Suburban