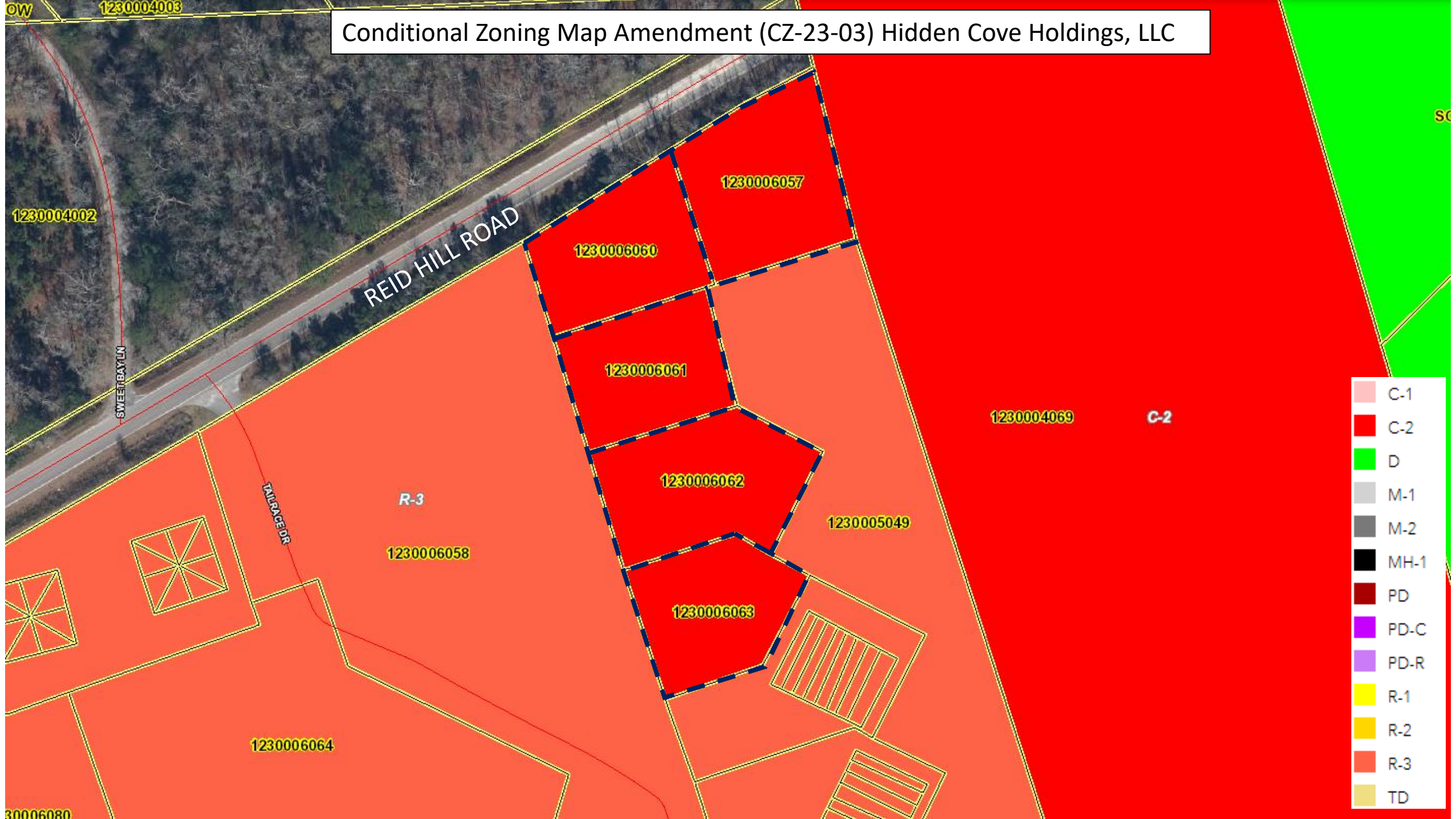


Conditional Zoning Map Amendment (CZ-23-03) Hidden Cove Holdings, LLC

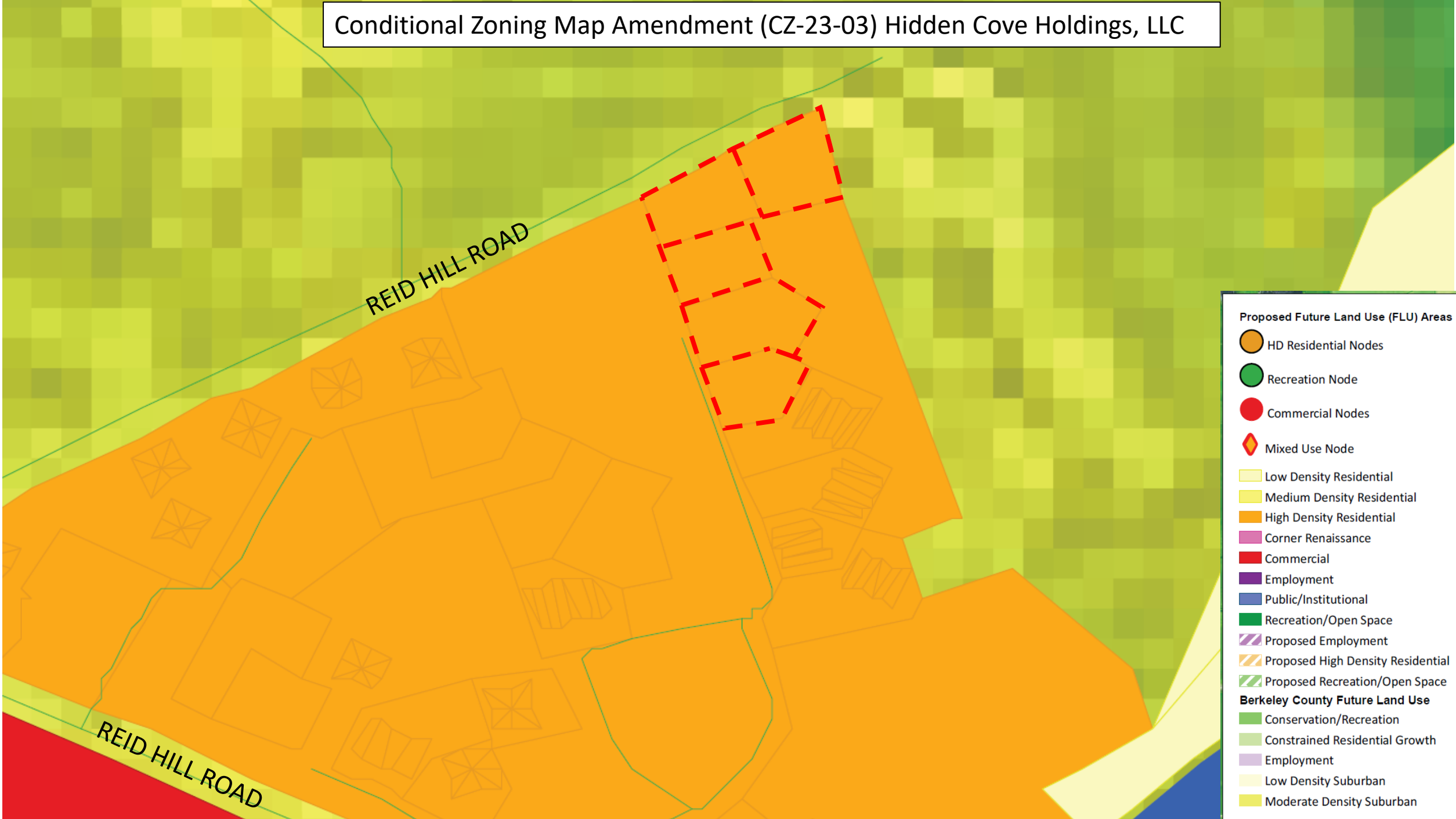


# Conditional Zoning Map Amendment (CZ-23-03) Hidden Cove Holdings, LLC



	C-1
	C-2
	D
	M-1
	M-2
	MH-1
	PD
	PD-C
	PD-R
	R-1
	R-2
	R-3
	TD

# Conditional Zoning Map Amendment (CZ-23-03) Hidden Cove Holdings, LLC



- Proposed Future Land Use (FLU) Areas**
- HD Residential Nodes
  - Recreation Node
  - Commercial Nodes
  - Mixed Use Node
  - Low Density Residential
  - Medium Density Residential
  - High Density Residential
  - Corner Renaissance
  - Commercial
  - Employment
  - Public/Institutional
  - Recreation/Open Space
  - Proposed Employment
  - Proposed High Density Residential
  - Proposed Recreation/Open Space
- Berkeley County Future Land Use**
- Conservation/Recreation
  - Constrained Residential Growth
  - Employment
  - Low Density Suburban
  - Moderate Density Suburban