



**Moberly Area Chamber of Commerce**  
211 West Reed Street | Moberly, MO 65270  
phone 660.263.6070 | fax 660.263.9443  
[www.MoberlyChamber.com](http://www.MoberlyChamber.com)

Dear Mr. Thompson & Moberly City Council:

On behalf of the Moberly Area Chamber of Commerce, we are seeking permission:

- Request closure of the following locations on Saturday, December 7, 2024 from 6am-4pm for Mid-Missouri's Christmas Festival
  - North Sturgeon St from Coates St and Rollins St
  - Parking lot behind City Hall
  - Depot Park parking lot
  - Alley in between City Hall & the Moberly Parks and Recreation
- Hold a Christmas Parade on Saturday, December 7, 2024 at 3pm starting at on Reed Street at Depot Park and heading West, disbanding at Johnson St.
- To lift public consumption of alcohol for Mid-Missouri's Christmas Festival starting on Saturday, December 7, 2024, in Downtown Moberly from 10:00 am-10:00 pm
- Requesting the usage of the Fennel Complex indoor and outdoor space at 315 North Clark Street on Friday, December 6, 2024, at 5:00pm through Saturday, December 7, 2024, at 10:00pm
- Requesting usage of the parking spaces on the 100-500 blocks of W Reed Street, the parking spaces of North Clark Street, N Williams Street, N 4<sup>th</sup> Street and N 4<sup>th</sup> Street starting on Friday, December 6, 2024 at 5:00pm through Saturday, December 7, 2024, until 10:00pm to allow for mobile food trucks, trailers & vendor parking
- Request to use the parking lot at Moberly Parks & Recreation on Friday, December 6, 2024 at 5:00pm through Saturday, December 7, 2024 at 10:00pm
- Hang the season's greetings sign on the pedestrian bridge for the holiday season

This event had around 12,000 people in attendance in 2024 and included pop-up vendors, a parade, horse drawn carriage rides, pictures with Santa, live reindeer and Mayor's Tree Lighting.

Lifting public consumption will allow our downtown restaurants and licensed alcohol vendors to sell alcoholic drinks to event attendees to carry with them during the event. Each person will have a designated wristband to showcase that they are 21 years and older.

Due to the large amount of floats that were had last year (53) for safety reasons we feel the need to close Sturgeon Street for a portion of the day.

If the City of Moberly (or a specific department) would prefer adjustments to this request or would like to meet directly with the planning committee, please contact Megan Schmitt by email [director@moberlychamber.com](mailto:director@moberlychamber.com) or phone 660.263.6070.

Thank you for your time and consideration.

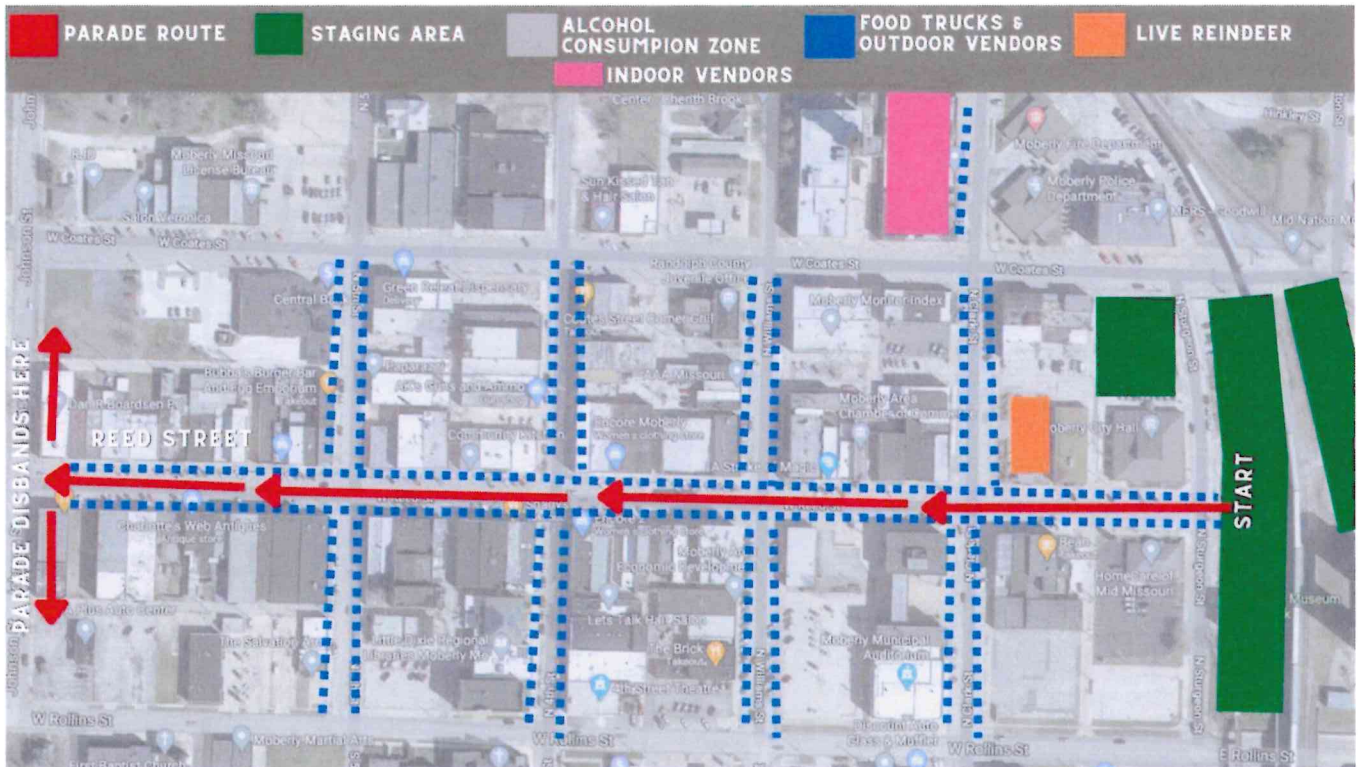
Sincerely,

A handwritten signature in blue ink that reads "Megan Schmitt". The signature is fluid and cursive, with the first name "Megan" being larger and more prominent than the last name "Schmitt".

Megan Schmitt  
Executive Director – Moberly Area Chamber of Commerce



**Moberly Area Chamber of Commerce**  
 211 West Reed Street | Moberly, MO 65270  
 phone 660.263.6070 | fax 660.263.9443  
[www.MoberlyChamber.com](http://www.MoberlyChamber.com)



Orange area where we are requesting closure

