

CUSTOMER NAME: B&G Club - Columbia
PROJECT NAME: Shade
LOCATION: Columbia TN
CONFIGURATION #: Q-093074

Seth Bunce
Noah's Park and Playgrounds
,
seth@noahsplay.com



CORPORATE HEADQUARTERS
2580 Esters Blvd, Ste 100
DFW Airport, TX 75261
800-966-5005

- NOT TO SCALE
- NOT FOR CONSTRUCTION OR PERMITS
- DUE TO REPRODUCTION, ACTUAL COLORS MAY
DIFFER FROM REPRESENTATION

These plans and specifications are the property of USA Shade and Fabric Structures and shall not be reproduced without their written permission.

CUSTOMER NAME:
PROJECT NAME:
LOCATION:
CONFIGURATION #:

B&G Club - Columbia
Shade
Columbia TN
Q-093074

REINFORCED CONCRETE NOTES

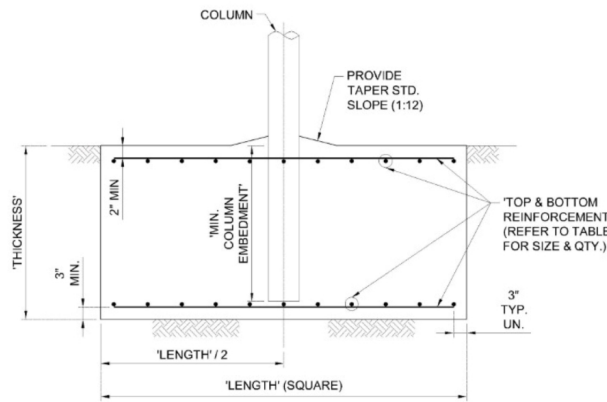
- CONCRETE WORK SHALL BE EXECUTED IN ACCORDANCE WITH THE LATEST EDITION OF THE AMERICAN CONCRETE INSTITUTE SPECIFICATION FOR STRUCTURAL CONCRETE ACI 301 AND BUILDING CODE ACI 318. CONCRETE SPECIFICATIONS SHALL BE AS FOLLOWS:
 - 28 DAY STRENGTH: 2500 PSI
 - SLUMP: 3-5
 - PORTLAND CEMENT SHALL CONFORM TO C-150
 - AGGREGATE SHALL CONFORM TO ASTM C-33
- ALL REINFORCEMENT STEEL SHALL CONFORM TO ASTM A-615 GRADE 60; AND SHALL BE DETAILED, FABRICATED AND PLACED IN ACCORDANCE WITH THE LATEST ACI SPECIFICATION FOR STRUCTURAL CONCRETE ACI 301, ACI DETAILING MANUAL AND CRSI MANUAL OF STANDARD PRACTICE.
- ALL ANCHOR BOLTS SET IN NEW CONCRETE (WHEN APPLICABLE) SHALL COMPLY WITH ASTM F-1554 GRADE 55 (GALVANIZED).
- ALL NON-SHRINK GROUT SHALL HAVE A MINIMUM 28 DAYS COMPRESSIVE STRENGTH OF 5000 PSI, AND SHALL COMPLY THE REQUIREMENTS OF ASTM C109, ASTM C939, ASTM C1090 ASTM C1107, WHEN APPLICABLE.
- SOIL PARAMETERS FOR FOOTING ANALYSIS; TABLE 1806.2, CLASS : 5 - 1500(PSF)
- FOR SPREAD FOOTING, EDGE OF COLUMN OR ANCHOR BOLTS MUST BE SET AT LEAST 12" FROM THE EDGE OF SPREAD FOOTING EDGE.
- SPREAD FOOTING ALLOWED TO BE ROTATED AS REQUIRED.

**NOT FOR
CONSTRUCTION
OR PERMITS**

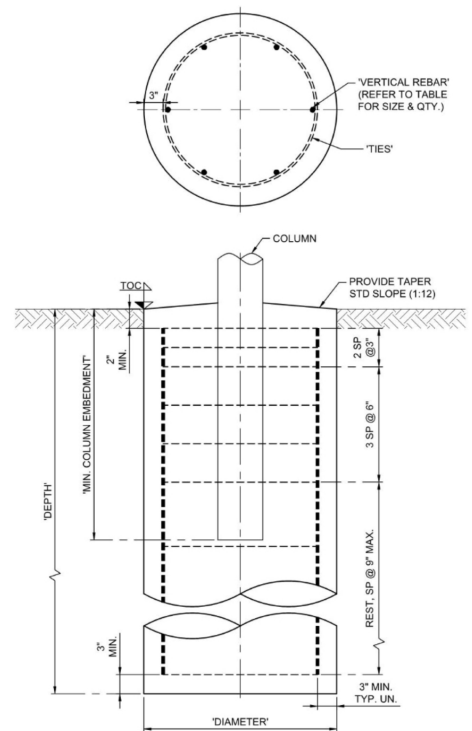
**NOTE: ADDITIONAL
INSTALLATION COSTS
FOR SPREAD FOOTING**

TABLE FOR NON-CONSTRAINED DRILLED PIER FOOTING								
DIAMETER (FT)	DEPTH (FT)	VERTICAL REBAR		TIES			MIN. COLUMN EMBEDMENT (EMBED) (IN)	MIN. ANCHOR EMBEDMENT (RECESS. & SURFACE) (IN)
		QTY.	SIZE	QTY.	Ø LOOP (FT)	SIZE		
2.00	6.00	6	#6	11	1.5	#3	33	19

TABLE FOR NON-CONSTRAINED SPREAD FOOTING						
LENGTH (FT)	THICKNESS (FT)	TOP AND BOTTOM REINFORCEMENT			MIN. COLUMN EMBEDMENT (EMBED) (IN)	MIN. ANCHOR EMBEDMENT (RECESS. & SURFACE) (IN)
		QTY.	SIZE	SPACING (IN)		
4.50	3.00	6	#5 @	9.5 O.C.E.W.	33	19



SPREAD FOOTING TYPE
EMBEDDED
SCHEMATIC VIEW ONLY
REFER TO TABLE FOR VARIABLE DIMENSIONS



DRILLED PIER FOOTING TYPE
EMBEDDED
SCHEMATIC VIEW ONLY
REFER TO TABLE FOR VARIABLE DIMENSIONS & QTY.



CORPORATE HEADQUARTERS
2580 Esters Blvd, Ste 100
DFW Airport, TX 75261
800-966-5005

- NOT TO SCALE
- NOT FOR CONSTRUCTION OR PERMITS
- DUE TO REPRODUCTION, ACTUAL COLORS MAY DIFFER FROM REPRESENTATION

These plans and specifications are the property of USA Shade and Fabric Structures and shall not be reproduced without their written permission.