
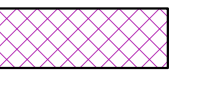


LEGEND

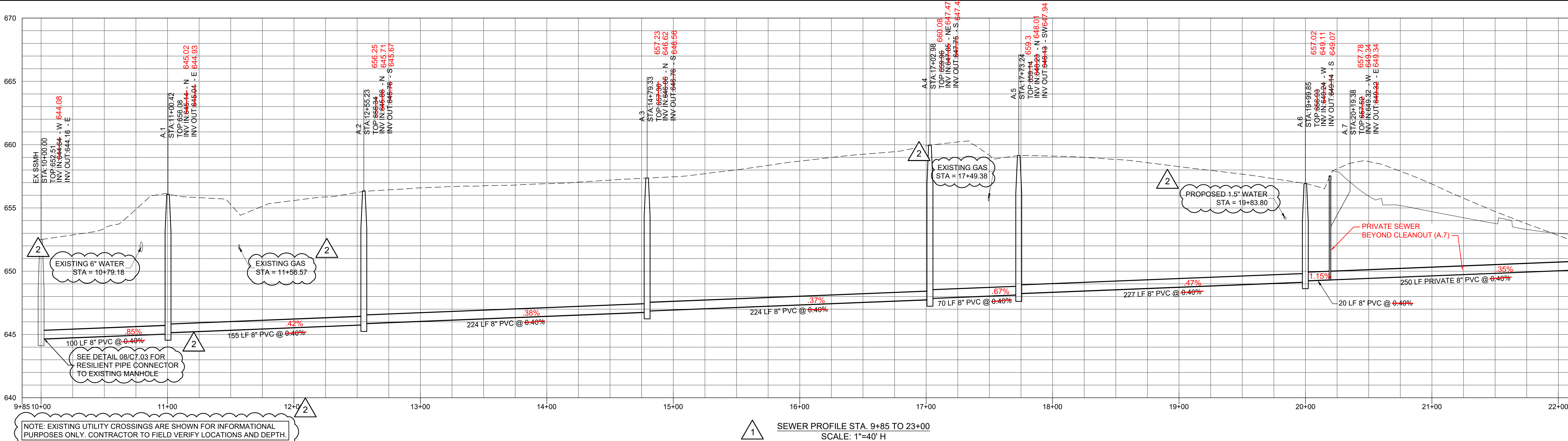
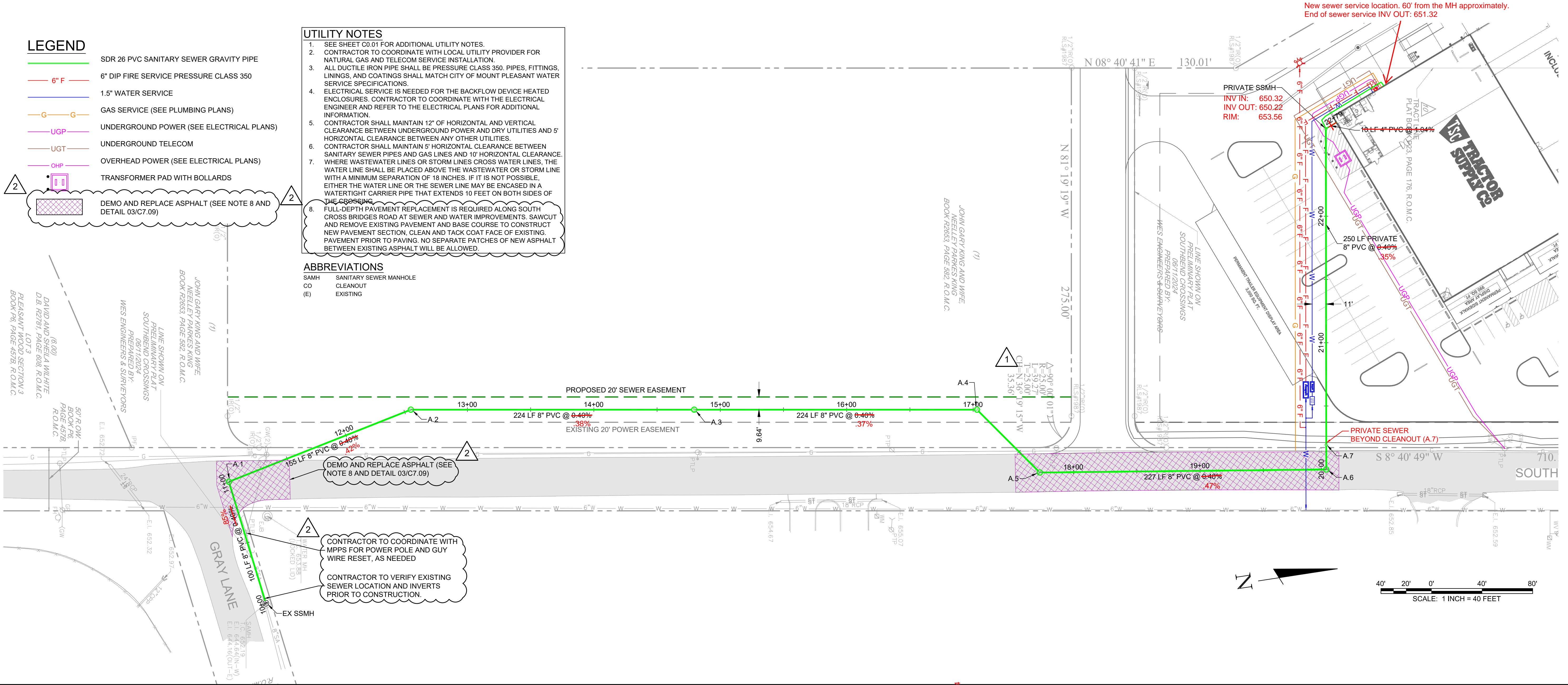
- SDR 26 PVC SANITARY SEWER GRAVITY PIPE
- 6" DIP FIRE SERVICE PRESSURE CLASS 350
- 1.5" WATER SERVICE
- GAS SERVICE (SEE PLUMBING PLANS)
- UGP UNDERGROUND POWER (SEE ELECTRICAL PLANS)
- UGT UNDERGROUND TELECOM
- OHP OVERHEAD POWER (SEE ELECTRICAL PLANS)
-  TRANSFORMER PAD WITH BOLLARDS
-  DEMO AND REPLACE ASPHALT (SEE NOTE 8 AND DETAIL 03/C7.09)

UTILITY NOTES

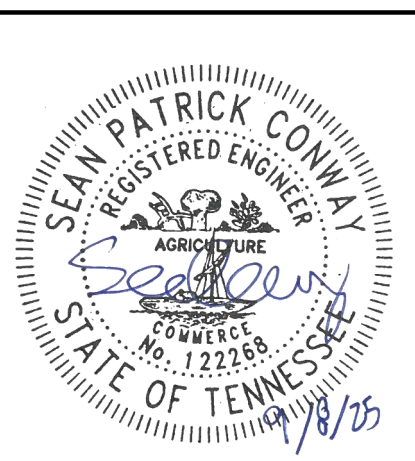
1. SEE SHEET C0.01 FOR ADDITIONAL UTILITY NOTES.
2. CONTRACTOR TO COORDINATE WITH LOCAL UTILITY PROVIDER FOR NATURAL GAS AND TELECOM SERVICE INSTALLATION.
3. ALL DUCTILE IRON PIPE SHALL BE PRESSURE CLASS 350. PIPES, FITTINGS, LININGS, AND COATINGS SHALL MATCH CITY OF MOUNT PLEASANT WATER SERVICE SPECIFICATIONS.
4. ELECTRICAL SERVICE IS NEEDED FOR THE BACKFLOW DEVICE HEATED ENCLOSURES. CONTRACTOR TO COORDINATE WITH THE ELECTRICAL ENGINEER AND REFER TO THE ELECTRICAL PLANS FOR ADDITIONAL INFORMATION.
5. CONTRACTOR SHALL MAINTAIN 12" OF HORIZONTAL AND VERTICAL CLEARANCE BETWEEN UNDERGROUND POWER AND DRY UTILITIES AND 5' HORIZONTAL CLEARANCE BETWEEN ANY OTHER UTILITIES.
6. CONTRACTOR SHALL MAINTAIN 5' HORIZONTAL CLEARANCE BETWEEN SANITARY SEWER PIPES AND GAS LINES AND 10' HORIZONTAL CLEARANCE WHERE WASTEWATER LINES OR STORM LINES CROSS WATER LINES. THE WATER LINE SHALL BE PLACED ABOVE THE WASTEWATER OR STORM LINE WITH A MINIMUM SEPARATION OF 18 INCHES. IF IT IS NOT POSSIBLE, EITHER THE WATER LINE OR THE SEWER LINE MAY BE ENCASED IN A WATERTIGHT CARRIER PIPE THAT EXTENDS 10 FEET ON BOTH SIDES OF THE CROSSINGS.
7. FULL-DEPTH PAVEMENT REPLACEMENT IS REQUIRED ALONG SOUTH CROSS BRIDGES ROAD AT SEWER AND WATER IMPROVEMENTS. SAWCUT AND REMOVE EXISTING PAVEMENT AND BASE COURSE TO CONSTRUCT NEW PAVEMENT SECTION. CLEAN AND TACK COAT FACE OF EXISTING PAVEMENT PRIOR TO PAVING. NO SEPARATE PATCHES OF NEW ASPHALT BETWEEN EXISTING ASPHALT WILL BE ALLOWED.

ABBREVIATIONS

- SAMH SANITARY SEWER MANHOLE
- CO CLEANOUT
- (E) EXISTING



NOTE: EXISTING UTILITY CROSSINGS ARE SHOWN FOR INFORMATIONAL PURPOSES ONLY. CONTRACTOR TO FIELD VERIFY LOCATIONS AND DEPTH.



SEWER PLAN AND PROFILE
TRACTOR SUPPLY COMPANY - MT PLEASANT
 GBT REALTY
 CITY OF MT PLEASANT, MAURY COUNTY, TENNESSEE

REV.	DR.	CHK.	DATE	DESCRIPTION
0			05/16/2025	ISSUED FOR GRADING PERMIT
1	BH	SC	05/16/2025	REVISIONS
2	BH	SC	05/16/2025	COMMENT REVISIONS

C3.01
FILE NO. 3868007

USER: BHEIGL
 FILE: \\pwr-bvnc-mtdatal\Projects\3868007\04_CAD\CIVIL\LOT13868007_C3.01 - Sewer Profile.dwg
 SAVED: 05/16/2025
 PLOTTED: 05/16/2025