

SITE LAYOUT PLAN

GBT REALTY
TRACTOR SUPPLY COMPANY - MT PLEASANT
CITY OF MT PLEASANT, MAURY COUNTY, TENNESSEE

REV.	OR.	CHK.	DATE	DESCRIPTION
0		SC	05/16/2025	ISSUED FOR GRADING PERMIT
1	BH	SC	05/16/2025	REVISIONS
2	BH	SC	10/30/2025	COMMENT REVISIONS

C1.00
FILE NO. 3868007

LEGEND

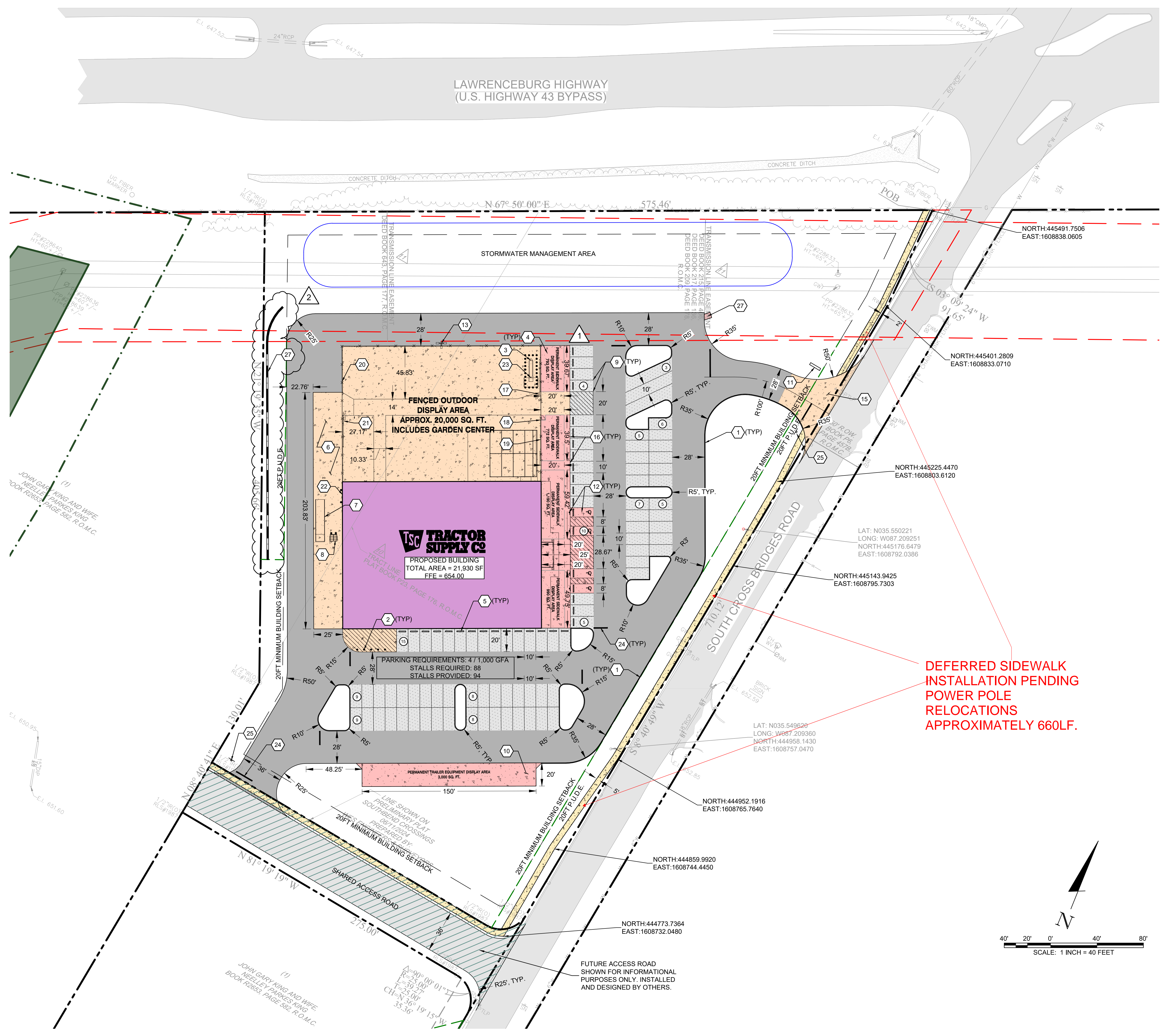
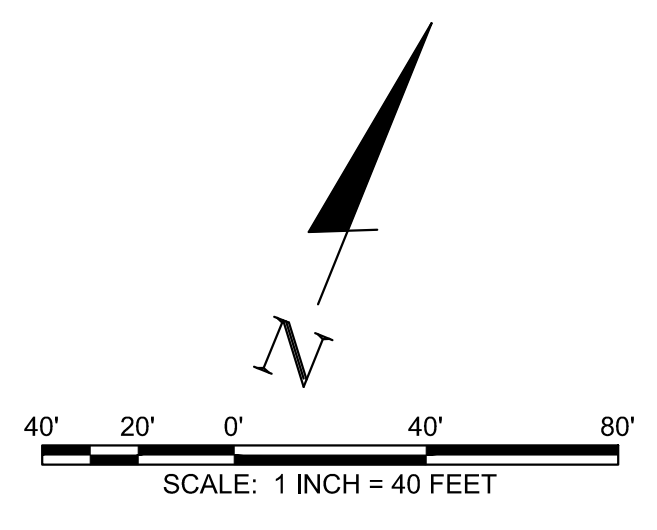
- 651 --- EXISTING MINOR CONTOUR
- 650 --- EXISTING MAJOR CONTOUR
- - - - - PROPERTY LINE
- - - - - MINIMUM BUILDING SETBACK
- - - - - TRANSMISSION LINE EASEMENT
- - - - - PROPOSED P.U.D.E.
- [Pattern] CONCRETE SIDEWALK
- [Pattern] LIGHT-DUTY CONCRETE PAVEMENT
- [Pattern] HEAVY-DUTY CONCRETE PAVEMENT
- [Pattern] LIGHT-DUTY ASPHALT PAVEMENT
- [Pattern] HEAVY-DUTY ASPHALT PAVEMENT

SITE KEYNOTES

1	POST CURB
2	6" PIPE BOLLARDS
3	BULK PROPANE TANK LOCATION (SEE ARCH PLANS)
4	SIDEWALK DISPLAY AREA
5	CONCRETE WHEEL STOP
6	LOADING AREA (SEE ARCH PLANS)
7	RECEIVING RAMP (SEE ARCH PLANS)
8	TRASH ENCLOSURE (SEE ARCH PLANS)
9	PAVEMENT STRIPING (4" TDOT TRAFFIC PAINT)
10	PERMANENT TRAILER & EQUIPMENT DISPLAY AREA
11	TSC PYLON SIGN (SEE ARCH PLANS)
12	ACCESSIBLE PARKING AND SIGNAGE
13	PROPOSED LIGHT POLE (SEE ELEC PLANS)
14	4" PAINTED YELLOW STRIPING INDICATING EXTENT OF SIDEWALK DISPLAY AREA
15	COMMERCIAL DRIVEWAY RAMP
16	FLUSH CURB
17	20' MANUAL ROLLING CANTILEVERED GATE (SEE ARCH PLANS)
18	4' EGRESS MAN GATE (SEE ARCH PLANS)
19	8' HIGH CHAIN LINK FENCE WITH PRIVACY WINDSCREEN AT FRONT OF LIVE GOODS CENTER ONLY (SEE ARCH PLANS)
20	18' HIGH CHAIN LINK FENCE WITH PRIVACY WINDSCREEN (SEE ARCH PLANS)
21	20' AUTOMATIC ROLLING CANTILEVERED GATE (SEE ARCH PLANS)
22	OVERHEAD DOOR LOCATION LEVEL (SEE ARCH PLANS)
23	METAL CANOPY AT PROPANE TANK (SEE ARCH PLANS)
24	STOP BAR (24" X 12" WHITE TDOT TRAFFIC PAINT)
25	STOP SIGN (TDOT STANDARD DRAWING T-S-20)
26	CONCRETE FLUME
27	PROPOSED RETAINING WALL (CONTRACTOR TO PROVIDE PLANS)

GENERAL NOTES

- CONTRACTOR TO REPLACE ANY PAVEMENT MARKING REMOVED DURING INSTALLATION OF SIDEWALK, CURB AND GUTTER, AND PAVEMENT.
- ALL DIMENSIONS ARE TO FACE OF CURB, WALL, OR BUILDING UNLESS OTHERWISE NOTED.
- IT IS RECOMMENDED THAT THE CONTRACTOR REVIEW AND FOLLOW THE AMERICAN CONCRETE PAVING ASSOCIATION 10-STEP JOINTING METHOD (IS306P) FOR DETERMINING JOINT LAYOUT. CONTRACTOR TO SUBMIT A JOINTING PLAN FOR REVIEW.



USER:BDHEIGL
FILE:\p\p\bwac\midia\PRJ\02719\3868007\04_CAD\CIVIL\013868007_01.00 - Site Layout Plan.dwg
SAVED:10/30/2025
PLOTTED:10/30/2025