

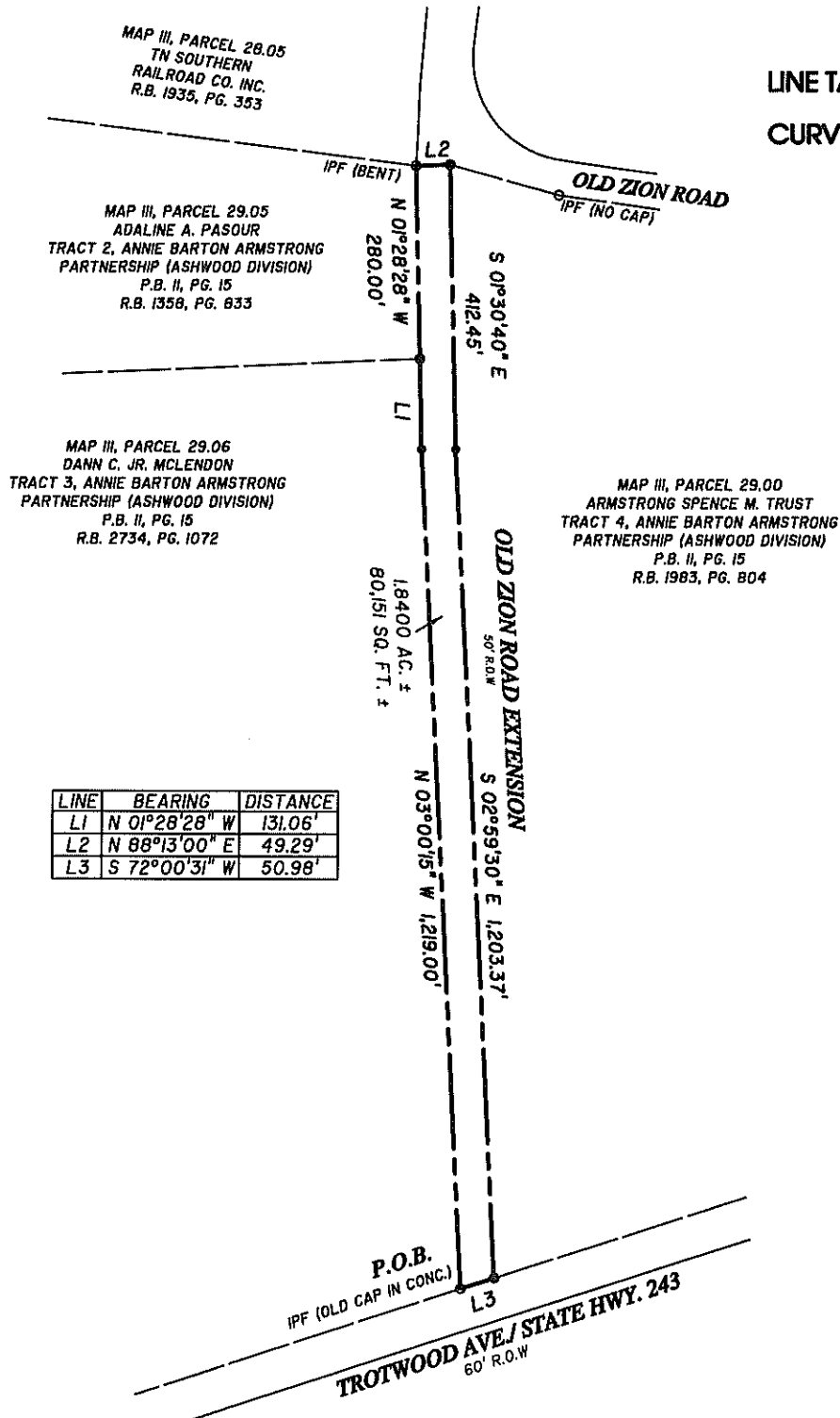
**SEC, Inc.**

WWW.SEC-CIVIL.COM

**SITE ENGINEERING CONSULTANTS****ENGINEERING • SURVEYING • LAND PLANNING  
LANDSCAPE ARCHITECTURE**850 MIDDLE TENNESSEE BLVD • MURFREESBORO, TENNESSEE 37129  
PHONE (615) 890-7901 • FAX (615) 895-2567

LINE TABLE

CURVE TABLE



LINE	BEARING	DISTANCE
L1	N 01°28'28" W	131.06'
L2	N 88°13'00" E	49.29'
L3	S 72°00'31" W	50.98'

RIGHT OF WAY EXHIBIT FOR:  
OLD ZION ROAD EXTENSION  
(R.O.R.C., TN)

REV DATE:

DATE: 9-24-2025 SCALE 1"=200'

22828



SITE ENGINEERING CONSULTANTS

Engineering • Surveying • Land Planning  
850 Middle Tennessee Blvd, Murfreesboro, TN 37129  
www.sec-civil.com • 615-890-7901 • fax 615-895-2567

BEING A PARCEL OF LAND SITUATED IN THE 8TH CIVIL DISTRICT OF MAURY COUNTY, TENNESSEE, AND BEING GENERALLY BOUNDED BY THE FOLLOWING:

ON THE NORTH BY OLD ZION ROAD, ON THE EAST BY THE PROPERTY OF ARMSTRONG SPENCE M. TRUST TRACT 4, ANNIE BARTON ARMSTRONG PARTNERSHIP (ASHWOOD DIVISION) AS RECORDED IN P.B. 11, PG. 15 R.B. 1983, PG. 804, ON THE SOUTH BY TROTWOOD AVENUE/ STATE HIGHWAY 243, ON THE WEST BY DANN C. JR. MCLENDON TRACT 3, ANNIE BARTON ARMSTRONG PARTNERSHIP (ASHWOOD DIVISION) AS RECORDED IN P.B. 11, PG. 15 R.B. 2734, PG. 1072, AND ADALINE A. PASOUR TRACT 2, ANNIE BARTON ARMSTRONG PARTNERSHIP (ASHWOOD DIVISION) AS RECORDED IN P.B. 11, PG. 15 R.B. 1358, PG. 833, AND BEING MORE PARTICULARLY DESCRIBED AS FOLLOWS:

BEGINNING AT A 1/2" IRON PIN FOUND WITH AN OLD CAP IN CONCRETE LYING ON THE NORTHERN RIGHT OF WAY OF TROTWOOD AVENUE/ STATE HIGHWAY 243;

THENCE, WITH THE EAST LINE OF DANN C. JR. MCLENDON FOR THE FOLLOWING CALLS:

N 03°00'15" W, 1219.00' TO A POINT;

THENCE, N 01°28'28" W, 131.06' TO A POINT;

THENCE, N 01°28'28" W, 280.00' TO A BENT 1/2" IRON PIN FOUND WITH NO CAP;

THENCE, WITH THE NORTH LINE OLD ZION ROAD N 88°13'00" E, 49.29';

THENCE, WITH THE WEST LINE OF ARMSTRONG SPENCE M. TRUST FOR THE FOLLOWING CALLS:

S 01°30'40" E, 412.45' TO A POINT;

THENCE, S 02°59'30" E, 1203.37' TO A POINT;

THENCE, WITH THE NORTH LINE OF TROTWOOD AVENUE/ STATE HIGHWAY 243 S 72°00'31" W, 50.98' TO THE POINT OF BEGINNING, HAVING AN AREA OF 80151.2 SQUARE FEET +/-, 1.840 ACRES +/-

ACCORDING TO A SURVEY BY DAVID A. PARKER TN RLS# 2381 OF SEC, INC. DATED 9-24-2025