



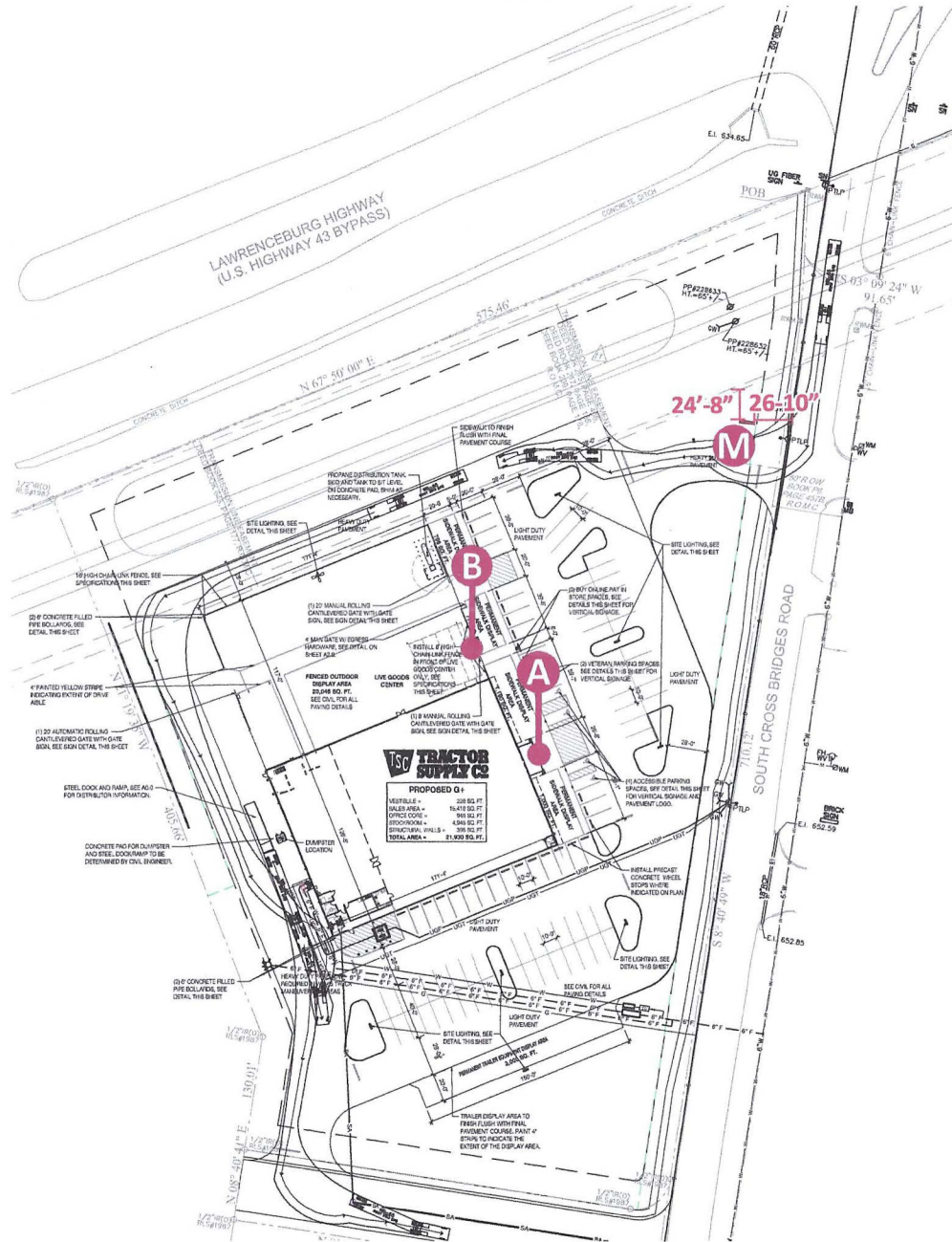
**TRACTOR<sup>®</sup>  
SUPPLY CO**

 March 6, 2026

 Mt. Pleasant, TN — **Variance Sign Exhibit**

 **ID. ASSOCIATES**  
BRINGING THE WORLD'S BRANDS TO LIFE  
a Philadelphia Sign Company

TRACTOR SUPPLY CO - MT PLEASANT, TN - SITE PLAN



- A** 8'-0" X 24'-0" Illuminated Wall Sign
- B** 6'-3 3/16" X 13'-6" Garden Center Sign
- M** 5'-0" X 15'-0" D/F Illuminated Monument @ 8' OAH

**CODE NOTES:**

**Wall Signs:** Allowed 1 SQFT per 1 LF of building frontage, plus additional setback bonus square footage of 1 SQFT for each 1 LF that the building is setback from the property line behind the 20' required building setback. No limit on number of signs allowed.

**Freestanding:** Allowed one monument style sign NTE 40 SQFT (sign face area) and 6' OAH. Must have a masonry base that is a minimum 1'6" in height with landscaping around the base of the sign. Overall sign structure NTE 88 SQFT.

**Setback:** Must be behind right-of-way and 12' from edge of pavement (road).

**Variance:** Apply, hearing scheduled within 60 days, 50/50 likelihood of approval.

**PROPOSED SIGNAGE:**

**Building:** Allowed 166.8 (166'-8" x 1) + 92 (112' bldg setback - 20' req'd setback) = 258.8 SQFT  
**Main ID:** 8'-0" X 24'-0" = 192 SQFT  
**Garden Center:** 6'-3 3/16" X 13'-6" = 85 SQFT (Variance Req'd)  
**Total SQFT Used = 277 SQFT**

**Freestanding:** Allowed monument with 40 SQFT (sign face area) & 88 SQFT (overall sign structure)

**Pylon:** 5'-0" x 15'-0" = 75 SQFT (Variance Required)  
**Total SQFT Used = 75 SQFT**

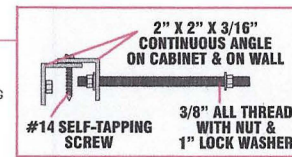
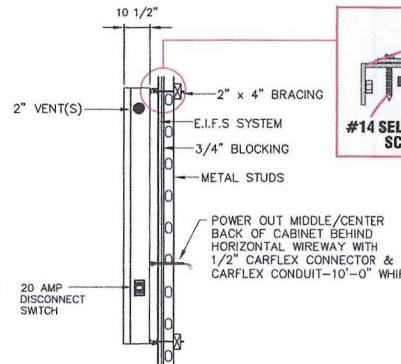
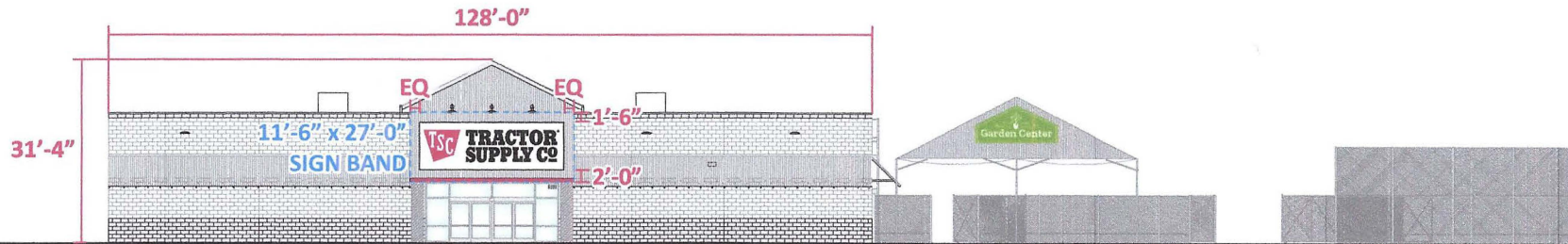
THIS DRAWING IS FOR CONCEPTUAL PURPOSES ONLY. DUE TO CONSTRUCTION CONSTRAINTS, SIZES AND/OR LAYOUTS MAY CHANGE SLIGHTLY.

<b>CLIENT:</b> TRACTOR SUPPLY CO	<b>STORE #:</b>	<b>REV:</b> R1 02/13/26 BRC	<b>REV:</b>	<b>REV:</b>
<b>LOCATION:</b> MT PLEASANT, TN	<b>DATE:</b> 10/14/25	<b>REV:</b> R2 03/06/26 BRC	<b>REV:</b>	<b>REV:</b>
<b>ACCOUNT REP:</b> CHAD FAUCHEUX	<b>DRAWN BY:</b> BRC	<b>REV:</b>	<b>REV:</b>	<b>REV:</b>
<b>DRAWING NO:</b> TSC - MT PLEASANT, TN - VARIANCE SIGN EXHIBIT				

EXHIBIT APPROVED BY:

FRONT ELEVATION - MAIN ID SIGN

SCALE: 1" = 30'-0"



Minimum required backing (between fascia and studs and/or girts) for wall sign is 3/4" pressure treated plywood, to be the full height and length of the sign area provided by landlord/ Gen. Contractor. We must have access behind the wall to penetrate through with 3/8" allthread in order to secure sign to studs or girts in wall structure w/ 2" x 4" bracing provided by sign installer and for final electrical connection.

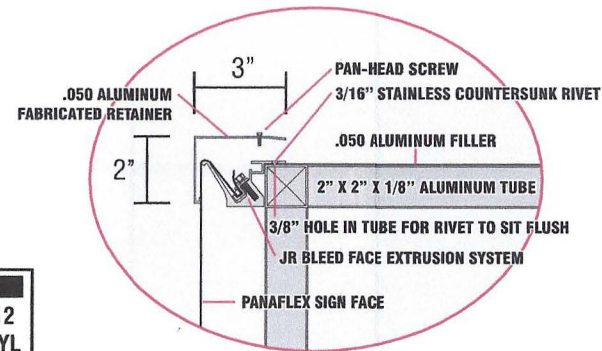
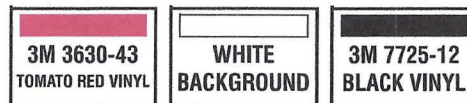
**DETAILS:**

- 10 1/2" DEEP CABINET W/ 2" RETAINERS (.050 ALUM)
- SINGLE FACE PANAGRAPHS III SUBSTRATE MATERIAL W/ VINYL OVERLAYS
- CABINET BODY FRAMED W/ 2" X 2" X 1/8" ALUM. TUBE
- BACK BRACING IS 1" X 2" X 1/8" ALUM. TUBE
- 3MM WHT/WHT ACM BACKS
- .050 SHELF AND DOOR FOR POWER SUPPLIES (RIGHT SIDE OF CABINET)

**COLORS:**

CABINET: GLOSS BLACK  
 BACKGROUND: WHITE  
 LOGO: 3M 3630-43 RED VINYL W/ WHITE COPY  
 TSC COPY: 3M 7725-12 BLACK

**COLORS:**



**SECTION 'A'**

Any Blocking Exposed To The Elements, Sign Installer is Required to Use Unistrut, Aluminum Angle or Pressure Treated Wood.

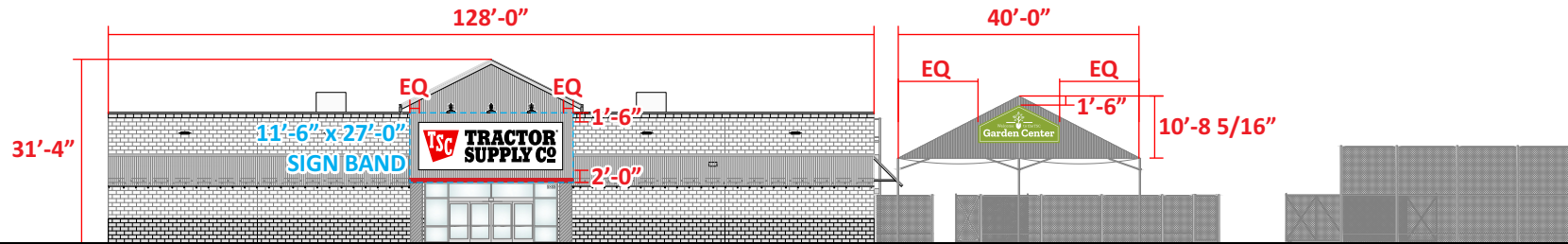
THIS DRAWING IS FOR CONCEPTUAL PURPOSES ONLY. DUE TO CONSTRUCTION CONSTRAINTS, SIZES AND/OR LAYOUTS MAY CHANGE SLIGHTLY.

CLIENT: TRACTOR SUPPLY CO	STORE #:	REV: R1 02/13/26 BRC	REV:	REV:
LOCATION: MT PLEASANT, TN	DATE: 10/14/25	REV: R2 03/06/26 BRC	REV:	REV:
ACCOUNT REP: CHAD FAUCHEUX	DRAWN BY: BRC	REV:	REV:	REV:
DRAWING NO: TSC - MT PLEASANT, TN - VARIANCE SIGN EXHIBIT				

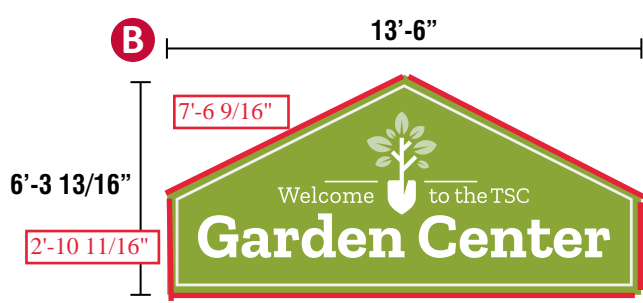
EXHIBIT APPROVED BY:

FRONT ELEVATION - GARDEN CENTER SIGN

SCALE: 1" = 30'-0"



**NOTE: SIGN WILL HAVE 2" ALUMINUM ANGLES FOR MOUNTING AND SHOULD BE ATTACHED WITH THRU BOLTS DIRECTLY TO THE LGC/GREENHOUSE FRAME/TUBING.**



TOTAL SQ FT: 85  
ACTUAL SQ FT: 62

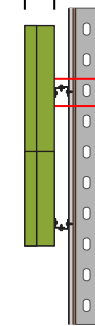
**DETAILS:**

- 8" DEEP SINGLE FACE WALL SIGN
- FLAT WHITE LEXAN FACE W/ DIGITALLY PRINTED GRAPHICS
- INTERNALLY ILLUMINATED WITH LEDS W/ 120V/277V POWER SUPPLIES (MULTI-VOLT)
- PRIMARY FRAME - BENT .090 ALUMINUM
- 0.63 ALUMINUM RETURNS
- 2" RETAINERS

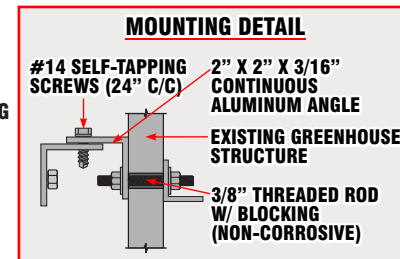
**COLORS:**

**CABINET & RETAINERS:** TSC BRIGHT GREEN  
**FACE:** FLAT LEXAN FACES W/ DIGITALLY PRINTED GRAPHICS

7 1/2"



SEE MOUNTING DETAIL



TSC LIGHT GREEN C23 M6 Y36 K0	TSC BRIGHT GREEN C42 M7 Y96 K17	WHITE
----------------------------------	------------------------------------	-------

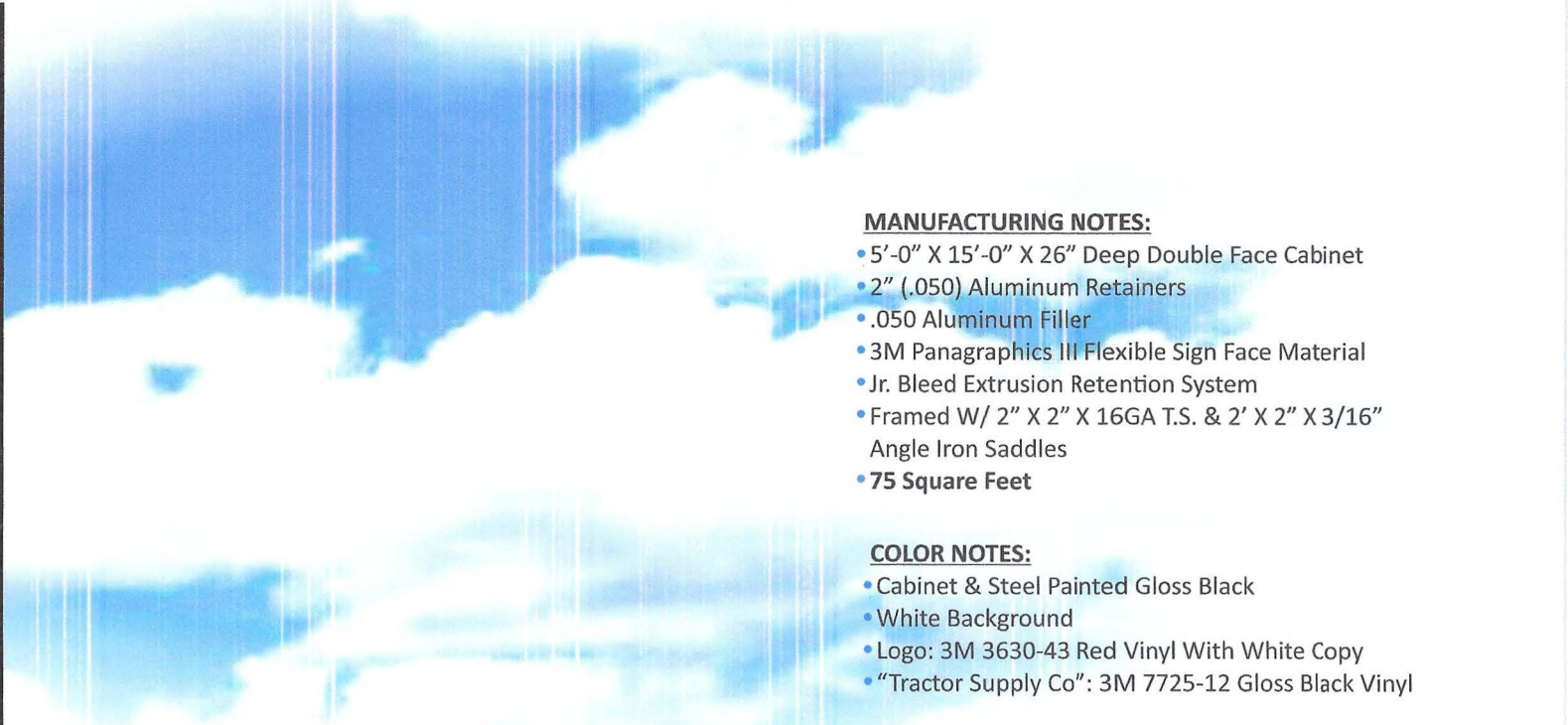
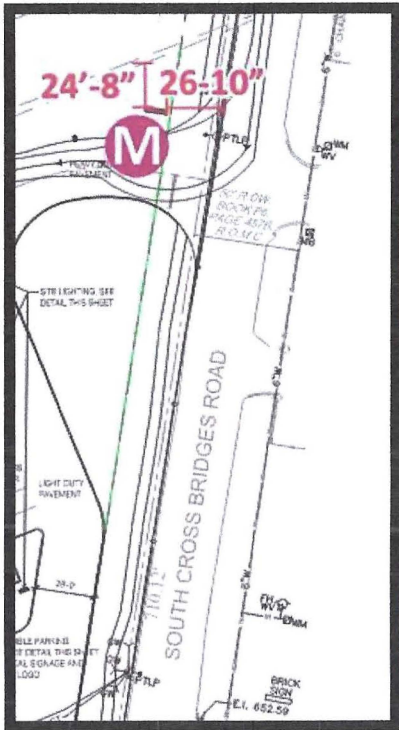
**THIS DRAWING IS FOR CONCEPTUAL PURPOSES ONLY. DUE TO CONSTRUCTION CONSTRAINTS, SIZES AND/OR LAYOUTS MAY CHANGE SLIGHTLY.**

CLIENT: TRACTOR SUPPLY CO	STORE #:	REV: R1 02/13/26 BRC	REV:	REV:
LOCATION: MT PLEASANT, TN	DATE: 10/14/25	REV: R2 03/06/26 BRC	REV:	REV:
ACCOUNT REP: CHAD FAUCHEUX	DRAWN BY: BRC	REV:	REV:	REV:
DRAWING NO: TSC - MT PLEASANT, TN - VARIANCE SIGN EXHIBIT				

EXHIBIT APPROVED BY:

**NEW DOUBLE FACE MONUMENT**

**Setback: Must be behind right-of-way and 12' from edge of pavement (road).**



**MANUFACTURING NOTES:**

- 5'-0" X 15'-0" X 26" Deep Double Face Cabinet
- 2" (.050) Aluminum Retainers
- .050 Aluminum Filler
- 3M Panagraphics III Flexible Sign Face Material
- Jr. Bleed Extrusion Retention System
- Framed W/ 2" X 2" X 16GA T.S. & 2' X 2" X 3/16" Angle Iron Saddles
- **75 Square Feet**

**COLOR NOTES:**

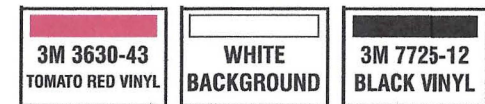
- Cabinet & Steel Painted Gloss Black
- White Background
- Logo: 3M 3630-43 Red Vinyl With White Copy
- "Tractor Supply Co": 3M 7725-12 Gloss Black Vinyl

**ELECTRICAL NOTES:**

- Universal 120/277 Volt 20 Amp Primary Power To Sign & Final Connection By Others
- Internal Illumination With White LEDs
- 2" X 4" Weather Proof J-Boxes



**COLORS:**



SCALE: 3/16" = 1'-0"

THIS DRAWING IS FOR CONCEPTUAL PURPOSES ONLY. DUE TO CONSTRUCTION CONSTRAINTS, SIZES AND/OR LAYOUTS MAY CHANGE SLIGHTLY.

CLIENT: TRACTOR SUPPLY CO	STORE #:	REV: R1 02/13/26 BRC	REV:	REV:
LOCATION: MT PLEASANT, TN	DATE: 10/14/25	REV: R2 03/06/26 BRC	REV:	REV:
ACCOUNT REP: CHAD FAUCHEUX	DRAWN BY: BRC	REV:	REV:	REV:
DRAWING NO: TSC - MT PLEASANT, TN - VARIANCE SIGN EXHIBIT				

EXHIBIT APPROVED BY: