

STRUCTURE #1 SHOWN ON PLAT DESCRIPTION:

- 4,200 sqft barn
- Partial two-story, built to housing codes
- Will be heated and cooled
- Most of the space is a large open living room and kitchen area to be used for family gatherings on holidays, etc.
- Exterior will include a pool, spa, and covered porch area
- The structure will look like a barn but will be built to standard housing codes.
- The exterior of the structure will be a combination of wood, hardi-board, stone and brick. No metal exterior.
- The driveway form Trilogy Lane will be consistent and the same surface as Trilogy Lane, compacted stone/chert base

STRUCTURE #1 SHOWN ON PLAT MAP



FRONT ELEVATION

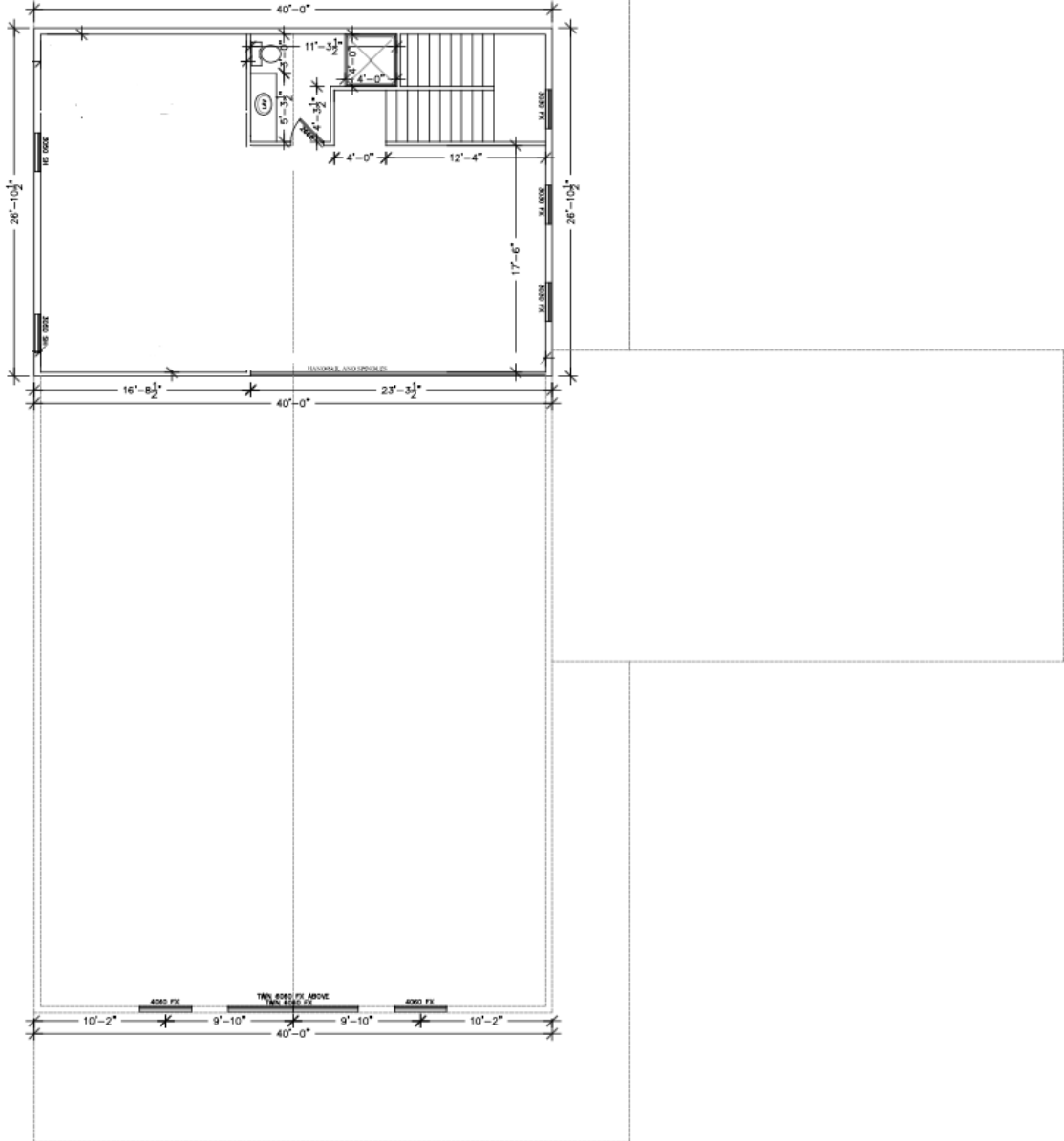
SCALE: 1/4" = 1'



SIDE ELEVATION

SCALE: 1/4" = 1'

STRUCTURE #1 SHOWN ON PLAT MAP



SECOND FLOOR PLAN

SCALE: 1/4" = 1'

STRUCTURE #2 SHOWN ON THE PLAT DESCRIPTION:

- This structure is a single family home, 4,200 sqft
- 3 car garage
- Front and back porches
- 4 bedrooms, 4.5 bath
- The exterior of the structure will be a combination of wood, hardi-board, stone and brick. No metal exterior.
- The driveway form Trilogy Lane will be consistent and the same surface as Trilogy Lane, compacted stone/chert base

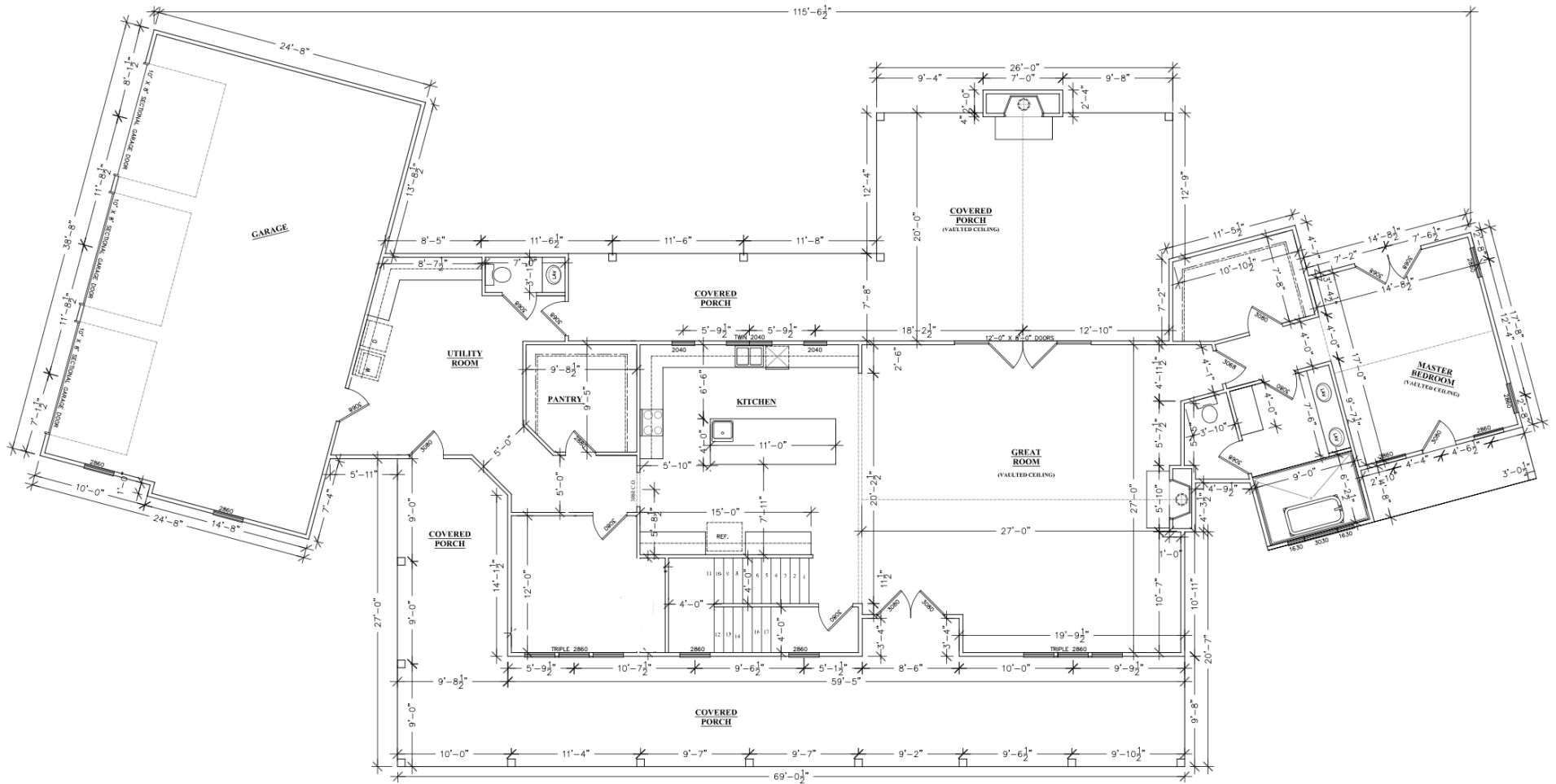
STRCUTURE #2 SHOWN ON PLAT MAP



FRONT ELEVATION

SCALE: 1/4" = 1'

STRCUTURE #2 SHOWN ON PLAT MAP



FIRST FLOOR 2466 SQ.FT.
 SEOND FLOOR 1787 SQ.FT.
TOTAL HEATED 4253 SQ.FT.

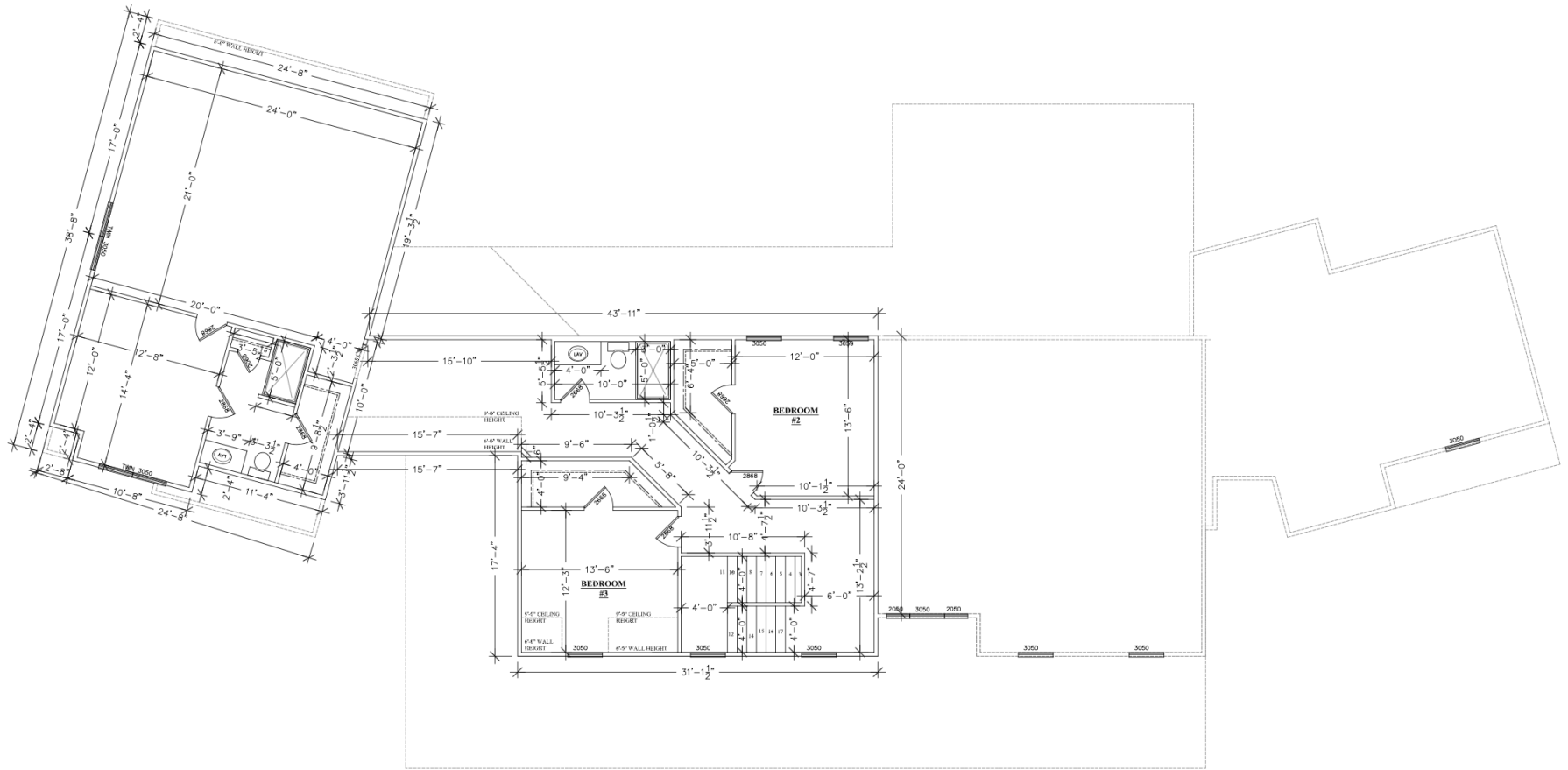
GARAGE 968 SQ.FT.

FRONT PORCH 863 SQ.FT.
 BACK PORCH 758 SQ.FT.

FIRST FLOOR PLAN

SCALE: 1/4" = 1'

STRCUTURE #2 SHOWN ON PLAT MAP



SECOND FLOOR PLAN

SCALE: 1/4" = 1'

Example Exterior Color and Material Selections for Structure #1 and #2 shown on the Plat Map

- Shows a mix of wood, brick and some painted hardy-board surfaces
- Photo 2 shows color selection only, not design.

