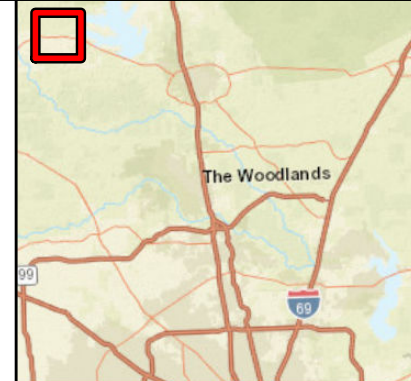


# Sanitary Sewer System Inspection Phasing Plan

## LEGEND

- X 2017 Manhole Inspection
- 2017 CCTV
- Proposed Phase I CCTV (2021/2022)
- Proposed Phase II CCTV (2022/2023)

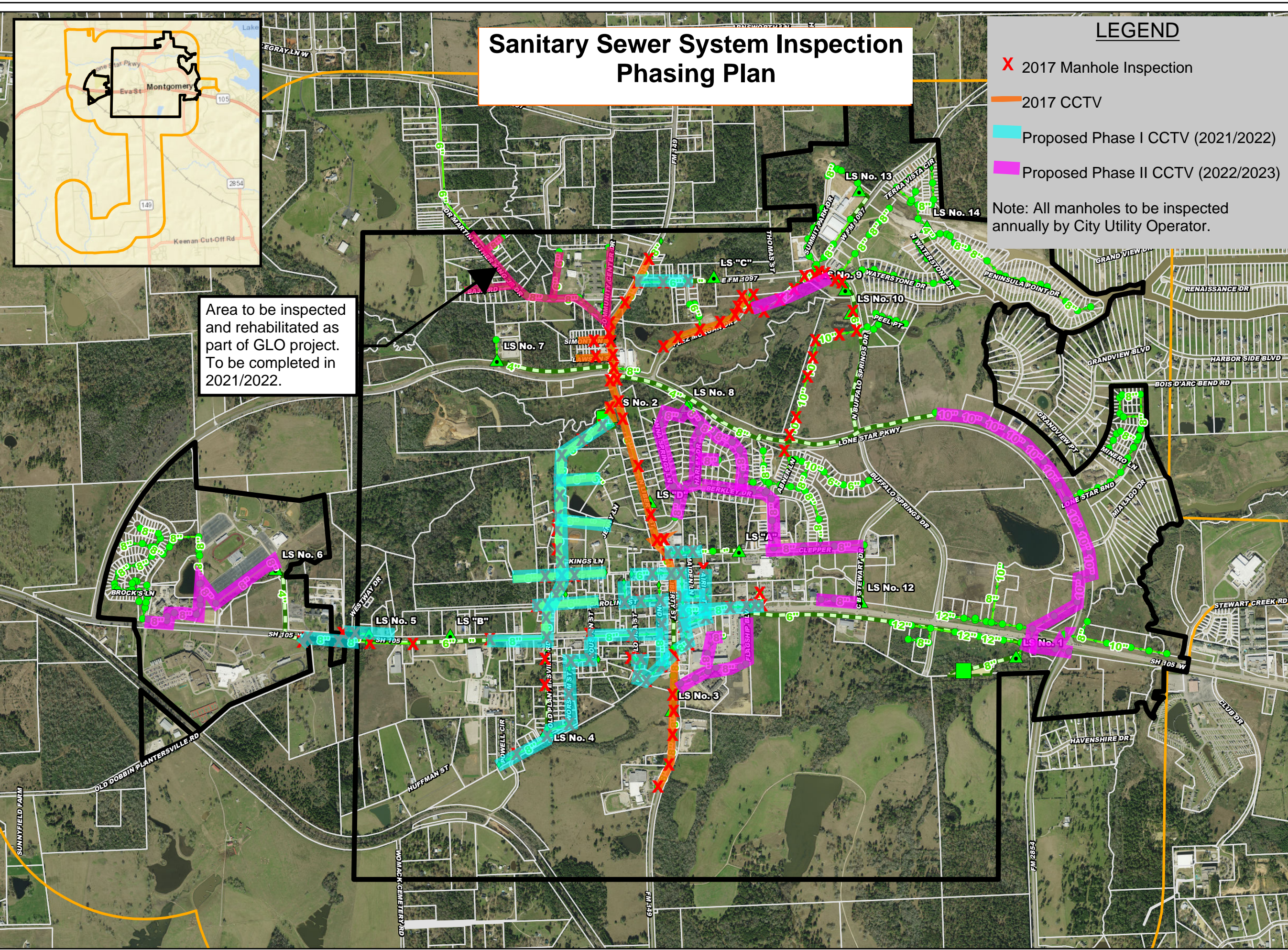
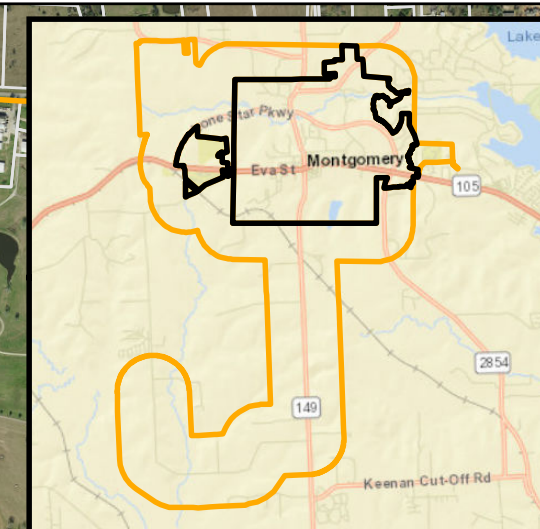
Note: All manholes to be inspected annually by City Utility Operator.



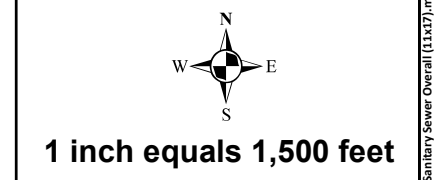
**VICINITY MAP**  
Scale: 1 inch equals 20 miles

- ### LEGEND
- Wastewater Facilities**
- ◆ Cleanout
  - Manhole
  - ▲ Lift Station
  - WWTP
  - Force Main
  - Abd Force Main
  - Gravity Main
  - LS/WWTP Boundary
- Base Layers**
- City Limits
  - City ETJ
  - MCAD Parcels

Area to be inspected and rehabilitated as part of GLO project. To be completed in 2021/2022.



**CITY OF MONTGOMERY**  
MONTGOMERY COUNTY, TEXAS



Disclaimer: This product is offered for informational purposes and may not have been prepared for or be suitable for legal, engineering, or surveying purposes. It does not represent an on-the-ground survey and represents only the approximate relative location of property, governmental and/or political boundaries and related facilities to said boundary. No express warranties are made by Jones & Carter, Inc. concerning the accuracy, completeness, or reliability of the information.

August 11, 2021

User Name: CEH Date: 1/21/2019 Project Number: WS941-0028-400 Path: E:\Projects\Districts\City\Montgomery\VP\GIS\Overall\Sewer Overall (11x17).mxd