



Lift Station No. 8 Force Main Repair

City of Montgomery

This proposal is submitted pursuant to and in accordance with that certain Professional Services Agreement dated May 25, 2021, by and between Ward, Getz & Associates, LLP and the City of Montgomery (the "City").

WGA understands the City plans to repair the Lift Station No. 8 force main, as it was damaged crossing Town Creek. WGA also understands the City plans to hang the proposed force main from the Lone Star Parkway bridge over Town Creek to tie into the existing force main. The force main relocation totals approximately 600 LF.

SCOPE OF WORK

- *Design Phase Services*
 - *WGA will create preliminary site layout and coordinate with the City for approval. This phase will include internal/external project kickoff meetings and the establishment of the design and schedule.*
 - *WGA will develop drawings and specifications for the successful construction of the force main relocation along Lone Star Parkway.*
 - *Design changes initiated by the Client after the design is complete may result in a request for additional authorization.*

- *Construction Administration*
 - *Coordinate advertising for bids, hold a pre-bid conference, answer questions from bidders, hold bid opening, prepare bid tabulation, and prepare recommendation of award.*
 - *Prepare construction contracts and coordinate execution of the same.*
 - *Issue notice to proceed and hold pre-construction meeting.*
 - *Review of construction submittals and RFIs.*
 - *Preparation of pay estimates, change orders, and other associated construction documents.*
 - *General oversight and coordination of construction contract.*

- *Field Project Representation*
 - *Onsite inspection by a Field Project Representative for approximately 10 hours per week (including travel time) for the duration of the projected contract period of performance (60 days).*
 - *Onsite inspection by the project team throughout the duration of the project to attend periodic site visits, final walkthrough inspections, etc.*

- *Reimbursable Expenses*
 - *Includes surveying, construction staking, structural engineer for hanger design, construction materials testing, advertising expenses, and other reimbursable expenses.*



ENGINEERING COST

The cost to perform the scope of services described above is as follows:

Preliminary and Design Phase -	\$6,500	(Time and Materials)
Construction Administration -	\$5,500	(Time and Materials)
Field Project Representation -	\$5,000	(Time and Materials)
Additional Services and Reimbursable Expenses -	\$11,000	(Time and Materials)

WGA requests City Council’s authorization to proceed with the preparation of the design plans for the Lift Station No. 8 Force Main Repair on a time and materials basis as described above.

SCHEDULE

Authorization to Proceed	1	calendar days*
Survey	21	calendar days
Design	14	calendar days
Approval	30	calendar days
Bidding	30	calendar days
Contracts	30	calendar days
Construction	60	calendar days
TOTAL DURATION	186	calendar days

* If approved, the effective start date is the following business day from the date of acceptance.



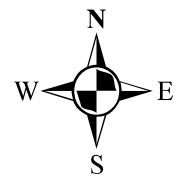
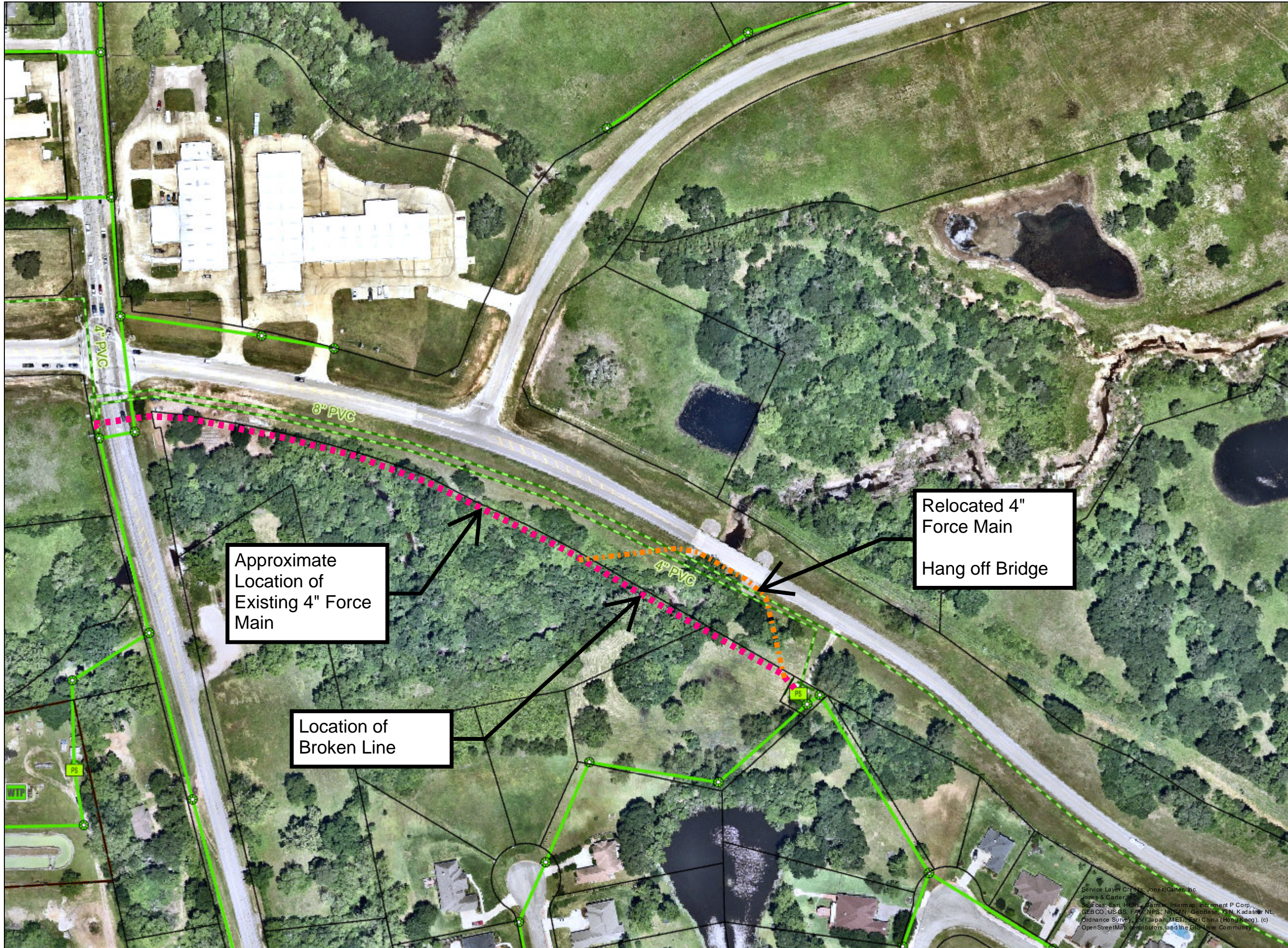
Preliminary Cost Estimate
Lift Station No. 8 Force Main Relocate
City of Montgomery
 August 4, 2022

<u>ITEM</u>	<u>Description</u>	<u>QUANTITY</u>	<u>UNIT</u>	<u>UNIT COST</u>	<u>ITEM TOTAL</u>
1	Move-In and Start-Up, Performance and Payment Bonds, Insurance (Includes Clearing & Grubbing)	1	LS	\$ 7,500	\$ 7,500
2	4-Inch (4") PVC Force Main	480	LF	30	14,000
3	4-Inch (4") Steel Force Main	120	LF	90	11,000
4	Clevis Hangers, Brackets & Anchors	12	EA	1,000	12,000
5	Connect proposed 4-inch (4") Force Main to Existing	2	EA	2,500	5,000
6	Remove and Replace Existing Slope Paving	1	LS	5,000	5,000
7	Stormwater Pollution Prevention	1	LS	5,000	5,000
8	Site Restoration	1	LS	3,000	3,000
9	Traffic Control	1	LS	5,000	5,000
10	Trench Safety	480	LF	2	1,000
Subtotal					\$ 68,500
Contingencies (15%)					10,000
Design Phase					6,500
Construction Administration					5,500
Field Project Representation					5,000
Additional Services & Reimbursable Expenses					11,000
Total Construction Cost					\$ 107,000

Notes:

- (1) All values rounded up to the nearest thousand.
- (2) This estimate is based on my best judgement as a design professional familiar with the construction industry. We cannot and do not guarantee that bids will not vary from this cost estimate.
- (3) This includes topographic survey, construction staking, construction materials testing, reproduction, advertising expenses, and other miscellaneous reimbursable costs.

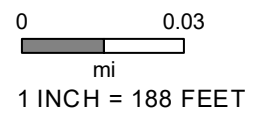
LS 8 Force Main Relocation



LEGEND

- | | |
|--------------------------------|----------------|
| - - - City Limit | MH Label |
| - - - City ETJ | + MH Point |
| - - - MCAD Property Boundaries | FM Label |
| - - - Abandoned Sewer Lines | FM Line |
| - Abd. Gravity Main | GM Label |
| - Abd. Force Main | GM Line |
| + Sewer Discharge Point | Lateral Label |
| Network Structures | Sewer Lateral |
| + Lift Station | LS Boundary |
| + Treatment Plant | WTP Boundary |
| CO Label | mosaic |
| CO Point | Red: mosaic1 |
| Stack | Green: mosaic2 |
| | Blue: mosaic3 |

Date: 8/3/2022



Disclaimer: This product is offered for informational purposes and may not have been prepared for or be suitable for legal, engineering, or surveying purposes. It does not represent an on-the-ground survey and represents only the approximate relative location of property, governmental and/or political boundaries or related facilities to said boundary. No express warranties are made by Jones & Carter, Inc. concerning the accuracy, completeness, reliability, or usability of the information included within this exhibit.

Service Layer Credits: Jones & Carter, Inc.
 Jones & Carter, Inc.
 Sources: Esri, HERE, Garmin, InfoMap, Interment P Corp., GEBCO, USGS, FAO, NPS, NGA, NRCAN, GeoBase, IGN, Kadaster NL, Ordnance Survey, Esri, Japan, METI, Esri, China (Hong Kong), (c) OpenStreetMap contributors, and the GIS User Community