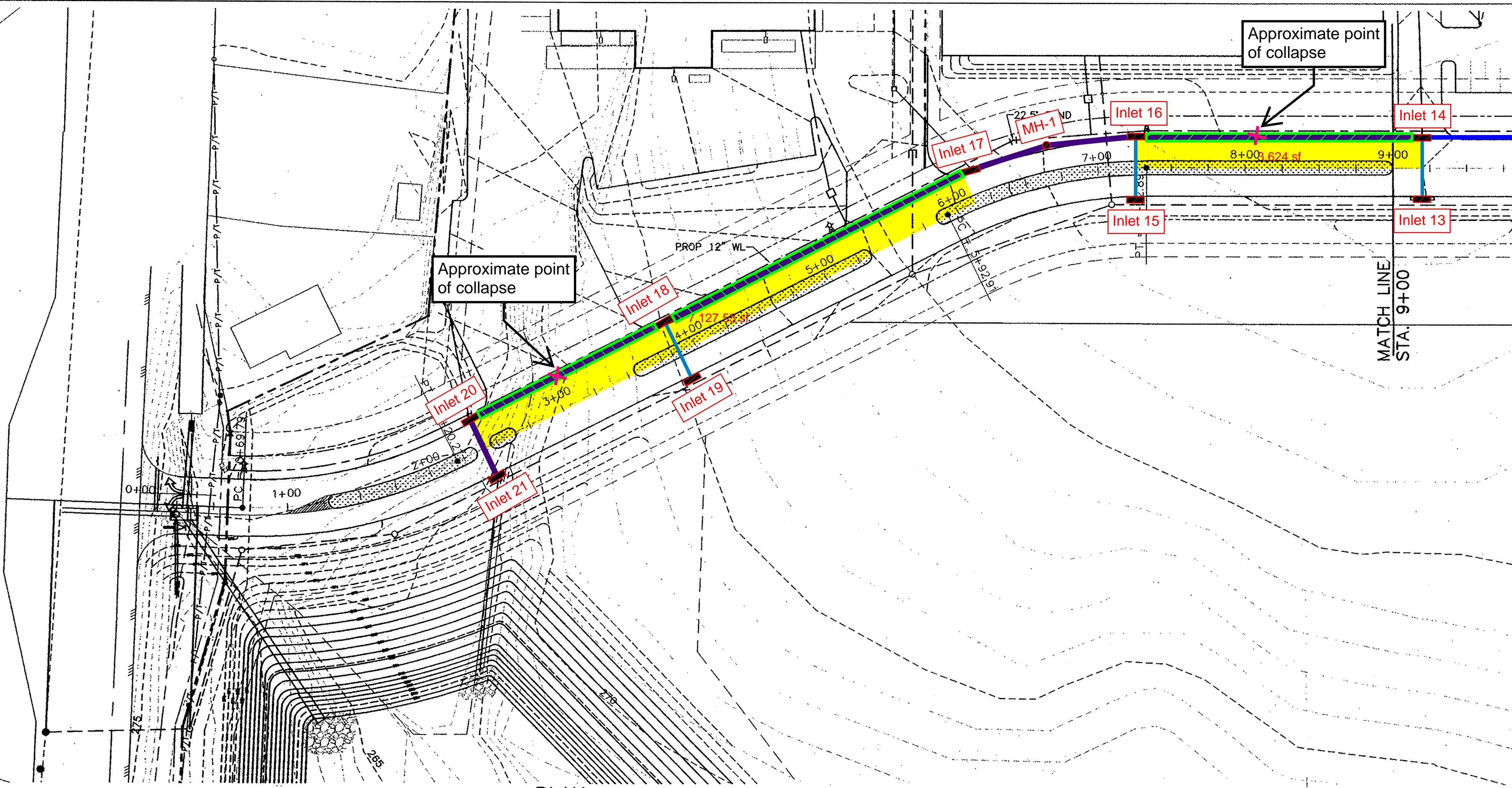


**LEGEND**

- 18" HDPE
- 36" HDPE
- 48" HDPE
- 18" RCP Replacement
- 36" RCP Replacement
- 48" RCP Replacement
- Collapse Location
- Storm Sewer Inlet
- Storm Sewer Manhole



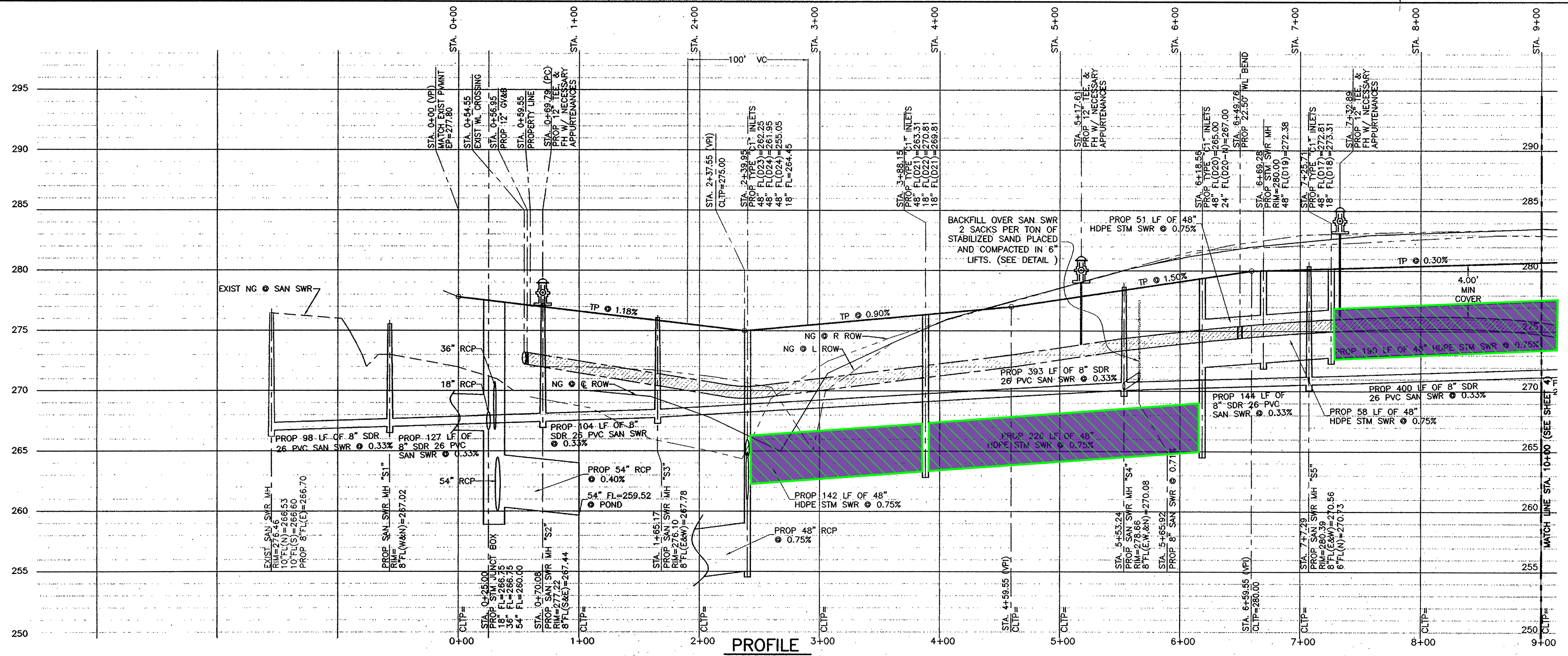
**LEGEND:**

- FF - FINISH FLOOR
- TW - TOP OF WALK
- TC - TOP OF CURB
- TP - TOP OF PAVEMENT
- FL - FLOW LINE
- TG - TOP OF GRATE
- MEP - MATCH EXISTING PAVEMENT
- I = 11.80 IN/HR (100 YEAR STORM EVENT)
- TC = 10 MINUTES

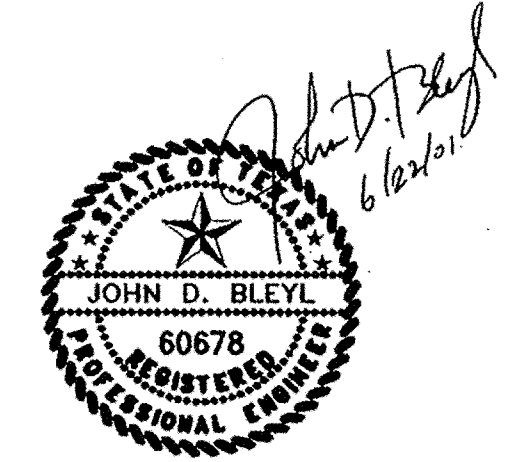
➔ DIRECTION OF TRAFFIC

- DRAWING NOTES:**
- REVISIONS TO THESE ENGINEERING PLANS MUST BE AUTHORIZED BY BLEYL & ASSOCIATES PRIOR TO CONSTRUCTION.
  - THE CONTRACTOR SHALL:
    - NOTIFY BLEYL & ASSOCIATES AND THE MONTGOMERY COUNTY ENGINEER PRIOR TO CONSTRUCTION.
  - FLOOD PLAIN: THIS PROJECT LIES WITHIN ZONE "X" IN ACCORDANCE WITH FEMA MAP PANEL NO. 189, COMMUNITY MAP PANEL NO. 48339C0189 F, CONROE, MONTGOMERY COUNTY, TEXAS EFFECTIVE DATE DECEMBER, 19, 1996.
  - ELEVATIONS ARE BASED UPON F.I.R.M. BENCHMARK RM 140, ELEV.=242.71.
  - HYDROMULCH ALL DISTURBED AREAS.

PLAN  
SCALE: 1" = 50'



PROFILE  
SCALE: HORIZONTAL: 1" = 50' VERTICAL: 1" = 5'



REVISION					
REV.	DATE	BY	CHK	APP	COMMENTS
0	06/21/01	LPF			ISSUED FOR APPROVAL

**Bleyl & Associates**  
Project Engineering & Management

300 W. DAVIS SUITE 535  
CONROE, TEXAS 77301  
936-441-7833 PHONE  
936-766-3833 FAX

**PLAN & PROFILE**  
**FLAGSHIP BOULEVARD**  
STA. 0+00 - 9+00  
MONTGOMERY TRACE CENTER  
A 38.229 ACRE TRACT OF LAND  
IN THE JOHN CORNER SURVEY, A-8  
MONTGOMERY COUNTY, TEXAS

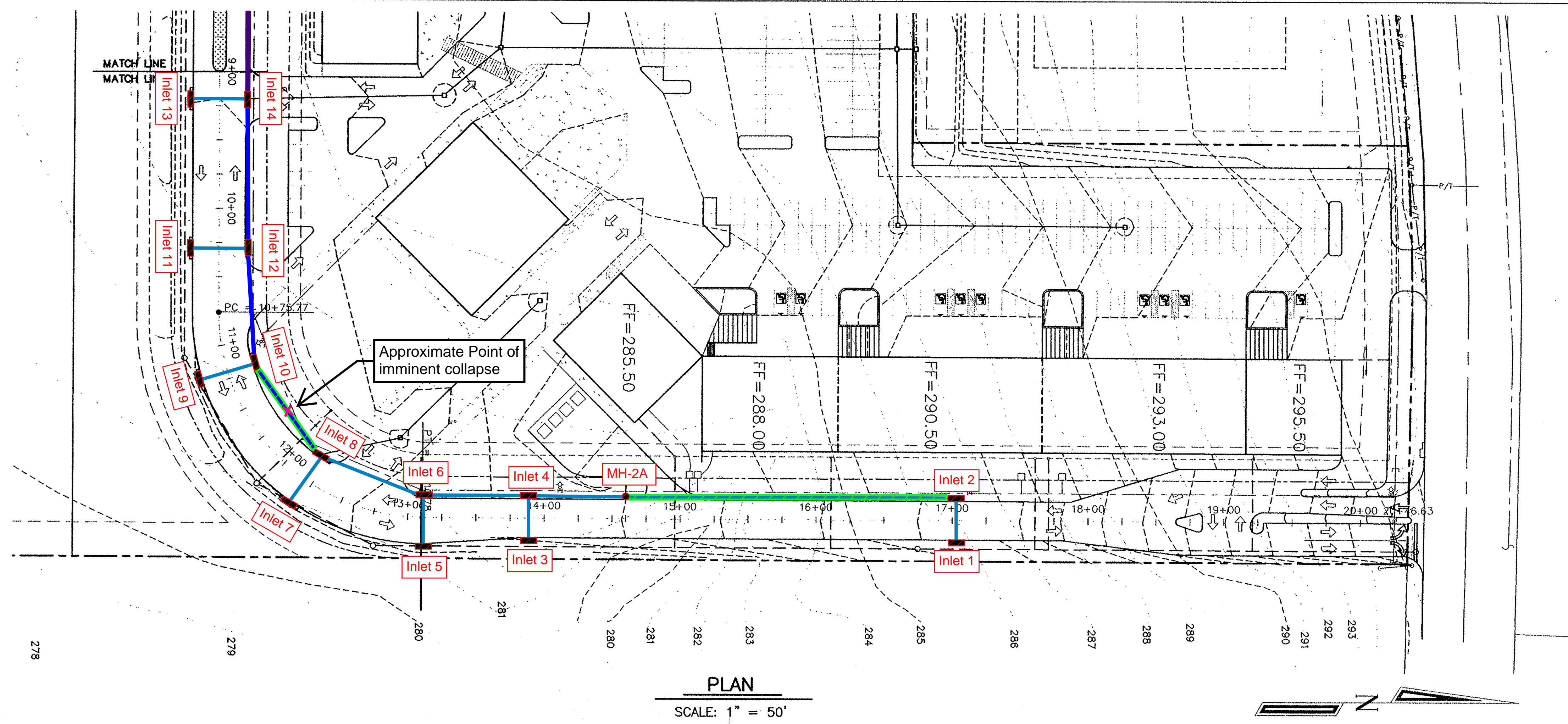
SCALE: 1"=50' HORIZ.; 1"=5' VERT. PREPARED FOR:  
DATE: JUNE, 2001 ROBERT EASLEY  
DRAWN BY: LANCE FERRY 1450 CAMPBELL  
PROJECT MANAGER: JOHN D. GERDES, E.I.T. HOUSTON, TX 70555  
(281) 356-7934

JOB NO. 1220 SHEET 9 OF 14



**LEGEND**

- 18" HDPE	
- 36" HDPE	
- 48" HDPE	
- 18" RCP Replacement	
- 36" RCP Replacement	
- 48" RCP Replacement	
- Collapse Location	
- Storm Sewer Inlet	
- Storm Sewer Manhole	



**PLAN**  
SCALE: 1" = 50'

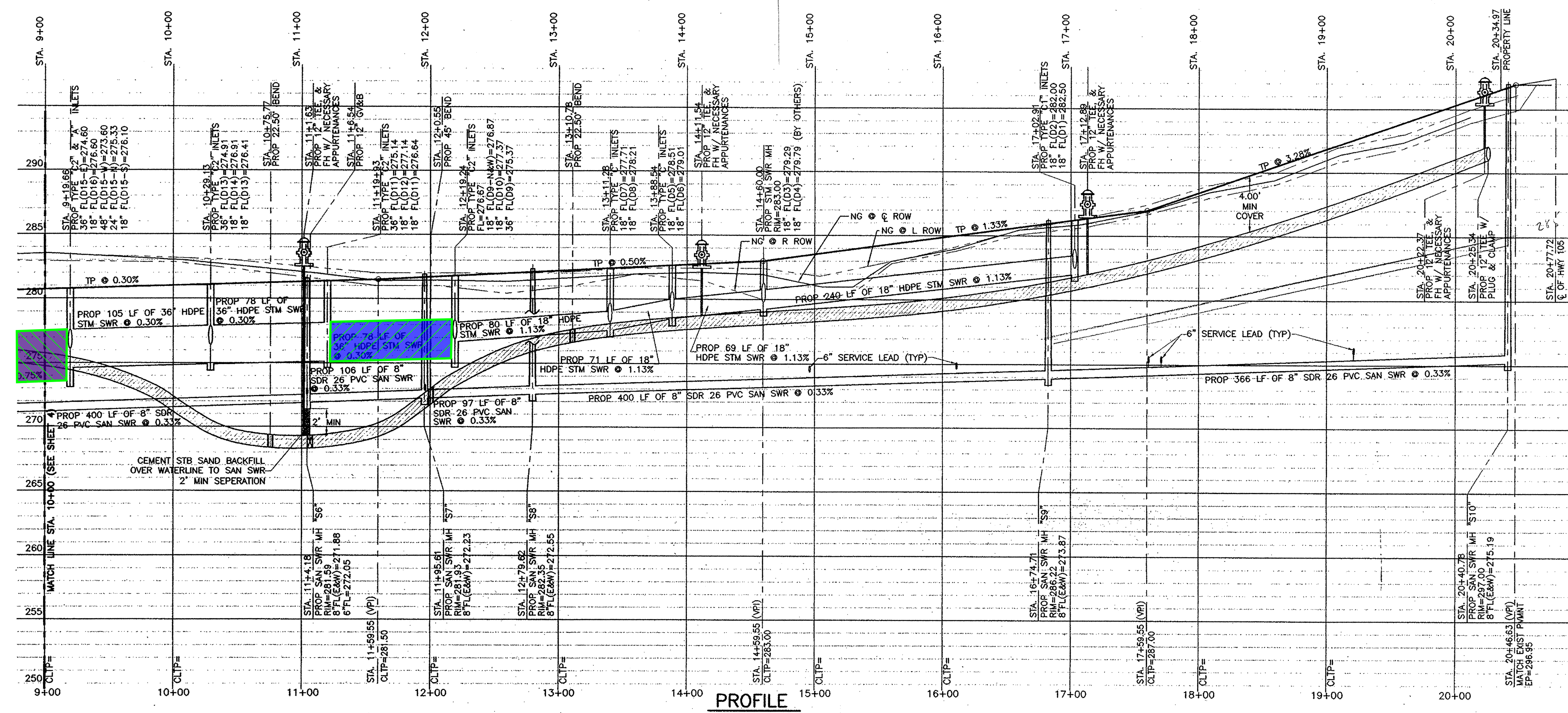
**LEGEND:**

FF	- FINISH FLOOR
TW	- TOP OF WALK
TC	- TOP OF CURB
TP	- TOP OF PAVEMENT
FL	- FLOW LINE
TG	- TOP OF GRATE
MEP	- MATCH EXISTING PAVEMENT
I	= 11.80 IN/HR (100 YEAR STORM EVENT)
TC	= 10 MINUTES

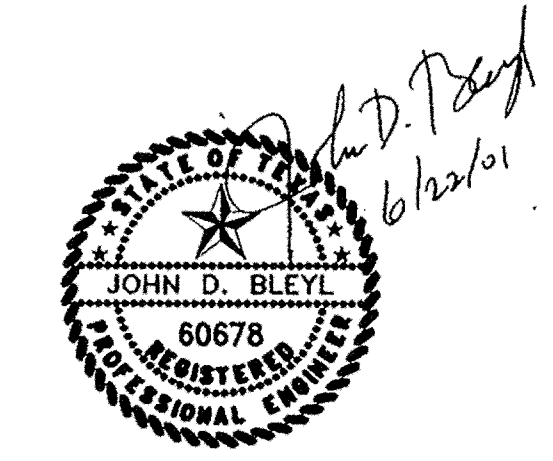
DIRECTION OF TRAFFIC

**DRAWING NOTES:**

- REVISIONS TO THESE ENGINEERING PLANS MUST BE AUTHORIZED BY BLEYL & ASSOCIATES PRIOR TO CONSTRUCTION.
- THE CONTRACTOR SHALL:
  - NOTIFY BLEYL & ASSOCIATES AND THE MONTGOMERY COUNTY ENGINEER PRIOR TO CONSTRUCTION.
- FLOOD PLAIN: THIS PROJECT LIES WITHIN ZONE "X" IN ACCORDANCE WITH FEMA MAP PANEL NO. 189, COMMUNITY MAP PANEL NO. 48339C0189 F. CONROE, MONTGOMERY COUNTY, TEXAS EFFECTIVE DATE DECEMBER, 19, 1996.
- ELEVATIONS ARE BASED UPON F.I.R.M. BENCHMARK RM 140, ELEV.=242.71.
- HYDROMULCH ALL DISTURBED AREAS.



**PROFILE**  
SCALE: HORIZONTAL: 1" = 50' VERTICAL: 1" = 5'



REVISION					
REV.	DATE	BY	CHK	APP	COMMENTS
0	06/21/01	LPF			ISSUED FOR APPROVAL

**B & A Bleyl & Associates**  
Project Engineering & Management  
300 W. DAVIS SUITE 635  
CONROE, TEXAS 77301  
936-441-7833 PHONE  
936-760-3033 FAX

**PLAN & PROFILE**  
FLAGSHIP BOULEVARD  
STA. 9+00 - 20+46.63  
MONTGOMERY TRACE CENTER  
A 38.229 ACRE TRACT OF LAND  
IN THE JOHN CORNER SURVEY, A-8  
MONTGOMERY COUNTY, TEXAS

SCALE: 1"=50' HORZ; 1"=5' VERT.  
DATE: JUNE, 2001  
DRAWN BY: LANCE FERRY  
PROJECT MANAGER: JOHN D. GERDES, E.I.T.

PREPARED FOR:  
ROBERT EASLEY  
1450 CAMPBELL  
HOUSTON, TX 70555  
(281) 356-7934