



Lawson and Simonton Waterline Loop

City of Montgomery

WGA Proposal No. P2025-026

This proposal is submitted pursuant to and in accordance with that certain Professional Services Agreement dated May 25, 2021, by and between Ward, Getz & Associates LLC and the City of Montgomery (the "City").

PROJECT UNDERSTANDING

WGA understands SPT Montgomery (the "Developer") is required to extend the existing waterline from Simonton St. and upsize the existing waterline along Lawson creating a waterline loop to serve the proposed development.

SCOPE OF SERVICES

Per our understanding of the requirements of the service we have developed the following scope of work:

1) Preliminary and Design Phase Services:

- a) WGA will create preliminary site layout and coordinate with the City for approval. This phase will include internal/ external project kickoff meetings and the establishment of the design and schedule.
- b) WGA will develop drawings and specifications for the successful construction of the waterline loop from Simonton St. to Lawson St.
- c) Design changes initiated by the Client after the design is complete may result in a request for additional authorization.
- d) Obtain approvals from TCEQ and TxDOT.

2) Bid Phase

- a) Coordinate advertising for bids, hold a pre-bid conference, answer questions from bidders, hold a bid opening, prepare bid tabulation, and prepare recommendation of award.

3) Construction Administration

- a) Prepare construction contracts and coordinate execution of the same.
- b) Issue notice to proceed and hold pre-construction meeting.
- c) Review of construction submittals and RFIs.
- d) Preparation of pay estimates, change orders, and other associated construction documents.
- e) General oversight and coordination of construction contracts.



4) Field Project Representation

- a) Onsite inspection by a Field Project Representative for approximately 4 hours per week (including travel time) during active construction for the duration of the projected contract period of performance (45 calendar days).
- b) Onsite inspection by the project team throughout the duration to attend periodic site visits, final walkthrough inspections, etc.

5) Construction Materials Testing

- a) Includes reimbursable expenses of construction materials testing incurred during the construction of the proposed waterline.

6) Reimbursable Expenses

- a) Includes surveying, potholing, construction staking, construction materials testing, advertising expenses, and other reimbursable expenses.

ASSUMPTIONS AND EXCLUSIONS

- The land plan provided by the Developer is what WGA will be basing their design on.
- Any updates to the scope of work will result in a delay in completion of the design and construction of the waterline.
- Construction services over 20% of original contract period of performance and will be billed hourly.
- Survey is not included in and will be paid directly by the Developer including topo survey, metes and bounds, and any existing features including easements, utilities, or any other pertinent information needed to complete the project.
- Does not include design of the "Lone Star Parkway Waterline" to serve the multi-family tract.

ANTICIPATED SCHEDULE

Client Authorization	1	Calendar Days
Preliminary & Design Services	90	Calendar Days
Bid Phase	30	Calendar Days
Contracts	21	Calendar Days
Construction	45	Calendar Days
	186	Calendar Days
Delays outside Engineers control are not included and could impact estimated schedule for the project including the required deposits to be made by the Developer to find each phase of the project.		



ENGINEERING COST

COMPENSATION SUMMARY		
The Services set forth in the Proposal will be compensated on the following basis:		
Phase Name	Fee Type	Standard Fee
Preliminary & Design Services	LS	\$29,000
Bid Phase	LS	\$6,000
Construction Administration	TM	\$16,000
Field Project Representation	TM	\$10,000
Construction Materials Testing	TM	\$11,000
Expenses & Fees	TM	\$1,000
Total Proposed Engineering Fees		\$73,000

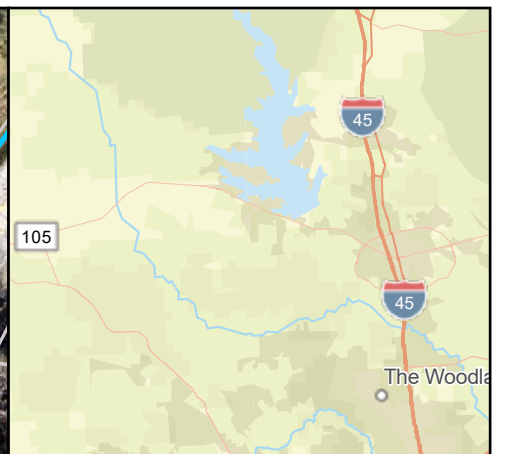
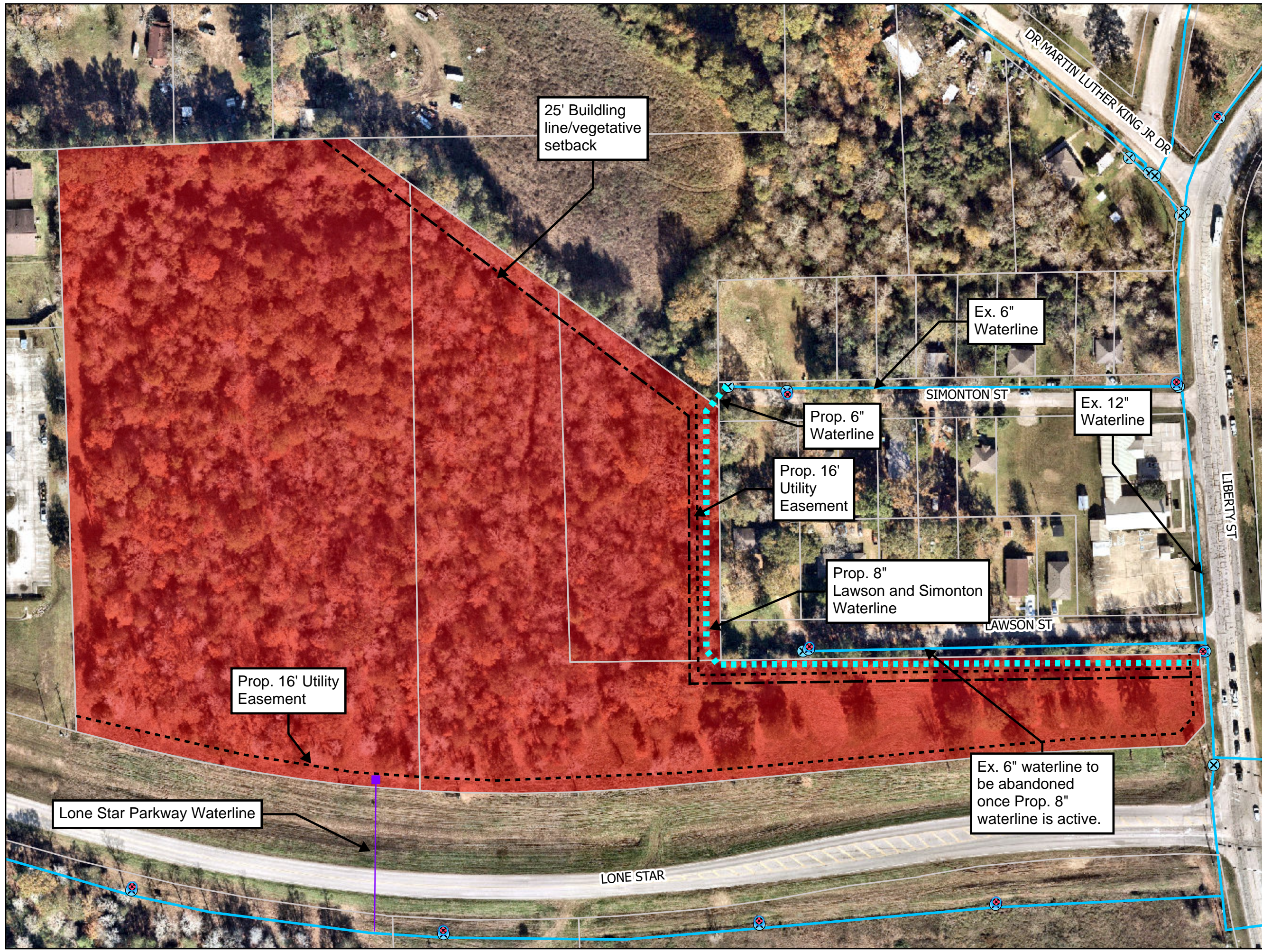
Regards,

A handwritten signature in blue ink that reads 'Chris Roznovsky'.

Chris Roznovsky, PE
Partner/Practice Leader

6/18/2025

Date



Legend

- City Limits
- City Limits
- Extrateritorial Jurisdictions
- Tax Parcels

0 0.02 0.04
mi

Exhibit C: Public Waterline Extension



Disclaimer: This product is offered for graphical purposes only and may not be suitable for legal, engineering, or surveying purposes. The information shown on this exhibit represents the approximate location of property, municipal boundaries or facilities.





Preliminary Cost Estimate
Lawson and Simonton Public Waterline Loop
Superior Properties

6/11/2025

Item No.	Description	Quantity	Unit	Unit Price	Cost
General					
1	Mobilization, Bonds, and Insurance	1	LS	\$ 10,000	\$ 10,000
2	Construction Staking	1	LS	2,500	2,500
3	Trench Safety System	930	LF	1	900
4	SWPPP	1	LS	4,000	4,000
5	Traffic Control Plan	1	LS	4,000	4,000
5	Clearing and Grubbing	1	LS	5,000	5,000
6	Site Restoration	1	LS	5,000	5,000
Water					
7	8-Inch C900 PVC Waterline (Open Cut Construction)	930	LF	60	55,800
8	6-Inch C900 PVC Waterline (Open Cut Construction)	30	LF	50	1,500
9	8-Inch Gate Valve	2	EA	4,000	9,300
10	6-Inch Wet Connect & Removal of Plug and Clamp	1	EA	2,000	2,000
11	8-Inch TS&V	1	EA	6,000	6,000
12	Abandon Ex. 6" Waterline (Cut, Plug, and Abandon)	1	LS	5,000	5,000
13	Fire Hydrant	3	EA	8,000	24,000
14	Meter Reconnect	5	EA	\$ 1,000	\$ 5,000
				Construction Subtotal	\$ 140,000
				Contingencies (15%)	\$ 21,000
				Engineering - Preliminary, Design, and Bidding	\$ 35,000
				Construction Administration and Inspection	\$ 26,000
				Expenses and Fees	\$ 1,000
				Construction Materials Testing	\$ 11,000
				Total	\$ 234,000

Notes:

- 1 All values rounded up to the nearest thousand.
- 2 This estimate is based on my best judgement as a design professional familiar with the construction industry. We cannot and do not guarantee that bids will not vary from this cost estimate.
- 3 This is not a proposal for engineering services but an estimate for planning purposes.