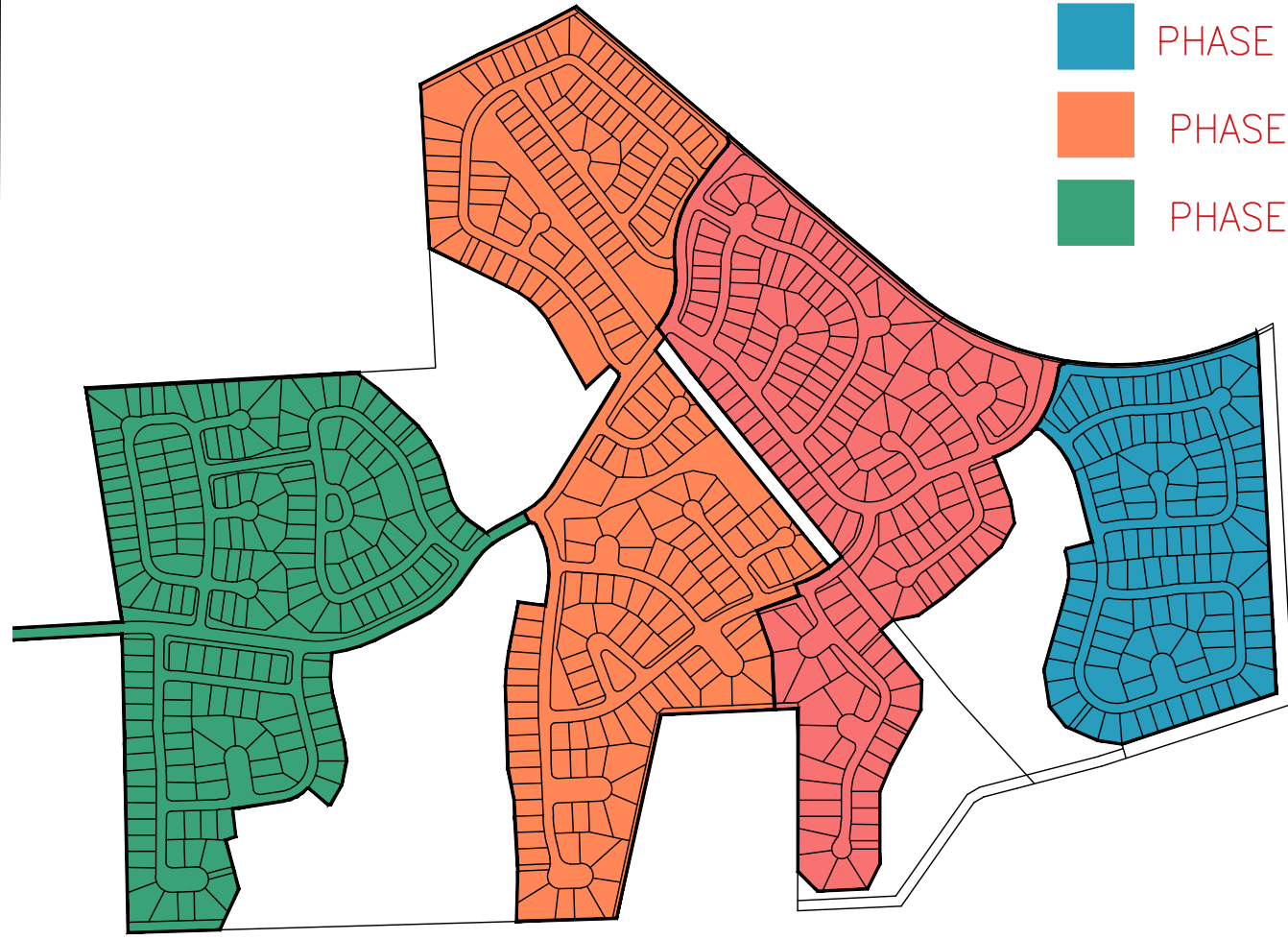


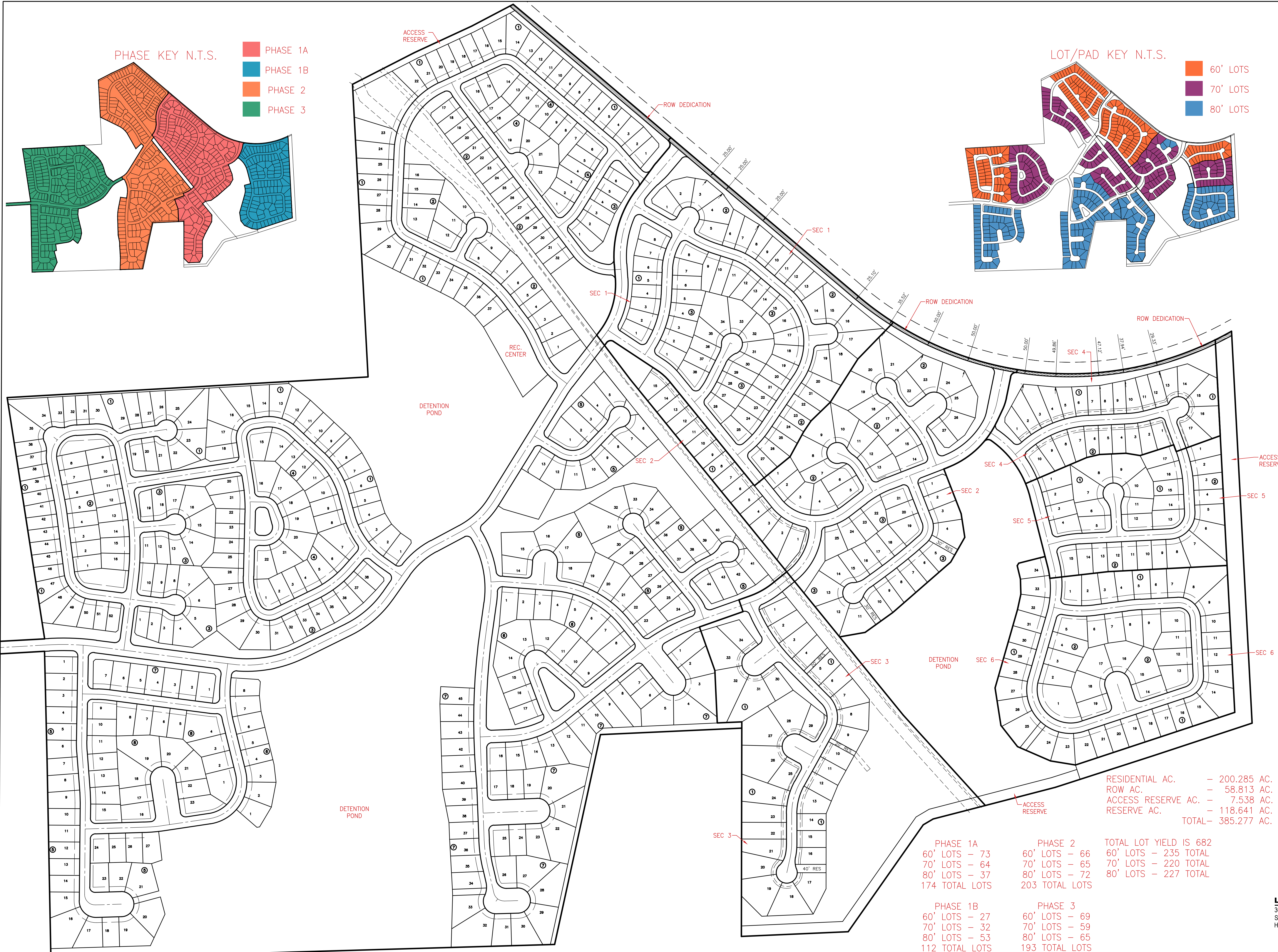
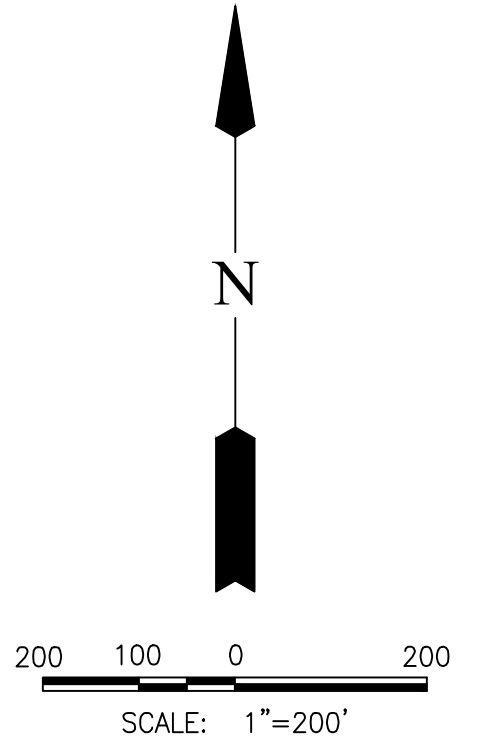
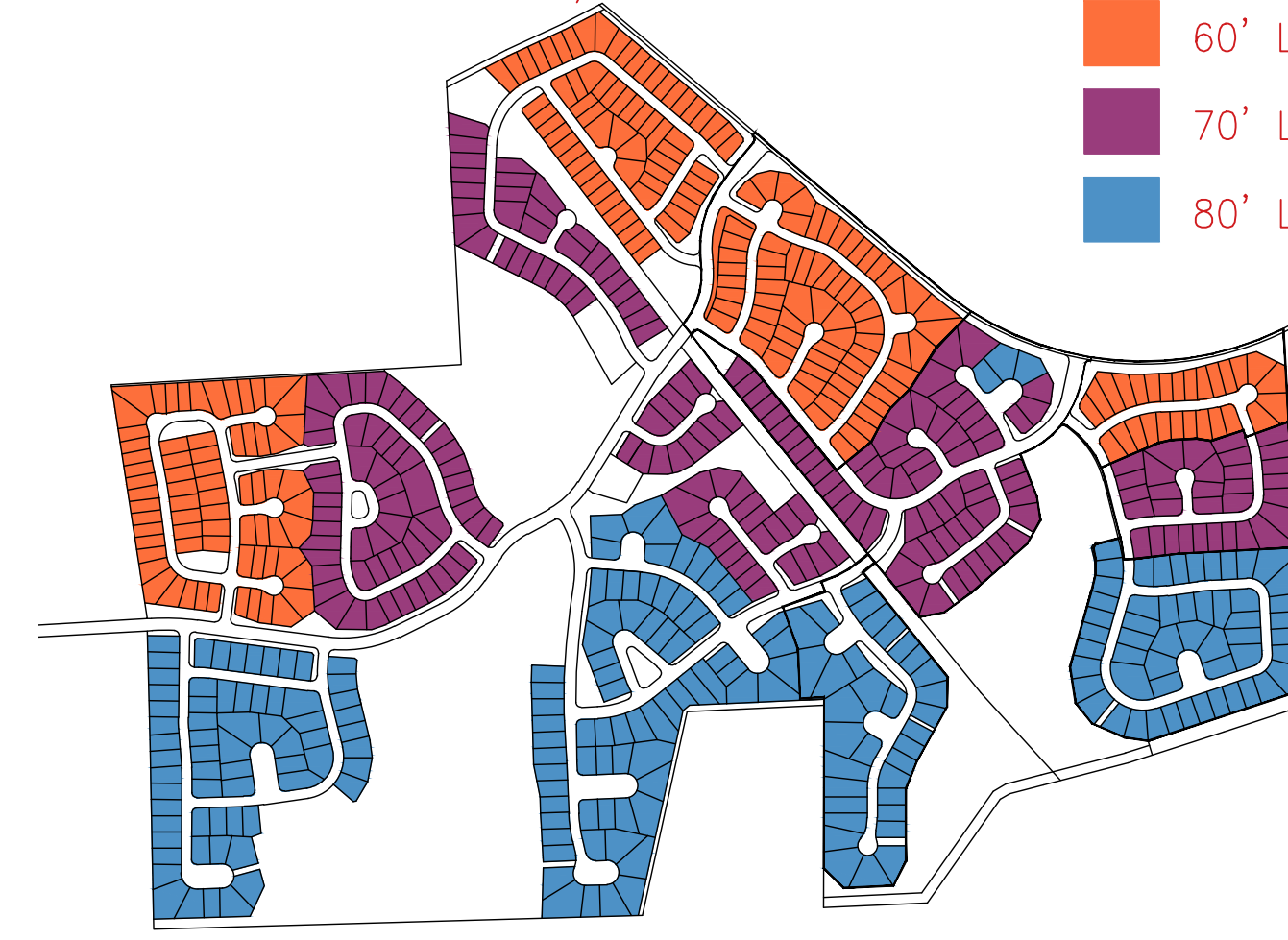
PHASE KEY N.T.S.

- PHASE 1A
- PHASE 1B
- PHASE 2
- PHASE 3



LOT/PAD KEY N.T.S.

- 60' LOTS
- 70' LOTS
- 80' LOTS



TOTAL LOT YIELD IS 682

BUILDING LINES & EASEMENTS:
 25' FRONT BUILDING LINES AND
 15' SIDE LOT BUILDING LINES
 ADJACENT TO ROW. FRONT LOT
 UTILITY EASEMENTS.

RESIDENTIAL AC. - 200.285 AC.
 ROW AC. - 58.813 AC.
 ACCESS RESERVE AC. - 7.538 AC.
 RESERVE AC. - 118.641 AC.
 TOTAL - 385.277 AC.

REDBIRD MEADOWS
HARDCOPY

April 6, 2023

JOB NO. 2980-0000-000

PHASE 1A	PHASE 2	TOTAL LOT YIELD IS 682
60' LOTS - 73	60' LOTS - 66	60' LOTS - 235 TOTAL
70' LOTS - 64	70' LOTS - 65	70' LOTS - 220 TOTAL
80' LOTS - 37	80' LOTS - 72	80' LOTS - 227 TOTAL
174 TOTAL LOTS	203 TOTAL LOTS	

PHASE 1B	PHASE 3
60' LOTS - 27	60' LOTS - 69
70' LOTS - 32	70' LOTS - 59
80' LOTS - 53	80' LOTS - 65
112 TOTAL LOTS	193 TOTAL LOTS

LJA Engineering, Inc.
 3600 W Sam Houston Parkway S
 Suite 600
 Houston, Texas 77042

Phone 713.953.5200
 Fax 713.953.5026
 FRN - F-1386

MVAR CHECK: SURVEY
 PLATTING MGR.
 LAST SAVED: 4/6/2023 1:23 PM BY: SHAWN MCCOY - PLOT DATE: 4/6/2023 1:32 PM BY: SHAWN MCCOY
 PLOT NAME: E:\PROJECTS\2023\2980\2980-0000\HARDCOPY\REDBIRD_MEADOWS_HARDCOPY.dwg