



B R E A K I N G

STRONGHOLDS

HOPE FOR TOMORROW

WWW.BREAKINGSTRONGHOLDS.COM

B R E A K I N G STRONGHOLDS

Season 1

Streaming/TV Series with 8 Episodes

Breaking Strongholds Season 1 brings awareness to many of the issues people face today... broken families, suicidal ideation, abandonment, depression, deception, and more. Like a modern-day parable, each episode creatively weaves God's truths into the storyline pointing to Jesus, the only One capable of truly Breaking Strongholds.

SUICIDE: THE SILENT EPIDEMIC

Suicide is the **SECOND** leading cause of death for ages **10-24** (2015 CDC WISQARS). Each day in our nation an average of **over 5,240 young people, grades 7-12, attempt suicide.** (2015 CDC WISQARS)

**Join Us in the Effort to Impact
the Next Generation!**



Reflective Media Productions is a subsidiary of Reflective Life Ministries, a 501c3 nonprofit.
All donations are tax-deductible (EIN-26-3979164)
Contact Terry Weaver at terry@reflectivemedia.org for sponsorship information.

PURPOSE

Breaking Strongholds is a faith-based streaming series with eight episodes addressing spiritual and mental wellness issues such as teen suicide, depression, abandonment, spiritual darkness, and more. The graphic below provides a more detailed look at the main characters of the series and the issues that are addressed through their relationships.





Reflective Media Productions is a subsidiary of Reflective Life Ministries, a 501c3 nonprofit.
All donations are tax-deductible (EIN-26-3979164)
Contact Terry Weaver at terry@reflectivemedia.org for sponsorship information.

SEASON ONE

The first episode, now complete, was filmed in 2019 around the small town of Montgomery, TX. Filming for episodes two through four started in 2020 and are due to release in 2021. Subsequent episodes will begin production in summer 2021 with the goal of completion at the end of 2021.

Tagline: When a teen's plan to end his life is interrupted by a mysterious stranger, he finds an unlikely mentor and uncovers the dark secret motives of the town's newest celebrity.

EPISODE 1 - THE SITUATION

TITLE SPONSOR: SPIRIT OF TEXAS BANK

The spiritual realm affects the physical world. When internationally known thought leader and self-help guru, Redmond Quinn, moves his headquarters to the small town of Montgomery, he brings economic growth and media fame—but at what cost?

EPISODE 2 - THE ADVOCATES

TITLE SPONSOR: TWFG (THE WOODLANDS FINANCIAL GROUP)

Ethan is reaching a crisis point as Ryan meets the mysterious gunman. Pastor Owen and Justin explain the spiritual dangers of Redmond Quinn's Clarity Way.

EPISODE 3 - THE MESSAGE

TITLE SPONSOR: SPIRIT OF TEXAS BANK

Hazel receives a haunting voice message that might change everything. Peyton learns how to voice her concerns to Ryan about his state of mind.

EPISODE 4 - THE MOTHER WOUNDS

TITLE SPONSOR: THE RIESER FAMILY FOUNDATION

Ella's message sheds new light on Lindsay's disappearance but brings up painful feelings of shame and abandonment for Grace. Riley resents that she is forced into the uncomfortable position of facing her feelings about her own mother's death.

EPISODE 5 - 8

Coming Soon!

Reflective Media Productions is a subsidiary of Reflective Life Ministries, a 501c3 nonprofit.

All donations are tax-deductible (EIN-26-3979164)

Contact Terry Weaver at terry@reflectivemedia.org for sponsorship information.

BREAKING STRONGHOLDS - SEASON ONE

CHARACTER PROFILES



Ethan James

Terry Weaver

A veteran, single parent and police detective, Ethan is torn between the guilt of his past and fear of the future. For the sake of his kids, he summons the courage to accept help and finds a community of strength and healing.



Grace Williams

Tori Garmon

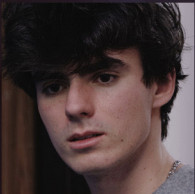
As a passionate school crisis counselor, Grace is willing to push some boundaries to help hurting kids. But when her painful past is brought into the light, her confidence falters and the old lies she believed about herself resurface. How will she fight them?



Lindsey Jordan

Courtney Laine

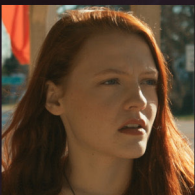
Lindsey is a young teacher and Grace's best friend. She has a history of being "too trusting," and now, she is missing. Grace goes straight to the police, convinced Lindsey is being held against her will.



Ryan James

John Chance

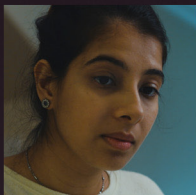
Ryan wants connection and someone to listen as he asks life's hardest questions. His dad is distant, his sister avoids emotions and his childhood crush has made it clear that they are "just friends." Just when Ryan has decided there's no reason to go on, everything changes.



Rylie James

Amy Kramr

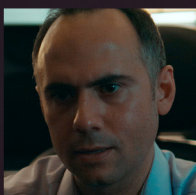
In order to avoid feelings about her mother's death, Rylie has focused on success and achievement in high school. Expectations are high that she will go on to a prestigious college but will she choose a very different path?



Peyton Ray

Gunjan Talwar

Kind and compassionate, Peyton has been a lifelong friend to Rylie and Ryan. After learning to recognize the signs of suicidal ideation, she knows she must talk to Ryan and find out if he needs help.



Redmond Quinn

Rick Olvera

Redmond Quinn is a famous, wealthy, “thought leader” who recently moved his “Clarity Ranch” headquarters to the small Texas town of Montgomery. Upon his arrival, his followers moved to the area and the town’s economy skyrocketed--along with growing evidence of spiritual darkness. What is at the heart of Quinn’s teaching and why is he really there?



Pastor Owen Chamberlain

James Page

Some members of Pastor Owen’s flock are being led astray by attractive lies. As he faces this challenge, the pastor has two goals:

1. To teach his congregation how to fight the enemy’s lies with God’s Armor and
2. To get past the defenses of Hazel Lewis, a strong woman of God whose heart he is determined to win!



Hazel Lewis

Justina Page

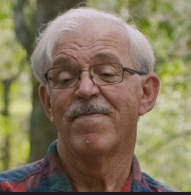
Hazel is no stranger to struggle. She has used her darkest circumstances as a platform for ministry (We Are Stronger) and it’s no surprise she has caught the eye of Pastor Owen Chamberlain. She and her sister, Janelle, raised their niece, Grace Williams, who came to them as a teen and they continue to be her spiritual mentors to this day.



Derek Jackson

Gerald Pressley

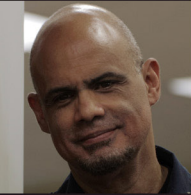
As a newly appointed detective who likes the teaching of Redmond Quinn, Derek has become a person that Quinn’s organization hopes to promote. However, Ethan doesn’t want a partner and Grace doesn’t trust his affinity toward Quinn’s Clarity Way.



Benjamin Maywin

Calvin Pearson

Benjamin is the first person to see the depth of Ryan's despair. With heroism and heartache in his past, he is familiar with life's lowest points and knows how to face them head on. He is a trusted friend with a rich and unexpected past.



Vic Raphael

Ulises Larramendi

Vic is chaplain to the police, firefighters and first responders of Montgomery. As an Army veteran returning home, Vic fought his way back from despair (We Are Stronger). He can personally relate to the devastating toll that job stress and trauma takes. His new mission is to step in when he sees someone struggling and to train the community in suicide prevention.



Nick Cirillo

Shawn Stoneberg

Irreverent, cold, and highly effective, Nick is Redmond Quinn's favorite secret weapon. Nick's specialty is tracking down people and things that Redmond wants, without leaving a trace.



Karl Hoffmann

Clay Pool

Karl is proud to be highly ranked in Redmond Quinn's organization. He enjoys knowing that Quinn trusts him and is completely loyal to Quinn and the Clarity Way-- perhaps to a fault?



Chief Burnett

Fil Waters



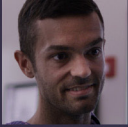
Janelle

Lilly Cooper



Justin

Justin Ulmer



Alex

Ben Murray



Joe

Micheal Zepeda



Dhustie

Dhustie Zervakos

Reflective Media Productions is a subsidiary of Reflective Life Ministries, a 501c3 nonprofit.
All donations are tax-deductible (EIN-26-3979164)
Contact Terry Weaver at terry@reflectivemedia.org for sponsorship information.

BREAKING STRONGHOLDS

BUDGET BREAKDOWN BREAKING STRONGHOLDS PER EPISODE \$50,000

When a teen's plan to end his life is interrupted by a mysterious stranger, he finds an unlikely mentor and uncovers the dark secret motives of the town's newest celebrity.

The Next Generation suffers from a variety of issues like depression, broken families, social media pressures, misplaced identity, comparison, cyberbullying, suicidal thoughts, isolation, eating disorders, and more. Be part of helping the next generation overcome mental health issues by partnering with Reflective Media Productions in producing *Breaking Strongholds*. The budget per episode is...

DEVELOPMENT PHASE - \$5,000

- Interviewing
- Prepare Budget
- Character Development
- Equipment Updates
- Equipment Preps
- Researching
- Scriptwriting Episode
- Website Design
- Logline
- Script Advisors



PRE-PRODUCTION PHASE - \$9,000

- Storyboarding
- Crew Prep
- Characters Research
- Technical Support Selected
- Actor Meetings
- Location Scouting
- Professional Fees - Legal, Insurance
- Shot Lists
- Wardrobe Selections
- Website Design
- Fundraising
- Production Coordinating
- Performance Director Meetings
- Film Equipment - Upkeep
- Final Episode Script Edits

PRODUCTION PHASE- \$11,000

- Filming Director
- Performance Directing
- Camera Crew per scene
- Grip
- Director on set
- On set refreshments
- Posters, Flyers, Social Media, Promotional Ads, Newspaper Article
- Travel - Cast & Crew
- Performance Director
- Interns per scene
- Props
- Insurance per scene (as needed)

POST-PRODUCTION PHASE - \$20,000

- Episode Editing/Official Trailer \$8000
- Sound Editing \$4000
- Music Scoring \$4000
- Colorist \$4000

DISTRIBUTION - ADVERTISING/MARKETING - \$5000

Reflective Media Productions is a subsidiary of Reflective Life Ministries, a 501c3 nonprofit.
All donations are tax-deductible (EIN-26-3979164)
Contact Terry Weaver at terry@reflectivemedia.org for sponsorship information.

SPONSORSHIP OPPORTUNITIES

WHY SPONSOR: Unlike golf or gala event sponsorships, RMP Sponsorships continue for the life of the movie, streaming series, short film, and Public Service Announcement (PSA). All of our movies and series are on streaming platforms like Amazon Prime, PureFlix, Parables Network, and more. Think about it this way... One magazine ad can cost \$6000 per spot or a Sunday newspaper ad up to \$3000 for a weekend. Sponsoring a Breaking Strongholds episode lives on for years - The life of the film series.

PAST SPONSORSHIP SUCCESSES: The Spirit of Texas Bank is the Title Sponsor for our movie *We Are Stronger*, which was released on Amazon Prime, February 2018. In the second quarter alone, over 1.3 million minutes were watched by viewers across the country and that number continues to rise each quarter. As a result, the publicity exposure Spirit of Texas Bank receives continues to escalate. Again, this sponsorship or promotion is for years to come - The life of the movie.

WAYS YOU CAN GET INVOLVED: Join us in this collective effort to reach the brokenhearted. We are seeking both Corporate/Individual Sponsors and Monthly Partners. Both help us build a strong base to continue creating faith-based media content that makes a powerful impact for the Kingdom of God.

We offer five levels of Corporate/Individual Sponsorships. Each level offers a variety of ways we recognize each sponsor. All donations are tax deductible through Reflective Life Ministries.

FIVE BREAKING STRONGHOLDS EPISODE SPONSORSHIP LEVELS

EPISODE TITLE SPONSOR - \$25,000

- Corporate location placement or product placement within the episode
- Corporate name/logo displayed as “Episode Title Sponsor” at the beginning of the episode with a bumper
- Corporate name/logo listed in episode credits with a special “Thank You to our Episode Title Sponsor”
- Corporate name/logo added to advertising campaigns on a local, state, and national level
- Opportunities for employees to be “extras” within the episode
- Listed on promo materials, social media, press releases, website, episode trailer, etc.
- Promotional video announcing the Episode Title Sponsorship for social media and advertising purposes
- Tickets to the Red Carpet Premiere and recognized as Episode Title Sponsor from the stage

PLATINUM SPONSOR - \$10,000

- Corporate name/logo listed in the episode credits as “Platinum Sponsor”
- Corporate name/logo listed on the Breaking Strongholds website
- A variety of social media campaigns, press releases, and more with “Platinum Sponsor” listed
- Promotional video announcing the Platinum Sponsorship for social media and advertising purposes
- Invited to the Red Carpet Premiere and recognized as Platinum Sponsor on stage

GOLD SPONSOR - \$5000

- Corporate name/logo listed in the credits as “Gold Sponsor”
- Name/Corporation, logo, and website listed on the Breaking Strongholds website
- Corporate name listed as “Gold Sponsor” on a variety of press releases, news articles, etc.
- Promotional video announcing the Gold Sponsorship for social media and advertising purposes
- Invited to the Red Carpet Premiere and recognized as Gold Sponsor on a slide show

SILVER SPONSOR - \$2500

- Listed in credits as “Silver Sponsor”
- Name/Corporation listed on the series website

BRONZE SPONSOR - \$1000

- Listed in the credits as “Bronze Sponsor”
- Name/Corporation listed on the series website

RMP PAST PROJECT

WE ★ ARE

STRONGER

WWW.STRONGERMOMIE.COM

TITLE SPONSOR: SPIRIT OF TEXAS BANK

We Are Stronger is a faith-based movie exploring a veteran's battle with PTSD. As he struggles to recover from his injuries, reclaim his marriage, and fit back into the civilian world, Vic learns he can't do it by himself. *We Are Stronger* shines a light on the ripple effect post-traumatic stress and the hope and healing Christ provides.

In 2018, *We Are Stronger* was released in a limited number of theaters nationwide and received multiple film festival awards ranging from Best Feature Film to Best Lead Actress. Now, the film is available to watch on Amazon Prime, PureFlix, and Vimeo. In the first three months on Amazon Prime alone, *We Are Stronger* was viewed over 1.3 million minutes. Since the release two years ago, it is estimated through all streaming platforms combined along with DVD sales, *We Are Stronger* has been watched by at least 1,060,000 viewers (132,000,000 minutes) worldwide.

The success of *We Are Stronger* goes above and beyond what Reflective Media Productions anticipated. The testimonials of the lives touched by the message of hope, healing, and restoration continue to flow in on a regular basis. To view testimonials and more about *We Are Stronger* go to www.strongermovie.com.

TEEN SUICIDE PREVENTION VIDEO SERIES

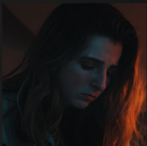
RMP produced a series of PSAs bringing awareness to the teen suicide epidemic plaguing our nation. In partnership with the nonprofit organization, Cassidy Joined for Hope, each episode targets schools and youth groups, encouraging them to show the series to their students. The purpose is to not only bring awareness to suicidal ideation but also promotes peer-to-peer conversations. This series is currently recognized by a number of school officials, teachers, organizations, counselors, and youth groups. The goal is to offer curriculum-based resources to be used as unit studies in the classroom, after school programs, and youth small groups. For more go to www.reflectivemedia.org.



Episode 1 - #RuOK - Sponsors: Spirit of Texas Bank and Cassidy Joined for Hope



Episode 2 - #Talk2Me - Sponsors: Magnolia Rotary Club and Cassidy Joined for Hope



Episode 3 - #Share2Care - Sponsors: Magnolia Rotary Club and Cassidy Joined for Hope

RMP has a number of other film projects like the feature film *First Love*, *Behind the Veil*, and a variety of PSAs focused on spiritual and mental issues people face.



MONTHLY GIVING

RLM offers a way for those interested in supporting on a regular basis to join our Monthly Giving Team. The goal and prayer is for others to come alongside and help build a solid base of regular giving for the ministry. **The monthly expenses range between \$12,000 and \$15,000.** We offer five levels of giving that range from \$5 - \$100. Each level offers a different set of perks and encouragements along the way.

MONTHLY GIVING LEVELS

\$5 A MONTH	\$10 A MONTH	\$25 A MONTH	\$50 A MONTH	\$100 A MONTH
-----------------------	------------------------	------------------------	------------------------	-------------------------

Be an inspiration of hope and healing by joining the RMP Monthly Giving Team. We are a nonprofit that relies on the support from people like you. If everyone reading this message gives at least \$10 a month we can continue creating impactful Christ-centered media content for years to come.

CONTRIBUTE SHARES

RLM has a brokerage account available for those who would like to donate stock shares to the ministry. For those interested in finding out more about this please contact Terry Weaver at terry@reflectivemedia.org.

JOIN THE RMP MONTHLY GIVING TEAM

To join our Monthly Giving Team, visit
www.reflectivemedia.org/monthly-donation.
All donations are tax-deductible.



Reflective Media Productions is a subsidiary of Reflective Life Ministries, a 501c3 nonprofit.
All donations are tax-deductible (EIN-26-3979164)
Contact Terry Weaver at terry@reflectivemedia.org for sponsorship information.



REFLECTIVE MEDIA PRODUCTIONS

WWW.REFLECTIVEMEDIA.ORG

LEADERSHIP TEAM

Reflective Media Productions produces high-quality faith-based media content promoting spiritual, emotional, and mental wellness through the creation of films, series, follow-up curriculum, podcasts, and short-form videos. All of RMP's productions lead to a website called Stronger Alliance, a Christ-centered resource hub for veterans, first responders, suicide prevention, burn survivors, sex-trafficking, and more. Because of RPMs creative and unique way of sharing the gospel around the world they are now known as Media Missionaries.



CARLA MCDOUGAL

Founder & CEO

Author, speaker, and film producer, Carla McDougal, is the founder of Reflective Life Ministries, Reflective Media Productions, and the Stronger Alliance. Her true passion for her Lord and Savior, Jesus Christ, shines brightly, whether she is speaking or writing. Carla serves as the Executive Producer for the awarding faith-based film *We Are Stronger*, which released in 2017. Carla and her husband, Fred, live in the Houston area.



Terry Weaver

Director of Marketing and Development

Terry Weaver is a U.S. Navy Veteran who served as a combat Corpsman with the U.S. Marines. He earned a Bachelor of Business Administration from Texas A&M in 2011 and completed a Master's degree of Biblical Studies in 2020. He has authored three books, is the lead actor in *Breaking Strongholds* and recently joined the Reflective Media Productions leadership team. Terry is happily married. He and his wife Chelley have four children and live in a suburb of Houston Texas. His life mission is to inspire those he loves and the world through his faith, creativity, and writing.



ROBIN MURRAY

Production Director

Robin Murray is a wife, mom and writer from Magnolia, Texas. After teaching history at the secondary and college levels, she began scriptwriting plays for children, teens and women's ministries. She began writing for Reflective Life Ministries in 2009, and is currently lead writer for Reflective Media Productions.



JAKE ALLEN

Executive Director

Jake Allen is a husband, father and has lived in Montgomery, Texas for most of his life. He was the Communications Director of Faith Bible Church in the Woodlands for five years but left to start his own company in 2011. Jake has been a member of the RMP team since 2010 and has always worn many hats. He is currently part of the RMP Leadership team and handles the ministries video, graphic, and technical needs.

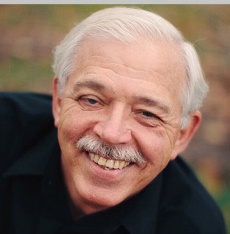
PERFORMANCE DIRECTORS



Christine Tonkin

Performance Director/Creative Team Member

Christine is a wife and mother of two who has always had a love for creative arts. With a passion for film and theater, she works to use both to reflect Jesus. Christine and her husband, Jeff, own a photography business and in recent years have been serving on film sets taking production photos. She has directed multiple theater productions and taught acting classes for many years. She is so excited to now be part of the Breaking Strongholds team!



Calvin Pearson

Performance Director/Creative Team Member

Calvin and his wife, Jan, have been married for more than 45 years. He has 46+ years of ministry experience including: the AD Players; pastoring in Texas and Michigan; and teaching at Dallas Seminary and Southwestern Seminary. After retiring from the pastoral staff of Crossroads Baptist he still serves as an adjunct professor for several seminaries. He views working with Reflective Media Productions as a retirement gift from the Lord.



ANGELA MYERS-SWEET

Performance Director/Creative Team Member

Angela is an artist, professional film & television actor with SAG-Aftra, RMP Performance Director and member of the RMP creative team. She also serves as the Marketing & Client Relations Director for Prazak Financial, Northwestern Mutual in The Woodlands. Her heart's desire is to collaborate, create and convey hope through various artistic mediums while encouraging others to fully embrace their gifts from the Lord.

CREATIVE TEAM

Carla McDougal | Robin Murray | Jake Allen | Terry Weaver
Christine Tonkin | Angela Myers-Sweet | Calvin Pearson
Ulises Larramendi | Bryce C Miller | Trenda Lynch | Dava Gordy

MEDIA MISSIONARIES

Reflective Media Productions' shares the gospel in unique and powerful ways through films, short videos, Public Service Announcements (PSAs), podcasts, TV Series, video educational series, and more. At the touch of a button, we can be around the world sharing the message of hope, healing, and restoration through Christ. Join our mission by sharing our media content with others!

HELP US. HELP OTHERS.

ABOUT REFLECTIVE MEDIA PRODUCTIONS

Reflective Media Productions is a subsidiary of Reflective Life Ministries, a 501c3 nonprofit organization (EIN- 26-3979164). In 2008, Carla McDougal founded Reflective Life Ministries and now serves as the Executive Director under the RLM Board of Directors. In 2015, Reflective Media Productions, LLC was formed under the guidelines and direction of the RLM Board of Directors. For more information on all Reflective Life Ministries subsidiaries visit their websites:

www.reflectivelifeministries.org

www.reflectivemedia.org

www.strongeralliance.com

www.breakingstrongholds.com

CHECKS CAN BE
MADE PAYABLE TO
REFLECTIVE LIFE MINISTRIES
6606 FM 1488 STE. 148-185
MAGNOLIA, TEXAS 77354

THANK YOU TO OUR TITLE SPONSORS



SPIRIT OF TEXAS
BANK

TEXANS HELPING TEXANS

 **TWFG**TM
INSURANCE

THE RIESER FAMILY FOUNDATION

A SPECIAL THANKS TO
ALL OUR EPISODE SPONSORS
FOR THEIR GENEROUS SUPPORT OF
BREAKING STRONGHOLDS

B R E A K I N G
STRONGHOLDS

WWW.BREAKINGSTRONGHOLDS.COM