

905 College St. Montgomery TX



HOME & BARN AS OF 2023
GOOGLE STREET VIEW, REMAINS
THE SAME TODAY IN 2024.

The Podraza House

- The Podraza House was originally built as a one-room board and batten home in Richards, probably in the early 1900s. Other rooms were added over the years. During World War II, Louis & Katie Podraza bought the house and rented it out for \$10 a month. In the late 1960s, the house was moved two miles west of Richards to a farm where it was occupied until the early 1980s by John Podraza. After sitting vacant 10 years, the house was purchased by Bleu & Dickey Beathard and moved 18 miles south to Montgomery.
- Since the house had to be cut in half and have the roof removed for the move, the restoration work had to follow extensive rebuilding. The house now serves as the Beathards' home.



We recently purchased the property located at 905 College St. originally known as The Podraza House. We currently live in Houston and will be officially moving to Montgomery at the conclusion of this school year. During that time, we'd like to do a few renovations to the property located within the Historic District. We know a little history on this home. It was originally built in 1900 and has been moved 2 times and undergone numerous renovations over time, adding a back section & 2nd floor (2008), then the most recently a kitchen addition (2018). The previous homeowners made many efforts to add character back into the home in the interior renovations included period appropriate doors, trim and wall coverings. Inside the flow from old to new sections is seamless. We'd like to bring that same character to the exterior. The original one room farmhouse would have been simpler in style. The home relocated to Montgomery in the late 90's, where it has remained. We'd like to take it to a specific period to ground it to the historic district. The original home was built in 1900, around the time Montgomery was planting & growing its own roots. This period of time home styles were transitioning from Greek Revival (Magnolia House) to Victorian (Homewood). 905 College St. started off as a farmhouse, and today exists on a larger parcel of land in town with a barn. We'd like to keep true to its farmhouse roots, but bring it towards the architecture of the beautiful homes within the historic district by committing 905 College to the style of Folk Victorian. This tyle bridges the gap between the vernacular homes often built for function out on the farms vs. the in town, street front homes built for function and beauty. Like many owners before us, we hope to leave our fingerprints on this home, and the great historic district it lines within and share with you our vision for the farmhouse.



Current Elevation



Proposed Elevation



Nantucket Dormer

Nantucket Dormer

We would like to gain space in the 2 upstairs front bedrooms by altering the front elevation. We would do this by capturing the space between the current 2 gable dormers, by adding shed style dormers, creating a Nantucket style dormer look across the front.

Reason for choosing this style, is to try to stay true to the current elevation and roof line by working with the existing gable dormers. Keeping those 2 peaks ensures the current elevation style of the farmhouse. The windows would match the current windows in style but scaled down in size to properly fit the narrower space.

905 College St. Montgomery TX



Current front porch

Porch Baluster

We would like to add more character back into the home and solidify the Folk Victoria style by replacing the current porch balusters which are simpler in style to a flat sawn style. Flat sawn is from the Victorian area seen in many Fok Victorian & Eastlake Victorian style homes.



Proposed flat sawn balusters



1890's Folk Victorian Porch Examples



Current front door

Front Doors & Steps

We have purchased this set of 100yr old, merchant doors that we'd like to replace the current single front door. The current door leans more toward an Arts & Crafts style French door. The double doors would be more in line with our overall goal of a Folk Victoria style home.

We'd also like to center the steps in front of the doors.



Proposed front doors

905 College St. Montgomery TX



Expert Pick

SW 6244

Naval

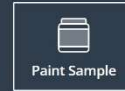
FULL DETAILS ▾

This deep blue, with its cool gray-green undertone, brings a meditative serenity to your space. Perfect for your study or office.

Get this color in a:



Color Sample



Paint Sample



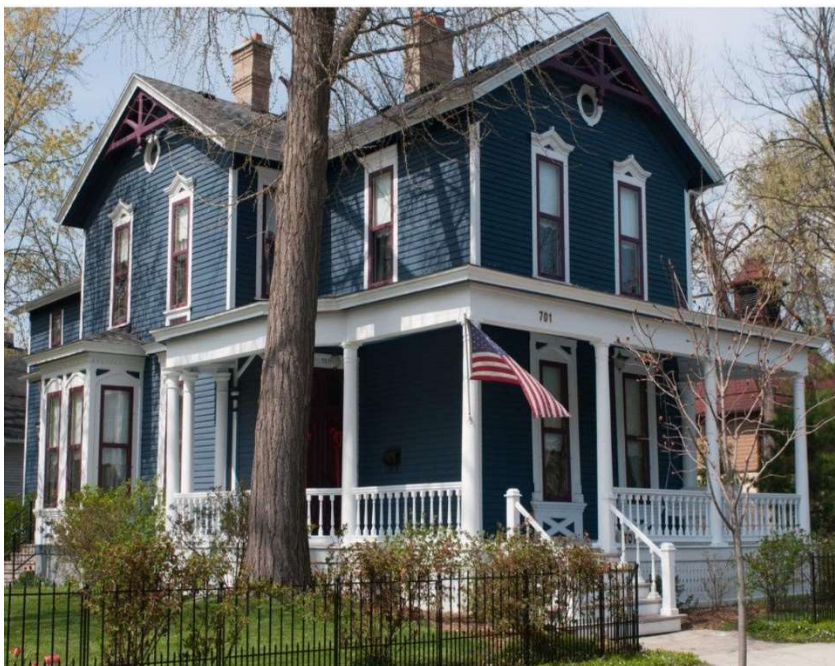
Interior Paint



Exterior Paint



Sherwin Williams Naval Exterior



Example of a historic Victorian paint in a navy tone

Exterior Paint Color

Our current Houston house, pictured top left, is painted SW Naval with white trim. We'd like to use this color scheme again on the Montgomery home & barn. Benjamin Moor has a similar navy in their historic paint collection called Hail Navy. We are not against using the deemed historic navy, but have direct experience with the SW Naval, therefore it's our preference.



Final proposed elevation



Aerial view of property for fencing