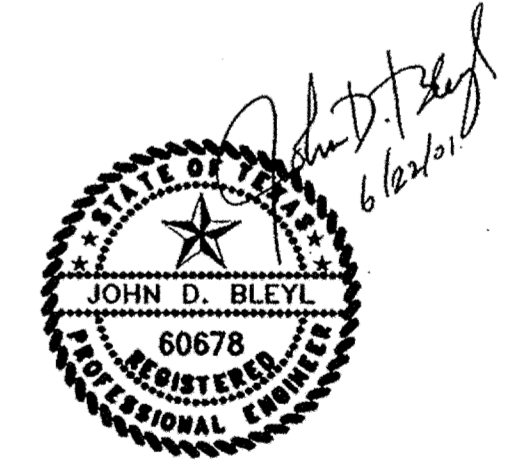
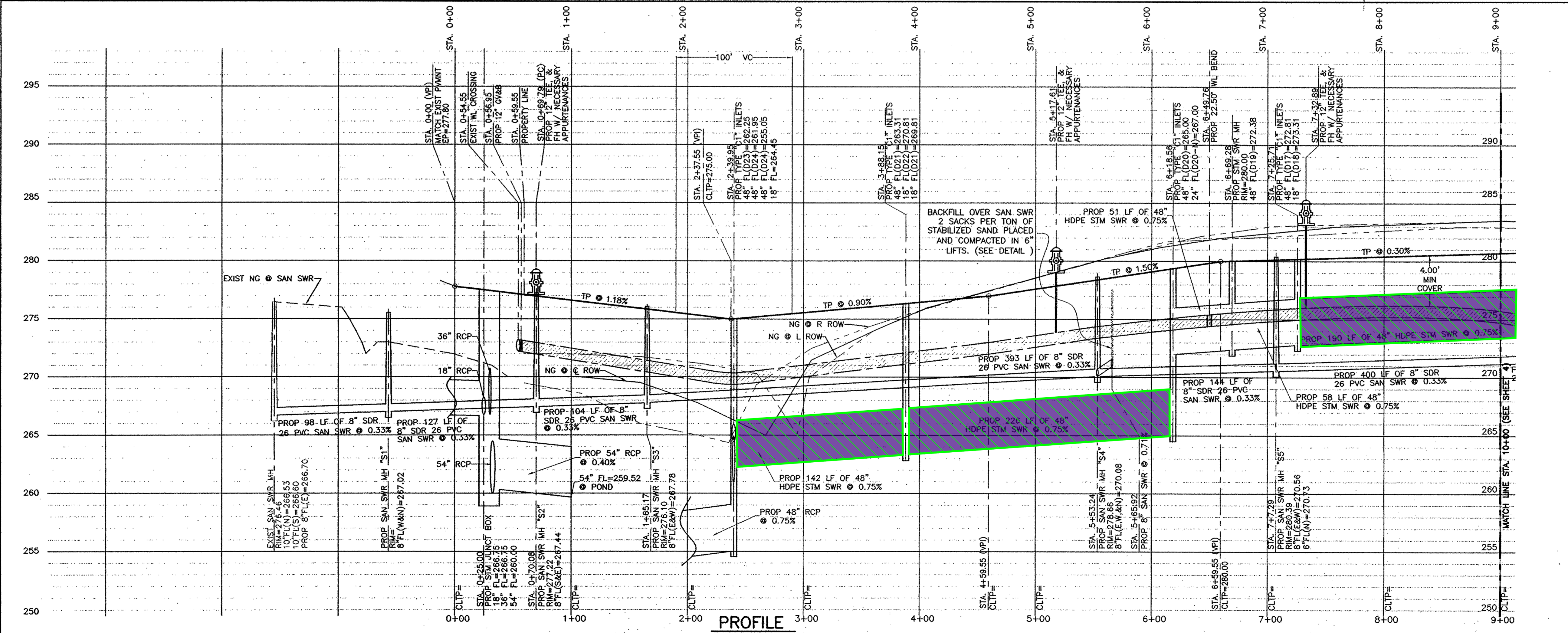


LEGEND:

FF - FINISH FLOOR
 TW - TOP OF WALK
 TC - TOP OF CURB
 TP - TOP OF PAVEMENT
 FL - FLOW LINE
 TG - TOP OF GRATE
 MEP - MATCH EXISTING PAVEMENT
 I = 11.80 IN/HR (100 YEAR STORM EVENT)
 TC = 10 MINUTES

➔ DIRECTION OF TRAFFIC

- DRAWING NOTES:**
- REVISIONS TO THESE ENGINEERING PLANS MUST BE AUTHORIZED BY BLEYL & ASSOCIATES PRIOR TO CONSTRUCTION.
 - THE CONTRACTOR SHALL:
 A.) NOTIFY BLEYL & ASSOCIATES AND THE MONTGOMERY COUNTY ENGINEER PRIOR TO CONSTRUCTION.
 - FLOOD PLAIN: THIS PROJECT LIES WITHIN ZONE "X" IN ACCORDANCE WITH FEMA MAP PANEL NO. 189, COMMUNITY MAP PANEL NO. 48339C0189 F, CONROE, MONTGOMERY COUNTY, TEXAS EFFECTIVE DATE DECEMBER, 19, 1996.
 - ELEVATIONS ARE BASED UPON F.I.R.M. BENCHMARK RM 140, ELEV.=242.71.
 - HYDROMULCH ALL DISTURBED AREAS.



REVISION					
REV.	DATE	BY	CHK	APP	COMMENTS
0	06/21/01	LPF			ISSUED FOR APPROVAL

B & A Bleyl & Associates
 Project Engineering & Management

300 W. DAVIS SUITE 535
 CONROE, TEXAS 77301
 936-441-7833 PHONE
 936-760-3833 FAX

PLAN & PROFILE
 FLAGSHIP BOULEVARD
 STA. 0+00 - 9+00
 MONTGOMERY TRACE CENTER
 A 38.229 ACRE TRACT OF LAND
 IN THE JOHN CORNER SURVEY, A-8
 MONTGOMERY COUNTY, TEXAS

SCALE: 1"=50' HORIZ.; 1"=5' VERT.
 DATE: JUNE, 2001
 DRAWN BY: LANCE FERRY
 PROJECT MANAGER: JOHN D. GERDES, E.I.T.

PREPARED FOR:
 ROBERT EASLEY
 1450 CAMPBELL
 HOUSTON, TX 70555
 (281) 356-7934

JOB NO. 1220 SHEET 9 OF 14

LEGEND

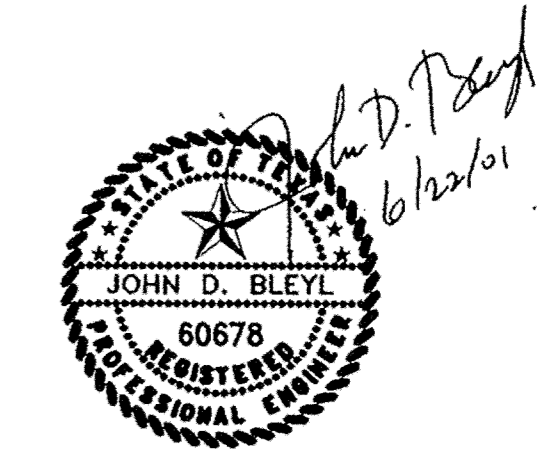
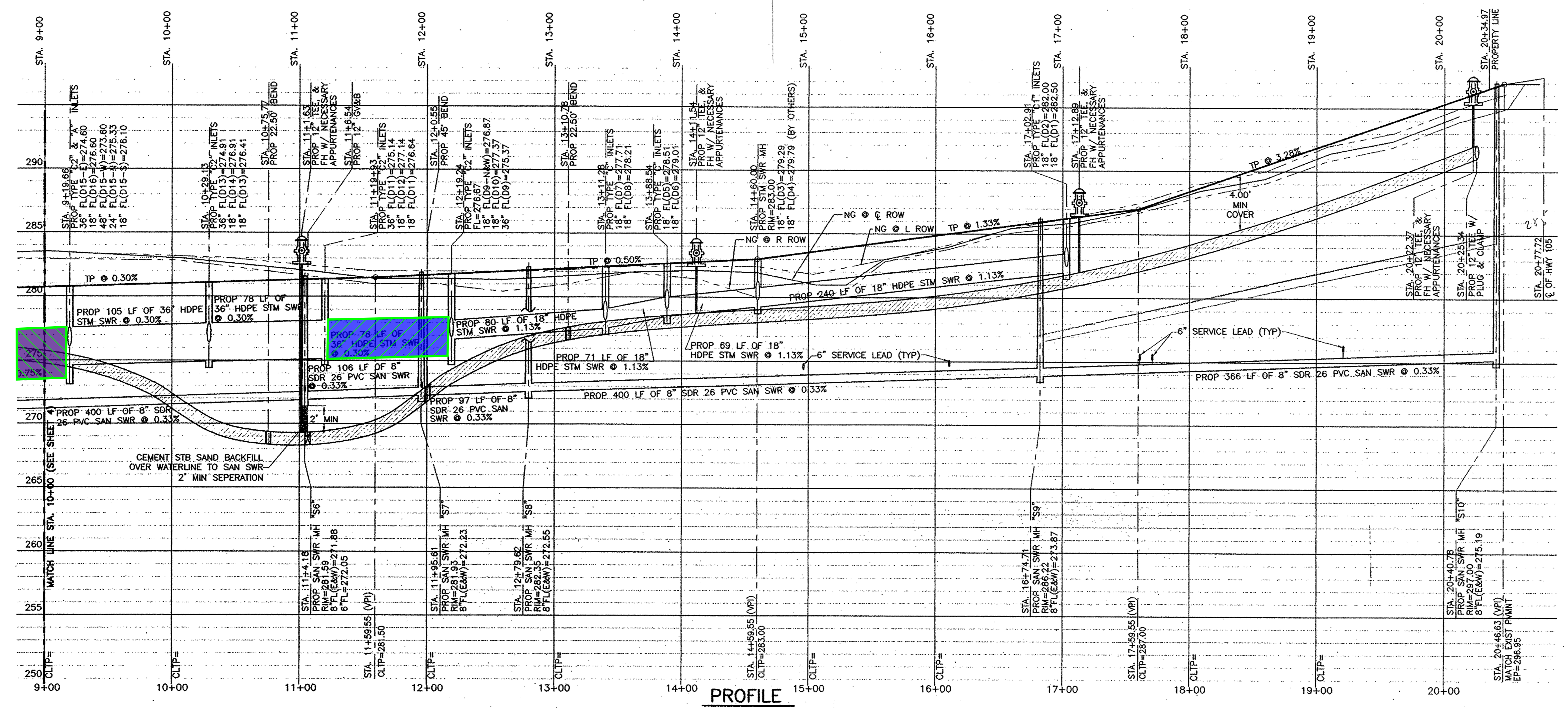
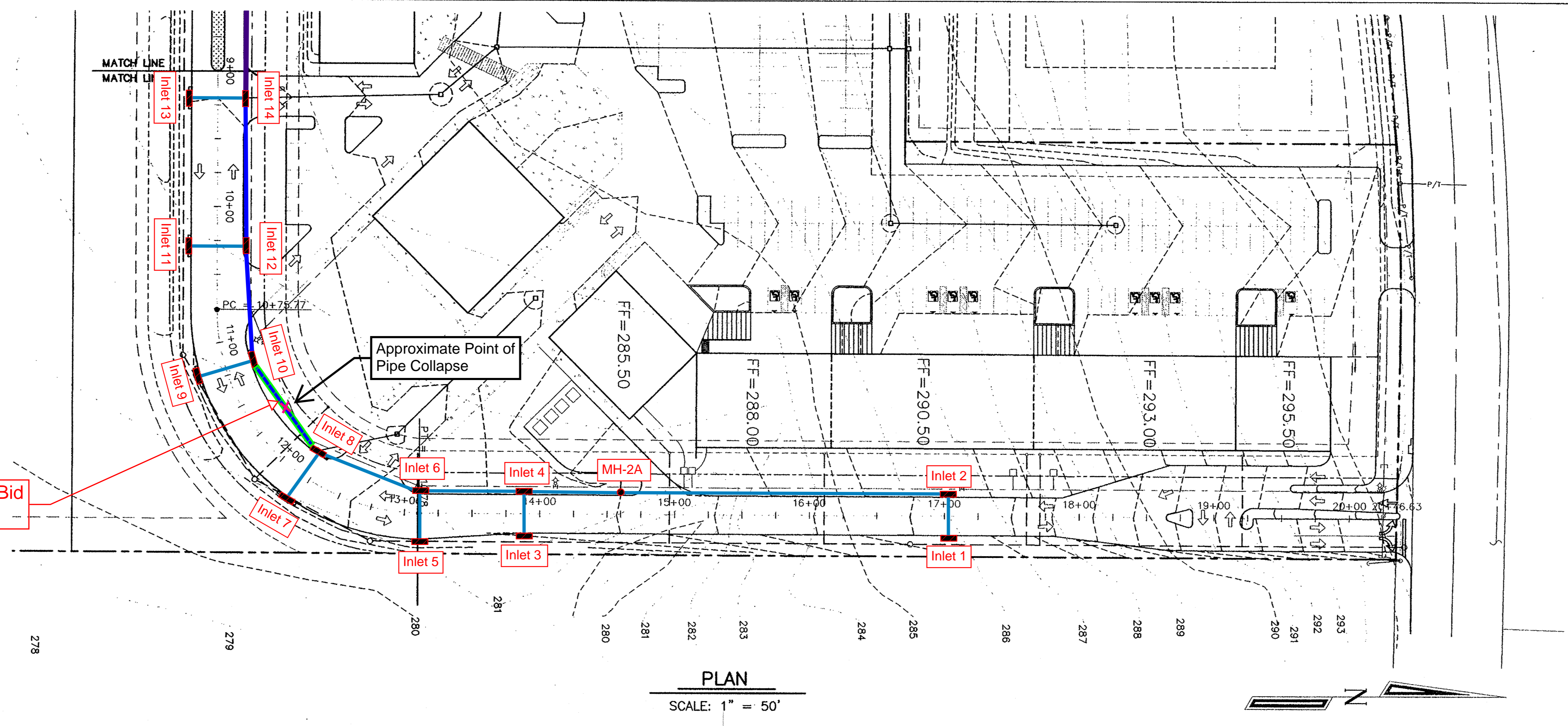
- 18" HDPE
- 36" HDPE
- 48" HDPE
- 18" RCP Replacement
- 36" RCP Replacement
- 48" RCP Replacement
- Collapse Location
- Storm Sewer Inlet
- Storm Sewer Manhole

LEGEND:

- FF - FINISH FLOOR
- TW - TOP OF WALK
- TC - TOP OF CURB
- TP - TOP OF PAVEMENT
- FL - FLOW LINE
- TG - TOP OF GRATE
- MEP - MATCH EXISTING PAVEMENT
- I = 11.80 IN/HR (100 YEAR STORM EVENT)
- TC = 10 MINUTES

DIRECTION OF TRAFFIC

- DRAWING NOTES:**
- REVISIONS TO THESE ENGINEERING PLANS MUST BE AUTHORIZED BY BLEYL & ASSOCIATES PRIOR TO CONSTRUCTION.
 - THE CONTRACTOR SHALL:
 - NOTIFY BLEYL & ASSOCIATES AND THE MONTGOMERY COUNTY ENGINEER PRIOR TO CONSTRUCTION.
 - FLOOD PLAIN: THIS PROJECT LIES WITHIN ZONE "X" IN ACCORDANCE WITH FEMA MAP PANEL NO. 189, COMMUNITY MAP PANEL NO. 48339C0189 F. CONROE, MONTGOMERY COUNTY, TEXAS EFFECTIVE DATE DECEMBER, 19, 1996.
 - ELEVATIONS ARE BASED UPON F.I.R.M. BENCHMARK RM 140, ELEV.=242.71.
 - HYDROMULCH ALL DISTURBED AREAS.



REVISION					
REV.	DATE	BY	CHK	APP	COMMENTS
0	06/21/01	LPF			ISSUED FOR APPROVAL

Bleyl & Associates
Project Engineering & Management

300 W. DAVIS SUITE 635
CONROE, TEXAS 77301
936-441-7833 PHONE
936-760-3033 FAX

PLAN & PROFILE
FLAGSHIP BOULEVARD
STA. 9+00 - 20+46.63
MONTGOMERY TRACE CENTER
A 38.229 ACRE TRACT OF LAND
IN THE JOHN CORNER SURVEY, A-8
MONTGOMERY COUNTY, TEXAS

SCALE: 1"=50' HORZ; 1"=5' VERT.
DATE: JUNE, 2001
DRAWN BY: LANCE FERRY
PROJECT MANAGER: JOHN D. GERDES, E.I.T.

PREPARED FOR:
ROBERT EASLEY
1450 CAMPBELL
HOUSTON, TX 70555
(281) 356-7934

JOB NO. 1220 SHEET 10 OF 14