

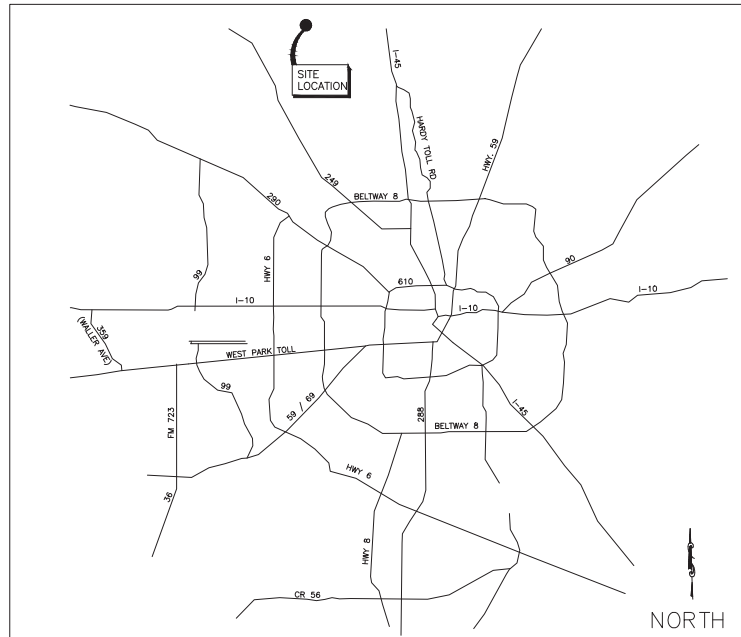
MONTGOMERY BEND

MONUMENT IMPROVEMENTS

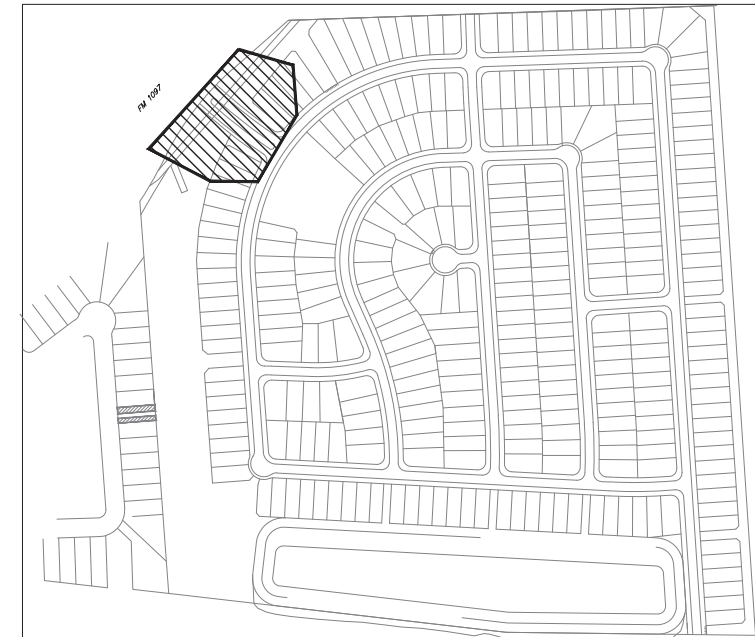
308 and 309 Hazel Rose Trail
Montgomery, Texas 77356

a project developed for
Pulte Homes of Texas

MONTGOMERY COUNTY



MONTGOMERY, TEXAS



by

KGA DEFOREST DESIGN, LLC
LANDSCAPE ARCHITECTURE
24275 Katy Freeway Suite 800 Katy Texas 77494
Phone 281.646.1802 Fax 281.646.1841

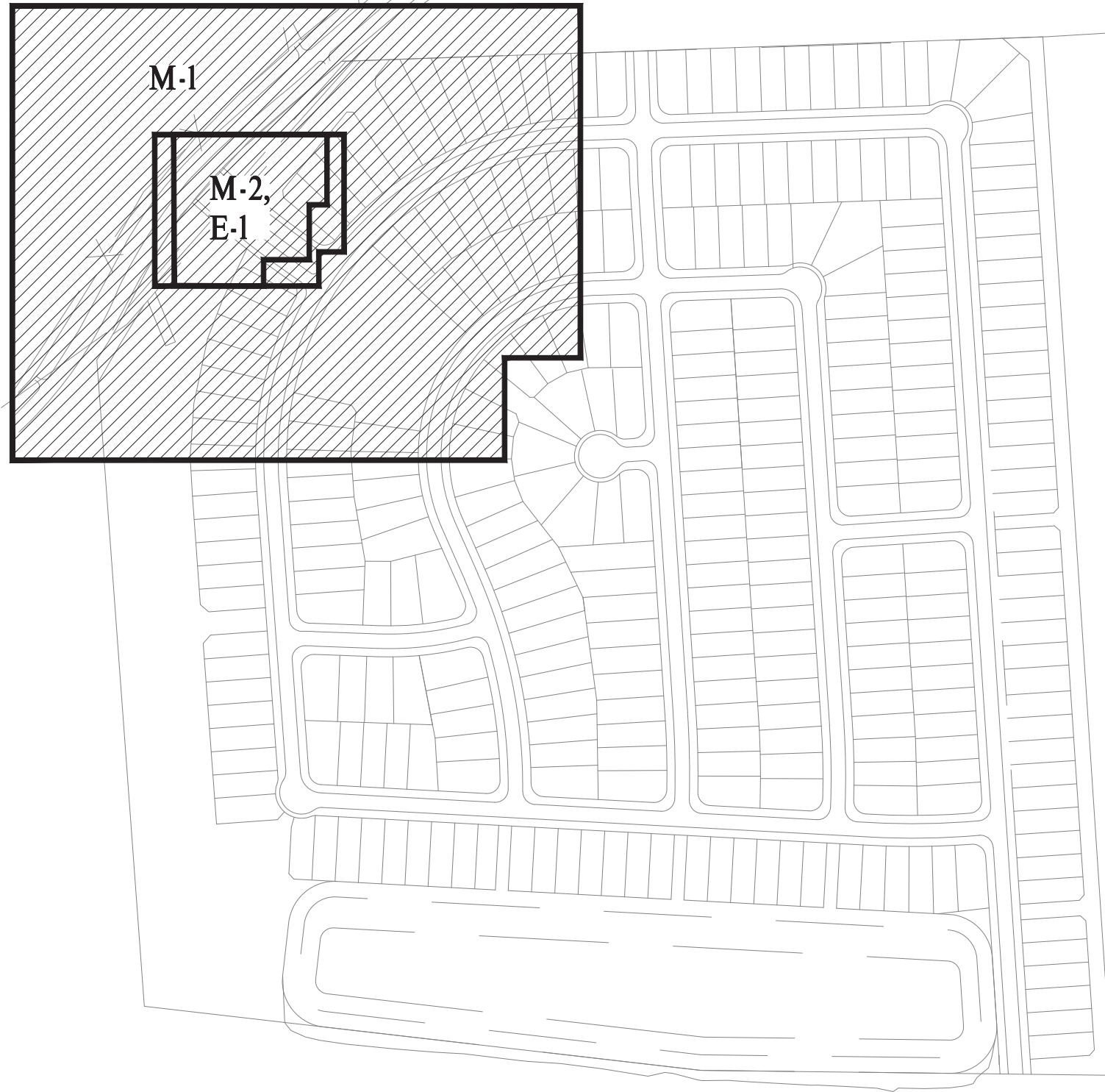


11/30/2023
For regulatory approval, permitting or construction.

Issue for Construction
11/30/2023

Sheet No.	Description
R-1	Reference Plan
M-0	Monument General Notes
M-1	Overall Monument Plan
M-2	Monument Layout Plan
M-3	Monument Details
M-4	Monument Det. & Mat. Sch.
E-1	Electrical Plan
Plat	Montgomery Bend
S-1 thru S-7	Structural Sheets

SITE REFERENCE MAP



KGADeForest
 3625 HAY HENWAY STATE 302
 6476 TRUSS ZONE
 281-648-1802 281-648-1844
 PHONE FAX

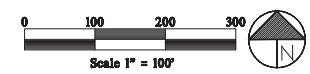


11/30/2023
 For regulatory approval, permitting or construction.

**MONTGOMERY BEND
 MONUMENT IMPROVEMENTS**
 Pulte Homes of Texas
 Montgomery County, TX

**Reference
 Plan**

Date: 11/30/2023
 Scale: 1"=100'-0"
 Job No: 129-22-64
 Revised:



R-1

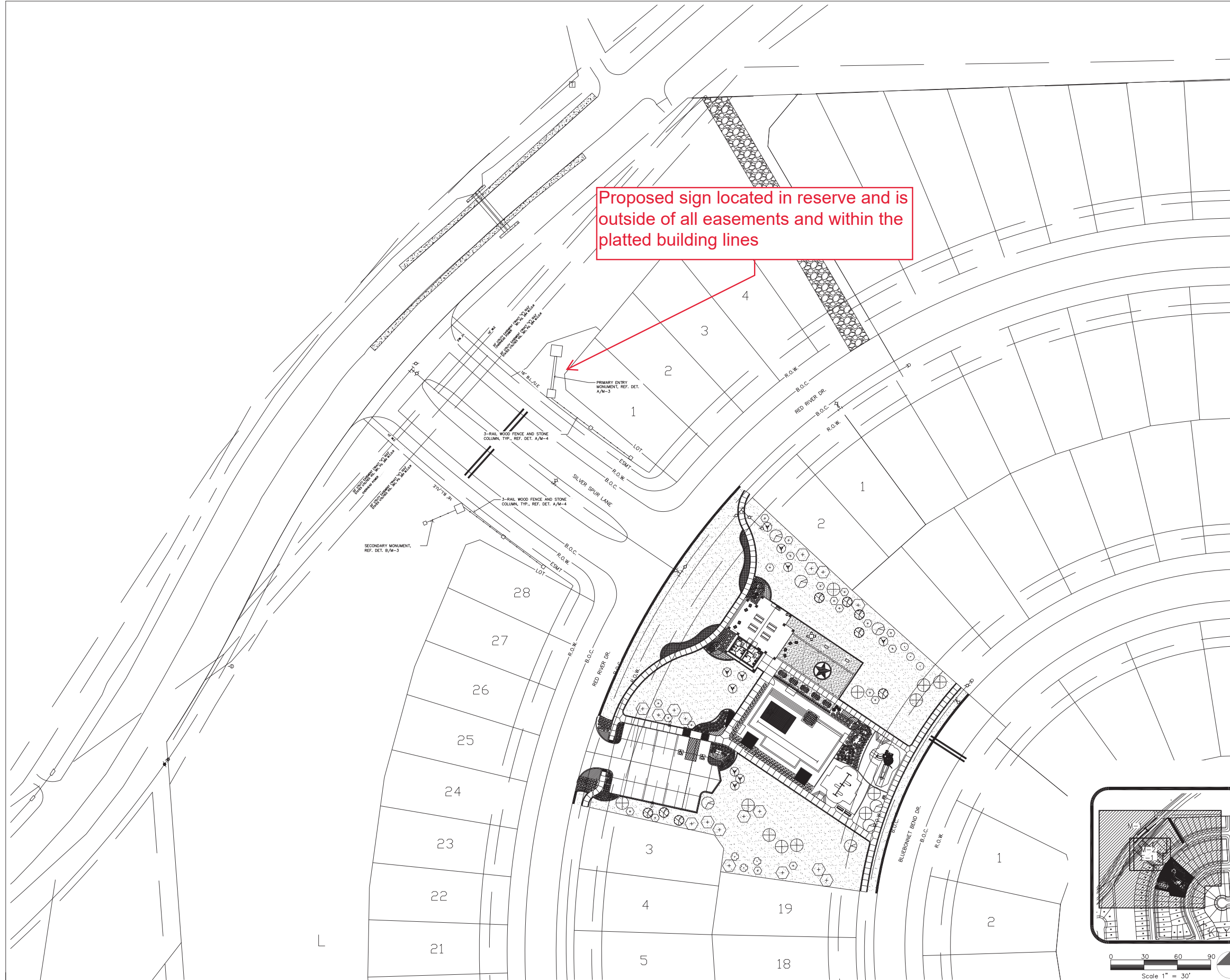


KGA DeForest
Landscape Architecture
24276 KATY FREEWAY SUITE 300
KATY, TEXAS 77494
281.848.1802 281.848.1841
PHONE FAX

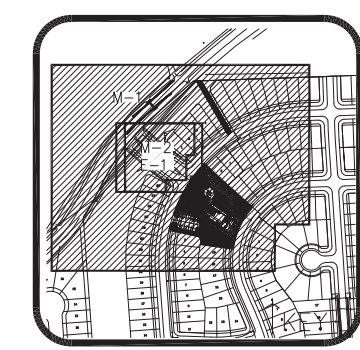


Stephanie Lee
02/18/2024
For regulatory approval, permitting or construction.

Proposed sign located in reserve and is outside of all easements and within the platted building lines

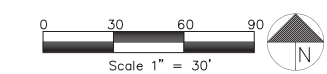


MONTGOMERY BEND
MONUMENT IMPROVEMENTS
Pulte Homes of Texas
Montgomery County, TX



Overall Monument Plan

Date: 02/18/2024
Scale: 1"=30'-0"
Job No.: 129-22-64
Revised:



M-1



KGA DeForest
 Landscape Architecture
 24276 KATY FREEWAY SUITE 300
 KATY, TEXAS 77494
 281.648.1602 281.648.1641
 PHONE FAX



Stephanie Lee
 02/18/2024

"For regulatory approval,
 permitting or construction."

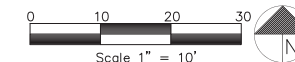
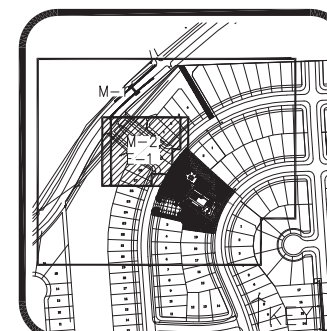
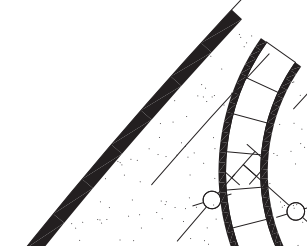
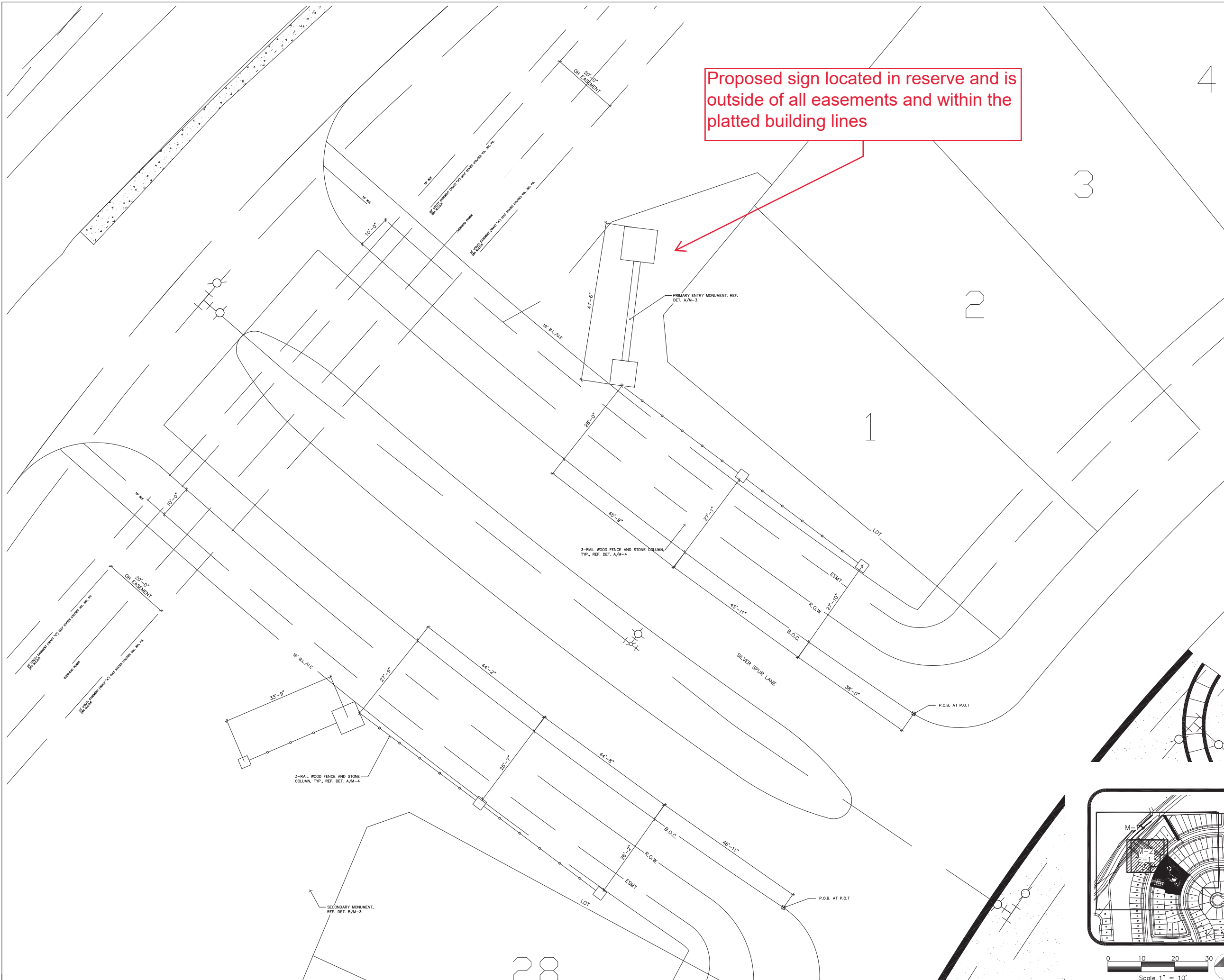
**MONTGOMERY BEND
 MONUMENT IMPROVEMENTS**
 Pulte Homes of Texas
 Montgomery County, TX

Monument
 Layout

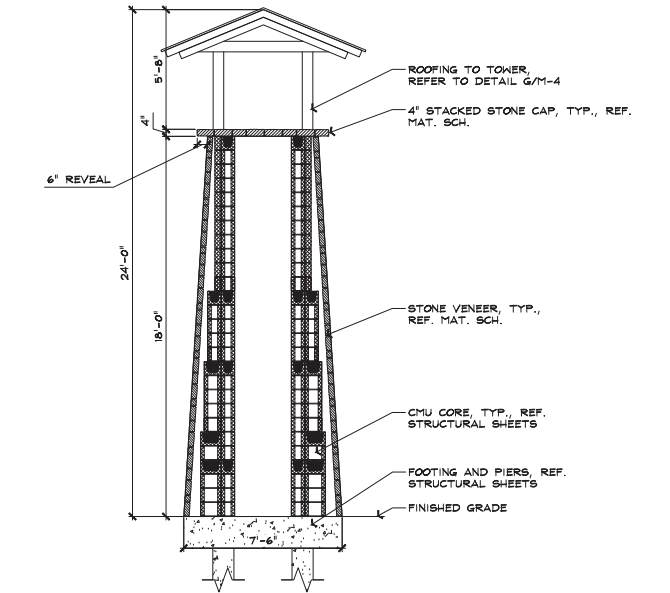
Date: 02/18/2024
 Scale: 1" = 10'-0"
 Job No.: 129-22-64
 Revised:

M-2

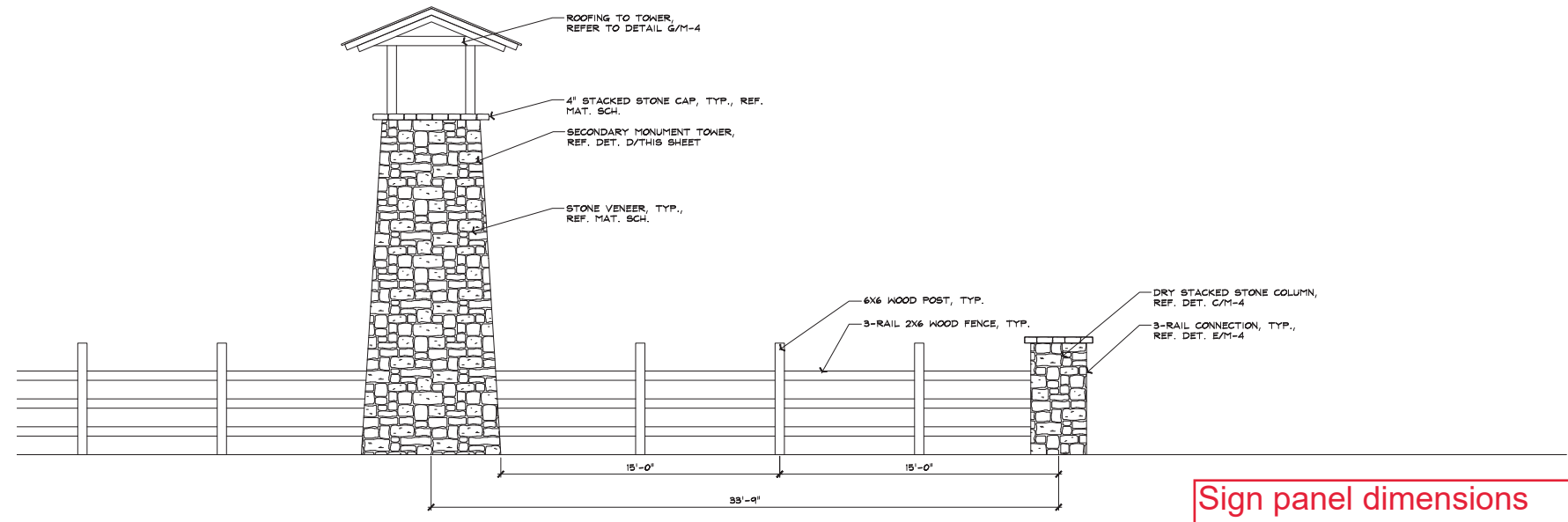
Proposed sign located in reserve and is outside of all easements and within the platted building lines



**MONTGOMERY BEND
 MONUMENT IMPROVEMENTS**
 Pulte Homes of Texas
 Montgomery County, TX

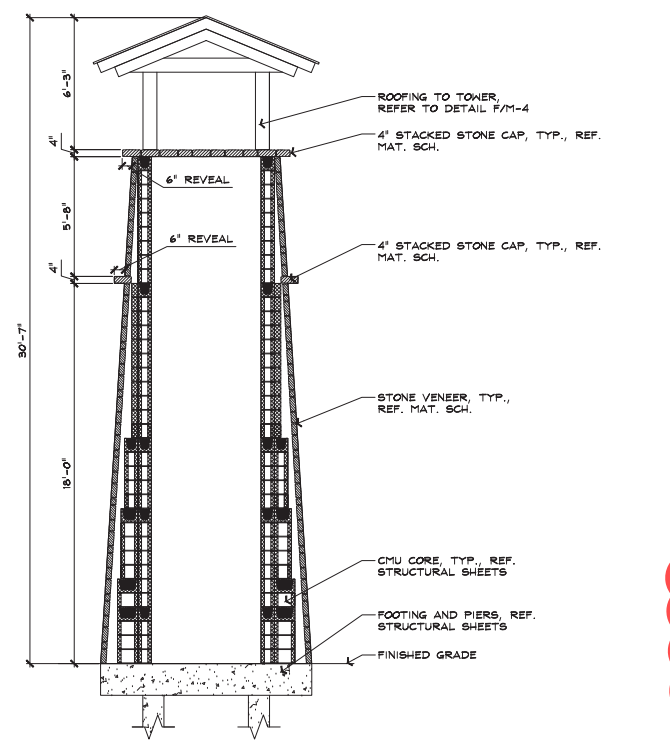


D SECONDARY MONUMENT TOWER SECTION SCALE: NTS

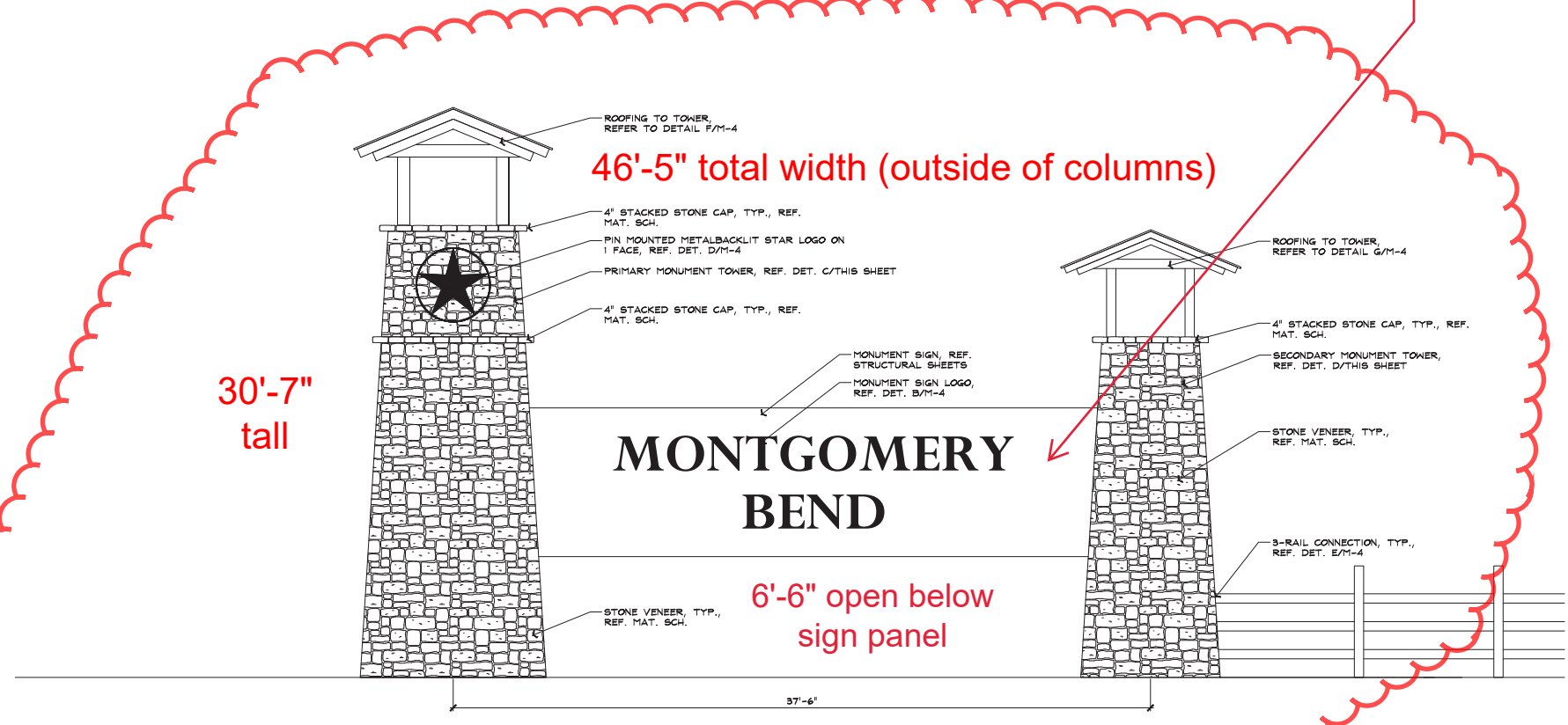


B SECONDARY ENTRY MONUMENT ELEVATION

Sign panel dimensions approx. 30'x8' made of steel with raised back-lit letters



C PRIMARY MONUMENT TOWER SECTION SCALE: NTS

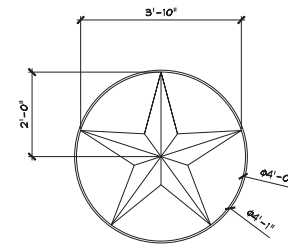


A PRIMARY ENTRY MONUMENT ELEVATION SCALE: NTS

Monument Details

Date:	11/30/2023
Scale:	AS SHOWN
Job No:	129-22-64
Revised:	

MATERIAL SCHEDULE					
QTY	ITEM	MANUFACTURE / LOCAL REPRESENTATIVE	MODEL	COLOR / COMMENTS	INSTALLATION
	FULL-DEPTH STONE VENEER	ALAMO STONE ALEX BAILEY (281) 723-4648	TUSCAN CREAM CHOP		INSTALL PER MANUFACTURER'S RECOMMENDATIONS, PROVIDE MOCK UP FOR L.A. APPROVAL PRIOR TO INSTALLATION.
	TOWER ROOF FRAMING & JOIST	CONTRACTOR TO USE PREFERRED MANUFACTURER	WOOD	ROUGH CUT DOUGLAS FIR	INSTALL PER MANUFACTURER'S RECOMMENDATIONS, PROVIDE MOCK UP FOR L.A. APPROVAL PRIOR TO INSTALLATION.
	3-RAIL FENCING	CONTRACTOR TO USE PREFERRED MANUFACTURER	WOOD	ROUGH CEDAR	INSTALL PER MANUFACTURER'S RECOMMENDATIONS, PROVIDE MOCK UP FOR L.A. APPROVAL PRIOR TO INSTALLATION.
	STANDING BEAM ROOF	MCELROY METAL WWW.MCELROYMETAL.COM (800) 562-3576	METAL	MANSARD BROWN	INSTALL PER MANUFACTURER'S RECOMMENDATIONS, PROVIDE MOCK UP FOR L.A. APPROVAL PRIOR TO INSTALLATION.
	ALUMINUM LETTERING, LOGOS, PLANTER, ETC.	RS INDUSTRIAL LAMAR WILKINSON (281) 513-4748	1/2" ALUMINUM	TNEMEC FAUX CORE-TEN FINISH TBD	INSTALL PER MANUFACTURER'S RECOMMENDATIONS, PROVIDE MOCK UP FOR L.A. APPROVAL PRIOR TO INSTALLATION. PROVIDE ALUMINUM MOUNTING TABS FOR LETTERING WITH STEEL MOUNTING HARDWARE, 2 TO 3 PER LETTER, DRILL IN TO WALL CORE AND SECURE WITH EPOXY. LIGHTING EFFECTS FOR LETTERING/LOGO TO BE LED TUBING WITH REMOVABLE LEXAN BACKING OR APPROVED EQUAL. PROVIDE SUBMITALS FOR REVIEW PRIOR TO ORDERING.



D BACKLIT STAR LOGO SCALE: NTS

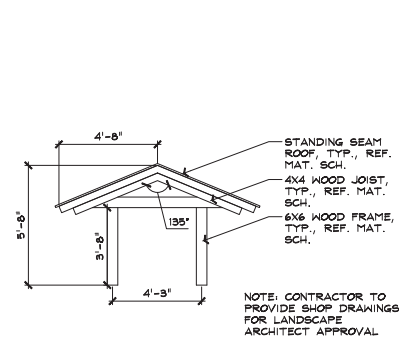


KGADeForest
SUSTAINABLE FORESTRY
SINCE 1988
2016-2017
FSC C010482
PHONE 281-462-1234 FAX 281-462-1234

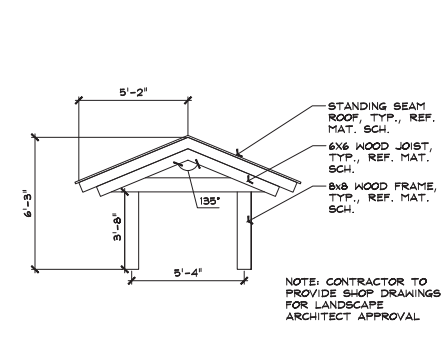


11/30/2023

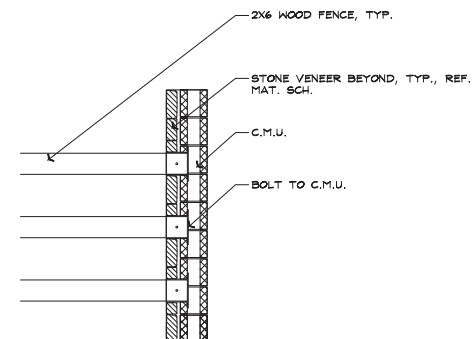
"For regulatory approval, permitting or construction."



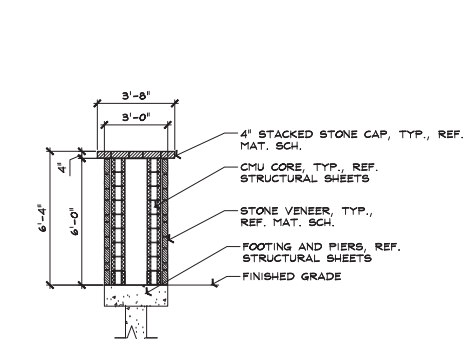
G SECONDARY MONUMENT TOWER ROOF SCALE: NTS



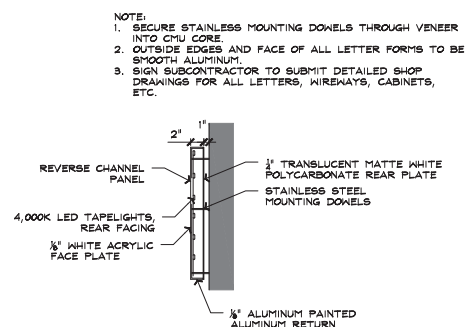
F PRIMARY MONUMENT TOWER ROOF SCALE: NTS



E 3-RAIL TYPICAL CONNECTION SCALE: NTS



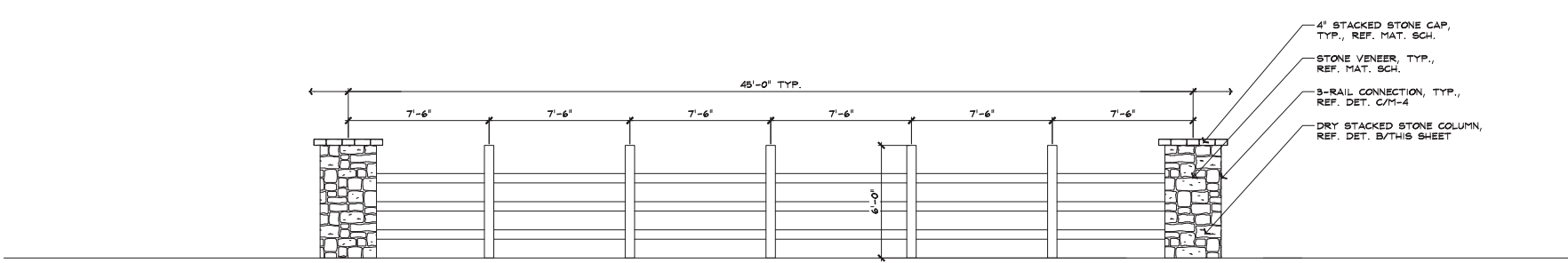
C DRY STACKED STONE COLUMN SECTION SCALE: NTS



B MONUMENT SIGN LOGO & REVERSE CHANNEL DETAIL SCALE: NTS



NOTE:
1. FONT IS PERPETUA IN BOLD



A 3-RAIL FENCE AND DRY STACKED STONE COLUMN ELEVATION (TYPICAL) SCALE: NTS

**MONTGOMERY BEND
MONUMENT IMPROVEMENTS**
Pulte Homes of Texas
Montgomery County, TX

Monument Det. & Mat. Sch.

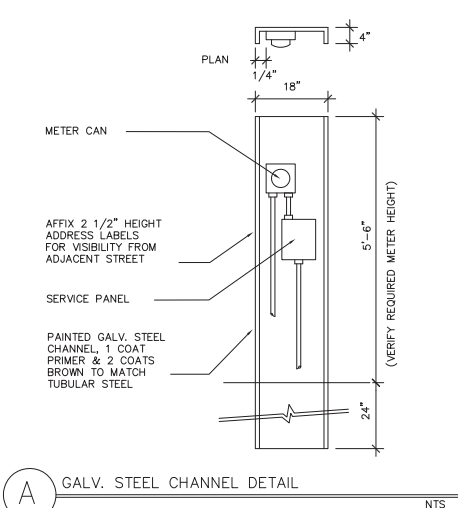
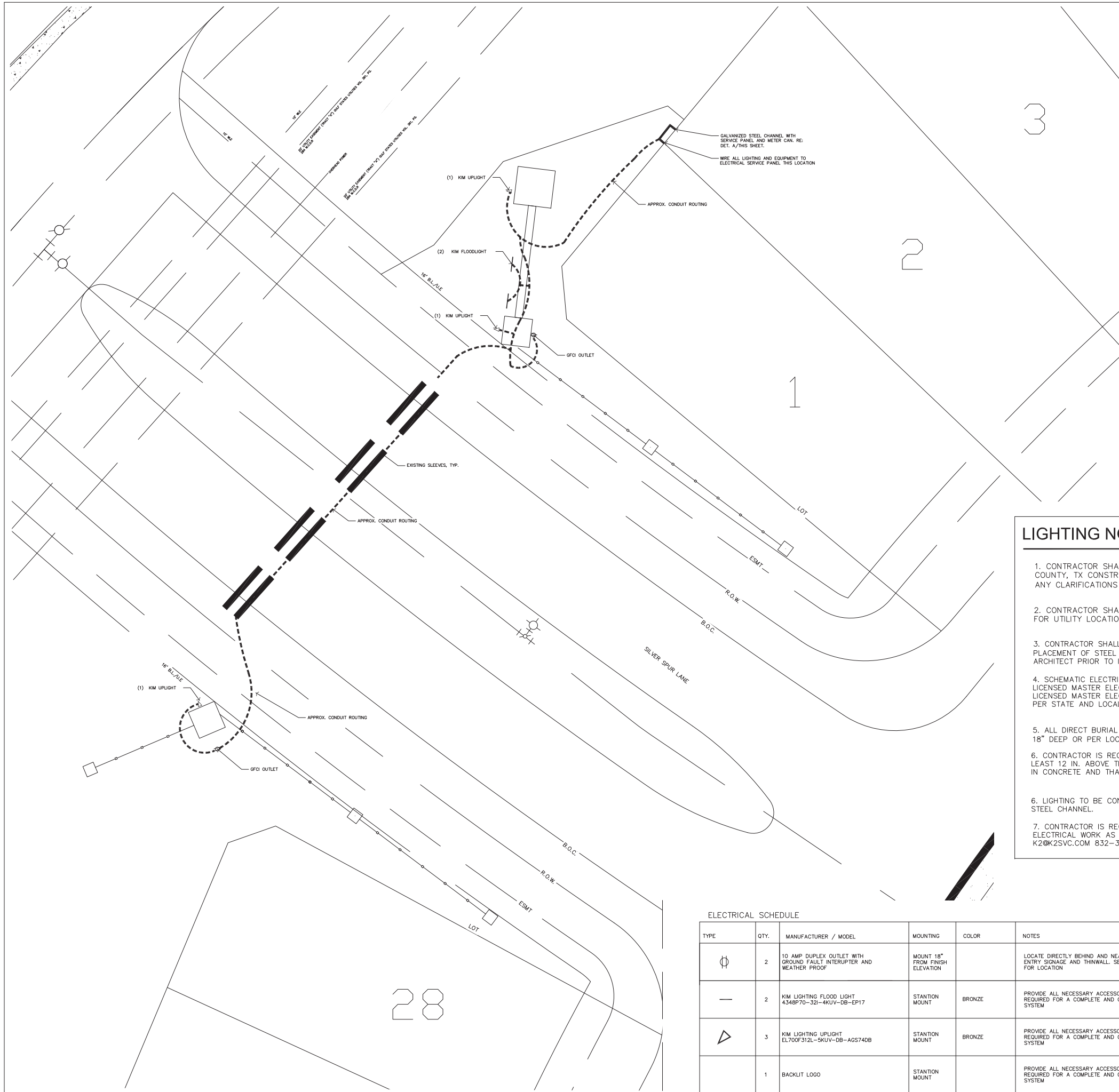
Date: 11/30/2023
Scale: AS SHOWN
Job No: 129-22-64
Revised:



KGADeForest
Landscape Architecture
24276 KATY FREEWAY SUITE 300
KATY, TEXAS 77494
281.648.1602 281.648.1641
PHONE FAX

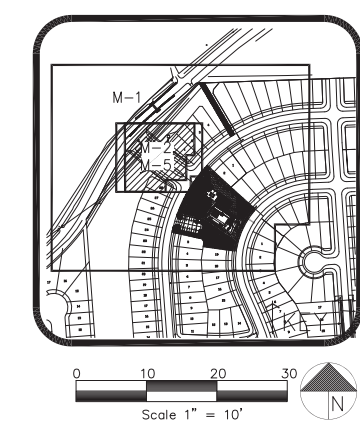


Stephanie Lee
02/18/2024
For regulatory approval, permitting or construction.



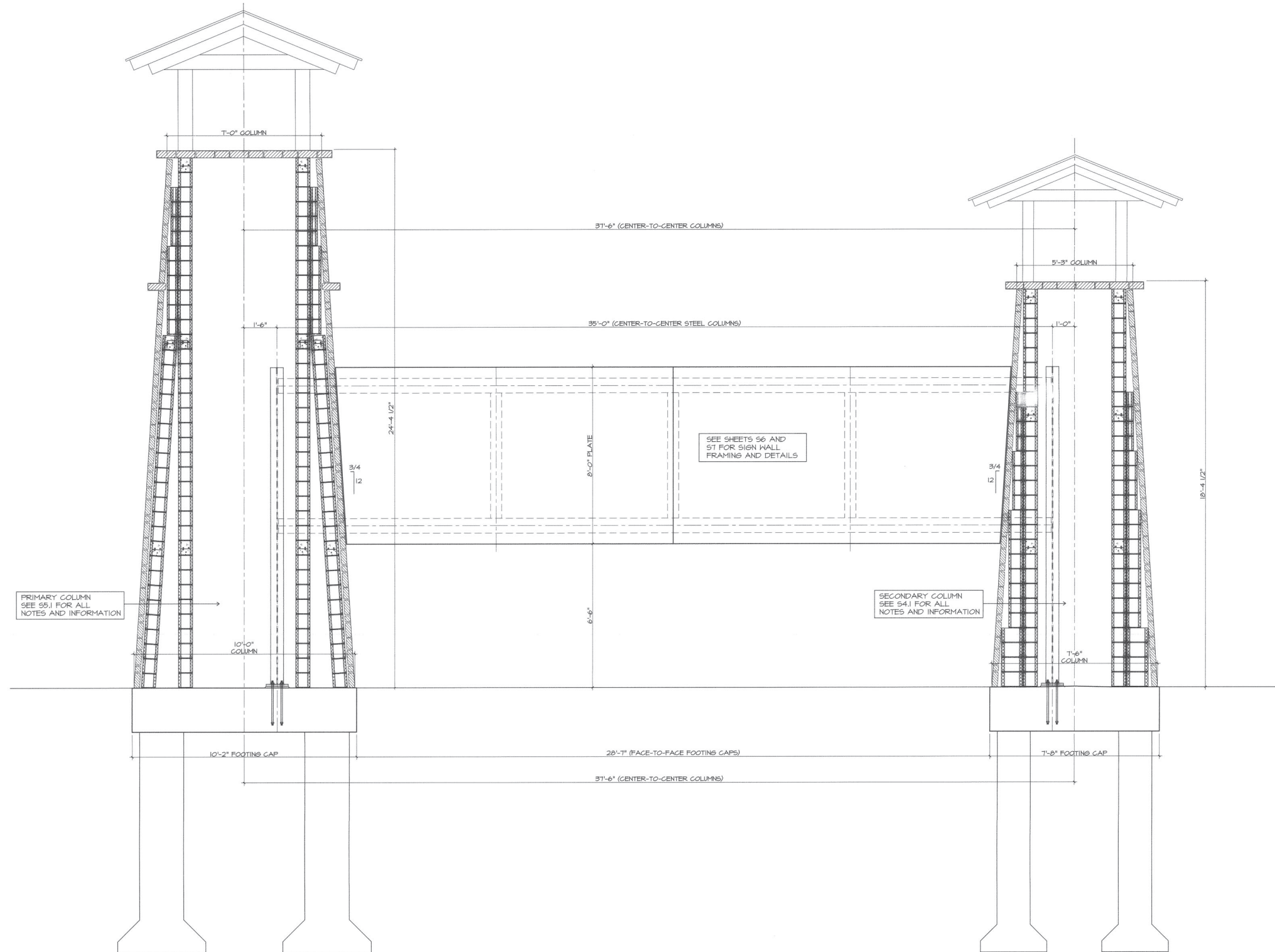
- LIGHTING NOTES:**
- CONTRACTOR SHALL INSTALL ALL WORK IN ACCORDANCE WITH FORT BEND COUNTY, TX CONSTRUCTION STANDARDS. CONTACT LANDSCAPE ARCHITECT WITH ANY CLARIFICATIONS OR QUESTIONS DURING THE BID PERIOD (281-646-1602).
 - CONTRACTOR SHALL COORDINATE WITH U.C.C. (713-223-4567) FOR UTILITY LOCATIONS A MIN. 48 HOURS PRIOR TO COMMENCING WORK.
 - CONTRACTOR SHALL VERIFY POWER LOCATION IN FIELD AND FINAL PLACEMENT OF STEEL CHANNEL/PANEL TO BE APPROVED BY LANDSCAPE ARCHITECT PRIOR TO INSTALL.
 - SCHEMATIC ELECTRICAL PLAN IS FOR REFERENCE. CONTRACTOR IS TO RETAIN LICENSED MASTER ELECTRICIAN FOR INSTALLATION AND PROVIDE CERTIFICATE FROM LICENSED MASTER ELECTRICIAN TO ENSURE ALL ELECTRICAL HAS BEEN INSTALLED PER STATE AND LOCAL CODES.
 - ALL DIRECT BURIAL WIRES MUST BE IN PVC CONDUIT AND PLACED MINIMUM OF 18" DEEP OR PER LOCAL CODE.
 - CONTRACTOR IS REQUIRED TO PLACE RED CAUTION RIBBON IN THE TRENCH AT LEAST 12 IN. ABOVE THE DIRECT BURIAL ELECTRIC LINES THAT ARE NOT ENCASED IN CONCRETE AND THAT ARE BURIED 18 IN. OR MORE BELOW GRADE.
 6. LIGHTING TO BE CONTROLLED BY PHOTOCELL AND TIME CLOCK. LOCATE AT STEEL CHANNEL.
 - CONTRACTOR IS REQUIRED TO PROVIDE A THIRD PARTY INSPECTION REPORT FOR ELECTRICAL WORK AS PART OF THE BID. K2 SERVICES IS RECOMMENDED. K2@K2SVC.COM 832-382-3434.

TYPE	QTY.	MANUFACTURER / MODEL	MOUNTING	COLOR	NOTES
⊕	2	10 AMP DUPLEX OUTLET WITH GROUND FAULT INTERRUPTER AND WEATHER PROOF	MOUNT 18" FROM FINISH ELEVATION		LOCATE DIRECTLY BEHIND AND NEAR BASE OF ENTRY SIGNAGE AND THINWALL. SEE PLAN FOR LOCATION
—	2	KIM LIGHTING FLOOD LIGHT 4348P70-32I-4KUV-DB-EP17	STANTION MOUNT	BRONZE	PROVIDE ALL NECESSARY ACCESSORIES AS REQUIRED FOR A COMPLETE AND OPERATING SYSTEM
△	3	KIM LIGHTING UPLIGHT EL700F312L-SKUV-DB-AGS74DB	STANTION MOUNT	BRONZE	PROVIDE ALL NECESSARY ACCESSORIES AS REQUIRED FOR A COMPLETE AND OPERATING SYSTEM
	1	BACKLIT LOGO	STANTION MOUNT		PROVIDE ALL NECESSARY ACCESSORIES AS REQUIRED FOR A COMPLETE AND OPERATING SYSTEM



Schematic Lighting Plan
Date: 02/18/2024
Scale: 1"=10'-0"
Job No.: 129-22-64
Revised:

MONTGOMERY BEND MONUMENT IMPROVEMENTS
 Pulte Homes of Texas
 Montgomery County, TX

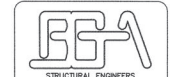


OVERALL PRIMARY MONUMENT ELEVATION 01/S3.1
SCALE: 1/2"=1'-0"

- NOTES:
1. SEE LANDSCAPE DRAWINGS FOR LAYOUT AND ADDITIONAL INFORMATION. NOTIFY ARCHITECT AND ENGINEER OF ANY DISCREPANCIES OR QUESTIONS.
 2. PRIOR TO CONSTRUCTION FIELD VERIFY THAT THERE ARE NO UNDERGROUND OBSTRUCTIONS WITH THE PROPOSED FOUNDATIONS.
 3. WORK THIS SHEET WITH OVERALL PLAN ON S5.2.



KGA DeForest
Landscape Architecture
24275 KATY HWY #300 KATY TX 77484
281.648.1802 KGADEFORST.COM



BGA ENGINEERS, INC.
STRUCTURAL ENGINEERS
TX ENG. FIRM #0233
13100 NORTHWEST FREEMAN, SUITE 350
HOUSTON, TEXAS 77040
(713) 329-9922

THIS DRAWING AND THE DESIGN HEREON IS THE PROPERTY OF BGA ENGINEERS, INC. NO PART OF THIS DRAWING OR DESIGN MAY BE REPRODUCED OR TRANSMITTED IN ANY FORM OR BY ANY MEANS, ELECTRONIC OR MECHANICAL, WITHOUT THE WRITTEN PERMISSION OF BGA ENGINEERS, INC.

SEAL
23012



**MONTGOMERY BEND
MONUMENT IMPROVEMENTS**
Pulte Homes of Texas
Montgomery County, TX

**Primary
Monument
Elevation**

Date: 08/03/2023
Scale: NOTED
Job No: 129-22-64/BGA#23012
Revised:

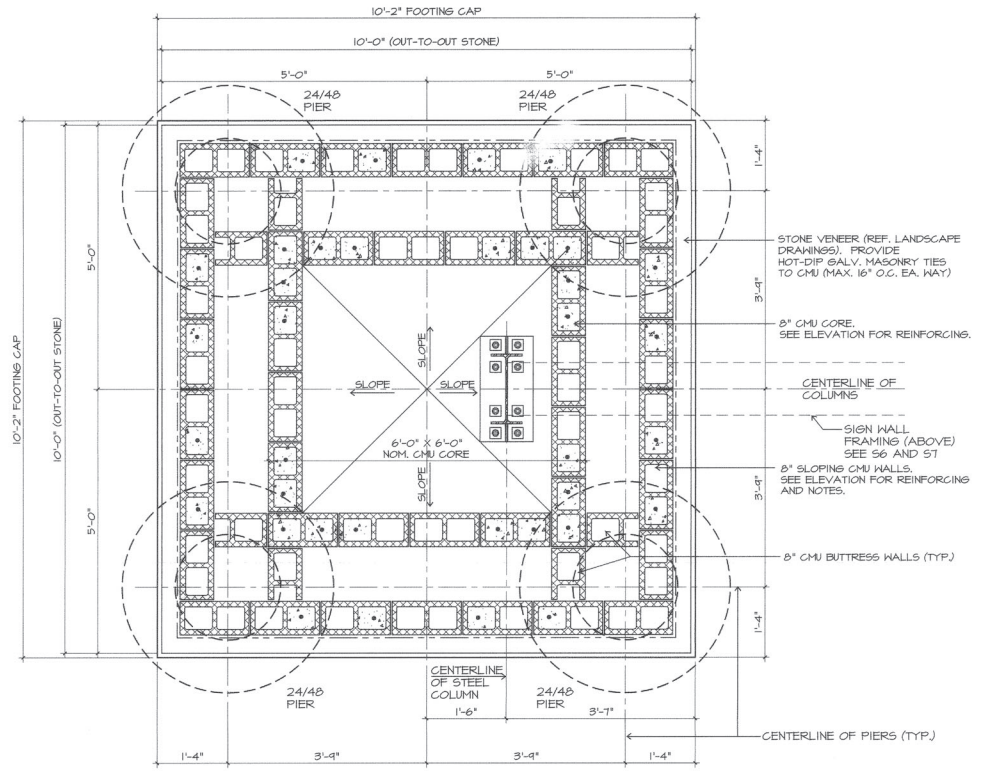
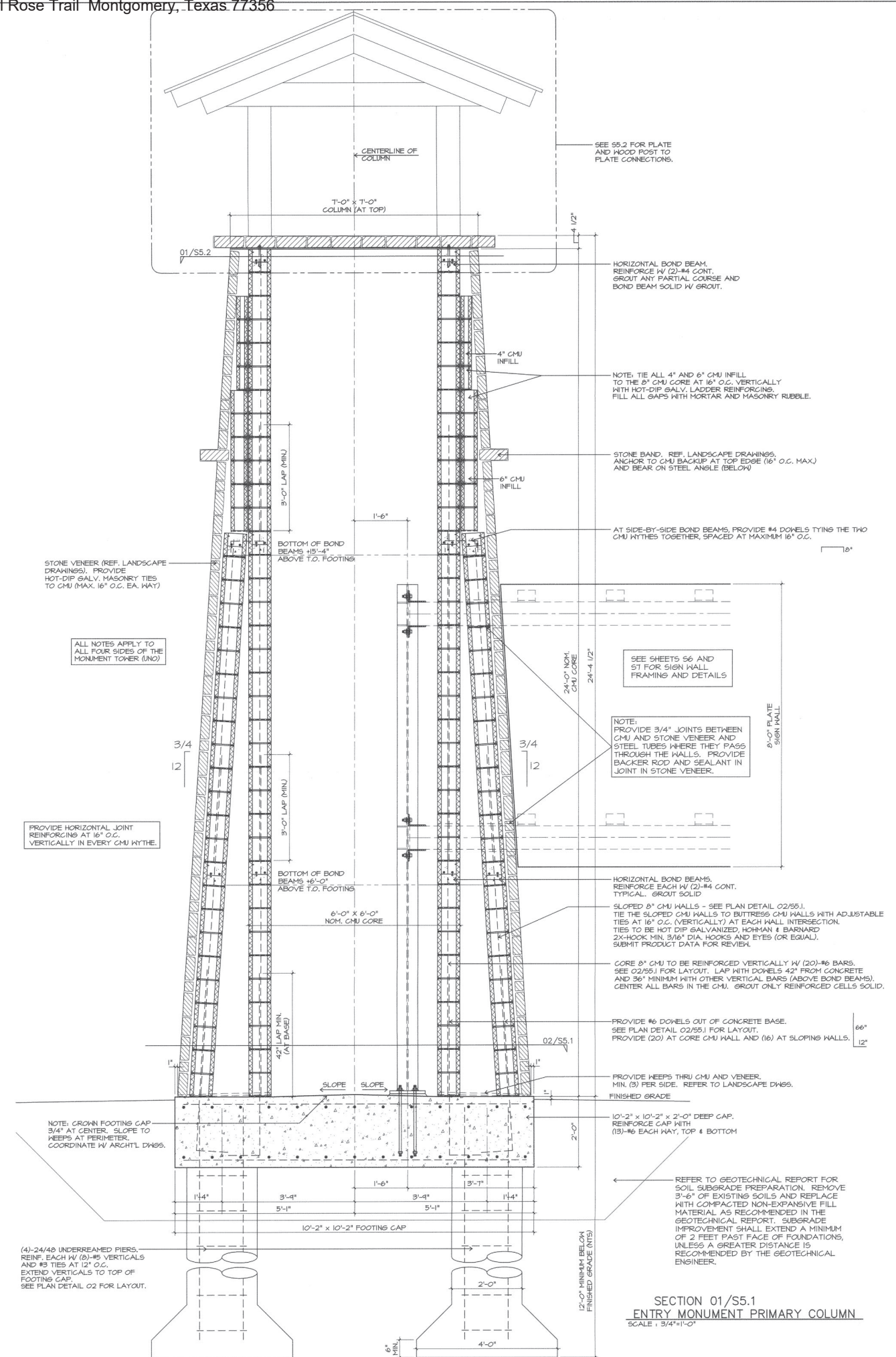
S-3.1



KGA DeForest
Landscape Architecture
24275 KATY HWY #1000 KATY TX 77144
281 648 1602 KGADEFORREST.COM



BGA ENGINEERS, INC.
STRUCTURAL ENGINEERS
TX ENG. FIRM #0333
13100 NORTHWEST FREEWAY, SUITE 350
HOUSTON, TEXAS 77040
(713) 339-9922
SEAL
23012
STATE OF TEXAS
MIKE HULBERT
76981
MIKE HULBERT, PE#161491



PRIMARY COLUMN - BASE PLAN 02/S5.1
SCALE: 3/4"=1'-0"

**MONTGOMERY BEND
MONUMENT IMPROVEMENTS**
Pulte Homes of Texas
Montgomery County, TX

**Primary
Column
Details**

Date: 08/03/2023
Scale: NOTED
Job No: 129-22-64/BGA#23012
Revised:

S-5.1

- NOTES:
- REFER TO LANDSCAPE DRAWINGS FOR LOCATION OF THE PRIMARY COLUMN.
 - PRIOR TO CONSTRUCTION, FIELD VERIFY THAT THERE ARE NO EXISTING UNDERGROUND UTILITIES THAT INTERFERE WITH ANY OF THE PROPOSED FOUNDATIONS.

SECTION 01/S5.1
ENTRY MONUMENT PRIMARY COLUMN
SCALE: 3/4"=1'-0"



KGA DeForest
Landscape Architecture
24275 KATY FWY #300 KATY TX 77494
281 648 1602
KGADEFORREST.COM

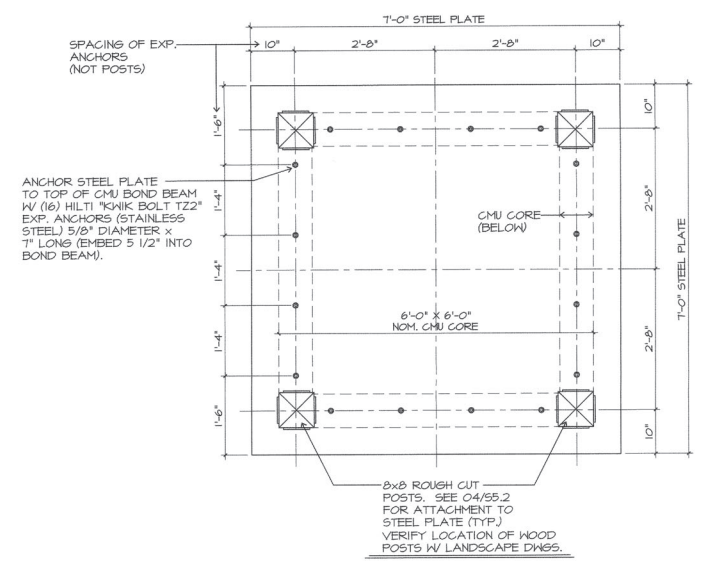


BGA ENGINEERS, INC.
STRUCTURAL ENGINEERS
TX ENG. FIRM #033
13100 NORTHWEST FREEMAN, SUITE 350
HOUSTON, TEXAS 77040
(713) 339-8922

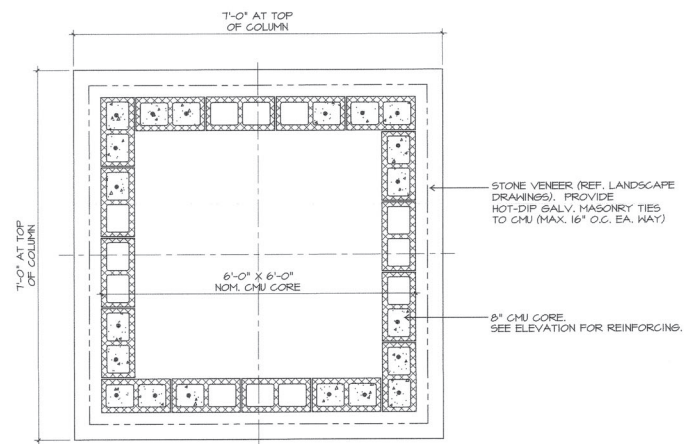
THIS DRAWING AND THE DESIGN HEREON IS THE PROPERTY OF BGA ENGINEERS, INC. NO PART OF THIS DRAWING OR DESIGN IS TO BE REPRODUCED OR TRANSMITTED IN ANY FORM OR BY ANY MEANS, ELECTRONIC OR MECHANICAL, WITHOUT THE WRITTEN PERMISSION OF BGA ENGINEERS, INC.



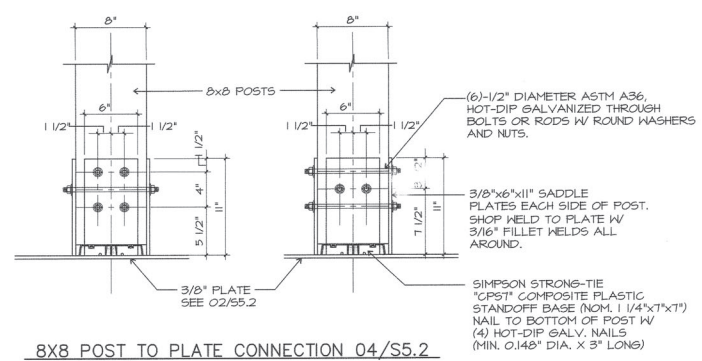
SEAL
STATE OF TEXAS
MIKE HULBERT
76991
08/2023
MIKE HULBERT, PE#76991



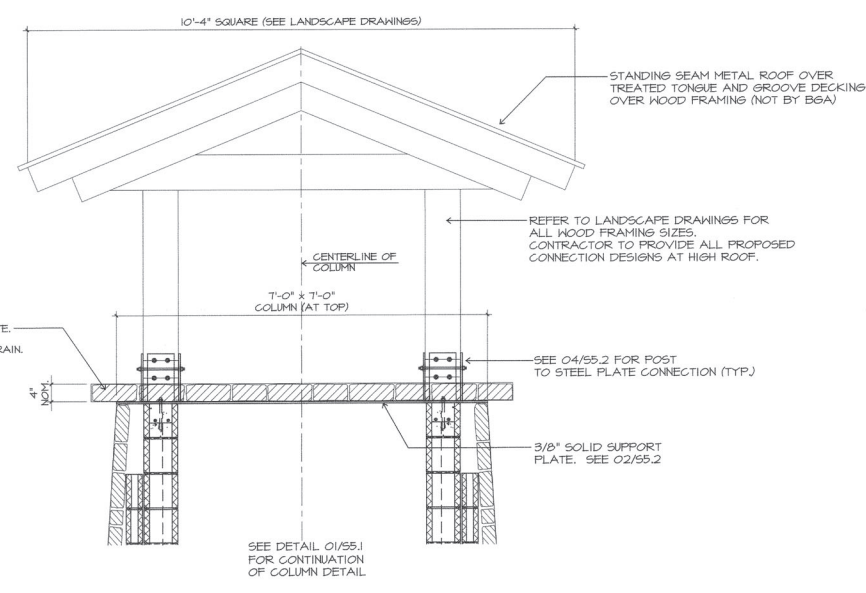
PRIMARY COLUMN PLATE/POST PLAN 02/S5.2
SCALE: 3/4"=1'-0"



PRIMARY COLUMN - UPPER PLAN 01/S5.2
SCALE: 3/4"=1'-0"



8X8 POST TO PLATE CONNECTION 04/S5.2
SCALE: 1 1/2"=1'-0"



COLUMN ROOF CONNECTION/PLATE ELEVATION 03/S5.2
SCALE: 3/4"=1'-0"

**MONTGOMERY BEND
MONUMENT IMPROVEMENTS**
Pulte Homes of Texas
Montgomery County, TX

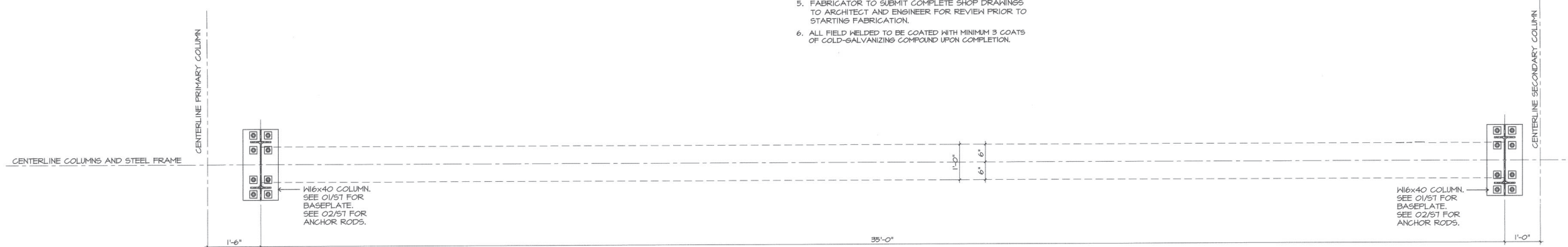
**Primary
Column
Details**

Date: 08/03/2023
Scale: NOTED
Job No: 129-22-64/BGA#23012
Revised:

S-5.2

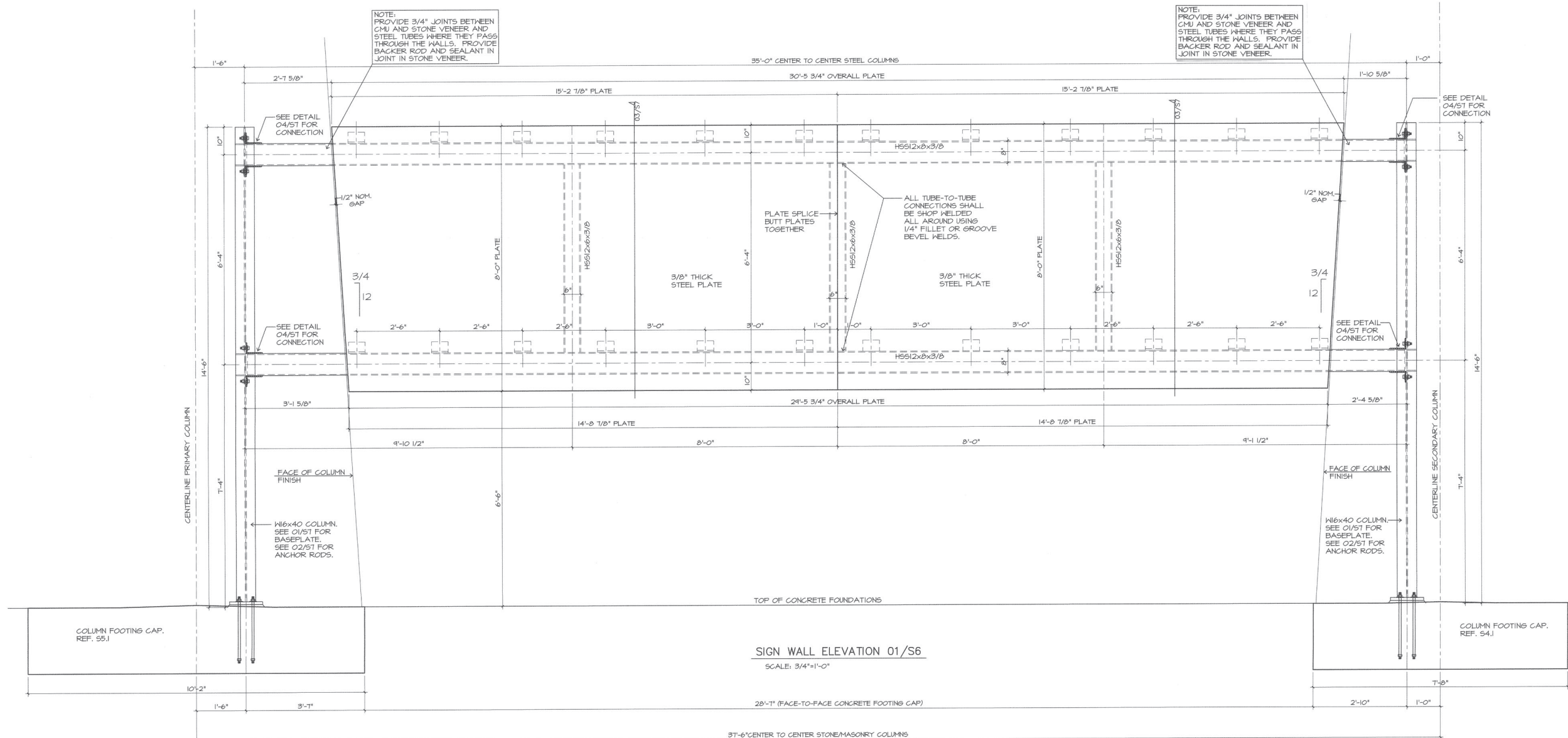
SIGN WALL STEEL FRAMING NOTES:

1. WORK THIS SHEETS WITH DETAILS ON SHEET S7.
2. ALL STRUCTURAL STEEL TO BE HOT DIP GALVANIZED AFTER FABRICATION. PROVIDE VENTS AS REQUIRED TO PREVENT WARPING OF THE FRAMING.
3. FABRICATE SIGN FRAMING IN ONE SECTION IN THE SHOP.
4. ALL FIELD WELDS TO BE CONTINUOUS/ALL AROUND SEAL WELDS (MIN. 3/16" FILLET OR BEVEL GROOVE WELDS).
5. FABRICATOR TO SUBMIT COMPLETE SHOP DRAWINGS TO ARCHITECT AND ENGINEER FOR REVIEW PRIOR TO STARTING FABRICATION.
6. ALL FIELD WELDED TO BE COATED WITH MINIMUM 3 COATS OF COLD-GALVANIZING COMPOUND UPON COMPLETION.



SIGN WALL PLAN DETAIL 02/S6

SCALE: 3/4"=1'-0"



SIGN WALL ELEVATION 01/S6

SCALE: 3/4"=1'-0"

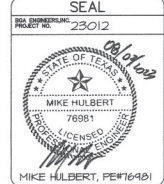


KGADeForest
Landscape Architecture
24275 KATY FWY #300 KATY TX 77484
281 846 1802 KGADFOREST.COM



BGA ENGINEERS, INC.
STRUCTURAL ENGINEERS
TX ENG. FIRM #8355
13100 NORTHWEST FREEMAN, SUITE 350
HOUSTON, TEXAS 77040
(713) 328-9922

SEAL
PROJECT NO. 23012



**MONTGOMERY BEND
MONUMENT IMPROVEMENTS**
Pulte Homes of Texas
Montgomery County, TX

**Sign Wall
Plan and
Elevation**

Date: 08/03/2023
Scale: NOTED
Job No: 129-22-64/BGA#23012
Revised: