

ORDINANCE NO. _____

AN ORDINANCE OF THE CITY COUNCIL OF THE CITY OF MONTGOMERY ACCEPTING AND APPROVING AN ANNUAL UPDATE TO THE SERVICE AND ASSESSMENT PLAN AND ASSESSMENT ROLL FOR CITY OF MONTGOMERY PUBLIC IMPROVEMENT DISTRICT NO. 1; PROVIDING FOR PAYMENT OF THE ANNUAL INSTALLMENT OF THE ASSESSMENTS IN ACCORDANCE WITH CHAPTER 372, TEXAS LOCAL GOVERNMENT CODE, AS AMENDED; AND PROVIDING FOR SEVERABILITY, AND PROVIDING AN EFFECTIVE DATE.

WHEREAS, on September 30, 2014, Resolution No. 2014-2 was adopted by a majority of the members of the governing body of the City of Montgomery (the "Municipality") authorized the creation of City of Montgomery Public Improvement District No. 1 ("P.I.D. No. 1"), a public improvement district established pursuant to the Public Improvement District Act, Chapter 372, Texas Local Government Code, as amended (the "Act"); and in accordance with its finding as to the advisability of improvement projects and services within P.I.D. No. 1; and

WHEREAS, by Resolution No. 2015-03, effectively dated the 24th day of February, 2015, the governing body of the Municipality directed that the Proposed Assessment Roll be filed with the Secretary of the governing body of the Municipality for public inspection as required by the Act, directed that a hearing to be held on the 24th day of March, 2015, at 6:00 p.m. at which the governing body of the Municipality would consider approving the Service/Assessment Plan and the Assessment Roll of P.I.D. No. 1, respectively, and assessing assessments payable at the time and at the rate and in the amount proposed in the Service/Assessment Plan against each parcel of property in P.I.D. No. 1, as set forth in the Assessment Roll, and directed the Secretary of the governing body of the Municipality to give notice of the hearing in the manner required by the Act;

WHEREAS, the governing body of the Municipality conducted the hearing at 6:00 p.m. on the 24th day of March, 2015, at which all persons who appeared, or requested to appear, in person or by their attorney, were given the opportunity to contend for or contest the Service/Assessment Plan, the Assessment Roll, and each proposed assessment, and offer testimony pertinent to any issue presented on the amount of the assessment, purpose of the assessment, special benefit of the assessment, and the penalties and interest on annual installments and on delinquent annual installments of the assessment;

WHEREAS, several persons appeared in support of the Service/Assessment Plan, and the levy of assessments as proposed in the Assessment Roll, including a representative of the owner of all the land located within P.I.D. No. 1;

WHEREAS, based on the evidence, information, and testimony provided to the City Council, the City Council found and determined that the Assessed Property would be specially benefited by the public improvement projects approved by the City Council and identified as the "Authorized Improvements" as set forth in the Service and Assessment Plan;

WHEREAS, based on the evidence, information, and testimony provided to the City Council, the City Council found and determined: (i) that the method of apportioning the cost of the Authorized Improvements against the Assessed Property and the real and true owners thereof as set forth in the Service and Assessment Plan is just and equitable; (ii) that such method of apportioning the cost would produce substantial equality considering the benefits to be received by and the burdens imposed on the Assessed Property; and (iii) that the assessments levied and charges declared against the Assessed Property and the real and true owners thereof as set forth in the Service and Assessment Plan are just and equitable; and

WHEREAS, after closing the public hearing on March 24, 2015, and after considering all evidence, information, and testimony provided to the City Council, and taking into consideration the fact that there were no written or oral objections to the proposed assessments, and further taking into consideration that the owners of 100% of the property liable for assessment consented to the proposed assessments, the governing body of the Municipality found and determined that the Service and Assessment Plan should be approved and the assessments should be levied as provided in the Assessment Roll;

WHEREAS, the governing body of the Municipality, after considering all evidence presented at the hearing, both written and documentary, and all written comments and statements filed with the Municipality, passed and adopted Ordinance No. 2015-02 approving the Service and Assessment Plan attached thereto;

WHEREAS, after the adoption of the Service and Assessment Plan, a portion of the property included within the boundaries of P.I.D. No. 1 has been developed and triggered the collection of the annual installment of the Assessments on 8.9425 acres;

WHEREAS, pursuant to the Act, the Municipality has caused the preparation of an annual update of the Service and Assessment Plan and the Assessment Roll (the "Annual Service Plan") for the purpose of determining the annual budget for improvements and for making updates to the Assessment Roll to reflect the installment of Assessments to be collected for 2021;

WHEREAS, the City has determined that the Annual Service Plan reflects the amount of the Annual Installment of the Assessments, previously levied pursuant to Ordinance No. 2015-02; and

WHEREAS, a written notice of the date, hour, place and subject to this meeting of the City Council was posted at a place convenient to the public for the time required by law preceding this meeting, as required by the Open Meetings Act, Chapter 551, Texas Government Code, as amended, and that this meeting has been open to the public as required by law at all times during which this Ordinance and the subject matter hereof has been discussed, considered, and formally acted upon.

NOW, THEREFORE, BE IT ORDAINED BY THE CITY COUNCIL OF THE CITY OF MONTGOMERY, TEXAS:

Section 1. Terms.

Terms not otherwise defined herein are defined in the Annual Update to the Service and Assessment Plan attached hereto as Exhibit A (the "Annual Service Plan").

Section 2. Findings.

The findings and determinations set forth in the preambles are hereby incorporated by reference for all purposes. The governing body of the Municipality hereby finds, determines, and ordains, as follows:

(a) The Annual Service Plan should be approved;

(b) The Assessment Roll in the form attached as Appendix C to the Annual Service Plan (the "Assessment Roll") should be approved as the assessment roll for the P.I.D. No. 1 for the 2021 tax year; and

(c) The provisions of the Service and Assessment Plan relating to due and delinquency dates for the Assessments, interest on Annual Installments, interest and penalties on delinquent Assessments and delinquent Annual Installments of the Assessments, and procedures in connection with the imposition and collection of Assessments are now and shall remain in effect and are applicable to the collection of the Annual Installments identified in the Annual Service Plan.

Section 3. Assessment Plan.

The Annual Service Plan is hereby accepted and approved.

Section 4. Assessment Roll.

The Assessment Roll attached to the Annual Service Plan is hereby accepted and approved.

Section 5. Severability.

If any provision, section, subsection, sentence, clause, or phrase of this Ordinance, or the application of same to any person or set of circumstances is for any reason held to be unconstitutional, void, or invalid, the validity of the remaining portions of this Ordinance or the application to other persons or sets of circumstances shall not be affected thereby, it being the intent of the City Council that no portion hereof, or provision or regulation contained herein shall become inoperative or fail by reason of any unconstitutionality, voidness, or invalidity of any other portion hereof, and all provisions of this Ordinance are declared to be severable for that purpose.

Section 6. Effective Date.

This Ordinance shall take effect and become effective on upon passage and execution hereof.

PASSED, APPROVED, AND ADOPTED, this 8th day of June, 2021.

City of Montgomery

Mayor

Attest:

City Secretary

(SEAL)

EXHIBIT A
ANNUAL SERVICE PLAN

CITY OF MONTGOMERY
PUBLIC IMPROVEMENT DISTRICT NO. 1
SERVICE AND ASSESSMENT PLAN

*As updated
June 8, 2021*

CITY OF MONTGOMERY
PUBLIC IMPROVEMENT DISTRICT NO. 1

SERVICE AND ASSESSMENT PLAN

Table of Contents

Section I	Plan Description and Defined Terms	3
Section II	Property Included in PID No. 1	7
Section III	Description of Authorized Improvements	8
Section IV	Service Plan	12
Section V	Assessment Plan	14
Section VI	Terms of the Assessments	18
Section VII	Assessment Roll	22
Section VIII	Miscellaneous Provisions	23

List of Appendixes

- Appendix A PID No. 1 Map
- Appendix B Estimated Costs of the Authorized Improvements
- Appendix C Assessment Roll

Section I
PLAN DESCRIPTION AND DEFINED TERMS

A. Introduction

On September 30, 2014, the City of Montgomery City Council passed Resolution No. 2014-2 approving and authorizing the creation of City of Montgomery Public Improvement District No. 1 ("PID No. 1") to finance the costs of certain public improvements for the benefit of property in PID No. 1, all of which is located within the corporate limits of the City of Montgomery. This Service and Assessment Plan addresses the improvements to be provided for PID No. 1.

Chapter 372 of the Texas Local Government Code, "the Public Improvement Assessment Act" (as amended, the "PID Act"), governs the creation and operation of public improvement districts within the State of Texas. This Service and Assessment Plan has been prepared pursuant to Sections 372.013, 372.014, 372.015 and 372.016 of the PID Act. According to Section 372.013 of the PID Act, a service plan "must cover a period of at least five years and must also define the annual indebtedness and the projected costs for improvements. The plan shall be reviewed and updated annually for the purpose of determining the annual budget for improvements." The service plan is described in Section IV of this Service and Assessment Plan.

Section 372.014 of the PID Act states that "an assessment plan must be included in the annual service plan." The assessment plan is described in Section V of this Service and Assessment Plan.

Section 372.015 of the PID Act states that "the governing body of the municipality or county shall apportion the cost of an improvement to be assessed against property in an improvement district." The method of assessing the PID Costs and apportionment of such costs to the property in the PID No. 1 are included in Section V of this Service and Assessment Plan.

Section 372.016 of the PID Act states that "after the total cost of an improvement is determined, the governing body of the municipality or county shall prepare a proposed assessment roll. The roll must state the assessment against each parcel of land in the district, as determined by the method of assessment chosen by the municipality or county under this subchapter." The Assessment Roll for PID No. 1 is included as Appendix C of this Service and Assessment Plan. The Assessments as shown on the Assessment Roll are based on the method of assessment and apportionment of costs described in Section V of this Service and Assessment Plan.

Contemporaneously herewith, the City and Developer have entered into that certain Facilities and Creation Cost Reimbursement Agreement, dated March 24, 2015 (the "PID Reimbursement Agreement"). The PID Reimbursement Agreement contains a more detailed description of many of the concepts addressed in this Service and Assessment Plan, therefore, the two documents should be read as a whole in order to have a more complete understanding of the terms addressed in each of the agreements.

B. Definitions Capitalized terms used herein shall have the meanings ascribed to them as follows:

"Administrator" means the employee or designee of the City who shall have the responsibilities provided for herein or in any other agreement approved by the City Council relative to PID No. 1.

"Administrative Expenses" mean the costs associated with or incident to the administration, organization, maintenance and operation of PID No. 1, including, but not limited to, the costs of: (i) creating and organizing PID No. 1, including conducting hearings, preparing notices and petitions, and all

costs incident thereto, engineering fees, legal fees and consultant fees, and (ii) the annual administrative, organization, maintenance, and operation costs and expenses associated with, or incident and allocable to, the administration, organization, maintenance and operation of PID No. 1 and the Authorized Improvements, including the cost of each Annual Service Update Plan. Amounts collected in conjunction with Annual Installments for Administrative Expenses and not expended for actual Administrative Expenses shall be carried forward and applied to reduce Administrative Expenses in subsequent years to avoid the over-collection of Administrative Expenses.

"Annual Collection Costs" mean the following actual or budgeted costs, as applicable, related to the annual collection costs of outstanding Assessments paid in installments, including the costs or anticipated costs of: (i) computing, levying, collecting and transmitting the Assessments (whether by the City, the Administrator or otherwise), (ii) the City and the Administrator in the discharge of their duties relative to PID No. 1, and (iii) the City in any way related to the collection of the Assessments in installments, including, without limitation, the administration of PID No. 1, maintaining the record of installments, payments and reallocations and/or cancellations of Assessments, including, without limitation, any associated legal expenses, the reasonable costs of other consultants and advisors and contingencies for such costs. Annual Collection Costs collected and not expended for actual Annual Collection Costs shall be carried forward and applied to reduce Annual Collection Costs in subsequent years to avoid the over-collection of Annual Collection Costs.

"Annual Installment" means, with respect to each Parcel, each annual payment of the Assessment, as shown on the Assessment Roll attached hereto as Appendix C or an Annual Service Plan Update, and calculated as provided in Section VI of this Service and Assessment Plan.

"Annual Service Plan Update" has the meaning set forth in the first paragraph of Section IV of this Service and Assessment Plan.

"Assessed Property" means the property on which Assessments have been imposed as shown in the Assessment Roll, as the Assessment Roll is updated each year by the Annual Service Plan Update. Assessed Property includes Parcels within PID No. 1 other than Non-Benefited Property.

"Assessment" means the assessment levied against Parcels within PID No. 1 imposed pursuant to the Assessment Ordinance and the provisions herein as shown on the Assessment Roll, subject to reallocation upon the subdivision of such Parcel or reduction according to the provisions herein and the PID Act. The Assessment for a Parcel consists of the Annual Installments to be collected in all years and includes the Assessments, interest on the Assessments, and Collection Costs pertaining to the Assessment.

"Assessment Ordinance" means the ordinance approved by the City Council to approve the imposition of the Assessments.

"Assessment Revenues" mean the revenues actually received by the City from Assessments.

"Assessment Roll" means the document included in this Service and Assessment Plan as Appendix C, as updated, modified or amended from time to time in accordance with the procedures set forth herein and in the PID Act.

"Authorized Improvements" mean those public improvements described in Appendix B of this Service and Assessment Plan and Section 372.003 of the PID Act which are constructed pursuant to the PID Reimbursement Agreement, which are to be undertaken for the benefit of property in PID No. I.

"Authorized Improvement Costs" mean the actual or budgeted costs, as applicable, of all or any portion of the Authorized Improvements, as shown in Appendix B.

"Benefited Property" means property within PID No. 1 that receives a benefit from the Authorized Improvements, which consists of all Parcels within PID No. 1 other than Non-Benefited Property. Benefited Property is identified on the map of PID No. 1 included in Appendix A, with a list of Parcels of Benefited Property included in Appendix C.

"City" means the City of Montgomery, Texas.

"City Council" means the duly elected governing body of the City.

"Delinquent Collection Costs" mean interest, penalties and expenses incurred or imposed with respect to any delinquent Annual Installments of an Assessment in accordance with §372.018(b) of the PID Act and the costs related to pursuing collection of a delinquent Assessment and foreclosing the lien against the Assessed Property, including attorneys' fees.

"Developer" means collectively, Ogorchock Investments, L.P., a Texas limited partnership and Ogorchock ATH, LLC .

"Non-Benefited Property" means Parcels within the boundaries of PID No. 1 that accrue no special benefit from the Authorized Improvements, including Owner Association Property, Public Property and easements that create an exclusive use for a public utility provider. Property identified as Non-Benefited Property at the time the Assessments (i) are imposed or (ii) are reallocated pursuant to a subdivision of a Parcel is not assessed. Assessed Property converted to Non-Benefited Property, if the Assessments may not be reallocated pursuant to the provisions herein remains subject to the Assessments and requires the Assessments to be prepaid as provided for in Section VI. C. 2.

"Owner Association Property" means property within the boundaries of PID No. 1 that is owned by or irrevocably offered for dedication to, whether in fee simple or through an exclusive use easement, a property owners' association.

"Parcel" or **"Parcels"** means a parcel or parcels within PID No. 1 identified by either a tax map identification number assigned by the Montgomery County Appraisal District for real property tax purposes or by lot and block number in a final subdivision plat recorded in the real property records of Montgomery County.

"PID Act" means Texas Local Government Code Chapter 372, Public Improvement Assessment Act, Subchapter A, Public Improvement Districts, as amended.

"PID No. 1" means City of Montgomery Public Improvement District No. 1.

"PID Costs" mean the portion of the Authorized Improvement Costs to be funded by PID No. 1 as explained in Section III.

"Public Property" means property within the boundaries of PID No. 1 that is owned by or irrevocably offered for dedication to the federal government, the State of Texas, the City, a school district, a public utility provider or any other public agency, whether in fee simple or through an exclusive use easement.

"Service and Assessment Plan" means this Service and Assessment Plan prepared for PID No. 1 pursuant to the PID Act.

"Trigger Date" means with respect to an unimproved parcel, the date (i) the parcel is final platted, (ii) one or more permanent commercial structures are constructed thereon, and (iii) the city has issued a certificate of occupancy for such completed permanent structure(s); however, such date shall not be prior to September 1, 2018.

Section II
PROPERTY INCLUDED IN THE PID

PID No. 1 is located within the corporate limits of the City of Montgomery, Texas and contains approximately 86.814 acres of land. A map of the property within PID No. 1 is shown on Appendix A to this Service and Assessment Plan. The property within PID No. 1 is proposed to be developed with warehouses or office warehouses.

Table II-A
Proposed Commercial Development

Description	No. of Platted/Improved Acres
Various Commercial Reserves	72

The current Parcels in PID No. I are shown on the Assessment Roll and the map included as Appendix A.

The estimated number of Platted/Improved Acres at the build-out of PID No. 1 is estimated to be as follows:

72 net acres of commercial reserves (excluding road right-of-way).

Section III
DESCRIPTION OF THE AUTHORIZED IMPROVEMENTS

Section 372.003 of the PID Act defines the improvements that may be undertaken by a municipality or county through the establishment of a public improvement district, as follows:

372.003. Authorized Improvements

- (a) If the governing body of a municipality or county finds that it promotes the interests of the municipality or county, the governing body may undertake an improvement project that confers a special benefit on a definable part of the municipality or county or the municipality's extraterritorial jurisdiction. A project may be undertaken in the municipality or county or the municipality's extraterritorial jurisdiction.

- (b) A public improvement may include:
 - (i) landscaping;
 - (ii) erection of fountains, distinctive lighting, and signs;
 - (iii) acquiring, constructing, improving, widening, narrowing, closing, or rerouting of

- sidewalks or of streets, any other roadways, or their rights-of way;
- (iv) construction or improvement of pedestrian malls;
 - (v) acquisition and installation of pieces of art;
 - (vi) acquisition, construction, or improvement of libraries;
 - (vii) acquisition, construction, or improvement of off-street parking facilities;
 - (viii) acquisition, construction, improvement, or rerouting of mass transportation facilities;
 - (ix) acquisition, construction, or improvement of water, wastewater, or drainage facilities or improvements;
 - (x) the establishment or improvement of parks;
 - (xi) projects similar to those listed in Subdivisions (i)-(x);
 - (xii) acquisition, by purchase or otherwise, of real property in connection with an authorized improvement;
 - (xiii) special supplemental services for improvement and promotion of the district, including services relating to advertising, promotion, health and sanitation, water and wastewater, public safety, security, business recruitment, development, recreation, and cultural enhancement; and
 - (xiv) payment of expenses incurred in the establishment, administration and operation of the district.

After analyzing the public improvement projects authorized by the PID Act, the City has determined that the Authorized Improvements as described in Appendix B and shown on the diagram included as Appendix C should be undertaken by the City for the benefit of the property within PID No. 1. The estimated Authorized Improvement Costs are shown by Table III-A.

Table III-A
Estimated Authorized Improvement Costs

Authorized Improvements	Total PID No. 1 Estimated Cost
Improvements	
Roadway improvements	\$2,766,910
Water distribution system improvements	421,150
Storm sewer collection system improvements	132,487
Wastewater collection system improvements	563,752
Engineering, surveying	440,319
Soft costs including city, professional and miscellaneous fees	119,200
FM 1097 widening, striping, TxDot	131,528

General contingency	355,505
Subtotal:	<u>4,930,851</u>
Estimated PID Creation Costs	\$50,000
<hr/>	
Total Estimated Authorized Improvement Costs	<u>\$4,980,851</u>

The costs shown in Table III-A are current estimates and may be revised in Annual Service Plan Updates.

The Authorized Improvements include on-site improvements and limited off-site improvements.

On-site Improvements

The on-site roadway improvements include:

Summit Park Drive and other internal streets – The project consists of construction approximately 4,900 linear feet of 24’ wide concrete streets (8” concrete) with 6’ shoulders (6” concrete) on each side within a dedicated street right-of-way inside PID No. 1.

The on-site water distribution system improvements consist of approximately 8,400 linear feet of 12-inch water line within the proposed street right-of-ways and easements within PID No. 1. The water lines will connect to an existing City of Montgomery main along the south side of FM 109.

The on-site storm sewer collection system improvements include

The onsite storm sewer collection systems include approximately 4,900 linear feet of ditch cut in within the proposed street right-of-way inside PID No. 1 to direct flow to the existing creeks within the development.

The on-site wastewater collection system improvements consist of approximately 5,000 linear feet of 8-inch wastewater lines within the proposed street right-of-ways within PID No. 1. A portion of these lines will connect to a proposed lift station using approximately 650’ linear feet of 4” force main to pump the wastewater to a proposed sanitary main. All proposed lines will ultimately connect to an existing main on the south side of FM 1097.

Off-site Improvements

The offsite roadway improvements include a portion of FM 1097 being re-striped for a turn lane to allow safe access into the proposed Summit Park Drive.

Additional details of the Authorized Improvements are shown in Appendix B attached to this Service and Assessment Plan.

Table III-B shows the allocation of the Authorized Improvements costs to PID No. 1.

Table III-B
Allocation of the Authorized Improvement Costs

Authorized Improvements	Total Estimated Cost	Percentage Allocated	Total PID No. 1 Estimated Cost
Improvements benefiting PID No.1			
Roadway improvements		100%	\$2,766,910
Water distribution system improvements		100%	421,150
Storm sewer collection system improvements		100%	132,487
Wastewater collection system improvements		100%	563,752
Engineering, surveying		100%	440,319
Soft costs including city, professional and miscellaneous fees		100%	119,200
FM 1097 widening, striping, TxDot		100%	131,528
General contingency		100%	355,505
Subtotal:			4,930,851
 Estimated PID Creation Costs		 100%	 50,000
Total Estimated Authorized Improvement Costs			\$4,980,851

The costs shown in Tables III-A and III-B are estimates and may be revised in Annual Service Plan Updates. The detailed costs of the Authorized Improvements are shown in Appendix B to this Service and Assessment Plan. Savings from one line item may be applied to a cost increase in another line item. These savings may be applied only to increases in costs of the Authorized Improvements.

Section IV
SERVICE PLAN

A. Sources and Uses of Funds

The PID Act requires a service plan to cover a period of at least five years. The service plan is required to define the annual projected costs and indebtedness for the Authorized Improvements undertaken within PID No. 1. As of the date of this Service and Assessment Plan approximately 15% of the Authorized Improvements have been constructed and funded by the Developer. PID No. 1 will not directly fund any of the Authorized Improvements. Instead, in accordance with the PID Reimbursement Agreement the Developer will construct the Authorized Improvements and the City will reimburse the Developer solely from the net proceeds of the Assessments. The plan shall be reviewed and updated annually for the purpose of determining the annual budget for the Authorized Improvements. The annual update to this Service and Assessment Plan is herein referred to as the "Annual Service Plan Update."

Table IV-A shows the sources.

Table IV-A
Sources and Uses of Funds

Sources of Funds:			
	Reimbursed by the PID	Not Reimbursed by the PID	Total
Funded By Developer:	\$3,000,000	\$1,980,851	\$4,980,851
Uses of Funds:			
Construction Costs:	\$2,950,000	\$1,980,851	
Creation Costs:			
Costs paid by Developer:	\$50,000	\$0	
Total:			\$4,980,851

This sources and uses of funds table is subject to revision and the actual sources and uses of funds for any line item may be different than shown above. The sources and uses of funds shown in Table 1V-A shall be updated each year in the Annual Service Plan Update to reflect any budget revisions or actual costs of the Authorized Improvements.

B. Annual Costs and Indebtedness

The annual projected costs and annual projected indebtedness is shown by Table 1V-B. The annual projected costs and indebtedness is subject to revision and shall be updated each year in the Annual Service Plan Update to reflect any changes in the PID Costs expected for each year and the cumulative amounts owed to the Developer. Notwithstanding the preceding, the Developer shall be reimbursed solely from the net proceeds (after payment of all costs of the City) of the Assessments which will be significantly less than total projected costs of the Authorized Improvements.

Table IV-B
Annual Projected Costs and Indebtedness

Year	Annual Projected Costs
2015	\$2,054,355
2016	
2017	
2018	
2019	\$990,964
2020	
2021	
2022	\$1,953,442
2023	
Total	\$4,998,761

[Remainder of page left intentionally blank]

Section V
ASSESSMENT PLAN

A. Introduction

The PID Act requires the City Council to apportion the PID Costs on the basis of special benefits conferred upon the property because of the Authorized Improvements. The PID Act provides that the PID Costs may be assessed: (i) equally per front foot or square foot; (ii) according to the value of the property as determined by the governing body, with or without regard to improvements on the property; or (iii) in any other manner that results in imposing equal shares of the cost on property similarly benefited. The PID Act further provides that the governing body may establish by ordinance or order reasonable classifications and formulas for the apportionment of the cost between the municipality and the area to be assessed and the methods of assessing the special benefits for various classes of improvements. Section V of this Service and Assessment Plan describes the special benefit received by each Parcel of Assessed Property as a result of the Authorized Improvements, provides the basis and justification for the determination that this special benefit exceeds the amount of the Assessments, and establishes the methodology by which the City Council allocates the special benefit of the Authorized Improvements to Parcels in a manner that results in equal shares of the PID Costs being apportioned to Parcels similarly benefited. The determination by the City Council of the assessment methodology set forth below is the result of the discretionary exercise by the City Council of its legislative authority and governmental powers and is conclusive and binding on the Developer and all future owners within the Assessed Property.

B. Special Benefit

Benefited Property receives a benefit from the Authorized Improvements. Among the Benefited Property, the Assessed Property will receive a direct and special benefit from the Authorized Improvements, and this benefit will be equal to or greater than the amount of the Assessments. The Authorized Improvements (more particularly described in line-item format on Appendix B to this Service and Assessment Plan) and the costs incurred in the establishment, administration, and operation of the PID No. 1 shown in Table IV-A are authorized by the Act. These improvements are provided specifically for the benefit of the Assessed Property.

The owners of all of the Assessed Property has acknowledged and agreed to the determinations and findings as to benefits by the City Council in the Service and Assessment Plan and the Assessment Ordinance, specifically including the special benefit conferred on the Assessed Property by the Authorized Improvements, as well as any other terms and provisions within these documents, and has, therefore, consented to the imposition of the Assessments to pay the PID Costs. The owners are acting in their own interests in consenting to this imposition, because the special benefit conferred upon the Assessed Property by the Authorized Improvements exceeds the amount of the Assessments.

The public improvements provide a special benefit to the Assessed Property as a result of the close proximity of these improvements to the Assessed Property and the specific purpose of these improvements of providing infrastructure for the Assessed Property. In other words, the Assessed Property could not be used in the manner proposed without the construction of the

Authorized Improvements. The Authorized Improvements are being provided specifically to meet the needs of the Assessed Property as required for the proposed use of the property.

The Assessments are being levied to provide the Authorized Improvements, which are required for the highest and best use of the Assessed Property (i.e., the use of the property that is most valuable, including any costs associated with that use). Highest and best use can be defined as "the reasonably probable and legal use of property, which is physically possible, appropriately supported, financially feasible, and that results in the highest value." (*Dictionary of Real Estate Appraisal, Third Edition.*) The Authorized Improvements are expected to be required for the proposed use of the Assessed Property to be physically possible, appropriately supported, financially feasible, and maximally productive.

The Developer has evaluated the potential use of the property and has determined that the highest and best use of the property is the use intended and the legal use for the property as described in Section II of this Service and Assessment Plan. The use of the Assessed Property as described herein will require the construction of the Authorized Improvements.

Funding of the PID Costs by the Developer and reimbursement of the Developer by PID No. 1 is determined to be the most beneficial means of providing for the Authorized Improvements. Since the Authorized Improvements are required for the highest and best use of the Assessed Property, and PID No. 1 provides the most beneficial means of providing the Authorized Improvements, the Assessments result in a special benefit to the Assessed Property, and this special benefit exceeds the amount of the Assessments. This conclusion is based on and supported by the evidence, information, and testimony provided to the City Council.

In summary, the Assessments result in a special benefit to the Assessed Property for the following reasons:

1. The Authorized Improvements are being provided specifically for the use of the Assessed Property, are necessary for the proposed best use of the property and provide a special benefit to the Assessed Property as a result;
2. The Developer has consented to the imposition of the Assessments for the purpose of providing the Authorized Improvements and the Developer is acting in its interest by consenting to this imposition;
3. The Authorized Improvements are required for the highest and best use of the property;
4. The highest and best use of the Assessed Property is the use of the Assessed Property that is most valuable (including any costs associated with the use of the Assessed Property);
5. Financing of the PID Costs by PID No. 1 is determined to be the most beneficial means of providing for the Authorized Improvements; and,
6. As a result, the special benefits to the Assessed Property from the Authorized Improvements will be equal to or greater than the Assessments.

C. Assessment Methodology

1. The PID Costs may be assessed by the City Council against the Assessed Property so long as the special benefit conferred upon the Assessed Property by the Authorized Improvements equals or exceeds the Assessments. The PID Costs may be assessed using any methodology that results in the imposition of equal shares of the PID Costs on Assessed Property similarly benefited.
2. For purposes of this Service and Assessment Plan, the City Council has determined that the PID Costs shall be allocated to the Assessed Property equally on the basis of \$41,666.66 per acre of platted acreage that encompasses a completed permanent structure for which the City has issued a Certificate of Occupancy and that such method of allocation will result in the imposition of equal shares of the PID Costs to Parcels similarly benefited.
3. Having taken into consideration the matters described above, the City Council has determined that allocating the PID Costs among Parcels based on improved acreage containing a completed permanent structure for which the City has issued a certificate of occupancy. Accordingly, Assessments are allocated to each Parcel of Assessed Property on the basis of it being fully developed, a final plot has been recorded, commercial structure(s) have been completed and a certificate of occupancy has been issued.
4. The following table (Table V-A) shows the calculation of the Assessment per acre. There are a total of 72 acres expected to be developed and improved on the Assessed Property. The total Assessments, which represent the aggregate sum of the total Annual Installments, are equal to \$3,000,000 as shown in Table IV-C. As a result the Assessment per acre is \$41,666.66 as shown in Table V-A below.

TABLE V-A
Assessment per Improved Acre

<u>Description</u>	<u>Assessments</u>
Total Amount	\$3,000,000.00
Estimated total acreage	72
Assessment per acre	\$41,666.66

Table V-B in the following page shows the estimated Annual Installment per acre from the Trigger Date through the fifteen (15) year amortization of the Assessment.

[Remainder of page left intentionally blank]

TABLE V-B
Annual Installment per Improved Acre from Trigger Date*

Year	Principal	Interest	Total Payment	Plus Administrative Expenses **
1	1,790.12	2,500.00	4,290.12	\$50.00
2	1,897.52	2,392.59	4,290.12	\$50.00
3	2,011.37	2,278.74	4,290.12	\$50.00
4	2,132.06	2,158.06	4,290.12	\$50.00
5	2,259.98	2,030.14	4,290.12	
6	2,395.58	1,894.54	4,290.12	
7	2,539.31	1,750.80	4,290.12	
8	2,691.67	1,598.44	4,290.12	
9	2,853.17	1,436.94	4,290.12	
10	3,024.36	1,265.75	4,290.12	
11	3,205.82	1,084.29	4,290.12	
12	3,398.17	891.94	4,290.12	
13	3,602.06	688.05	4,290.12	
14	3,818.19	471.93	4,290.12	
15	4,047.28	242.84	4,290.12	
Total	41,666.66	22,685.05	64,351.80	

* The Assessment shall run from the Trigger Date and shall be amortized over fifteen annual payments including principal and interest at 6% per annum. In addition, each year the City shall charge an Administrative Expense of \$50.00 per Parcel of Assessed Property to reimburse the City for its Administrative Expenses. In the event such fee for Administrative Expense is not sufficient to reimburse the City for its Administrative Expenses, the City shall deduct such expenses from the monies otherwise to be paid to Developer. The first year of the Assessment shall be levied in 2018, and shall be included in the 2018 tax bills.

** To be determined based on number of Parcels included as Assessed Property.

[Remainder of page left intentionally blank]

Section VI
TERMS OF THE ASSESSMENTS

A. Amount of Assessments

The Assessment for each Parcel is shown on the Assessment Roll, and no Assessment shall be changed except as authorized by this Service and Assessment Plan (including the Annual Service Plan Updates) and the PID Act. The Assessments shall not exceed the amount required to repay the Developer including interest and Collection Costs.

B. Reallocation of Assessments

1. Subdivision

Upon the subdivision of any Parcel, the Assessment for the Parcel prior to the subdivision shall be reallocated among the new subdivided Parcels according to the following formula:

$$A = B \times (C \pm D)$$

Where the terms have the following meanings:

A = the Assessment for each new subdivided Parcel

B = the Assessment for the Parcel prior to subdivision

C = the estimated number of units to be built on each newly subdivided Parcel

D = the sum of the estimated number of units to be built on all of the new subdivided Parcels

The calculation of the estimated number of units to be built on a Parcel shall be performed by the Administrator and confirmed by the City Council based on the information available regarding the use of the Parcel. The estimate as confirmed shall be conclusive. The number of units to be built on a Parcel may be estimated by net land area and reasonable density ratios.

The sum of the Assessments for all newly subdivided Parcels shall equal the Assessment for the Parcel prior to subdivision. The calculation shall be made separately for each newly subdivided Parcel. The reallocation of an Assessment for a Parcel may not exceed the Assessment prior to the reallocation and to the extent the reallocation would exceed such amount, it shall be prepaid by such amount by the party requesting the subdivision of the Parcels. Any reallocation pursuant to this section shall be reflected in an Annual Service Plan Update approved by the City Council.

2. Consolidation

Upon the consolidation of two or more Parcels, the Assessment for the consolidated Parcel shall be the sum of the Assessments for the Parcels prior to consolidation. The reallocation of an Assessment for a Parcel may not exceed the Assessment prior to the reallocation and to the extent the reallocation would exceed such amount, it shall be prepaid by such amount by the party requesting the consolidation of the Parcels. Reallocation pursuant to this section shall be reflected in an Annual Service Plan Update approved by the City Council.

C. Mandatory Prepayment of Assessments

1. If at any time the Assessment on a Parcel exceeds the Maximum Assessment per

Commercial Unit calculated for the Parcel as a result of any reallocation of an Assessment authorized by this Service and Assessment Plan and initiated by the owner of the Parcel, then such owner shall pay to the City prior to the recordation of the document subdividing the Parcel the amount calculated by the Administrator by which the Assessment for the Parcel exceeds the Maximum Assessment per Commercial Unit for the Parcel. The City shall not approve the recordation of a plat or other document subdividing a Parcel without a letter from the Administrator either (a) confirming that the Assessment for any new Parcel created by the subdivision will not exceed the Maximum Assessment per Unit for each Parcel, or (b) confirming the payment of the Assessments, plus all Prepayment Costs, as provided for herein.

2. If a Parcel subject to Assessments is transferred to a party that is exempt from the payment of the Assessment under applicable law, or if an owner causes a Parcel subject to Assessments to become Non-Benefited Property, the owner of such Parcel shall pay to the City the full amount of the Assessment on such Parcel, prior to any such transfer or act.
3. The payments required above shall be treated the same as any Assessment that is due and owing under the Act, the Assessment Ordinance, and this Service and Assessment Plan, including the same lien priority, penalties, procedures, and foreclosure specified by the Act.

D. Reduction of Assessments

1. If after all Authorized Improvements have been completed, the total Authorized Improvement Costs is less than the total Assessments, then the Assessments and Annual Installments for each Parcel shall be reduced by an equal percentage such that the sum of the resulting reduced Assessments and Annual Installments for all Parcels equals the amount required to repay the Authorized Improvement Costs and interest owed thereon, and Collection Costs. The Assessment for each Parcel shall be reduced by an equal percentage such that the sum of the resulting reduced monies owed Developer is equal to the outstanding principal amount of the Assessments.
2. If all the Authorized Improvements are not undertaken, resulting in the total amount owed Developer being less than the total amount of Assessments, then the Assessments and Annual Installments for each Parcel shall be appropriately reduced by the City Council to reflect only the amounts required to repay Developer, including interest and Collection Costs. The City Council may reduce the Assessments and the Annual Installments for each Parcel (i) in an amount that represents the Authorized Improvements provided for each Parcel, or (ii) by an equal percentage, if determined by the City Council to be the most fair and practical means of reducing the Assessments for each Parcel, such that the sum of the resulting reduced Assessments equals the amount required to repay the Developer, including interest and Collection Costs. The Assessment for each Parcel shall be reduced pro rata to the reduction in the Assessments for each Parcel such that the sum of the resulting reduced Assessments is equal to the outstanding principal amount owed Developer.

E. Payment of Assessments

1. Payment in Full

- (a) The Assessment for any Parcel may be paid in full at any time.
- (b) If an Annual Installment has been billed prior to payment in full of an Assessment, the Annual Installment shall be due and payable and shall be credited against the payment-in-full amount.
- (c) Upon payment in full of the Assessment, the City shall deposit the payment in accordance with the applicable governing document; whereupon, the Assessment shall be reduced to zero, and the owner's obligation to pay the Assessment and Annual Installments thereof shall automatically terminate.
- (d) At the option of the owner, the Assessment on any Parcel may be paid in part. Upon the payment of such amounts for a Parcel, the Assessment for the Parcel shall be reduced, the Assessment Roll shall be updated to reflect such partial payment, and the obligation to pay the Annual Installment for such Parcel shall be reduced to the extent the partial payment is made.

2. Payment in Annual Installments

The Act provides that an Assessment for a Parcel may be paid in full at any time. If not paid in full, the Act authorizes the City to collect interest and Collection Costs in Annual Installments. An Assessment for a Parcel that is not paid in full will be collected in Annual Installments each year in the amounts shown in the Assessment Roll, as updated as provided for herein, which include interest and Annual Collection Costs. Payment of the Annual Installments shall commence with tax bills mailed.

Each Assessment shall be paid with interest of no more than six percent per annum. The Assessment Roll sets forth for each year the Annual Installment for each Parcel based on an estimated interest rate of 6% and additional interest at the rate of 0.5% for administrative expenses. Furthermore, the Annual Installments may not exceed the amounts shown on the Assessment Roll.

F. Collection of Annual Installments

No less frequently than annually, the Administrator shall prepare, and the City Council shall approve, an Annual Service Plan Update to allow for the billing and collection of Annual Installments. Each Annual Service Plan Update shall include an updated Assessment Roll and a calculation of the Annual Installment for each Parcel. Annual Collection Costs shall be allocated among Parcels in proportion to the amount of the Annual Installments for the Parcels. Each Annual Installment shall be reduced by any credits applied, such as interest earnings on any account balances, and any other funds available to the City for such purpose. Annual Installments shall be collected by the City in the same manner and at the same time as ad valorem taxes and shall be subject to the same penalties, procedures, and foreclosure sale in case of delinquencies as are provided for ad valorem taxes of the City. The City Council may provide for other means of collecting the Annual Installments to the extent permitted under the PID Act. The Assessments shall have lien priority as specified in the Act.

Any sale of property for nonpayment of the Annual Installments shall be subject to the lien established for the remaining unpaid Annual Installments against such property and such property may again be sold at a judicial foreclosure sale if the purchaser thereof fails to make timely payment of the non-

delinquent Annual Installments against such property as they become due and payable.

Section VII THE ASSESSMENT ROLL

Appendix C identifies each Parcel within PID No. 1, the Benefited Property, the Assessed Property and Non-Benefitted Property. The Assessment Roll includes each Parcel of Assessed Property, the Assessment imposed on each Parcel, the Assessments, and the Annual Installments to be paid each year for each Parcel if the Assessment is not paid in full for any Parcel. The Assessment on each Parcel is based on the number of units expected to be built on each Parcel, and the Assessment per unit results, as explained herein.

Each Parcel of Assessed Property has been evaluated by the City Council (based on the developable area, proposed Owner Association Property and Public Property, best and highest use of the property, and other development factors deemed relevant by the City Council) to determine, the number of dwelling units anticipated to be developed on a Parcel. Each dwelling unit is then multiplied by the Assessment per unit set forth in Table V-B of this Service and Assessment Plan, and the total of such amounts for all dwelling units for the Parcel shall constitute the "Assessment" for the Parcel as set forth on the Assessment Roll. The Assessment Roll shall be updated upon the preparation of each Annual Service Plan Update to reflect, for each Parcel, subdivisions, consolidations, prepayments, and reductions authorized by this Service and Assessment Plan.

The Administrator shall prepare, and the City Council shall review and approve, annual updates to the Assessment Roll as the Annual Service Plan Update to reflect the following matters, together with any other changes helpful to the Administrator or the City and permitted by the Act: (i) the identification of each Parcel as Benefited Property, Assessed Property, and NonBenefitted Property; (ii) the Assessment for each Parcel, including any adjustments authorized by this Service and Assessment Plan or in the Act; (iii) the Assessment for each Parcel, including any adjustments authorized by this Service and Assessment Plan or in the Act; (iv) the Annual Installment for the Parcel •for the year (if the Assessment is payable in installments); and (v) payments of the Assessment, if any, as provided by Section VI.0 of this Service and Assessment Plan.

Section VIII MISCELLANEOUS PROVISIONS

A. Administrative Review

An owner of an Assessed Parcel claiming that a calculation error has been made in the Assessment Roll, including the calculation of the Annual Installment, shall send a written notice describing the error to the City not later than thirty (30) days after the date any amount which is alleged to be incorrect is due prior to seeking any other remedy. The Administrator shall promptly review the notice, and if necessary, meet with the Assessed Parcel owner, consider written and oral evidence regarding the alleged error and decide whether, in fact, such a calculation error occurred.

If the Administrator determines that a calculation error has been made and the Assessment Roll should be modified or changed in favor of the Assessed Parcel owner, such change or modification shall be presented to the City Council for approval, to the extent permitted by the Act. A cash refund may not be made for any amount previously paid by the Assessed Parcel owner (except for the final year during which the Annual Installment shall be collected or if it is determined there are sufficient funds to meet the expenses of the PID No. 1 for the current year), but an adjustment may be made in the amount of the

Annual Installment to be paid in the following year. The decision of the Administrator regarding a calculation error relating to the Assessment Roll may be appealed to the City Council. Any amendments made to the Assessment Roll pursuant to calculation errors shall be made pursuant to the PID Act.

The decision of the Administrator, or if such decision is appealed to the City Council, the decision of the City Council, shall be conclusive as long as there is a reasonable basis for such determination. This procedure shall be exclusive and its exhaustion by any property owner shall be a condition precedent to any other appeal or legal action by such owner.

B. Termination of Assessments

Each Assessment shall be extinguished on the date the Assessment is paid in full, including unpaid Annual Installments and Delinquent Collection Costs, if any. After the extinguishment of an Assessment and the collection of any delinquent Annual Installments and Delinquent Collection Costs, the City shall provide the owner of the affected Parcel a recordable "Notice of Cancellation of PID No. 1 Assessment."

C. Amendments

The City Council reserves the right to the extent permitted by the Act to amend this Service and Assessment Plan without notice under the Act and without notice to property owners of Parcels: (i) to correct mistakes and clerical errors; (ii) to clarify ambiguities; and (iii) to provide procedures for the collection and enforcement of Assessments, Collection Costs, and other charges imposed by the Service and Assessment Plan.

D. Administration and Interpretation of Provisions

The City Council shall administer PID No. 1, this Service and Assessment Plan, and all Annual Service Plan Updates consistent with the PID Act, and shall make all interpretations and determinations related to the application of this Service and Assessment Plan unless stated otherwise herein, such determination shall be conclusive.

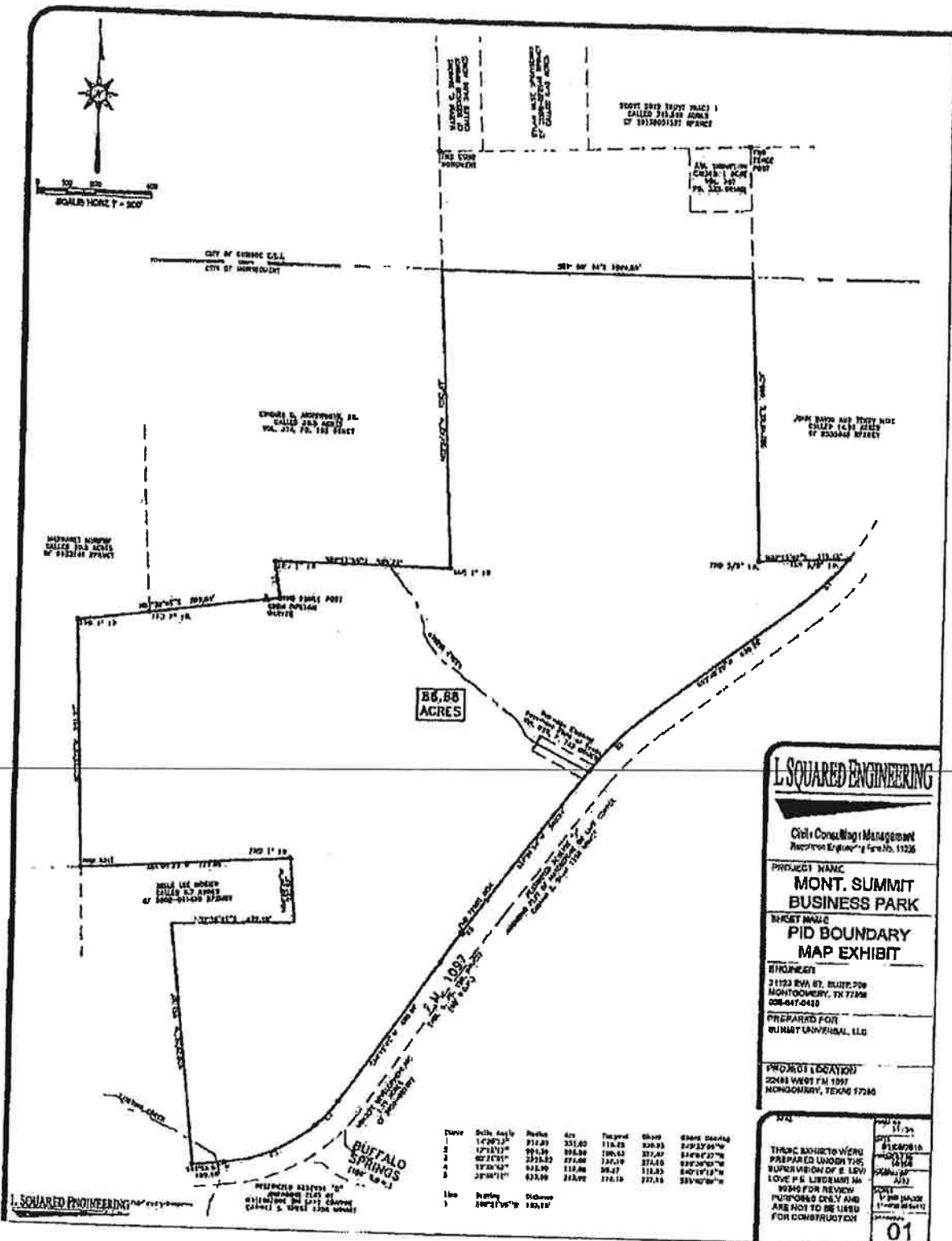
E. Severability

If any provision, section, subsection, sentence, clause or phrase of this Service and Assessment Plan or the application of same to an Assessed Parcel or any person or set of circumstances is for any reason held to be unconstitutional, void or invalid, the validity of the remaining portions of this Service and Assessment Plan or the application to other persons or sets of circumstances shall not be affected thereby, it being the intent of the City Council in adopting this Service and Assessment Plan that no part hereof or provision or regulation contained herein shall become inoperative or fail by reason of any unconstitutionality, voidness or invalidity of any other part hereof, and all provisions of this Service and Assessment Plan are declared to be severable for that purpose.

If any provision of this Service and Assessment Plan is determined by a court to be unenforceable, the unenforceable provision shall be deleted from this Service and Assessment Plan and the unenforceable provision shall, to the extent possible, be rewritten to be enforceable and to give effect to the intent of the City.

Appendix A

MAP OF PID No. 1



L SQUARED ENGINEERING

L SQUARED ENGINEERING

Civil Consulting Management
Professional Engineering License No. 11226

PROJECT NAME
**MONT. SUMMIT
BUSINESS PARK**

MARKET NAME
**PID BOUNDARY
MAP EXHIBIT**

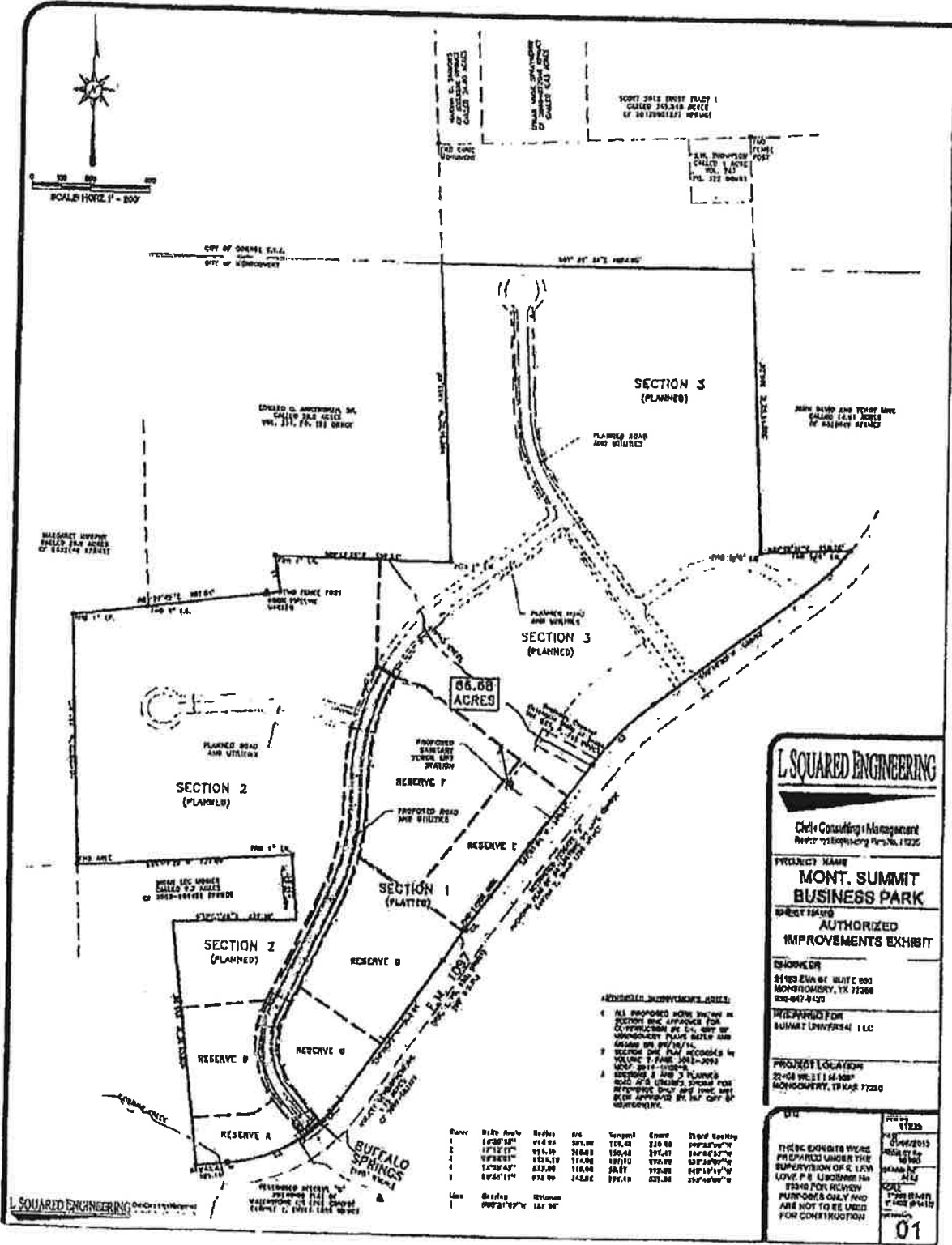
ENGINEER
31123 BVA ST. BLVD. 208
MONTGOMERY, TX 77198
282-047-0420

PREPARED FOR
SUMMIT UNIVERSAL, LLC

PROJECT LOCATION
22488 WEST FM 1997
MONTGOMERY, TEXAS 77286

DATE: 11-25
SCALE: AS SHOWN
THIS EXHIBIT WAS PREPARED UNDER THE SUPERVISION OF E. LEVI LOVE, P.E. LICENSED PROFESSIONAL ENGINEER FOR REVIEW PURPOSES ONLY AND ARE NOT TO BE USED FOR CONSTRUCTION

Curve	Bearing	Angle	Radius	Arc	Tangent	Chord	Chord Bearing
1	172°07'		212.83	331.80	114.45	328.33	S79°21'56"W
2	171°11'		281.59	394.89	130.53	372.29	S78°02'37"W
3	80°21'51"		232.82	274.00	120.19	317.63	S83°00'00"W
4	172°07'		212.83	331.80	114.45	328.33	S79°21'56"W
5	25°00'10"		633.89	113.92	172.19	327.55	S85°42'00"W



L. SQUARED ENGINEERING

Civil • Consulting • Management
 Professional Engineering No. 11222

PROJECT NAME
MONT. SUMMIT BUSINESS PARK

SHEET NAME
AUTHORIZED IMPROVEMENTS EXHIBIT

DRAWN BY
 21123 EWA BY: WJTC:BOO
 MONROEVILLE, TX 77356
 282-847-9420

PREPARED FOR
 SUMMIT UNIVERSITY, LLC

PROJECT LOCATION
 21-68 WEST 114-300th
 MONROEVILLE, TEXAS 77356

DATE
 05/20/2015

THESE EXHIBITS WERE PREPARED UNDER THE SUPERVISION OF R. L. JENKINS, P.E., LICENSED PROFESSIONAL ENGINEER, STATE OF TEXAS. THESE EXHIBITS ARE FOR REVIEW PURPOSES ONLY AND ARE NOT TO BE USED FOR CONSTRUCTION.

01

- REVISIONS:**
1. ALL PROPOSED WORK SHOWN IN EXHIBIT IS SUBJECT TO THE APPROVAL OF THE CITY OF DENVER AND THE CITY OF MONROEVILLE. THESE EXHIBITS ARE SUBJECT TO THE APPROVAL OF THE CITY OF DENVER AND THE CITY OF MONROEVILLE.
 2. SECTION ONE PLAN REVISIONS BY WJTC:BOO 05/14/2015.
 3. SECTIONS TWO AND THREE PLANNED ROAD AND UTILITIES, SUBSTATION AND RESERVE ARE SUBJECT TO THE APPROVAL OF THE CITY OF DENVER AND THE CITY OF MONROEVILLE.

Curve	Beg. Ang.	End Ang.	Area	Length	Chord	Chord Bearing
1	163°00'00"	0°00'00"	371.00	115.00	310.00	092°30'00"W
2	171°12'00"	0°00'00"	218.00	150.00	295.00	086°30'00"W
3	0°00'00"	0°00'00"	174.00	100.00	200.00	087°00'00"W
4	172°00'00"	0°00'00"	118.00	200.00	175.00	091°15'00"W
5	0°00'00"	0°00'00"	65.00	145.00	135.00	25°00'00"W

Appendix B

ESTIMATED COSTS OF AUTHORIZED IMPROVEMENTS

On-Site Improvements

The on-site roadway improvements include

- Summit Park Drive - The project consists of construction approximately 4,900 linear feet of 24' wide concrete streets (8" concrete) with 6' shoulders (6" concrete) on each side within a dedicated street right-of-way inside PID No. 1.

The onsite water distribution system improvements consist of approximately 8,400 linear feet of 12" water line within the proposed street right-of-way and easements within PID No. 1. The water lines will connect to an existing City of Montgomery main along the south side of FM 1097.

The onsite storm sewer collection systems include approximately 4,900 linear feet of ditch cut in within the proposed street right-of-way inside PID No.1 to direct flow to the existing creeks within the development.

The onsite wastewater collection system improvements consist of approximately 5,000 linear feet of 8" wastewater lines within the proposed street right-of-way inside PID No. 1. A portion of these lines will connect to a proposed lift station, using approximately 650' linear feet of 4" force main to pump the wastewater to a proposed sanitary main. All proposed lines will ultimately connect to an existing main on the south side of FM 1097.

Off-site Improvements

The offsite roadway improvements include a portion of FM 1097 being re-striped for a turn lane to allow safe access into the proposed Summit Park Drive.

Montgomery PID # 1

Phase 1 costs	Estimated Phase 2 Costs	Estimated Phase 3 Costs	Project Total
Earthwork & Mobilization			
Legal & Insurance, Bond	\$29,200	\$36,500	
Engr, legal, surveying, clearing & dirtwork	\$95,181.36	\$166,850	
Randy Roan Const. Roadway, Water & sewer lines, lift station	\$793,178	\$1,605,393	
Sitework & landscape			
Hydromulching			
Platting & Surveying			
Utility work			
New Devl. Costs: project mgt., Gas line, power lines, Geotech, Communication lines, Boring, SWPP, inspection	\$73,405	\$144,699	
	Contingencies		
Total Phase 1	990,964.36	\$1,953,442	\$ 4,998,761.12

Appendix C

ASSESSMENT ROLL

<u>CURRENT PLATTED RESERVES:</u>	<u>ASSESSMENT</u>
Reserve A – 1.238 Acres	\$51,583.33
Reserve B – 2.262 Acres	\$94,249.98
Reserve C – 2.139 Acres	\$89,124.99
Reserve D – 4.221 Acres	\$175,874.97
Reserve E – 2.863 Acres	\$119,291.65
Reserve F – 5.346 Acres	\$222,749.96

Montgomery Summit Business Park, a subdivision of 21.227 acres recorded in Cabinet Z, Sheet Nos. 3061-3062 File No. 2014-095246 of the Map Records of Montgomery County.

Future platted reserves within the PID, which reserves will encompass approximately 56 acres. Assessment will run from Trigger Date on each platted reserve and be calculated based upon the acreage within the reserve.

2021 Annual Installment for Triggered Parcels

Quick Ref	Bdg #	Property ID	Address Line 1	Zip Code	Legal Description	Acres	PID Rate	Triggered Acres	City Admin. Fee	2021 Annual Installment
R450269	B-1	7271-00-00200	15349 SUMMIT BUSINESS PARK DR	77356	S727100 - Montgomery Summit Business Park, BLOCK 2, RES B (BLDG B-1 SUITE 101-104), ACRES 0.5655	0.5655	2426.06	0.5655	\$50.00	\$2,476.06
R450271	D	7271-00-00400	22394 FM 1097 W	77356	S727100 - Montgomery Summit Business Park, BLOCK 1, RES D, ACRES 4.221	4.221	18108.60	4.2210	\$50.00	\$18,158.60
R450273	F-1	7271-00-00600	15498 SUMMIT BUSINESS PARK DR	77356	S727100 - Montgomery Summit Business Park, BLOCK 1, RES F (BLDG F-1, SUITE 101-104), ACRES 0.696	0.696	2985.92	0.6960	\$50.00	\$3,035.92
R471619	F-2	7271-00-00601	15522 SUMMIT BUSINESS PARK DR	77356	S727100 - Montgomery Summit Business Park, BLOCK 1, RES F (BLDG F-2, SUITE 201-204), ACRES 0.696	0.696	2985.92	0.6960	\$50.00	\$3,035.92

R471620	F-3	7271-00-00602	15584 SUMMIT BUSINESS PARK DR	77356	S727100 - Montgomery Summit Business Park, BLOCK 1, RES F (BLDG F-3, SUITE 301- 303), ACRES 0.517	0.517	2217.99	0.5170	\$50.00	\$2,267.99
R471621	F-4	7271-00-00603	15636 SUMMIT BUSINESS PARK DR	77356	S727100 - Montgomery Summit Business Park, BLOCK 1, RES F (BLDG F-4, SUITE 401- 403), ACRES 0.517	0.517	2217.99	0.5170	\$50.00	\$2,267.99
R471622	F-5	7271-00-00604	15514 SUMMIT BUSINESS PARK DR	77356	S727100 - Montgomery Summit Business Park, BLOCK 1, RES F (BLDG F-5, SUITE 501- 503), ACRES 0.517	0.517	2217.99	0.5170	\$50.00	\$2,267.99
R471623	F-6	7271-00-00605	15556 SUMMIT BUSINESS PARK DR	77356	S727100 - Montgomery Summit Business Park, BLOCK 1, RES F (BLDG F-6, SUITE 601- 603), ACRES 0.517	0.517	2217.99	0.5170	\$50.00	\$2,267.99
R471625	F-8	7271-00-00607	15618 SUMMIT BUSINESS PARK DR	77356	S727100 - Montgomery Summit Business Park, BLOCK 1, RES F (BLDG F-8, SUITE 801- 804), ACRES 0.696	0.696	2985.92	0.696	\$50.00	\$3,035.92
						18.092	57569.12	8.9425	\$450.00	\$38,814.40
									Total 2021 Assessm ent:	\$38,814.40