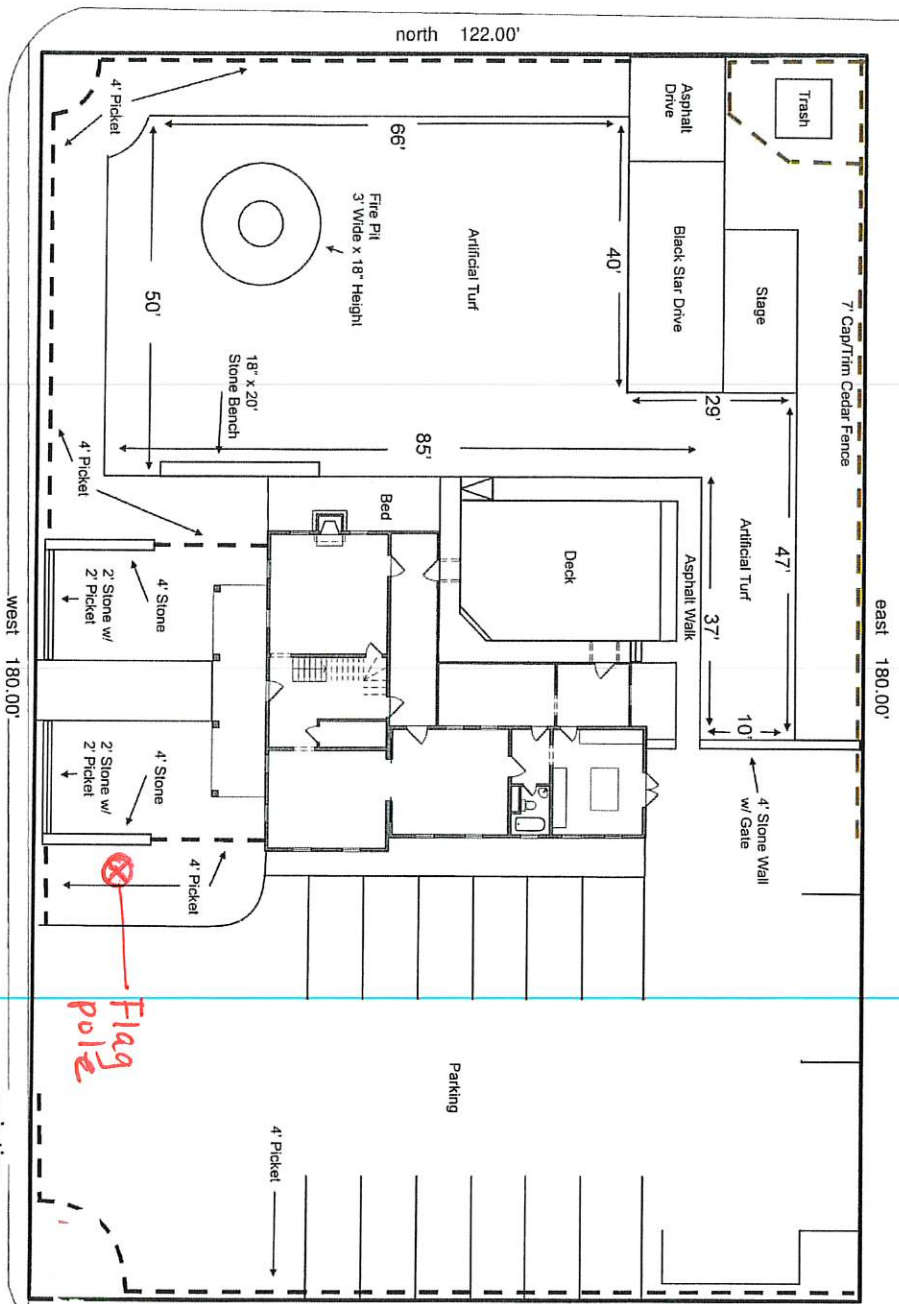


pond street

north 122.00'



east 180.00'

west 180.00'

caroline street

south 122.00'

liberty street



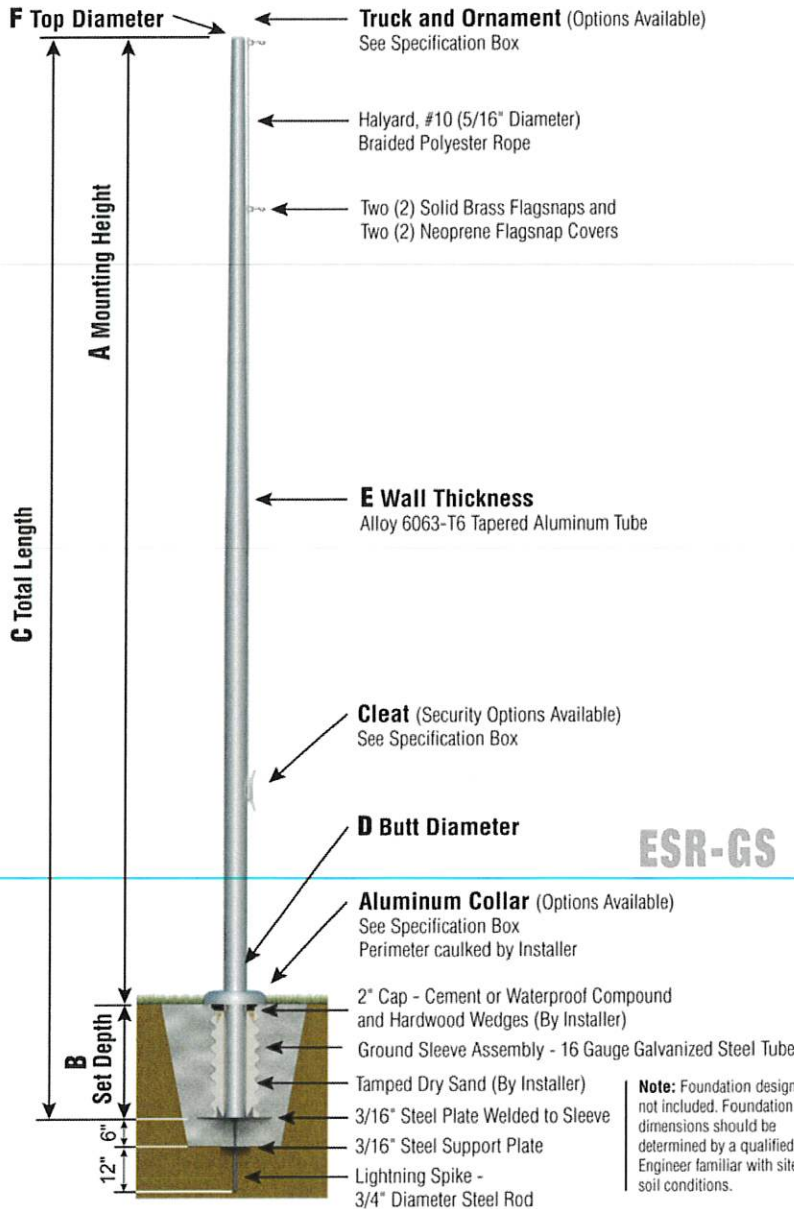
existing
site plan
scale: 1/16" = 1'-0"

Flag pole



Continental Series

ESR - External Single Revolving
Rope Halyard
Ground Set Installation

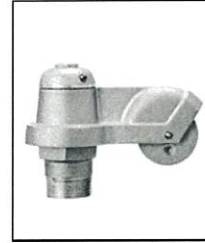


ESR-GS

Note: Foundation design not included. Foundation dimensions should be determined by a qualified Engineer familiar with site soil conditions.

ESR35C52

- SAT



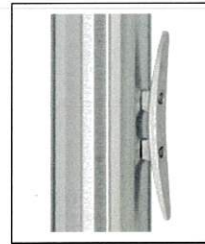
TRK-9610

In-Line Truck
Single Revolving

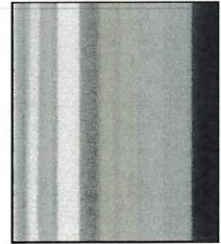


BAL-0512-GLD-ES

HD Gold Anodized
Aluminum Ball



**CLA-9090-SAT | 8' from bottom
Cleat Only**



SAT

Satin Finish

Specifications	
A. Mounting Height:	35'
B. Set Depth:	3'-6"
C. Total Length:	38'-6"
D. Butt Diameter:	5"
E. Wall Thickness:	.156"
F. Top Diameter:	3"
Flagpole Sections:	2
Shaft Weight:	128 lbs.
Hardware Weight:	10 lbs.
Ground Sleeve Weight:	33 lbs.
* Max Flag Size:	6' x 10'
* Max Wind Speed w/Nylon Flag:	73 mph
* Max Wind Speed No Flag:	87 mph
* Wind Speed Specifications from ANSI/NAAMM FP 1001-07	

Customer Name: Gracepoint Homes	
Dealer: Elite Flags and Poles Inc	Qty: 1
Project: Sales Office	Location: Montgomery, TX
Notes:	

ESR35C52G-T0F-O2M-SK-FSA

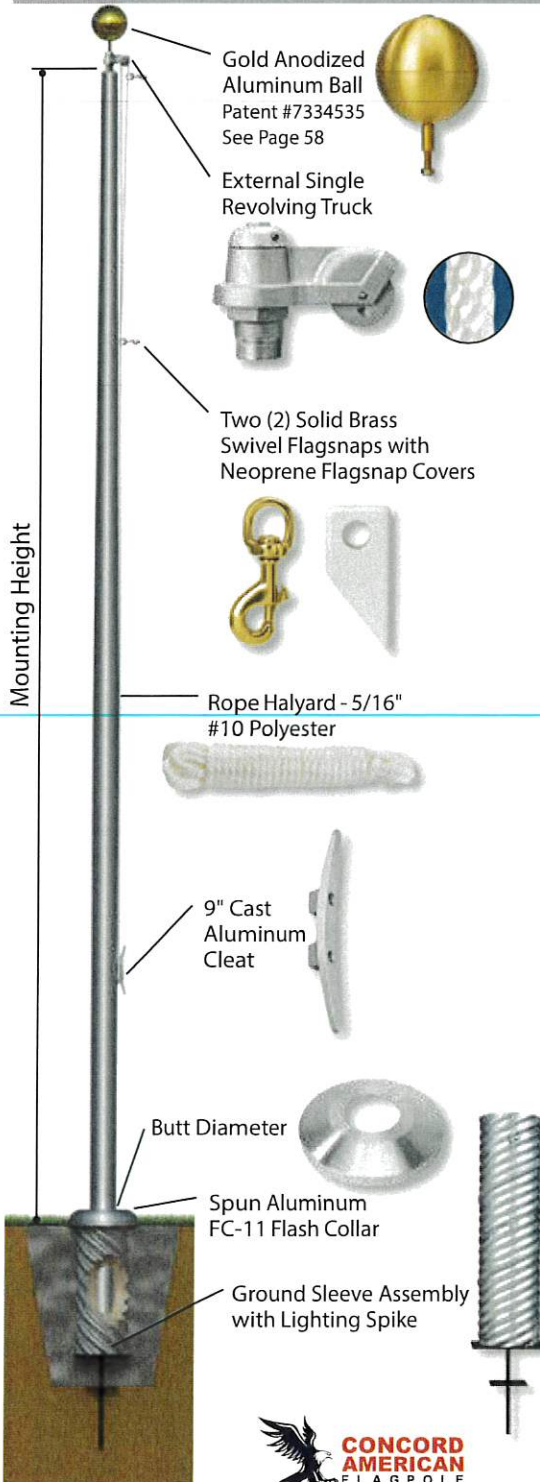
CAFP_010819_1pg

Continental Series - ESR

External Single Revolving - Rope Halyard

The **Continental Series** from Concord American Flagpole combines heavy-duty aluminum flagpoles in **20' to 80'** mounting heights with the highest quality hardware available to the industry today. These flagpoles meet the most stringent architectural standards and are certain to enhance the landscape of any business or industrial property.

STANDARD FLAGPOLE ACCESSORIES - 4" to 8" BUTT DIAMETERS



Shoe Base Designs for Surface Mount Installations are available with Continental Series - ESR Flagpoles. See Page 14.

- 4"-5" Butt Diameters Add **\$246**
- 6"-8" Butt Diameters Add **\$304**
- 10" Butt Diameters Add **\$608**
- 12" Butt Diameters Add **\$1,209**

Standard Specifications

- Patented, Heavy-Duty Gold Anodized Aluminum Ball
- Cast Aluminum Revolving Truck with Dual Stainless Steel Bearing Assemblies, Aluminum Pulley and Aluminum Spindle
- Complete External Halyard Assembly
 - Rope Halyard - 5/16" #10 Polyester
 - Two (2) Solid Brass Swivel Flagnaps
 - Two (2) Neoprene Flagnap Covers
- 9" Cast Aluminum Cleat
- Spun Aluminum FC-11 Flash Collar
- Galvanized 16-Gauge Corrugated Steel Ground Sleeve with Steel Grounding Spike

Standard Upgrades - 10" and 12" Butt Diameters

- Heavy-Duty Truck with Dual SEALED Bearing Assemblies
- Rope Halyard - Heavy-Duty 3/8" #12 Polyester
- Two (2) Heavy-Duty Brass Flagnaps with Covers
- Heavy-Duty 5/8" Ball Stem
- Heavy-Duty Cast Aluminum Collar

CONTINENTAL SERIES - ESR OPTIONS

Double Revolving System (Double Truck, Extra Cleat and Complete Double Halyard Assembly) - Specify EDR (External Double Revolving). See Page 63 Add **\$67**

Heavy-Duty Truck with Dual SEALED Bearings for 4"-8" Butt Diameter Flagpoles. See Page 63 Add **\$140**

Cast Aluminum, SEALED Bearings, Gold Powder Coated Ball Truck. Replaces Standard Truck and Ball Combination - See Page 65.

8" Diameter Ball/Truck Add **\$164**

Cleat Cover Box (Specify Cylinder Lock or Padlock). See Page 77 Add **\$158**

Cleat Cover Box with 5' Halyard Cover (Specify Cylinder Lock or Padlock) - See Page 77. 5"-6" Flagpole Butt Diameters...Add **\$305**
7"-12" Flagpole Butt Diameters..Add **\$364**

Cast Aluminum FC-11 Collar In Lieu of Spun Collar - See Page 81. 5"-7" Butt Diameters Add **\$67**
8"-12" Butt Diameters Add **\$201**

External Halyard Beacon - Heavy-Duty
Rope Halyard - Revolving - Spindle Truck



Flagpole Lighting Options are available for all Continental Series Flagpoles - See Pages 84-91.

