

Downtown Sanitary Sewer Rehabilitation City of Montgomery

This proposal is submitted pursuant to and in accordance with that certain Professional Services Agreement dated May 25, 2021, by and between Ward, Getz & Associates, PLLC and the City of Montgomery (the "City").

WGA understands the City plans to rehabilitate existing sewer lines located on Prairie Street, McCown Street, John A Butler Street and Caroline Street in the downtown area. The Sanitary Sewer Rehabilitation includes point repairs, cured-in-place pipe (CIPP) lining, and other miscellaneous repairs.

SCOPE OF WORK

- *Preliminary & Design Phase Services*
 - *WGA will complete the conceptual design including boots on the ground review of the existing conditions.*
 - *WGA will prepare exhibits, repair tables, and specifications, and will prepare final opinions of probable cost for the work and advertise for bids for construction.*
 - *Design changes initiated by the Client after the design is complete may result in a request for additional authorization.*

- *Construction Administration*
 - *Coordinate advertising for bids, hold a pre-bid conference, answer questions from bidders, hold bid opening, prepare bid tabulation, and prepare recommendation of award.*
 - *Prepare construction contracts and coordinate execution of the same.*
 - *Issue notice to proceed and hold pre-construction meeting.*
 - *Review of construction submittals and RFIs.*
 - *Preparation of pay estimates, change orders, and other associated construction documents.*
 - *General oversight and coordination of construction contract.*
 -

- *Field Project Representation*
 - *Onsite inspection by a Field Project Representative for approximately 12 hours per week (including travel time) for the duration of the projected contract period of performance (90 days).*
 - *Onsite inspection by the project team throughout the duration of the project to attend periodic site visits, final walkthrough inspections, etc.*



CONSULTING ENGINEERS

- *Additional Services*
 - o *WGA will coordinate with the client, residents, property owners and/or contractor any services deemed necessary to complete the project that was not a part of the original scope of work.*
 - o *WGA will coordinate with the contractor to ensure that the City Council and Community is aware of the construction status and impact.*
 - o *Construction services over 20% of original contract period of performance.*
- *Video Review*
 - o *WGA will review all post rehabilitation videos, photos, and testing results to ensure the repairs were completed per the specifications.*
- *Reimbursable Expenses.*
 - o *Any material expenses incurred as a part of this project including shipping, printing services, construction materials testing, and advertising fees.*

ENGINEERING COST

The cost to perform the scope of services described above is as follows:

Preliminary & Design Phase -	\$5,000	(Time and Materials)
Construction Administration -	\$12,000	(Time and Materials)
Field Project Representation -	\$9,000	(Time and Materials)
Video Review & Reimbursable Expenses -	\$3,000	(Time and Materials)

WGA requests City Council’s authorization to proceed with the preparation of the design plans for the Downtown Sanitary Sewer Rehabilitation on a time and materials basis, as described above.

SCHEDULE

Authorization to Proceed	1	calendar days*
Design	60	calendar days
Bidding	30	calendar days
Contracts	30	calendar days
Construction	90	calendar days
TOTAL DURATION	211	calendar days

*If approved, the effective start date is the following business day from the date of acceptance.

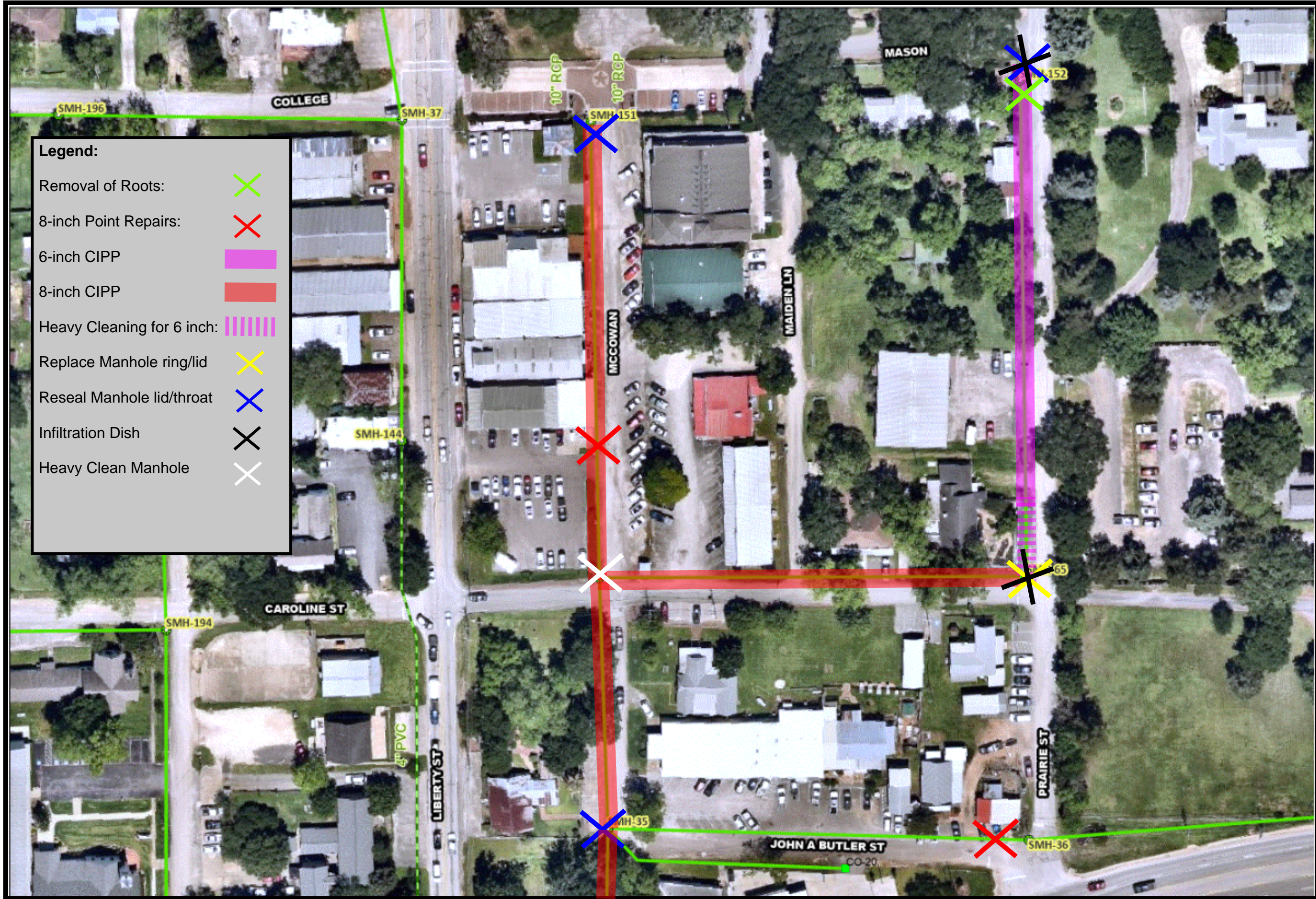


Preliminary Cost Estimate
FOR
Downtown Sanitary Sewer Rehabilitation
City of Montgomery
 July 8, 2022

<u>ITEM</u>	<u>Description</u>	<u>QUANTITY</u>	<u>UNIT</u>	<u>UNIT COST</u>	<u>ITEM TOTAL</u>
1	Move-In and Start-Up	1	LS	\$ 10,000	\$ 10,000
2	Removal of Roots/Fixed Obstructions	1	EA	660	1,000
3	8-inch Point Repairs (Standard 8 ft)	2	EA	6,000	12,000
4	Additional Linear Footage for 8-Inch Point Repair	2	LF	240	500
5	6- inch CIPP	755	LF	55	42,000
6	8- inch CIPP	841	LF	55	46,000
7	Heavy Cleaning for 6-inch	25	LF	50	1,000
8	Replace Manhole Ring and Lid	1	EA	1,300	1,000
9	Reseal Manhole Lid and Throat	3	EA	1,300	4,000
10	Insert Infiltration Dish	2	EA	500	1,000
11	Heavy Clean Manhole	1	EA	1,000	1,000
12	Service Lead Reconnection	6	EA	75	500
13	Traffic Control	1	LS	7,500	8,000
14	Pollution Prevention	1	LS	\$ 5,000	\$ 5,000
				Subtotal	\$ 133,000
				Contingencies (15%)	20,000
				Engineering	28,000
				Reimbursable Expenses	1,000
				Total Construction Cost	\$ 182,000

Notes:

- (1) All values rounded up to the nearest thousand.
- (2) This estimate is based on my best judgement as a design professional familiar with the construction industry. We cannot and do not guarantee that bids will not vary from this cost estimate.
- (3) This includes advertising fees and other miscellaneous reimbursable costs.



Legend:

Removal of Roots:	
8-inch Point Repairs:	
6-inch CIPP	
8-inch CIPP	
Heavy Cleaning for 6 inch:	
Replace Manhole ring/lid	
Reseal Manhole lid/throat	
Infiltration Dish	
Heavy Clean Manhole	

