



Lone Star Parkway 12” Waterline Extension (Tri-Pointe)

City of Montgomery

This proposal is submitted pursuant to and in accordance with that certain Professional Services Agreement dated May 25, 2021, by and between Ward, Getz & Associates, LLP (“WGA”) and the City of Montgomery (the “City”).

WGA understands the City plans to extend the waterline west along Lone Star Parkway. The waterline extension totals approximately 2,460 LF.

SCOPE OF WORK

- *Preliminary & Design Phase*
 - *WGA will create preliminary site layout and coordinate with the City for approval. This phase will include internal/ external project kickoff meetings and the establishment of the design and schedule.*
 - *WGA will develop drawings and specifications for the successful construction of the waterline extension along Lone Star Parkway.*
 - *Design changes initiated by the Client after the design is complete may result in a request for additional authorization.*
 - *Obtain approvals from TCEQ and Montgomery County.*

- *Construction Administration*
 - *Coordinate advertising for bids, hold a pre-bid conference, answer questions from bidders, hold bid opening, prepare bid tabulation, and prepare recommendation of award.*
 - *Prepare construction contracts and coordinate execution of the same.*
 - *Issue notice to proceed and hold pre-construction meeting.*
 - *Review of construction submittals and RFIs.*
 - *Preparation of pay estimates, change orders, and other associated construction documents.*
 - *General oversight and coordination of construction contract.*

- *Field Project Representation*
 - *Onsite inspection by a Field Project Representative for approximately 10 hours per week (including travel time) for the duration of the projected contract period of performance (45 days).*
 - *Onsite inspection by the project team throughout the duration of the project to attend periodic site visits, final walkthrough inspections, etc.*

- *Additional Services and Reimbursable Expenses*
 - *Includes surveying, construction staking, geotechnical investigation, construction materials testing, advertising expenses, and other reimbursable expenses.*
 - *Survey cost may be paid directly by developer and completed with the overall site survey. If this is the case, the survey will not be billed to the job.*
 - *Construction services over 20% of original contract period of performance.*



ENGINEERING COST

The cost to perform the scope of services described above is as follows:

| | | |
|---|----------|----------------------|
| Preliminary and Design Phase - | \$37,000 | (Lump Sum) |
| Construction Administration - | \$23,000 | (Lump Sum) |
| Field Project Representation - | \$18,000 | (Time and Materials) |
| Additional Services and Reimbursable Expenses - | \$17,000 | (Time and Materials) |

WGA requests City Council’s authorization to proceed with the preparation of the design plans for the Lone Star Parkway 12” Waterline Extension (Tri-Pointe) on a lump sum and time and materials, as described above.

SCHEDULE

| | | |
|--------------------------|------------|----------------------|
| Authorization to Proceed | 1 | calendar days* |
| Survey | 30 | calendar days |
| Design | 120 | calendar days |
| Bidding | 30 | calendar days |
| Contracts | 30 | calendar days |
| Construction | 45 | calendar days |
| TOTAL DURATION | 256 | calendar days |

* If approved, the effective start date is the following business day from the date of acceptance.



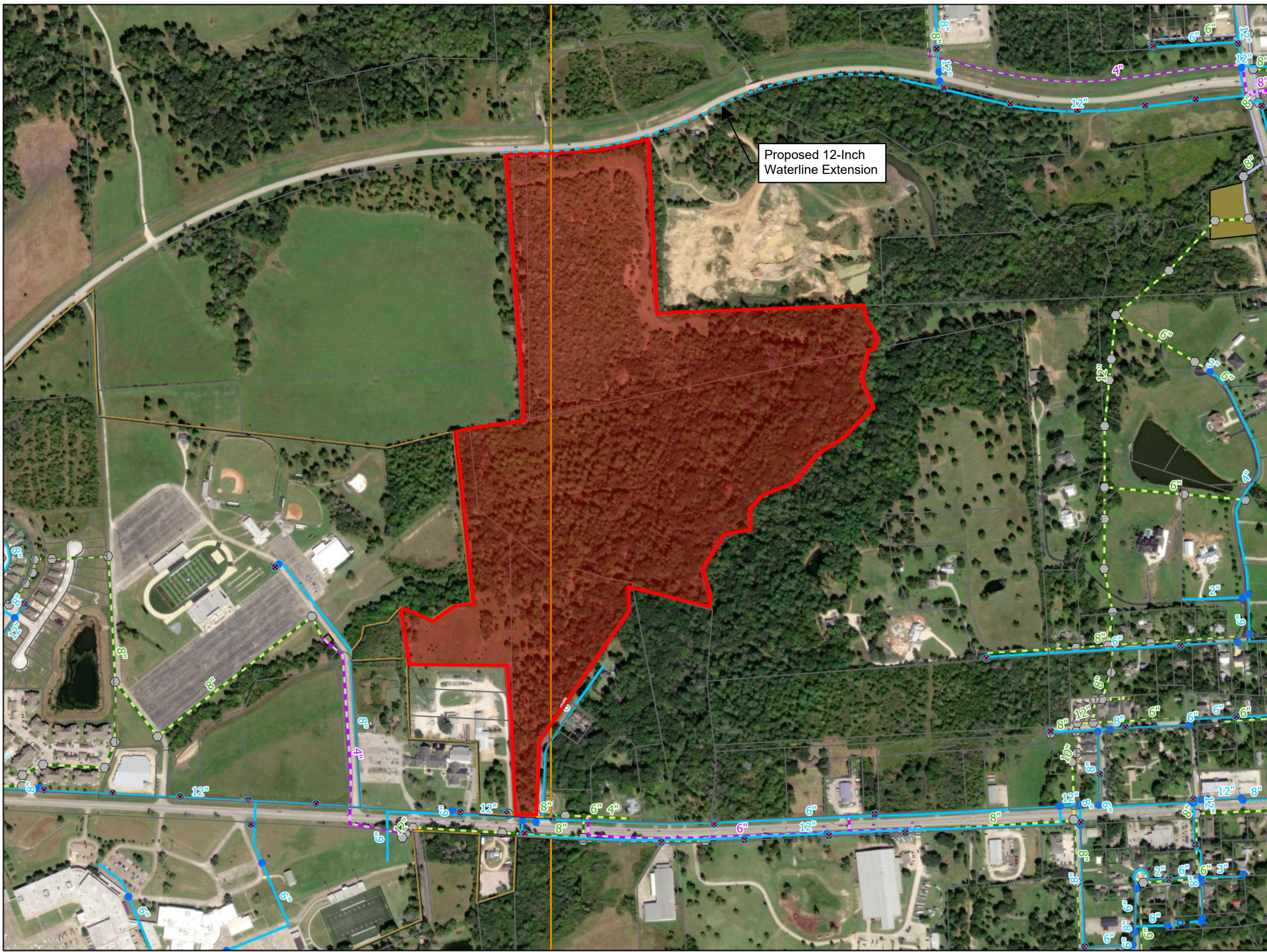
Preliminary Cost Estimate
Offsite Public Water Improvements
Cheatham-Stewart Tract

9/5/2024

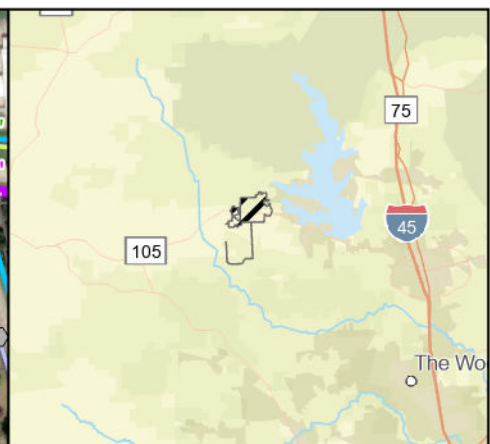
| Item No. | Description | Quantity | Unit | Unit Price | Cost |
|----------------|--|----------|------|--|-------------------|
| General | | | | | |
| 1 | Mobilization, Bonds, and Insurance | 1 | LS | \$ 20,000 | \$ 20,000 |
| 2 | Construction Staking | 1 | LS | 8,000 | 8,000 |
| 3 | Trench Safety System | 2,460 | LF | 1 | 2,460 |
| 4 | SWPPP | 1 | LS | 7,500 | 7,500 |
| 5 | Traffic Control Plan | 1 | LS | 10,000 | 10,000 |
| 6 | Site Restoration | 1 | LS | 7,500 | 7,500 |
| Water | | | | | |
| 7 | 12-Inch C900 PVC Waterline | 2,460 | LF | 65 | 159,900 |
| 8 | 12-Inch PVC Waterline (trenchless with 20" Steel Casing) | 140 | LF | 350 | 49,000 |
| 9 | 12-Inch Gate Valve | 5 | EA | 3,000 | 15,000 |
| 10 | 12-Inch Wet Connect | 1 | EA | 4,500 | 4,500 |
| 11 | Flush Valve | 5 | EA | 5,000 | 25,000 |
| 12 | 2-Inch Blow Off Valve and Box | 1 | EA | 2,000 | 2,000 |
| 13 | 12" Plug and Clamp | 1 | EA | \$ 1,000 | \$ 1,000 |
| | | | | Construction Subtotal | \$ 312,000 |
| | | | | Contingencies (15%) | \$ 47,000 |
| | | | | Preliminary and Design Phase | \$ 37,000 |
| | | | | Construction Administration | \$ 23,000 |
| | | | | Field Project Representation | \$ 18,000 |
| | | | | Additional Services and Reimbursable Expenses | \$ 17,000 |
| | | | | Total | \$ 454,000 |

Notes:

- 1 All values rounded up to the nearest thousand.
- 2 This estimate is based on my best judgement as a design professional familiar with the construction industry. We cannot and do not guarantee that bids will not vary from this cost estimate.
- 3 This is not a proposal for engineering services but an estimate for planning purposes.



Proposed 12-Inch
Waterline Extension



- Legend**
- █ Cheatham-Stewart Tract
 - █ City ETJ
 - City Limits
 - Tax Parcel
- Water Infrastructure**
- Hydrant
 - Water Main Valves
 - Water Main
 - Water Plant Facility
- Sanitary Sewer Infrastructure**
- Sanitary Sewer Manhole
 - Sanitary Sewer CCTV
 - Sanitary Sewer Gravity Main
 - Sanitary Sewer Lateral
 - Sanitary Sewer Pressurized Main
 - █ Sanitary Sewer Water Treatment Plant

Cheatham-Stewart Tract

Feasibility Study



Disclaimer: This product is offered for graphical purposes only and may not be suitable for legal, engineering, or surveying purposes. The information shown on this exhibit represents the approximate location of property, municipal boundaries or facilities.

