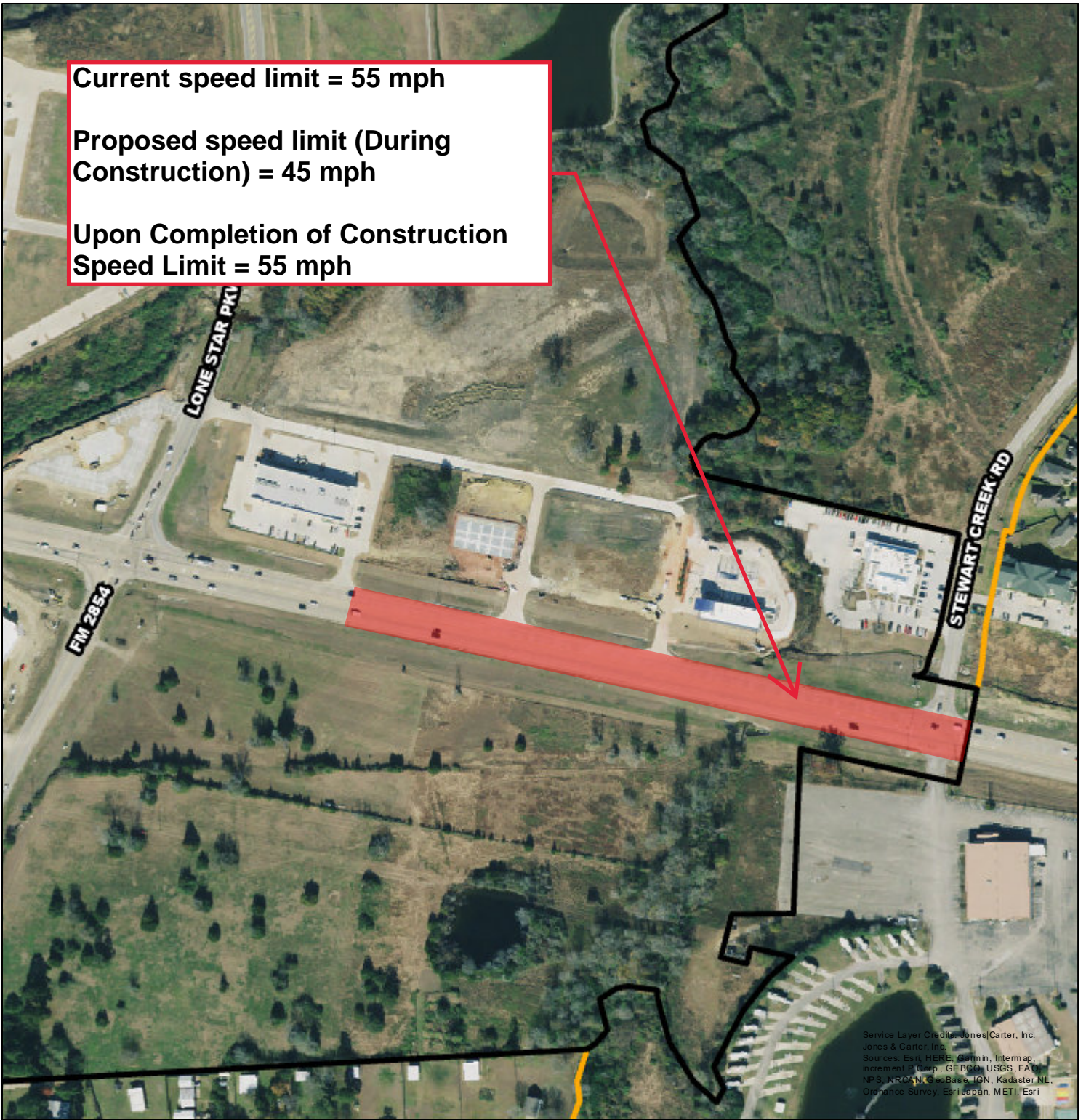


TxDOT SH105 / Eva Street Speed Zone Request

Current speed limit = 55 mph

Proposed speed limit (During Construction) = 45 mph



Upon Completion of Construction Speed Limit = 55 mph



Service Layer Credits: Jones|Carter, Inc.
Jones & Carter, Inc.
Sources: Esri, HERE, Garmin, Intermap,
increment P Corp., GEBCO, USGS, FAO,
NPS, NRCAN, GeoBase, IGN, Kadaster NL,
Ordnance Survey, Esri Japan, METI, Esri

1 inch equals 376 feet



- LEGEND**
-  City Limit
 -  City ETJ
 - Road Label



Date: 6/16/2021