

- Legend**
- City Limits
 - Water Infrastructure
 - Water Well
 - Water Plant Boundary
 - Water Main
 - Proposed Capital Projects
 - Abner Lane Waterline Extension
 - CB Stewart and Buffalo Springs Waterline Extension
 - Downtown Waterline Replacement PH II
 - East Lone Star Parkway Waterline Extension
 - Houston Street Waterline Replacement
 - McCown and Caroline Waterline Replacement
 - Old Plantersville's Road Waterline Extension
 - Old Plantersville Road Waterline Replacement (SH 105 to Womack Cemetery)
 - Pond Street Waterline Replacement
 - SH 105 Waterline Extension
 - West Lone Star Parkway Waterline Extension

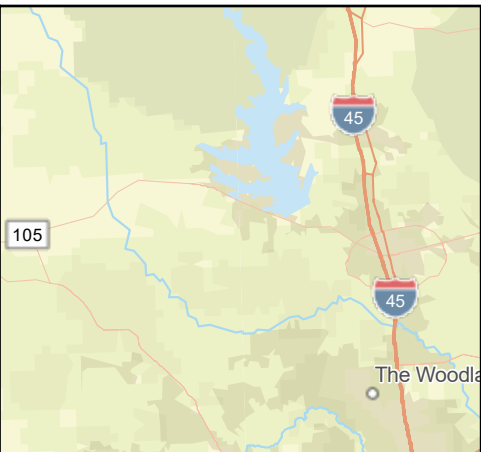
Exhibit No. 1

Water Impact Fee Overall Project Map



Disclaimer: This product is offered for graphical purposes only and may not be suitable for legal, engineering, or surveying purposes. The information shown on this exhibit represents the approximate location of property, municipal boundaries or facilities.





Legend

- City Limits
- Water Infrastructure**
 - Water Main Valve
 - Blowoff Valve
 - Hydrant
 - Water Well
- Water Plant Boundary
- Water Main
- Proposed Capital Projects**
 - Abner Lane Waterline Extension

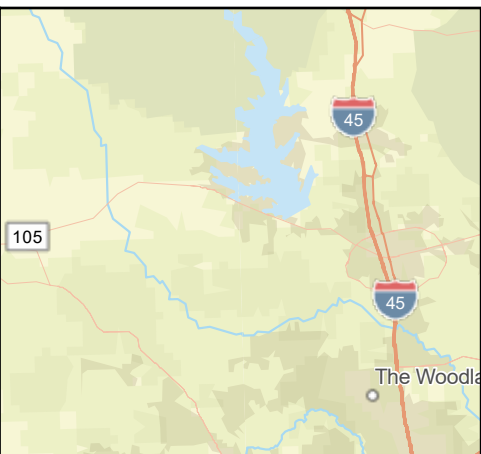
Exhibit No. 1A

Abner Lane Waterline Extension



Disclaimer: This product is offered for graphical purposes only and may not be suitable for legal, engineering, or surveying purposes. The information shown on this exhibit represents the approximate location of property, municipal boundaries or facilities.





Legend

- City Limits
- Water Infrastructure
 - Water Main Valve
 - Blowoff Valve
 - Hydrant
 - Water Well
- Water Plant Boundary
- Water Main
- Proposed Capital Projects
 - CB Stewart and Buffalo Springs Waterline Extension

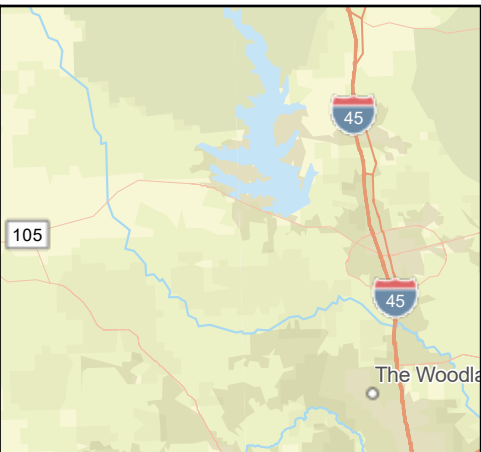
Exhibit No. 1B

CB Stewart and Buffalo Springs Waterline Extension



Disclaimer: This product is offered for graphical purposes only and may not be suitable for legal, engineering, or surveying purposes. The information shown on this exhibit represents the approximate location of property, municipal boundaries or facilities.





Legend

- City Limits
- Water Infrastructure**
 - Water Main Valve
 - Blowoff Valve
 - Hydrant
 - Water Well
- Water Plant Boundary
- Water Main
- Proposed Capital Projects**
 - Downtown Waterline Replacement PH II

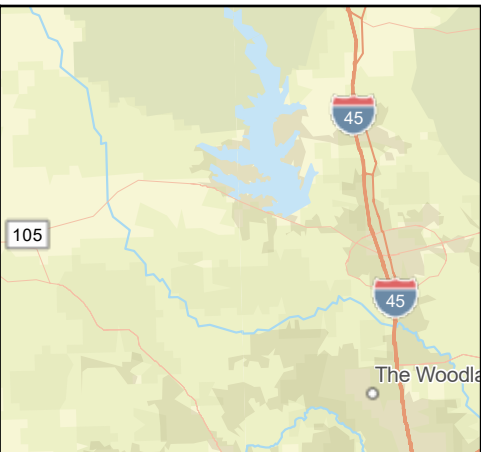
Exhibit No. 1C

Downtown Waterline Replacement PH II



Disclaimer: This product is offered for graphical purposes only and may not be suitable for legal, engineering, or surveying purposes. The information shown on this exhibit represents the approximate location of property, municipal boundaries or facilities.





Legend

- City Limits
- Water Infrastructure
 - Water Main Valve
 - Blowoff Valve
 - Hydrant
 - Water Well
- Water Plant Boundary
- Water Main

Proposed Capital Projects

- East Lone Star Parkway Waterline Extension
- Currently in construction with MISD CTE & Ag Complex Development

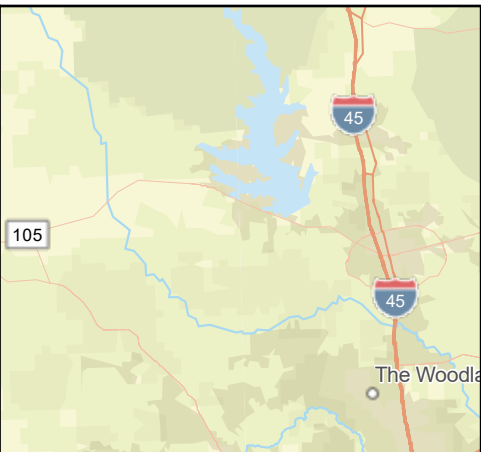
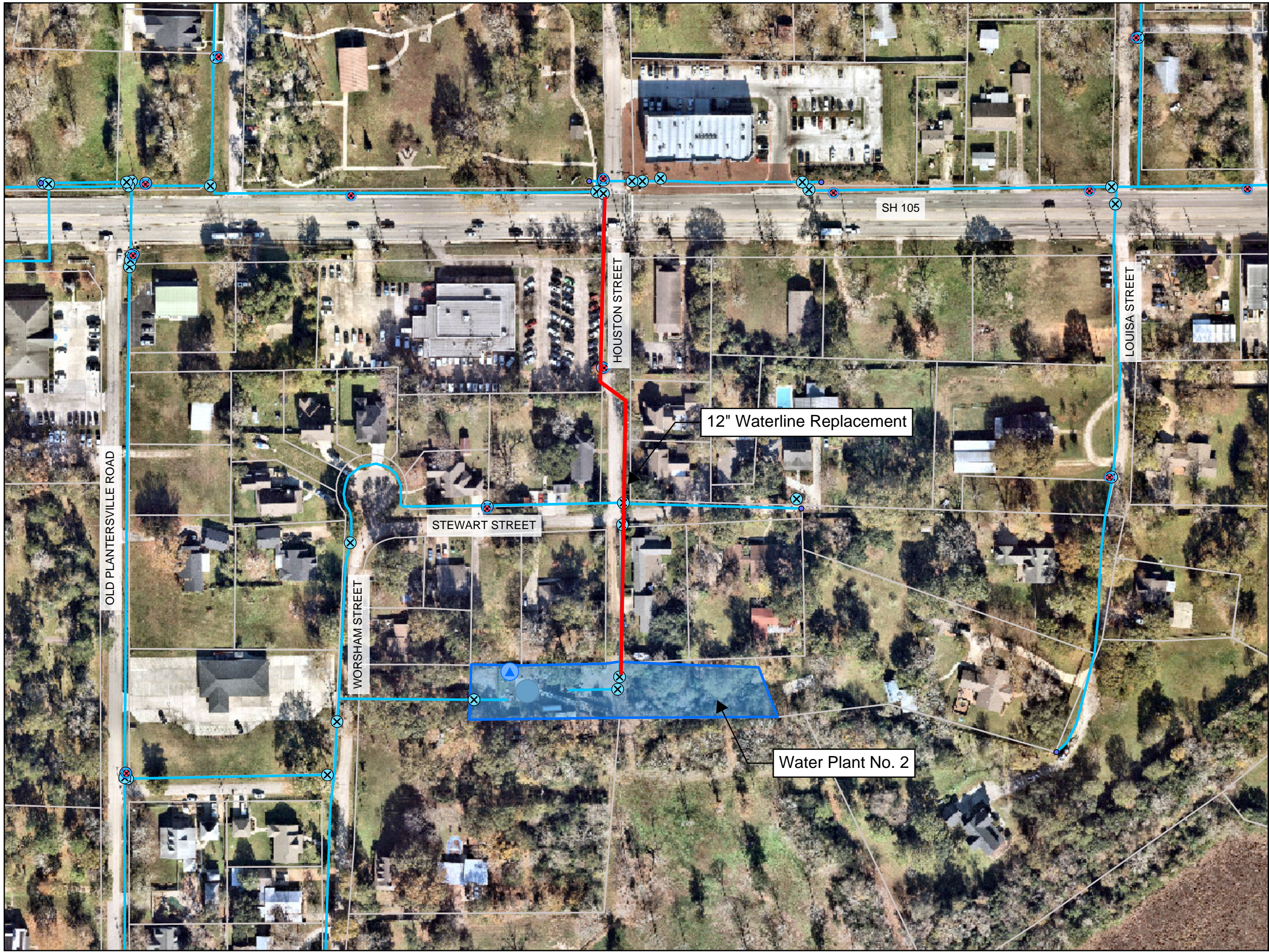
Exhibit No. 1D

East Lone Star Parkway Waterline Extension

CITY OF MONTGOMERY
TEXAS EST 1837
BIRTHPLACE OF THE TEXAS FLAG

Disclaimer: This product is offered for graphical purposes only and may not be suitable for legal, engineering, or surveying purposes. The information shown on this exhibit represents the approximate location of property, municipal boundaries or facilities.





Legend

- City Limits
- Water Infrastructure**
 - Water Main Valve
 - Blowoff Valve
 - Hydrant
 - Water Well
 - Water Plant Boundary
 - Water Main
- Proposed Capital Projects**
 - Houston Street Waterline Replacement

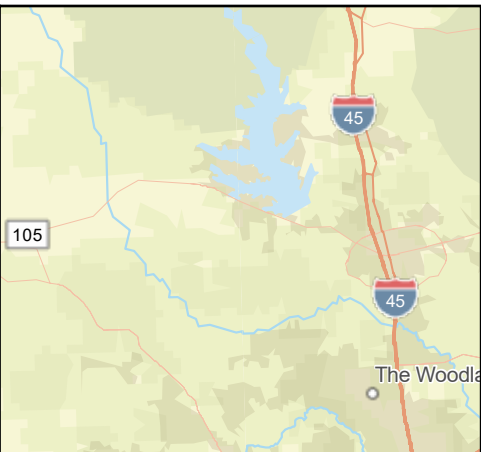
Exhibit No. 1E

Houston Street Waterline Replacement



Disclaimer: This product is offered for graphical purposes only and may not be suitable for legal, engineering, or surveying purposes. The information shown on this exhibit represents the approximate location of property, municipal boundaries or facilities.





Legend

- City Limits
- Water Infrastructure**
 - Water Main Valve
 - Blowoff Valve
 - Hydrant
 - Water Well
- Water Plant Boundary
- Water Main
- Proposed Capital Projects**
 - Old Plantersville Waterline Extension
 - Currently in construction with Briarley Development

Exhibit No. 1F

Old Plantersville Road Waterline Extension

CITY OF

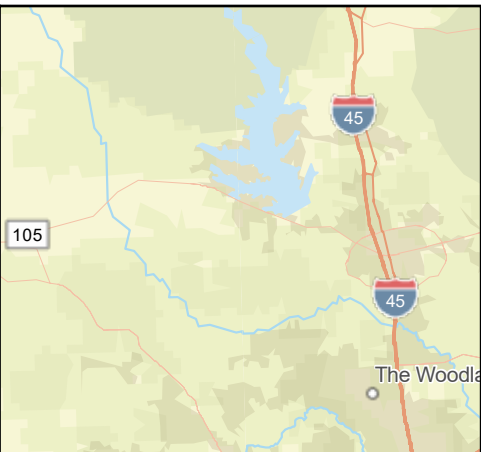
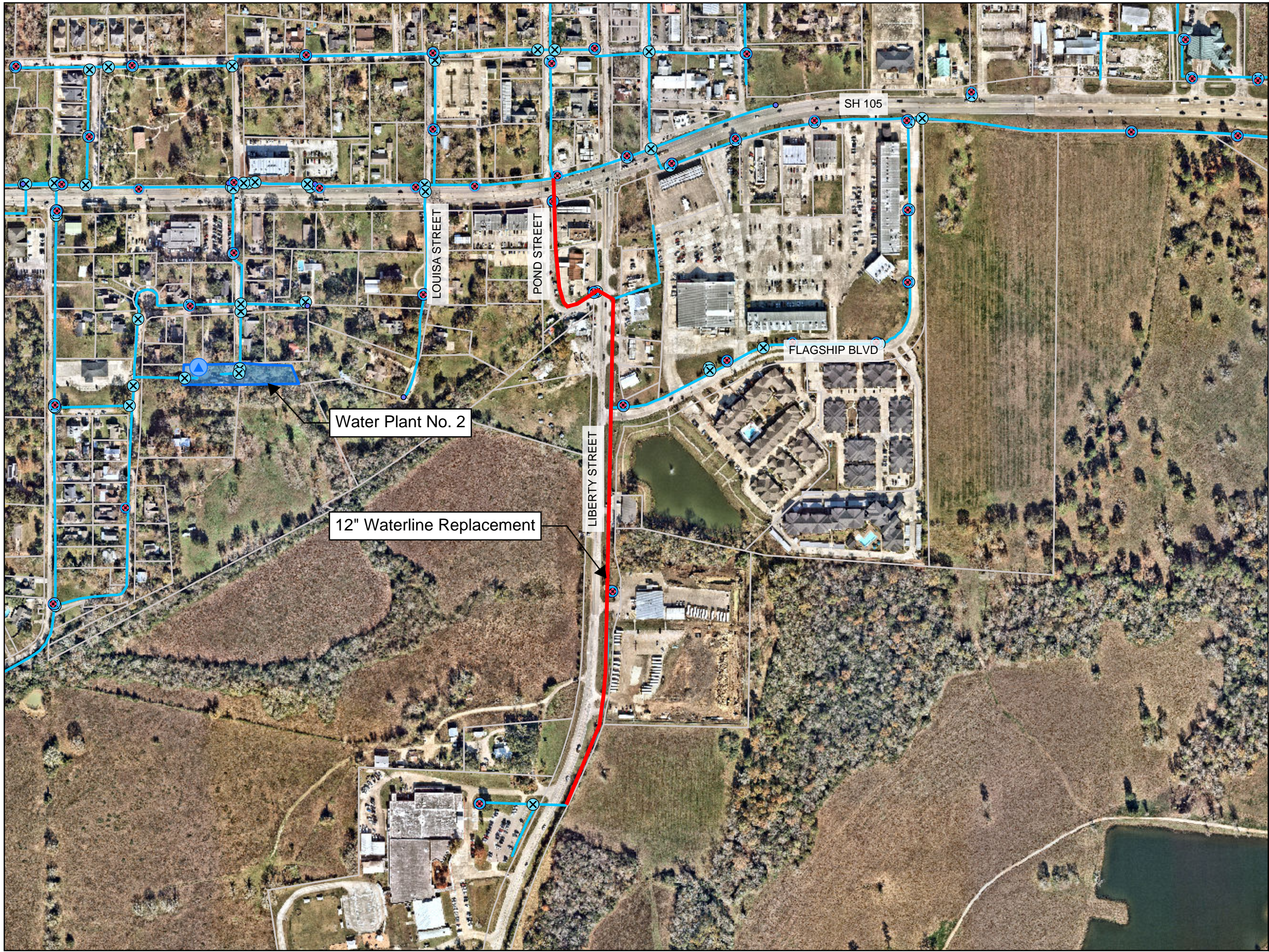
MONTGOMERY

TEXAS EST 1837

BIRTHPLACE OF THE TEXAS FLAG

Disclaimer: This product is offered for graphical purposes only and may not be suitable for legal, engineering, or surveying purposes. The information shown on this exhibit represents the approximate location of property, municipal boundaries or facilities.





Legend

- City Limits

Water Infrastructure

- Water Main Valve
- Blowoff Valve
- Hydrant
- Water Well
- Water Plant Boundary
- Water Main

Proposed Capital Projects

- Pond Street Waterline Replacement

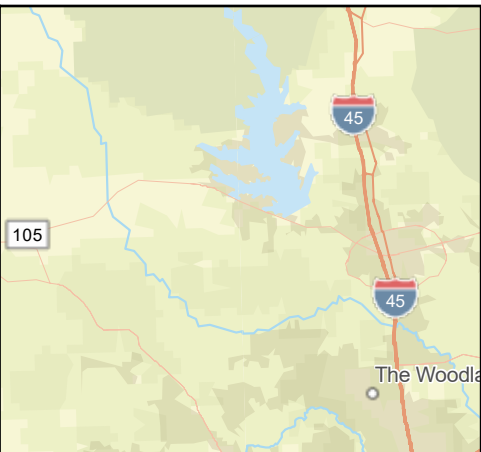
Exhibit No. 1G

Pond Street Waterline Replacement



Disclaimer: This product is offered for graphical purposes only and may not be suitable for legal, engineering, or surveying purposes. The information shown on this exhibit represents the approximate location of property, municipal boundaries or facilities.





Legend

- City Limits
- Water Infrastructure**
 - Water Main Valve
 - Blowoff Valve
 - Hydrant
 - Water Well
- Water Plant Boundary
- Water Main
- Proposed Capital Projects**
 - SH 105 Waterline Extension

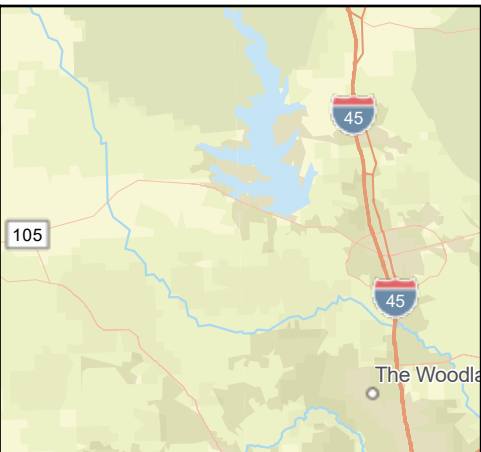
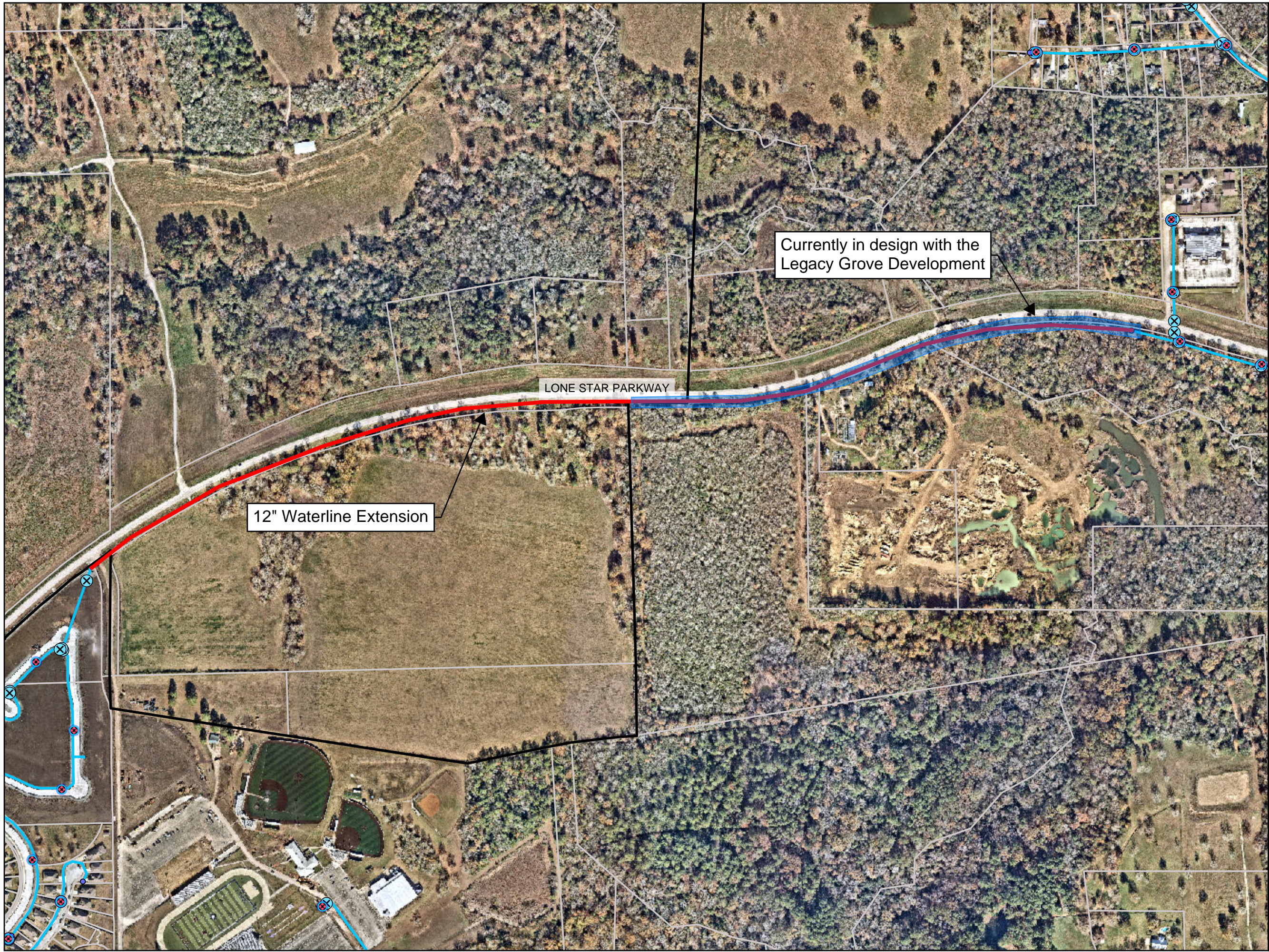
Exhibit No. 1H

SH 105 Waterline Extension



Disclaimer: This product is offered for graphical purposes only and may not be suitable for legal, engineering, or surveying purposes. The information shown on this exhibit represents the approximate location of property, municipal boundaries or facilities.





Legend

- City Limits
- Water Infrastructure**
 - Water Main Valve
 - Blowoff Valve
 - Hydrant
 - Water Well
- Water Plant Boundary
- Water Main
- Proposed Capital Projects**
 - West Lone Star Parkway Waterline Extension
 - Currently in design with the Legacy Grove Development

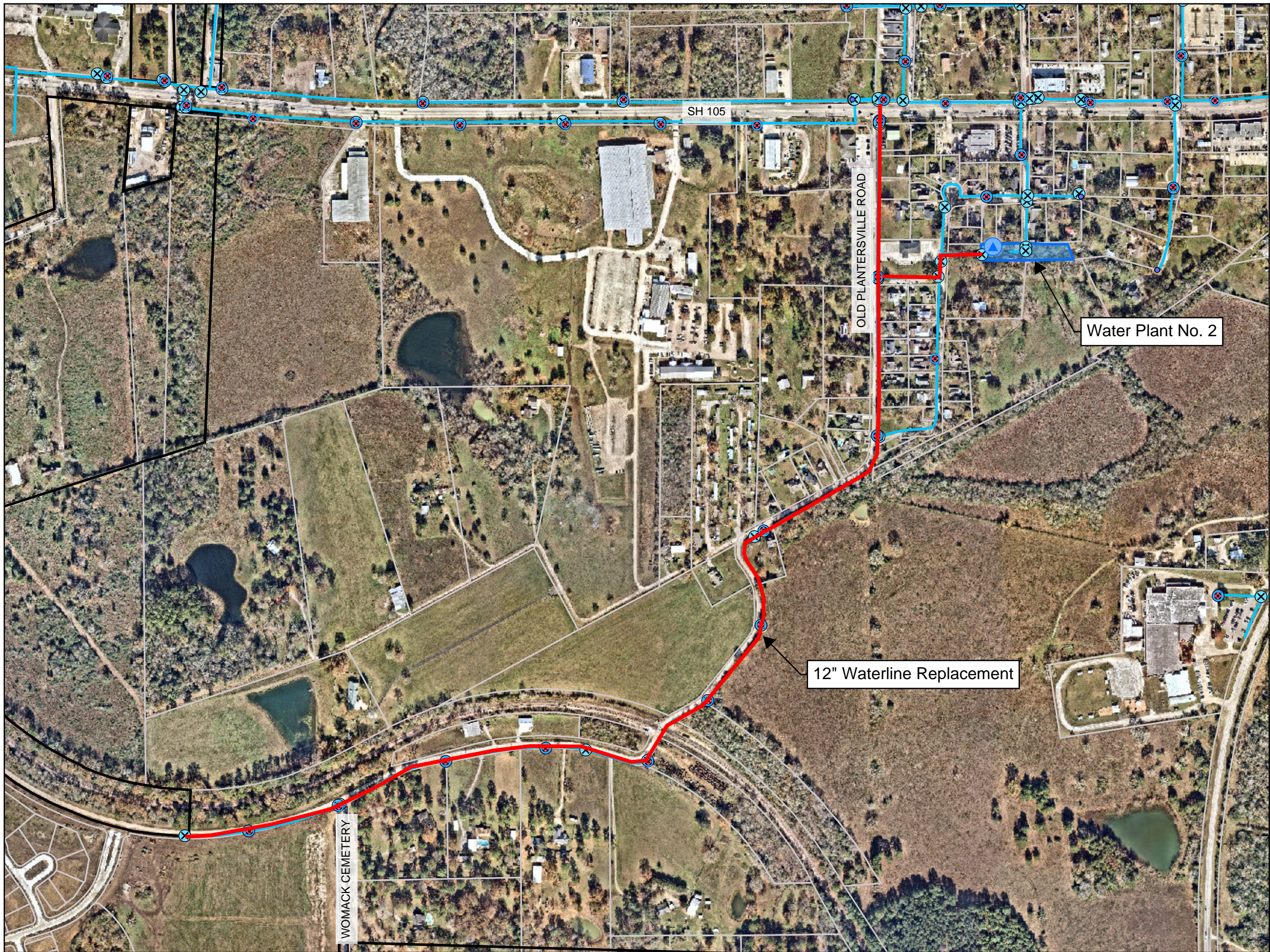
Exhibit No. 11

West Lone Star Parkway
Waterline Extension



Disclaimer: This product is offered for graphical purposes only and may not be suitable for legal, engineering, or surveying purposes. The information shown on this exhibit represents the approximate location of property, municipal boundaries or facilities.

WGA



Legend

- City Limits

Water Infrastructure

- Water Main Valve
- Blowoff Valve
- Hydrant
- Water Well
- Water Plant Boundary
- Water Main

Proposed Capital Projects

- Old Plantersville Road Waterline Replacement (SH 105 to Womack Cemetery)

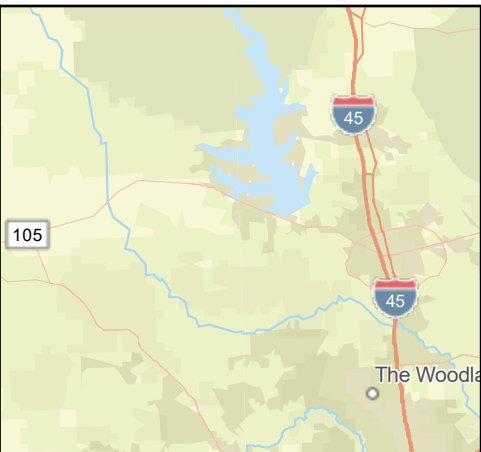
Exhibit No. 1J

Old Plantersville Road Waterline Replacement (SH 105 to Womack Cemetery)



Disclaimer: This product is offered for graphical purposes only and may not be suitable for legal, engineering, or surveying purposes. The information shown on this exhibit represents the approximate location of property, municipal boundaries or facilities.





Legend

- City Limits
- Water Infrastructure**
 - Water Main Valve
 - Blowoff Valve
 - Hydrant
 - Water Well
- Water Plant Boundary
- Water Main
- Proposed Capital Projects**
 - McCown and Caroline Waterline Replacement

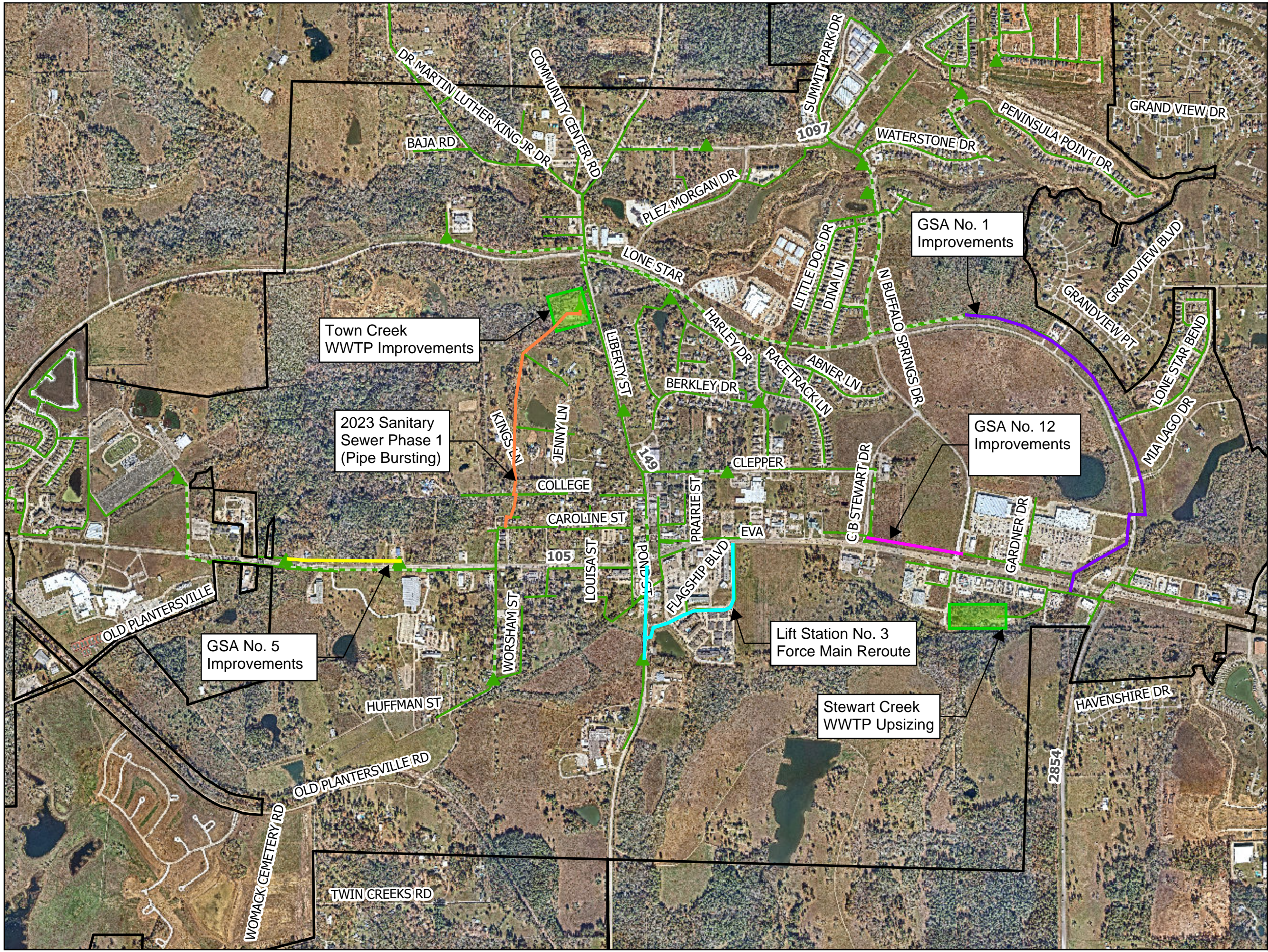
Exhibit No. 1K

McCown and Caroline Waterline Replacement



Disclaimer: This product is offered for graphical purposes only and may not be suitable for legal, engineering, or surveying purposes. The information shown on this exhibit represents the approximate location of property, municipal boundaries or facilities.





Legend

- City Limits
- Sanitary Sewer Infrastructure
 - Lift Station
 - Sanitary Sewer Manhole
 - Sanitary Sewer Gravity Main
 - Sanitary Sewer Force Main
 - Treatment Plant Boundary
- Proposed Capital Projects
 - GSA No. 1 Improvements
 - GSA No. 12 Improvements
 - 2023 Sanitary Sewer Phase 1
 - GSA No. 5 Improvements
 - Lift Station No. 3 Force Main Reroute

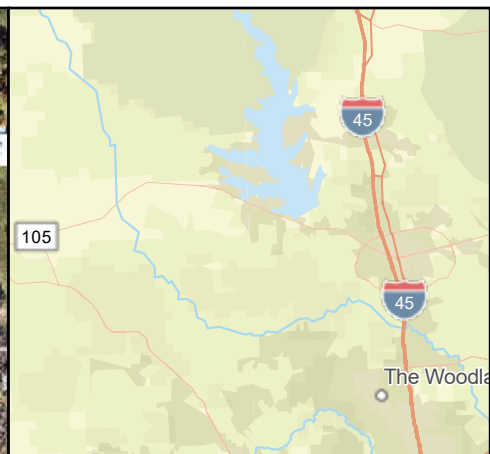
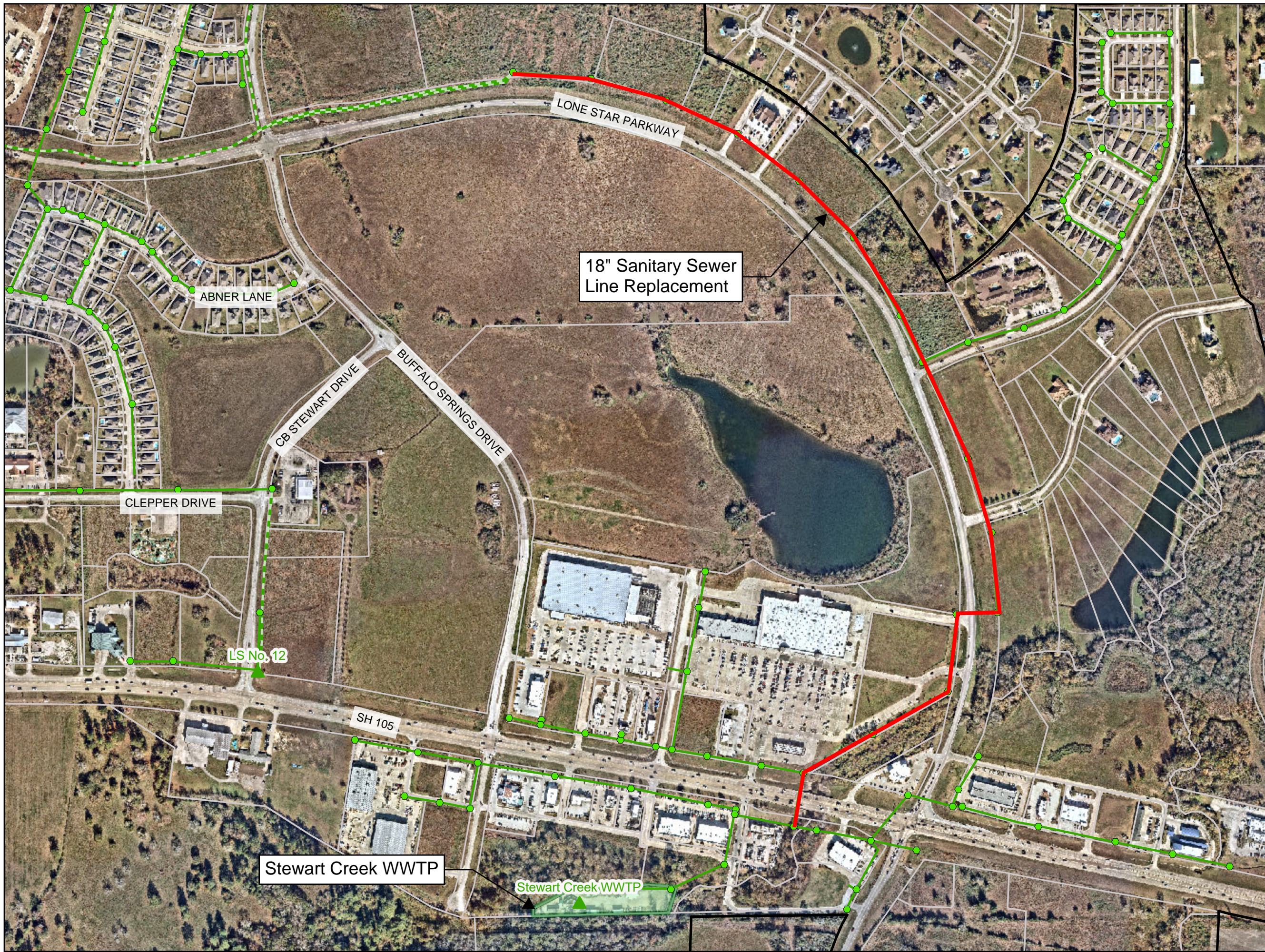
Exhibit No. 2

Sanitary Sewer Impact Fee Overall Map



Disclaimer: This product is offered for graphical purposes only and may not be suitable for legal, engineering, or surveying purposes. The information shown on this exhibit represents the approximate location of property, municipal boundaries or facilities.





Legend

- City Limits
- Sanitary Sewer Infrastructure
 - Lift Station
 - Sanitary Sewer Manhole
 - Sanitary Sewer Gravity Main
 - Sanitary Sewer Force Main
 - Treatment Plant Boundary
- Proposed Capital Projects
 - GSA No. 1 Improvements

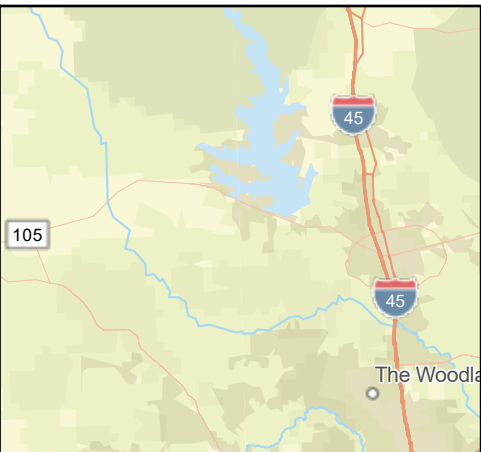
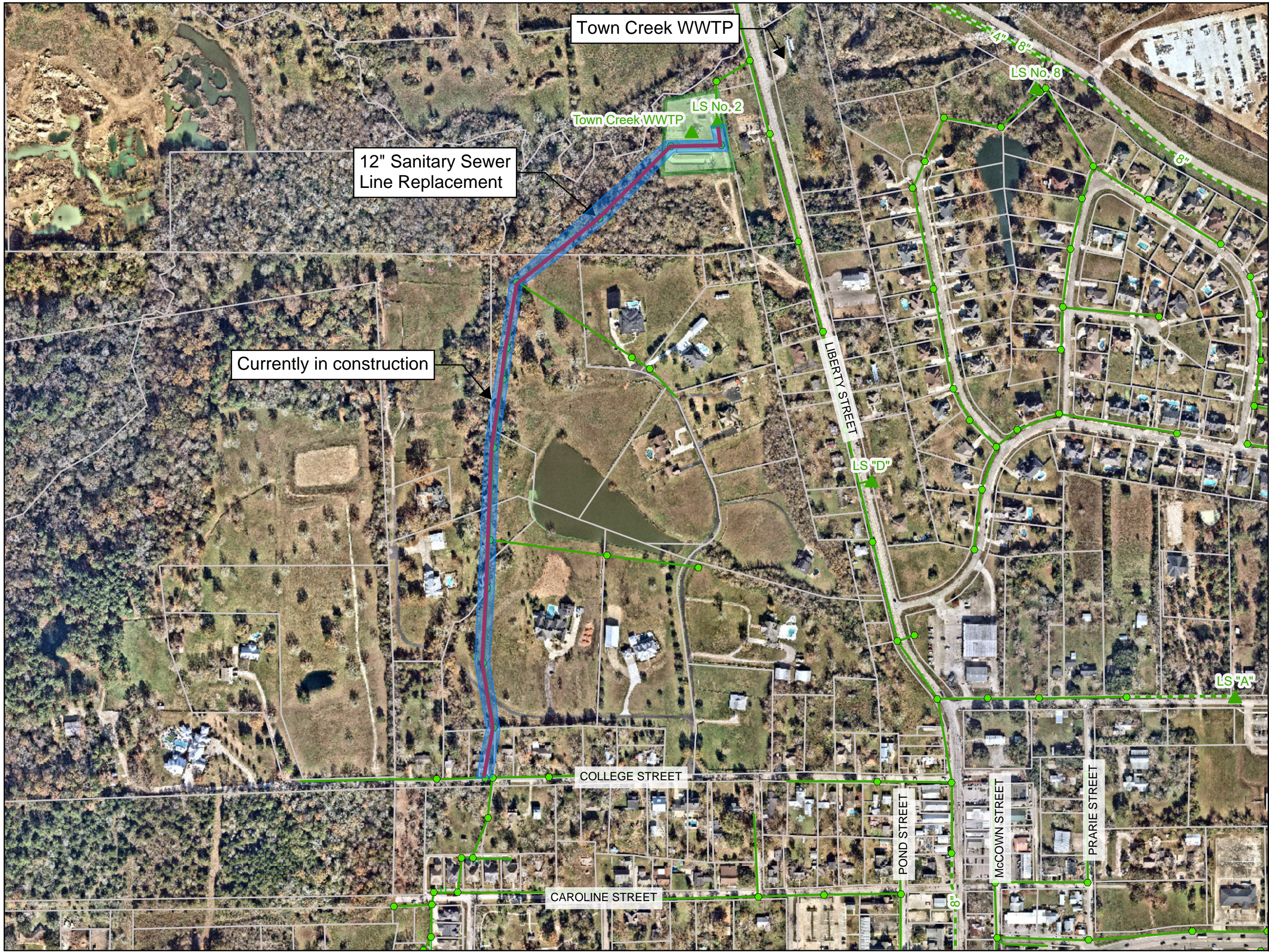
Exhibit No. 2A

GSA No. 1 Improvements



Disclaimer: This product is offered for graphical purposes only and may not be suitable for legal, engineering, or surveying purposes. The information shown on this exhibit represents the approximate location of property, municipal boundaries or facilities.





Legend

- City Limits
- Sanitary Sewer Infrastructure**
 - Lift Station
 - Sanitary Sewer Manhole
 - Sanitary Sewer Gravity Main
 - Sanitary Sewer Force Main
 - Treatment Plant Boundary
- Proposed Capital Projects**
 - 2023 Sanitary Sewer Rehab Phase 1 (Pipe Bursting)
 - Currently in construction

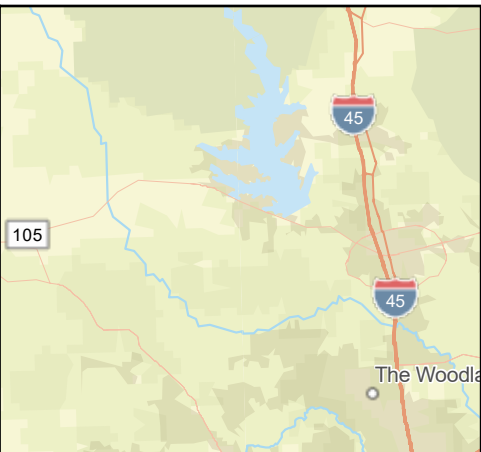
Exhibit No. 2B

2023 Sanitary Sewer Phase 1 (Pipe Bursting)

CITY OF MONTGOMERY
TEXAS EST 1837
BIRTHPLACE OF THE TEXAS FLAG

Disclaimer: This product is offered for graphical purposes only and may not be suitable for legal, engineering, or surveying purposes. The information shown on this exhibit represents the approximate location of property, municipal boundaries or facilities.





Legend

- City Limits
- Sanitary Sewer Infrastructure**
 - Lift Station
 - Sanitary Sewer Manhole
 - Sanitary Sewer Gravity Main
 - Sanitary Sewer Force Main
 - Treatment Plant Boundary
- Proposed Capital Projects**
 - GSA No. 5 Improvements

Exhibit No. 2C

GSA No. 5 Improvements

CITY OF

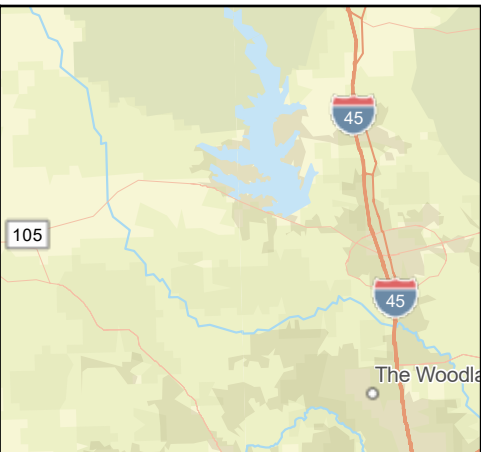
MONTGOMERY

TEXAS  EST 1837

BIRTHPLACE OF THE TEXAS FLAG

Disclaimer: This product is offered for graphical purposes only and may not be suitable for legal, engineering, or surveying purposes. The information shown on this exhibit represents the approximate location of property, municipal boundaries or facilities.

WGA



Legend

- City Limits
- Sanitary Sewer Infrastructure**
 - Lift Station
 - Sanitary Sewer Manhole
 - Sanitary Sewer Gravity Main
 - Sanitary Sewer Force Main
 - Treatment Plant Boundary
- Proposed Capital Projects**
 - GSA No. 12 Improvements

Exhibit No. 2D

GSA No. 12 Improvements



Disclaimer: This product is offered for graphical purposes only and may not be suitable for legal, engineering, or surveying purposes. The information shown on this exhibit represents the approximate location of property, municipal boundaries or facilities.





Legend

- City Limits
- Sanitary Sewer Infrastructure**
 - Lift Station
 - Sanitary Sewer Manhole
 - Sanitary Sewer Gravity Main
 - Sanitary Sewer Force Main
 - Treatment Plant Boundary
- Proposed Capital Projects**
 - Lift Station No. 3 Force Main Reroute

Exhibit No. 2E

Lift Station No. 3 Force Main Reroute



Disclaimer: This product is offered for graphical purposes only and may not be suitable for legal, engineering, or surveying purposes. The information shown on this exhibit represents the approximate location of property, municipal boundaries or facilities.





Legend

- City Limits
- Water Infrastructure**
 - Water Main Valve
 - Blowoff Valve
 - Hydrant
 - Water Well
- Water Plant Boundary
- Water Main
- Proposed Capital Projects**
 - Water Plant No. 2 Improvements

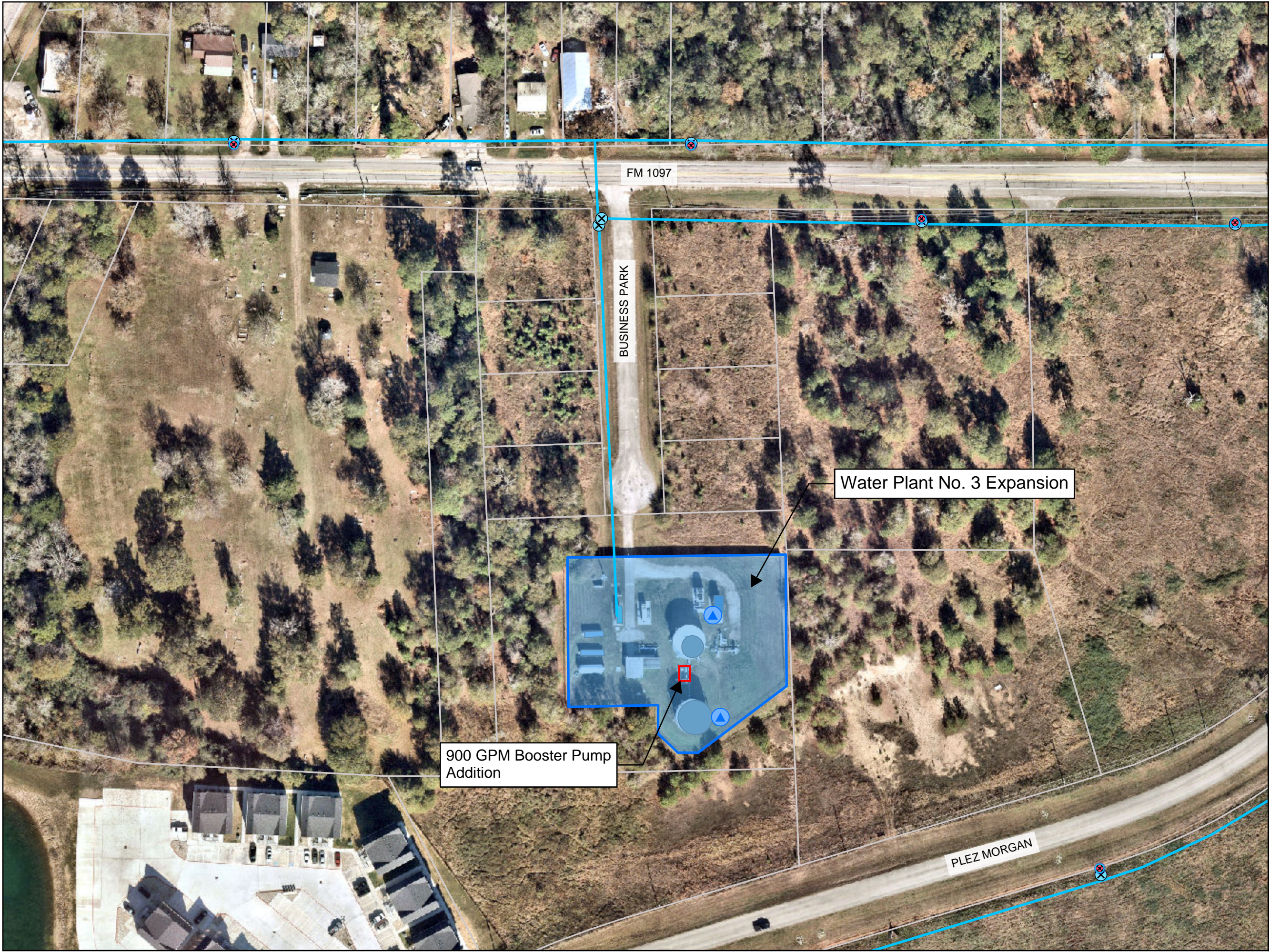
Exhibit No. 3A

Water Plant No. 2 Improvements



Disclaimer: This product is offered for graphical purposes only and may not be suitable for legal, engineering, or surveying purposes. The information shown on this exhibit represents the approximate location of property, municipal boundaries or facilities.





Legend

- City Limits
- Water Infrastructure**
 - Water Main Valve
 - Blowoff Valve
 - Hydrant
 - Water Well
- Water Plant Boundary
- Water Main
- Proposed Capital Projects**
 - Water Plant No. 3 Expansion

Exhibit No. 3B

Water Plant No. 3
Expansion



Disclaimer: This product is offered for graphical purposes only and may not be suitable for legal, engineering, or surveying purposes. The information shown on this exhibit represents the approximate location of property, municipal boundaries or facilities.





Legend

- City Limits

Water Infrastructure

- Water Main Valve
- Blowoff Valve
- Hydrant
- Water Well

Water Plant Boundary

- Water Main

Proposed Capital Projects

- Water Plant No. 4

Exhibit No. 3C

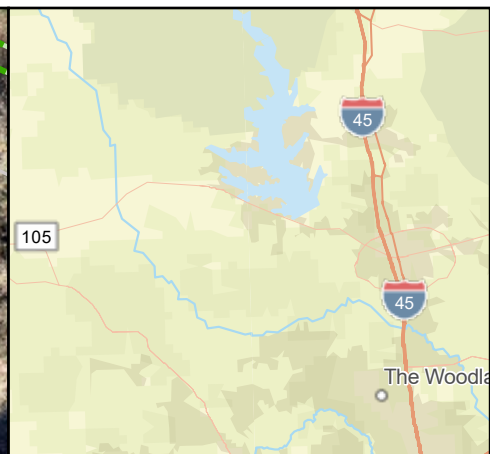
Water Plant No. 4



Disclaimer: This product is offered for graphical purposes only and may not be suitable for legal, engineering, or surveying purposes. The information shown on this exhibit represents the approximate location of property, municipal boundaries or facilities.



Town Creek WWTP Improvements
(0.3 MGD)



Legend

- City Limits
- Sanitary Sewer Infrastructure
 - Lift Station
 - Sanitary Sewer Manhole
 - Sanitary Sewer Gravity Main
 - Sanitary Sewer Force Main
 - Treatment Plant Boundary
- Proposed Capital Projects
 - Town Creek WWTP Improvements

Exhibit No. 3D

Town Creek Wastewater Treatment Plant Improvements



Disclaimer: This product is offered for graphical purposes only and may not be suitable for legal, engineering, or surveying purposes. The information shown on this exhibit represents the approximate location of property, municipal boundaries or facilities.





Town Creek WWTP Upsizing to Ultimate
(0.3 MGD to 0.6 MGD)



Legend

- City Limits
- Sanitary Sewer Infrastructure
 - Lift Station
 - Sanitary Sewer Manhole
 - Sanitary Sewer Gravity Main
 - Sanitary Sewer Force Main
- Treatment Plant Boundary

Proposed Capital Projects

- Town Creek WWTP Upsizing to Ultimate

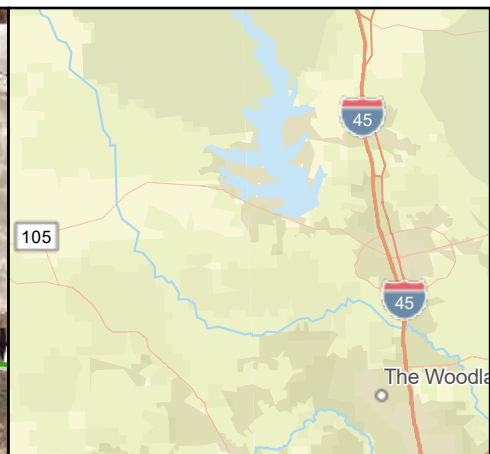
Exhibit No. 3E

**Town Creek Wastewater
Treatment Plant Upsizing to
Ultimate**

CITY OF
MONTGOMERY
TEXAS EST 1837
BIRTHPLACE OF THE TEXAS FLAG

Disclaimer: This product is offered for graphical purposes only and may not be suitable for legal, engineering, or surveying purposes. The information shown on this exhibit represents the approximate location of property, municipal boundaries or facilities.

WGA



Legend

- City Limits
- Sanitary Sewer Infrastructure
 - Lift Station
 - Sanitary Sewer Manhole
 - Sanitary Sewer Gravity Main
 - Sanitary Sewer Force Main
 - Treatment Plant Boundary
- Proposed Capital Projects
 - Stewart Creek WWTP Upsizing

Exhibit No. 3F

Stewart Creek Wastewater Treatment Plant Upsizing



Disclaimer: This product is offered for graphical purposes only and may not be suitable for legal, engineering, or surveying purposes. The information shown on this exhibit represents the approximate location of property, municipal boundaries or facilities.

