

## CITY OF MINNETRISTA



### WORK SESSION AGENDA ITEM 2d

---

**Subject:** Four Way Stop at Lotus Drive and Sunset Lane/Wolfberry Curve

**Prepared By:** Alyson Fauske, PE (MN), City Engineer

**Meeting Date:** February 5, 2025

**Attachments:** Signage Plan

---

**Issue:** Should the City install a 4-way stop at the intersection of Lotus Drive and Sunset Lane/Wolfberry Curve?

#### **Overview**

Over the past month staff has received several complaints about the sight lines and the intersection and vehicle speeds at this intersection.

Staff worked with the property owner in the northwest corner of the intersection to get vegetation cut down.

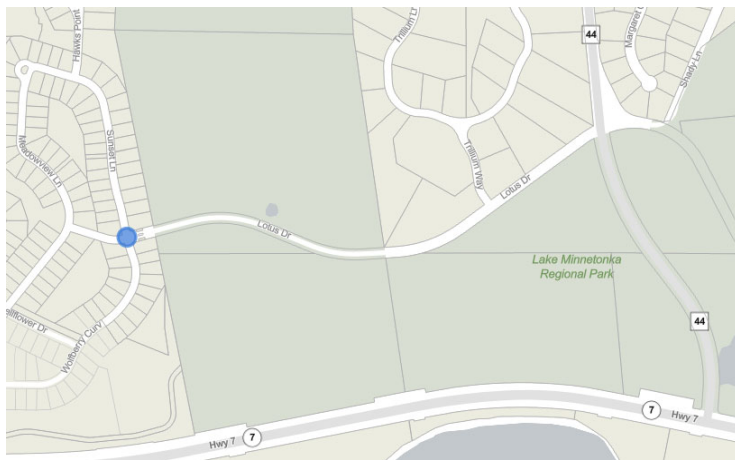


Figure 1. Location of proposed four-way stop

Additionally, a traffic engineer looked at the intersection and recommended a four-way stop condition. This recommendation is due to the sight line issues with the entry monuments on Lotus Drive. The landscape plan for this phase of the development only shows an entry monument in the island on Lotus Drive.

#### **Mission Statement:**

The City of Minnetrista will deliver quality services in a cost effective and innovative manner and provide opportunities for a high quality of life while protecting natural resources and maintaining a rural character.



Figure 2. Entry monuments on Lotus Drive (looking west)

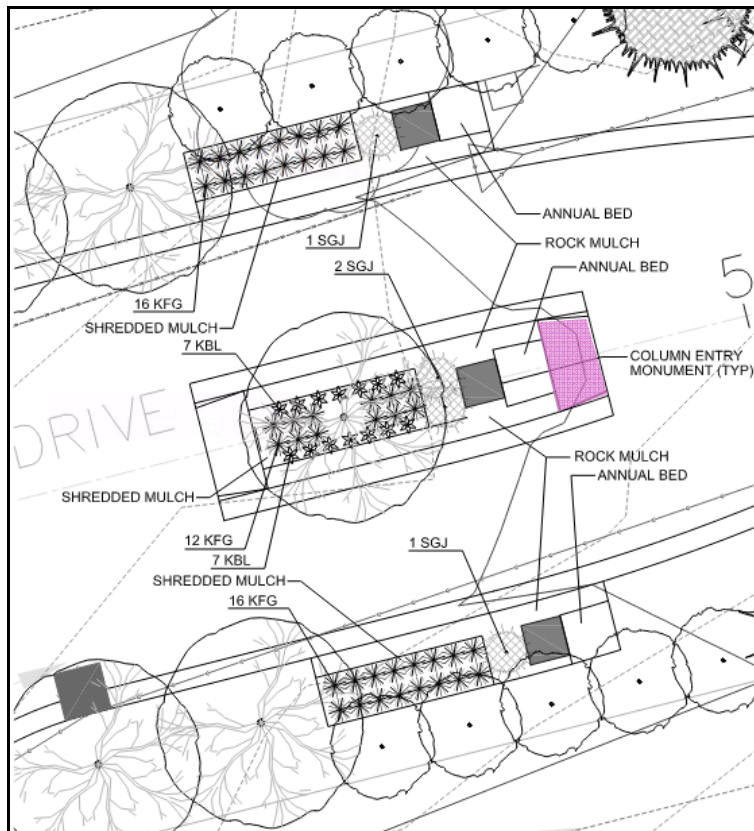


Figure 3. Woodland Cove 5<sup>th</sup> Landscaping Plan

There are stop signs at Sunset Lane and Wolfberry Curve, so additional signage would be required as shown on the attachment.

**Fiscal Impact:**




The cost for the signs is \$500.59. This does not include the public works staff time to place the signs.

**Mission Statement:**

The City of Minnetrista will deliver quality services in a cost effective and innovative manner and provide opportunities for a high quality of life while protecting natural resources and maintaining a rural character.





-  City Boundary
-  Address Labels
-  Parcels

1 in = 58 Ft



October 1, 2025

Map Powered By Datafi

