



**SPOKANE COUNTY**  
**SHERIFF**

Sheriff John F. Nowels

## Spokane County Sheriff's Office Monthly Statistical Crime Review

November 2024

# Millwood Reports

(includes all incidents that the Sheriff's Office handled  
within the City of Millwood)

The data reflected in these reports pertain to only incidents involving  
Spokane County Sheriff's Office personnel.

Airway Heights, Cheney, Liberty Lake, Fairchild Air Force Base, and the City  
of Spokane all have their own law enforcement agency. Their data is not  
reflected in these reports.



Prepared by Regional Intelligence Group 9 on: 12/12/2024



# SPOKANE COUNTY SHERIFF'S OFFICE

Regional Intelligence Group 9

## MONTHLY CRIME STATISTICS COMPARISON - Millwood

Preliminary IBR Counts



| NIBRS Categories               | November |      |        |         | Year to Date |      |        |         |
|--------------------------------|----------|------|--------|---------|--------------|------|--------|---------|
|                                | 2024     | 2023 | Change | Average | 2024         | 2023 | Change | Average |
| <b>Crimes Against People</b>   |          |      |        |         |              |      |        |         |
| Criminal Homicide              | 0        | 0    | 0%     | 0       | 1            | 0    | 100%   | 0       |
| Neg Manslaughter               | 0        | 0    | 0%     | 0       | 0            | 0    | 0%     | 0       |
| Rape                           | 0        | 0    | 0%     | 0       | 0            | 1    | -100%  | 2       |
| Aggravated Assault             | 1        | 0    | 100%   | 1       | 4            | 1    | 300%   | 2       |
| Simple Assault                 | 1        | 1    | 0%     | 1       | 8            | 8    | 0%     | 10      |
| <b>Crimes Against Property</b> |          |      |        |         |              |      |        |         |
| Robbery                        | 0        | 0    | 0%     | 0       | 1            | 2    | -50%   | 1       |
| Burglary - Residential         | 0        | 0    | 0%     | 1       | 4            | 3    | 33%    | 3       |
| Burglary - Garage              | 0        | 0    | 0%     | 3       | 1            | 2    | -50%   | 4       |
| Burglary - Commercial          | 0        | 0    | 0%     | 1       | 2            | 3    | -33%   | 4       |
| Theft                          | 1        | 0    | 100%   | 2       | 15           | 17   | -12%   | 25      |
| Theft - Shoplifting            | 5        | 2    | 150%   | 3       | 33           | 37   | -11%   | 28      |
| Vehicle Theft                  | 0        | 0    | 0%     | 1       | 4            | 0    | 400%   | 5       |
| Malicious Mischief             | 0        | 1    | -100%  | 5       | 22           | 27   | -19%   | 28      |
| Vehicle Prowl                  | 0        | 0    | 0%     | 2       | 5            | 8    | -38%   | 14      |

\* averages are a 5 year average and are calculated on data since 01/01/2019

This chart represents preliminary counts of the original incident reports. Full statistical analysis to determine the confidence level of this data has not been performed. In general, the preliminary incident counts are less than the crimes eventually reported on the yearly crime report.

### Notes on Category Groupings:

Criminal Homicide = IBR Classification 09A

Neg Manslaughter = IBR Classification 09B

Rape = IBR Classification 11A, 11B, & 11C

Aggravated Assault = IBR Classification 13A

Simple Assault = IBR Classification 13B

Robbery = IBR Classification 120

Burglary = IBR Classification 220 (residential, garage, and commercial breakdown is done by statute description)

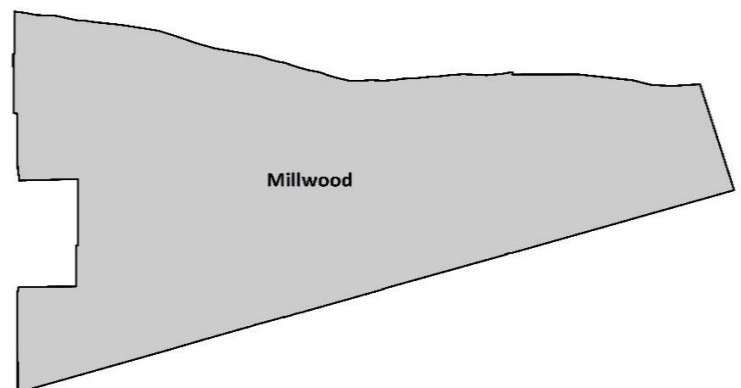
Theft = IBR Classifications 23A, 23B, 23D, 23E, 23G, 23H

Theft - Shoplifting = IBR Classification 23C (intentionally removed from the theft grouping)

Vehicle Theft = IBR Classification 240

Malicious Mischief = IBR Classification 290, Destruction/Damage/Vandalism

Vehicle Prowl = IBR Classification 23F, Theft from Motor



## Regional Intelligence Group 9

### IBR Count by District - Millwood Highlighted



Time Period: November 2024

| IBR Offense                                   | Spokane Valley Districts |    |    |    |    |    | Unincorporated Districts |   |    |    |    |    |    |    |    |    |    |     |    |   | MW | RF | SPA | WAV | OTHER | TOTAL |
|---|--------------------------|----|----|----|----|----|--------------------------|---|----|----|----|----|----|----|----|----|----|-----|----|---|----|----|-----|-----|-------|-------|
|   | 1                        | 2  | 3  | 4  | 5  | 6  | 7                        | 8 | 9  | 10 | 11 | 12 | 13 | 14 | 15 | DP | FF | LAH | ML |   |    |    |     |     |       |       |
| 09A Murder/NonNegligent Manslaughter          | 0                        | 0  | 0  | 0  | 0  | 0  | 0                        | 0 | 0  | 0  | 0  | 0  | 0  | 0  | 0  | 0  | 0  | 0   | 0  | 0 | 0  | 0  | 0   | 0   | 0     |       |
| 09B Negligent Manslaughter                    | 0                        | 0  | 0  | 0  | 0  | 0  | 0                        | 0 | 0  | 0  | 0  | 0  | 0  | 0  | 0  | 0  | 0  | 0   | 0  | 0 | 0  | 0  | 0   | 0   | 0     |       |
| 100 Kidnapping/Abduction                      | 0                        | 0  | 0  | 0  | 0  | 0  | 0                        | 0 | 0  | 2  | 0  | 1  | 0  | 0  | 0  | 0  | 0  | 0   | 0  | 0 | 0  | 0  | 2   | 5   |       |       |
| 11A Rape - Forcible                           | 0                        | 0  | 0  | 0  | 1  | 1  | 0                        | 0 | 0  | 0  | 1  | 0  | 0  | 0  | 0  | 0  | 0  | 0   | 0  | 1 | 0  | 0  | 0   | 1   | 5     |       |
| 11B Sodomy - Forcible                         | 0                        | 0  | 1  | 0  | 0  | 0  | 0                        | 0 | 0  | 0  | 0  | 0  | 0  | 0  | 0  | 0  | 0  | 0   | 0  | 0 | 0  | 0  | 0   | 1   |       |       |
| 11C Sex Assault With Object                   | 0                        | 0  | 0  | 0  | 0  | 0  | 0                        | 0 | 0  | 0  | 0  | 0  | 0  | 0  | 0  | 0  | 0  | 0   | 0  | 0 | 0  | 0  | 0   | 0   |       |       |
| 11D Fondling - Forcible                       | 0                        | 0  | 1  | 0  | 0  | 0  | 0                        | 0 | 0  | 1  | 0  | 0  | 0  | 0  | 0  | 0  | 0  | 0   | 0  | 0 | 0  | 0  | 0   | 2   |       |       |
| 120 Robbery                                   | 0                        | 0  | 1  | 2  | 0  | 1  | 1                        | 0 | 1  | 0  | 0  | 0  | 0  | 0  | 0  | 0  | 0  | 0   | 0  | 0 | 0  | 0  | 0   | 6   |       |       |
| 13A Aggravated Assault                        | 1                        | 2  | 2  | 1  | 2  | 1  | 3                        | 2 | 3  | 1  | 1  | 0  | 3  | 1  | 0  | 0  | 0  | 0   | 0  | 0 | 0  | 5  | 29  |     |       |       |
| 13B Simple Assault                            | 5                        | 12 | 6  | 13 | 5  | 5  | 2                        | 1 | 2  | 0  | 4  | 1  | 10 | 2  | 0  | 1  | 0  | 0   | 0  | 1 | 0  | 1  | 8   | 79  |       |       |
| 13C Intimidation                              | 2                        | 5  | 3  | 3  | 2  | 5  | 1                        | 0 | 0  | 1  | 0  | 1  | 6  | 0  | 0  | 2  | 0  | 0   | 1  | 0 | 0  | 0  | 2   | 34  |       |       |
| 36A Incest                                    | 0                        | 0  | 0  | 0  | 0  | 0  | 0                        | 0 | 0  | 0  | 0  | 0  | 0  | 0  | 0  | 0  | 0  | 0   | 0  | 0 | 0  | 0  | 0   | 0   |       |       |
| 36B Rape - Statutory                          | 0                        | 0  | 0  | 0  | 0  | 0  | 0                        | 0 | 0  | 0  | 0  | 0  | 0  | 0  | 0  | 0  | 0  | 0   | 0  | 0 | 0  | 0  | 0   | 0   |       |       |
| 64A Human Trafficking - Commercial Sex Acts   | 0                        | 0  | 0  | 0  | 0  | 0  | 0                        | 0 | 0  | 0  | 0  | 0  | 0  | 0  | 0  | 0  | 0  | 0   | 0  | 0 | 0  | 0  | 0   | 0   |       |       |
| 64B Human Trafficking - Involuntary Servitude | 0                        | 0  | 0  | 0  | 0  | 0  | 0                        | 0 | 0  | 0  | 0  | 0  | 0  | 0  | 0  | 0  | 0  | 0   | 0  | 0 | 0  | 0  | 0   | 0   |       |       |
| 500 Violation of Protection Orders            | 4                        | 5  | 6  | 5  | 0  | 2  | 5                        | 0 | 1  | 2  | 3  | 1  | 0  | 1  | 0  | 1  | 0  | 0   | 0  | 0 | 0  | 0  | 3   | 39  |       |       |
| Total Crimes Against Persons                  | 12                       | 24 | 20 | 24 | 10 | 15 | 12                       | 3 | 7  | 4  | 12 | 3  | 20 | 4  | 0  | 4  | 0  | 0   | 2  | 2 | 0  | 0  | 1   | 21  | 200   |       |
| 200 Arson                                     | 0                        | 1  | 0  | 0  | 0  | 0  | 0                        | 0 | 0  | 0  | 1  | 0  | 0  | 0  | 0  | 0  | 0  | 0   | 0  | 0 | 0  | 0  | 0   | 2   |       |       |
| 210 Extortion/Blackmail                       | 2                        | 1  | 0  | 0  | 0  | 3  | 1                        | 0 | 0  | 0  | 1  | 0  | 2  | 2  | 0  | 0  | 0  | 0   | 1  | 0 | 0  | 0  | 3   | 16  |       |       |
| 220 Burglary/Breaking & Entering              | 3                        | 3  | 12 | 13 | 2  | 11 | 9                        | 1 | 2  | 1  | 8  | 3  | 8  | 3  | 0  | 1  | 0  | 0   | 0  | 0 | 1  | 0  | 21  | 102 |       |       |
| 23A Theft - Pocket-Picking                    | 0                        | 0  | 0  | 0  | 0  | 0  | 0                        | 0 | 0  | 0  | 0  | 0  | 0  | 0  | 0  | 0  | 0  | 0   | 0  | 0 | 0  | 0  | 0   | 0   |       |       |
| 23B Theft - Purse Snatching                   | 0                        | 0  | 0  | 0  | 0  | 0  | 0                        | 0 | 0  | 0  | 0  | 0  | 0  | 0  | 0  | 0  | 0  | 0   | 0  | 0 | 0  | 0  | 0   | 0   |       |       |
| 23C Theft - Shoplifting                       | 6                        | 3  | 5  | 23 | 10 | 11 | 0                        | 2 | 1  | 3  | 0  | 0  | 3  | 0  | 0  | 2  | 0  | 0   | 0  | 5 | 0  | 0  | 19  | 93  |       |       |
| 23D Theft From Building                       | 4                        | 5  | 4  | 3  | 2  | 1  | 2                        | 0 | 1  | 1  | 3  | 0  | 4  | 0  | 0  | 2  | 0  | 0   | 0  | 1 | 0  | 0  | 5   | 38  |       |       |
| 23E Theft From Coin Operated Machine          | 0                        | 0  | 0  | 0  | 0  | 0  | 0                        | 0 | 0  | 0  | 0  | 0  | 0  | 0  | 0  | 0  | 0  | 0   | 0  | 0 | 0  | 0  | 0   | 0   |       |       |
| 23F Theft From Motor Vehicle                  | 6                        | 11 | 1  | 12 | 4  | 12 | 1                        | 2 | 5  | 10 | 2  | 1  | 5  | 3  | 0  | 0  | 1  | 0   | 5  | 0 | 0  | 0  | 11  | 92  |       |       |
| 23G Theft of Motor Vehicle Parts/Accessories  | 4                        | 4  | 0  | 1  | 2  | 3  | 1                        | 3 | 6  | 3  | 0  | 0  | 2  | 1  | 0  | 0  | 0  | 0   | 1  | 0 | 0  | 0  | 0   | 31  |       |       |
| 23H Theft - All Other                         | 9                        | 5  | 7  | 14 | 9  | 9  | 5                        | 5 | 12 | 9  | 4  | 4  | 9  | 3  | 0  | 7  | 0  | 0   | 3  | 0 | 3  | 0  | 12  | 129 |       |       |
| 240 Motor Vehicle Theft                       | 6                        | 5  | 2  | 4  | 0  | 3  | 1                        | 2 | 1  | 1  | 0  | 1  | 4  | 0  | 0  | 1  | 0  | 0   | 0  | 0 | 0  | 0  | 4   | 35  |       |       |
| 250 Counterfeiting/Forgery                    | 1                        | 3  | 1  | 0  | 5  | 1  | 0                        | 0 | 0  | 0  | 0  | 0  | 0  | 0  | 0  | 0  | 0  | 0   | 1  | 0 | 0  | 0  | 1   | 13  |       |       |
| 26A Fraud - False Pretense/Swindling          | 4                        | 7  | 3  | 2  | 9  | 3  | 0                        | 1 | 5  | 0  | 1  | 2  | 1  | 2  | 0  | 2  | 0  | 0   | 1  | 0 | 0  | 0  | 8   | 51  |       |       |
| 26B Fraud - Credit Card/ATM                   | 3                        | 3  | 1  | 3  | 3  | 2  | 1                        | 0 | 2  | 2  | 1  | 0  | 2  | 1  | 0  | 0  | 0  | 0   | 2  | 1 | 0  | 0  | 2   | 29  |       |       |
| 26C Fraud - Impersonation                     | 2                        | 0  | 1  | 3  | 3  | 3  | 4                        | 2 | 2  | 1  | 2  | 1  | 2  | 1  | 0  | 1  | 0  | 0   | 0  | 0 | 1  | 0  | 2   | 31  |       |       |
| 26D Welfare Fraud                             | 0                        | 0  | 0  | 0  | 0  | 0  | 0                        | 0 | 0  | 0  | 0  | 0  | 0  | 0  | 0  | 0  | 0  | 0   | 0  | 0 | 0  | 0  | 0   | 0   |       |       |
| 26F Identity Theft                            | 0                        | 3  | 1  | 2  | 5  | 1  | 0                        | 1 | 2  | 2  | 0  | 1  | 1  | 1  | 0  | 0  | 0  | 0   | 0  | 0 | 0  | 0  | 1   | 21  |       |       |
| 26G Hacking/Computer Invasion                 | 2                        | 1  | 0  | 0  | 6  | 0  | 1                        | 1 | 3  | 1  | 1  | 0  | 4  | 3  | 0  | 0  | 0  | 0   | 0  | 0 | 0  | 0  | 1   | 24  |       |       |

# SPOKANE COUNTY SHERIFF'S OFFICE

Regional Intelligence Group 9

## IBR Count by District - Millwood Highlighted



Time Period: November 2024

| IBR Offense                                      | Spokane Valley Districts |     |    |     |    |     | Unincorporated Districts |    |    |    |    |    |     |    |    |    |    |     |    |    | MW | RF | SPA | WAV | OTHER | TOTAL |
|--|--------------------------|-----|----|-----|----|-----|--------------------------|----|----|----|----|----|-----|----|----|----|----|-----|----|----|----|----|-----|-----|-------|-------|
|  | 1                        | 2   | 3  | 4   | 5  | 6   | 7                        | 8  | 9  | 10 | 11 | 12 | 13  | 14 | 15 | DP | FF | LAH | ML |    |    |    |     |     |       |       |
| 270 Embezzlement                                 | 0                        | 0   | 0  | 2   | 0  | 2   | 0                        | 0  | 0  | 0  | 0  | 2  | 0   | 0  | 0  | 0  | 0  | 0   | 0  | 0  | 0  | 0  | 0   | 0   | 0     | 6     |
| 280 Stolen Property Offense<br>(Receiving, etc.) | 1                        | 1   | 1  | 1   | 0  | 0   | 1                        | 0  | 0  | 0  | 0  | 0  | 1   | 0  | 0  | 1  | 0  | 0   | 0  | 0  | 0  | 0  | 0   | 2   | 9     |       |
| 290 Destruction/Vandalism                        | 10                       | 23  | 19 | 26  | 20 | 24  | 11                       | 6  | 13 | 12 | 15 | 6  | 14  | 7  | 0  | 3  | 1  | 0   | 5  | 0  | 0  | 0  | 14  | 229 |       |       |
| Total Crimes Against Property                    | 63                       | 79  | 58 | 109 | 80 | 89  | 38                       | 26 | 55 | 46 | 39 | 21 | 62  | 27 | 0  | 20 | 2  | 0   | 19 | 7  | 5  | 0  | 0   | 106 | 951   |       |
| 35A Drugs/Narcotics Violation                    | 3                        | 5   | 3  | 2   | 1  | 0   | 2                        | 0  | 1  | 1  | 0  | 3  | 3   | 0  | 0  | 0  | 0  | 0   | 0  | 1  | 0  | 0  | 0   | 17  | 42    |       |
| 35B Drug Equipment Violation                     | 2                        | 1   | 1  | 0   | 1  | 0   | 1                        | 0  | 1  | 0  | 0  | 2  | 2   | 0  | 0  | 0  | 0  | 0   | 0  | 1  | 0  | 0  | 0   | 6   | 18    |       |
| 370 Pornography/Obscene Material                 | 0                        | 0   | 0  | 0   | 0  | 0   | 0                        | 0  | 0  | 0  | 0  | 0  | 1   | 0  | 0  | 0  | 0  | 0   | 0  | 0  | 0  | 0  | 0   | 1   | 1     |       |
| 39A Betting/Wagering                             | 0                        | 0   | 0  | 0   | 0  | 0   | 0                        | 0  | 0  | 0  | 0  | 0  | 0   | 0  | 0  | 0  | 0  | 0   | 0  | 0  | 0  | 0  | 0   | 0   | 0     |       |
| 39B Gambling - Operating Promoting<br>Assisting  | 0                        | 0   | 0  | 0   | 0  | 0   | 0                        | 0  | 0  | 0  | 0  | 0  | 0   | 0  | 0  | 0  | 0  | 0   | 0  | 0  | 0  | 0  | 0   | 0   | 0     |       |
| 39C Gambling Equipment Violation                 | 0                        | 0   | 0  | 0   | 0  | 0   | 0                        | 0  | 0  | 0  | 0  | 0  | 0   | 0  | 0  | 0  | 0  | 0   | 0  | 0  | 0  | 0  | 0   | 0   | 0     |       |
| 40A Prostitution                                 | 0                        | 0   | 0  | 0   | 0  | 0   | 0                        | 0  | 0  | 0  | 0  | 0  | 0   | 0  | 0  | 0  | 0  | 0   | 0  | 0  | 0  | 0  | 0   | 0   | 0     |       |
| 40B Prostitution - Assisting/Promoting           | 0                        | 0   | 0  | 0   | 0  | 0   | 0                        | 0  | 0  | 0  | 0  | 0  | 0   | 0  | 0  | 0  | 0  | 0   | 0  | 0  | 0  | 0  | 0   | 0   | 0     |       |
| 40C Purchasing Prostitution                      | 0                        | 0   | 0  | 0   | 0  | 0   | 0                        | 0  | 0  | 0  | 0  | 0  | 0   | 0  | 0  | 0  | 0  | 0   | 0  | 0  | 0  | 0  | 0   | 0   | 0     |       |
| 510 Bribery                                      | 0                        | 0   | 0  | 0   | 0  | 0   | 0                        | 0  | 0  | 0  | 0  | 0  | 0   | 0  | 0  | 0  | 0  | 0   | 0  | 0  | 0  | 0  | 0   | 0   | 0     |       |
| 520 Weapon Law Violation                         | 1                        | 0   | 1  | 1   | 0  | 1   | 1                        | 2  | 1  | 0  | 0  | 0  | 0   | 0  | 0  | 0  | 0  | 0   | 0  | 0  | 0  | 0  | 3   | 11  | 11    |       |
| 720 Animal Cruelty                               | 0                        | 0   | 0  | 0   | 0  | 0   | 0                        | 0  | 0  | 0  | 0  | 0  | 0   | 0  | 0  | 0  | 0  | 0   | 0  | 0  | 0  | 0  | 0   | 0   | 0     |       |
| Total Crimes Against Society                     | 6                        | 6   | 5  | 3   | 2  | 1   | 4                        | 2  | 3  | 1  | 0  | 5  | 6   | 0  | 0  | 0  | 0  | 0   | 0  | 2  | 0  | 0  | 0   | 26  | 72    |       |
| 09C Justifiable Homicide                         | 0                        | 0   | 0  | 0   | 0  | 0   | 0                        | 0  | 0  | 0  | 0  | 0  | 0   | 0  | 0  | 0  | 0  | 0   | 0  | 0  | 0  | 0  | 0   | 0   | 0     |       |
| 90A Bad Checks                                   | 0                        | 0   | 0  | 0   | 0  | 0   | 0                        | 0  | 0  | 0  | 0  | 0  | 0   | 0  | 0  | 0  | 0  | 0   | 0  | 0  | 0  | 0  | 0   | 0   | 0     |       |
| 90B Curfew/Loitering                             | 0                        | 0   | 0  | 0   | 0  | 0   | 0                        | 0  | 0  | 0  | 0  | 0  | 0   | 0  | 0  | 0  | 0  | 0   | 0  | 0  | 0  | 0  | 0   | 0   | 0     |       |
| 90C Disorderly Conduct                           | 0                        | 0   | 0  | 2   | 0  | 0   | 0                        | 0  | 0  | 0  | 0  | 0  | 0   | 0  | 0  | 0  | 0  | 0   | 0  | 0  | 0  | 0  | 0   | 2   | 2     |       |
| 90D Driving Under Influence                      | 4                        | 8   | 1  | 4   | 0  | 2   | 2                        | 0  | 0  | 1  | 0  | 1  | 3   | 3  | 0  | 0  | 0  | 0   | 0  | 2  | 0  | 0  | 0   | 3   | 34    |       |
| 90F Family Offense - NonViolent                  | 0                        | 0   | 0  | 0   | 0  | 0   | 0                        | 0  | 0  | 0  | 0  | 0  | 0   | 0  | 0  | 0  | 0  | 0   | 0  | 0  | 0  | 0  | 0   | 0   | 0     |       |
| 90G Liquor Law Violation                         | 0                        | 1   | 0  | 0   | 0  | 0   | 0                        | 0  | 0  | 0  | 0  | 0  | 0   | 0  | 0  | 0  | 0  | 0   | 0  | 0  | 0  | 0  | 0   | 1   | 1     |       |
| 90H Peeping Tom                                  | 0                        | 0   | 0  | 0   | 0  | 0   | 0                        | 0  | 0  | 0  | 0  | 0  | 0   | 0  | 0  | 0  | 0  | 0   | 0  | 0  | 0  | 0  | 0   | 0   | 0     |       |
| 90J Trespass of Real Property                    | 3                        | 3   | 5  | 3   | 1  | 2   | 2                        | 1  | 2  | 2  | 3  | 0  | 1   | 1  | 0  | 0  | 0  | 0   | 1  | 0  | 0  | 0  | 14  | 44  | 44    |       |
| 90Z All Other Offenses                           | 4                        | 6   | 5  | 9   | 2  | 1   | 5                        | 0  | 5  | 3  | 2  | 3  | 7   | 2  | 0  | 1  | 0  | 0   | 2  | 0  | 0  | 0  | 22  | 79  | 79    |       |
| Total Group B Offenses                           | 11                       | 18  | 11 | 18  | 3  | 5   | 9                        | 1  | 7  | 6  | 5  | 4  | 11  | 6  | 0  | 1  | 0  | 0   | 3  | 2  | 0  | 0  | 0   | 39  | 160   |       |
| NR Not Reportable                                | 2                        | 5   | 0  | 3   | 1  | 1   | 1                        | 1  | 0  | 2  | 0  | 3  | 6   | 3  | 0  | 1  | 0  | 0   | 0  | 2  | 0  | 0  | 0   | 7   | 38    |       |
|  |                          |     |    |     |    |     |                          |    |    |    |    |    |     |    |    |    |    |     |    |    |    |    |     |     |       |       |
| Total All Offenses                               | 94                       | 132 | 94 | 157 | 96 | 111 | 64                       | 33 | 72 | 59 | 56 | 36 | 105 | 40 | 0  | 26 | 2  | 0   | 24 | 15 | 5  | 0  | 1   | 199 | 1421  |       |

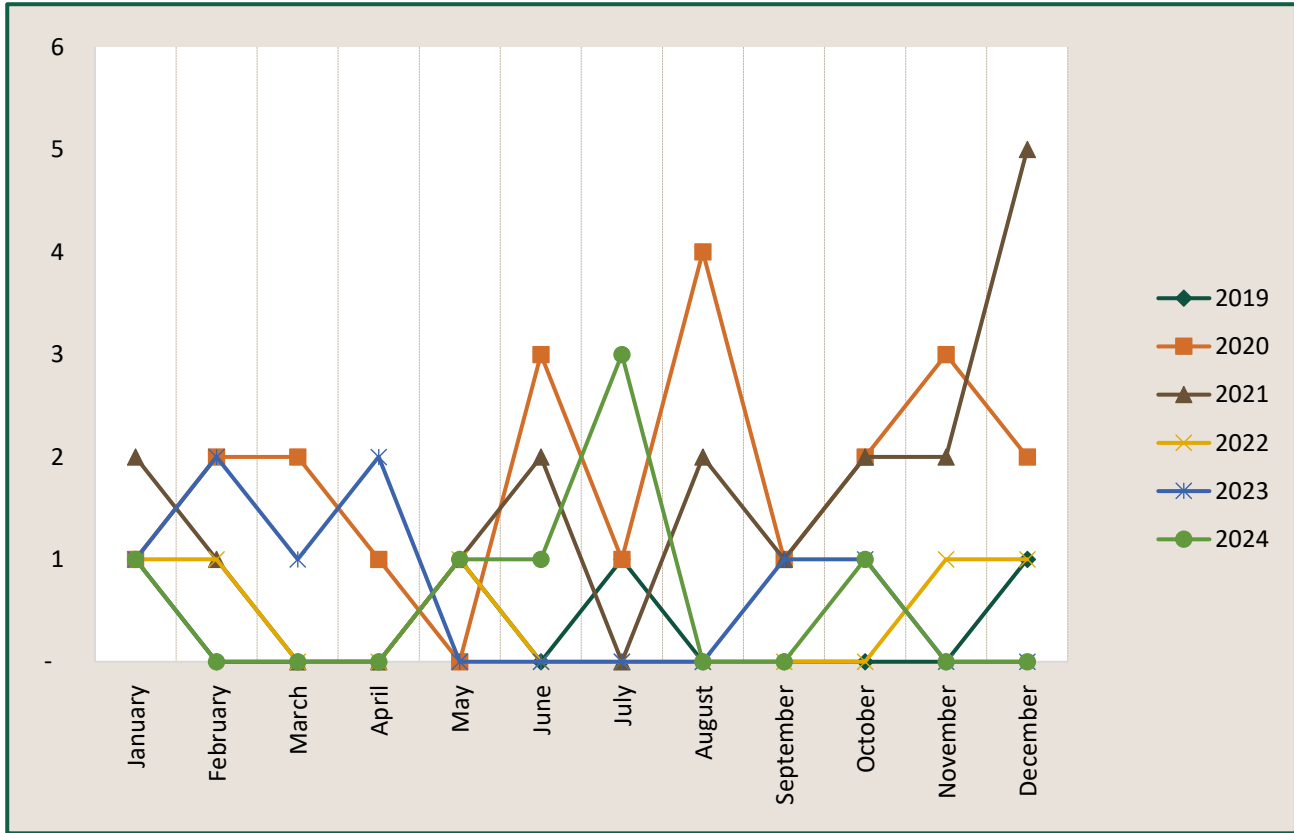
# SPOKANE COUNTY SHERIFF'S OFFICE

Regional Intelligence Group 9

## Burglary - Millwod



Time Period: November 2024



|                    | 2019     | 2020      | 2021      | 2022     | 2023     | 2024     |
|--------------------|----------|-----------|-----------|----------|----------|----------|
| January            | 1        | 1         | 2         | 1        | 1        | 1        |
| February           | -        | 2         | 1         | 1        | 2        | -        |
| March              | -        | 2         | -         | -        | 1        | -        |
| April              | -        | 1         | -         | -        | 2        | -        |
| May                | 1        | -         | 1         | 1        | -        | 1        |
| June               | -        | 3         | 2         | -        | -        | 1        |
| July               | 1        | 1         | -         | -        | -        | 3        |
| August             | -        | 4         | 2         | -        | -        | -        |
| September          | -        | 1         | 1         | -        | 1        | -        |
| October            | -        | 2         | 2         | -        | 1        | 1        |
| November           | -        | 3         | 2         | 1        | -        | -        |
| December           | 1        | 2         | 5         | 1        | -        | -        |
| <b>Grand Total</b> | <b>4</b> | <b>22</b> | <b>18</b> | <b>5</b> | <b>8</b> | <b>7</b> |

\* IBR Offense: Burglary/Breaking & Entering 220

Produced: 12/12/2024

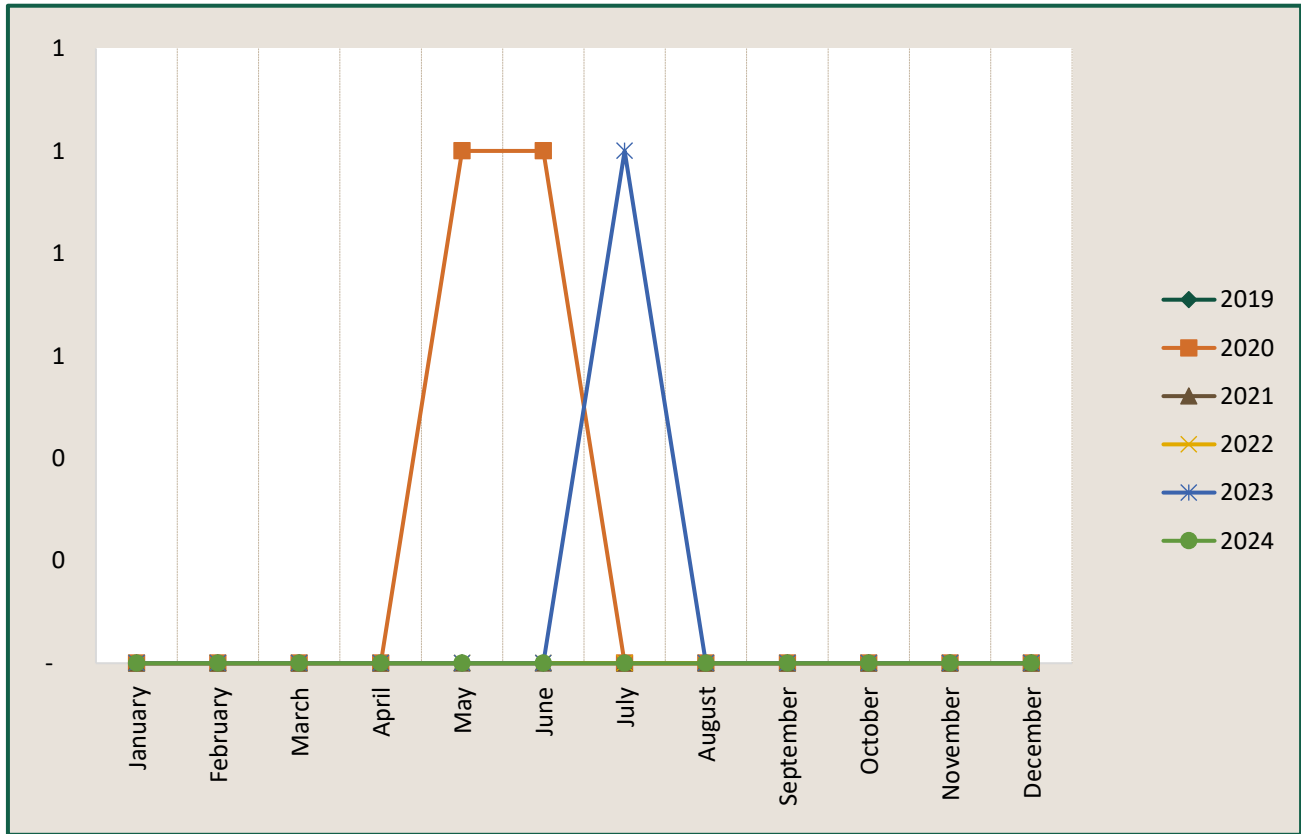
# SPOKANE COUNTY SHERIFF'S OFFICE

Regional Intelligence Group 9

## Rape - Millwood



Time Period: November 2024



|                    | 2019 | 2020     | 2021 | 2022 | 2023     | 2024 |
|--------------------|------|----------|------|------|----------|------|
| January            | -    | -        | -    | -    | -        | -    |
| February           | -    | -        | -    | -    | -        | -    |
| March              | -    | -        | -    | -    | -        | -    |
| April              | -    | -        | -    | -    | -        | -    |
| May                | -    | 1        | -    | -    | -        | -    |
| June               | -    | 1        | -    | -    | -        | -    |
| July               | -    | -        | -    | -    | 1        | -    |
| August             | -    | -        | -    | -    | -        | -    |
| September          | -    | -        | -    | -    | -        | -    |
| October            | -    | -        | -    | -    | -        | -    |
| November           | -    | -        | -    | -    | -        | -    |
| December           | -    | -        | -    | -    | -        | -    |
| <b>Grand Total</b> | -    | <b>2</b> | -    | -    | <b>1</b> | -    |

\*IBR Offense: Rape - Forcible 11A, Sodomy - Forcible 11B, Sexual Assault with Object 11C

Produced: 12/12/2024

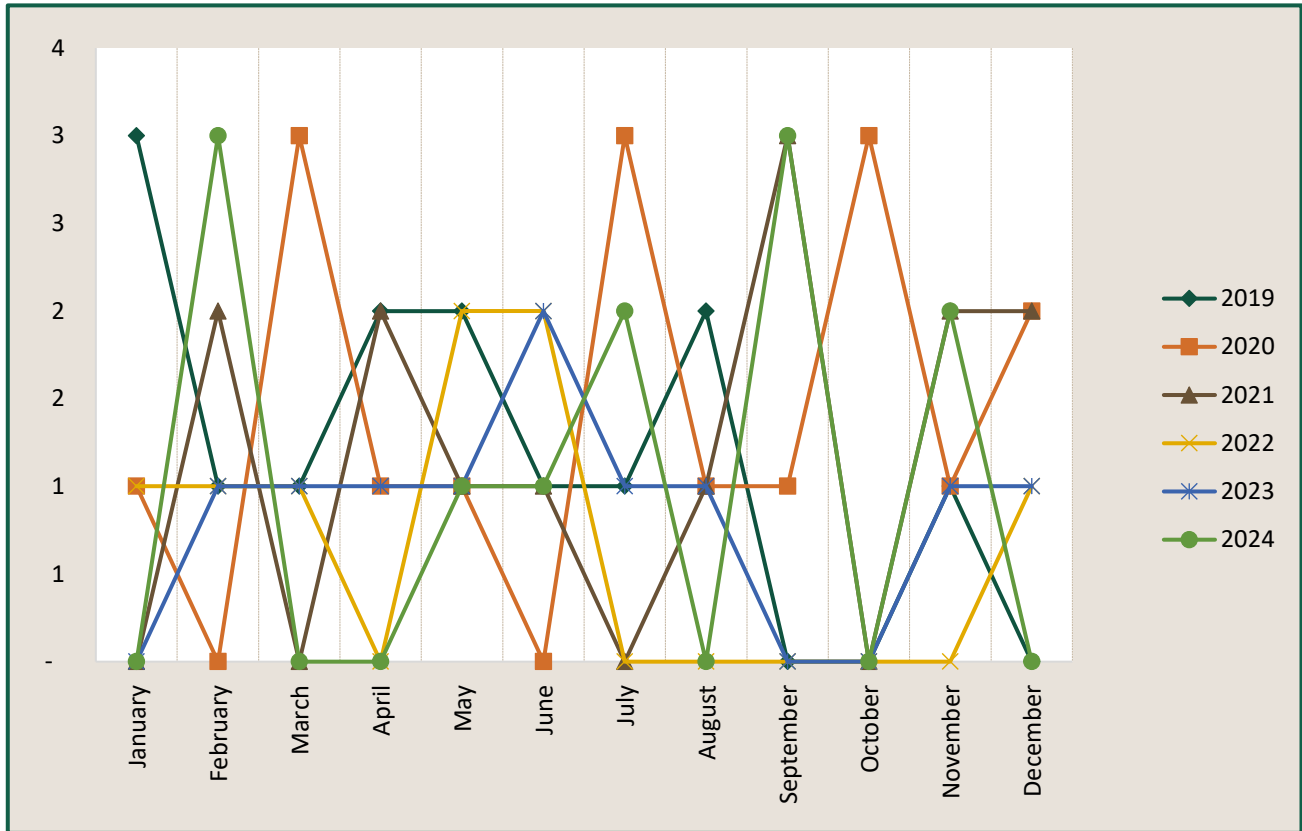
# SPOKANE COUNTY SHERIFF'S OFFICE

Regional Intelligence Group 9

## Assault - Millwood



Time Period: November 2024



|                    | 2019      | 2020      | 2021      | 2022     | 2023      | 2024      |
|--------------------|-----------|-----------|-----------|----------|-----------|-----------|
| January            | 3         | 1         | -         | 1        | -         | -         |
| February           | 1         | -         | 2         | 1        | 1         | 3         |
| March              | 1         | 3         | -         | 1        | 1         | -         |
| April              | 2         | 1         | 2         | -        | 1         | -         |
| May                | 2         | 1         | 1         | 2        | 1         | 1         |
| June               | 1         | -         | 1         | 2        | 2         | 1         |
| July               | 1         | 3         | -         | -        | 1         | 2         |
| August             | 2         | 1         | 1         | -        | 1         | -         |
| September          | -         | 1         | 3         | -        | -         | 3         |
| October            | -         | 3         | -         | -        | -         | -         |
| November           | 1         | 1         | 2         | -        | 1         | 2         |
| December           | -         | 2         | 2         | 1        | 1         | -         |
| <b>Grand Total</b> | <b>14</b> | <b>17</b> | <b>14</b> | <b>8</b> | <b>10</b> | <b>12</b> |

\* IBR Offense: Aggravated Assault 13A & Simple Assault 13B

Produced: 12/12/2024

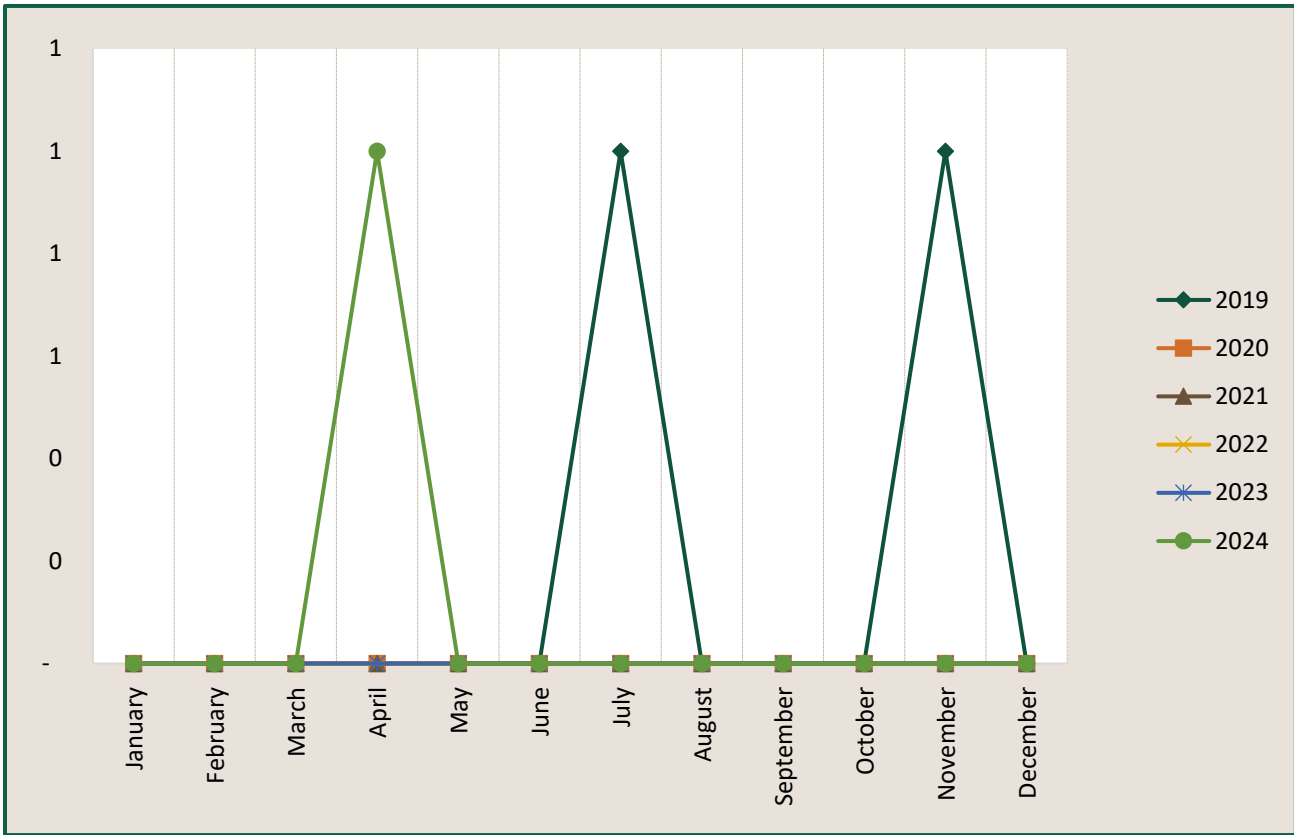
# SPOKANE COUNTY SHERIFF'S OFFICE

Regional Intelligence Group 9

## Robbery - Millwood



Time Period: November 2024



|                    | 2019     | 2020     | 2021     | 2022     | 2023     | 2024     |
|--------------------|----------|----------|----------|----------|----------|----------|
| January            | -        | -        | -        | -        | -        | -        |
| February           | -        | -        | -        | -        | -        | -        |
| March              | -        | -        | -        | -        | -        | -        |
| April              | -        | -        | -        | -        | -        | 1        |
| May                | -        | -        | -        | -        | -        | -        |
| June               | -        | -        | -        | -        | -        | -        |
| July               | 1        | -        | -        | -        | -        | -        |
| August             | -        | -        | -        | -        | -        | -        |
| September          | -        | -        | -        | -        | -        | -        |
| October            | -        | -        | -        | -        | -        | -        |
| November           | 1        | -        | -        | -        | -        | -        |
| December           | -        | -        | -        | -        | -        | -        |
| <b>Grand Total</b> | <b>2</b> | <b>-</b> | <b>-</b> | <b>-</b> | <b>-</b> | <b>1</b> |

\* IBR Offense: Robbery 120

Produced: 12/12/2024



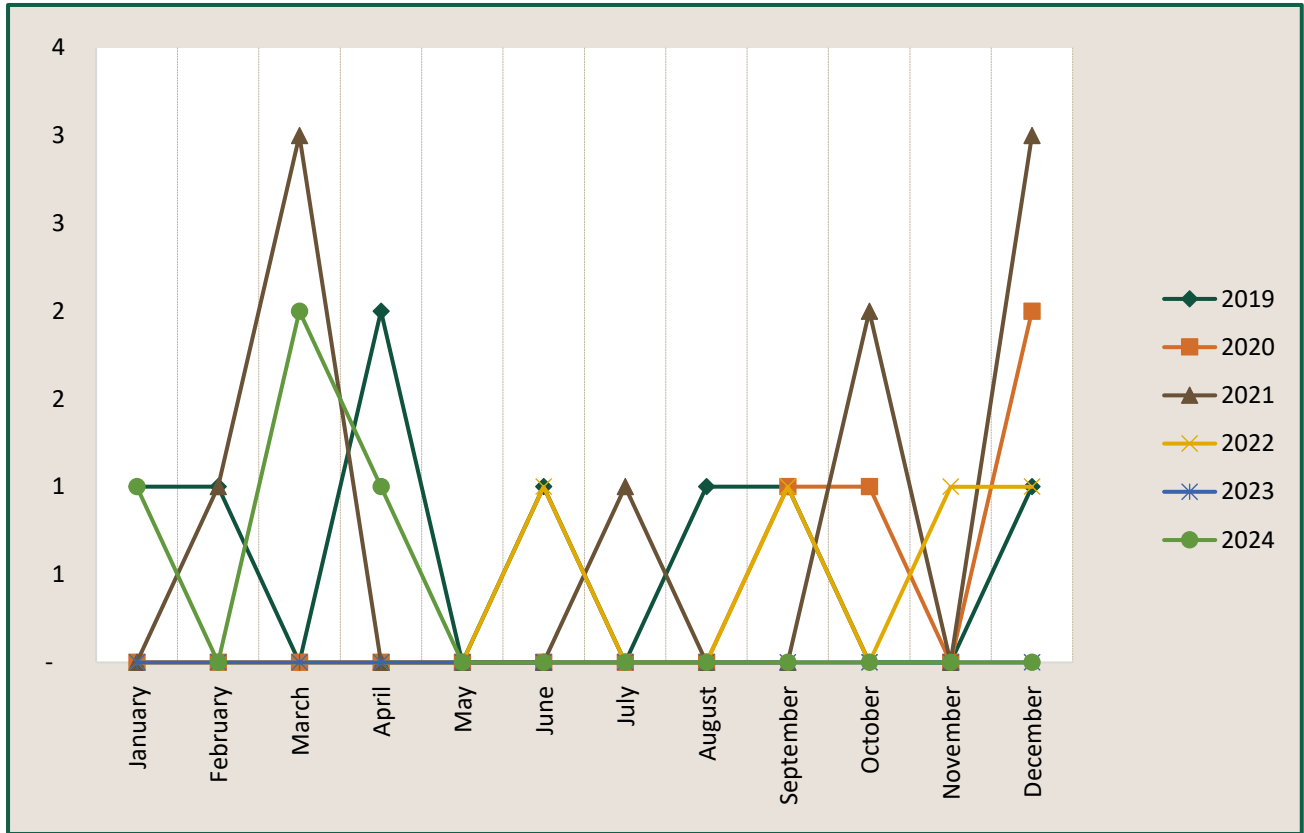
# SPOKANE COUNTY SHERIFF'S OFFICE

Regional Intelligence Group 9

## Motor Vehicle Theft - Millwood



Time Period: November 2024



|                    | 2019     | 2020     | 2021      | 2022     | 2023     | 2024     |
|--------------------|----------|----------|-----------|----------|----------|----------|
| January            | 1        | -        | -         | -        | -        | 1        |
| February           | 1        | -        | 1         | -        | -        | -        |
| March              | -        | -        | 3         | -        | -        | 2        |
| April              | 2        | -        | -         | -        | -        | 1        |
| May                | -        | -        | -         | -        | -        | -        |
| June               | 1        | -        | -         | 1        | -        | -        |
| July               | -        | -        | 1         | -        | -        | -        |
| August             | 1        | -        | -         | -        | -        | -        |
| September          | 1        | 1        | -         | 1        | -        | -        |
| October            | -        | 1        | 2         | -        | -        | -        |
| November           | -        | -        | -         | 1        | -        | -        |
| December           | 1        | 2        | 3         | 1        | -        | -        |
| <b>Grand Total</b> | <b>8</b> | <b>4</b> | <b>10</b> | <b>4</b> | <b>-</b> | <b>4</b> |

\* IBR Offense: Motor Vehicle Theft 240

Produced: 12/12/2024

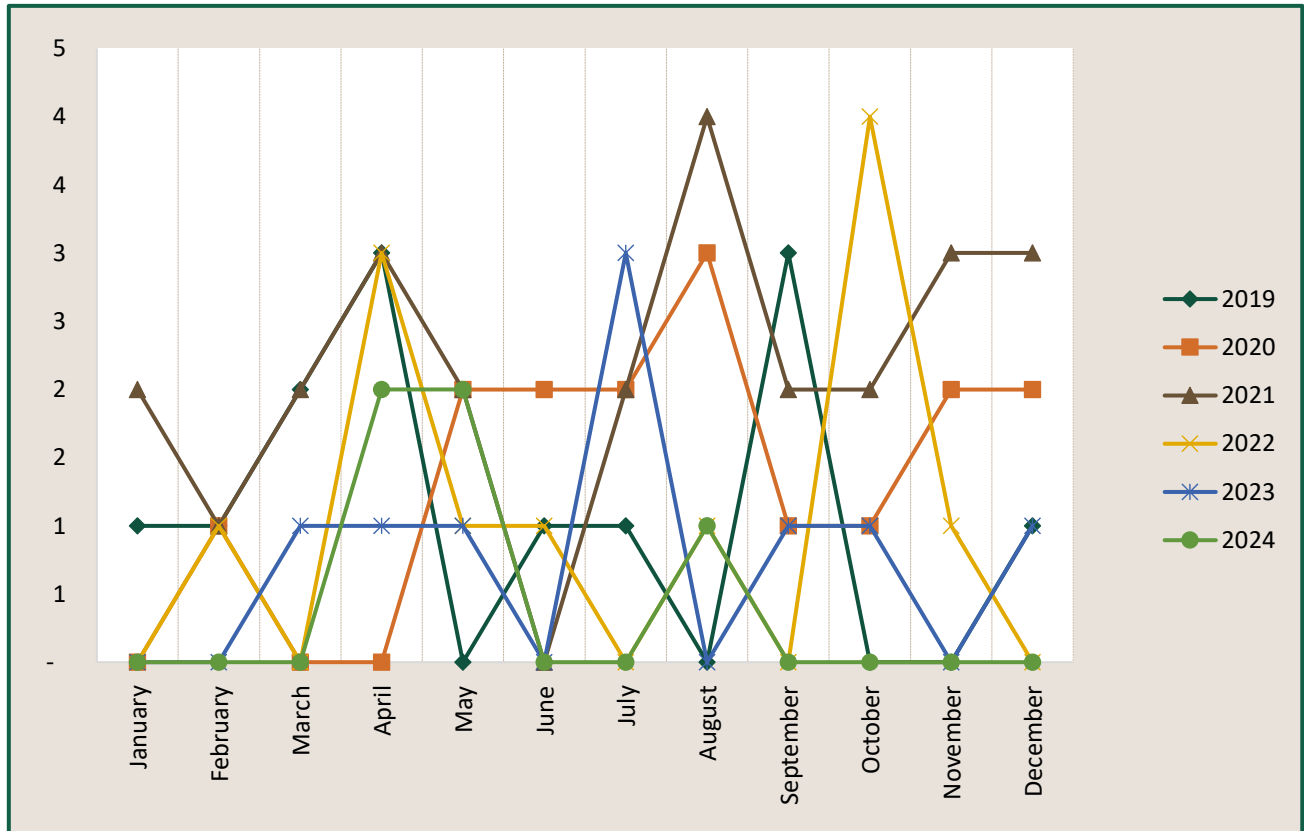
# SPOKANE COUNTY SHERIFF'S OFFICE

Regional Intelligence Group 9

## Theft From Motor Vehicle (Vehicle Prowl) - Millwood



Time Period: November 2024



|                    | 2019      | 2020      | 2021      | 2022      | 2023     | 2024     |
|--------------------|-----------|-----------|-----------|-----------|----------|----------|
| January            | 1         | -         | 2         | -         | -        | -        |
| February           | 1         | 1         | 1         | 1         | -        | -        |
| March              | 2         | -         | 2         | -         | 1        | -        |
| April              | 3         | -         | 3         | 3         | 1        | 2        |
| May                | -         | 2         | 2         | 1         | 1        | 2        |
| June               | 1         | 2         | -         | 1         | -        | -        |
| July               | 1         | 2         | 2         | -         | 3        | -        |
| August             | -         | 3         | 4         | 1         | -        | 1        |
| September          | 3         | 1         | 2         | -         | 1        | -        |
| October            | -         | 1         | 2         | 4         | 1        | -        |
| November           | -         | 2         | 3         | 1         | -        | -        |
| December           | 1         | 2         | 3         | -         | 1        | -        |
| <b>Grand Total</b> | <b>13</b> | <b>16</b> | <b>26</b> | <b>12</b> | <b>9</b> | <b>5</b> |

\* IBR Offense: Theft From Motor Vehicle 23F

Produced: 12/12/2024

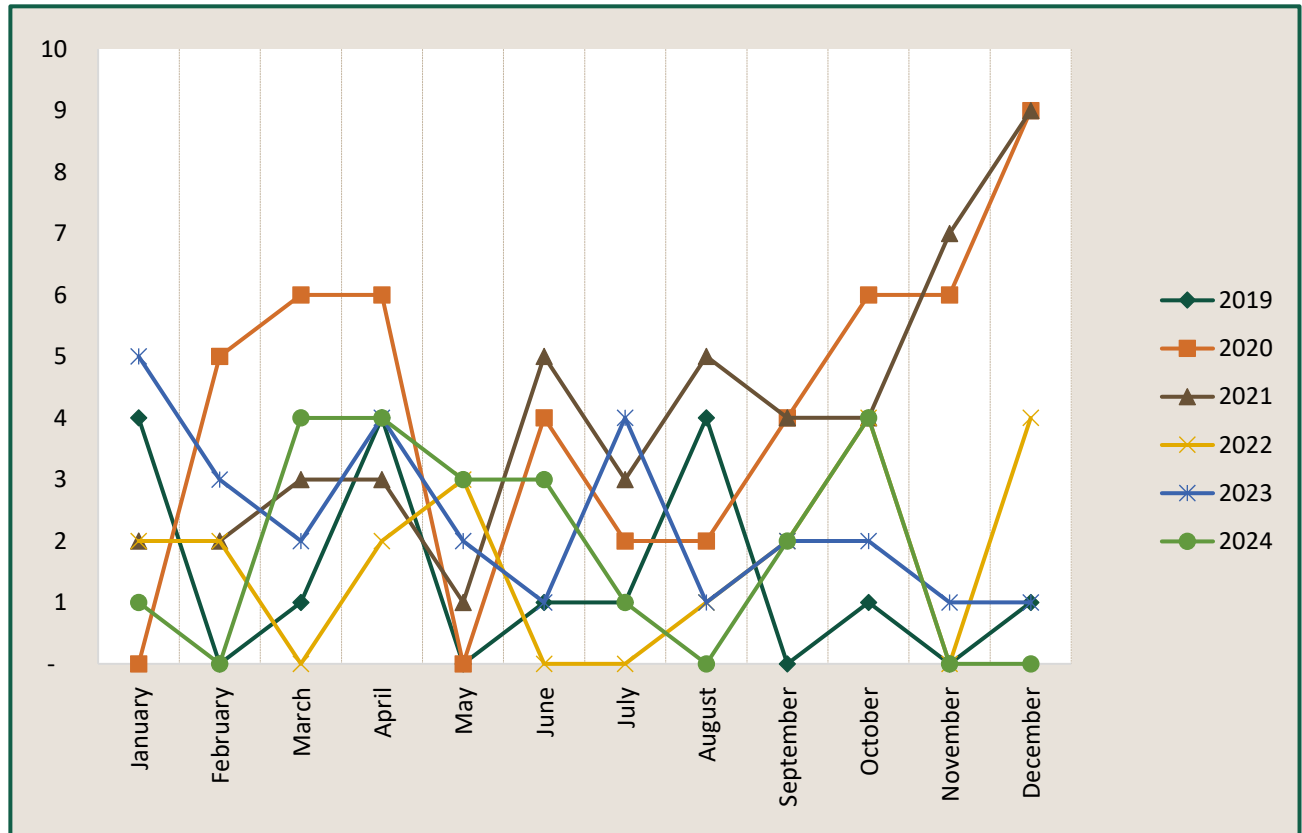
# SPOKANE COUNTY SHERIFF'S OFFICE

Regional Intelligence Group 9

## Damage/Destruction/Vandalism (MALMS) - Millwood



Time Period: November 2024



|                    | 2019      | 2020      | 2021      | 2022      | 2023      | 2024      |
|--------------------|-----------|-----------|-----------|-----------|-----------|-----------|
| January            | 4         | -         | 2         | 2         | 5         | 1         |
| February           | -         | 5         | 2         | 2         | 3         | -         |
| March              | 1         | 6         | 3         | -         | 2         | 4         |
| April              | 4         | 6         | 3         | 2         | 4         | 4         |
| May                | -         | -         | 1         | 3         | 2         | 3         |
| June               | 1         | 4         | 5         | -         | 1         | 3         |
| July               | 1         | 2         | 3         | -         | 4         | 1         |
| August             | 4         | 2         | 5         | 1         | 1         | -         |
| September          | -         | 4         | 4         | 2         | 2         | 2         |
| October            | 1         | 6         | 4         | 4         | 2         | 4         |
| November           | -         | 6         | 7         | -         | 1         | -         |
| December           | 1         | 9         | 9         | 4         | 1         | -         |
| <b>Grand Total</b> | <b>17</b> | <b>50</b> | <b>48</b> | <b>20</b> | <b>28</b> | <b>22</b> |

IBR Offense: Destruction/Damage/Vandalism 290

Produced: 12/12/2024

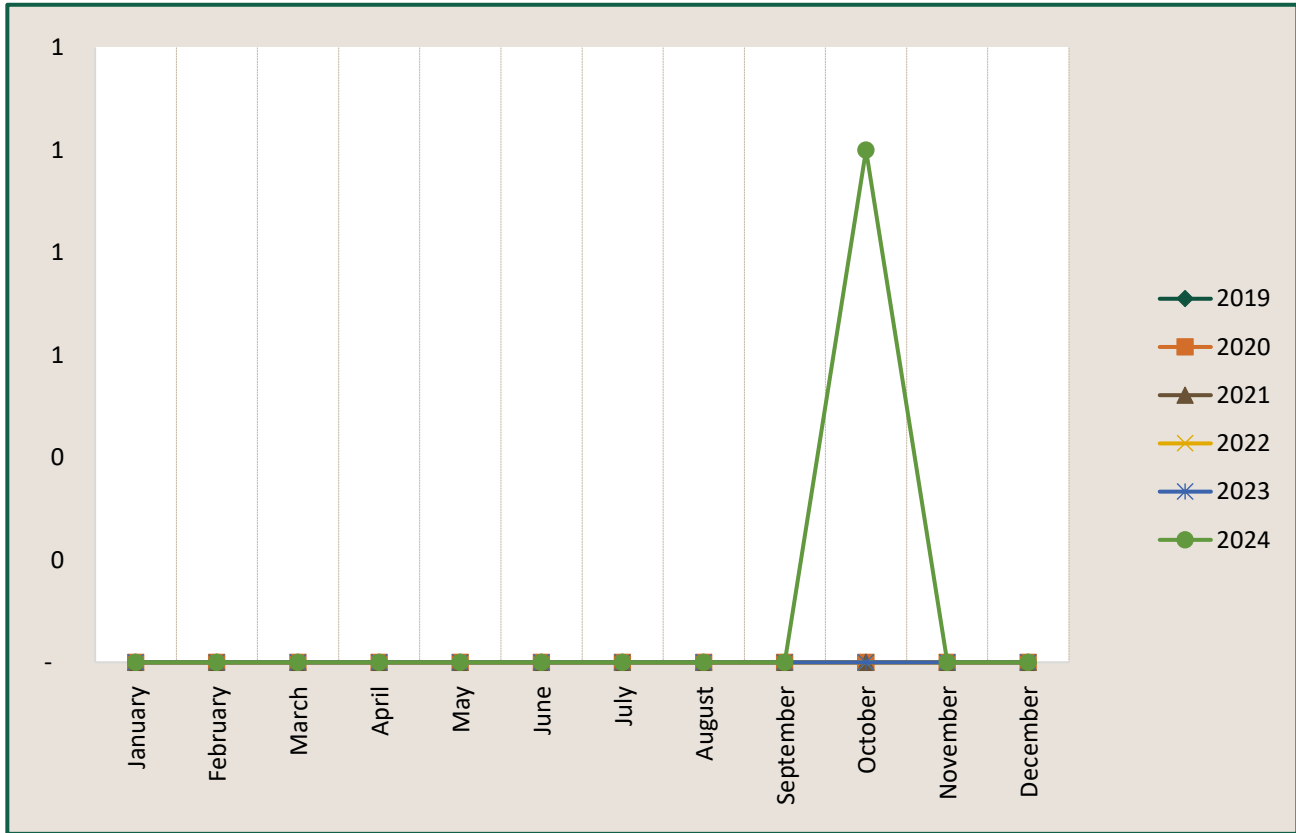
# SPOKANE COUNTY SHERIFF'S OFFICE

Regional Intelligence Group 9

## Homicide - Millwood



Time Period: November 2024



|                    | 2019 | 2020 | 2021 | 2022 | 2023 | 2024     |
|--------------------|------|------|------|------|------|----------|
| January            | -    | -    | -    | -    | -    | -        |
| February           | -    | -    | -    | -    | -    | -        |
| March              | -    | -    | -    | -    | -    | -        |
| April              | -    | -    | -    | -    | -    | -        |
| May                | -    | -    | -    | -    | -    | -        |
| June               | -    | -    | -    | -    | -    | -        |
| July               | -    | -    | -    | -    | -    | -        |
| August             | -    | -    | -    | -    | -    | -        |
| September          | -    | -    | -    | -    | -    | -        |
| October            | -    | -    | -    | -    | -    | 1        |
| November           | -    | -    | -    | -    | -    | -        |
| December           | -    | -    | -    | -    | -    | -        |
| <b>Grand Total</b> | -    | -    | -    | -    | -    | <b>1</b> |

\*IBR Offense: Murder/Non-Negligent Manslaughter 09A

Produced: 12/12/2024

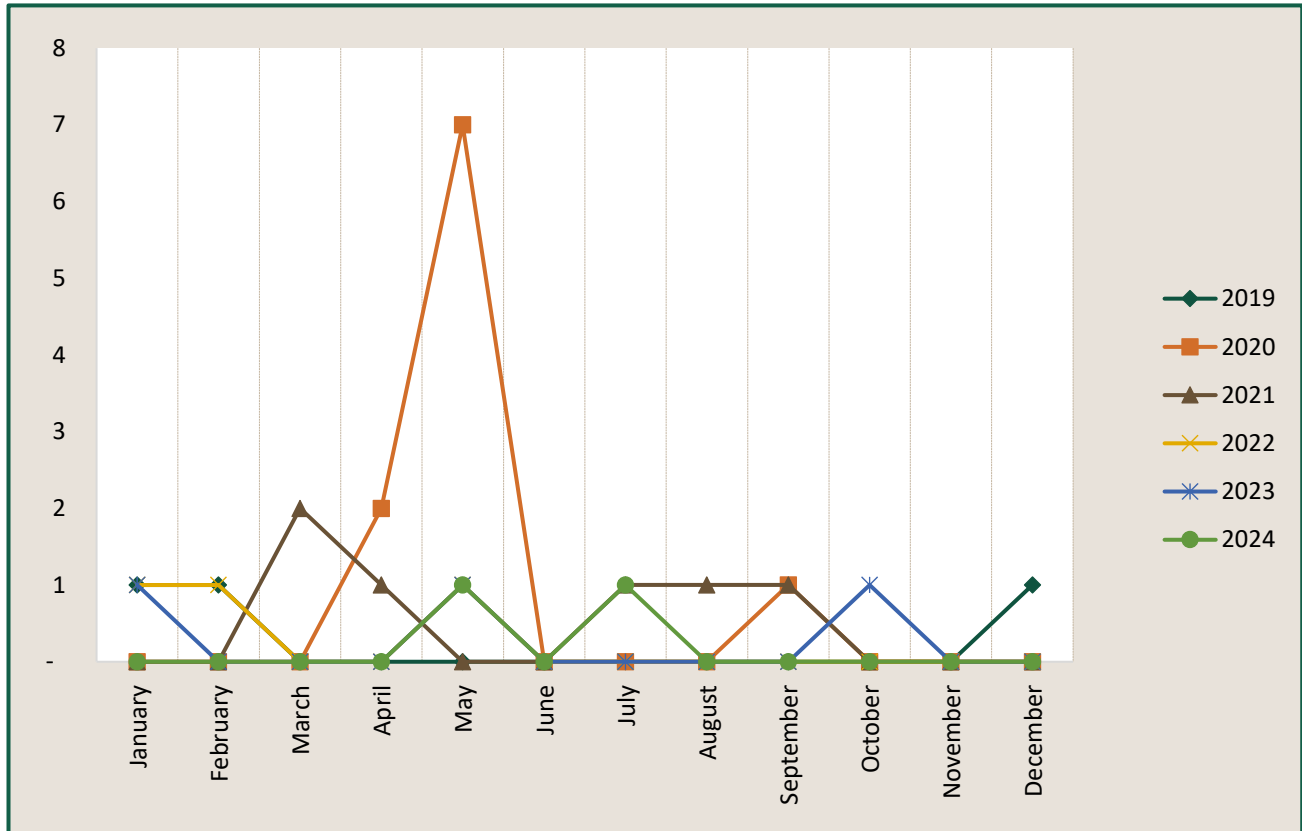
# SPOKANE COUNTY SHERIFF'S OFFICE

Regional Intelligence Group 9

## Identity Theft - Millwood



Time Period: November 2024



|                    | 2019     | 2020      | 2021     | 2022     | 2023     | 2024     |
|--------------------|----------|-----------|----------|----------|----------|----------|
| January            | 1        | -         | -        | 1        | 1        | -        |
| February           | 1        | -         | -        | 1        | -        | -        |
| March              | -        | -         | 2        | -        | -        | -        |
| April              | -        | 2         | 1        | -        | -        | -        |
| May                | -        | 7         | -        | 1        | 1        | 1        |
| June               | -        | -         | -        | -        | -        | -        |
| July               | -        | -         | 1        | -        | -        | 1        |
| August             | -        | -         | 1        | -        | -        | -        |
| September          | -        | 1         | 1        | -        | -        | -        |
| October            | -        | -         | -        | -        | 1        | -        |
| November           | -        | -         | -        | -        | -        | -        |
| December           | 1        | -         | -        | -        | -        | -        |
| <b>Grand Total</b> | <b>3</b> | <b>10</b> | <b>6</b> | <b>3</b> | <b>3</b> | <b>2</b> |

\*IBR Offense: Identity Theft 26F

Produced: 12/12/2024

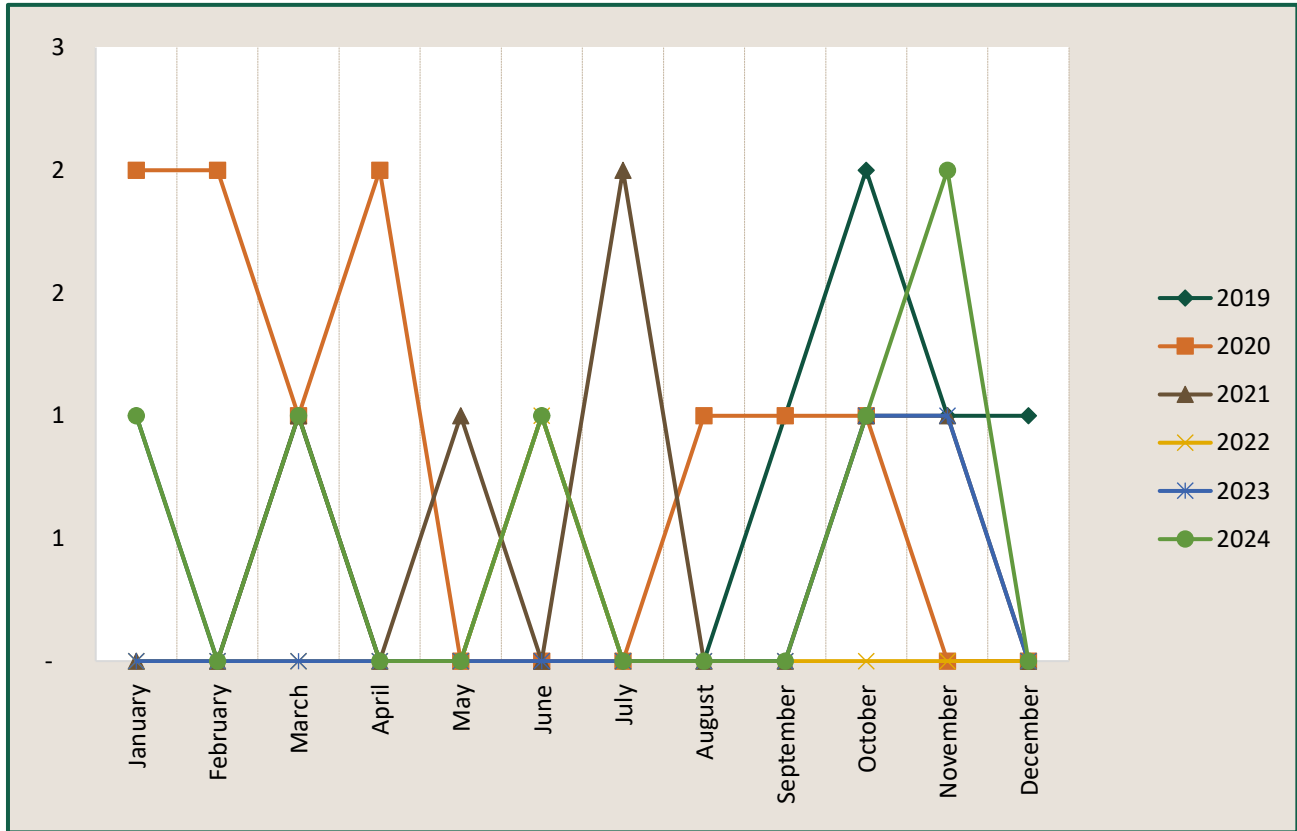
# SPOKANE COUNTY SHERIFF'S OFFICE

Regional Intelligence Group 9

## DUI - Millwood



Time Period: November 2024



|                    | 2019     | 2020      | 2021     | 2022     | 2023     | 2024     |
|--------------------|----------|-----------|----------|----------|----------|----------|
| January            | 1        | 2         | -        | -        | -        | 1        |
| February           | -        | 2         | -        | -        | -        | -        |
| March              | 1        | 1         | 1        | -        | -        | 1        |
| April              | -        | 2         | -        | -        | -        | -        |
| May                | -        | -         | 1        | -        | -        | -        |
| June               | 1        | -         | -        | 1        | -        | 1        |
| July               | -        | -         | 2        | -        | -        | -        |
| August             | -        | 1         | -        | -        | -        | -        |
| September          | 1        | 1         | -        | -        | -        | -        |
| October            | 2        | 1         | 1        | -        | 1        | 1        |
| November           | 1        | -         | 1        | -        | 1        | 2        |
| December           | 1        | -         | -        | -        | -        | -        |
| <b>Grand Total</b> | <b>8</b> | <b>10</b> | <b>6</b> | <b>1</b> | <b>2</b> | <b>6</b> |

\* IBR Offense: DUI 90D

Produced: 12/12/2024

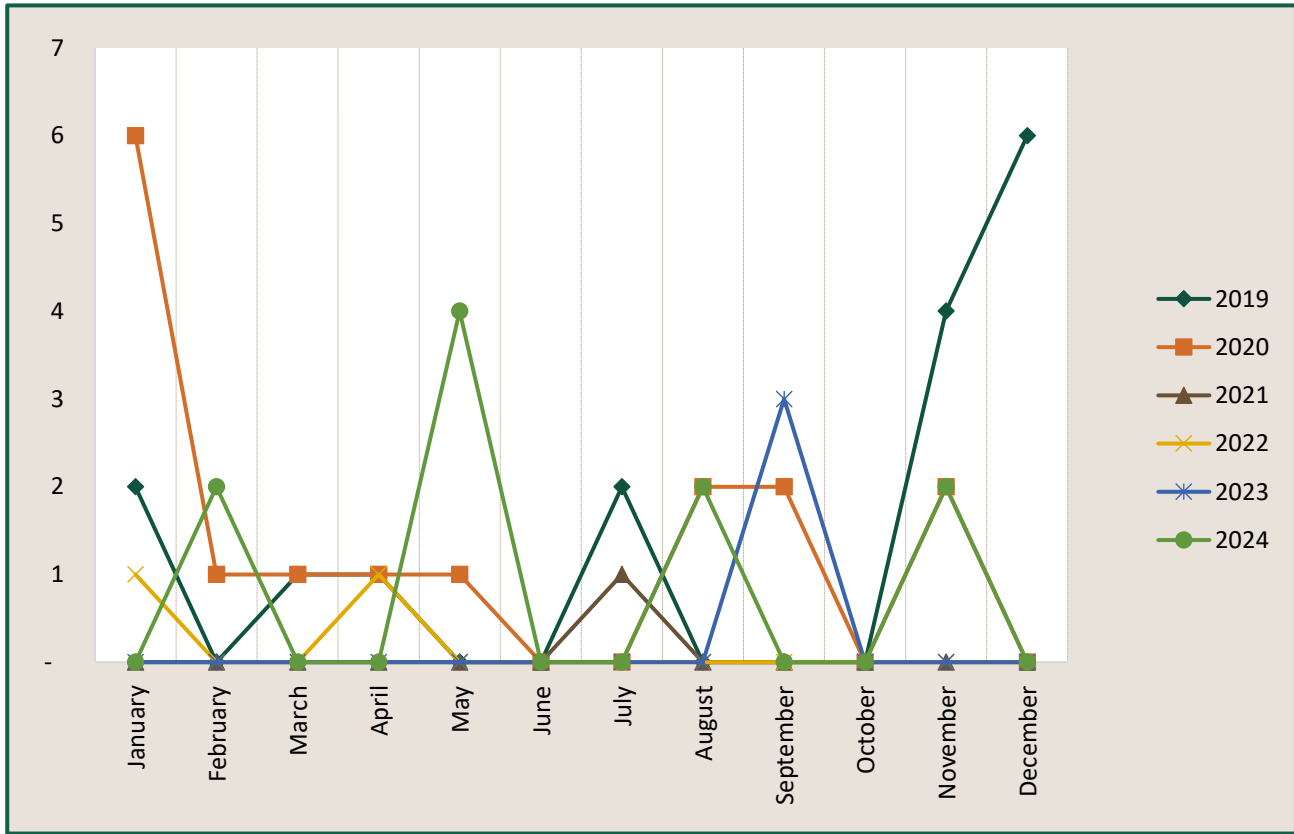
# SPOKANE COUNTY SHERIFF'S OFFICE

Regional Intelligence Group 9

## Drugs - Millwood



Time Period: November 2024



|                    | 2019      | 2020      | 2021     | 2022     | 2023     | 2024      |
|--------------------|-----------|-----------|----------|----------|----------|-----------|
| January            | 2         | 6         | -        | 1        | -        | -         |
| February           | -         | 1         | -        | -        | -        | 2         |
| March              | 1         | 1         | -        | -        | -        | -         |
| April              | 1         | 1         | -        | 1        | -        | -         |
| May                | -         | 1         | -        | -        | -        | 4         |
| June               | -         | -         | -        | -        | -        | -         |
| July               | 2         | -         | 1        | -        | -        | -         |
| August             | -         | 2         | -        | -        | -        | 2         |
| September          | -         | 2         | -        | -        | 3        | -         |
| October            | -         | -         | -        | -        | -        | -         |
| November           | 4         | 2         | -        | -        | -        | 2         |
| December           | 6         | -         | -        | -        | -        | -         |
| <b>Grand Total</b> | <b>16</b> | <b>16</b> | <b>1</b> | <b>2</b> | <b>3</b> | <b>10</b> |

\* IBR Offense: Drugs/Narcotics Violations 35A and Drug Equipment Violations 35B

Produced: 12/12/2024

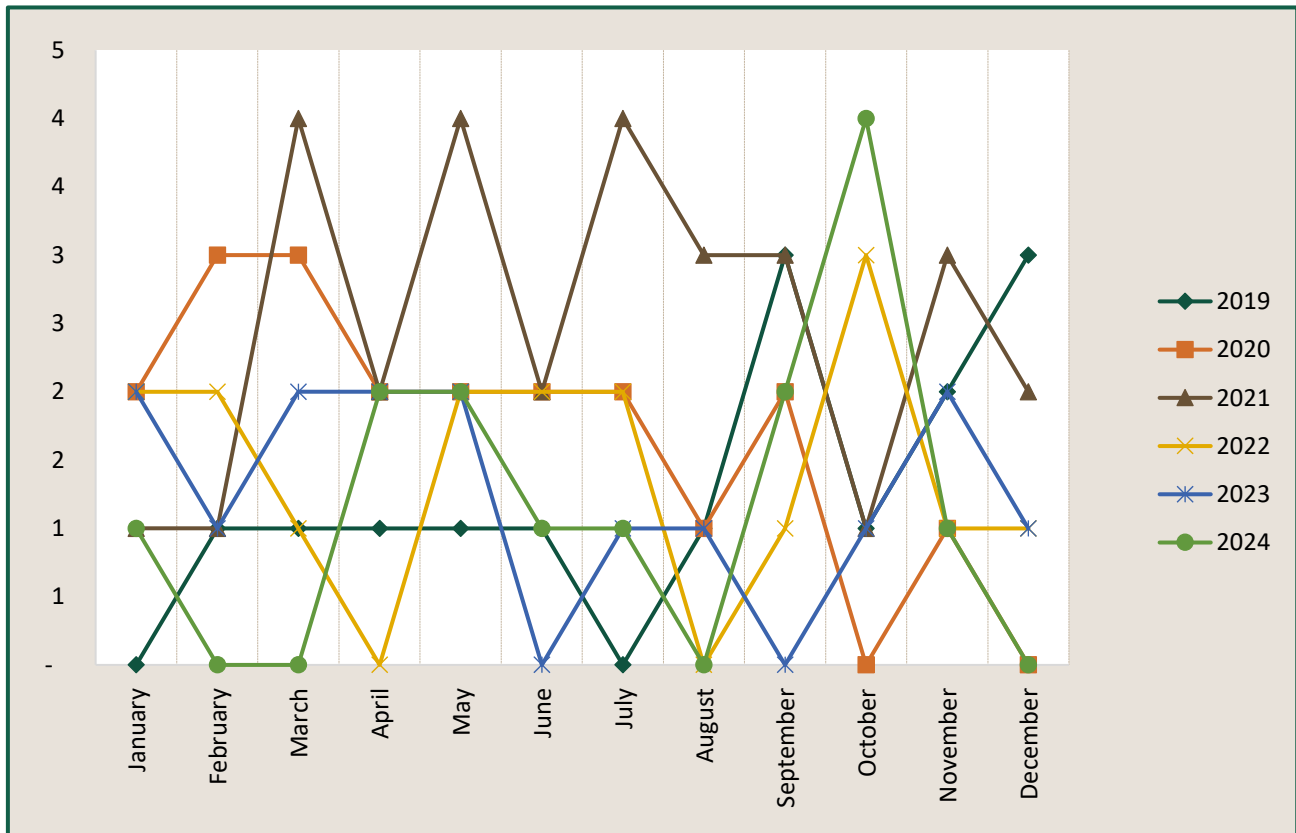
# SPOKANE COUNTY SHERIFF'S OFFICE

Regional Intelligence Group 9

## Fraud - Millwood



Time Period: November 2024



|                    | 2019      | 2020      | 2021      | 2022      | 2023      | 2024      |
|--------------------|-----------|-----------|-----------|-----------|-----------|-----------|
| January            | -         | 2         | 1         | 2         | 2         | 1         |
| February           | 1         | 3         | 1         | 2         | 1         | -         |
| March              | 1         | 3         | 4         | 1         | 2         | -         |
| April              | 1         | 2         | 2         | -         | 2         | 2         |
| May                | 1         | 2         | 4         | 2         | 2         | 2         |
| June               | 1         | 2         | 2         | 2         | -         | 1         |
| July               | -         | 2         | 4         | 2         | 1         | 1         |
| August             | 1         | 1         | 3         | -         | 1         | -         |
| September          | 3         | 2         | 3         | 1         | -         | 2         |
| October            | 1         | -         | 1         | 3         | 1         | 4         |
| November           | 2         | 1         | 3         | 1         | 2         | 1         |
| December           | 3         | -         | 2         | 1         | 1         | -         |
| <b>Grand Total</b> | <b>15</b> | <b>20</b> | <b>30</b> | <b>17</b> | <b>15</b> | <b>14</b> |

\* IBR Offense: Pretenses/Swindling/Con Games 26A, Fraud - Credit Card/ATM 26B, and Fraud - False & Fraud - Impersonation 26C

Produced: 12/12/2024



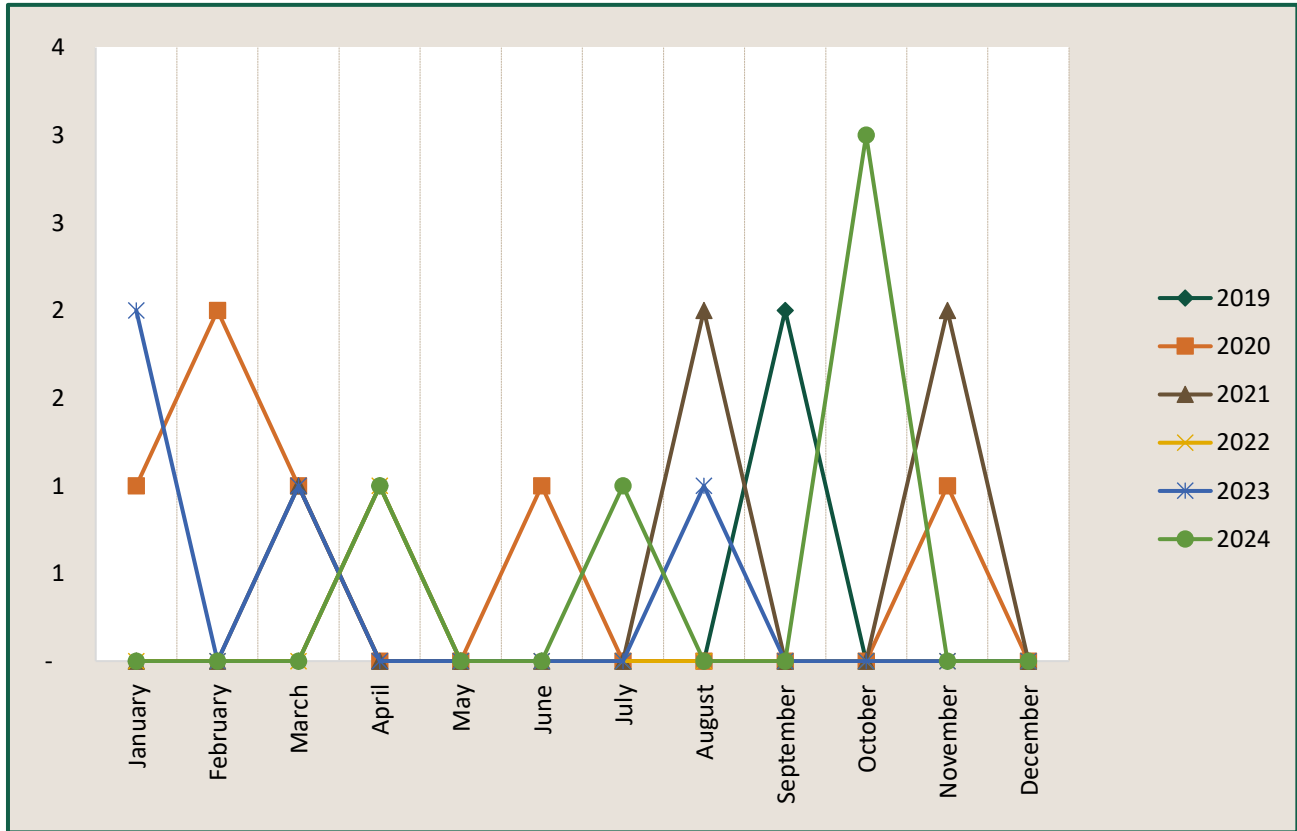
# SPOKANE COUNTY SHERIFF'S OFFICE

Regional Intelligence Group 9

## Forgery - Millwood



Time Period: November 2024



|                    | 2019     | 2020     | 2021     | 2022     | 2023     | 2024     |
|--------------------|----------|----------|----------|----------|----------|----------|
| January            | -        | 1        | -        | -        | 2        | -        |
| February           | -        | 2        | -        | -        | -        | -        |
| March              | -        | 1        | 1        | -        | 1        | -        |
| April              | 1        | -        | -        | 1        | -        | 1        |
| May                | -        | -        | -        | -        | -        | -        |
| June               | -        | 1        | -        | -        | -        | -        |
| July               | -        | -        | -        | -        | -        | 1        |
| August             | -        | -        | 2        | -        | 1        | -        |
| September          | 2        | -        | -        | -        | -        | -        |
| October            | -        | -        | -        | -        | -        | 3        |
| November           | -        | 1        | 2        | -        | -        | -        |
| December           | -        | -        | -        | -        | -        | -        |
| <b>Grand Total</b> | <b>3</b> | <b>6</b> | <b>5</b> | <b>1</b> | <b>4</b> | <b>5</b> |

\*IBR Offense: Counterfeiting/Forgery 250

Produced: 12/12/2024

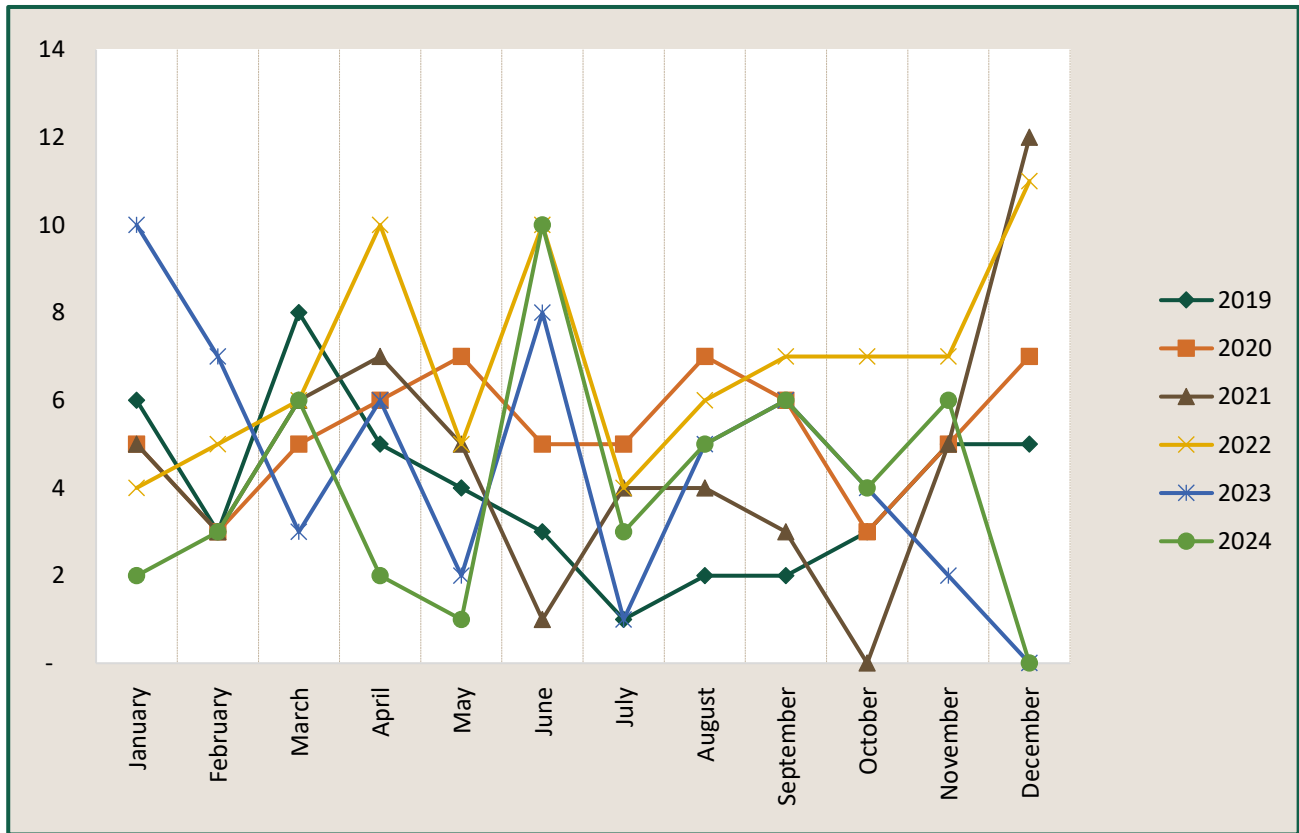
# SPOKANE COUNTY SHERIFF'S OFFICE

Regional Intelligence Group 9

## Theft - Millwood



Time Period: November 2024



|                    | 2019      | 2020      | 2021      | 2022      | 2023      | 2024      |
|--------------------|-----------|-----------|-----------|-----------|-----------|-----------|
| January            | 6         | 5         | 5         | 4         | 10        | 2         |
| February           | 3         | 3         | 3         | 5         | 7         | 3         |
| March              | 8         | 5         | 6         | 6         | 3         | 6         |
| April              | 5         | 6         | 7         | 10        | 6         | 2         |
| May                | 4         | 7         | 5         | 5         | 2         | 1         |
| June               | 3         | 5         | 1         | 10        | 8         | 10        |
| July               | 1         | 5         | 4         | 4         | 1         | 3         |
| August             | 2         | 7         | 4         | 6         | 5         | 5         |
| September          | 2         | 6         | 3         | 7         | 6         | 6         |
| October            | 3         | 3         | -         | 7         | 4         | 4         |
| November           | 5         | 5         | 5         | 7         | 2         | 6         |
| December           | 5         | 7         | 12        | 11        | -         | -         |
| <b>Grand Total</b> | <b>47</b> | <b>64</b> | <b>55</b> | <b>82</b> | <b>54</b> | <b>48</b> |

\* IBR Offense: Theft - Pocket-Picking 23A, Theft - Purse-Snatching 23B, Theft - Shoplifting 23C, Theft From Building 23D, Theft From Coin-Operated Machine 23E, Theft of Motor Vehicle Parts/Accessories 23G, and Theft-All Other 23H

Produced: 12/12/2024

# SPOKANE COUNTY SHERIFF'S OFFICE

Regional Intelligence Group 9

## Call Activity Heat Maps - Millwood



November 2024

Citizen Calls by Day of Week and Hour

|       | Sunday | Monday | Tuesday | Wednesday | Thursday | Friday | Saturday | Total |
|-------|--------|--------|---------|-----------|----------|--------|----------|-------|
| 0     | 1      | 1      |         |           | 1        |        | 1        | 4     |
| 3     |        |        |         |           |          |        | 1        | 1     |
| 5     |        | 1      | 1       |           |          |        |          | 2     |
| 6     |        |        | 1       |           |          |        | 1        | 2     |
| 7     | 1      |        | 1       |           |          |        |          | 2     |
| 8     |        | 1      | 2       | 1         | 1        |        |          | 5     |
| 9     |        |        | 1       |           |          |        | 1        | 2     |
| 10    |        |        |         |           |          | 2      |          | 2     |
| 11    | 1      |        | 2       |           |          | 1      |          | 4     |
| 12    | 1      | 2      |         | 1         | 1        |        |          | 5     |
| 13    |        | 1      | 1       |           |          |        |          | 2     |
| 14    |        |        | 1       | 2         |          |        | 1        | 4     |
| 15    |        | 1      | 1       | 1         | 1        | 3      |          | 7     |
| 16    | 1      | 2      |         | 1         |          |        |          | 4     |
| 17    |        |        |         | 1         | 1        |        | 1        | 3     |
| 18    | 2      |        |         |           |          |        |          | 2     |
| 19    |        | 1      |         |           | 1        |        |          | 2     |
| 20    |        |        | 2       |           | 1        |        |          | 3     |
| 21    |        |        |         |           | 1        |        |          | 1     |
| 22    |        |        |         | 1         |          | 1      |          | 2     |
| 23    |        |        |         |           |          | 1      | 1        | 2     |
| Total | 7      | 10     | 13      | 8         | 8        | 8      | 7        | 61    |

Total Deputy Involved Incidents by Day of Week and Hour

|       | Sunday | Monday | Tuesday | Wednesday | Thursday | Friday | Saturday | Total |
|-------|--------|--------|---------|-----------|----------|--------|----------|-------|
| 0     | 1      | 2      |         |           | 1        |        | 3        | 7     |
| 1     |        |        | 1       |           | 1        |        |          | 2     |
| 3     |        |        |         |           |          |        | 2        | 2     |
| 5     |        | 1      |         |           |          |        |          | 1     |
| 6     | 1      |        |         |           |          | 1      | 1        | 3     |
| 7     | 1      |        | 1       |           |          |        |          | 2     |
| 8     |        | 1      | 1       |           | 1        | 1      |          | 4     |
| 9     |        | 1      | 1       |           |          |        |          | 2     |
| 10    |        |        |         |           |          |        | 1        | 1     |
| 11    |        |        | 2       |           |          |        |          | 2     |
| 12    | 1      | 2      | 1       | 3         | 1        |        |          | 8     |
| 13    |        | 1      | 1       |           |          |        |          | 2     |
| 14    |        |        | 1       | 1         |          |        |          | 2     |
| 15    |        | 1      | 1       |           |          | 2      |          | 4     |
| 16    | 1      |        | 1       |           |          | 1      |          | 3     |
| 17    |        |        | 1       | 1         | 1        |        | 1        | 4     |
| 18    |        |        | 1       |           |          |        | 1        | 2     |
| 19    |        | 1      |         |           | 1        |        |          | 2     |
| 20    |        | 1      | 2       |           |          |        | 1        | 4     |
| 21    |        | 1      | 1       |           | 1        |        |          | 3     |
| 22    |        |        |         | 1         |          | 1      |          | 2     |
| 23    |        |        |         | 1         |          |        | 1        | 2     |
| Total | 5      | 12     | 16      | 7         | 7        | 6      | 11       | 64    |

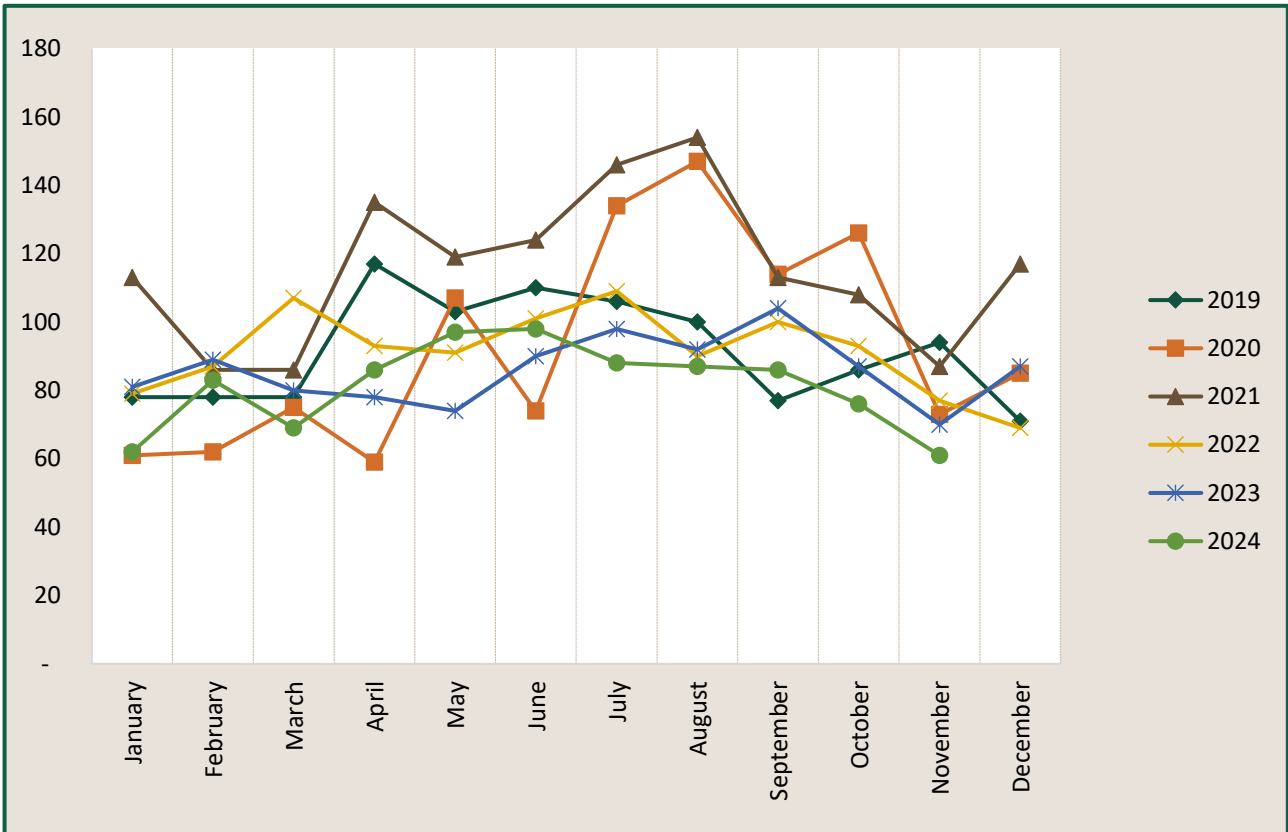
# SPOKANE COUNTY SHERIFF'S OFFICE

Regional Intelligence Group 9

## Citizen Initiated Call For Service (CFS) - Millwood



Time Period: November 2024



|                    | 2019         | 2020         | 2021         | 2022         | 2023         | 2024       |
|--------------------|--------------|--------------|--------------|--------------|--------------|------------|
| January            | 78           | 61           | 113          | 79           | 81           | 62         |
| February           | 78           | 62           | 86           | 87           | 89           | 83         |
| March              | 78           | 75           | 86           | 107          | 80           | 69         |
| April              | 117          | 59           | 135          | 93           | 78           | 86         |
| May                | 103          | 107          | 119          | 91           | 74           | 97         |
| June               | 110          | 74           | 124          | 101          | 90           | 98         |
| July               | 106          | 134          | 146          | 109          | 98           | 88         |
| August             | 100          | 147          | 154          | 90           | 92           | 87         |
| September          | 77           | 114          | 113          | 100          | 104          | 86         |
| October            | 86           | 126          | 108          | 93           | 87           | 76         |
| November           | 94           | 73           | 87           | 77           | 70           | 61         |
| December           | 71           | 85           | 117          | 69           | 87           |            |
| <b>Grand Total</b> | <b>1,098</b> | <b>1,117</b> | <b>1,388</b> | <b>1,096</b> | <b>1,030</b> | <b>893</b> |

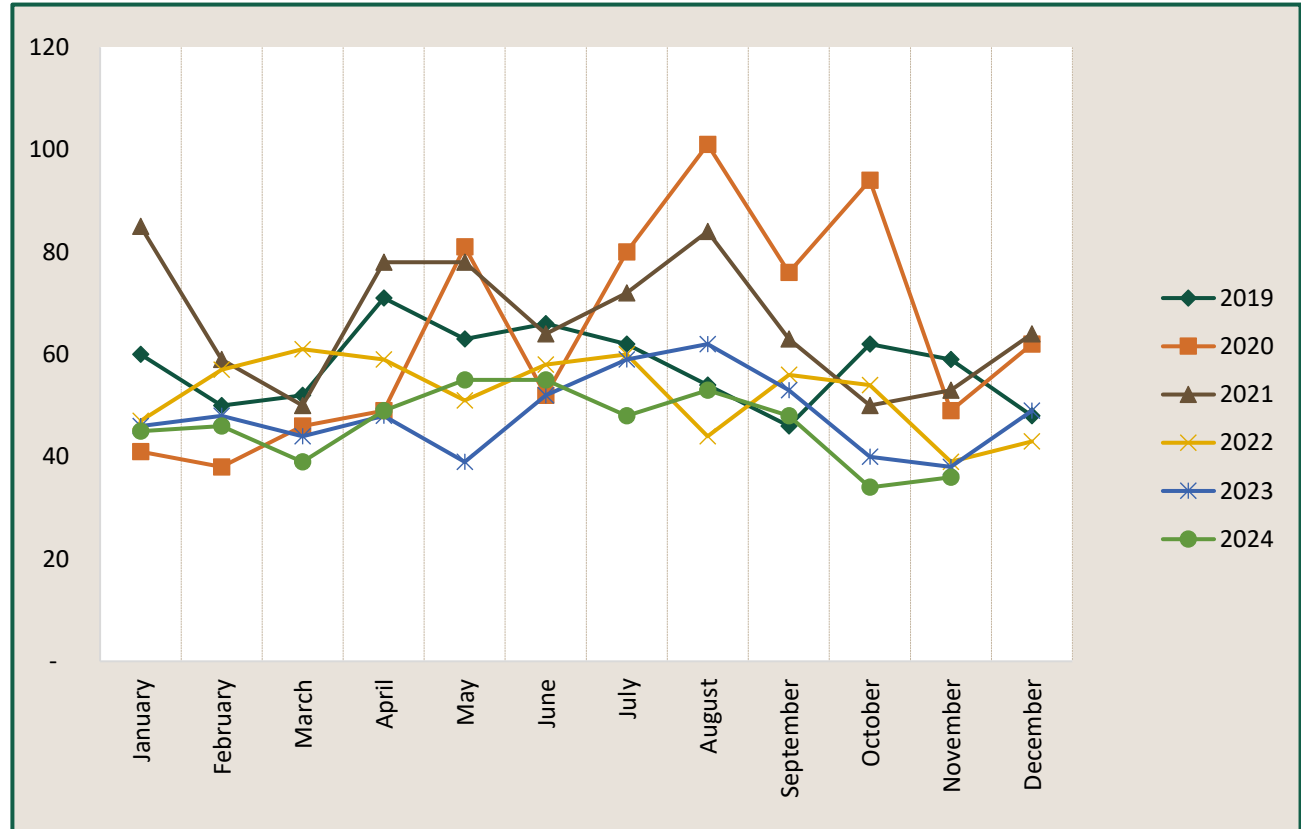
# SPOKANE COUNTY SHERIFF'S OFFICE

Regional Intelligence Group 9

## Citizen CFS With Deputy Response - Millwood



Time Period: November 2024



|                    | 2019       | 2020       | 2021       | 2022       | 2023       | 2024       |
|--------------------|------------|------------|------------|------------|------------|------------|
| January            | 60         | 41         | 85         | 47         | 46         | 45         |
| February           | 50         | 38         | 59         | 57         | 48         | 46         |
| March              | 52         | 46         | 50         | 61         | 44         | 39         |
| April              | 71         | 49         | 78         | 59         | 48         | 49         |
| May                | 63         | 81         | 78         | 51         | 39         | 55         |
| June               | 66         | 52         | 64         | 58         | 52         | 55         |
| July               | 62         | 80         | 72         | 60         | 59         | 48         |
| August             | 54         | 101        | 84         | 44         | 62         | 53         |
| September          | 46         | 76         | 63         | 56         | 53         | 48         |
| October            | 62         | 94         | 50         | 54         | 40         | 34         |
| November           | 59         | 49         | 53         | 39         | 38         | 36         |
| December           | 48         | 62         | 64         | 43         | 49         |            |
| <b>Grand Total</b> | <b>693</b> | <b>769</b> | <b>800</b> | <b>629</b> | <b>578</b> | <b>508</b> |

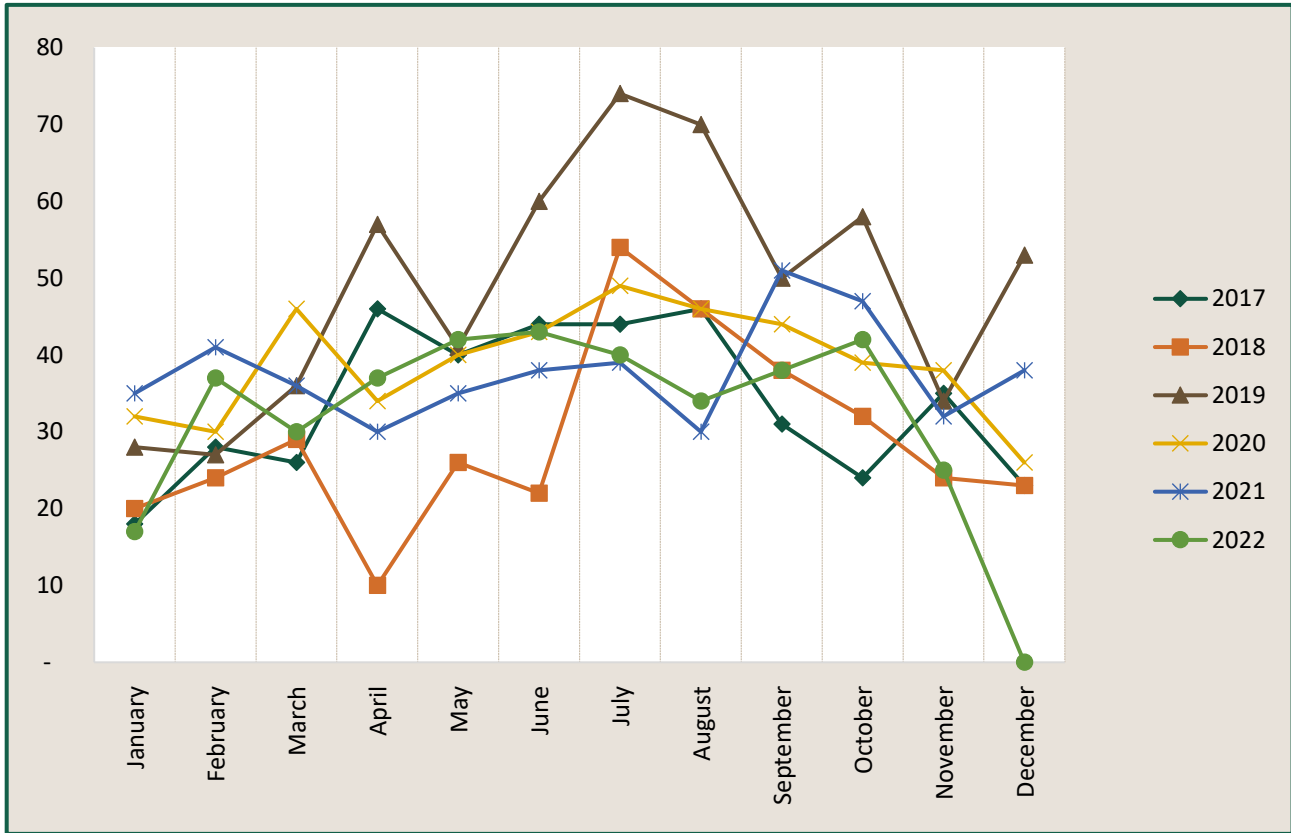
# SPOKANE COUNTY SHERIFF'S OFFICE

Regional Intelligence Group 9

## Citizen CFS Without Deputy Response - Millwood



Time Period: November 2024



|                    | 2019       | 2020       | 2021       | 2022       | 2023       | 2024       |
|--------------------|------------|------------|------------|------------|------------|------------|
| January            | 18         | 20         | 28         | 32         | 35         | 17         |
| February           | 28         | 24         | 27         | 30         | 41         | 37         |
| March              | 26         | 29         | 36         | 46         | 36         | 30         |
| April              | 46         | 10         | 57         | 34         | 30         | 37         |
| May                | 40         | 26         | 41         | 40         | 35         | 42         |
| June               | 44         | 22         | 60         | 43         | 38         | 43         |
| July               | 44         | 54         | 74         | 49         | 39         | 40         |
| August             | 46         | 46         | 70         | 46         | 30         | 34         |
| September          | 31         | 38         | 50         | 44         | 51         | 38         |
| October            | 24         | 32         | 58         | 39         | 47         | 42         |
| November           | 35         | 24         | 34         | 38         | 32         | 25         |
| December           | 23         | 23         | 53         | 26         | 38         |            |
| <b>Grand Total</b> | <b>405</b> | <b>348</b> | <b>588</b> | <b>467</b> | <b>452</b> | <b>385</b> |

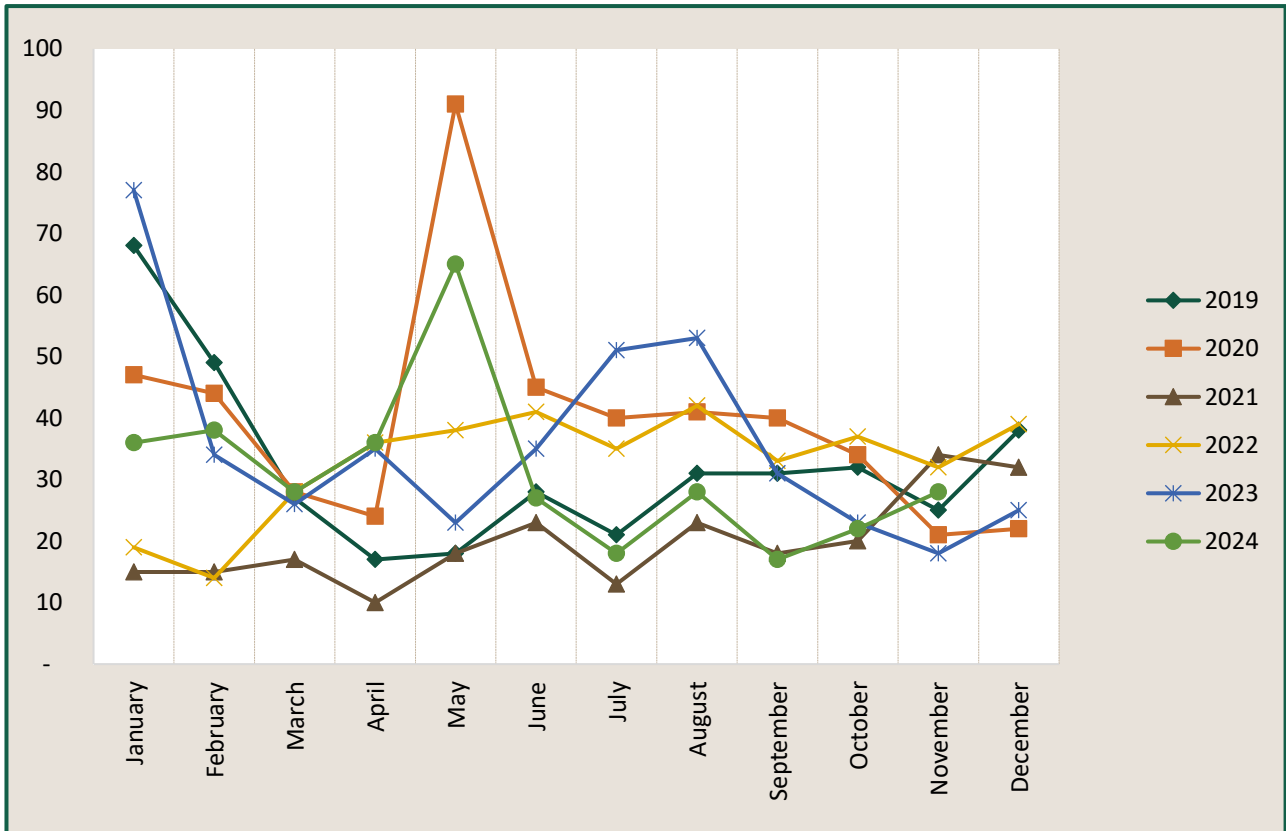
# SPOKANE COUNTY SHERIFF'S OFFICE

Regional Intelligence Group 9

## Deputy Initiated Incidents - Millwood



Time Period: November 2024



|                    | 2019       | 2020       | 2021       | 2022       | 2023       | 2024       |
|--------------------|------------|------------|------------|------------|------------|------------|
| January            | 68         | 47         | 15         | 19         | 77         | 36         |
| February           | 49         | 44         | 15         | 14         | 34         | 38         |
| March              | 27         | 28         | 17         | 28         | 26         | 28         |
| April              | 17         | 24         | 10         | 36         | 35         | 36         |
| May                | 18         | 91         | 18         | 38         | 23         | 65         |
| June               | 28         | 45         | 23         | 41         | 35         | 27         |
| July               | 21         | 40         | 13         | 35         | 51         | 18         |
| August             | 31         | 41         | 23         | 42         | 53         | 28         |
| September          | 31         | 40         | 18         | 33         | 31         | 17         |
| October            | 32         | 34         | 20         | 37         | 23         | 22         |
| November           | 25         | 21         | 34         | 32         | 18         | 28         |
| December           | 38         | 22         | 32         | 39         | 25         |            |
| <b>Grand Total</b> | <b>385</b> | <b>477</b> | <b>238</b> | <b>394</b> | <b>431</b> | <b>343</b> |

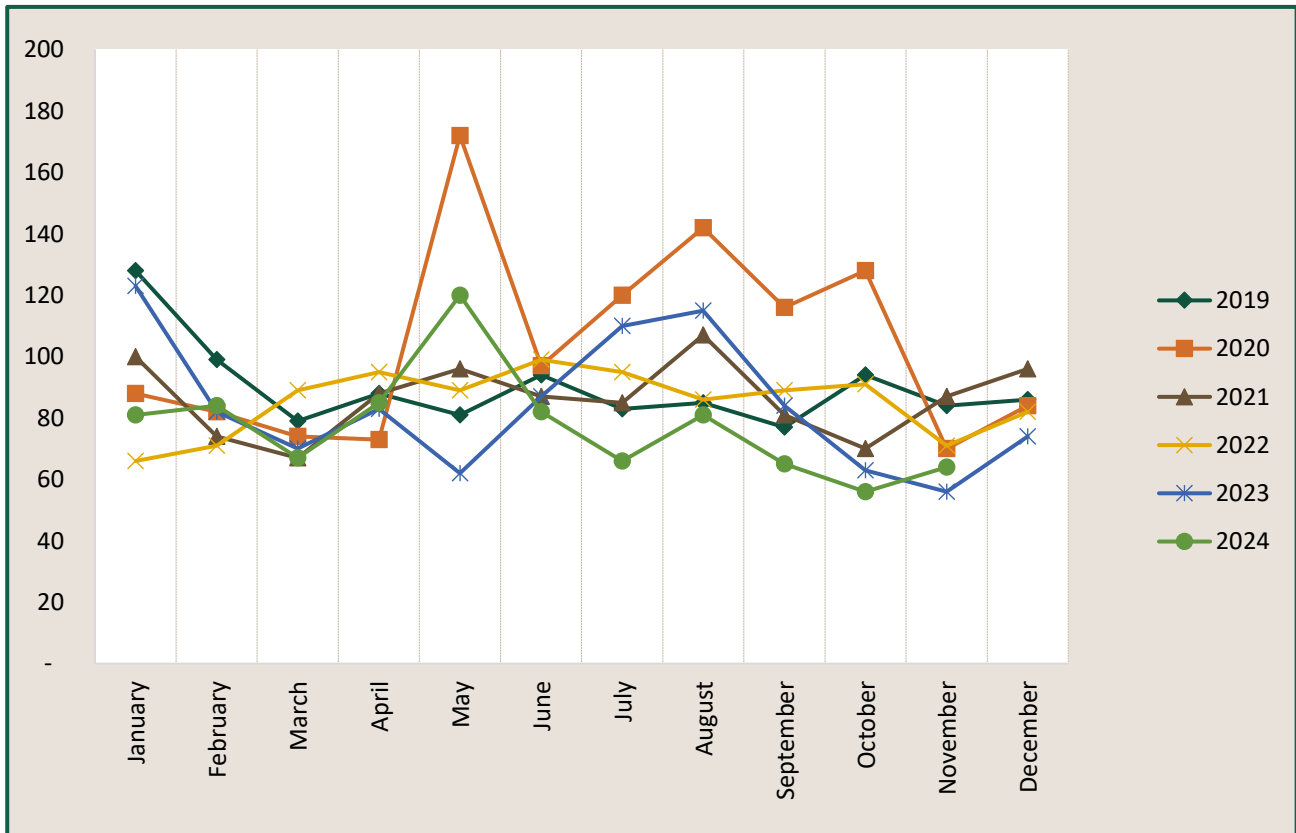
# SPOKANE COUNTY SHERIFF'S OFFICE

Regional Intelligence Group 9

## Total Deputy Involved Incidents - Millwood



Time Period: November 2024



|                    | 2019         | 2020         | 2021         | 2022         | 2023         | 2024       |
|--------------------|--------------|--------------|--------------|--------------|--------------|------------|
| January            | 128          | 88           | 100          | 66           | 123          | 81         |
| February           | 99           | 82           | 74           | 71           | 82           | 84         |
| March              | 79           | 74           | 67           | 89           | 70           | 67         |
| April              | 88           | 73           | 88           | 95           | 83           | 85         |
| May                | 81           | 172          | 96           | 89           | 62           | 120        |
| June               | 94           | 97           | 87           | 99           | 87           | 82         |
| July               | 83           | 120          | 85           | 95           | 110          | 66         |
| August             | 85           | 142          | 107          | 86           | 115          | 81         |
| September          | 77           | 116          | 81           | 89           | 84           | 65         |
| October            | 94           | 128          | 70           | 91           | 63           | 56         |
| November           | 84           | 70           | 87           | 71           | 56           | 64         |
| December           | 86           | 84           | 96           | 82           | 74           |            |
| <b>Grand Total</b> | <b>1,078</b> | <b>1,246</b> | <b>1,038</b> | <b>1,023</b> | <b>1,009</b> | <b>851</b> |



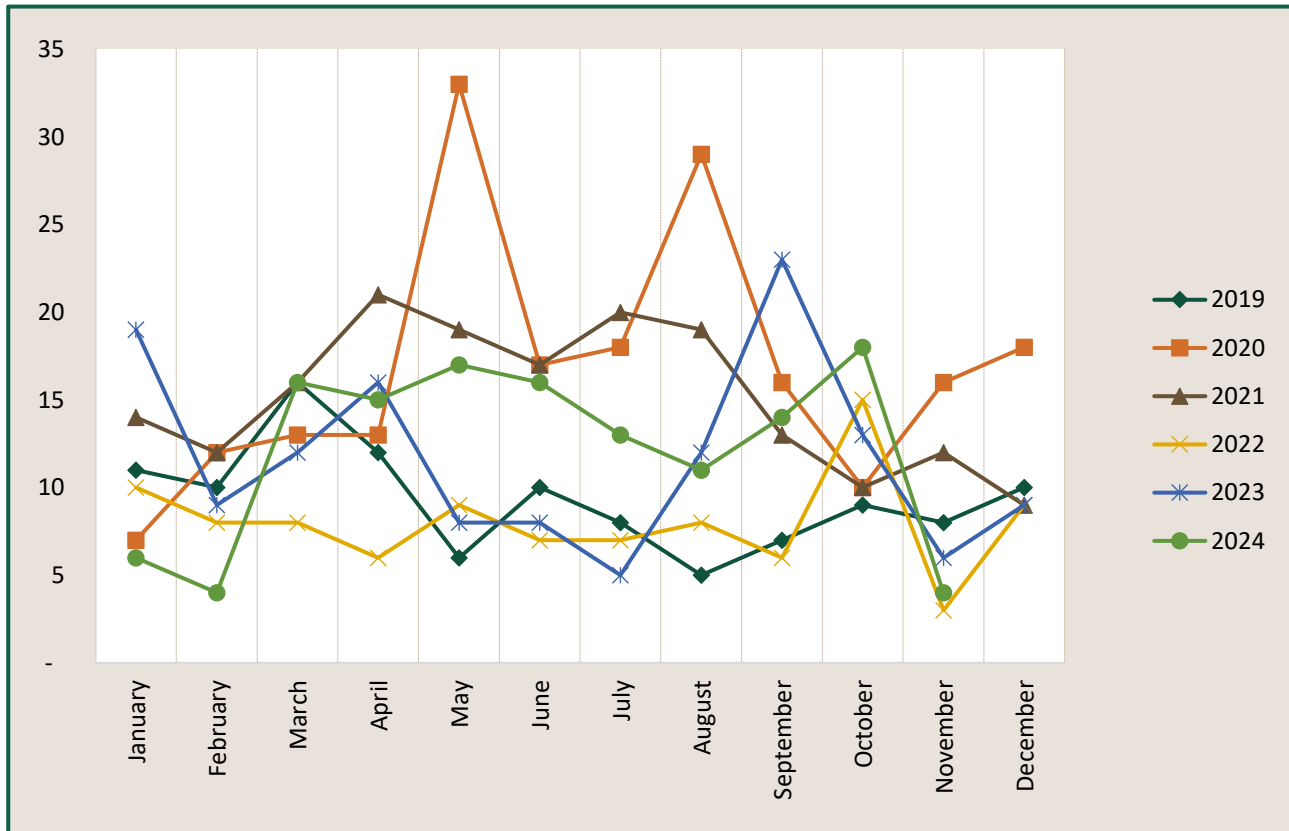
# SPOKANE COUNTY SHERIFF'S OFFICE

Regional Intelligence Group 9

## Crime Check Initiated Call For Service (CFS) - Millwood



Time Period: November 2024



|                    | 2019       | 2020       | 2021       | 2022      | 2023       | 2024       |
|--------------------|------------|------------|------------|-----------|------------|------------|
| January            | 11         | 7          | 14         | 10        | 19         | 6          |
| February           | 10         | 12         | 12         | 8         | 9          | 4          |
| March              | 16         | 13         | 16         | 8         | 12         | 16         |
| April              | 12         | 13         | 21         | 6         | 16         | 15         |
| May                | 6          | 33         | 19         | 9         | 8          | 17         |
| June               | 10         | 17         | 17         | 7         | 8          | 16         |
| July               | 8          | 18         | 20         | 7         | 5          | 13         |
| August             | 5          | 29         | 19         | 8         | 12         | 11         |
| September          | 7          | 16         | 13         | 6         | 23         | 14         |
| October            | 9          | 10         | 10         | 15        | 13         | 18         |
| November           | 8          | 16         | 12         | 3         | 6          | 4          |
| December           | 10         | 18         | 9          | 9         | 9          |            |
| <b>Grand Total</b> | <b>112</b> | <b>202</b> | <b>182</b> | <b>96</b> | <b>140</b> | <b>134</b> |

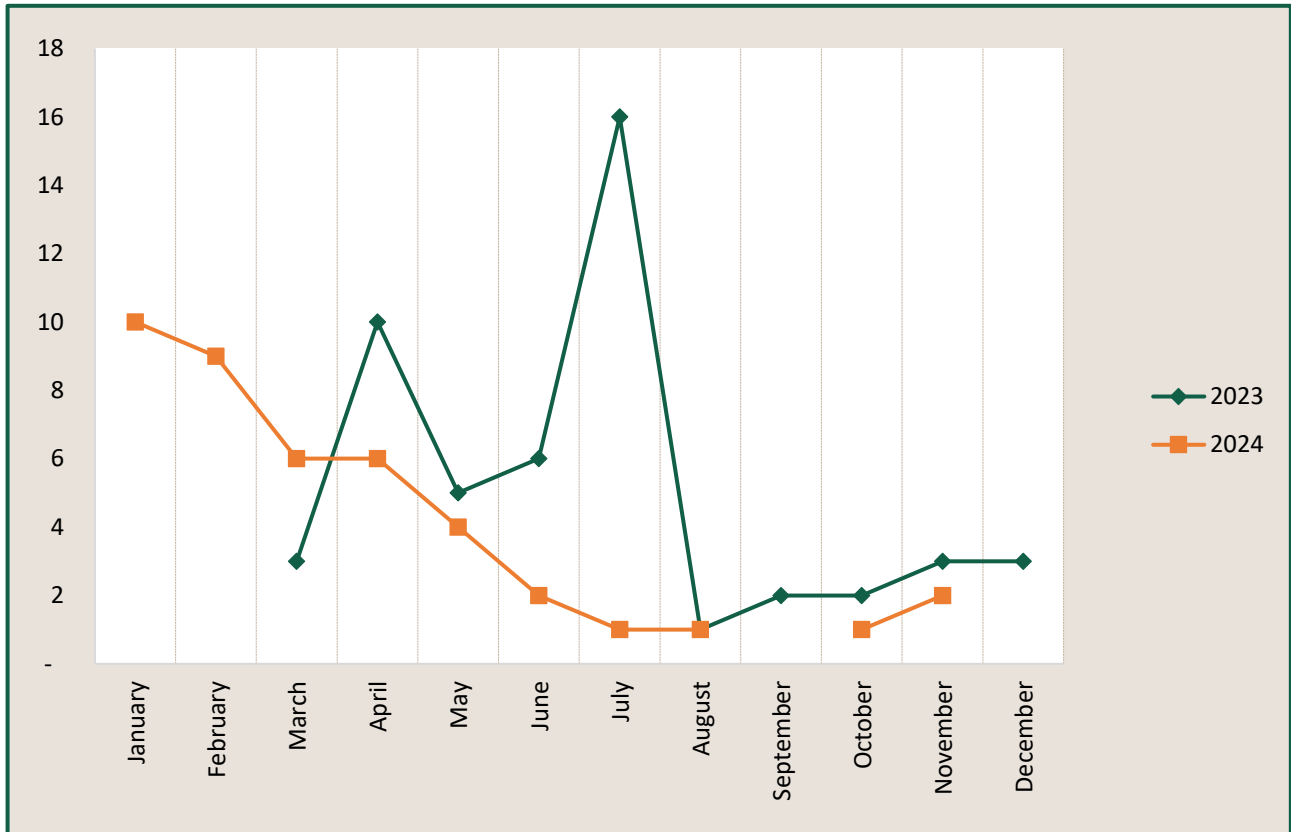
# SPOKANE COUNTY SHERIFF'S OFFICE

Regional Intelligence Group 9

## CAD Call Type COP - Millwood



Time Period: November 2024



|             | 2023 | 2024 |
|-------------|------|------|
| January     |      | 10   |
| February    |      | 9    |
| March       | 3    | 6    |
| April       | 10   | 6    |
| May         | 5    | 4    |
| June        | 6    | 2    |
| July        | 16   | 1    |
| August      | 1    | 1    |
| September   | 2    |      |
| October     | 2    | 1    |
| November    | 3    | 2    |
| December    | 3    |      |
| Grand Total | 51   | 42   |

# SPOKANE COUNTY SHERIFF'S OFFICE

Regional Intelligence Group 9

## Ticket Counts

Date Range: November 2024



| Ticket Type            | Spokane Valley Districts |               | Unincorporated Districts |               | All Districts |               |
|------------------------|--------------------------|---------------|--------------------------|---------------|---------------|---------------|
|                        | Ticket Count             | Charges Count | Ticket Count             | Charges Count | Ticket Count  | Charges Count |
| Criminal Non Traffic   | 92                       | 106           | 76                       | 100           | 168           | 206           |
| Criminal Traffic       | 30                       | 33            | 40                       | 45            | 70            | 78            |
| Infraction Non Traffic | 2                        | 2             | 1                        | 2             | 3             | 4             |
| Infraction Traffic     | 367                      | 399           | 160                      | 213           | 527           | 612           |
| Parking                | 0                        | 0             | 0                        | 0             | 0             | 0             |
| Totals:                | 491                      | 540           | 277                      | 360           | 768           | 900           |

| Ticket Type            | Deer Park    |               | Medical Lake |               | Millwood     |               |
|------------------------|--------------|---------------|--------------|---------------|--------------|---------------|
|                        | Ticket Count | Charges Count | Ticket Count | Charges Count | Ticket Count | Charges Count |
| Criminal Non Traffic   | 2            | 2             | 0            | 0             | 1            | 1             |
| Criminal Traffic       | 0            | 0             | 2            | 2             | 1            | 1             |
| Infraction Non Traffic | 0            | 0             | 0            | 0             | 0            | 0             |
| Infraction Traffic     | 3            | 4             | 4            | 4             | 0            | 0             |
| Parking                | 0            | 0             | 0            | 0             | 0            | 0             |
| Totals:                | 5            | 6             | 6            | 6             | 2            | 2             |

Produced: 12/12/2024

# SPOKANE COUNTY SHERIFF'S OFFICE

Regional Intelligence Group 9

## Ticket Charge Details - Millwood



Date Range: November 2024

| Charge                          | Count |
|---------------------------------|-------|
| 46.61.502.5: DUI                | 1     |
| 9A.36.041.2: ASSAULT 4TH DEGREE | 1     |
| Grand Total                     | 2     |

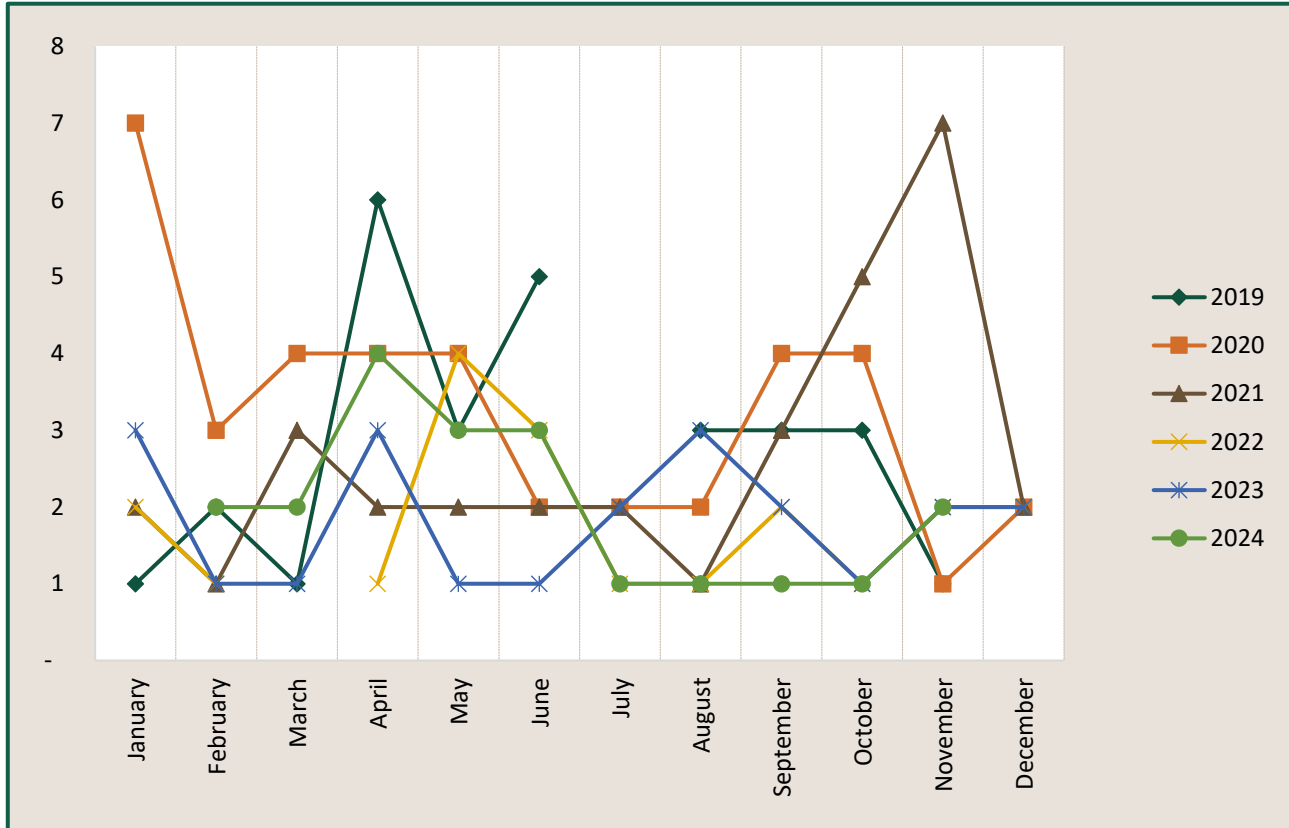
# SPOKANE COUNTY SHERIFF'S OFFICE

Regional Intelligence Group 9

## Criminal Ticket Counts - Millwood



Time Period: November 2024



|                    | 2019      | 2020      | 2021      | 2022      | 2023      | 2024      |
|--------------------|-----------|-----------|-----------|-----------|-----------|-----------|
| January            | 1         | 7         | 2         | 2         | 3         |           |
| February           | 2         | 3         | 1         | 1         | 1         | 2         |
| March              | 1         | 4         | 3         |           | 1         | 2         |
| April              | 6         | 4         | 2         | 1         | 3         | 4         |
| May                | 3         | 4         | 2         | 4         | 1         | 3         |
| June               | 5         | 2         | 2         | 3         | 1         | 3         |
| July               |           | 2         | 2         | 1         | 2         | 1         |
| August             | 3         | 2         | 1         | 1         | 3         | 1         |
| September          | 3         | 4         | 3         | 2         | 2         | 1         |
| October            | 3         | 4         | 5         | 1         | 1         | 1         |
| November           | 1         | 1         | 7         | 2         | 2         | 2         |
| December           |           | 2         | 2         | 2         | 2         |           |
| <b>Grand Total</b> | <b>28</b> | <b>39</b> | <b>32</b> | <b>20</b> | <b>22</b> | <b>20</b> |

\*Ticket Types included Criminal Non Traffic & Criminal Traffic

Produced: 12/12/2024

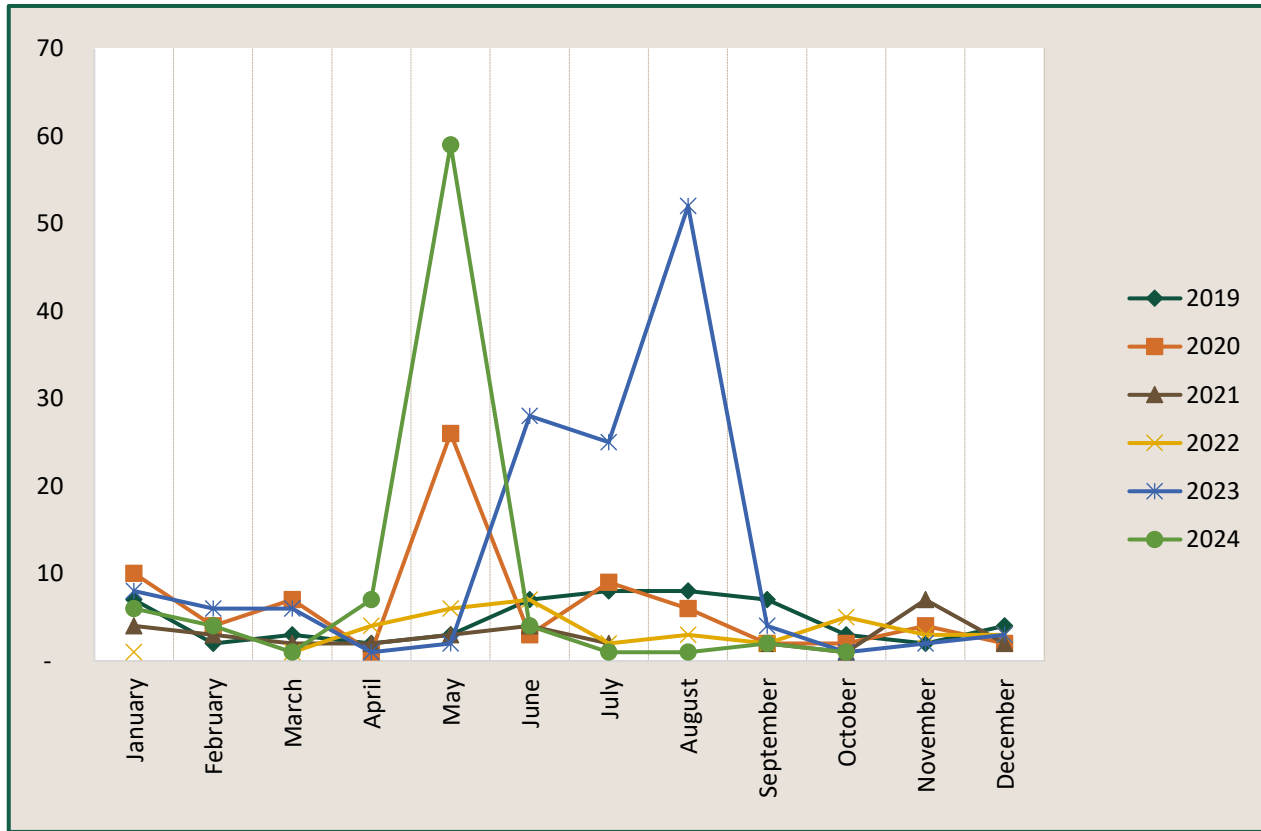
# SPOKANE COUNTY SHERIFF'S OFFICE

Regional Intelligence Group 9

## Non - Criminal Ticket Counts - Millwood



Time Period: November 2024



\* Ticket Types included are Infraction Non Traffic & Infraction Traffic

Produced: 12/12/2024

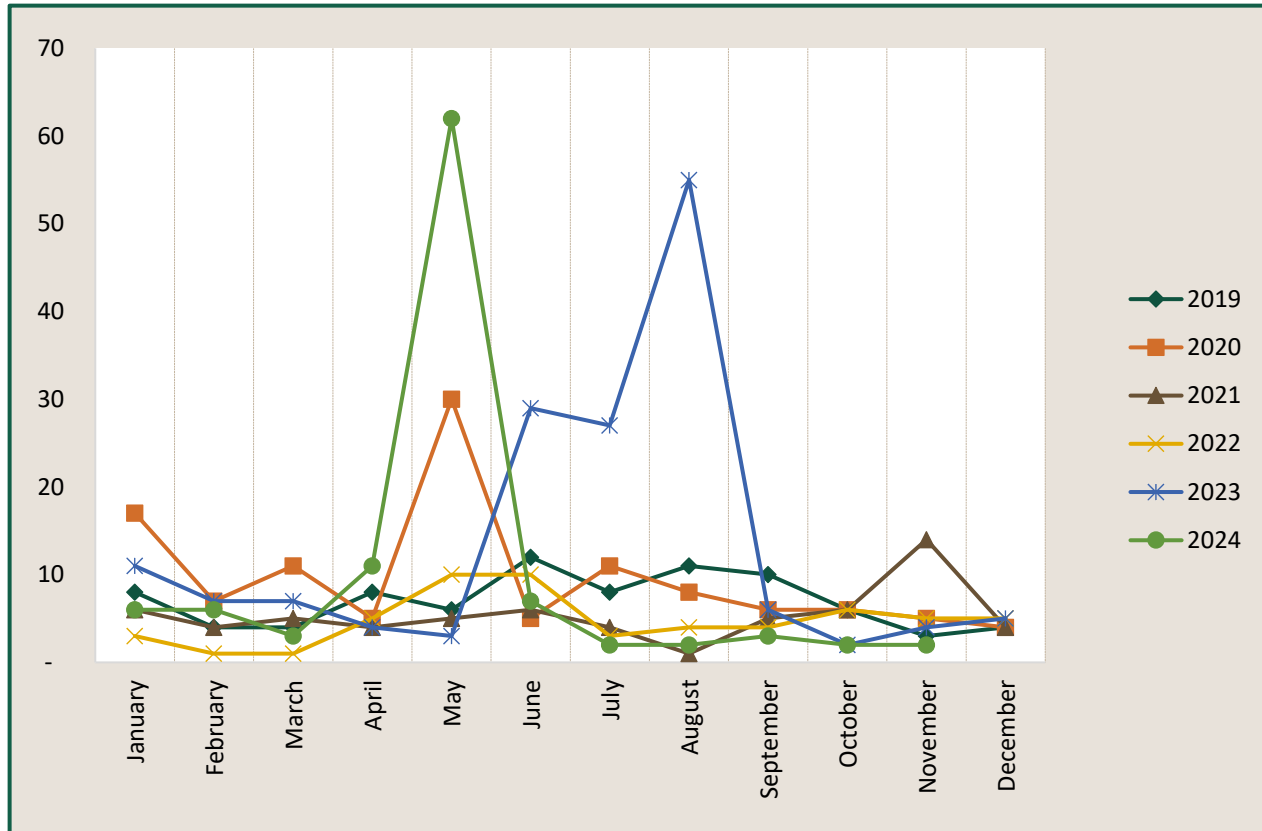
# SPOKANE COUNTY SHERIFF'S OFFICE

Regional Intelligence Group 9

## All Ticket Counts - Millwood



Time Period: November 2024



|                    | 2019      | 2020       | 2021      | 2022      | 2023       | 2024       |
|--------------------|-----------|------------|-----------|-----------|------------|------------|
| January            | 8         | 17         | 6         | 3         | 11         | 6          |
| February           | 4         | 7          | 4         | 1         | 7          | 6          |
| March              | 4         | 11         | 5         | 1         | 7          | 3          |
| April              | 8         | 5          | 4         | 5         | 4          | 11         |
| May                | 6         | 30         | 5         | 10        | 3          | 62         |
| June               | 12        | 5          | 6         | 10        | 29         | 7          |
| July               | 8         | 11         | 4         | 3         | 27         | 2          |
| August             | 11        | 8          | 1         | 4         | 55         | 2          |
| September          | 10        | 6          | 5         | 4         | 6          | 3          |
| October            | 6         | 6          | 6         | 6         | 2          | 2          |
| November           | 3         | 5          | 14        | 5         | 4          | 2          |
| December           | 4         | 4          | 4         | 5         | 5          |            |
| <b>Grand Total</b> | <b>84</b> | <b>115</b> | <b>64</b> | <b>57</b> | <b>160</b> | <b>106</b> |

\* All ticket types except parking

Produced: 12/12/2024