

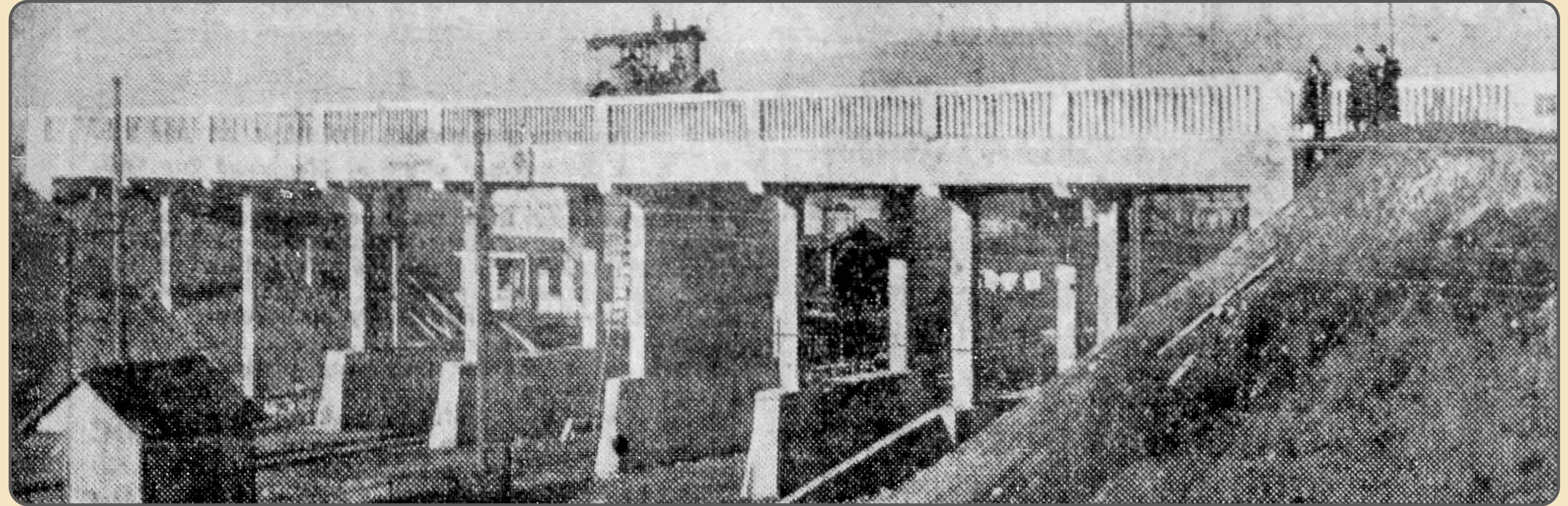
# Subway

Research: Millwood History Enthusiasts

In 1903, The Coeur d'Alene & Spokane Railway Company built its Electric Line to pass under the already established Northern Pacific Railroad (now BNSF). Spokane International Railway added their line to Canada in 1906. At its height, N.P. Subway consisted of an Electric train stop, a store and several houses. Martin and Emma Nelson opened a grocery in 1912 and two of their children were born in Subway.

Then as now, Trent Road paralleled the Northern Pacific tracks but it dipped down to cross two tracks of the electric line and one track of the Spokane International in a draw. A driver could only see a short stretch of the three tracks. Although the crossings had "gongs," the gongs were often out of order. The bridge or viaduct completed in December, 1913 improved safety but it left Subway difficult to access from Trent Road.

The electric train stop provided convenient service to Grandview Acres into the 1940's.



New Viaduct at Northern Pacific Subway on Trent Road shown under strength test of a 16 ton road roller. Spokane Chronicle Dec 9, 1913. (Photographed from NP tracks facing Northwest towards current Millwood Interurban Trail.)

## Grandview Acres

*One hundred and twenty acres of [Narup land] ... will be platted into one and two acre tracts ... It will be known as Grandview. The "Palisades," one of the scenic features of the Spokane Valley, are just across the river. (Spokesman Review April 18, 1908)*

**Grandview Acres** promoted the early 1900's dream of owning land with an easy commute to shopping and job - a healthy place to raise children and food.



View of The Palisades from Grandview Acres in 2020 (photo: Annie Oakes)



J.A. and Matilda Narup, 1914

### Matilda (May) Stegner / Narup

In August, 1889 Joseph and Matilda Stegner came to Spokane on a Northern Pacific train. The Stegners started a General Merchandise Store at Trent in 1890. They acquired the Trent Post Office and Matilda became Post Mistress. Joseph developed appendicitis and died in 1895 leaving Matilda with 5 children, a store and \$2,000 of life Insurance.

Matilda ran the store and bought 160 acres of Spokane Valley land for \$800. After the electric railway was built in 1903, she and her second husband, J. A. Narup sold those 160 acres for \$16,000. They bought more land and became developers. At one time or another, the Narups owned and platted much of the land between the Inland Empire Paper Co. Mill and Pines Road.

photo courtesy Julie Hess