

CITY OF MISSION

# OBLATE PARK PROPOSED RESTROOM CITY OF MISSION

Project Name:

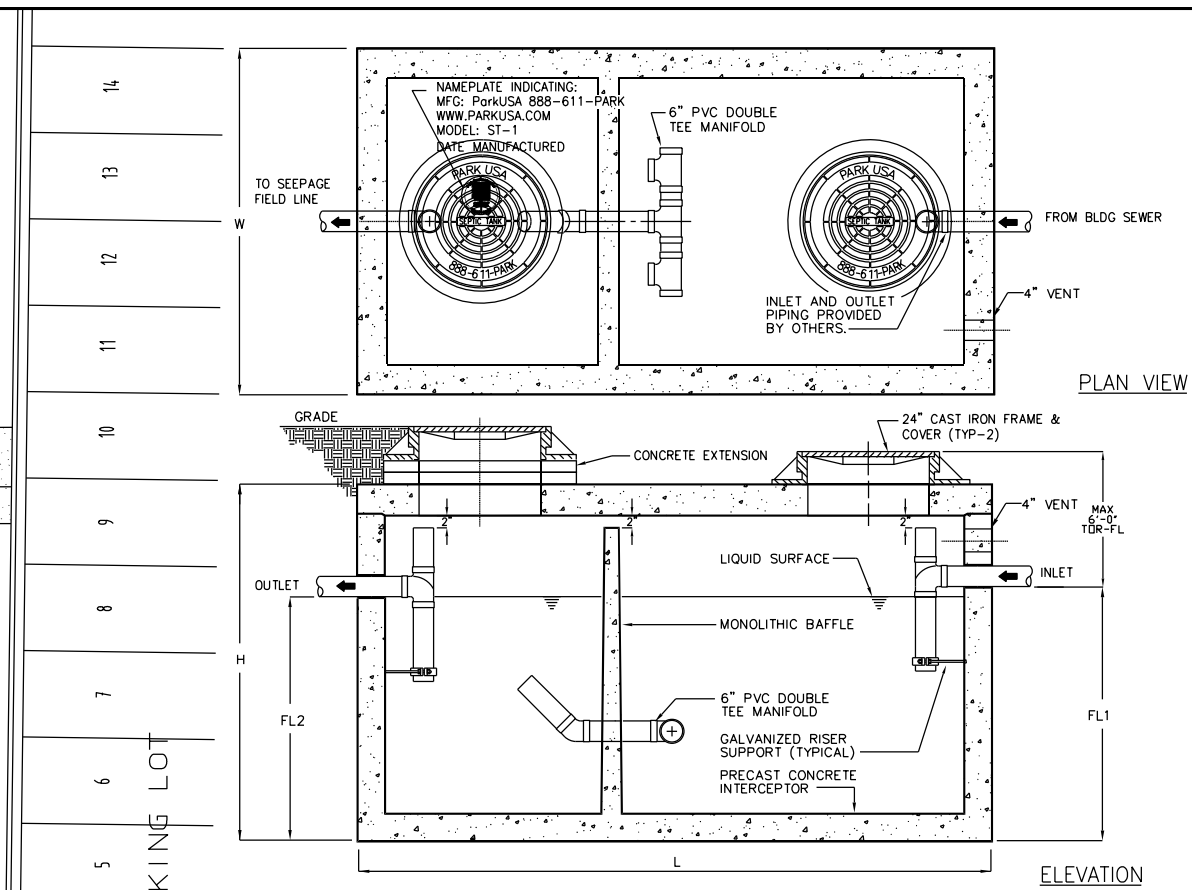
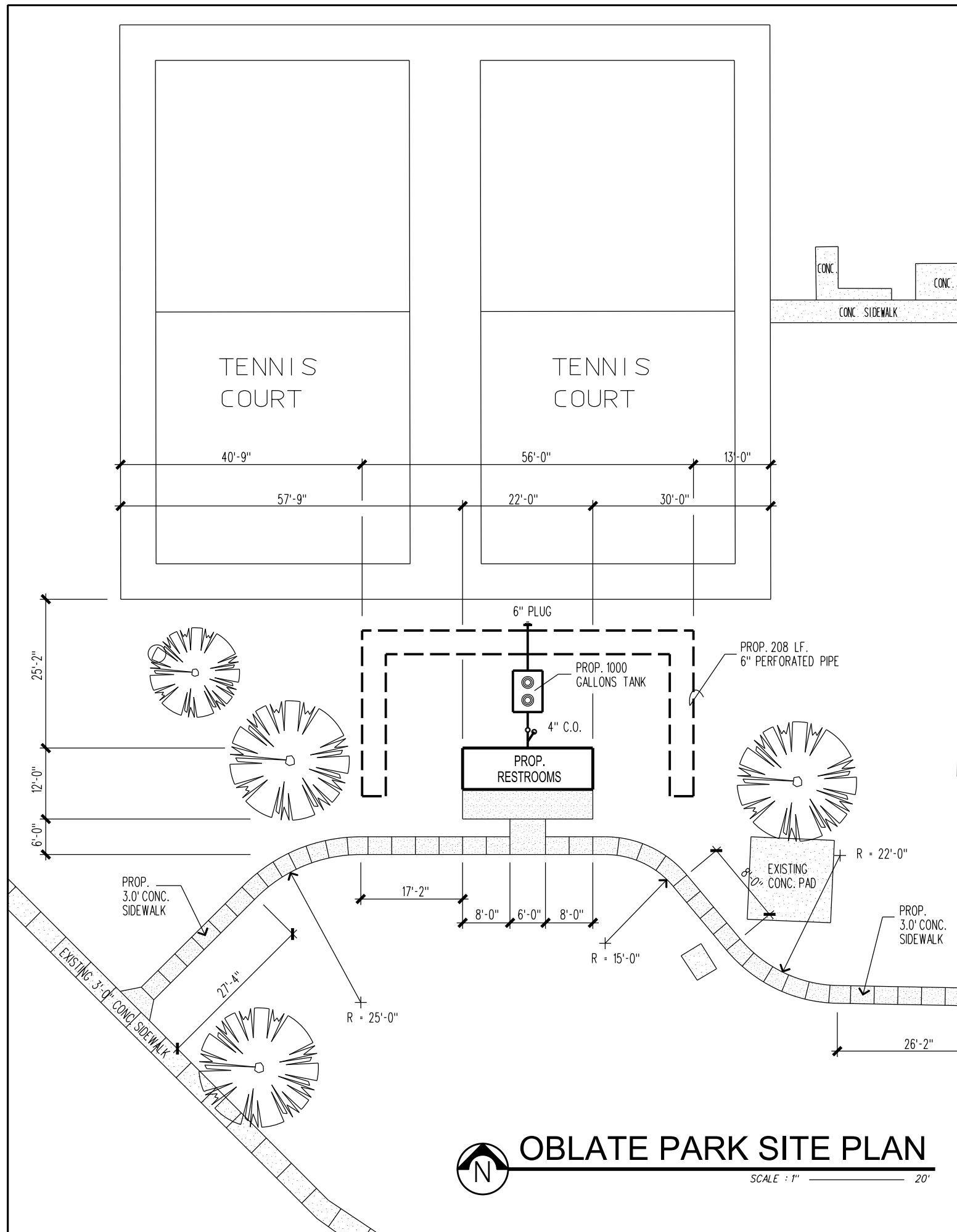
OBLATE PARK  
PROPOSED RESTROOM  
CITY OF MISSION

Date: 07-20-22

Project No: 013-22

Sheet Number:

1 - 1



TYPICAL APPLICATIONS INCLUDE COMMERCIAL AND INDUSTRIAL SEPTIC SYSTEMS WHERE A SEPTIC TANK AND SEEPAGE FIELD IS UTILIZED FOR THE SEWER SYSTEM. THE SEPTIC TANK IS GENERALLY BURIED BELOW GRADE FOR GRAVITY FLOW SEWER SYSTEMS.

**SPECIFICATIONS**

- CONCRETE: CLASS 1/II CONCRETE WITH DESIGN STRENGTH OF 4500 PSI AT 28 DAYS. UNIT IS OF MONOLITHIC CONSTRUCTION AT FLOOR, FIRST STAGE OF WALL AND BAFFLE WITH SECTIONAL RISER TO REQUIRED DEPTH. (MONOLITHIC BAFFLE REQUIRED, SLIDE-IN TYPE IS NOT ACCEPTABLE)
- REINFORCEMENT: GRADE 60 REINFORCED WITH STEEL REBAR CONFORMING TO ASTM A615 ON REQUIRED CENTERS OR EQUAL.
- C.I. CASTINGS: MANHOLE, FRAMES, COVERS OR GRATES ARE MANUFACTURED OF GREY CAST IRON CONFORMING TO ASTM A48-76 CLASS 30. MANHOLE SHALL BE NOMINAL 24 INCH DIAMETER AND BE TRAFFIC DUTY.

MODEL NO.	CAPACITY USGal	EMPTY WT (LBS)	LENGTH L	WIDTH W	HEIGHT H	INLET FL1	OUTLET FL2
ST-500	500	9,500	7'-10"	4'-4"	4'-6"	3'-3"	3'-0"
ST-750	750	9,900	7'-10"	4'-4"	6'-0"	4'-5"	4'-2"
ST-1000	1,000	13,350	8'-8"	5'-0"	6'-0"	4'-9"	4'-6"
ST-1250	1,250	14,650	9'-2"	5'-8"	6'-0"	4'-9"	4'-6"
ST-1500	1,500	16,050	9'-2"	5'-8"	7'-0"	5'-9"	5'-6"
ST-2000	2,000	21,250	9'-0"	6'-0"	8'-0"	6'-9"	6'-6"
ST-2200	2,200	21,250	13'-0"	7'-0"	6'-0"	4'-9"	4'-6"
ST-2500	2,500	27,050	13'-0"	7'-0"	7'-0"	5'-9"	5'-6"
ST-3000	3,000	33,150	13'-0"	7'-0"	8'-0"	6'-9"	6'-6"
ST-3500	3,500	38,550	13'-0"	7'-0"	8'-6"	7'-3"	7'-0"
ST-4000	4,000	38,100	16'-0"	8'-6"	7'-0"	5'-9"	5'-6"

OTHER SIZES ARE AVAILABLE. CONTACT US FOR MORE INFORMATION.  
**ENGINEERING DATA**  
THE SEPTIC TANK IS STRUCTURALLY & HYDRAULICALLY ENGINEERED TO CONFORM TO ASTM C-1227 AND REGIONAL PLUMBING CODES RECOMMENDED IN MOST CITIES. CONSULT WITH LOCAL AUTHORITIES FOR SPECIFIC APPLICATION REQUIREMENTS.

